

Sense of Sight

Write a brief description of each organ/ part of the eye below:

Visual Accessory Organs

Eyelid -

Conjunctiva -

Lacrimal Gland -

Extrinsic Muscles -

Outer Tunic

Cornea -

Sclera -

Optic Nerve -

Middle Tunic

Choroid Coat -

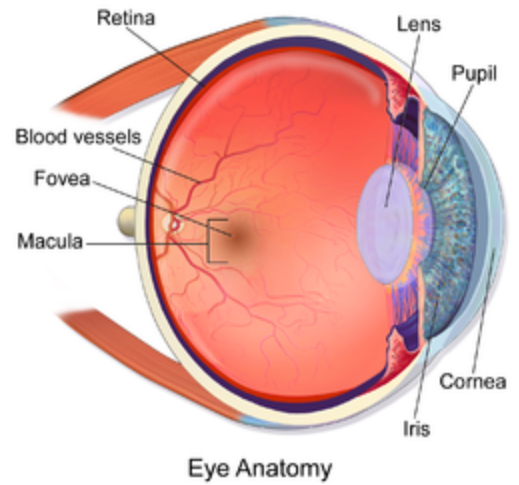
Ciliary Body -

Lens -

Iris -

Aqueous Humor -

Pupil -



Inner Tunic

Retina -

Fovea Centralis -

Optic Disk -

Vitreous Humor -

Light Refraction -

Accommodation -

Visual Receptors:

Rods and Cones -

Retinal neurons →

→

→

→

→

EYE PROBLEMS:

Light Refraction - the bending of light around an object

Images viewed by the eye are upside-down, our brains interpret it properly

Accommodation - the lens changes shape to focus on objects (ciliary muscles, suspensory ligaments)

Visual Receptors

Rods and Cones - located within the retina, rods for light/dark; cones for color

Retinal neurons --> form optic nerves --> optic chiasma --> thalamus --> visual cortex of the occipital lobe

EYE PROBLEMS: Glaucoma, cataracts, nearsightedness, farsightedness, eye floaters