



**NYU**

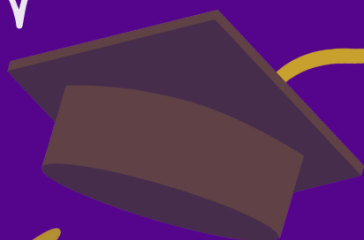
Wasserman Center  
for Career Development



# Graduate Career Outcomes Survey

---

Class of 2023





# Graduate Career Outcomes Report

## Table of Contents

2	<u><a href="#">Introduction</a></u> Methodology
3	<u><a href="#">Overview</a></u> Demographics
3	<u><a href="#">Career Outcomes</a></u>
3-4	<u><a href="#">Employment</a></u> Position Type and Industry
5	<u><a href="#">Employment</a></u> Employment Location
5	<u><a href="#">Continuing Education</a></u>
5	<u><a href="#">Career Development</a></u>
5	<u><a href="#">Conclusion</a></u>



## Introduction

The New York University Wasserman Center for Career Development conducted its 2023 Graduate Career Outcomes Survey, which captures the career outcomes of NYU students who graduated with a Master's degree, Doctoral degree, or an Advanced Certificate, from the schools listed below, between July 1, 2022 and June 30, 2023. This timetable is consistent with the [National Association of Colleges and Employers' recommendations](#). The goal of this survey is to gain insights into post-graduation employment and ongoing education activities.

Career outcomes for graduate students are impacted by many of the factors tied to the university setting, including academic program selection, on-campus involvement/networking, and participation in career development activities. These outcomes may also be impacted by factors not tied to the university setting, including prior work experience, a broader network of professional colleagues, and current employment upon the start of a degree program. This report summarizes the findings from the Class of 2023.

## Overview

### Methodology

The survey questions were based primarily on the NACE standards, with minor adjustments to include school-specific post-graduate survey questions. Graduates were first sent a link to an online survey on Handshake via email. In addition, the Wasserman Center for Career Development implemented two phone banks to reach out to recent graduates in early Summer 2022 and Fall 2022, as well as two text messaging campaigns. NACE-approved professional networking sites such as LinkedIn were also used to obtain post-graduation status data for those who did not respond to either the emails or phone inquiries. Additionally, the Wasserman Center included data from Handshake, the National Student Clearinghouse, the Office of Global Services, and outcomes information reported by faculty, staff, and employers.

The target population consisted solely of individuals who, based on the official records from the university student information system, received an advanced degree (Master's or Doctoral degree) or an Advanced Certificate in either September 2022, January 2023, or May 2023 from the following schools:

Gallatin School of Individualized Study  
Graduate School of Arts and Science  
Rory Meyers College of Nursing  
School of Global Public Health  
School of Professional Studies  
Silver School of Social Work  
Steinhardt School of Culture, Education, and Human Development  
Tandon School of Engineering (including Center for Urban Science and Progress)

Information on **6753** graduates who obtained an advanced degree and/or an Advanced Certificate was collected and analyzed. The list of graduates contained records for **9702** degrees conferred. Thus, Wasserman was able to collect post-graduate outcomes information on **69.6%** of the Class of 2023.

Throughout the analyses, "missing values" (i.e., questions that the respondents did not answer) were omitted, as were "Unsure" or "Unknown" responses for most calculations. As illustrated in several charts, the total percentage does not equal 100% due to rounding. Additionally, Institutional Research Board (IRB) guidelines prohibit us from requiring survey participants to answer all questions, so the number of responses to each question varies.



## Demographics

The students included in this report (survey sample) provide a proportionate representation of the makeup of NYU's Class of 2023 as illustrated below.

Population Breakdown   BY DEGREE/CERTIFICATE		
	Survey Sample*	Overall Population
Master's Degree	93.1%	93.9%
Doctoral Degree	6.1%	5.5%
Advanced Certificate	0.8%	0.6%

\*This is the population of graduate alumni, for whom we have information, broken down by degree type.

## Career Outcomes

### Career Outcomes Rate

The career outcomes rate for the Class of 2023 is **96.7%**. The career outcomes rate is the total number of graduates who secured a position or enrollment in a continuing education program divided by the total number of graduates who sought opportunities. Of those who secured an opportunity, **92.8%** reported employment, **6.3%** reported continuing education, and **0.9%** reported both employment and continuing education as their career outcome. Of those reporting employment or employment and continuing education as their career outcome, **84.5%** secured their jobs by or within 3 months of graduation.

Career Outcomes Rate   BY DEGREE/CERTIFICATE	
Degree Type	Percentage
Master's Degree	96.5%
Doctoral Degree	99.3%
Advanced Certificate	96.1%

## Employment

### Position Type And Industry

**90.5%** of graduates reported an outcome of working or working and continuing education. Of the number of graduates reporting this outcome, **46.9%** were domestic and **53.1%** were international graduates\*. Employment was categorized into one of ten position types and one of seventy-one industries.

\*There is a small number of graduates where citizenship is unknown.

Position Type   ALL RESPONDENTS	
Position Type	Percentage
Organization	89.3%
Internship	1.9%
Fellowship	1.8%
Temporary/Contract Work Assignment	1.7%
Faculty Non Tenure	1.6%
Entrepreneurship/Self-Employed	1.4%
Freelancer	1.4%
Faculty Tenure Track	0.6%

Top Industries   ALL RESPONDENTS	
Industries	Percentage
Education/Teaching	17.9%
Healthcare	17.2%
Computer Science/Technology	14.0%
Financial Services/Banking	8.1%
Non-Profit/Social Services	7.1%
Consulting	3.7%
Government/Military	3.1%
Engineering	3.0%
Entertainment/Media	2.9%
Real Estate	2.4%
Communications (Journalism, Publishing)	2.3%



The top two industries reported for **Master's degree** recipients account for over 30% of the total, but are distributed across a variety of sectors. Position type is heavily concentrated in the Organization category (**91.2%**).

Position Type   MASTER'S DEGREE	
Position Type	Percentage
Organization	91.2%
Internship	2.1%
Temporary/Contract Work Assignment	1.8%
Freelancer	1.5%
Entrepreneurial	1.3%
Faculty Non Tenure Track	0.9%
Fellowship	0.7%
Faculty Tenure Track	0.2%

Top Industries   MASTER'S DEGREE	
Industries	Percentage
Healthcare	16.9%
Education/Teaching	15.7%
Computer Science/Technology	14.4%
Financial Services/Banking	8.6%
Non-Profit/Social Services	7.5%
Consulting	3.8%
Engineering	3.2%
Government/Military	3.2%
Entertainment/Media	3.1%
Real Estate	2.6%
Communications (Journalism, Publishing)	2.5%

**Doctoral** graduates' position types and industries are heavily concentrated; the top two position types account for **almost 80% (79%)** of placements. Education/Teaching and Healthcare represent more than half (**63.7%**) of all placements.

Position Type   DOCTORAL DEGREE	
Position Type	Percentage
Organization	61.2%
Fellowship	17.8%
Faculty Non-Tenure Track	11.5%
Faculty Tenure Track	6.3%
Entrepreneurial/Self-Employed	2.1%
Temporary/Contract Work Assignment	0.5%
Freelancer	0.5%

Top Industries   DOCTORAL DEGREE	
Industries	Percentage
Education/Teaching	45.5%
Healthcare	18.2%
Computer Science/Technology	9.9%
Science/Research	5.6%
Pharmaceuticals/Biotech	3.2%
Financial Services/Banking	3.2%
Non-Profit/Social Services	2.9%
Consulting	2.7%
Government/Military	1.9%

The reported industries for graduates who earned **Advanced Certificates** are reflective of their area of study.

Position Type   ADVANCED CERTIFICATE	
Position Type	Percentage
Organization	81.4%
Entrepreneur/Self-Employed	9.3%
Faculty Non Tenure	4.6%
Temporary/Contract Work Assignment	2.3%
Fellowship	2.3%

Top Industries   ADVANCED CERTIFICATE	
Industries	Percentage
Healthcare	47.6%
Education/Teaching	26.2%
Arts (Theater, Performing Arts)	16.7%
Non-Profit/Social Services	2.4%
Consulting	2.4%
Government/Military	2.4%
Entertainment/Media	2.4%



## Employment Location

**93.4%** of domestic and **93.9%** of international graduates reported an outcome of being employed. Of those who reported both employment and an employment location, **98.6%** of domestic and **93.2%** of international graduates remain in the United States.

Top Domestic Location   ALL RESPONDENTS	
State	Percentage
New York	63.4%
California	9.3%
New Jersey	7.0%
Washington	2.7%
Massachusetts	2.5%

Top International Location   ALL RESPONDENTS	
Country	Percentage
China	39.7%
Canada	8.6%
United Kingdom	6.2%
India	4.7%
Singapore	3.9%

## Continuing Education

**7.2%** of graduates reported an outcome of continuing education. Of the number of graduates reporting this outcome, **52.7%** were domestic and **47.3%** were international graduates. The continuing education breakdown by degree and certificate level is included in the table below. This is the proportion of those who are Continuing Education and/or Working and Continuing Education as a proportion of all outcome types.

Continuing Education   BY DEGREE/CERTIFICATE	
Degree Type	Percentage
Advanced Certificate	10.2%
Doctoral Degree	7.5%
Master's Degree	7.2%

## Career Development

Overall, **72.5% of graduates used Wasserman Center** resources to support their career development during enrollment. Services include individual career coaching appointments, career development workshops, events, and access to the many Wasserman Center career resources available to students.

## Conclusion

Graduates from NYU are among the most accomplished in the country. Both globally and within the United States, our alumni make a significant impact in a wide range of sectors and communities. Our data indicates that the Class of 2023 will continue this tradition, with an outcomes rate of **96.7%**.

The NYU Wasserman Center for Career Development partners with academic departments, employers, and the entire University community to support students and alumni through strategically planned initiatives, career education programming, and development of and connections to resources. It is our mission to empower our students and alumni to succeed at every stage of their career by creating opportunities for them to develop the skills, experiences, and connections they need to thrive in a dynamic global economy.