

Brandywine Creek State Park

***The Fr. Beattie
Salesianum
Cross Country
Invitational***

The tradition continues.

Join us and see if you can

"Conquer the Creek."

Saturday, October 5, 2024

The Fr. Beattie Salesianum Cross Country Invitational

Saturday, October 5, 2024

REGISTRATION

We will use Milesplit for registration. **Registration Deadline: Monday, September 23rd at 7:00 PM.** Invoice with fees is located on the last page of this information packet.

Register for each race your runners will participate in:

VARSITY RACES Choose only 1 varsity race to participate in and all other runners are placed in the JV races.

- Varsity Boys A (7 runners)
- Varsity Boys B (7 runners)
- Varsity Girls A (7 runners)
- Varsity Girls B (7 runners)

JV RACES

- JV Boys A (10 runners)
- JV Boys B (unlimited)
- JV Girls (unlimited)

Email Meet Director Joe Gioffre, jgioffre@salesianum.org with questions about the race breakdown or course.

DIVISIONS

We have 2 Divisions that you can enter for varsity. Teams **MUST** enter their top 7 runners in a varsity race before entering a JV race. Varsity A (most competitive), Varsity B (typically smaller and less competitive teams). Please enter the race that best correlates with your typical ability in relation to other teams. Your entries will be evaluated by our committee and past records for final placement may be used to keep divisions balanced. Please check past results to see if your team wants to run in the A race. If you have questions about which Division to enter, please email Meet Director Joe Gioffre, jgioffre@salesianum.org.

AWARDS

The top three teams in each varsity race will be awarded a plaque and t-shirts. The winner of each JV race will be awarded a plaque and the top three JV teams will receive t-shirts. Top twenty runners in each varsity race will receive a medal. Top fifteen runners in JV races will receive a medal.

ENTRY FEES & PAYMENT

\$150/gender team for varsity race. \$100/gender team for JV race. \$10 for an individual runner (max up to four runners). Gender max is \$250 and school max is \$500.

Checks made payable to: SALESIANUM SCHOOL

Mail entry form and payment to:
Katie Godfrey, Athletic Director
Salesianum School
1801 N. Broom St.
Wilmington, DE 19802

THE COURSE - map located on next page

The cross country course at Brandywine Creek State Park was redesigned in 2010, providing a safer running surface while maintaining all of its challenges. The starting area permits a full invitational field to line up, and crosses a large open grass area. After the first two panhandles the course heads directly left, not down the hill as in previous years (this section was becoming unsafe). It moves towards the bottom of Maintenance Hill and circles around to go back up. The course then follows the same trail as before until it gets near the finish area, when the runners will circle the meadow area above the finish line. All turns are clearly marked with posts. The mile and two mile points are marked. The course crosses paved roads at only two brief points. Spectators will have an excellent view of the starting line and the finish area. A course map is provided at our meet website.

SPECTATOR/EVENT ENTRANCE FEE

There is a State Park entrance fee for all *vehicles* on the day of the event. Daily park entrance fees for vehicles registered in Delaware are \$4. Fees for out-of-state vehicles are \$8. Buses are not charged an entrance fee into the event.

RACE SCHEDULE

- 1:00 pm – JV Boys B
- 1:40 pm – JV Girls
- 2:20 am – JV Boys A
- 3:00 pm – Varsity Girls B
- 3:40 pm – Varsity Boys B
- 4:20 pm – Varsity Girls Championship
- 5:00 pm – Varsity Boys Championship
- 5:45 pm – Awards

The course will be open until 12:30 pm for touring on the day of the race and is accessible for review before race day. Over 40 school teams enter with a few hundred runners competing. If there are any teams in your area who would be interested in entering please ask them to contact Athletic Director, Katie Godfrey at (302)356-2611 or kgodfrey@salesianum.org.

DIRECTIONS

Brandywine Creek State Park
41 Adams Dam Road
Wilmington, DE 19807

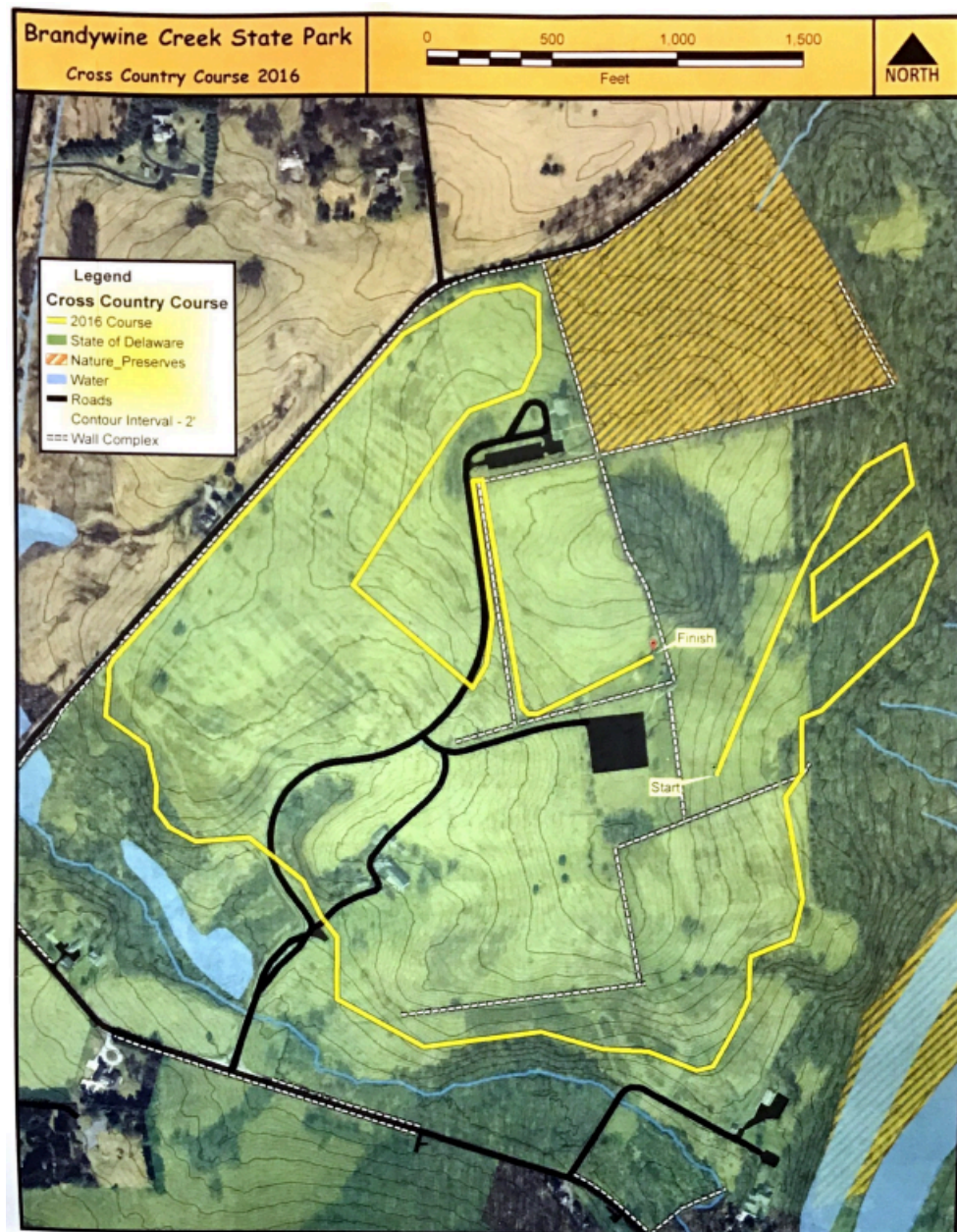
Only 45 Minutes from Philadelphia, 90 minutes from Atlantic City, NJ, 2 hours from Washington, DC, and 3.5 hours from Richmond, VA.

HOTEL

The picturesque Brandywine Creek State Park is located in the serene Brandywine Valley, home of miles of open space, vineyards and tax free shopping. The park is located only 2 miles from Route 202 which boasts dozens of restaurants and hotels.

The Official Hotel of the "Fr. Beattie" Salesianum Invitational is the DoubleTree on Concord Pike/Rt. 202. Please call for team rates at (302)351-5501.

DoubleTree by Hilton Hotel Wilmington
4727 Concord Pike
Wilmington, DE, 19803





SALESIANUM SCHOOL

Fr. Beattie Salesianum Cross Country Invitational Invoice

Meet Information: October 5, 2024 at Brandywine Creek State Park

Make checks payable to: ***Salesianum School***

Please write "XC Invite" in the memo space on the check.

Remittance address:

Salesianum School
Attn: Katie Godfrey
1801 N. Broom Street
Wilmington, DE 19802

School Name: _____

Coach's Name: _____

Coach's email: _____

Athletic Director's Name: _____

Athletic Director's email: _____

Check all that apply:

_____ \$10 for an individual runner (max up to four runners), total = _____

_____ \$150 Varsity Girls team

_____ \$150 Varsity Boys team

_____ \$100 Junior Varsity Girls team

_____ \$100 Junior Varsity Boys team

Total _____

Gender max: \$250.00

School max: of \$500.00