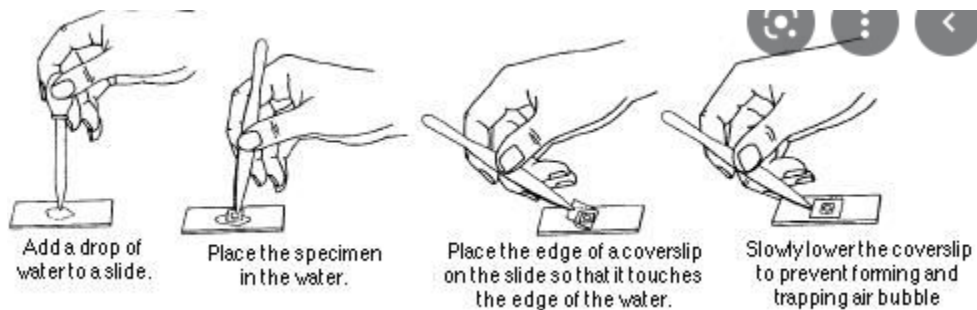


## Lesson 2 - Cells and Cell Parts

Purpose - Use a microscope to compare and contrast common cell parts for plant and animal cells.

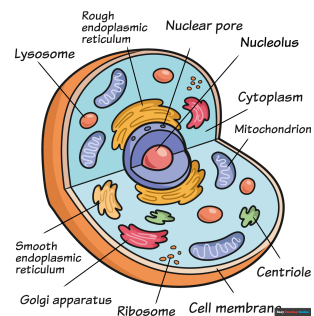
Warm up - Write - What are some common similarities and differences between plants and animals?

1. With a partner - [Make 2 slide samples and draw each](#) (post student guide to Google Classroom). Label parts according to the "standard" images. Use this as a print out.

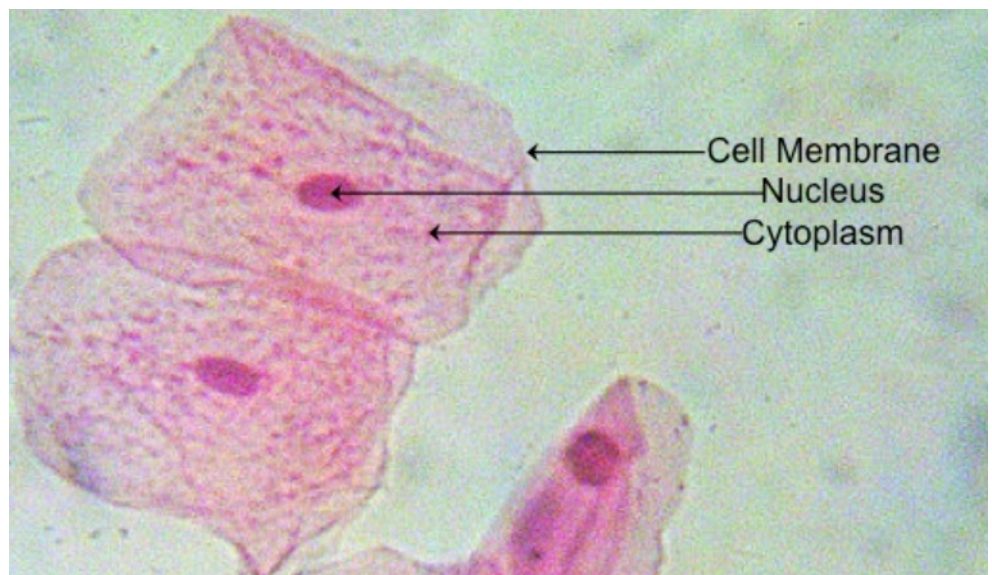


2. Display - Show 2 labeled images at the end of class to check understanding. [Cheek](#) and [Onion](#) (scroll down)

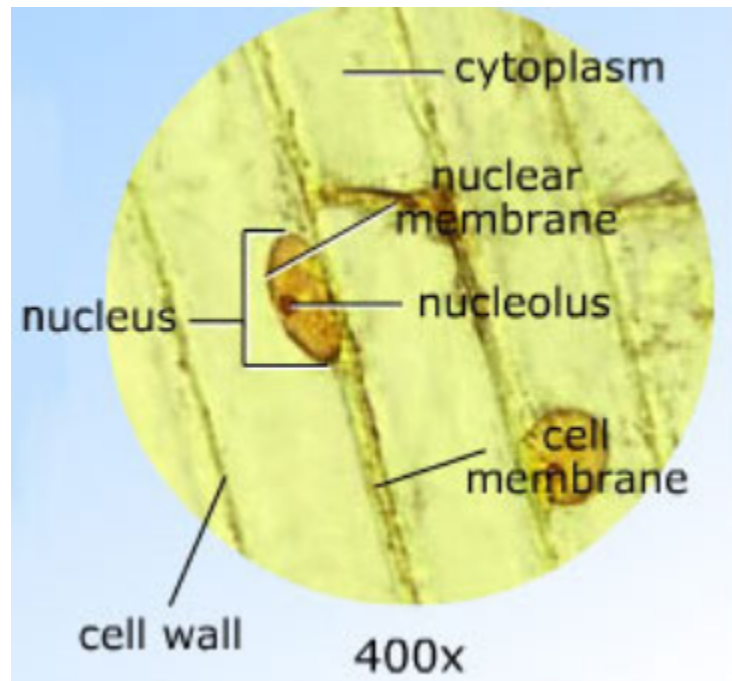
- While waiting for the microscope - [Draw and label the parts of a cell](#) (how to)



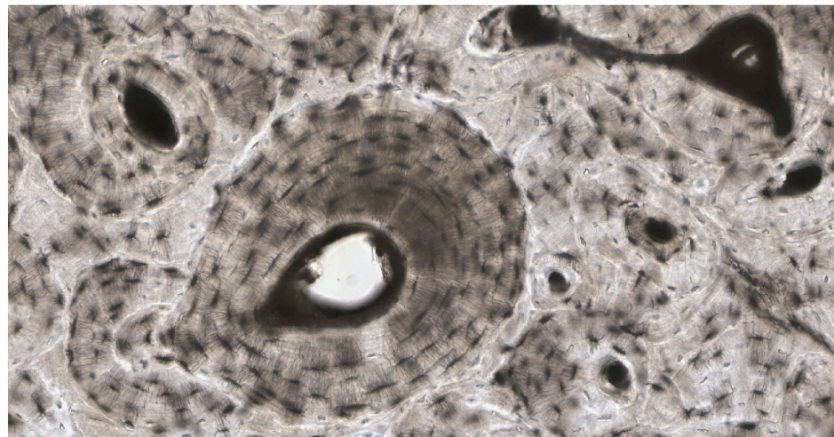
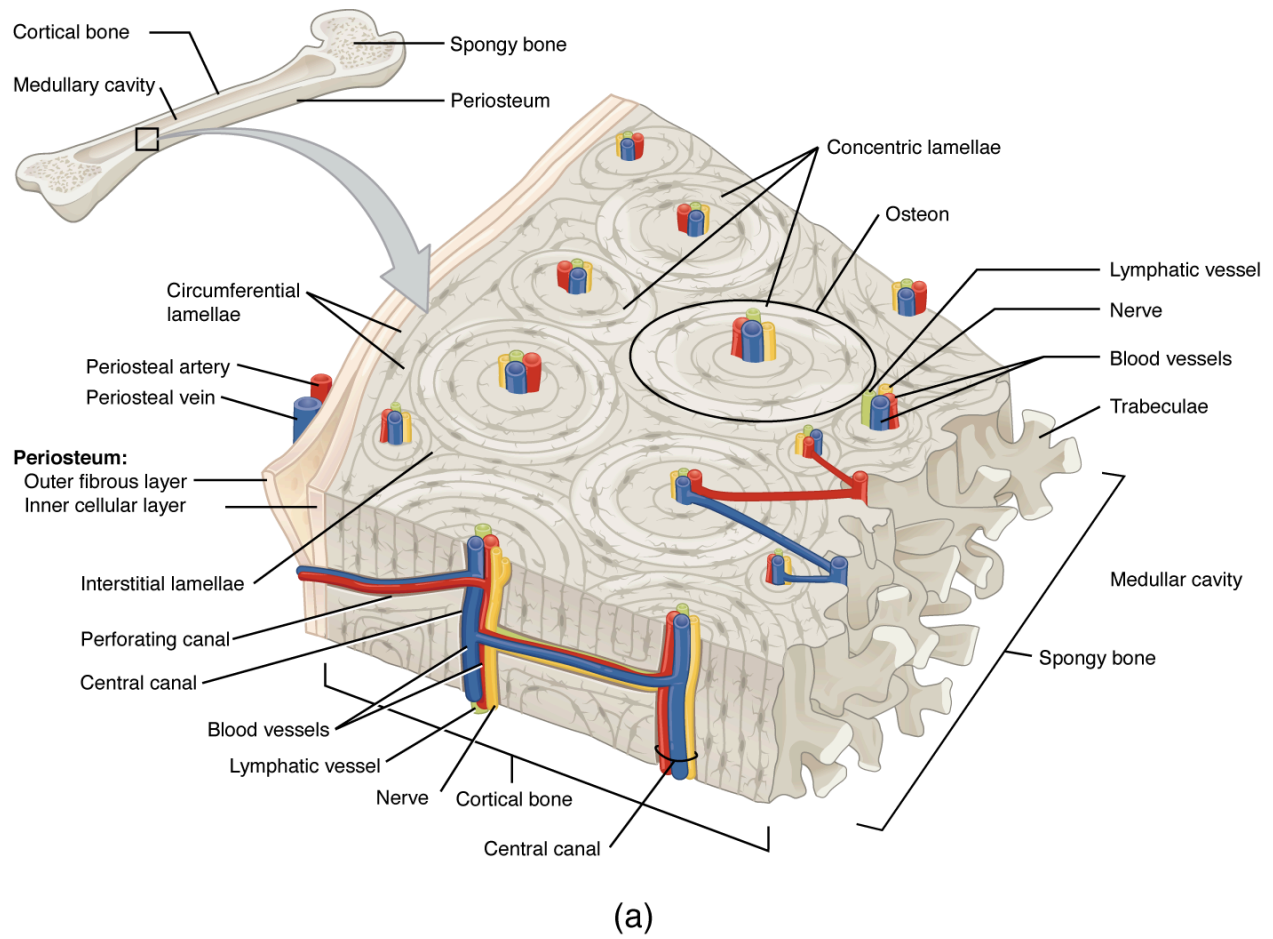
Skin Cells (animal)



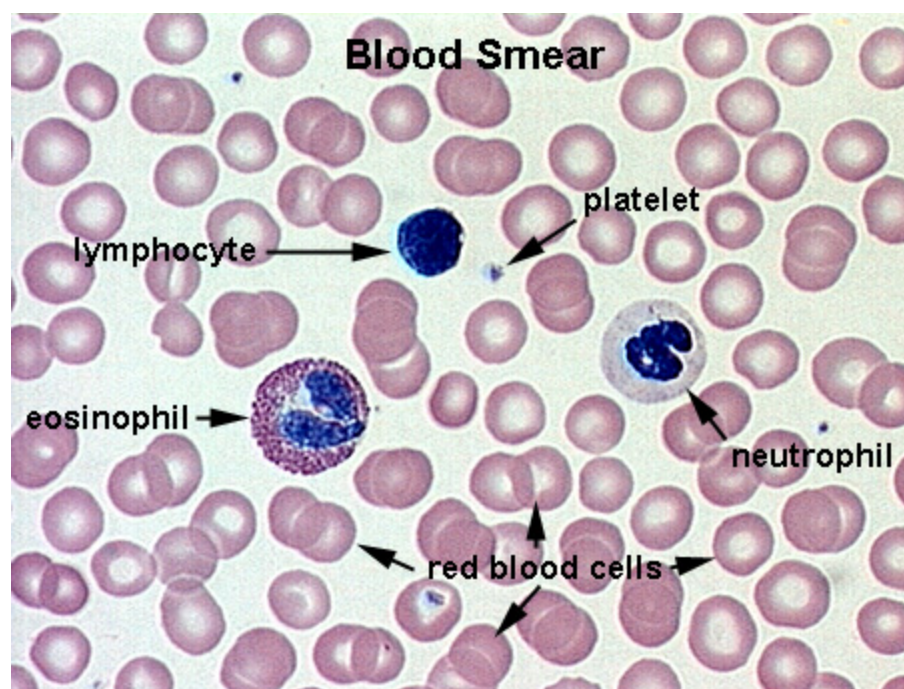
Onion Cell (plant)



Bones and Tissue (animal) [Source](#)



Blood Cells (animal)







Add a drop of water to a slide.



Place the specimen in the water.



Place the edge of a coverslip on the slide so that it touches the edge of the water.



Slowly lower the coverslip to prevent forming and trapping air bubble



Add a drop of water to a slide.



Place the specimen in the water.



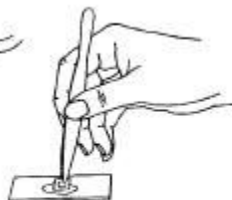
Place the edge of a coverslip on the slide so that it touches the edge of the water.



Slowly lower the coverslip to prevent forming and trapping air bubble



Add a drop of water to a slide.



Place the specimen in the water.



Place the edge of a coverslip on the slide so that it touches the edge of the water.



Slowly lower the coverslip to prevent forming and trapping air bubble



Add a drop of water to a slide.



Place the specimen in the water.



Place the edge of a coverslip on the slide so that it touches the edge of the water.



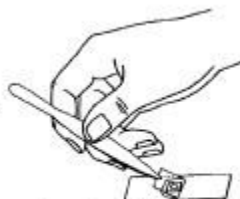
Slowly lower the coverslip to prevent forming and trapping air bubble



Add a drop of water to a slide.



Place the specimen in the water.



Place the edge of a coverslip on the slide so that it touches the edge of the water.



Slowly lower the coverslip to prevent forming and trapping air bubble

