



District 1 Family Handbook

2025 - 2026

Superintendent: Dr. Carry Chan-Howard

District 1

Key Contacts



Superintendent Carry Chan

Phone: 212-353-2948

cchan2@schools.nyc.gov



[Christina Sahibzada](#)

Family Leadership Coordinator

Phone: 929-722-1076

CSahibzada@Schools.nyc.gov

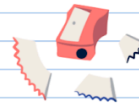


[Angelica Torres](#)

Family Support Coordinator

Phone: 929-585-3839

ATorres121@schools.nyc.gov





Key Resources

District 1 Overview - District 1 is a district of choice, located on the Lower East Side of Manhattan. Our district includes 19 schools that each offer unique learning experiences for students and families. To learn more about our schools and our leaders, explore the links below.

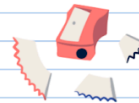
- [Our Schools](#)
- [Our Team](#)
- [Parents Bill of Rights](#)
- [District Parent and Family Engagement Policy](#)

Attendance - It is important that students in 3K through 12 attend school daily. It is our district's goal to ensure all students attend school at least 90% of the time. Students who are absent 18 days or more are considered chronically absent and will have missed nearly a month of instruction. Daily attendance improves students' academic performance and their social-emotional well-being. If you need help in getting your child to school each day, our school and district teams can help.

Make a plan to attend school daily. Please use the [2025-2026 School Year Calendar](#) to support your attendance plan.

Community Resources - Our District 1 Schools have strong partnerships with Community-Based Organizations. Together, our schools and CBOs ensure our students and families are supported on their academic and personal growth path. Our community partners include:

- [Ed Alliance](#)
- [Grand Street Settlement](#)
- [Henry Street Settlement](#)
- [Lower East Side Girls Club](#)
- [University Settlement](#)
- [Dorill Initiative](#)
- [Manny Cantor Center](#)
- [Trinity Church Wall Street](#)





Enrollment - Middle School and High School Enrollment periods begin in the fall. Early Childhood Enrollment launches in early winter. You can check this [page](#) for enrollment dates and questions. Our team is always available to help you find the right school for your family.

My Schools Account - NYC families can use MySchools to apply to public schools from 3-K to high school. Get started by creating an account. Then explore your children's personalized school options and get guidance on the admissions process from start to finish.

Family Resources - In addition to in-person support, there are many web-based applications that can help you keep track of your child's learning and support the home-school connection.

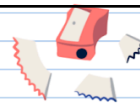
New York City Schools Account (NYCSA) - NYSCA can help you access your child's grades, attendance, and other important information in one place. Creating a NYSCA will make sure that you have access to school and district messaging.

Parent University - Classes for families to seek to educate and empower families as partners, advocates, and lifelong educators in their student's education through free courses, resources, events, and activities. Parent University serves all families, from early childhood through adulthood.

NYC Kids Rise Save for College- provides families, schools, and communities with a way to work together to invest in and save for their children's futures. It is a scholarship and savings program designed to make college and career training more accessible and achievable for public school students.

SORA app- Sora provides students unified access to curriculum titles, leisure reading, and the public library.

New York Public Library- Build summer reading, join community workshops, and utilize the [Culture Pass](#)!





Adobe- All NYCPS students & staff have premium Adobe access (including Express and Creative Cloud) through **TeachHub**. You can access the student login guide [here](#).

Literacy - In alignment with the Chancellor's Priorities and [NYC Reads](#), the district goal is to ensure that all of our students become strong readers, which is the single most important skill required for educational, career, and lifetime success. Based on extensive research, NYC Reads will ensure that pre-K and elementary school students receive the most effective reading instruction materials and methods. NYCPS has many online resources available to support reading at home.

[NYC Reads Parent Guide](#)

[Literacy Resources for Families](#)

[Supporting Independent Reading at Home](#)

To ensure students are regularly engaged in rigorous and relevant learning experiences at each grade level we utilize the following curriculum tools.

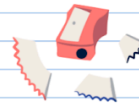
Students in 3k and PK will experience learning through the [Creative Curriculum](#). The Family Playlists below provide information about what your child is learning each month and how you can extend the learning at home.

[September](#) [October](#) [November](#) [December](#) [January](#)
[February](#) [March](#) [April](#) [May](#) [June](#)

Phonics & Phonemic Awareness - will be taught using Heggerty and Foundations.

Students in grades K -8 will experience literacy learning using EL. In our [EL Module](#) [Literacy Field Trip Suggestions](#), you can learn about the topics your children are exploring each month and get ideas for trips that support learning beyond the classroom.

Math- New York City Public Schools aims to disrupt inequities in mathematics





education for all students, with particular attention to those who have been historically marginalized students in our system.

[NYC Solves](#)

District 1 is preparing to launch an initiative called NYC Solves. The goal is to ensure that all New York City students develop math skills, a critical requirement for educational, career, and lifetime success. Based on extensive research, NYC Solves will ensure that students use high-quality curricula taught by well-trained and coached teachers.

As part of the NYC Solves initiative, all high schools will use Illustrative Mathematics and Districts will choose a comprehensive, evidence-based curriculum for middle school math instruction from an approved list. You can learn more about the [Illustrative Mathematics Curriculum](#) on their website.

[NYCPS Shifts in Mathematics](#)

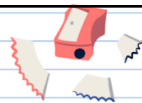
These five shifts will ensure that each student graduates on a pathway to a rewarding career and long-term economic security, equipped to be a positive force of change.

These shifts will also provide quality mathematical tasks, opportunities to strengthen math language development and accessibility for diverse learners in alignment with the principles of [Culturally Responsive-Sustaining Education in Mathematics](#).

There are several [Parent Resources on the New York State Education Department](#) website which may help to answer your questions around state testing. Please use this [link](#) to access those resources,

Mental Health Partnership - Families Thriving

Mental health is health! Thanks to our partnership with Trinity Church Wall Street and University Settlement, all District 1 students and families have access to wraparound mental health services with [Families Thriving](#). Families Thriving aims to uplift emotional well-being by partnering with our school communities to increase access to services and individualize and integrate support for each school.





Regardless of your insurance, Families Thriving can offer:

- Individual and family therapy
- Social-emotional skill-building (communication skills, social skills, healthy coping skills, etc.)
- Triple P (Positive Parenting Program) or parent psychoeducation
- Crisis avoidance
- Psychoeducation for teachers
- Connections to University Settlement's continuum of mental health services (including Home Based Crisis Intervention, Care Coordination, and Peer Advocacy)

Referrals can be made using [this link](#) or through your school. Questions can be directed to FT@universitysettlement.org.

Safety, Culture & Climate - Ensuring students are safe and learning in environments that are welcoming and affirming is the District's number one priority. To that end, the district adheres to the city-wide [Discipline Code](#) and [Safe Schools](#).

Please use this [get help page](#) for guidance about the appropriate people in your school or district to reach and for information to look up their contact information.

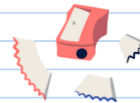
Student Services - District 1 serves a diverse population of learners. We strive to create welcoming and affirming environments that support students' personal and academic growth.

[LGBTQ Supports](#)

The New York City Department of Education (NYCDOE) supports lesbian, gay, bisexual, transgender, and queer or questioning (LGBTQ+) students, families, and staff across the five boroughs through a variety of policies and programs.

[Respect for All Support](#)

The NYCDOE is committed to maintaining a safe and supportive learning





environment that is free from harassment, intimidation and/or bullying, sexual harassment, and discrimination on account of actual or perceived race, color, age, creed, ethnicity, national origin, citizenship/immigration status, religion, gender, gender identity, gender expression, sexual orientation, disability, or weight.

The NYCDOE Respect for All (RFA) program was launched in 2007 to build the capacity of staff and students to actively promote a community of inclusion in each of our schools. The importance of promoting respect for diversity in our daily practice is vital to creating and sustaining an inclusive school climate and culture in each of our schools so that all students feel valued, supported and safe.

Digital Citizenship

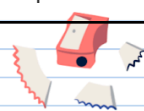
Both parents and teachers need to help students be good digital citizens. They both need to support students in using the internet in ways that are safe, responsible, and appropriate. They also help students follow the rules and act in ways that lead to effective digital learning.

Special Education

Special Education includes services, programs, and specially designed instruction to meet the individual needs of a student with a disability. Students with disabilities who require special education services have Individualized Education Programs (IEPs). The IEP is created by a team that includes you, the family.

Specialized Programs- Some students with IEPs attend one of our specialized programs in district schools such as NEST, Horizon, or PATH. While other students require the support of a District 75 program or an accessible school building. The IEP team will conduct evaluations to determine which school setting will best support your child in reaching his or her academic goals.

Preschool Students- Preschool special education services can support children ages three to five with disabilities or delays in development. Preschool services





can help support a child's learning, speech and language, physical development, social-emotional skills, and other areas.

Kindergarten Students- New York City Public Schools (NYCPS) will work with you to consider whether your child needs special education in Kindergarten, and if so, develop an [Individualized Education Program \(IEP\)](#). This is called the "Kindergarten IEP Process" or "KIP," and your participation is important.

Middle School Students- The expectations and schedule in middle school may be different from what your child experienced in elementary school. Continue to work alongside your team for these changes. Additionally, you and your child should begin to plan for the transition to High School as early as sixth grade. The next link has some recommended steps you can take with your IEP team to prepare when your child is in sixth, seventh, and eighth grade.

High School Students- Every high school is expected to welcome and serve students with disabilities. Students who have IEPs take part in the same admissions process as their non-disabled peers.

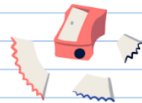
Transition from High School- For students with IEPs, "Transition" means planning for adulthood. Planning should begin when students turn 12. This link goes into detail of what planning should look like.

Support Contacts- [Here](#) is a list of contacts that can help answer questions and resolve concerns about your child's special education evaluation, support, and services.

Multilingual Learners

English Language Learners

Please use the following links to get information about support for students and families whose home language is not English and who need support learning





English.

[Annual Parent Teacher Meetings for English Language Learners](#)

See questions to ask at the annual meeting for parents of English language learners about their child's academic and language progress in school.

[Bill of Rights for Parents of English Language Learners](#)

Learn about your rights as a parent of an English Language Learner.

[College-Career Readiness for English Language Learners](#)

Read how your child can go to college, and hear firsthand from students about getting there.

[Community Organizations that Help Multilingual and Immigrant Families](#)

See the list of community organizations and their contact information for getting help as multilingual and immigrant families.

[Multilingual and Immigrant Student Support Resource Site](#)

On this site, you will find relevant resources for schools, students, and families. The site also features select professional learning opportunities for teachers, parent coordinators, school counselors, and social workers, as well as student and family opportunities.

[English Language Learners](#)

An English Language Learner, or ELL, is a student who speaks a language other than English at home and needs support learning English.

[Tests for English Language Learners](#)

Students who are unable to understand the math and science State tests in English may take versions translated into Chinese (traditional), Haitian Creole, Korean, Russian, or Spanish. When tests are not available in the student's native language, the test may be translated orally to the student. Students who have been in the United States for less than one year are not required to take the New York State English Language Arts test in their grade but must start taking English Language Arts tests after their first year.

