



**Title of the Manuscript: Clear, Concise, and Descriptive (Maximum 15 Words; Every Content Word Capitalised)**

**First Author<sup>1\*</sup>, Second Author<sup>2</sup>, Third Author<sup>3</sup> ← 12pt, Bell MT, Bold**

<sup>1</sup>Department of First Author, Name of University, Name of Province/State, Name of Country ← 10pt

<sup>2</sup>Department of Second Author, Name of University, Name of Province/State, Name of Country ← 10pt

<sup>3</sup>Department of Third Author, Name of University, Name of Province/State, Name of Country ← 10pt

\*Corresponding author email ← 10pt

**ARTICLE HISTORY**

Received: DD Month YYYY

Revised: DD Month YYYY

Accepted: DD Month YYYY

Published Online: DD Month YYYY

**Keywords:**

Keyword 1;

Keyword 2;

Keyword 3;

Keyword 4;

Keyword 5

*This is an open-access article under the  
CC BY-NC licence*

<https://creativecommons.org/licenses/by-nc/4.0/>

e-ISSN 2655-9927

**ABSTRACT**

**Background:** Provide 1–2 sentences describing the context and gap that motivates the study.

**Objective:** State the specific aim(s) of the study in one clear sentence.

**Methods:** Summarise the study design, key materials, experimental procedures, and the main statistical or analytical technique(s).

**Results:** Report the principal quantitative findings. Include the most important numerical values with units and measures of variability when appropriate.

**Conclusion:** State the main conclusion(s), emphasising novelty, significance, and relevance of the findings to biology and its applications.

*Note: The structured abstract is written as a single paragraph of 200–250 words. References, figures, tables, equations, and uncommon abbreviations must be avoided.*

**How to Cite:** Author, A. A., Author, B. B., & Author, C. C. (YYYY). Title of the article. *Jurnal Riset Biologi dan Aplikasinya*, XX(X), XX–XX. <https://doi.org/10.26740/jrba.vXXnX.pXX-XX>

**INTRODUCTION ← 13pt, Bell MT, Bold, UPPERCASE**

The manuscript body is typed in Bell MT 11 pt, line spacing 1.15, on A4 paper with 2.5 cm margins on all sides, justified alignment, first-line indent 1.27 cm. The Introduction should provide a concise background, making the manuscript accessible to non-specialists, and must not exceed six paragraphs.

The Introduction should cover four elements: (i) the broader problem the study addresses; (ii) a state-of-the-art review citing at least ten peer-reviewed journal articles, preferably published within the last five years, to position the work within current literature; (iii) the research gap and novelty, explicitly articulated using phrases such as "however," "remains unclear," "few data exist," or "has not been well understood"; and (iv) a clear statement of the objective(s) of the study, placed at the end of the section.

In-text citations follow the APA 7th edition style, e.g., Ambarwati (2023) or (Ambarwati & Faizah, 2023). Three or more authors are cited as Ambarwati et al. (2023). Citations are managed using a reference manager such as Mendeley or Zotero. Each cited reference must appear in the Reference List and vice versa.

All papers submitted to the journal should be written in good English. Authors for whom English is not their native language are encouraged to have their paper checked before submission for grammar and clarity. English language and copyediting services can be provided by: International Science Editing and Asia Science Editing. The work should not have been published or submitted for publication elsewhere. The official language of the manuscript to be published in the Infinity Journal is English.

The contents of the Method are typed in Bell MT Font 11-point line spacing, paragraph special first line 1.27 cm.

## **MATERIALS AND METHODS ← 13pt, Bell MT, Bold, UPPERCASE**

The Materials and Methods section must provide sufficient detail for other researchers to reproduce the work. Only critical techniques are described. Commonly used equipment need not be specified, but test equipment must be identified by type or specification (brand names are optional). Previously published methods are indicated by citation; only modifications are described in detail.

### **Study Area and Materials**

Describe the study site, sampling strategy, and materials used. For exploratory or field-based studies, provide a clearly drawn sampling-location map produced by the authors (not a screen-capture of Google Maps or Google Earth). Sampling procedures including stations, substations, and subplot sampling must also be clearly stated.

### **Experimental Design**

For experimental studies, state the design (e.g., Completely Randomised Design, Randomised Block Design, factorial). Specify the treatments, replications, and response variables.

### **Data Analysis**

Describe the statistical or analytical procedures, including the software and version used (e.g., SPSS 26.0, R 4.3.1, PAST 4.03). State the significance level and post-hoc tests where applicable.

## Ethical Approval

If applicable (studies involving vertebrates, human subjects, or protected species): "This study was approved by the Ethics Committee of [Institution], approval number [XXXX]."

If not applicable: "This study did not require ethical approval because it did not involve human participants or vertebrate animals."

## RESULTS AND DISCUSSION ← 13pt, Times New Roman, Bold

Results and Discussion are combined. Each result is immediately followed by its interpretation. Data presented must be processed (not raw). Illustrations (tables and figures) are used only when they clarify the narrative; already-illustrated results are not repeated in lengthy text descriptions.

All quantitative measurements use SI (International System) units. Mathematical equations are produced with Equation Editor or MathType (not inserted as images). Decimal separators follow the language of the manuscript: period (.) for English.

Scientific names follow the relevant nomenclatural codes: ICZN for animals, ICN (formerly ICBN) for plants, ICNP for prokaryotes, and ICTV for viruses. Genus and species names are italicised (e.g., *Meretrix meretrix*).

### Tables

Tables are numbered consecutively in the order they are cited in the text. The title is placed above the table, short, without closing punctuation. Tables are presented in an open format (only horizontal rules at the head and foot of the table; no vertical rules; no shading). Submit tables as editable text, not as images. Footnotes appear directly below the table body.

**Table 1.** Example of a properly formatted open table (no vertical lines; horizontal rules only at head and foot)

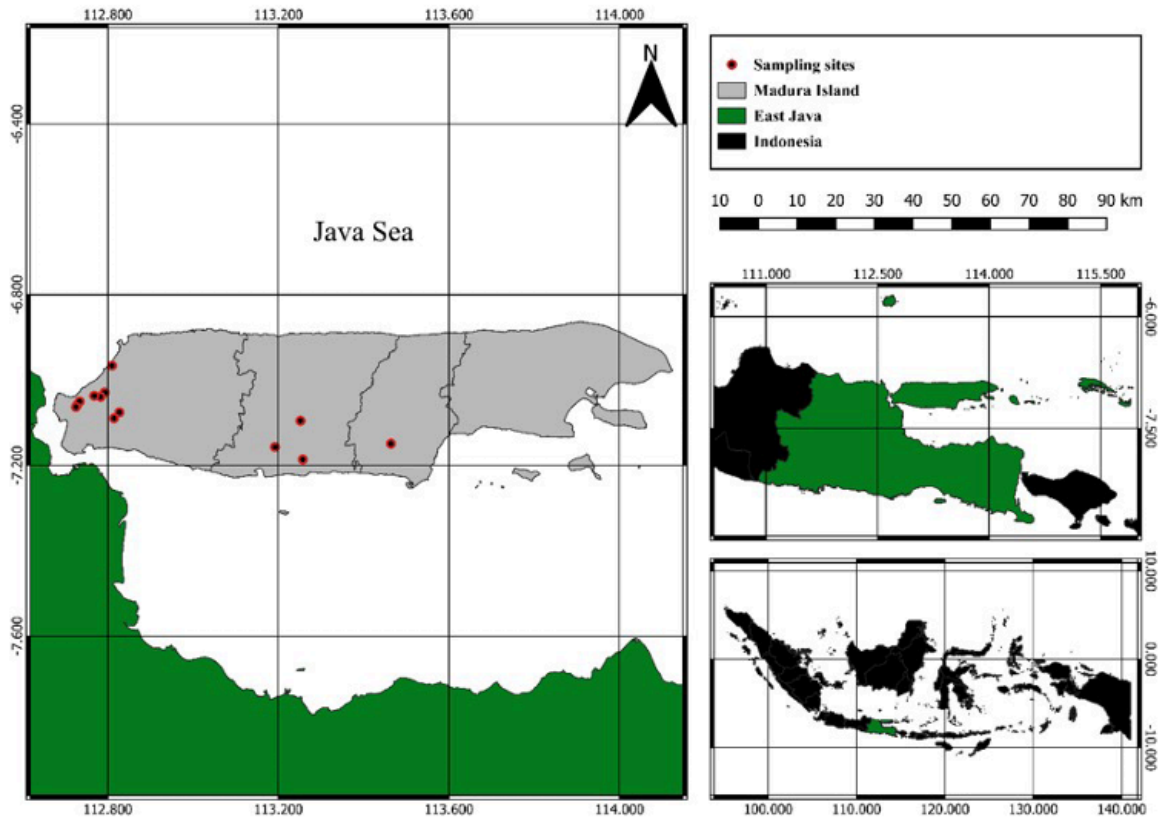
Parameter	Treatment A	Treatment B	Treatment C
Growth rate (%)	12.4 ± 1.2 <sup>a</sup>	18.7 ± 0.9 <sup>b</sup>	24.1 ± 1.5 <sup>c</sup>
Survival (%)	85.0 ± 2.1	90.3 ± 1.8	94.7 ± 1.2
Biomass (g)	3.2 ± 0.4	4.8 ± 0.3	6.5 ± 0.5

Note: Values are mean ± standard deviation (n = 3). Different superscript letters within the same row indicate significant differences (p < 0.05).

### Figures

Figures include photographs, graphs, maps, and diagrams. The figure title is placed below the figure. Photographs must be high-resolution (minimum 300 dpi; 600 dpi for high-quality images). Graphs and diagrams are presented without outer frames or background gridlines; avoid dot-pattern fills. Colour figures are accepted, but authors should ensure the figures remain good quality. Each

figure must include a self-contained caption, including a brief title and a description of all panels, scale bars, and abbreviations.

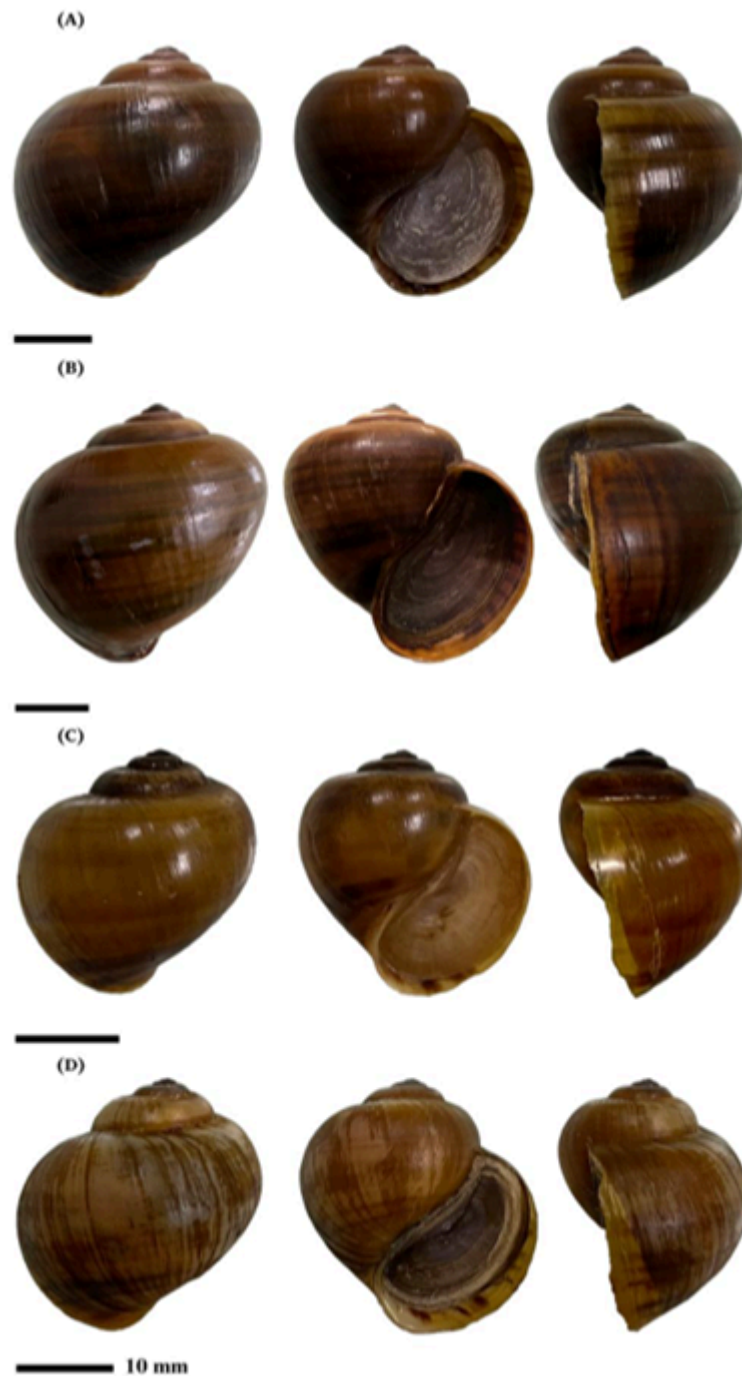


**Figure 1.** Short, descriptive caption placed below the figure; each panel and symbol explained explicitly so that the figure is self-contained

## Equations

Equations are numbered consecutively in parentheses placed flush right. Equations are prepared using Equation Editor or MathType (not as images). Punctuation of an equation follows the surrounding sentence.

$$c^2 = a^2 + b^2 \quad (1)$$



**Figure 2.** *Pila celebensis* from Madura Island: A) River Flow of Bangkalan Regency, B) Rice Field of South Poter Village, Tanah Merah Subdistrict, Bangkalan Regency, C) River Flow of Nyalabuh Laok Village, Pamekasan Regency, D) Rice fields of Torjun Village, Keddeng Hamlet, Sampang Regency

The discussion explains the significance of the results in relation to the stated objectives and existing literature. It should (i) interpret each major finding; (ii) compare the results with previous

studies, citing journal articles preferably from the last five years; (iii) address the study's limitations; and (iv) explain the scientific novelty and practical implications of the work. The discussion must not merely repeat the results.

## **CONCLUSION ← 13pt, BELL MT, Bold, UPPERCASE**

The Conclusion should contain the confirmation of the problem that has been analyzed in result and discussion section. The Conclusion should contain the confirmation of the problem that has been analyzed in result and discussion section. The Conclusion should contain the confirmation of the problem that has been analyzed in result and discussion section.

## **ACKNOWLEDGMENTS ← 13pt, Times New Roman, Bold**

Place Acknowledgments, including information on the source of any financial support received for the work being published. Place Acknowledgments, including information on the source of any financial support received for the work being published.

## **DECLARATIONS ← 13pt, Times New Roman, Bold**

- Author Contributions** : Describe each author's contribution using the CRediT taxonomy (<https://credit.niso.org/>). Example — Author 1: Conceptualisation, Methodology, Writing – Original Draft; Author 2: Formal Analysis, Investigation, Writing – Review & Editing; Author 3: Supervision, Funding Acquisition. All authors have read and approved the final manuscript.
- Funding** : State all sources of funding, including grant numbers. Example: "This research was funded by the Ministry of Education, Culture, Research, and Technology of the Republic of Indonesia under grant number XX/XX/YYYY." If there is no funding, state: "This research received no external funding."
- Conflict of Interest** : The authors declare no conflict of interest. / The authors declare the following conflicts of interest: [describe].
- Data Availability** : State where readers can access the data supporting the findings. Example: "The datasets generated and/or analysed during the current study are available from the corresponding author upon reasonable request." or provide a repository link and DOI (Figshare, Dryad, Zenodo, GenBank accession numbers, etc.).

- Ethical Approval** : State the ethical approval number and issuing committee, or state that ethical approval was not required. For plant or microbial materials, mention relevant permits (e.g., SIMAKSI, CITES).
- Declaration of AI Use** : If AI tools (e.g., ChatGPT, Gemini, Copilot, Grammarly) were used, specify the tool, version, and purpose (e.g., language polishing, code drafting). State that the authors reviewed and take full responsibility for the final content. If no AI tools were used, state: "The author(s) affirm that no artificial intelligence (AI) tools, services, or technologies were employed in the creation, editing, or refinement of this manuscript. All content presented is the result of the independent intellectual efforts of the author(s), ensuring originality and integrity."

## REFERENCES

The reference list follows the APA 7th edition style and is arranged alphabetically. A minimum of 25 references is required for Research Articles; at least 80 % must be journal articles published within the last 10 years. DOIs must be included where available. Authors are strongly recommended to use a reference manager (Mendeley, Zotero, EndNote).

### *Journal Article*

Ambarwati, R., Rahayu, D. A., Rachmadiarti, F., & Khaleyla, F. (2021). DNA barcoding of lamp shells (Brachiopoda: *Lingula anatina*) from Probolinggo, East Java, Indonesia. *Biodiversitas*, 22(4), 1764–1774. <https://doi.org/10.13057/biodiv/d220421>

### *Book*

Huber, M. (2010). *Compendium of Bivalves: A Full-Colour Guide to 3,300 of the World's Marine Bivalves*. ConchBooks.

### *Book Chapter*

Poutiers, J. M. (1998). Bivalves (Acephala, Lamellibranchia, Pelecypoda). In K. E. Carpenter & V. H. Niem (Eds.), *FAO Species Identification Guide for Fishery Purposes: The Living Marine Resources of the Western Central Pacific* (Vol. 1, pp. 123–362). FAO.

### *Conference Proceedings*

Rahardjanto, A., Tosiyan, V. R., Husamah, H., & Miharja, F. J. (2020). Diversity of molluscs in the mangrove forest area of Cengkong Beach, Trenggalek. *AIP Conference Proceedings*, 2231(1), 040050. <https://doi.org/10.1063/5.0002618>

### *Thesis / Dissertation*

Juniar, A. (2021). *Genetic identification of Clithon oualaniense (Gastropoda: Neritidae) from Madura, Indonesia* [Master's thesis, Universitas Negeri Surabaya].

**Website / Online Database**

MolluscaBase Editors. (2021). *MolluscaBase: Meretrix Lamarck, 1799*. World Register of Marine Species.

Retrieved May 10, 2021, from <http://www.marinespecies.org/aphia.php?p=taxdetails&id=204011>

**Each reference in the bibliography tagged with a Word bookmark**

**In-text citations linked (cross-referenced) to those bookmarks, so clicking a citation jumps to the reference**

**RESEARCH HIGHLIGHTS**

*Provide 3–5 concise bullet points summarising the key findings. Each point should be a single sentence (maximum 85 characters including spaces).*

- First novel finding of the study (max 85 characters).
- Second novel finding of the study.
- Third novel finding of the study.
- Fourth novel finding or key implication of the study.

**GRAPHICAL ABSTRACT**

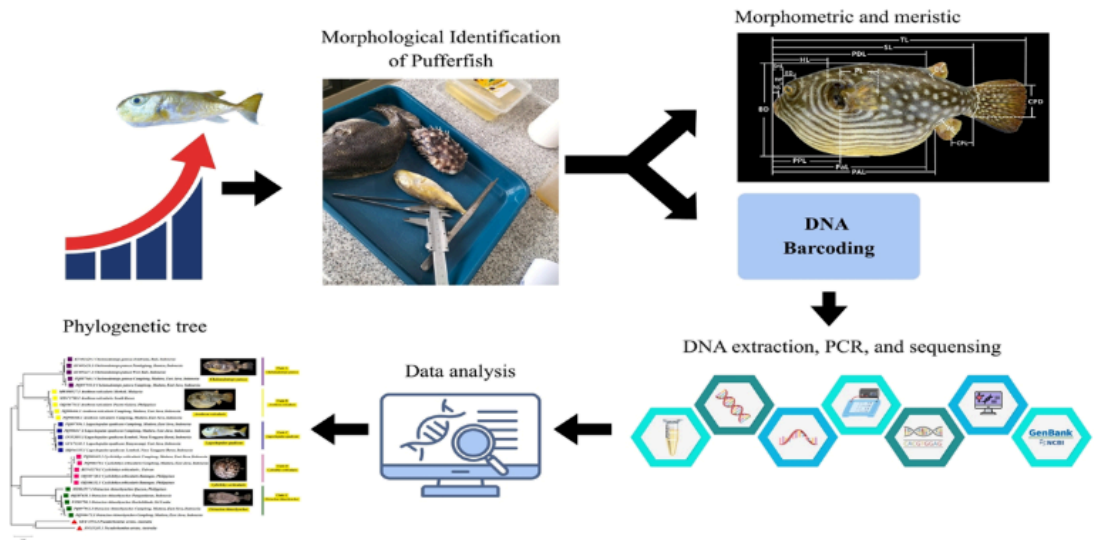
A graphical abstract is a brief, single visual representation that summarizes the main findings of a research study. Its purpose is to draw readers' attention and provide a clearer visual grasp of the study's content. Additionally, it aims to stimulate browsing, foster interdisciplinary engagement, and enable readers to quickly determine which articles align with their research interests. An example of a graphical abstract is provided below for reference.

**Author Guidelines**

1. Submit an image that accurately reflects the findings of the research.
2. Keep the visual straightforward yet informative.
3. Using colors is recommended.
4. The visual must maintain the quality expected of a scholarly and professional publication.
5. The artwork submitted must be original and previously unpublished.
6. Do not include photographs, illustrations, or caricatures depicting any individual, whether alive or deceased.
7. Image dimensions: the graphic should measure 500 x 800 pixels (height x width). Any text must appear in Times New Roman, 10pt.
8. Image quality: a minimum resolution of 600 dpi/HD is required.
9. Accepted file format: PowerPoint (ppt).

- The graphical abstract must be uploaded separately through the online submission platform (as a supplementary file). Alternatively, it may be sent via email to [jrba@unesa.ac.id](mailto:jrba@unesa.ac.id) once the manuscript has been accepted. Kindly include the manuscript ID in the email's subject line.

**Contoh Graphical Abstract**



## APPENDIX: SUMMARY OF FORMATTING RULES

Element	Specification	Alignment
<b>Paper size</b>	A4 (210 × 297 mm)	—
<b>Margins</b>	2.5 cm on all sides	—
<b>Body font</b>	Bell MT11 pt, line spacing 1.15	Justified
<b>Title</b>	BELL MT 14 pt, Bold, Sentence case, max 15 words	Centered
<b>Authors</b>	BELL MT 12 pt, Bold	Centered
<b>Affiliation</b>	BELL MT 10 pt, superscript numerals	Centered
<b>Abstract</b>	BELL MT 10 pt, single paragraph, 200–250 words	Justified
<b>Keywords</b>	BELL MT 10 pt, 3–5 keywords, alphabetical, separated by ";"	Left
<b>Heading 1</b>	Bell MT 12 pt, Bold, UPPERCASE (numbered 1., 2., ...)	Left
<b>Heading 2</b>	BELL MT 11 pt, Bold, Title Case (numbered 2.1, 2.2, ...)	Left
<b>Table title</b>	Bell MT 10 pt, Bold "Table 1." then regular text	Left, above table
<b>Figure caption</b>	BELL MT 10 pt, Bold "Figure 1." then regular text	Centered, below figure
<b>References</b>	APA 7th edition, hanging indent 0.5 in, DOIs required	Justified
<b>Manuscript length</b>	Research Article: 4,000–7,000 words (excluding references)	—
<b>Abstract length</b>	200–250 words	—
<b>Reference count</b>	Minimum 25; ≥ 80 % journal articles from last 10 years	—

Element	Specification	Alignment
	<p><b>Each reference in the bibliography tagged with a Word bookmark</b></p> <p><b>In-text citations linked (cross-referenced) to those bookmarks, so clicking a citation jumps to the reference</b></p>	

## SUBMISSION CHECKLIST

*Before submission, please verify that the manuscript satisfies the following requirements.*

- Manuscript prepared using this template (Bell MT a 11 pt, A4, 2.5 cm margins, line spacing 1.15).
- Title does not exceed 15 words and contains no uncommon abbreviations.
- Structured abstract (Background, Objective, Methods, Results, Conclusion) of 200–250 words.
- 3–5 keywords provided in alphabetical order, separated by semicolons, and not duplicating the title.
- All authors' full names, affiliations, and corresponding author e-mail are included.
- In-text citations follow APA 7th edition and are all listed in the References section (and vice versa).
- Minimum of 25 references, with at least 80 % from journal articles published in the last 10 years.
- All references include DOIs where available.
- All tables are editable text (not images), in open format, with horizontal rules only.
- All figures are high resolution ( $\geq 300$  dpi), with self-contained captions below the figure.
- Scientific names are italicised and conform to the relevant nomenclatural code.
- Declarations completed: Author Contributions (CRediT), Funding, Conflict of Interest, Data Availability, Ethical Approval, Informed Consent (if applicable), AI Use.
- Research Highlights (3–5 bullet points,  $\leq 85$  characters each) provided.
- Supplementary materials (if any) uploaded as separate files.
- Cover letter uploaded as a supplementary file.
- Similarity check (Turnitin / iThenticate)  $\leq 20$  %, excluding references.
- 3-5 highlighted research
- Graphical abstract

### List of five potential reviewers

(Fill in names of five potential reviewers **that agree to review your manuscript** and their **email** addresses. He/she should have Scopus ID and come from different institution with the authors; and from at least three different countries)



---

***Jurnal Riset Biologi dan Aplikasinya (JRBA)***

*Published by the Department of Biology, Faculty of Mathematics and Natural Sciences, Universitas Negeri Surabaya*

<https://journal.unesa.ac.id/index.php/risetbiologi>