

# UNIVERSAL SPEAKER



## Universal Speaker ZS-1030B

The ZS-1030B is a small, 2-way bass-reflex type speaker featuring a wide frequency range suitable for use for announcements and music playback. The ZS-1030B can be used for both high-impedance and low-impedance applications. The speaker's splash-proof construction permits it to be installed under the eaves where the speaker is not directly exposed to rain



Rated Input	: 30 W
Speaker Component	: 12 cm cone-type + 2.5 dome-type
Frequency Response	: 70 Hz - 20 kHz
Sound Pressure Level	: 90 dB (1 W, 1 m)
Water Protection	: IPX4 (can be installed vertically or horizontally*)
Dimension	: 196mm × 290mm × 150mm
Weight	: 2.5 kg



## DISPERSION CEILING SPEAKER

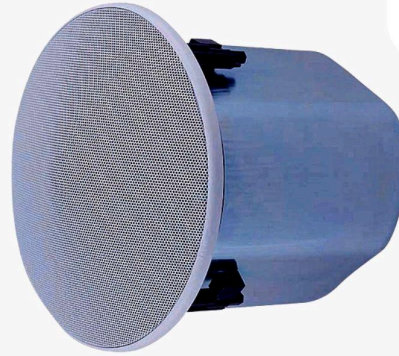


**DISTRIBUTOR, SUPPLIER**  
Jl. Hutan Kelapa No. 11A, 40130 Medan, Sumatera Utara  
Kec. Medan Timur, Kota Medan  
1201212801001  
Email: [jucakristiawan@gmail.com](mailto:jucakristiawan@gmail.com)

### Dispersion Ceiling Speaker **Z-2352C**

Z-2352C ceiling and wall mounted speaker covers an extremely wide area and can be used for 25, 70 and 100V line applications. Well-balanced sound can be heard uniformly at any location.

Enclosure	: Bass reflex type
Rated Input	: 30W (High impedance)
Sound Pressure Level	: 90dB (1W, 1m)
Frequency Response	: 70Hz-20kHz (-10dB), 50Hz-20kHz (-20dB)
Speaker Component	: High Frequency (Balanced dome-type), Low Frequency (12 cm cone-type)
Mounting Hole	: $\phi$ 200mm (maximum ceiling thickness : 37mm)
Dimension	: $\phi$ 230 x 299 (D) mm
Weight	: 3.7kg (including mounting accessories)



## CEILING MOUNT SPEAKER



### Ceiling Mount Speaker ZS-1860



The ZS-1860-AS Ceiling Mount Speaker is ideal for use in a voice alarm system or BGM system. It features a spring clamp mechanism for easy mounting to the ceiling.

Rated Noise Power	: 6 W (100 V Line), 3 W (70 V Line)
Rated Impedance	: 100 V line: 1.7 k $\Omega$ (6 W), 3.3 k $\Omega$ (3 W), 6.7 k $\Omega$ (1.5 W), 13 k $\Omega$ (0.8 W) 70 V line: 1.7 k $\Omega$ (3 W), 3.3 k $\Omega$ (1.5 W), 6.7 k $\Omega$ (0.8 W), 13 k $\Omega$ (0.4 W)
Speaker Component	: 12 cm (5") cone-type
Speaker Mounting Method	: Suspension Spring
Connection	: Push wire connection (bridging terminal 2-branch type)
Dimension	: $\phi$ 180 × 5 (exposed section) + 65 (D) mm
Weight	: 590gram



### Ceiling Mount Speaker ZS-1860F-AS



The ZS-1860F-AS Ceiling Mount Speaker features an iron-made dome that prevents the fire from spreading in the ceiling, in case of an emergency situation. The ZS-1860F-AS is suitable for announcement and music use in high quality sound cone speaker.

Rated Noise Power	: 6 W (100 V Line), 3 W (70 V Line)
Rated Impedance	: 100 V line: 1.7 k $\Omega$ (6 W), 3.3 k $\Omega$ (3 W), 6.7 k $\Omega$ (1.5 W), 13 k $\Omega$ (0.8 W) 70 V line: 1.7 k $\Omega$ (3 W), 3.3 k $\Omega$ (1.5 W), 6.7 k $\Omega$ (0.8 W), 13 k $\Omega$ (0.4 W)
Speaker Component	: 12 cm (5") cone-type
Speaker Mounting Method	: Spring catch
Connection	: Push wire connection (bridging terminal 2-branch type)
Dimension	: $\phi$ 180 × 5 (exposed section) + 100 (D) mm
Weight	: 1 kg

## CEILING MOUNT SPEAKER



### Ceiling Mount Speaker ZS-1869

Integrated with a speaker unit and panel, the ZS-1869 Ceiling Mount Speaker is of all metallic construction and ideal for use in a voice alarm system. It feature spring clamp mechanism for easy speaker mounting to the ceiling.



Rated Input	: 6 W (100 V line)
Rated Impedance	: 100 V line: 1.7 k $\Omega$ (6 W), 3.3 k $\Omega$ (3 W), 6.7 k $\Omega$ (1.5 W), 13 k $\Omega$ (0.8 W)
Speaker Component	: 12 cm (5") cone-type
Speaker Mounting Method	: Spring clamp
Connection	: Push-in connector (bridging terminal-2 branch type)
Dimension	: $\varnothing$ 180 × 72 (D) mm
Weight	: 620 gram



### Ceiling Mount Speaker ZS-2369

The ZS-2369 Ceiling Mount Speaker is of all metallic construction and ideal for use in a voice alarm system. It feature spring clamp mechanism for easy speaker mounting to the ceiling.



Rated Input	: 6 W (100 V line)
Rated Impedance	: 100 V line: 1.7 k $\Omega$ (6 W), 3.3 k $\Omega$ (3 W), 6.7 k $\Omega$ (1.5 W), 13 k $\Omega$ (0.8 W)
Speaker Component	: 16 cm (6") double cone-type
Speaker Mounting Method	: Spring clamp
Connection	: Push-in connector (bridging terminal-2 branch type)
Dimension	: $\varnothing$ 230 × 79 (D) mm
Weight	: 760 gram

## CEILING MOUNT SPEAKER



### Ceiling Mount Speaker **ZS-648R**

ZS-648R is the ceiling mount speaker with a metal attached. It features spring clamp mechanism for easy speaker mounting to the ceiling. The input impedance can be easily changed by changing the tap position of the transformer.

Rated Input : 6W (100 V line), 3W (70 V line)  
Frequency Response : 100Hz-18kHz (peak -20 dB)  
Speaker Component : 12 cm (5") cone-type  
Dimension :  $\Phi 168 \times 77$  (D) mm  
Weight : 470g



## SPEAKER SYSTEM



### Speaker System ZS-F2000BM

The ZS-F2000BM Series Speaker are compact two-way speaker systems designed for high efficiency, wide range, and high power input handling capability. These speaker systems can be installed in a manner ideal for the location and intended application.

Rated Input	: 60 W (high impedance)
Enclosure	: Bass-reflex type
Speaker Component	: Low frequency: 20 cm (8") cone-type, High frequency: 25 mm (1") dome tweeter
Input Terminal	: Push-in terminal
Connection	: Push-in connector (bridging terminal-2 branch type)
Dimension	: 244mm × 373mm × 235mm
Weight	: 7.4 kg



## GARDEN SPEAKER



### Garden Speaker ZGS-301

The ZGS-301 is a compact Garden Speaker ideal for peging and background music broadcast in such places as gardens, theme parks and resort facilities. Corrosion resistant material is adopted to the speaker exterior, ensuring prolonged use of the speaker in a water-splashed environment.



Rated Impedance	: 30 W (100 V line), 15 W (70 V line) : 12 cm splash-proof cone-type
Speaker Component	: 100 - 8,000 Hz
Frequency Response	: Solid copper wire: $\phi 0.8 - \phi 1.6$ mm, Stranded cooper wire: 0.75 - 1.25 mm <sup>2</sup>
Rated Input	: 100 V line: 330 $\Omega$ (30 W), 670 $\Omega$ (15 W), 1 k $\Omega$ (10 W), 2 k $\Omega$ (5 W), 3.3 k $\Omega$ (3 W)
Applicable Cable	: 70 V line: 330 $\Omega$ (15 W), 670 $\Omega$ (7.5 W), 1 k $\Omega$ (5 W), 2 k $\Omega$ (2.5 W), 3.3 k $\Omega$ (1.5 W)
Water Capability	: Equivalent to IPX4
Dimension	: $\phi 270 \times 335$ (H) mm
Weight	: 2.4 kg

# DIGITAL MATRIX



## Digital Matrix Mixer M-9000M2



The M-9000M2 Pre-Amplifier is designed to be used in conjunction with optional modules and can be configured for up to 8 inputs and 8 outputs. 9000 series modules as well as existing 900 series input modules can be used. The most applications. It is

equipped with signal processing and control functions necessary for sound reinforcement, permitting all parameters to be set at the mixer. Settings data can be stored inside the unit and called up using the keys on the front panel.

Power Source	: 220 - 240 V AC, 50/60 Hz
Power Consumption	: 40W
Digital Audio Signal Reference Level	: -20 dBFS
Frequency Response	: 20 Hz - 20 kHz, +1, -3 dB
Speaker Equalizer	: 10 (setup software has 30 TOA speaker presets)
Parametric Equalizer	: 10 bands, Frequency: 20 Hz - 20 kHz, 31 points, Variable range: $\pm 12$ dB, Q: 0.3 - 5
Dimension	: 420mm $\times$ 107.6mm $\times$ 353mm
Weight	: 6 kg



# SYSTEM MANAGEMENT AMPLIFIER



## System Management Amplifier VM-2120



The VM-2120 is a multifunctional amplifier that can be mounted in an EIA-Standard equipment rack (3-unit size). The unit comes with 4 audio inputs including the background music with input, and the speaker output section which has internal attenuator and 5-zone selector.

Power Consumption	: With no signal present: 37 W, Under normal operating conditions according to EN60065: 1998 sec. 4.2: 107 W, With rated output signal: 201 W
Current Consumption	: With no signal present: 0.7 A, Under normal operating conditions according to EN60065: 1998 sec. 4.2: 2.1 A, With rated output signal: 5.2 A
Rated Output	: 120W
Frequency Response	: 50 Hz - 16 kHz
Distortion	: 1 % or less
Power Supply	: 24 V DC/0.1 A, Unit RU-2001/-2002
Dimension	: 419mm × 143.3mm × 355.7mm
Weight	: 12.5 kg



## System Management Amplifier VM-2240



The VM-2240 is multifunctional amplifier that can be mounted in an EIA-Standard equipment rack (3-unit size). The unit comes with 4 audio inputs including the background music input, and the speaker output section which has an internal attenuator and 5-zone selector.

Power Consumption	: With no signal present: 54 W, Under normal operating conditions according to EN60065: 1998 sec. 4.2: 255 W, With rated output signal: 549 W
Current Consumption	: With no signal present: 1 A, Under normal operating conditions according to EN60065: 1998 sec. 4.2: 5 A, With rated output signal: 14 A
Rated Output	: 240W
Frequency Response	: 50 Hz - 16 kHz
Distortion	: 1 % or less
Power Supply	: 24 V DC/0.1 A, Unit RU-2001/-2002
Dimension	: 419mm × 143.3mm × 355.7mm
Weight	: 14.5 kg

## POWER AMPLIFIER



### Power Amplifier ZA-2120



The ZA-2120 is a high cost-performance power amplifier suited for broadcasting paging or background music in schools, offices, shops, factories, mosques, churches, and large rooms.

Power Source	: 220 - 240 V AC, or 24 V DC
Frequency Response	: 50 - 20,000 Hz ( $\pm 3$ dB)
Distortion	: Less Than 1% at 1 kHz, 1/3 rated power
Indicator	: Power LED, signal LED, peak LED
Muting	: MIC 1: Mutes other input signals by 0 - 30 dB attenuation
Dimension	: 420mm $\times$ 101mm $\times$ 360mm
Weight	: 10.8 kg



### Power Amplifier ZA-2240



The ZA-2240 is a high cost-performance power amplifier suited for broadcasting paging or background music in schools, offices, shops, factories, mosques, churches, and large rooms.

Power Source	: 220-240 V AC, or 24V DC
Frequency Response	: 50-20,000 Hz ( $\pm 3$ dB)
Distortion	: Less Than 1% at 1 kHz, 1/3 rated power
Indicator	: Power LED, signal LED, peak LED
Muting	: MIC 1: Mutes other input signals by 0 - 30 dB attenuation
Dimension	: 420mm $\times$ 101mm $\times$ 360mm
Weight	: 13.2 kg

## DIGITAL MIXER AMPLIFIER



### Digital Mixer Amplifier ZA-3224DM-AS 1



ZA-3224DM-AS 1 is a high performance yet cost-effective mixer power amplifier equipped with MP3 and Bluetooth function. Ideal for broadcasting, paging, or background music in schools, offices, shops, houses of worship and large ballrooms

Power Source	: 100 - 240 V AC, 50/60Hz or 24 V DC
Frequency Response	: 50 - 20,000 Hz
Distortion	: Under 1% at 1 kHz, 1/3 rated power
Indicator	: Power, Signal, Peak, Protect
Muting	: MIC 1: Mutes other input signals by 0-30 dB attenuation
Dimension	: 420 (W) × 100.9 (H) × 357 (D) mm
Weight	: 5.1 kg

## POWER AMPLIFIER



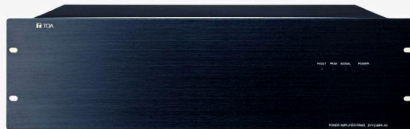
### Power Amplifier Z-FV224PA-AS

Power Source	: AC (220 - 230 V AC, 50/60 Hz), DC (24 V DC (operating range: 19.5 - 27 V))
Power Consumption	: AC at rated output (565W (condition: AC230V)), AC at no signal (22 W)
Speaker Output	: M4 screw terminal, distance between barriers (12 mm)
Control Output	: Fault output (Make : Normal), Break : Error or Power Off
Total Harmonic Distortion	: Under 1% (1kHz, 1/3 rated output)
Frequency Response	: 80Hz - 15kHz, $\pm 3$ dB, 1kHz
Dimensions	: 482mm $\times$ 88.4mm $\times$ 337.2mm
Weight	: 13.3kg

Z-FV224PA-AS features 240W rated output with high capacity for audio requirement



### Power Amplifier Z-FV248PA-AS



The Z-FV248PA-AS features 480W rated output with high capacity for audio requirements.

Power Source	: 220 - 230 V AC, 50/60 Hz; 24 V DC (operating range: 19.5 - 27 V) M4 screw terminal, distance between barriers: 12mm
Rated Output	: 460W
Frequency Response	: 80 Hz - 15 kHz, $\pm 3$ dB, 1 kHz
Distortion	: Under 1% (1 kHz, 1/3 rated output)
Indicator	: Power, Signal, Peak, Fault (Light: overheat)
Speaker Output	: M4 screw terminal, distance between barriers : 12 mm
Dimension	: 482mm $\times$ 132mm $\times$ 333.2mm
Weight	: 18.6 kg

# MIXER PRE-AMPLIFIER



## Mixer Pre-Amplifier Z-MX9200-AS 1



Z-MX9200-AS 1 is a wireless mixer pre-amplifier equipped with 9 inputs including 4 inputs MIC with phantom, 1 selectable inputs with options of MIC or AUX, 3 selectable inputs with options of MIC or LINE and 1 selectable input with option of MIC or streaming from smartphone. Parameter settings like Volume, Bass, Middle, Treble, Mute on individual

input channel and 2 output channels can be easily adjusted remotely with an android touch screen device connected by Bluetooth.

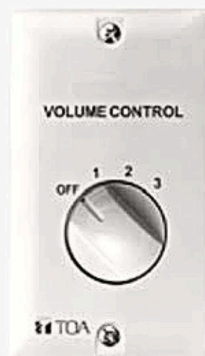
Power Source	: 220 - 240 V AC, 14 W
Distortion	: Under 1 % at 1 kHz, rated power
Connection	: Bluetooth 4.2, USB Type B (PC Setting/Update Firmware)
Frequency Response	: 30 Hz - 20 kHz, $\pm$ 3dB
Tone Control	: Bass $\pm$ 13 dB at 100 Hz, Middle $\pm$ 13 dB at 1 kHz, Treble $\pm$ 13 dB at 10 kHz
Indicator	: LCD display with backlight Green, POWER indicator (Green), STATUS indicator (Green), SIGNAL indicator (Green), PEAK indicator (RED)
Dimension	: 420 x 59 x 339.7mm
Weight	: 3,3 kg

## ATTENUATOR



### Attenuator ZV-064

The ZV-064 is a flush-mounted wall attenuator and uses a transformer which allows connection of a wide range of loads (6W or less). Volume can be adjusted in five steps. The ZV-064 features push-in terminal block for easy connection.



- Level Control : 4 steps
- Input Power : 6W
- Finish : Off-White (ABS Resin Color), Dark Grey (Printing Color)
- Dimensions : 70mm × 120mm × 59mm
- Weight : 190 gram



### Attenuator ZV-303

The ZV-303 is a flush-mounted wall attenuator and uses a transformer which allows connection of a wide range of loads (30W or less). Volume can be adjusted in five steps. The ZV-303 features push-in terminal block for easy connection.



- Level Control : 4 steps
- Input Power : 30W
- Finish : Off-White (ABS Resin Color), Dark Grey (Printing Color)
- Dimensions : 70mm × 120mm × 59mm
- Weight : 190 gram