

ARADER LP

STRATEGY NOTE 6/26/25

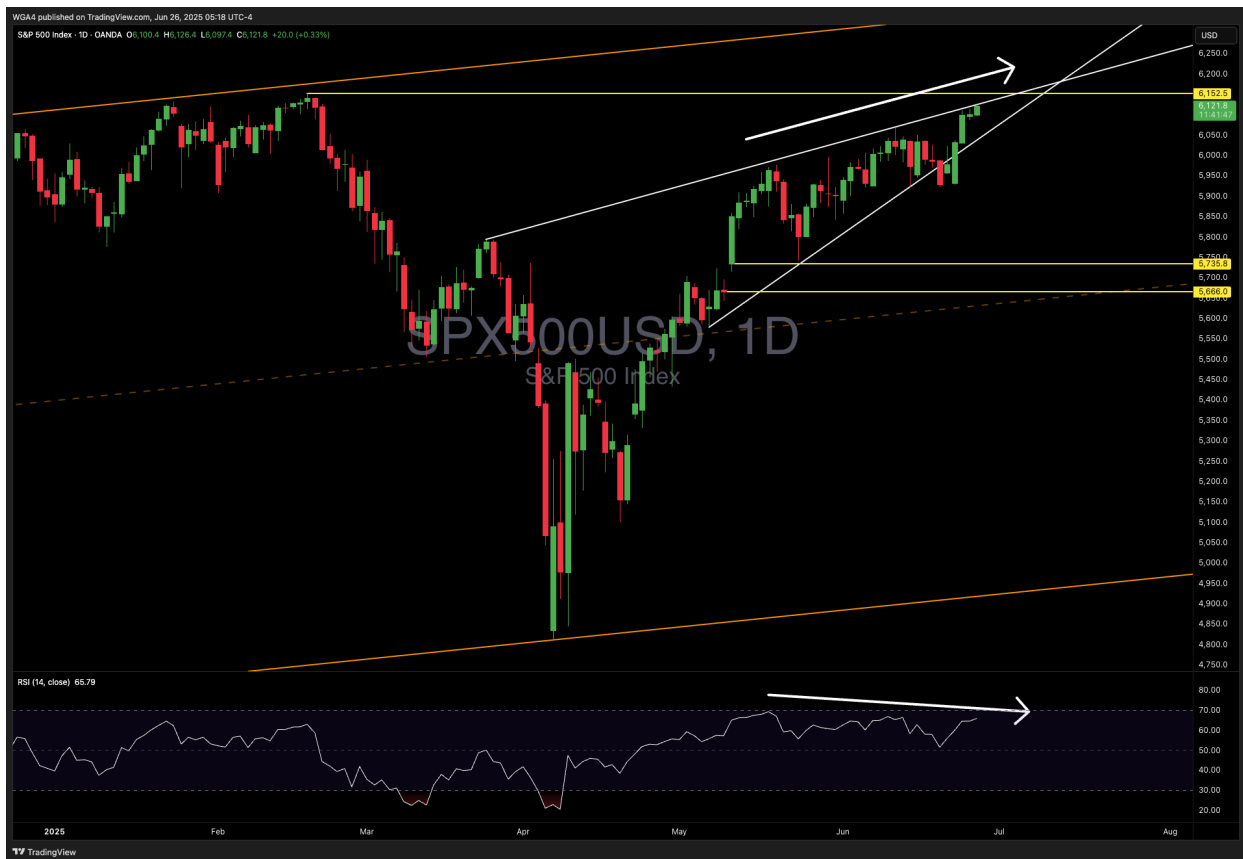
Arader LP is open to subscription from accredited investors and will begin trading on July 1, 2025

[CLICK HERE](#) for an archive of past notes

[CLICK HERE](#) for a summary of investment terms

SPX500 FUTURES

S&P futures are ~0.50% from their all time high, continued bearish divergence in the slow grind higher; short



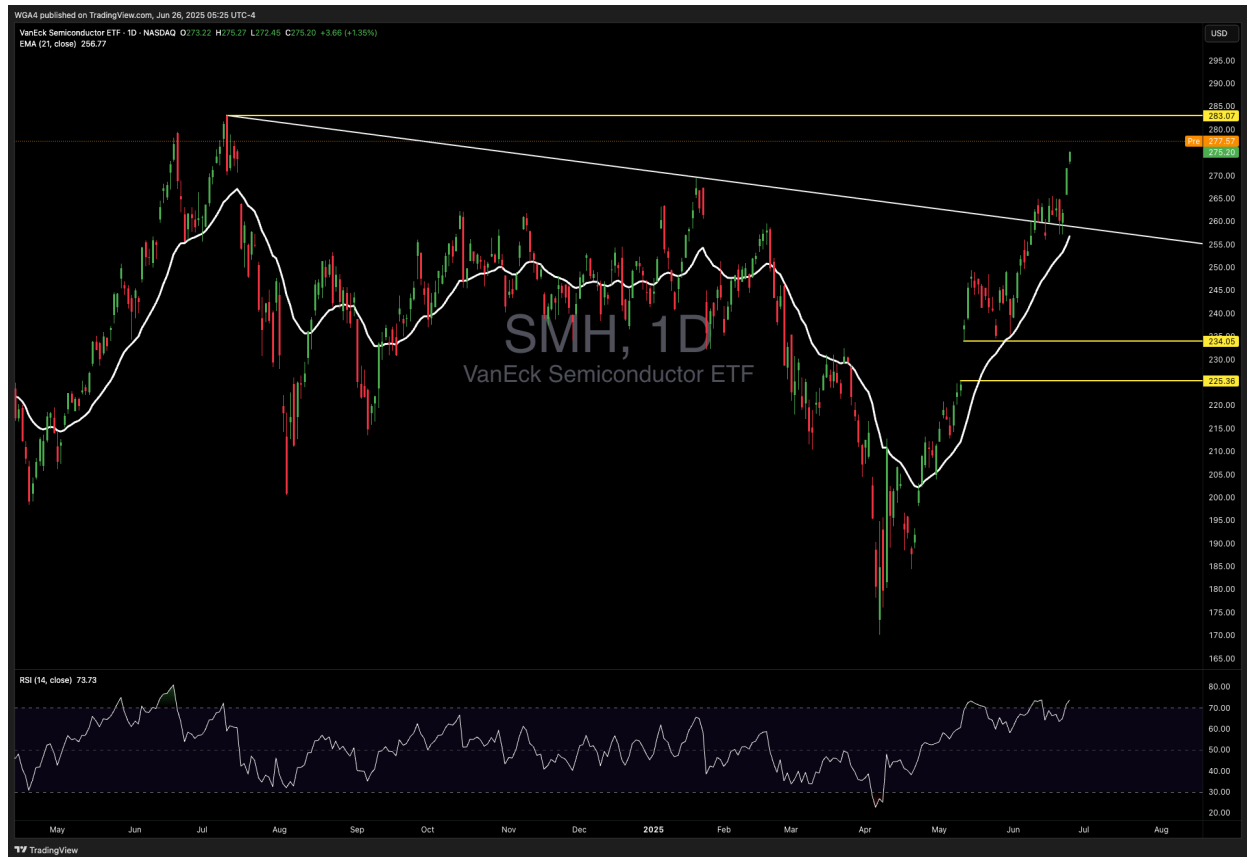
COTTON

The Fabric of Our Lives has bounced nicely from the bottom of the wedge and is now heading toward the down trendline; will cut half the long at the trendline and hold half for a potential breakout



SMH - VANECK SEMICONDUCTOR ETF

The semi basket is ~2% from all time high; 21 EMA below; gap fill below; short



ORCL - ORACLE CORPORATION

Larry Ellison's firm is still hovering below the long term trend line; gap fill still well below; still short from [6/17/25](#)



STRATEGY PERFORMANCE JANUARY 1 - JUNE 20, 2025: 60.13%*

Strategy performance updates will resume July 2, 2025 after the official Arader LP institutional account has been launched

Value | Performance



+60.13%

Total return this year



**Strategy Performance reflects the gross returns (no performance or management fees) of an Interactive Brokers account (ending in 8734), managed solely by Walter Arader from January 1, 2025 to June 20, 2025. Performance data of the Interactive Brokers account reflects actual results with supporting records available upon request. Arader LP, a hedge fund set to begin trading on July 1, 2025, will employ the same investment strategy under the sole management of Walter Arader. Performance of the Interactive Brokers account may differ materially from Arader LP's future results due to factors including, but not limited to management and performance fees, leverage, liquidity, portfolio size, and hedge fund regulations. Arader LP's returns will be net of fees, which will reduce returns compared to the gross performance shown. Past performance does not guarantee future results. The strategy involves significant risks, including the potential loss of principal, due to factors such as but not limited to market volatility, adverse market conditions, leverage, and concentrated investments. This communication is made pursuant to Rule 506(c) of Regulation D. Arader LP is only available to accredited investors and will take reasonable steps to verify investor status prior to accepting investments. Investments in Arader LP are currently being accepted and trading will commence on July 1, 2025.*

DISCLAIMER: This communication is for informational and educational purposes only and does not constitute financial advice, an offer to sell, or a solicitation to buy securities in jurisdictions where such offer or solicitation is unlawful. Although attempts have been made to ensure the accuracy of the information provided, errors or omissions may occur. Consult a financial advisor before making investment decisions. All information is subject to

change.

[CLICK HERE](#) to learn more about the fund

[CLICK HERE](#) for a summary of investment terms

Reply “UNSUBSCRIBE” if you wish to no longer receive these emails