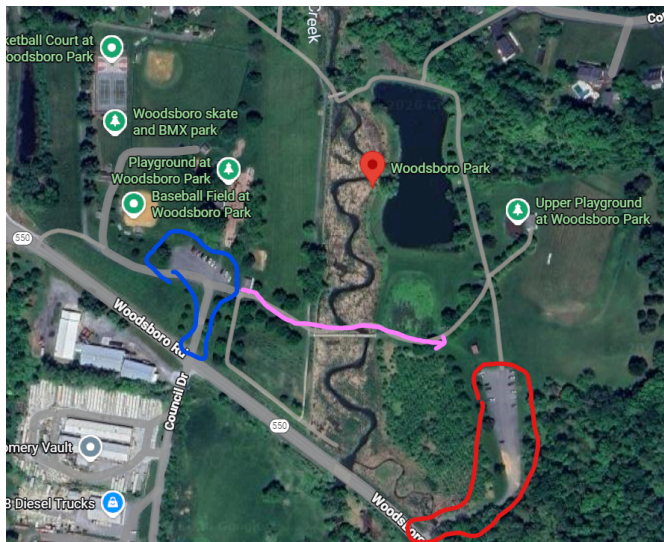


OFFICIAL TOURNAMENT CADDIE GUIDE

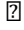
Player information, logistics, and rules
MDGT Kick-Off Celebration AM Day

Event Location & Parking

Course Name	Woodsboro Regional Park
Address / GPS	https://maps.app.goo.gl/DYysFrdfdg18L4z26
Parking Instructions	<p>There are two designated parking areas for this event. The primary parking lot (outlined in red) is located adjacent to Hole 1. An overflow parking lot (outlined in blue) is located across the creek near the temporary holes. Players may park in either lot.</p> <p>If you arrive later in the morning, please plan to use the overflow parking lot and walk across the bridge (pink line) to Tournament Central. Refer to the map below for directions.</p> <p>Do not park in the middle of the parking lot. Parking is permitted only along the sides of the lot near the ropes. If side parking is full, proceed directly to the overflow lot. The center of the lot must remain clear at all times to allow access for emergency vehicles if necessary.</p>



Course Layout

Number of Holes	You play the same layout both rounds, which consists of 22 total holes, 19 of them being normal course holes, 3 being temporary.
Course Map/ Notes	View photo section within Disc Golf Scene or view on UDisc  https://udisc.com/courses/woodsboro-regional-park-w00N/layouts/152133/caddie-book
Other notes	This is a mixed layout and tournament tee signs will be placed on all tee pads in play. Proceed to the tee pad that has a tournament tee-sign. Check the PDGA app if there is any confusion.

Tournament Schedule

Detail	Time
Check in at tournament central	8:15 AM - 9:00 AM
Prior year award ceremony (no practicing on the course at this time)	9:00 AM - 9:15 AM
Player's meeting	9:15 AM - 9:25 AM
Walk to your starting hole and warm up.	9:25 AM - 9:45 AM
Round 1 - shotgun start	9:45 AM - 1:00 PM
Approximate time for lunch. 45-60 minutes after the last card finishes.	1:00 PM - 2:00 PM
Approx. Round 2 - Shotgun Start	2:00 PM - 5:00 PM
Approximate Award Ceremony Time	5:00 PM
Disc Vendor On-site for Script payout and general purchase	5:00 PM

Player Packs

Distribution Time	8:15 AM – 9:00 AM
Distribution Location	Tournament Central
Contents	<p>I highly recommend grabbing your player's pack and bringing it back to your car, as there is a decent amount of content.</p> <ul style="list-style-type: none">• Two TFR Innova discs• MVP R2 eclipse disc• PDGA logo mini• Innova MDGT mini• MDGT Velcro patch

Weather & Conditions

This event will be conducted rain or shine unless conditions become unsafe. Players are responsible for monitoring weather conditions and preparing accordingly. Tournament Central will monitor any potential lightning strikes and tournament delays and communicate such details through the PDGA app.

Scoring – PDGA Live

PDGA Live Event Code	MDGTAMS
Primary Scoring Method	PDGA Live Digital Scoring
Notes	All players are required to keep score and verify score accuracy. If you requested a paper scorecard, please pick one up at tournament central.

Lunch

Wonderbowls will be on site and serves acai bowls, crepes, and smoothies. This is not part of your registration fees, and any purchases made are separate from the event.

<https://www.facebook.com/wonderbowlsfrederickmd/>

CTPs – Closest to the Pin

Each hole will have a CTP for round 1, courtesy of MVP Disc Sports. I have an assortment of MVP Lab Seconds to hand out as prizes. After your final hole, bring the CTP flag to tournament central. CTP prizes will be given at the end of the event—attendance required. Some CTPs are open to all divisions; others are division-specific. Please confirm with your card that you are closer to the pin before moving a previously marked CTP.

All divisions: 1-16, Temp1, Temp2, Temp3

Woman-only divisions: 17, 18, 19

Playoffs

Playoffs are only required for first place. Playoffs will be determined by sudden-death playoff and can only start once the playoff holes are clear and do not interfere with other cards still playing their final round.

PDGA playoff rules: <https://www.pdga.com/rules/competition-manual/109>

Playoff loop: 1, T1, 2, 9 – Repeat

Trophies, Script & On-Site Vendors

Trophies are awarded to athletes who finish in first place within their respective division. The top 40% in each division will receive script based on the number of players within the division. Script will be available after round 2 once final scores are calculated. While processing may take some time, you're welcome to browse the vendor's inventory as you wait. If you do not redeem your script on site, the vendor will contact you within the next couple days with an electronic gift card. After receiving your script, please communicate directly with the vendor; tournament staff are no longer involved. If there are any issues with the vendor you believe we should be aware of, please reach out and provide that feedback.

If you earned script for the 2025 season, you can redeem it onsite with the vendor. If you can't attend, you'll receive an e-gift card to use on their website after they process the on-site vending. If you earned script, you would have received an email from marylanddiscgolftour@gmail.com.

PDGA Overall Rules

All PDGA Official Rules of Disc Golf and the PDGA Competition Manual are in effect. The PDGA Rules App is recommended for reference.

Players are encouraged to review the 2026 PDGA rule updates prior to the event. Key points may be highlighted during the player meeting.

Official rules: <https://www.pdga.com/rules/official-rules-disc-golf>

2026 changes:

<https://www.pdga.com/news/official-rules-disc-golf-and-competition-manual-disc-golf-events-updated-2026>

Course-Specific Rules

Most holes play "normal", but there are a few holes where you should fully understand the rules. See PDGA layout for full course notes.

Hole 4: Contains a hazard area under the tree in the fairway. Any lie fully in the hazard area plays from that lie and receives one penalty stroke.

<https://www.pdga.com/rules/official-rules-disc-golf/80605>

Hole 9: There is a double mandatory between the two trees in front of the basket with a mandatory drop zone for all missed mandos. The mando line will be marked with string on both the left and right trees, extending infinitely in the direction the string points.

<https://www.pdga.com/rules/official-rules-disc-golf/80401>

Hole 10: Plays as a true island for pool A (MA1, MA2, MA40) with a mandatory drop zone with a PDGA waiver. Any throw from the Tee must come to rest on the Island Green to be able to mark on the Island Green. Throws from the Tee that don't come to rest on the Island Green must proceed to the Drop Zone with a penalty throw. All other throws use normal OB rules. Island green is identified with marker flags from the inside of the most outer railroad tie circle. In other words, you must be within the outside layer of mulch on the island. **All other divisions play the hole as normal with no drop zone or island green.**

Hole 11: The green is marked as an island but **does not play as a true island**. Any throw that comes to rest fully outside the marked green is played as a hazard. A lie fully within the hazard area must be played from that lie and carries a one-stroke penalty.

<https://www.pdga.com/rules/official-rules-disc-golf/80605>

Lost Disc Policy

Lost disc rules will be enforced in accordance with PDGA regulations. Players should make reasonable efforts to locate discs and label them clearly. Please do not spend more than the allotted time identified in the PDGA rules. <https://www.pdga.com/rules/official-rules-disc-golf/80503>

Sponsors & Supporters

We appreciate our sponsors and partners for their support. Please consider supporting their businesses when you have the opportunity.

Innova Disc Sports

<https://www.innovadiscs.com/>

Innova has been a big supporter since the formation of the Maryland Disc Golf Tour and has helped us create custom stamp MDGT discs with generous discounts and flexibility to accomplish our mission and expand the brand. When considering between various manufacturers either through disc sales or event support, please consider taking your business to Innova as we have only had fantastic experiences with them.

MVP Disc Sports

<https://mvpdiscsports.com/>

MVP Disc Sports has consistently supported the Maryland Disc Golf Tour since its inception, providing lab seconds that allow us to offer extra prizes like CTP awards. Our collaboration with MVP, much like with Innova, has been excellent. Please consider taking your business to MVP, in addition to Innova. We highly recommend both manufacturers.

BLUECHIP Technologies

<https://www.bluechiptechnologies.net/#/>

Bluechip Technologies is a small, specialized software and professional services firm in the Washington, DC metro area that provides high-end IT solutions—particularly in machine learning, big data, analytics, and custom software engineering—for U.S. federal government clients, especially within the intelligence, defense, and homeland security communities.

Play It Again Sports, Frederick, Maryland

<https://playitagainsports.com/locations/frederick-md/>

5811 Buckeystown Pike

Frederick, MD 21704

PIAG Sports was our first event sponsor. For buying or selling discs locally, visit PIAG in Frederick, Maryland.

Disc Golf Advancement Foundation, West Virginia

<https://www.facebook.com/profile.php?id=61573580016185>

The DGA Foundation is a 501(c)(3) Non-profit org. Their mission is to advance disc golf in our community by hosting events and refining/building local disc golf courses through the effort of volunteers & donations, with a commitment to charitable giving.

Epic Painting Company

<https://epicpaintingco.com/>

Epic Painting Company delivers high-quality painting and flooring services for commercial, institutional, and multi-family residential clients. Their experienced teams focus on customer satisfaction and attention to detail, offering both interior and exterior painting, custom graphics, and free estimates.

Ryan Hutton is the president of Epic Painting Company and sponsors local events. When you see him out playing, make sure to thank him for his support, or even better, next time you need painting services, reach out for an estimate!

Rugged & Rustic Creations

<https://www.ruggedrustic.com/>

<https://www.facebook.com/RuggedRustic/>

Mike Tomlin creates rustic, unique and personalized gifts and artwork. Mike created the 2025 series division championship trophies. If you are in need of custom trophies or other artwork, please reach out to Mike.

TechDisc

<https://shop.techdisc.com/>

TechDisc is a disc-tracking and analytics tool that measures how you actually throw a disc—capturing release speed, spin, nose angle, hyzer angle, and more with high precision. Players use it to understand their form, diagnose inconsistencies, and track improvement over time. It's one of the most advanced ways to get real, data-driven feedback on your throwing mechanics.

UDisc

<https://udisc.com/>

UDisc is the leading app for navigating disc golf courses, keeping score, and tracking your performance with accurate, real-time stats. Players rely on it for course maps, live scoring, round history, and league or event integration, making it an essential tool for both casual rounds and competitive play.

OTB East

OTB East is our onsite vendor the AM kick-off day (3/28). The tournament layout also utilizes the RPM Helix 2 -WG Heavy Duty Portable Disc Golf Basket, which can be purchased from OTB East with the following link -> <https://otbeast.com/product/helix-2-portable-basket/>

Central PA Disc Golf

<https://centralpadiscgolf.com/>

Central PA Disc Golf is our onsite vendor for the Daylight Savings event (3/8).

Justin Lago

<https://justinlago.wixsite.com/discgolfportfolio>

justin.lago@gmail.com

Justin is a Virginia-based artist and illustrator who supports the disc golf community through hot stamp art, player logo design, course tee signs, and tournament support.

Tee-Sign Sponsors

Kyle Joyce, Power Fitness (two tee sign sponsorships)

Matthew Frawkley, Frawley Law LLC (hole 6)

Matt Clever

Ed Foxwell

Disc Golf Advancement Foundation, WV

Thomas DeSantis

Caroline McKay

Christopher Bellefeuille (Loco Disc Golf)

Fun & Funky Tags

Fredrock Disc Golf Club

The Fredrock Disc Golf Club maintains local courses, hosts events, and supports community outreach throughout Frederick. Membership directly funds course improvements and the continued growth of disc golf in the area. If you'd like to support the efforts, please feel free to explore the club member disc golf scene page →

https://www.discgolfscene.com/tournament/2025_Fredrock_Disc_Golf_Club_Membership_2026

Tournament Contact Information

Tournament Directors	Phil Mills & Rob Stark
Phone	240-415-8534 (Google Voice #)
Email	marylanddiscgolftour@gmail.com

Facilities

Bathrooms	Two portable bathrooms will be on-site.
Drinking Water	Bottled water available on-site.

Important Reminders

Check your assigned starting hole the morning of the event, as starting holes may change due to drops or pool adjustments.

Pack-In / Pack-Out Policy

This is a pack-in, pack-out disc golf course. There are a limited number of trash cans on the property. Please do not litter or damage park property at any time.

TechDisc Station

We will have a TechDisc station set up during lunch. The fastest backhand speed and fastest forehand speed will receive a year of premium udisc.

We are also giving away a TechDisc. To win it, all you have to do is come up and throw. Anyone who comes up and throws will get their name into a drawing, and we will pick the winner during the award ceremony. Really, no reason not to give it a swing!

Event Links

Disc Golf Scene Series: To see other Maryland Disc Golf Events, please visit

<https://www.discgolfscene.com/series/37401/maryland-disc-golf-tour-mdgt-2026>

Facebook Page: <https://www.facebook.com/profile.php?id=61574676654727>

Layout

Hole	Tee Color	Course Tee #	Basket Color	Course Basket #	Par	Distance	Notes
1	Blue	1	Yellow	1	3	270	Parking lot, walking path and beyond, and pavilion, OB.
TEMP1	Concrete	N/A	Black	N/A	3	300	Located in the pavilion to the left of Hole 1's fairway. Tee from the left corner, as marked by flags, of the concrete pavilion up to the trees before Hole 2's green tee pad. OB marked on right of the fairway on the hill (PDGA 806.02).
2	Green	2	Yellow	2	4	462	OB, as marked, short right, which is the same as previous hole (PDGA 806.02).
3	Blue	3	Yellow	3	3	209	
4	Red	4	Yellow (b)	4	3	296	Hazard Area (as marked) is located beneath the large fairway tree. A disc that comes to rest fully within the marked hazard must be played from that lie and carries a one-throw penalty (PDGA 806.05).
5	Blue	5	Yellow (right)	5	4	298	
6	Blue	6	White	6	3	265	
7	Blue	7	Yellow (a)	7	3	200	
8	Red	8	Yellow	8	3	197	If your disc goes past the basket, be mindful of players on hole 9.
9	Red	9	White (middle)	9	3	270	This hole features a double mandatory between the two trees in front of White's basket. The mandatory begins at the face of each marked tree, and the restricted plane extends infinitely along the indicated lines, both vertically and horizontally. Any throw that breaks the restricted plane must proceed to the marked drop zone located short of the mando. Subsequent missed mandatorials also proceed to the drop zone (PDGA 804.01).
10	Red	10	Yellow	10	3	250	For Pool A (MA1/MA2/MA40), plays as true Island hole. Tee pad extends one foot left of the turf teepad, as marked. Island Green: Any throw from the Tee must come to rest on the Island Green to be able to mark on the Island Green. Throws from the Tee that don't come to rest on the Island Green must proceed to the Drop Zone with a penalty throw. Drop zone marked with pink flags short left of island. All other throws use normal OB rules. Island green is defined by the inside of the outside ring. Essentially, your disc must lie within the outside layer of mulch. PDGA waiver obtained. All other divisions play the hole as normal with no island or drop zone.
11	Red	11	Yellow	11	3	145	Any throw that comes to rest fully OUTSIDE the marked green is played as a hazard. The lie is played from where the disc rests, and one penalty throw is added (PDGA 806.05).
12	Red	12	Yellow (b)	12	3	230	
13	Red	13	White	13	3	215	
14	Red	14	White	14	3	256	
15	Blue	15	Yellow	15	3	215	
16	Blue	16	Yellow (b)	16	3	310	
17	Red	17	Yellow	17	3	170	

18	Blue	18	White	18	3	245	
19	Temp (50 feet in front of blue)	19	Practice Basket	Practice Basket	3	200	Tee pad is located behind the Lost and Found shed. The walking path and all areas beyond it are out-of-bounds (PDGA 806.02). Mandatory left of the stage, with the restricted plane extending indefinitely across the face of the wall, both vertically and horizontally. Any throw that breaks the restricted plane must proceed to the designated drop zone, including all subsequent misses (PDGA 804.01). Once finished, walk across the bridge behind hole 19's red tee pad.
TEMP2	TEMP (flagged)	N/A	Black	N/A	4	570	The tee pad is marked with flags and a sign. The playground (defined by the inside edge of the black border), the baseball fields (defined by the fence), and the walking path and beyond are out-of-bounds (PDGA 806.02).
TEMP3	TEMP (flagged)	N/A	Black	N/A	3	245	The tee pad is marked with flags and a sign. OB is marked by the string line on the left and behind the basket. The walking path on the right, and all areas across it to the right, are out-of-bounds. The walking path directly in front of the tee pad is not OB (PDGA 806.02). After completing the hole, proceed to Hole 1.
				Total:	69	5881	

Layout walkthrough:

<https://www.youtube.com/watch?v=DUCWL9v9K0A>