

**Emergency Personnel:** A certified athletic trainer(AT) will be on site for home events and select practices according to the pre approved contract between Kettering Health Sports Medicine and the Miamisburg Athletic Department. A team physician may also be present at home events. If neither is available, the emergency personnel will include: coaches, other staff members, and students present that maintain certification in CPR/First Aid or other emergency certifications. In an emergency situation, care should be provided by the most qualified individual on the scene. Individuals with lower credentials should yield to those with more appropriate training. This should be determined in advance of each training session.

**Role of the Athletic Trainer:** AT will assess the athlete/student and evaluate whether EMS is to be activated. The AT will make the 911 call or assign someone to call. The AT will provide treatment necessary to each individual situation.

**Roles of First Responders when AT is not present:** The first and most important role of the first responder is immediate care of the athlete. The emergency personnel will evaluate the injured athlete/ student and determine if EMS needs to be called.

- If needed the emergency personnel in charge will call or assign someone to activate EMS
- The emergency personnel in charge will stay with the athlete/student or assign another first responder to stay with the athlete, meanwhile providing care and treatment per First Aid/ CPR protocol.
- Once the athlete/student is stable, the emergency personnel in charge will contact the athlete/student's parent(s) or guardians or assign someone to the task, informing them of the situation at hand.
- If necessary, the administrator at the game will wait for the squad at the entry points listed on the following pages. If not available, the emergency personnel in charge will assign another first responder or a responsible student to this task. This person is in charge of directing the squad to the injured athlete/ student.
- The emergency personnel in charge will give the paramedics/ EMT's a report on the athlete/student including but not limited to their demographics, history, mechanism of injury, and care given up to that point.

**Emergency Phone Numbers:**

- EMS 911
- Miamisburg Police and Fire (937) 866-3344

**Local Emergency Department:**

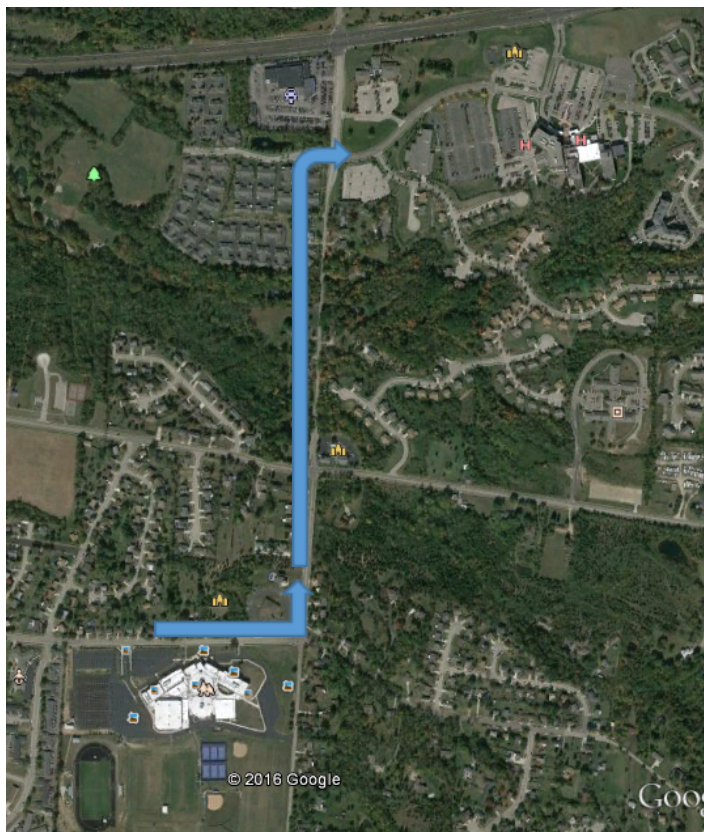
**Kettering Health Miamisburg**

**4000 Miamisburg- Centerville Rd**

**Miamisburg, OH 45342**

**(937)384-6780**

- Directions from MHS
  - o Turn Right onto Belvo Rd heading East 0.2mi
  - o Turn left on S Gebhart Church Rd 0.8mi
  - o Turn right on to OH 725 E 0.2mi
  - o Arrive at destination



**Miamisburg Athletic Department Contacts:**

**Team Physician:**

Molly Tatum, MD

(937)298-4417 Orthopedic Institute of Dayton

(937)395-3920 Kettering Health Sports Medicine

(513)253-6157 cell

**Athletic Trainers:**

Laura Stafford, AT

(937)395-3928 Kettering Health Sports Medicine

(937)866-0771 ext 1019 AT Room

(937)271-6008 cell

Kesley Eddy, AT

(419)290-7096 cell

(937)866-0771 ext 1019 AT Room

**Athletic Directors:**

Jason Osborne- retiring 12/31/25

(937)866-0771 ext 1014 Office

(937) 902-3554 cell

Jason Shade

(937)866-0771 ext 1014 Office

(937)865-0011 Ext. 2022/2024 Office

(937) 673-2144 cell

Zach Myers

(937)866-0771 ext 1014 Office

(937)865-0011 Ext. 2022/2024 Office

(937)430-7119 cell

**Emergency Communications:**

Land lines are located in the Athletic Training Room and Athletic Department offices. Each on-site athletic trainer will have a cellular phone available to call EMS if needed. It is also expected that at least one coach will have a cellular phone on their person at all times.

**Emergency Equipment:**

- High School AED's are located mounted on the wall outside of the athletic training room, on the east and west walls of both concession stands at Holland Field, and mounted outside of the athletic director's office.
- Middle School AED's are located in the band hallway, in the gymnasium, main office (nurse's office), and in the shed by the practice fields.
- Harmon Field has an AED located in the concession stand on the north side of the field.
- Ice is located in the athletic training room, down the hall from the athletic training room, in the indoor and outdoor concession stands at the high school, in the concession stands at Harmon Field, and outside of the athletic director's office at the middle school.
- Medical Kits will be provided for teams by the athletic training room, kept and maintained by the coaches or person assigned to said task via the head coach.
- Emergency Medical Authorization Forms are kept with the coaches. Copies may be obtained from the athletic office and they are always available for viewing and printing on Final Forms.

**EMS Entry Points:**

- *Miamisburg High School*- EMS may enter from the diagrammed areas provided on the school maps (See Maps 1-2), depending on the location of the injured athlete. EMS will also be present at all home varsity football games.
- *Miamisburg Middle School*- EMS may enter from the diagrammed areas provided on the school maps (See Maps 3-4), depending on the location of the injured athlete.
- *Harmon Field*- EMS may enter from the diagrammed areas provided on the school maps (See Map 5), depending on the location of the injured athlete.

**Miamisburg High School: Map #1**

1860 Belvo Rd

Miamisburg, OH 45342



**1) Soccer Stadium**

**2) Practice Fields**

**3) Auxiliary Gymnasium**

**4) High School Gymnasium**

**5) Football Stadium**

**6) Tennis Courts**

**7) Varsity Softball Field**

**8) JV Softball Field**

**9) JV Baseball Field**

**10) Varsity Baseball Field**

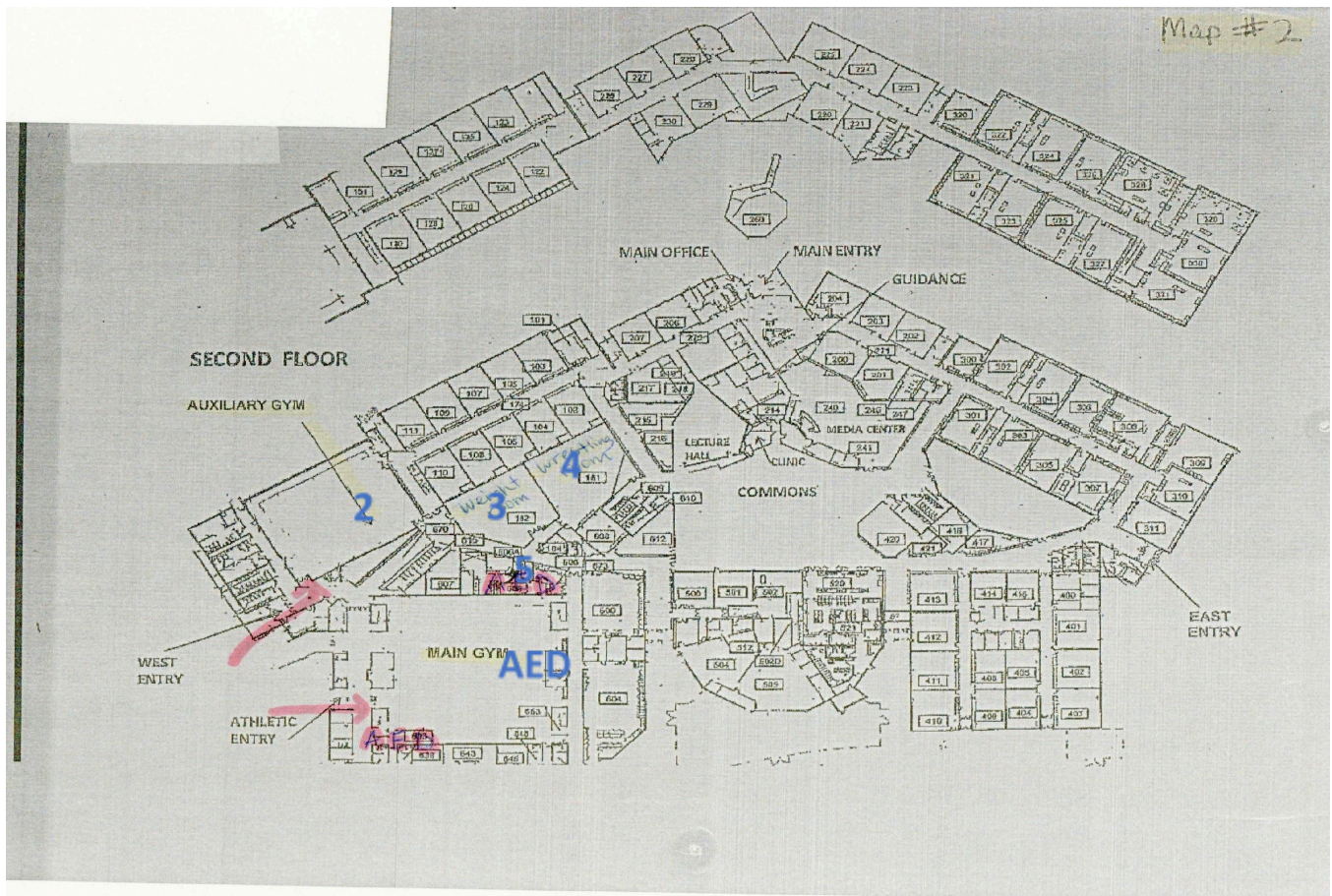


# Miamisburg School District | 2025 Emergency Action Plan

## Miamisburg High School: Map #2

1860 Belvo Rd

Miamisburg, OH 45342

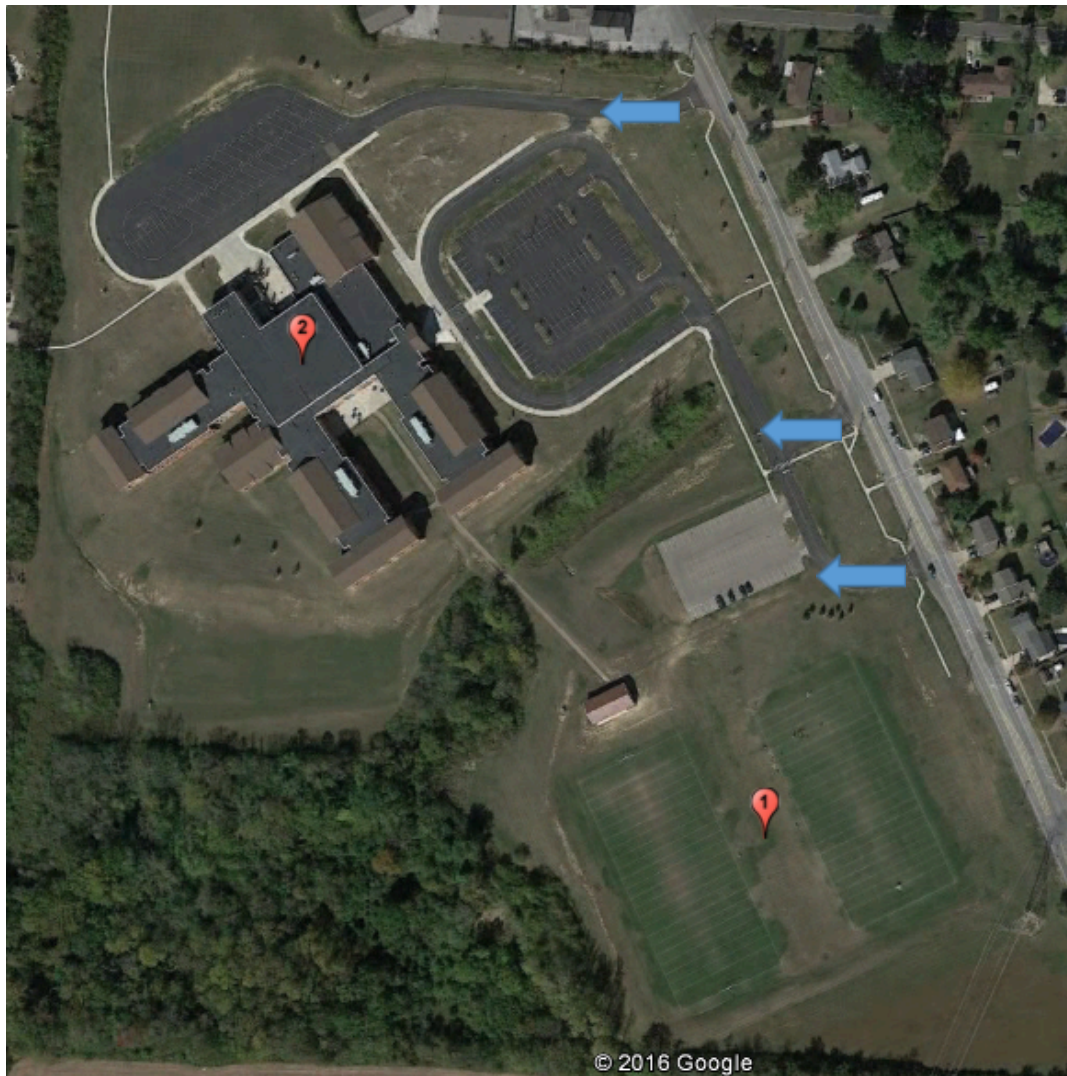


- 1) Main Gym
- 2) Auxiliary Gym
- 3) Weight Room
- 4) Wrestling Room
- 5) Athletic Training Room

**Miamisburg Middle School- Map #3**

**8668 Miamisburg Springboro Pike**

**Miamisburg, OH 45342**



**1) Practice Fields**

**2) Middle School Gymnasium**



# Miamisburg School District 2025 Emergency Action Plan

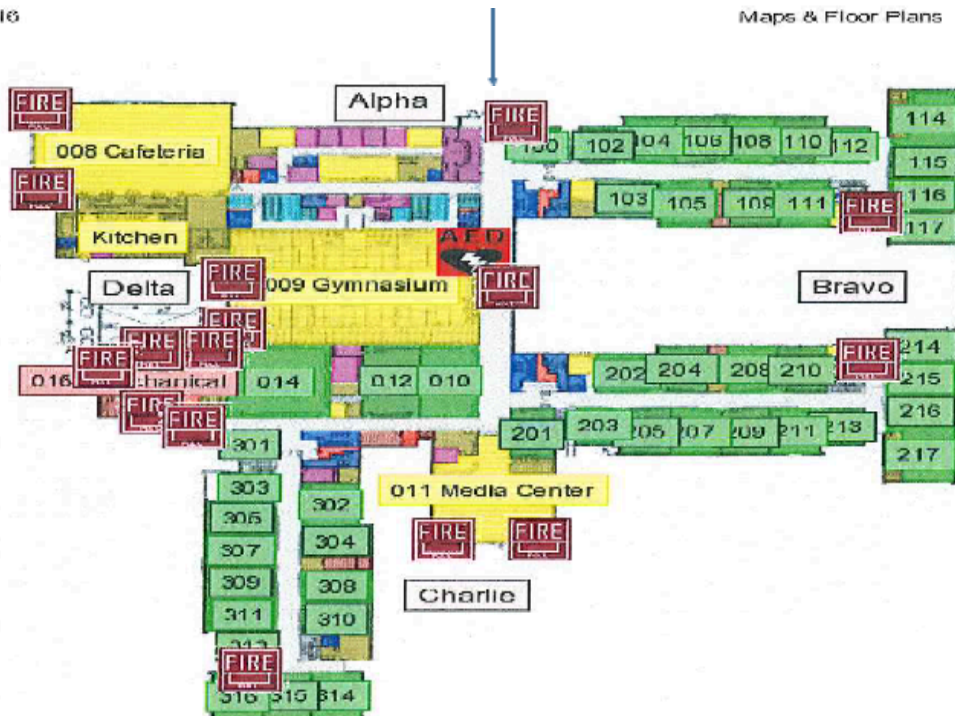
## Miamisburg Middle School: Map #4

8668 Miamisburg Springboro Pike

Miamisburg, OH 45342

8/5/2016

Maps & Floor Plans



## 009) Gymnasium



# Miamisburg School District | 2025 Emergency Action Plan

Harmon Field: Map #5

727 Jefferson St

Miamisburg, OH 45342



1) Concessions

4) Home Sideline

2) Home Locker Room

5) Visitor Sideline

3) Visitor Locker Room