

Native Minds

Native Minds is an artist talk which will take place at Māoriland on 7 March at 2pm.

The talk is 1 hour long with no interval.

Māoriland is located at 68 Main Street, Ōtaki.

At a Glance – This Show has:

- Wheelchair Accessible Venue
- No NZSL
- No Audio Description or Touch Tour
- No Relaxed Performance
- Mostly Auditory Experience – Lots of Talking
- Limited Content Notes Available



Included in this document

This document includes information about ticketing, the venue, accessible performances, and the show. You can use the links below to jump straight to the information you need or scroll down to read through everything.

[How to Get Tickets](#)

- [Companion Tickets](#)

[About Māoriland](#)

[Getting to Māoriland](#)

- [Parking](#)
- [Public Transport](#)
- [Taxis and Drop Off Points](#)

[Accessibility](#)

[Inside Māoriland](#)

- [Bar and Garden](#)
- [Bathrooms](#)
- [Seating](#)

[Notes for Blind or Low Vision Audience Members](#)

[About The Show](#)

- [Show Blurb](#)
- [What to Expect As An Audience Member](#)

[Content Notes](#)

How to Get Tickets

Tickets for Native Minds cost \$10.

Tickets can be purchased online on the [iTicket website](#) or by emailing support@iticket.co.nz or calling +64 (9) 361-1000 or 0508 iTICKET (0508 484 253).

Companion Tickets

If you need someone to come with you to support you to attend the show, we may be able to provide you with a companion ticket. This might be a friend, family member, partner, support worker or someone else who would help make it easier for you to attend the show.

Companion tickets are limited and subject to availability for some events. For more information or to book a companion ticket, contact us by emailing **access@festival.nz** or calling **04 830 7854**.

Keep scrolling for the next section or [click to return to the menu](#).

About Māoriland

Māoriland is located at 68 Main Street, Ōtaki. Here are some photos of what it looks like from outside.



Getting to Māoriland

Parking

There is on-street parking available on Main Street, including two mobility parks. These are located just past the zebra crossing.

The first is an angle park on the same side of the road as Māoriland.



The second is a kerb-side parking bay on the other side of the road, directly opposite the angle-park. This park is outside Te Puna Oranga o Ōtaki at 51 Main Street.



There are also some more parking spaces, including mobility spaces, around the back of Māoriland.

Public Transport

The closest bus stop to Māoriland is just over 100 metres away on Aotaki Street, outside the Ōtaki Library. Some bus routes stopping here connect with the Waikanae train station, which may be helpful if travelling from outside of Ōtaki to see the show.

The [Metlink website](#) can be used to plan your journey and find the best route to and from your location.

Taxis and Drop Off Points

There is no taxi stand nor dedicated drop off point near Māoriland, but taxis and shuttles can be called to pick up from nearby. On-street parking spaces may provide convenient close drop-off points for taxis, Ubers and other cars.

Keep scrolling for the next section or [click to return to the menu](#).

Accessibility

Māoriland has flat access to the building and theatre inside.

There is a unisex accessible bathroom available, with L-shaped grab rails, space to turn around, and a sink inside the stall.

Most of the seating consists of moveable chairs on a flat floor, with a few raised seats accessed via stairs at the back. Spaces can be reserved for wheelchair users. Please contact us by emailing **access@festival.nz** or calling **04 830 7854** to reserve one of these spaces.

Keep scrolling for the next section or [click to return to the menu](#).

Inside Māoriland

Māoriland has one public entrance on Main Street.



Entrance is via glass double doors, which open outwards.



There is a small lip on the threshold.



Inside the main door is the Māoriland gallery. This photo was taken from just inside the door. There will be staff here in the gallery to check your tickets and help show you where to go.



To reach the theatre, walk straight through the gallery. The entrance to the theatre will most likely be through the green and purple archway directly opposite the main entrance.



Sometimes for events, an alternative entrance may be used. This is located to the right of the green and purple archway. This alternative entrance would be located where the map is in the photo below.



This photo was taken just inside the green and purple archway and shows the theatre without any chairs in it.

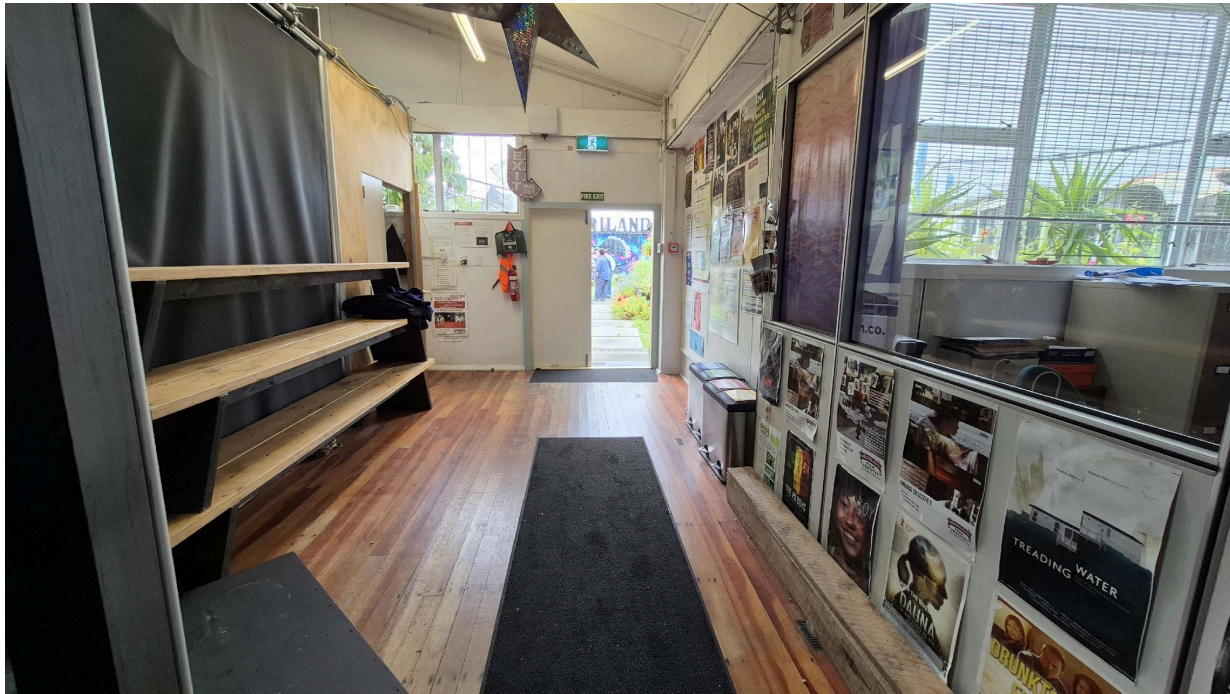


Bar and Garden

To the right of the theatre there is a bar, where you can buy drinks and snacks, or wait for the show to start.



There is also an outdoor garden space with some seating, which might be a quieter space to wait if the bar is very busy. The garden is accessed via a door to the right of the stage.



There is a small lip on the threshold.



The ground in the garden is uneven in places with different types of tiles and ground coverings.



An announcement will be made when it is time to go into the theatre.

Bathrooms

The bathrooms are located off the bar. When standing facing the bar, the bathroom door will be past the staircase, in the small alcove in the far back right corner.



There are two unisex bathroom stalls, each with their own sink.



The accessible stall is straight ahead when you enter the bathroom.

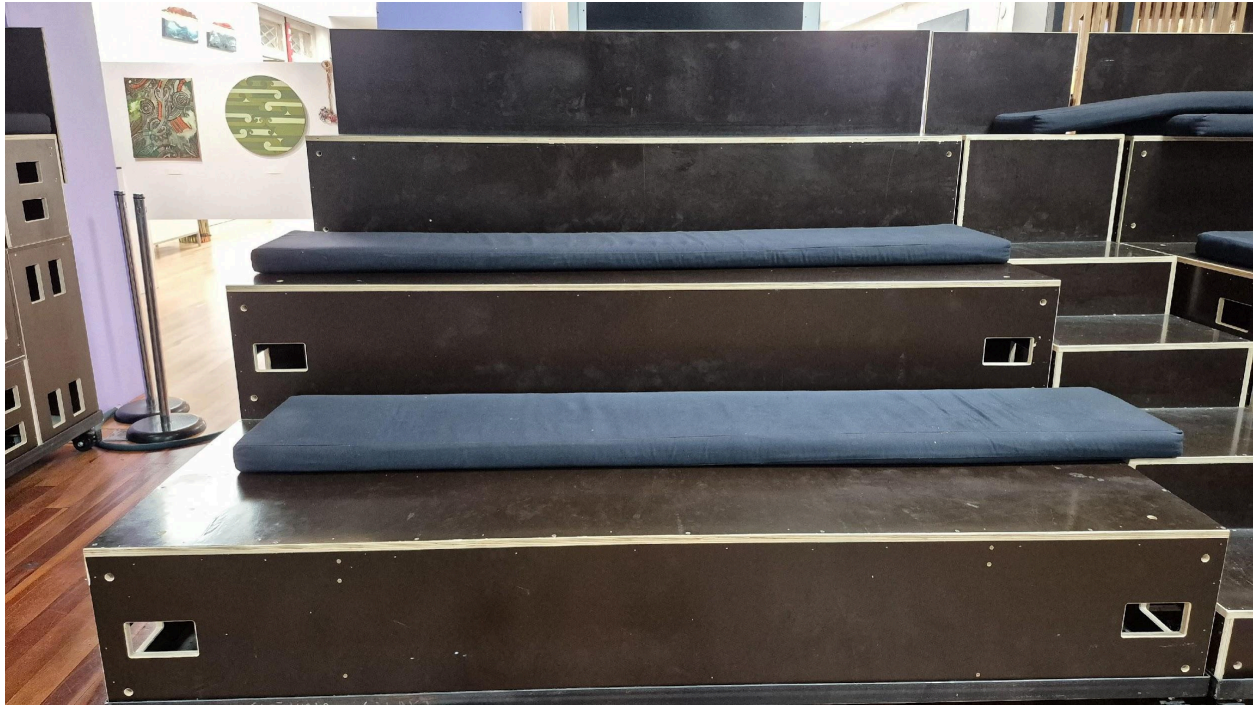


Seating

Most of the seats for this show are single chairs without arms, like the ones in the pictures below.



At the back, there will be some tiered bench seats, which are accessed via stairs.



Seating is via general admission, which means audience members can choose where to sit rather than having a particular seat assigned to them.

If being in a particular place in the theatre would make it easier for you to attend, such as close to an aisle, near an exit, or near the front, please contact us by emailing access@festival.nz or calling **04 830 7854** and we may be able to reserve a seat for you.

There are dedicated spaces available for wheelchair users. Please contact us by emailing access@festival.nz or calling **04 830 7854** to reserve one of these spaces.

Keep scrolling for the next section or [click to return to the menu](#).

Notes for Blind and Low Vision Audience Members

This show is mostly auditory, and we believe it may be accessible to blind and low vision audience members without audio description.

We don't have detailed notes about the set up, but we believe it will be simple with no elaborate set or props. The focus will be on the conversation between Khalid Abdalla and Tainui Stephens.

If you would like more information, please email access@festival.nz or call Sameena on 04 830 7854.

Keep scrolling for the next section or [click to return to the menu](#).

Spoiler Alert!

The next sections of this document give more information about the show, what to expect as an audience member, and some content notes. We've tried to avoid spoilers, but if you want everything to be a surprise, you can skip these sections.

Keep scrolling for the next section or [click to return to the menu](#).

About The Show



Show Blurb

Internationally acclaimed actor and activist Khalid Abdalla (The Day of the Jackal, The Crown, The Kite Runner) comes to Māoriland to take part in the much-celebrated talk series, NATIVE MINDS which creates space for deep dialogue on pressing social and cultural issues. In conversation with Tainui Stephens, Abdalla will explore the power of art and theatre in film, story sovereignty and representation, colonisation, and personal

responsibility, social, economic, and cultural opportunities for diverse voices in the arts and more.

Abdalla will also be performing his intricate and playful solo show [Nowhere](#) at the Tāwhiri Warehouse from 4-7 March.

What to expect as an audience member

This artist talk is being presented in a theatre style, which means that Khalid Abdalla and Tainui Stephens will be on the stage, and the audience will remain seated for the duration of the show. There will be lights on the stage, but the seating area might be dark during the talk.

There is no audience participation during the talk; you are free to just listen. There might be an opportunity for audience members to ask questions at the end of the talk. Please wait until the facilitator says that it's time for questions before asking. You don't have to ask a question if you don't want to.

We ask that audience members don't try to talk to or touch the performers, and that you keep your voice low if talking to people around you so that other audience members can hear the show.

If you need to leave during the performance, please move carefully but promptly to the aisle to avoid blocking other people's view. When you're ready to come back in, a staff member will help you return to your seat at an appropriate time.

Please feel free to approach staff members at any time if you need help.

At the end of the show, there may be bows from the performers as the audience claps. You are welcome to stay and chat or have a drink in the bar or foyer after the show.

Keep scrolling for the next section or [click to return to the menu](#).

Content Notes

This will be a live unscripted talk. As such, we cannot guarantee any of the content or themes that will be discussed. Please see the [show blurb](#) for an indication of themes that are likely to be covered.

If any of this content is distressing to you, you're welcome to close your eyes, cover your ears, or leave the theatre at any time. There is a place in the foyer for you, and we can bring you back in when you're ready.