

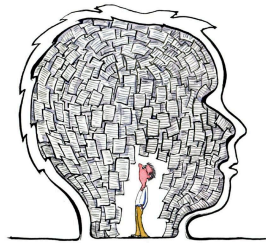
Name:

Hour:

Due Date:

A PICTURE'S WORTH A THOUSAND WORDS...

GETTING TO KNOW YOU PPT



Directions: Using a combination of personal and “found” photographs, share the following aspects of your life and personality in a Google Slides Presentation. Include a well-written **claim sentence** for each photograph that explains **why** you chose it.

- ☐ Family and/or friends
- ☐ Choose 2 of the following favorites:
 - ☐ Book
 - ☐ Hobby
 - ☐ Movie
 - ☐ TV show
- ☐ Selfie that shows an aspect of your personality
- ☐ Favorite school-related class or activity
- ☐ Excitement and/or concern about high school
- ☐ Inspiration and/or role model

Once completed, turn your presentation in on Schoology.

You will be briefly presenting your work. This will count as your first claim assessment.

W9.1a: Claim

Learning Targets	0-Missing	1- Beginning	2- Developing	3- Proficient	4- Advanced
W 9.1a, LT1c: I can write a precise claim by taking a clear, defensible position.	No claim	Inaccurate or unrelated or unclear claim OR Claim is simply a fact (Not arguable).	Independently states an arguable position on a topic which may be a little unclear OR With scaffolding, states an arguable, clear, and absolute position on a topic	Independently states an arguable, clear, and absolute position on a topic	Independently states an arguable, clear, and nuanced position on a topic

Name:

Hour:

Due Date:

W 9.1a, LT1d: I can write a precise claim with 3 strong, reinforcing rationales	Missing all rationales for taking that position	Very unclear (rationales are placed in a separate sentence)	Independently missing 1 or more rationales for taking that position or rationales given are weak OR With scaffolding, gives 3 strong, reinforcing rationales for taking that position	Independently gives 3 strong, reinforcing rationales for taking that position	Independently gives 3 strong reinforcing rationales for taking that position AND rationales are presented in a strategic, effective order AND rationales are varied and anticipate audience's needs
--	--	--	---	---	--