

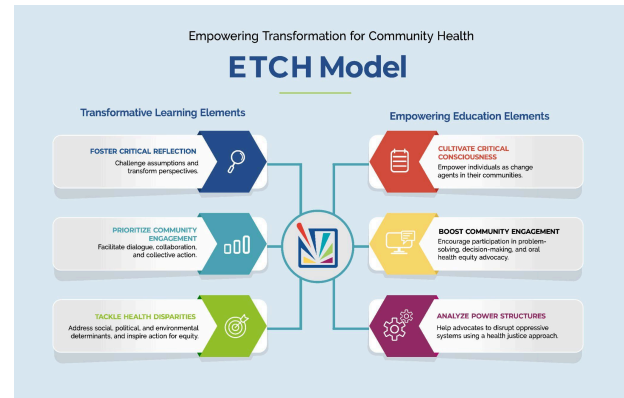
Welcome to the Nonprofit Management in Public Health Certificate Application Guide

| | |
|---|----------|
| What is the AIDPH Nonprofit Management in Public Health Certificate Program? | 2 |
| How will Nonprofit Management Stimulate Your Personal & Professional Growth? | 3 |
| Core Curriculum for Nonprofit Management | 4 |
| Nonprofit Management Certificate Elements | 5 |
| The Application and Selection Process | 6 |
| Nonprofit Management Program FAQs | 7 |
| • What should I expect from my NMPHC Program experience? | 7 |
| • Who is a good fit for this program? | 7 |
| • How much does the program cost? | 7 |
| • How is the program delivered? | 7 |
| • What should I expect when I complete the program? | 7 |
| Expectations of Participants | 8 |



What is the AIDPH Nonprofit Management in Public Health Certificate Program?

The American Institute of Dental Public Health is excited to open applications for the inaugural cohort of the **Nonprofit Management in Public Health Certificate** is a 6-month program designed to strengthen and expand the capacity of public health professionals working in, or aspiring to work in, the nonprofit sector. This certificate program is uniquely focused on equipping participants with the knowledge and skills necessary to lead, sustain, and grow public health nonprofits, with a particular emphasis on community engagement and public health leadership competencies. The NMPHC program is open to any public health professional, regardless of career stage or prior nonprofit experience, and is structured to accommodate working professionals with a time commitment of approximately 3–5 hours per month. The NMPHC curriculum was designed using AIDPH's Empowering Transformation for Community Health (ETCH) Framework to ensure attention to adult learning principles and a health-justice mindset. This approach enables our education and leadership programming to foster both personal and professional growth, aligning with AIDPH's mission of empowering communities and advocating for justice in public health.



Key features of the ETCH Model include:

- **Transformative Learning:** AIDPH supports participants to critically reflect, challenge assumptions, and transform perspectives, all while addressing the social, structural, and environmental determinants of health.
- **Empowering Education:** Participants engage in critical consciousness, enabling them to become agents of change and disrupt systems through a mindful approach.

NMPHC is a certificate program offered through the **AIDPH Academy**. The AIDPH Academy is the hub of educational programming for AIDPH, serving as a dynamic platform for public health professionals seeking to enhance their knowledge and leadership skills in oral health. The Academy offers a spectrum of educational experiences ranging from webinars and workshops to comprehensive certificate programs and fellowships. By offering varied intensities and modalities of learning, the AIDPH Academy ensures that participants find the education and leadership training that best fits their needs, embodying our commitment to empowering transformation in community health.

After graduating from the NMPHC program, attendees will be inducted into the AIDPH Academy and receive ongoing, exclusive professional development opportunities..

How will Nonprofit Management Stimulate Your Personal & Professional Growth?

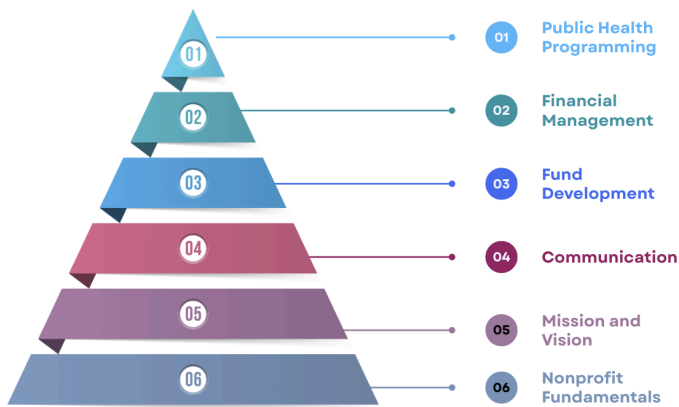
It is AIDPH's goal to create an experience that delivers measurable benefits to both participants and their affiliated organizations. The Nonprofit Management in Public Health Certificate is designed to equip public health professionals with the skills and confidence to step into nonprofit leadership. By strengthening participants' nonprofit management expertise, NMPHC helps cultivate the next generation of leaders who will sustain and grow the public health nonprofit sector. Here's how NMPHC will catalyze your personal and professional growth:



- **Master Nonprofit Leadership Domains:** Gain a strong foundation in the essential areas of nonprofit leadership, including governance, financial stewardship, fund development, and program design, tailored to the new realities of public health.
- **Practical Application of Learning:** Apply course concepts to a real-world deliverable, such as a nonprofit business plan or transformation project, demonstrating your ability to translate management principles into actionable strategies.
- **Career Trajectory Clarity:** Strengthen your professional portfolio and CV with a recognized certificate and tangible project outcomes, positioning yourself for advancement into nonprofit leadership roles.
- **Exclusive Access to Nonprofit Leaders:** Connect with faculty and guest speakers who bring firsthand expertise from public health nonprofits, broadening your perspective on leadership pathways.
- **Continuing Education Credits:** Earn ADA CERP CEUs, which can be used for Certified in Public Health (CPH) recertification, ensuring your learning supports both career advancement and credentialing requirements.
- **Alumni Community Involvement:** Upon completion, you will be welcomed into the AIDPH Academy's alumni community, providing you with ongoing access to professional development resources, networking opportunities, and leadership opportunities.

NMPHC is a transformative experience that nurtures your growth, equips you with practical tools, and prepares you to lead with vision and impact in the nonprofit public health sector. Embrace this opportunity to advance your career, strengthen your organization, and contribute to a more just and sustainable public health landscape.

Core Curriculum for Nonprofit Management



The Nonprofit Management in Public Health Certificate (NMPHC) curriculum is designed to provide participants with the critical knowledge and applied skills necessary to thrive in nonprofit leadership roles. Over the course of six months, participants will engage in a structured sequence of live seminars, guided discussions, and project-based learning. Each module builds on the next, creating a comprehensive foundation for effective and sustainable nonprofit management in public health.

Nonprofit & Public Health Fundamentals: Start with a comprehensive introduction to nonprofit organizations and their crucial role in promoting public health. Explore the legal and organizational structures of nonprofits, the responsibilities of nonprofit leaders, and the unique opportunities for delivering health services, advocacy, and community programs.

Mission and Vision for Nonprofits: Learn how to craft, refine, and implement mission and vision statements that drive meaningful impact. Align with community needs and public health priorities, ensuring that organizational direction reflects values and strategy.

Communication and Marketing for Nonprofits: Develop strategies to effectively tell your organization's story, engage diverse audiences, and build credibility with stakeholders. Topics include branding, digital communication, media outreach, and message framing tailored to public health issues and populations.

Fund Development for Nonprofits: Gain the tools to build sustainable funding streams through grants, donations, partnerships, and earned revenue. Participants will examine donor stewardship, fundraising campaigns, grant writing, and resource development.

Financial Management and Governance for Nonprofits: Understand the essentials of nonprofit finance, including budgeting, financial reporting, and compliance. Learn best practices for working with boards of directors, establishing strong governance systems, and ensuring transparency and accountability in nonprofit operations.

Public Health Program Development for Nonprofits: Apply nonprofit management principles to the design, implementation, and evaluation of public health programs. This course integrates project planning, logic models, evaluation strategies, and partnership building to ensure programs are both evidence-based and community-centered.

Nonprofit Management Certificate Elements

The NMPHC program is designed to ignite your potential, offering a multifaceted approach to building programs and creating nonprofit impact in the field of public health. This fast-paced program provides extensive exposure to public health leadership within a six-month timeframe and leverages deep expertise in leadership development.



Dynamic Monthly Seminars: Structured as a 6-month certificate program featuring interactive monthly seminars, each live, 1.5-hour session explores a core dimension of nonprofit management through the lens of public health. Sessions build on one another to create a cohesive educational journey, blending faculty-led instruction with real-world case discussions and peer exchange.



Flash Mentoring Sessions: Supplement your experience with flash mentoring sessions featuring career-development guidance and insights from seasoned professionals in dental public health. These one-hour sessions provide a unique opportunity to tailor your learning to your career aspirations and typically occur every other month.



Networking and Community Building: NMPHC provides structured opportunities for participants to connect with peers across the public health field. Each cohort forms a supportive learning community where participants share insights, challenges, and strategies. Faculty and guest speakers offer additional opportunities to expand professional networks.



Faculty Expertise: All courses are taught by public health practitioners with advanced training (MPH, doctoral-level) who are currently leading nonprofit organizations. Their lived expertise ensures participants gain practical, relevant knowledge that reflects the realities of nonprofit management in the public health sector.



Transformation Project: Throughout the 6-month NMPHC program, participants will develop and complete a Transformation Project. These projects are a hands-on opportunity to apply the skills developed in alignment with the course curriculum. Participants have the option to choose what's best for them: a nonprofit business plan or a mock grant application.

The Application and Selection Process

Interested individuals should [complete the program application](#) by **Monday, November 17, 2025, at 5:00 pm PDT**. **As a fully virtual program, it is not required to live in the United States to participate but participants are required to attend live seminars attuned to US time zones.** AIDPH staff and program faculty will assess each application to ensure that applicants are positioned well to participate and are likely to benefit from doing so. In reviewing each application, AIDPH will consider:

- Demonstrated self-awareness of one's leadership strengths and opportunities for growth.
- Desire to build skills and abilities in an applied nonprofit setting in oral health, public health, and/or other healthcare delivery spaces.
- The overall thoughtfulness and thoroughness of answers to the application questions.
- The availability and willingness to commit the time necessary to complete the program and participate fully.

| | |
|---|--------------------------------|
| Application guidance issued | September 2025 |
| Applications due via this form | November 17, 2025 |
| AIDPH sends notifications of acceptance decisions | December 3, 2025 |
| Participants sign written commitment to participate and pay tuition | December 3 - December 20, 2025 |
| Monthly cohort calls begin | January 2026 |
| Program concludes and certificates are awarded | June 2026 |



Nonprofit Management Program FAQs

- **What should I expect from my NMPHC Program experience?**

Your NMPHC experience will be an engaging and applied journey into the fundamentals of nonprofit management, specifically tailored for the public health workforce. This 6-month program requires a time commitment of approximately three to five hours per month, including live seminars and short assignments. You will gain the most value by actively engaging in each program element and working steadily on your transformation project, which coalesces into a practical product you can use in your professional setting.

- **Who is a good fit for this program?**

This program is open to any public health professional, regardless of career stage or prior nonprofit experience. It is particularly valuable for those interested in developing skills to enhance their nonprofit management capacity, aspiring to take on leadership roles in public health nonprofits, and seeking to expand their knowledge of governance, finance, fundraising, and program development in nonprofit settings. **AIDPH encourages applicants from traditionally underrepresented and historically excluded communities.** Please reach out to programs@AIDPH.org with any questions about eligibility.

- **How much does the program cost?**

For this inaugural cohort, program tuition is **\$500**. AIDPH encourages applicants to seek financial support from their institutions or employers, or from other external sources. AIDPH has prepared [this letter](#) describing the benefits of the program to both schools and employers. Please take the time to review these letters for your personal use in exploring potential sponsorship opportunities from your organization.

- **How is the program delivered?**

This fellowship is tailored to a virtual environment, with seminars, course materials, peer networking, and mentorship facilitated in the AIDPH Academy. Seminars and calls will be conducted via Zoom.

- **What should I expect when I complete the program?**

Upon completion, you will earn a certificate of achievement from the AIDPH Academy and be inducted into the Academy's alumni network. You will also graduate with a practical, portfolio-ready deliverable that demonstrates your applied learning. Many of our program alumni leave with CV-building activities and skills that facilitate unique personal and professional growth.

Expectations of Participants

To ensure the value of this program to the full cohort of fellows, each individual taking part in the DPHLA will commit to the following fellowship policies:

- 1) Attend live at least 5 of the 6 monthly seminars, which will typically be held on the fourth Thursday of each month* (January 2026 – June 2026) from 12:00 to 2:00 pm ET. All fellows must attend the first seminar in January. *Some seminars may be adjusted in accordance with national conferences or holidays, depending on how the calendar falls*
- 2) Submit assignments, including pre-work for seminars, sections of the program's individual transformation project plan, and other requests for information related to the program by the deadlines provided. AIDPH will grant extensions when communicated at least 48 hours in advance.
- 3) Actively engage in the program's shared online workspace.
- 4) Maintain confidentiality related to other participants' experiences, organizations, projects, and other information shared during the program, except when provided with explicit permission to do so.
- 5) Comply with program norms and expectations as set by program faculty and fellow participants.

Individuals who do not comply with program expectations jeopardize their ability to earn a certificate and be included as a fellow of the AIDPH Academy.

Statement of Accessibility

AIDPH is committed to ensuring accessibility and inclusion in our programming. As such, we will work with each fellow to determine what, if any, accessibility accommodations are needed to fully participate in the program and coordinate those needs as possible during the program.

Please reach out to programs@AIDPH.org with any questions about the application, selection process, or program.