

1950-1953

PLANNING FOR A PARISH HALL

For twenty years the original hall had served well as a dual church/community room. The post war influx of people and the baby boom (300 children for Sunday school!) made it necessary to add another building.



The obvious space for a building was next to the original hall, but it took several years to buy the two lots needed.

In the meantime Crawford and Mann Architects, a Mill Valley firm, was hired to design the building. While the membership had hoped to build in a style similar to the original hall, building codes now required walls resistant to a fire lasting for one hour. A Maybeck inspired building made from wood was no longer possible.

Thus the cinder block walls and the modern fifties design.

1953-1954

THE CONSTRUCTION, STAGE ONE

The construction started in October of 1953 and on March 28, 1954, stage one of the new hall was finished and it opened to the public.



Dedication of the new hall

1954

The inside initially looked like a gymnasium hall: bare beige cinder block walls, concrete floors, and it was without the planned partitions for various levels of classes for the children. It was not yet fully functional. More work to be done.



Within two years, accordion doors and walls for the children's classrooms, wood floors, a kitchen and a new entry from Olive Street.

1955-2000



Dance parties, lectures, potlucks, rummage sales and lectures as well as official church meetings and celebrations were now taking place in the hall.

As the baby boom faded and the urgent need for classroom space decreased, the Church also rented out the hall and the adjacent rooms to local organizations.

2000-present

Fifty years later the hall and its surrounding areas needed repairs and updating.

“Mission 2000” collected money for a thorough renovation making the space more comfortable with improved heating and larger skylights allowing in more natural light. The cement block walls were sheetrocked and painted. Gone was the stark sixties gymnasium look, and it was named “Tamalpais Hall.”

Landscape architect Hope Rehlaender redesigned the outdoor landscaping, and redid the entryway to make it ADA compliant and more attractive. The bathrooms were redesigned by Helen Som, the in-house architect, and they were also made accessible.

The now unnecessary separations into small classrooms were permanently removed to create one spacious room suitable for large gatherings.



2024

The hall continues to be used for church social events and is also rented out for classes, films, performances, summer camps, weddings, memorials or other community needs. The adjacent updated kitchen is available for catered meals.

Community Church of Mill Valley

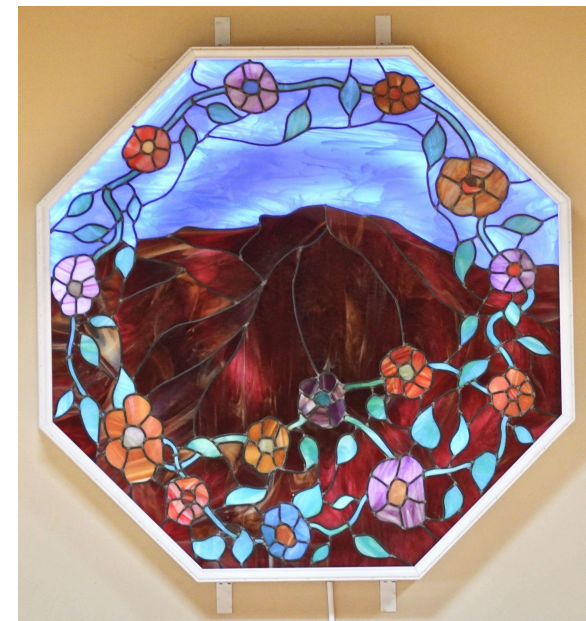
8 Olive Street

Mill Valley CA 94941

415-388-5540

ccmvucc@comcast.net

For more information about Church history and the accessible rooms , including rental options, check the developing history page on the Church web site in 2024.
www.ccmvucc.org



A Brief History of “Tamalpais Hall”

*“The Tamalpais Hall is
very multi-purpose,
very multi-functional.
That is its special quality”*

Harriet Kostic.

Community Church of Mill Valley

8 Olive Street

Mill Valley, Ca 94941