

## **Kyra**

### **Makeup Description**

Sassy, sexy makeup. Emerald green eyeshadow covering just the lid. Winged eyeliner on top of the eye. Dark purple lipstick with a slightly darker lip liner. Can be either glossy or matte. Mascara on top and bottom lashes, falsies can be used for the upper lashes if preferred. Color in eyebrows with hair color, shape them to look slightly sharp or harsh. Mauve or purple-toned blush that highlights the upper cheek. Contouring for stage (tutorial below). No highlighter. Powder required. Foundation and concealer recommended.

### **Hair Description**

Straight hair with 2 high pigtails. Reference photos below!

### **Products Needed**

Foundation (recommended)

Concealer (recommended)

Powder (required)

Dark Purple lipstick (can be either glossy or matte, lined with a slightly darker color)

Blush (mauve-toned)

Contour/Bronzer (either or, I personally use bronzer as contour, either liquid or powder is fine)

Eyeshadow (emerald green, I have a palette for you if you don't have a good color or shade)

Eyeliner (black winged eyeliner)

Mascara (definitely for bottom lashes, falsies can be used for top lashes, whichever your preference is)

Remember to contour the jawline as well

 4 Contour Placements That Transform You're Face! | Christen Dominique

Different types of blush, "C" type blush for Kyra

[https://youtube.com/shorts/1THiYWHH7sw?si=iidC85\\_fKloYmRrI](https://youtube.com/shorts/1THiYWHH7sw?si=iidC85_fKloYmRrI)

Lipstick tutorial. Just with a much darker shade of purple.

<https://youtube.com/shorts/yyugbvSQxog?si=O-6MEwunVpNJ7bC->

Blush tutorial

<https://youtube.com/shorts/m60Lt5h2vFo?si=o5RWG59SNF-e8oXv>

 How To: Perfect Winged Eyeliner Every Time | Cat Eye Tutorial



Eyeshadow/mascara inspiration photo



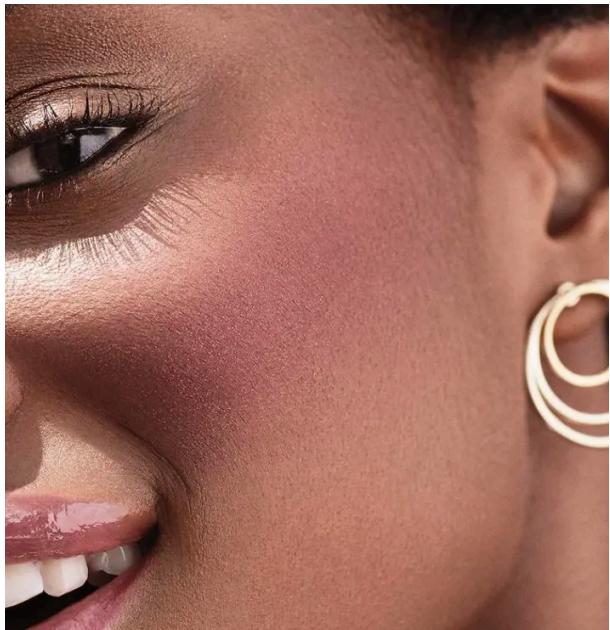
Eyeliner inspiration photo



Lipstick inspiration photo



Lipstick inspiration photo



Blush inspiration photo



Hair inspiration photo



Hair inspiration photo