

Experience Design
Illness & Screening Protocols at BPS PK-12 Schools

[Enabling School Elements](#) [Synchron](#)

The various approaches, structures, and resources related to areas like curriculum, hiring, technology, and more that enable the stakeholder experiences.

[Logistics & Operations](#)

[All Linked Artifacts](#)

Enabling School Elements



Logistics & Operations

How budgets are allocated, as well as operational dimensions such as transportation, nutrition, and meal systems.

Accommodations Related to COVID-19

If a parent/guardian believes that their child's underlying medical condition places that child at increased risk of severe illness from COVID-19, they should access the District's form document used to make requests for a Section 504 Plan, and confer with the student's health care provider to identify the underlying medical condition(s) and the proposed accommodations that they believe would enable the student to access a free and appropriate education. The parent/guardian should then meet with the school nurse and principal to review the information and design a Section 504 plan for the student. Please contact Kristen Matthes, in the Office of Pupil Personnel for more information.

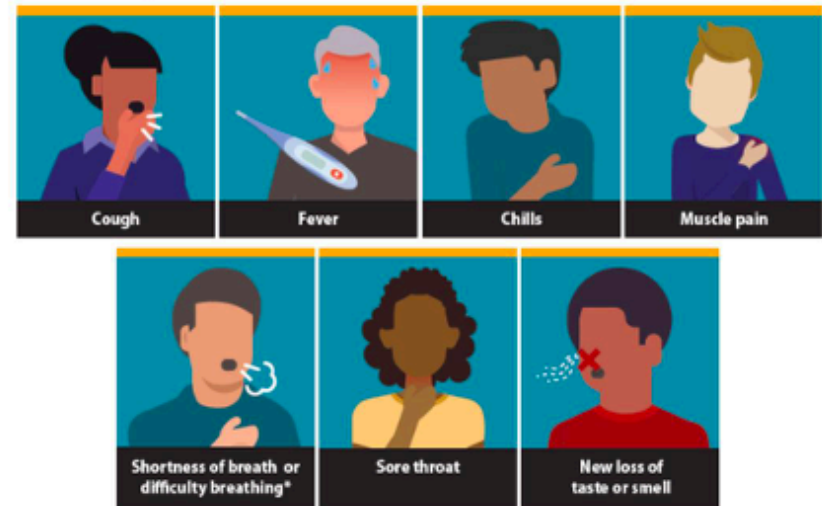
COVID Symptoms

The Barrington Public Schools is relying upon the Guidance for COVID-19 outbreak response, set forth by the Rhode Island Department of Health in the June 16, 2021 publication entitled ["Outbreak Response Protocol: Pre-K-12."](#) The relevant portions of this document appear below, as applicable. If this Guidance changes, and as other information or guidance becomes available, these protocols may be updated.

Symptoms of COVID-19

In the absence of a more likely diagnosis by a healthcare provider, any person with one or more of the following symptoms should isolate and get a test:

- Fever or chills
- Cough (new)
- Shortness of breath or difficulty breathing
- Fatigue
- Muscle or body aches
- Headache
- Sore throat
- New loss of taste or smell
- Congestion or runny nose (new)
- Nausea or vomiting
- Diarrhea



Well Students

Parents/guardians will [screen their child](#) for temperature, other symptoms, and risk factors for COVID-19 each day before sending their child on the bus or into the building. If the student has any signs of illness or risk factors, they must remain at home and the school nurse will be contacted. We will send routine reminders to all families and staff with visual and written reminders about how to screen for symptoms of and risk factors for COVID-19 and what would necessitate the child to stay home. We will have a variety of options for that reminder so that they do not become repetitive and lead to people ignoring them too easily. We will also provide emailed videos and directions prior to the start of school.

To decrease quarantine and testing, Barrington Public Schools respectfully requests that parents provide the schools with proof of vaccination for their vaccinated children using the proof of vaccination form provided by the school nurse, who will maintain this information within the student's health records.

Quarantine Due to Travel

Barrington Public Schools discourages travel during this time, especially for unvaccinated individuals. If an unvaccinated student or staff member travels to an area that requires quarantine upon return to the District for travel, they must quarantine in accordance with the Rhode Island Department of Health Guidelines. Unvaccinated travel outside of the state for more than 24 hours requires a PCR test on day five, returning to BPS on day 8, monitoring for 14 days, as it can take several days for the test to show positive. Unvaccinated travel quarantine results in the use of staff sick days. [RIDOH Playbook June 2021](#)

Sick Students

Parents/guardians must not send their children to school if they show any signs of illness, including a fever of 100 F or greater, but instead should monitor at home for symptoms of illness or increasing fever. In addition, if a child requires ibuprofen (e.g., Advil or Motrin) or acetaminophen (e.g., Tylenol) to alleviate symptoms of illness, they may not attend school. Finally, if any member of the household has symptoms of COVID-19 or presents with any risk factors for COVID-19 as outlined on the attestation form, the parent/guardian must NOT send the student to school.

If a student at school develops any signs of illness or has a temperature of 100 F or higher, they will be assessed by the nurse and sent home from school. They will immediately be provided a face covering, if not already wearing one, and will be brought to wait in the school's

designated isolation area with supervision until picked up by the parent/guardian. The waiting area and all touched surfaces will receive the highest level of disinfection. A member of the administration, secretarial staff, or nurse will contact a parent/guardian to arrange immediate pick up of the sick student. Parents/guardians will be asked to pick up the student as soon as possible but the pick up must be within one hour.

Parents/guardians will be advised to seek medical advice for the student; if the symptoms indicate a Probable case, or if the health care provider recommends testing, then the student should be tested for COVID19.

Distance Learning will only be in place for students issued a quarantine order from the district. [See Specific BPS Protocols.](#)

For a summary of the above protocols and those that steps must be taken for the student to return to school, please see below under "Return to School/Work RIDOH Protocols for Students and Staff".

Unvaccinated Staff/Attestation/Proof of Vaccination

Each day, **unvaccinated staff** must complete the screening protocol and Google Self-Attestation form indicating that they are symptom-free and risk-free before arriving at work. Unvaccinated staff will be required to be tested once a week in substantial transmission and twice a week in high transmission periods. All unvaccinated staff must wear two masks or a KN95 mask. **Vaccinated staff that have provided proof of vaccination do not need to submit a daily attestation form. The proof of vaccination must be submitted ([through our portal](#)) to Doug Fiore.** Barrington Public Schools is in the process of instituting a vaccination mandate for staff. More information will be communicated as the protocols for vaccination mandates are developed.

Sick Staff

If a Probable case - [Return Attestation Forms](#) and [COVID-19 PK-12 Symptoms Screening Tool](#)

Protocol for a Symptomatic Individual

Updated

Situation	Isolation and quarantine protocol	Recommended testing protocol	Requirement to return
Staff or student has a symptom(s) of COVID-19	<p>Symptomatic individual is isolated, sent home,</p> <p><u>Unvaccinated household contacts</u> must quarantine while test results are pending</p> <p>School close contacts do NOT need to quarantine while test results are pending the</p>	<p>Advise symptomatic individual to seek medical advice and get a PCR test.</p> <p><i>RIDOH may recommend testing for others in certain situations.</i></p>	<p>Attestation that confirms one of the following (parent/guardian attests if a minor)</p> <ul style="list-style-type: none"> • Not tested <ul style="list-style-type: none"> • Has been fever free for 24 hours without use of fever-reducing medication and symptoms improved (back to usual health). • Must have attestation from a professional health care provider if there's a more likely diagnosis. • Tested negative (PCR) <ul style="list-style-type: none"> • Has been fever free for 24 hours without use of fever-reducing medication and symptoms improved (back to usual health). • Tested positive (PCR or antigen) <ul style="list-style-type: none"> • Has met RIDOH guidelines for ending isolation.

[Return to the Learning During Coronavirus School Examples and Resources Library](#) 

If a Positive test -[Return Attestation Forms](#) and [COVID-19 PK-12 Symptoms Screening Tool](#)

Protocol for a Confirmed Case

Updated

Situation	Isolation and quarantine protocol	Recommended testing protocol	Requirement to return
Staff or student tests positive	<p>Person testing positive is isolated per CDC/RIDOH guidelines</p> <p>Close contacts are quarantined per CDC/RIDOH guidelines</p>	<p>Close contacts in quarantine should self-monitor for symptoms and seek medical advice as needed. RIDOH recommends all close contacts get tested three to five days after the exposure.</p> <p>Close contacts who are fully vaccinated do not need to quarantine but should get tested three to five days after the exposure.</p> <p>Individuals who have tested positive in the past 90 days do not need to quarantine and should not get tested.</p>	<p>Individuals must meet the CDC/RIDOH guidelines for ending isolation:</p> <p>Symptomatic</p> <ul style="list-style-type: none"> Fever free for 24 hours without the use of fever-reducing medication and Symptoms have improved and 10 days since symptoms first appeared (20 days if severely immunocompromised) <p>Asymptomatic :</p> <ul style="list-style-type: none"> 10 days since date of specimen collection (20 days if severely immunocompromised)

cdc.gov/coronavirus/2019-ncov/hcp/disposition-in-home-patients.html

8/27/2021

63

RHODE ISLAND

The District is following the clearance protocol set forth by the RIDOH as outlined below.

Protocol Summary

	Symptomatic	Person Tests Positive with PCR or Antigen Test	Person Tests Negative with a PCR Test
Isolation and Quarantine Guidance	Isolate. Medical advice. Test. If not tested/tests neg <ul style="list-style-type: none"> Fever free for 24 hours; and Symptoms improved (back to usual health). 	Isolate for 10 days from symptom onset or 10 days from test if asymptomatic; and <ul style="list-style-type: none"> Fever free 24 hours; and Symptoms improved 	<ul style="list-style-type: none"> Fever free 24 hours; and Symptoms improved (back to usual health).
Return to school	Parent/guardian attestation.	Parent/guardian attestation.	Parent/guardian attestation.
Close Contacts	No action.	Follow RIDOH guidance for isolation.	No action.

There are two scenarios.

If a student or staff member is symptomatic and the case is **Probable**, then they must be tested. To return to school or work, the student must produce an attestation (from parent/guardian or the staff member) and deliver it to the principal or nurse or the staff member to Director Fiore. [Return Attestation Forms](#) and [COVID-19 PK-12 Symptoms Screening Tool](#) The attestation must document either that the student or staff person has:

- Tested negative for COVID-19 and has been fever-free for 24 hours and the symptoms improved (back to usual health) or
- Tested positive for COVID-19 and has since met the RIDOH guidelines for ending isolation; or

Third, if student or staff member tests positive for COVID-19, then the parent/guardian or staff person must take all the following steps:

- Notify School Nurse and Principal (Student) or Principal, Nurse, and Doug Fiore (Staff) immediately so contact tracing can be carried out.
- Complete any paperwork and/or provide information to the District and/or the RIDOH as part of this contact tracing.
- Complete the period of isolation, if a staff member, or ensure completion of the period of isolation, if a student, as directed by the RIDOH and as reflected in the chart below.
- If a staff member, enter absences in Aesop for the minimum 10-day period, and any additional days as determined by the health care provider.
- Produce copy of the COVID-19 test results, verifying date of the positive test to confirm isolation/quarantine period has been met per RIDOH guidelines, to Principal/Nurse, as a condition of return to school (student) or to Principal/Nurse/Director Fiore to return to work (Staff).

When a Family or Household Member Is Ill

If Exposed to a Confirmed Case of COVID-19 (Family or Household member)

Quarantine for Unvaccinated Household Members Who CAN Separate from a Person in Isolation within the Household

Updated

- Household members would start their quarantine from the date of last exposure to the infected household member (called “Day 0”).
- Day 0 is the last day that household members and the infected household member shared living space;
 - Spent time together in the same rooms;
 - Were in close contact (closer than six feet for more than 15 minutes during 24 hours).
- Household members have three options for quarantine starting on Day 0:
 - **Option 1:** 14 days (released on day 15);
 - **Option 2:** 10 days (released on day 11); or
 - **Option 3:** Seven days with a negative test result on day 5 or later (released on day 8).

Quarantine of Household Contacts with Ongoing Exposure

- If a household member has completed 10 days of isolation but still has symptoms, can I start my quarantine or do I need to wait until symptoms are completely gone?
 - As long as the case has been fever-free without fever-reducing medication for 24-hours and there has been an improvement in symptoms, the household members can begin their quarantine.
 - If symptoms have not yet improved, household members need to wait to begin their quarantine.

6/16/2021

| 52

RHODE
ISLAND

Steps the District will Take to Determine Close Contact in Schools and Contact Tracing

- If a student or faculty test positive for COVID-19 or is determined a Probable Case, the District will contact the Rhode Island Department of Health
- The District will engage in contract tracing and contact the Rhode Island Department of Health based on the protocol for determining close contacts
- The District will follow the guidance from RIDOH regarding next steps and communication

Determining Close Contacts in Schools

Close contacts in schools:

- Settings where physical distancing can be maintained or determined
 - **Close contacts are those within 6 feet for > 15 minutes**
 - Classrooms with assigned seats
 - Buses with assigned seats and controlled entry/exit
 - Seating charts needed for contact identification and tracing
- Settings where physical distancing cannot be maintained or determined :
 - **Entire classroom/stable group members are likely to be close contacts**
 - Childcare and summer camp
 - K-12 classrooms without physical distancing or assigned seats
 - Sports teams

Note: case investigation may reveal additional close contacts

| 13 |

RHODE
ISLAND

What is Isolation?

Isolation is for the ill or infected:

- Separating individuals who are infected with COVID-19 from others.
- Stay home and isolate from household members as much as possible.
- The Duration of isolation depends on whether the individual is: • Symptomatic or asymptomatic • Immunocompromised

Isolation for Symptomatic Individuals

Isolation for Symptomatic Individuals

Symptomatic

- At least 10 days since symptoms first appeared (20 days if severely immunocompromised); and
- At least 24 hours with no fever without fever-reducing medication; and
- Other symptoms of COVID-19 are improving.
 - Loss of taste and smell may persist for weeks or months after recovery and need not delay the end of isolation.



*Assuming that symptomatic criteria are met.

[cdc.gov/coronavirus/2019-ncov/if-you-are-sick/isolation.html](https://www.cdc.gov/coronavirus/2019-ncov/if-you-are-sick/isolation.html)

Screenshot

6/16/2021

24

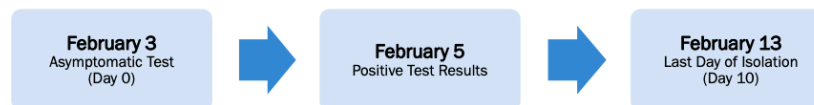
RHODE ISLAND

Isolation for Asymptomatic Individuals

Isolation for Asymptomatic Individuals

Asymptomatic

- 10 days from the date of individual was tested (20 days if severely immunocompromised).
- If symptoms develop during isolation, follow guidance for isolation for symptomatic individuals on Slide 23.



[cdc.gov/coronavirus/2019-ncov/if-you-are-sick/isolation.html](https://www.cdc.gov/coronavirus/2019-ncov/if-you-are-sick/isolation.html)

6/16/2021

25

RHODE ISLAND

What is Quarantine?

Quarantine is for unvaccinated individuals who had known close contact to a case or unvaccinated individuals returning from international travel or domestic travel to an area with high community spread as indicated on the RIDOH website.

- Quarantine keeps someone who may have been exposed to the virus away from others.
- These individuals **must stay home and monitor for symptoms**.
- Last date of exposure is Day 0.

Barrington's Quarantine Option

Unvaccinated individuals must immediately test with a PCR and remain quarantined 7 days from the last day they were in contact with the infected individual if they get a negative test (PCR or antigen test) on day 5 or later in accordance with Executive Order 21-94. Continue to watch for symptoms through day 14.

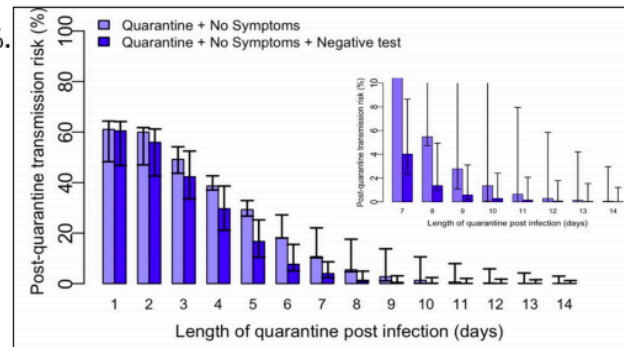
CDC Rationale for Shortened Quarantine Options

- **10-Day Quarantine without testing**

- The post-quarantine transmission risk is approximately 1% (upper limit of 10%).
- A negative test result at day 10 reduces the risk to approximately 0.3%.

- **Seven-Day Quarantine with negative test result on day 5**

- The post-quarantine transmission risk is approximately 5%, (upper limit of about 12%).



Contact Tracing, Isolation, and Quarantine Determination Process

Based upon the current case rates, the limited spread within Pre K-12 settings, the high vaccination rates in Rhode Island, and the importance of in-person learning, Barrington will implement the “7 day with testing” quarantine option. This option is the least disruptive to students' education and to families' lives. With this option, close contact individuals can return to school on Day 8 with a negative test from Day 1 **and** Day 5 or later, and should also watch for symptoms until 14 days after exposure in accordance with Executive Order 21-94. Under Executive Order 21-94, vaccinated close contacts must test with a PCR on day 3, 4, or 5. Vaccinated individuals do not need to quarantine, but must wear a mask in all indoor public places until they receive a negative PCR. Please note: **RIDOH may recommend longer quarantine lengths in certain situations. Even if not quarantined, Executive Order 21-94 requires testing of all close contacts using a PCR lab test.**

Barrington will continue to provide seating charts and contact information to the R.I. Department of Health if positive COVID-19 cases arise amongst their staff or students.

- If there is a positive case within a stable pod, it is likely that the entire stable pod will need to quarantine if no physical distancing took place.
- If students share an outdoor space (such as recess), case investigation will be done at the individual level to try to determine any close contacts. After close contact with a person infected with COVID-19 in a Pre K-12 setting, who needs to quarantine?
- An exposed person (close contact) who was within 6 feet of the infected person for at least 15 minutes over 24 hours needs to quarantine.

Exceptions to quarantine after close contact with a person infected with COVID-19 in a K-12 setting

- Fully vaccinated close contacts do not need to quarantine. A person is fully vaccinated after 14 days from receiving all doses of an FDA-approved or WHO-approved COVID-19 vaccine.
- Close contacts who have been diagnosed with COVID-19 during the past 90 days do not need to quarantine.
- A K-12 student exposed to a K-12 student infected with COVID-19 does not need to quarantine if all of the following apply:
 - K-12 students: both the infected person and exposed close contact are K-12 students;
 - Indoor classroom: the close contact exposure occurred in an indoor K-12 classroom;
 - Physical distance: at least 3 feet of physical distance was maintained at all times during the close contact exposure;

- Face masks: both the exposed (close contact) student and the infected student wore a face mask at all times during the close contact exposure; and
- All recommended K-12 mitigation strategies were in place at the school when the exposure occurred: promoting vaccination; consistent and correct mask use; physical distancing; screening testing plan to promptly identify cases, clusters, and outbreaks; ventilation; handwashing and respiratory etiquette; staying home when sick and getting tested; contact tracing, in combination with isolation and quarantine; and cleaning and disinfection.

This exception does not apply to unvaccinated teachers, staff, or other adults in the indoor classroom setting. Remember, even if exempt from quarantine, Executive Order 21-94 requires all close contacts to test with a PCR.

Quarantine Questions

For Individuals who are not Fully Vaccinated

Updated

- Do contacts of contacts need to quarantine?
 - No. Only close contacts of the person who was infectious need to quarantine.
- If I get tested during quarantine and I have a negative result, does my quarantine end?
 - Yes. If you get tested on day 5 or later (with either an antigen or PCR test), your last day of quarantine will be Day 7. You can resume normal activities on day 8 and continue to monitor for symptoms through day 14.
 - If you get tested earlier than day 5 you cannot end quarantine after day 7.
- If I am not on quarantine and I want to go for asymptomatic testing, do I need to quarantine while I wait for results?
 - No. If you are asymptomatic and get tested, you do NOT need to quarantine while results are pending.

6/16/2021

34

RHODE
ISLAND

Quarantine Questions

For Individuals who are not Fully Vaccinated

Updated

- If I get tested during quarantine and I'm positive, how long do I need to stay home?
 - If an individual on quarantine tests positive for COVID-19, the person must isolate for 10 days from symptom onset or 10 days from the date of the specimen collection if the person is asymptomatic.
- When do close contacts of a probable case need to stay home?
 - Only unvaccinated household contacts of a probable case should stay home while tests results are pending because of the increased exposure they have in the home environment.

6/16/2021

| 35

RHODE
ISLAND

Working Remotely

This “remote teaching” or “remote working” was accommodation available during the COVID-19 pandemic before vaccinations were widely available. Remote teaching is less likely to be available to accommodate those at risk of increased illness from COVID-19 as fully vaccinated individuals are now so protected.

In specific instances, however, staff members may be accommodated with remote work. For example, the Superintendent may decide that individuals subject to quarantine or isolation orders directives are able to effectively carry out teaching or work responsibilities while working remotely. In all instances, the Superintendent retains the sole authority and discretion to make the final decision as to whether to grant the staff member this accommodation of remote work.

A staff member working remotely is expected to carry out all their professional responsibilities and job duties effectively and completely, in the same manner, and with the same fidelity to attendance and availability for both teaching and related duties (such as meetings with students and colleagues), as if they were carrying out duties on site. The staff member must make themselves available on an as-needed basis as determined by the supervisor to engage in and complete tasks that cannot be done remotely. There shall be no change in

compensation or benefits for those carrying out their job duties remotely, and staff members shall contribute the same hours of service as if working on site.

Any staff member using equipment supplied by the district, including electronic equipment, shall use it for professional and work purposes only. Staff members shall keep the equipment in a designated work area at home not accessible to others and must ensure the security of all confidential information using locked cabinets and desks and diligent attention to password protection. All staff members working remotely shall receive desk help support from the IT department as needed.

Sick Time for Staff Not Impacted by COVID

Staff members who are sick, or whose family member is sick, and who cannot come to work, shall discharge their own accrued sick time and record their absence in AESOP as they typically would. In addition, If they seek a leave of absence under the Family and Medical Leave Act or as an accommodation under the Americans with Disabilities Act, they must seek authorization from the Superintendent and shall be expected to discharge their own sick time and/or may make application to the Major Illness Bank in accordance with Committee policy and the collective bargaining agreement, if applicable. [Reasonable Accommodation Policy](#). [ADA Accommodations Request Form](#). [ADA Leave of Absence Form](#). [FMLA Policy and FMLA Staff Form](#), and [FMLA Family Form](#).

In addition, a staff member out for three days or more must request documentation from their health care provider. This documentation then needs to be submitted to Director Fiore's Office.

Sick Time for Staff Impacted by COVID

Note that the mandates under the [Emergency Paid Sick Leave Act](#) and [The Expanded Family Medical Leave Act](#) expired on December 31, 2020.

Staff who are personally subject to quarantine or isolation by order of the Rhode Island Department of Health will not be required to discharge sick days but may be granted permission to work remotely (see Working Remotely above).

Staff will be required to discharge their own sick days if caring for individuals in their household who have tested positive for COVID-19, unless granted permission to work remotely (see Working Remotely above).

With approval from the Superintendent, staff members may be eligible to discharge sick days or work remotely for family members under the age of 12 or who have a disability that requires parent/guardian supervision, and who are subject to quarantine or isolation by order of the Rhode Island Department of Health, but **who are not positive for COVID-19**, unless granted permission to work remotely (see Working Remotely above).

All Linked Artifacts

[Masks and Face Coverings](#)

[BPS Contact Tracing](#)

[Student and Staff Screening Protocols](#)

[Return Attestation Forms](#)

[COVID-19 PK-12 Symptoms Screening Tool](#)

[Full Health and Safety Checklist](#)

[Signage -Feeling Sick?](#)

[RIDOH Playbook June 2021](#)

[Executive Order 21-94](#)