

## Lesson: Infinity Tiles

Grade: 3rd

Integration: Math

<p><b>Description</b></p> <p>This project uses both math and art skills to create 12"sq tiles that connect to one another on every side. By making careful measurements students create "roads" that crisscross through the paper with the negative spaces turned into "fantasy landscapes".</p>	<p><b>Materials</b></p> <ul style="list-style-type: none"><li>• Tag cut to 12" squares.</li><li>• Rulers</li><li>• Extra fine point sharpies</li><li>• Colored pencils</li><li>• White and black crayon</li><li>• watercolor</li></ul>
<p><b>Standards</b></p> <p>VA:Cr1.1.3a Elaborate on an imaginative idea. VA:Cr1.2.3a Apply knowledge of available resources, tools, and technologies to investigate personal ideas through the art-making process. VA:Cr2.1.3a Create personally satisfying artwork using a variety of artistic processes and materials. VA:Cr2.2.3a Demonstrate an understanding of the safe and proficient use of materials, tools, and equipment for a variety of artistic processes. VA:Cr2.3.3a Individually or collaboratively construct representations, diagrams, or maps of places that are part of everyday life. VA:Cr3.1.3a Elaborate visual information by adding details in an artwork to enhance emerging meaning VA:Pr4.1.3a Investigate and discuss possibilities and limitations of spaces, including electronic, for exhibiting artwork. VA:Pr5.1.3a Identify exhibit space and prepare works of art including artists' statements, for presentation. VA:Re.7.2.3a Determine messages communicated by an image. VA:Re9.1.3a Evaluate an artwork based on given criteria.</p>	<p><b>Steps</b></p> <ol style="list-style-type: none"><li>1. Intro project by showing middle school infinity tiles as examples. Generate group discussion exploring how/why these fit together endlessly.</li><li>2. You will likely need to do a mini lesson on using a ruler accurately!</li><li>3. As a group, guided measuring of all sides of tiles at 2", 4", 8", and 10". These need to be pretty exact for this to work....</li><li>4. As a group, connect measurements, crossing the paper creating "roads". Encourage complex, varied paths stress must connect exactly the measured marks at edges of paper. ***Lines should not cross, they need to remain "open" pathways.</li><li>5. Stop and ask what they notice: do they line up, are the interiors the same or different..etc.</li><li>6. Students create fantasy landscapes (aerial view) in the "negative spaces" between the pathways.</li><li>7. Trace over lines with extra fine point sharpies, then erases all pencil lines.</li><li>8. Demo colored pencil technique: using multiple colors in each area, pressing firm. "No white paper showing." Talk about multiple colors add dimension, richness, sophistication, and interest to colored pencil areas.</li><li>9. Students use colored pencils to color their images in their fantasy landscapes: leaving the background white.</li><li>10. Trace around the roads with black crayon to "protect" the watercolor.</li><li>11. Watercolor the landscape backgrounds.</li><li>12. Last!-Paint the roads black with watercolor.</li></ol>

# Lesson: Infinity Tiles

Grade: 3rd

Integration: Math

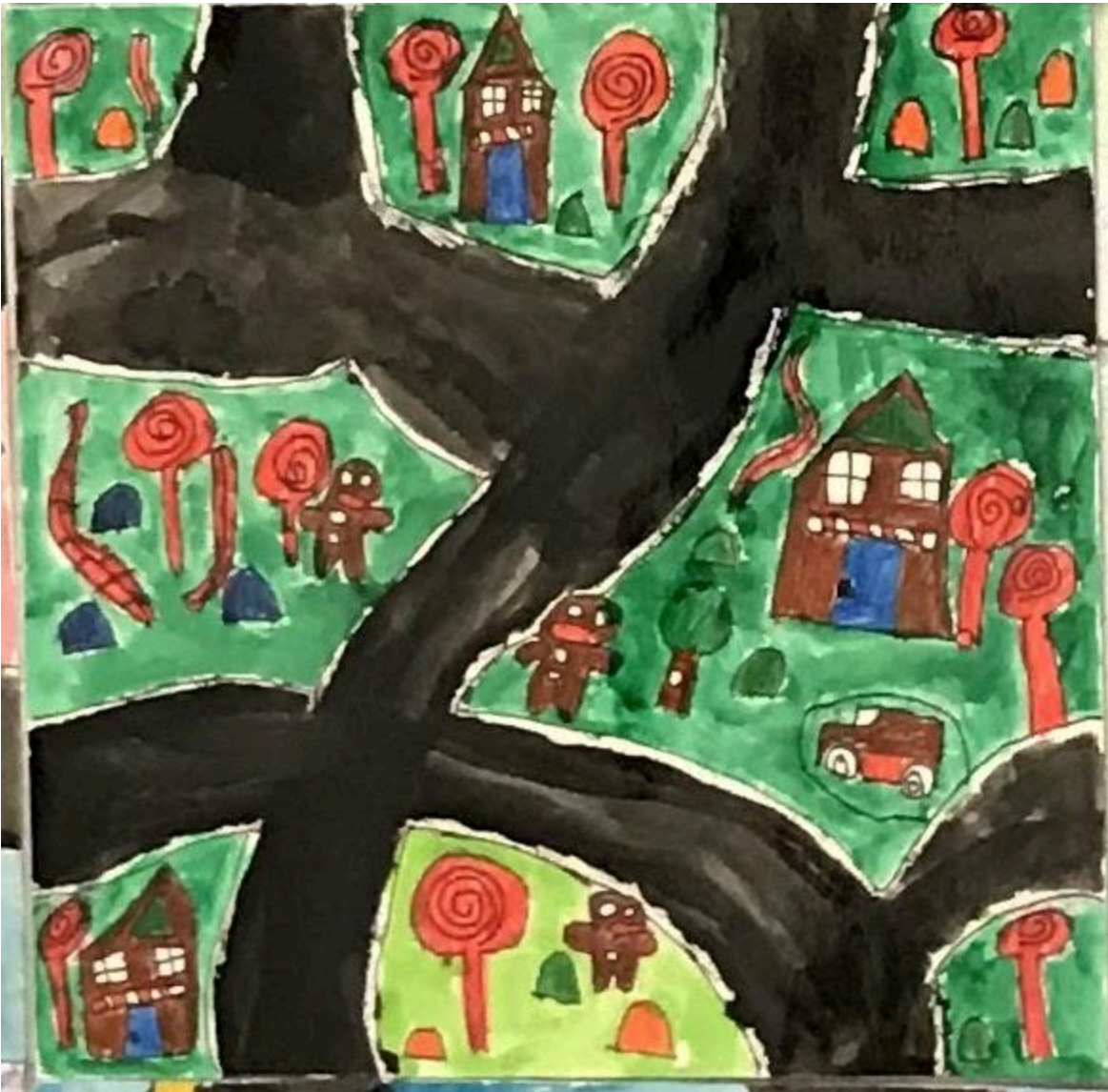




# Lesson: Infinity Tiles

Grade: 3rd

Integration: Math





Lesson: Infinity Tiles

Grade: 3rd

Integration: Math





# Lesson: Infinity Tiles

Grade: 3rd

Integration: Math

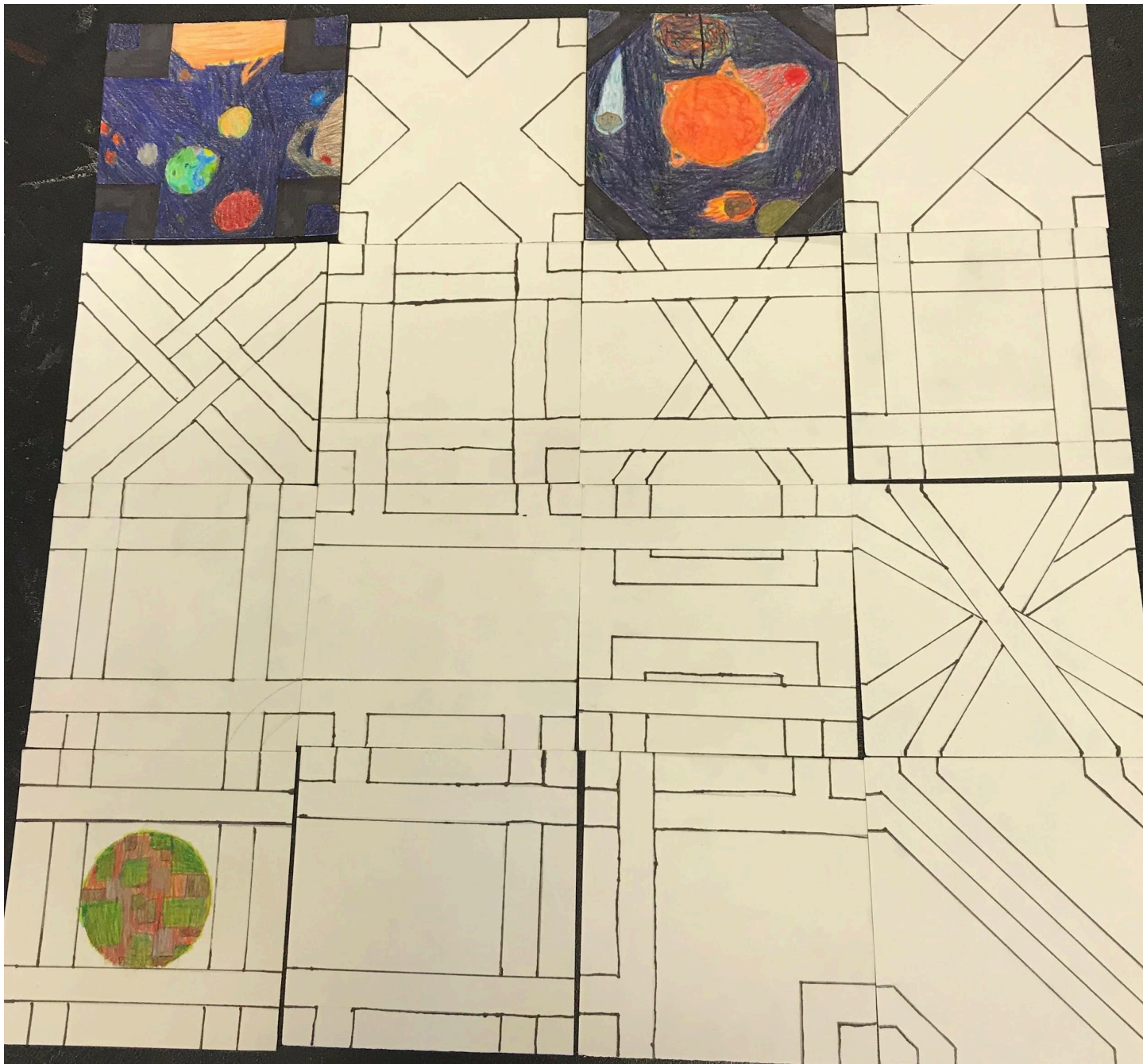




# Lesson: Infinity Tiles

Grade: 3rd

Integration: Math

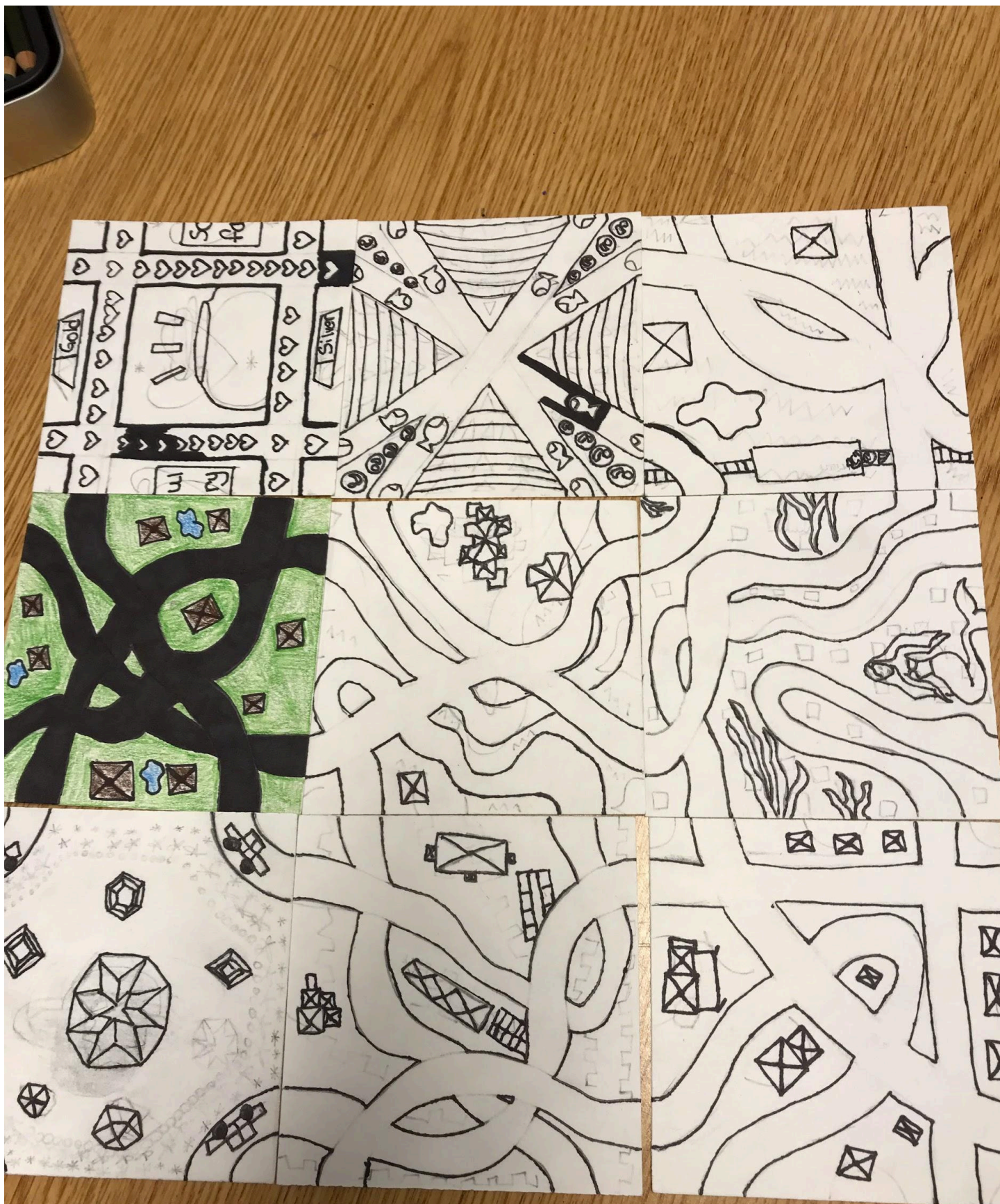




Lesson: Infinity Tiles

Grade: 3rd

Integration: Math





**Lesson: Infinity Tiles**

**Grade: 3rd**

**Integration: Math**

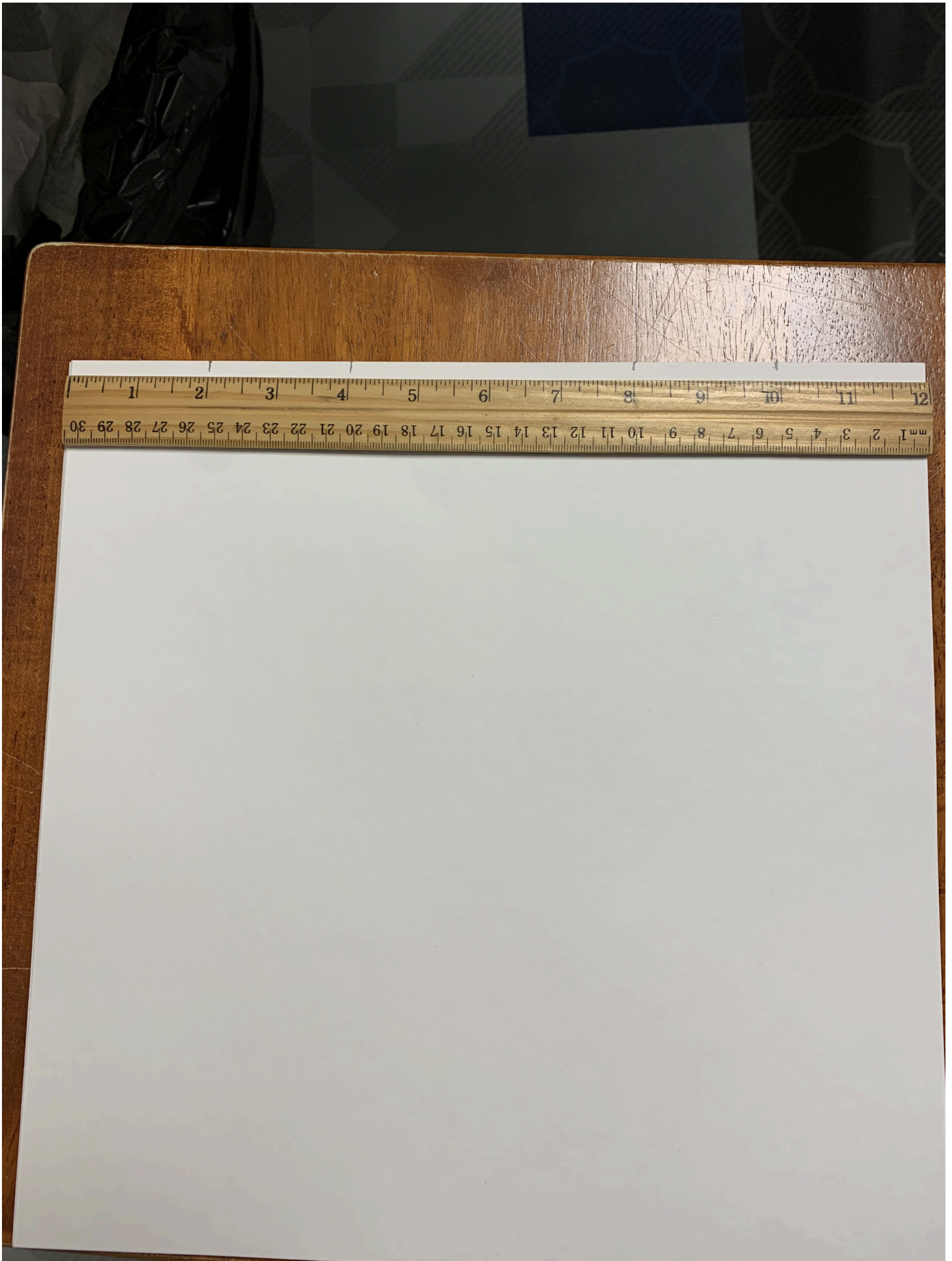




# Lesson: Infinity Tiles

Grade: 3rd

Integration: Math

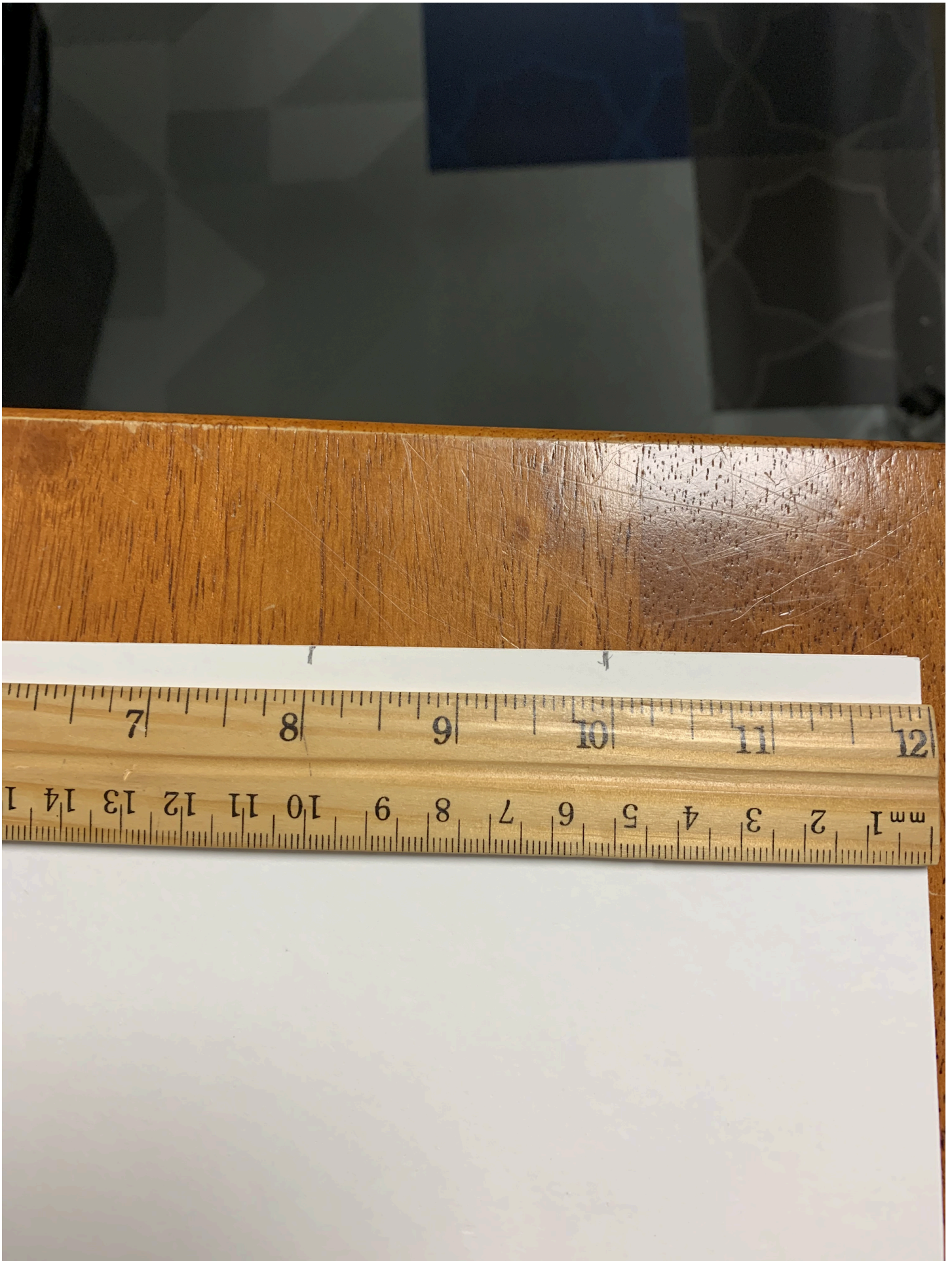




**Lesson: Infinity Tiles**

**Grade: 3rd**

**Integration: Math**





# Lesson: Infinity Tiles

Grade: 3rd

Integration: Math

