

**Nebraska State Bandmasters Association
State Marching Band Contest
Competition Site - Buell Stadium
Millard South High School - 14905 Q St. - Omaha, Nebraska
October 22nd, 2022**

Welcome to Buell Stadium

The band program from Millard South is proud and honored to host the 2022 State Marching Band Contest competition site! We promise to do our best to make your day go smoothly. Please make sure to read through the information carefully as there is some new information included in this packet. We know all of the time and hard work that has gone into the preparation for these performances. Best of luck to you and your students!

Buell Stadium is on the campus of Millard South High School at 14905 Q St. in southwest Omaha. Please refer to the enclosed map for the correct entrance for band buses, equipment trucks and the general public. The stadium will open at 2:00 pm.

Remind for Directors

All Band Directors should already have been invited via email to join the NSBA Remind. If not, please text in to Remind so that we have communication the day of the event.

Text @nsba2023 to 81010.

Site Directors

Darren Myers
(402)307-1605
ddmyers@mpsomaha.org

Vince Simodynes
(402)680-6254
vjsimodynes@mpsomaha.org

*****Our MSHS Band Booster Presidents will be in charge of Stadium issues and will have access to the Remind for communication! Their names are Shane Zezulka and Dawn McCarroll!! The NSBA Representative on site will be Ann Davis.*

General Admission and Complimentary Passes

Tickets may be purchased on site at the ticket windows on the west side of the stadium. Adults are \$9.00 and students are \$7.00. Children ages 5 and under will be admitted free of charge. Cash and Credit Card payment will be accepted however; cash is recommended. Complimentary passes will be sent to the two administrators on your entry form. Band members will have their hands stamped for admission as they leave the buses. One wristband per 10 students are included for staff and chaperone admission.

Dressing Rooms and Rest Rooms

We will not be providing dressing rooms. Please plan to arrive in uniform, or change on your buses. Restrooms are available at the stadium and porta-pots will be in place near the bus parking and pit parking.

Bus and Spectator Parking Information

Bus parking will be in the lot west of Millard South High School. Buses should enter from Q St.

Spectator parking is located in the lots on the east and west sides of the stadium. Spectators should enter from Q St. or 147th St. Parking is a premium during the last cycle. Please let your parents know to arrive at least 45 minutes prior to your group's performance. The overflow parking lot will be the Old Super Saver Parking lot to the Southeast of the stadium.

Equipment Truck Parking

Pit equipment vehicle parking is located in the lot south of the high school. **Trucks should enter from the south on Stonybrook Boulevard from 144th St.** Due to the increase in the number of participating schools using multiple trucks and truck/trailer combinations, space in the equipment lot is at a premium. This could adversely affect the safety of the students, adult volunteers, instruments, and equipment. We ask that the following be observed in order to give every school the appropriate space needed to adequately and safely unload equipment and instruments.

1) Personal vehicles will not be allowed in the equipment truck lot. An exception will be made for personal vehicles delivering late instruments or equipment. These vehicles must exit the lot immediately following the delivery.

2) For those schools feeding their band, You will NOT have access to the Bus Lot or Equipment Lot. You will need to organize in Walnut Grove Park which is northwest of the School Property, on the North Side of Q Street or along the North Wall of the School Building. The Park is walking distance from the lots. Food Preparation or consumption will not be allowed in the South or Bus Parking lots for safety reasons. The Grass area between the bus lot and church is NOT School Property and is NOT available for use.

3) The equipment truck lot is not to be used for practice or rehearsal of any kind (color guard, drumlines, etc.) due to safety concerns. There are designated areas and times for those activities.

Over the years with the growing number of large trucks and trailers, it has become increasingly difficult to safely maneuver around students, instruments, equipment, and props. Every effort will be made to accommodate the needs of each school's equipment vehicles. Thank you in advance for your patience and cooperation.

No Play Zone

To minimize interference, the entire campus is a "No Play Zone" other than the assigned warm-up areas.

Competition & Warm-up Sequence

The sequence begins with your check-in on arrival and continues through the ready area, warm-up, on-deck, and on-field performance. Do not carry large props through the pre-competition sequence.

Check-in

The parking lot attendants will guide you when you arrive. You will be assigned parking spaces for buses and equipment trucks. MSHS Band Boosters/ROTC will answer your questions to the best of their ability, give directions, and a guide will assist you through the entire sequence. Thank you in advance for your cooperation with these volunteers.

Ready Area

Your ready area will be just west of the school. This is a “No Play Zone”. Your guide will meet you at your buses and guide you to this point.

Warm-up Area

You may use this time to warm-up as you choose. The warm-up area is a very large field with approximately 200 yards of lined field. Two bands will warm-up at the same time on different ends of this large area. There is also a percussion warm-up area by the warm-up fields (please see map). Lighting will be provided to ensure safety. You will have 30 minutes at this site before proceeding to the on-deck area outside the stadium.

On Deck Area

You should leave the warm-up area in the order you will enter the stadium. You should be in no more than a double file to easily travel the paved paths to the southeast corner of the stadium.

Pit Equipment & Props Entrance

Sideline percussion, podiums, and props may be unloaded in the parking lot just south of the school. They may be rolled down the ramp into the southwest corner of the stadium. Cars, trucks, vans, etc. will not be allowed into any portion of the load-in ramp. Small golf carts, garden tractors, etc. may be used with extreme caution on the track surface provided that there is a bib to catch oil leaks and the vehicle is in motion when the steering wheel is being turned.

Sideline percussion, equipment, podiums, and small props (as judged by the staff working in this area) will be allowed into the stadium up to 30 minutes prior to the band’s scheduled performance. It will be pre-staged at the southwest corner of the track. The sideline manager will guide the pit where to pre-set their equipment during the previous band’s performance. Pit equipment will move into final position when the band enters to begin its 15-minute performance. The entering pit should stay to the west edge of the track to allow the exiting pit a lane to exit on the east edge of the track nearest the field.

Large props will be allowed to enter the stadium 30 minutes prior to the scheduled performance and need to be kept south of the track until the previous band has concluded. They can make their entrance onto the field at the same time as their band. Please be organized and ready to move quickly.

Timing

Each band will have 15 minutes for field entry, warm-up, performance and exit. The minimum performance time is five minutes. A contest staff member will signal your group when to cross the entry line and communicate the clock has started. Judging begins immediately following the introduction of the band and will cease at the conclusion of the band's performance. The timing for each band will conclude when all of the members, equipment and props have crossed the exit line. All playing sounds (including percussion drum taps/cadence) must stop once the Field of Performance is vacated and the goal line is crossed. Judges are advised not to judge the band's exit.

On Field Performance

You will quietly wait outside the stadium until your time to pre-set. At 13:30 minutes into the previous band's 15-minute performance slot, the next band will be led to the preset area off the performance field. These will be clearly marked and are marked on the enclosed map. Please advise your students they may preset behind the previous band and to conduct themselves accordingly.

The field surface is SprintTurf artificial turf. It is lined with high school hash marks and standard soccer field markings. The Field of Performance, designated as the entry point to begin the 15-minute performance slot, shall be the goal line and the plane of the goal line extended to the stands. Except for beginning and ending the show, there will be no boundary line penalties. Band members and drum majors may perform outside the boundary line but may NOT enter the spectator seating for any reason. The pit percussion area can be any place within the competition area and will not contain any specific markings.

Introduction

The 15-minute timing begins when any portion of the band or their crew and members crosses the entry line. It is possible that the announcements from the previous band will be concluding while the next band is entering the field. The official introduction for the next band should be read by the announcer on a cue given by the field manager after a cue from the drum major or band director.

"Joining us from _____, Nebraska...

please welcome the _____ High School Marching Band!"

(pause for audience response)

"Their musical selections include the following:"

(Announcer reads their selections)

If the drum majors are going to salute, it should occur no later than when the announcer says:

"The Nebraska State Bandmasters Association is proud to present in competition Drum Majors

_____ and _____ and the _____ High School Marching 'nickname.'"

NOTE: Please notify the site directors as soon as possible if your band is using a pre-recorded announcement as part of the show.

Directors' Viewing Area

There will be an area reserved at the top of the stadium, 50-yard line, for directors and staff to observe their band's performance. Please utilize this area only during your group's performance.

Field Exit

At the conclusion of the show the band should move towards the exit boundary line which will be the north goal line (Side 1/Side A) and the plane of the goal line extended to the stands. All portions of the ensemble and their equipment must cross the line prior to the end of their 15-minute time slot. The pits and large props will exit towards the south (Side 2/Side B). All playing sounds (including percussion drum taps/cadence) must stop once the Field of Performance is vacated and the goal line is crossed. Bands with large props need to remove them completely from the field and spectators' view before disassembling them to stay within their 15-minute time slot.

DUE TO LIABILITY ISSUES, Students will not be permitted to “storm” or run onto the field at the conclusion of the awards ceremony.

- ***Penalty: Bands with students who run on the field following the awards ceremony will not be eligible to enter the NSBA State Marching Contest the following year.***

Photography and Videography

A full field view video will be provided to you the day after the contest. We will **NOT** be providing a full band photo opportunity this year.

Will Hernandez will be providing action shots for purchase at the event.

The Hudl Camera will be utilized to provide you with a video of your performance for educational purposes only.

Concessions

The Band Boosters from Millard South High School will be selling concessions in the west stadium. Beverages, meal items, and snack items will be available. During the Millard South performance (**scheduled at 6:15pm**), the **concessions will temporarily close** to allow our parents an opportunity to support and watch their student(s). We thank you for your patience and cooperation.

Seating

All seating is general admission. ***Backfield seating for bands will be used for the last 6 performing bands of the night.***

Presentation of Awards

The Presentation of Awards is scheduled to begin at 9:30 p.m. Uniformed Drum Majors/Guard Captains or student representatives should assemble at the south end of the track at the conclusion of the last competing band.

Bands should remain in the stands. If there are students from the final bands on the track at the conclusion of their performances, they should remain outside of the goal lines and exit through the ramps. **Students**

are not permitted to storm the track or field at the conclusion of the ceremony. Bands with students who disregard this rule will not be eligible to enter the NSBA State Marching Band Contest the following year.

- Champions of each class will have an opportunity at the end of the night to have their photo taken in front of the large scoreboard. 10 designated Parents with camera's from each school will be allowed to Photograph your band at the end of the night.
- Class Winning Bands seated in the Home stands that want to take a group photo should make their way out of the stadium and enter down the ramp on the south side of the stadium. (Where the Pit Percussion Entered) . Mr. Myers or Mr. Simodynes will meet you at the base of the ramp and escort you to the photo site.
- Class winning bands seated in the East Visitor Stands should remain there until Mr. Myers or Mr. Simodynes comes to escort you to the track for your photo.

Stadium Security/Emergencies

There will be Millard Security staff and Band Parents on duty throughout the day. A first aid station will be set up just outside the stadium gate for medical emergencies for students or spectators.

Competition Suite

We will be using Competition Suite again this year. You will be able to listen to your judge's tapes as soon as we have them uploaded. We will not have individual judges' sheets from each judge. After awards you will be able to view the recap sheet on your smartphone, tablet, or laptop. We will also have paper copies of the recap sheet available in the tabulation room. You will need to make an account for Competition Suite using the email address you submitted with your registration. Please let NSBA know if you have any questions.

Judges

Band Directors should refrain from contacting the judges until the conclusion of the contest.

GE Music	Dylan Toombs	Press Box
GE Visual	Susan Bass	Press Box
Ensemble Music	Dennis Aqualina	Press Box
Individual Music	Angie Mefford	Field
Ensemble Visual	Joe Keays	Press Box
Individual Visual	Brad Klemmensen	Field
Color Guard	Paul Simondac	Press Box
Percussion	Bill Simondac	Field

Questions

If you have any questions please contact Darren Myers at ddmyers@mpsomaha.org or (402) 715-8525 or Vince Simodynes at jsimodynes@mpsomaha.org.

NSBA State Marching Band Contest Local News Release

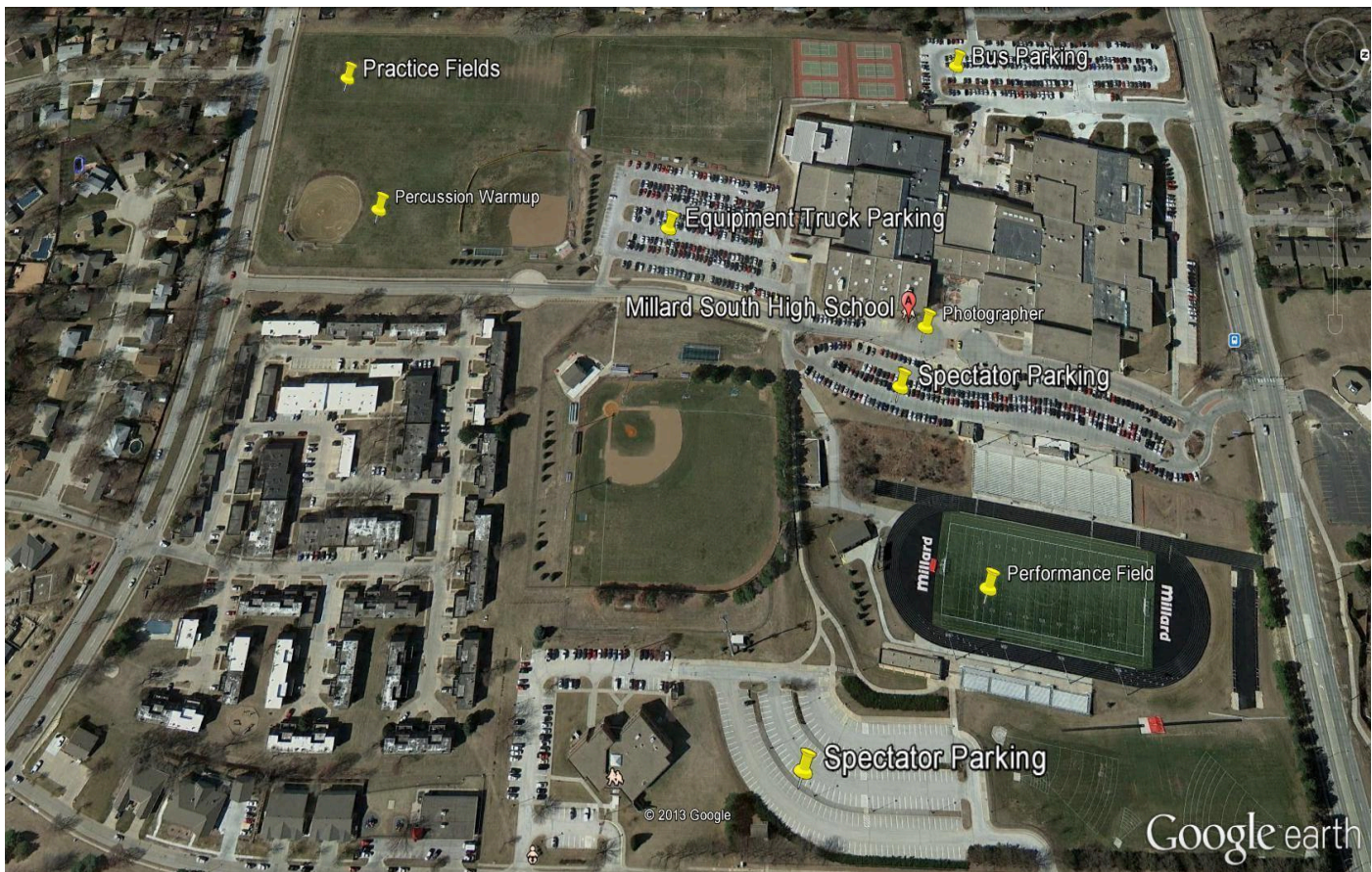
FOR IMMEDIATE RELEASE:

The _____ High School Marching Band will be participating in the Nebraska State Bandmasters Association Marching Band Contest on Saturday, October 22nd. This will be the _____ appearance of the marching band at the NSBA Marching Band Contest. There are _____ members in the _____ High School Marching Band. They will be competing in Class ____ at Buell Stadium on the campus of Millard South High School, 14905 Q St., Omaha, Nebraska.

Admission prices are Adults \$9.00 and Students \$7.00. It promises to be a colorful and exciting event filled with music and pageantry.

The _____ Marching Band is under the direction of _____.

For more information please call _____.



Performance Cycle

Band	Check in	Ready	Warm up	Field	On Deck	Perform
Yutan	12:45	1:15	1:25-1:55	A	2:05	2:15
Omaha Northwest	1:00	1:30	1:40-2:10	B	2:20	2:30
Omaha Buena Vista	1:15	1:45	1:55-2:25	A	2:35	2:45
Omaha Benson	1:30	2:00	2:10-2:40	B	2:50	3:00
Westview	1:45	2:15	2:25-2:55	A	3:05	3:15
						3:30
Gretna East	2:15	2:45	2:55-3:25	A	3:35	3:45
Logan View	2:30	3:00	3:10-3:40	B	3:50	4:00
Skutt Catholic	2:45	3:15	3:25-3:55	A	4:05	4:15
Omaha Burke	3:00	3:30	3:40-4:10	B	4:20	4:30
Omaha North	3:15	3:45	3:55-4:25	A	4:35	4:45
Lincoln Christian	3:30	4:00	4:10-4:40	B	4:50	5:00
						5:15
Elkhorn North	4:00	4:30	4:40-5:10	A	5:20	5:30
Norris	4:15	4:45	4:55-5:25	B	5:35	5:45
Westside	4:30	5:00	5:10-5:40	A	5:50	6:00
Nillard South	4:45	5:15	5:25-5:55	B	6:05	6:15
Elkhorn South	5:00	5:30	5:40-6:10	A	6:20	6:30
Elkhorn	5:15	5:45	5:55-6:25	B	6:35	6:45
						7:30
Bellevue East	6:15	6:45	6:55-7:25	A	7:35	7:45
Millard North	6:30	7:00	7:10-7:40	B	7:50	8:00
Gretna	6:45	7:15	7:25-7:55	A	8:05	8:15
Papio South	7:00	7:30	7:40-8:10	B	8:20	8:30
Millard West	7:15	7:45	7:55-8:25	A	8:35	8:45
Bellevue West	7:30	8:00	8:10-8:40	B	8:50	9:00
Awards						9:30

Nebraska State Bandmasters Association
State Marching Band Contest
Competition Site - Buell Stadium
October 22nd, 2022
Percussion Cycle

1. See Attached Map! There will be 4 designated percussion warm-up areas. This will allow each group to have a **10 Minute** preset for your percussion warm up so that your time can be utilized effectively. ***No playing prior to your pre-set time to be courteous to other groups in the warmup area.***
2. You must adhere to the times provided in the schedule. This facilitates only **2** units warming up at any given time. You must begin and end on time. If you need longer than 30 minutes to warm up your percussion section, warm up at your home school or Walnut Grove Park, which is northwest of Millard South. ***Please face away from the stadium at all times.***
3. **The Entire Campus is a “No Play Zone.”** You can only play in the designated areas which will be clearly marked. This **includes** the undesignated areas in the South Fields.
4. Any deviations from these instructions will be reported to the onsite NSBA Representative.
5. **New This Year!!** : In an attempt to acknowledge concerns from previous contests, we have decreased the Pit Staging time on deck to 20 minutes prior to the performance time. This will mean strict adherence to the Percussion Warmup Schedule.

Thank you for your cooperation.

Nebraska State Bandmasters Association
State Marching Band Contest
Competition Site - Buell Stadium
October 21st, 2023
Percussion Cycle

Band	Warmup Area	Pit Warm-up	Pit Staging	Perform
Yutan	A	1:10-1:40	1:55	2:15
Omaha Northwest	D	1:20-1:50	2:10	2:30
Omaha Buena Vista	B	1:35-2:05	2:25	2:45
Omaha Benson	C	1:50-2:20	2:40	3:00
Omaha Westview	A	1:55-2:25	2:45	3:15
Break		2:20-2:50	3:10	3:30
Gretna East	D	2:35-3:05	3:25	3:45
Logan View	B	2:50-3:20	3:40	4:00
Skutt Catholic	C	3:05-3:35	3:55	4:15
Omaha Burke	A	3:20-3:50	4:10	4:30
Omaha North	D	3:35-4:05	4:25	4:45
Lincoln Christian	B	3:40-4:10	4:30	5:00
Break		4:05-4:35	4:55	5:15
Elkhorn North	C	4:20-4:50	5:10	5:30
Norris	A	4:35-5:05	5:25	5:45
Westside	D	4:50-5:20	5:40	6:00
Millard South	B	5:05-5:35	5:55	6:15
Elkhorn South	C	5:20-5:50	6:10	6:30
Elkhorn	A	6:10-6:40	7:00	6:45
Break		6:20-6:50	7:10	7:30
Bellevue East	D	6:35-7:05	7:25	7:45
Millard North	B	6:50-7:20	7:40	8:00
Gretna	C	7:05-7:35	7:55	8:15
Papio South	A	7:20-7:50	8:10	8:30
Millard West	D	7:35-8:05	8:25	8:45
Bellevue West	B	7:50-8:20	8:40	9:00

