

Monochrome for simplicity.

Single minded idea, sparse use of text

Fusing two different visual ideas by looking at their similarities.

3D layering of elements creates depth.



**Older, retro feeling by:** using particular fonts, colors, and old timey pictures

-> typewriter font with a slight grunge.

URL's for these types of fonts:

<https://www.dafont.com/theme.php?cat=113>

<https://www.1001fonts.com/typewriter-fonts.html>

<https://www.creativeblog.com/typography/free-typewriter-fonts-1131774>

<https://elements.envato.com/hard-stones-family-LHBQSE>

## Readymade

= a visual concept that already exists.

→ They want to make it look like a scrapbook.

F.E. The pictures and the font that is used on the left page.

## After readymade

Marked text intro → lead

Drop cap (in InDesign → paragraph settings)

Tutorial drop cap: <https://www.youtube.com/watch?v=rPrkiEQbczM>

[Do a Drop Cap in InDesign \(wondershare.com\)](https://www.wondershare.com/Do-a-Drop-Cap-in-InDesign)

Border around the content, so that some things stand out

Arrow on the bottom right page to show the article isn't done

On the bottom of the article: name of the magazine, not only the page number → core subject?

Border between text, text divided in columns → to break up text blocks

4+ fonts, how to make it work:  
change between serif and sans-serif font

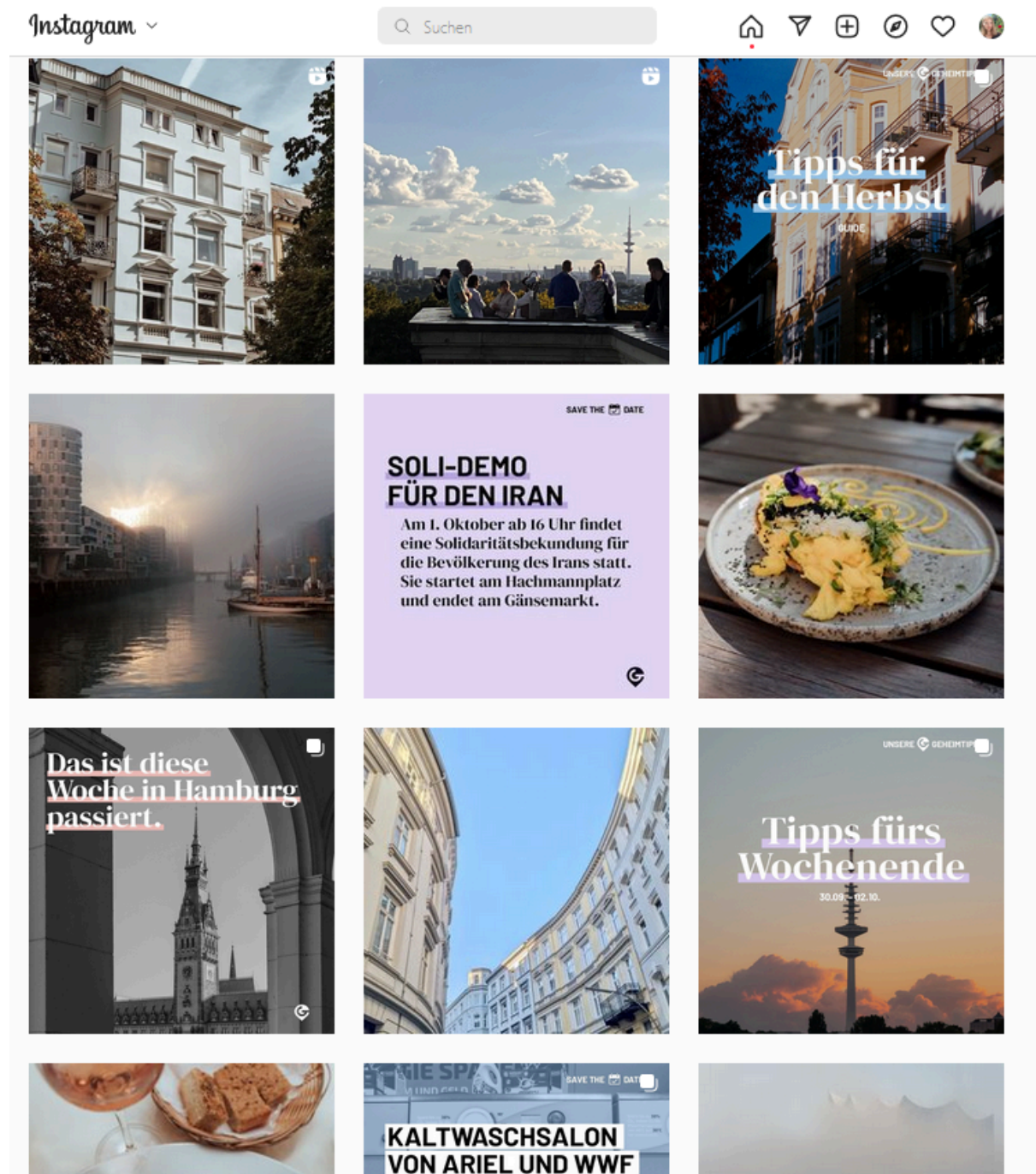


DE is in reverse

Words are broken up but because they have different colours it's readable

Gradient background reversed with the words

Letters stand out (broken into 3 or 4)



There's a format for the content → tips always in same font, but variation by different picture and different colour underline  
 coherent colour scheme: pastel colours, also reflected in the photographs  
 Alternate between pictures and text  
 When there's text on the picture, not more than 3 of 4 elements



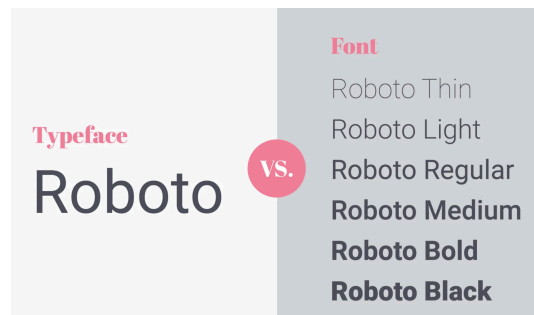
picture goes along the whole spread+

On the right side: tabs with different categories

Box with additional information that's related to the subject = text box?

Credit placement

Difference typeface and a font: here : 2 families



Wrapping text around picture → "text wrap" in InDesign

Background is a colour.

Text box has a different colour → to show it isn't the main story/ facts



Too much white space underneath picture + red quote  
indicate a paragraph by starting the next sentence a bit further from column