



# Jupiter Perpetuals

User Feedback

**By Princess Kemi (@Variant)**

## Content

### Issues & Suggested Improvements for Jupiter Perps

Flow #1: Short ETH by paying SOL using 10x leverage

Flow #2: Change slippage to 3%

Flow #3: Use the Chart:

Flow #4: Add Stop Loss and Take Profit Prices To Your Order

Flow #5: Add more collateral to your position by depositing USDC

Flow #6: Withdraw 25% of the collateral in SOL

Flow #7: Close 50% of your position

Flow #8: Close the rest of your position, and analyse the overall P&L

Other flows/aspects of the Jupiter Perps

### Feature Requests/Ideas

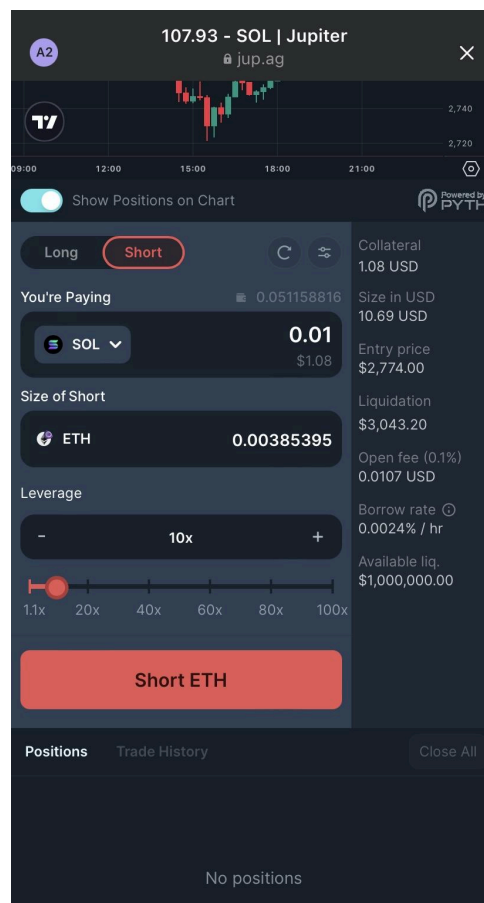
## THE FEEDBACK

In my use of the product, I was able to use it on two devices (mobile device and desktop) in order to get different perspectives. I will be showing images/screenshots taken from using both.

## Issues & Suggested Improvements for Jupiter Perps

### Flow #1: Short ETH by paying SOL using 10x leverage.

- I was able to access the [jup.ag/perps](https://jup.ag/perps) site easily and without any hassle.
- After getting my account funded to make my trade, I was able to easily navigate the site, and was able to change the option from "SOL-PERP" to "ETH-PERP"
- I proceeded to create my position by shorting ETH using 10x leverage as seen in the image below.

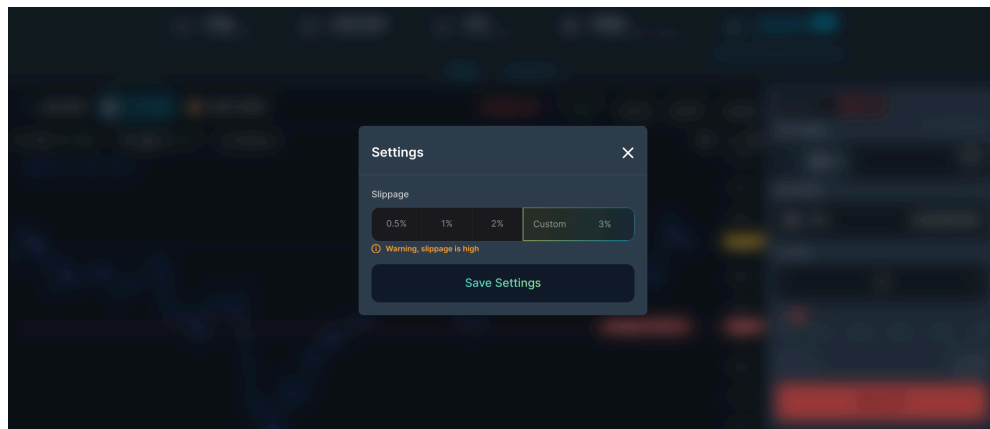


1. **Issue 1:** For a first time user and a newbie, one might not really know that they're to switch from "SOL-PERP" to "ETH-PERP" when trying to short ETH by paying SOL.



## Flow #2: Change slippage to 3%

- I then proceeded to change and customize the slippage to 3%.

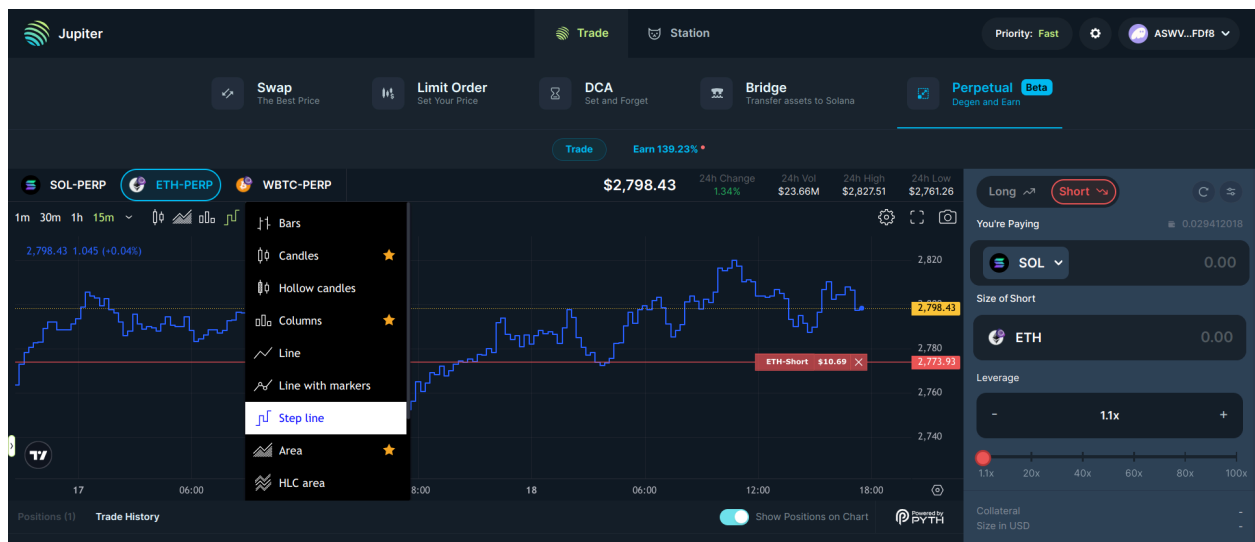


1. **Issue 1:** I found it a little bit challenging to locate the icon for the 'slippage' settings on both mobile and desktop devices, as there are different settings icons that appear on different parts of the screen. At some point I had to search the internet just so I could locate it.

## Flow #3: Use the Chart:

### 4.1 Change the Bar style to Step Line

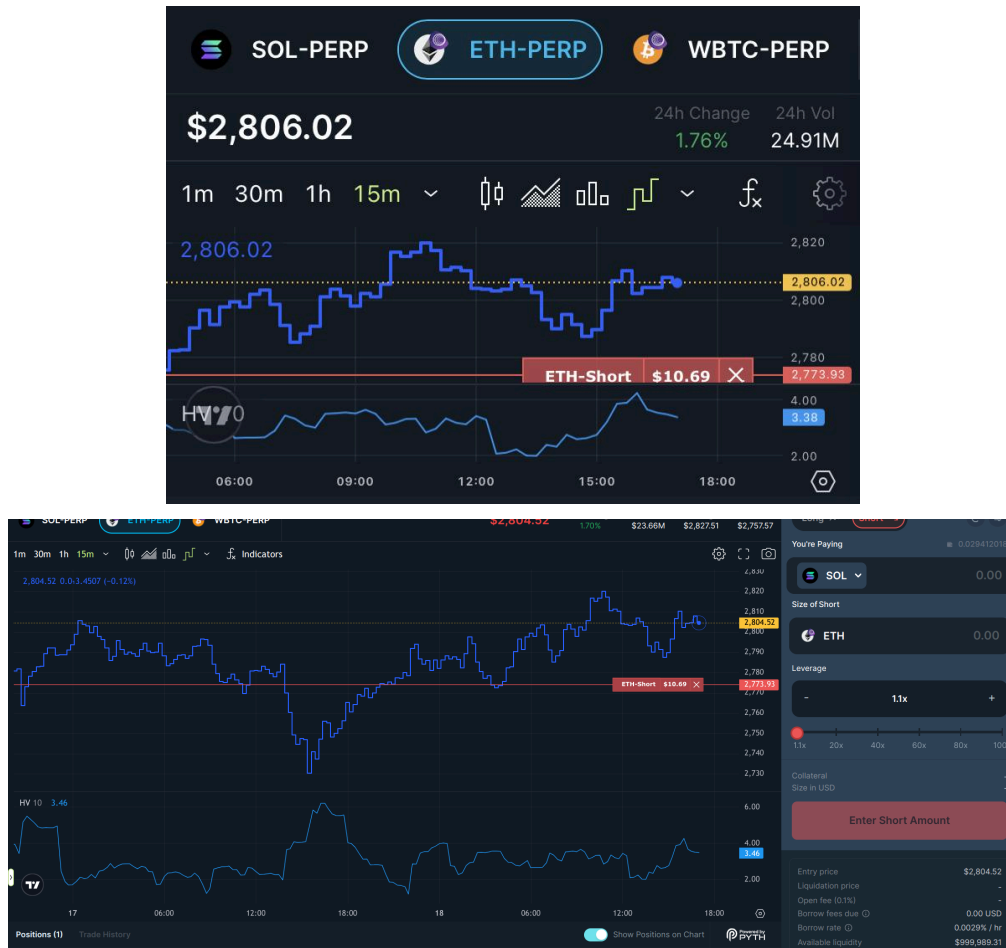
- Proceeding to the next step, which is to change the bar style to Step Line. It was easy to scroll through to search for it on the desktop, having clicked on the dropdown icon for the bar styles. It wasn't so easy to select on mobile device.



### 4.2 Add a Chart Template

### 4.3 Add an Indicator for Historical Volatility

Below are screenshots taken after adding an indicator for Historical Volatility.



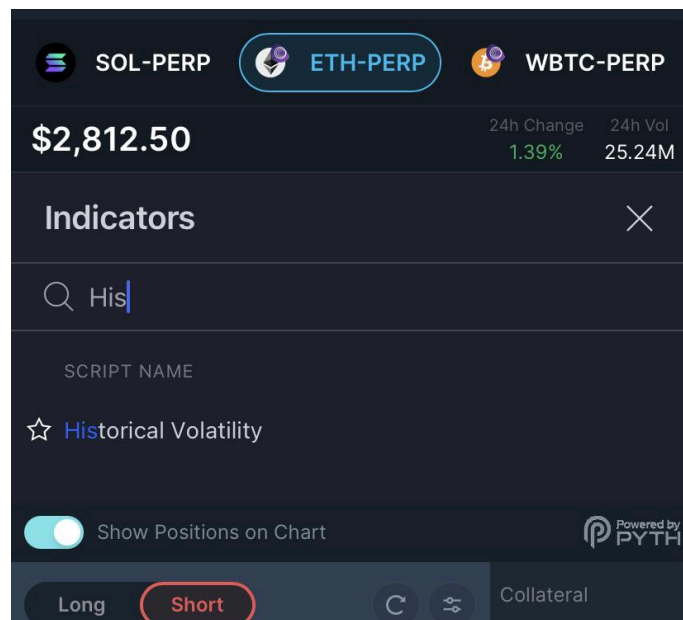
1. **Issue 1:** The image below is a screenshot taken while using the product on a mobile device. The issue here is that the box for scrolling through the options of the Bar Style is a little bit small, and as a result didn't give me a great experience while using it for just this particular stage.

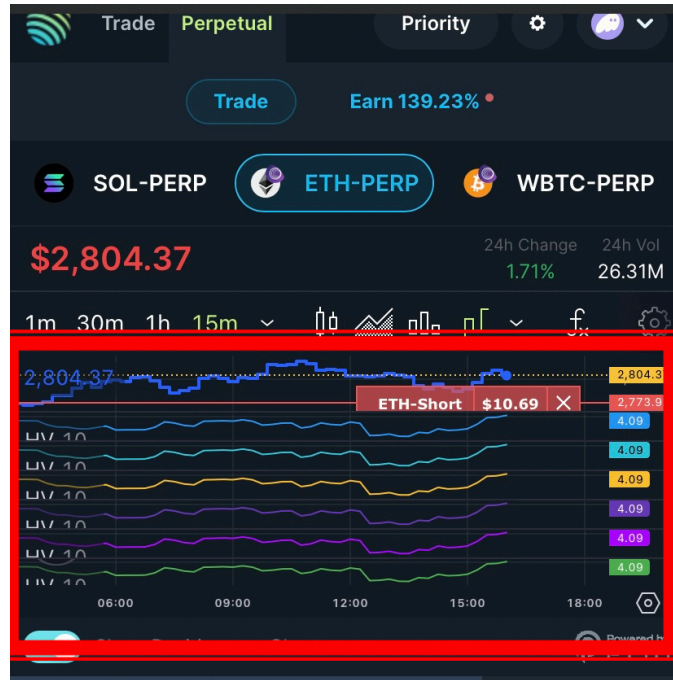


2. **Issue 2:** On mobile devices there is only an icon for “indicators”, unlike for the web device where you get to see the “indicators” beside the icon representing what it stands for. It was a bit challenging to locate the icon quickly.



3. **Issue 3:** After clicking the Historical Volatility option, I had no idea that an action had already been taken based on what I clicked. So I kept on clicking thinking nothing was being done, not until I closed the modal and realized that I had already clicked the same thing more than once. Below is an image of what I mean.





#### Flow #4: Add Stop Loss and Take Profit Prices To Your Order

- In adding Stop Loss and Take Profit Prices, I didn't encounter any issue with it. I added my prices successfully without any issue in the UI or UX of that part. I was able to confirm my transaction and the transaction was processed speedily even before I blinked.

#### Flow #5: Add more collateral to your position by depositing USDC

- Upon adding more collateral to my position, I also didn't encounter any issue, both on mobile and desktop devices. The transaction was swift and easy to do without any form of complication.

#### Flow #6: Withdraw 25% of the collateral in SOL

- Having gotten to the part where I withdraw a certain percentage of my collateral in SOL, I was met with a little issue.

1. **Issue 1:** The issue is that I didn't get to see an option where I could select the percentage I wanted to withdraw without having to do the calculations manually. It was a bit tasky for me to get the exact 25%.

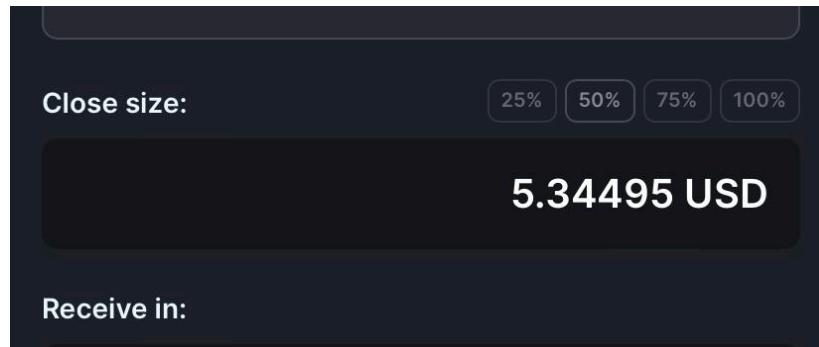
The screenshot shows a dark-themed 'Edit Collateral' modal. At the top, it says 'Edit Collateral' with a close button. Below is a box for 'Current Position Size' showing '\$10.69'. There are two tabs: 'Deposit' and 'Withdraw', with 'Withdraw' being the active tab. Under the 'Withdraw' tab, 'Position Value' is shown as '-\$0.18 (-8.61%)'. Below that is a large input field for the withdrawal amount, currently showing '1.87 USD'. Underneath the input field, it says 'Withdraw collateral in:' followed by 'Max: 1.7573 USD'. Below this is a dropdown menu for the asset, currently set to 'SOL' with a dropdown arrow. To the right of the dropdown, the withdrawal amount is shown as '0.46 USD' and '0.004038921 SOL'. Below the dropdown, there is a small icon and the text '0.029412018 SOL'. At the bottom, there are two buttons: 'Cancel' and 'Withdraw'.

Field	Value
Current Position Size	\$10.69
Position Value	-\$0.18 (-8.61%)
Withdrawal Amount (USD)	1.87 USD
Max Withdrawal (USD)	1.7573 USD
Asset	SOL
Withdrawal Amount (SOL)	0.004038921 SOL
Collateral (SOL)	0.029412018 SOL
Leverage	5.18x → 6.66x
Liq. Price	\$3,301.00 → \$3,181.63
Collateral	\$2.06 → \$1.60

## Flow #7: Close 50% of your position

- On getting to this stage, I was glad when I got to see the feature of me selecting the particular percentage I wanted to work with. And with that I didn't encounter any issue in interacting with that aspect of the product.





**Flow #8:** Close the rest of your position, and analyse the overall P&L

- What a great trading experience! I successfully completed all that needed to be done, and I ended my trading with closing the rest of my remaining 50% position.
- On analysing my overall P&L, it was seen that at a point in the trade I lost about \$0.07(-8.14%) of my collateral.

## Other flows/aspects of the Jupiter Perps

The other flows/aspects of the Jupiter Perps were smooth and responding fast, and the features work great both on mobile and desktop devices.

## Feature Requests/Ideas

*What feature requests or ideas would you like to suggest to the Jupiter team?*

Feature Request 1: I would suggest that an information icon is added by each side of the tabs of "SOL-PERP" "ETH-PERP" and "WBTC-PERP", so as to indicate what each means for the sake of new users.

Feature Request 2: For adding an 'indicator' to the chart, I would suggest that there be in place a modal that pops up from any part of the screen indicating that a particular 'indicator' has been selected, so as to avoid one selecting multiple times without knowledge.

Feature Request 3: I would also suggest that an option for different sizes of percentage be added to the 'withdrawal' of the collateral tab/modal, so as to make the transaction process easier and faster. It would be also great if the options can be customized to fit one's preferences.