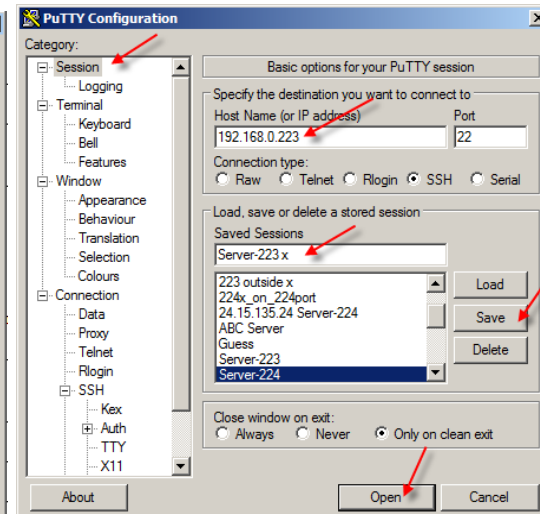
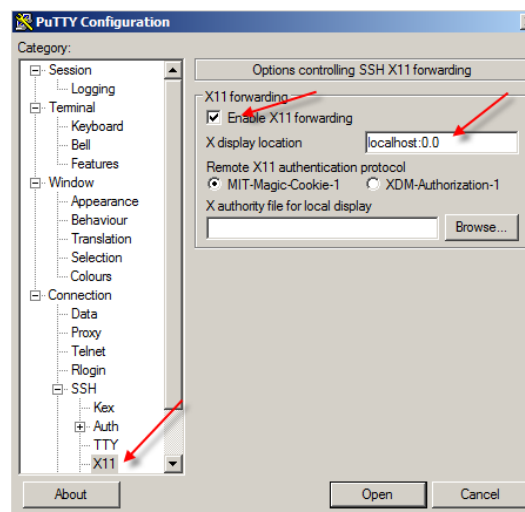
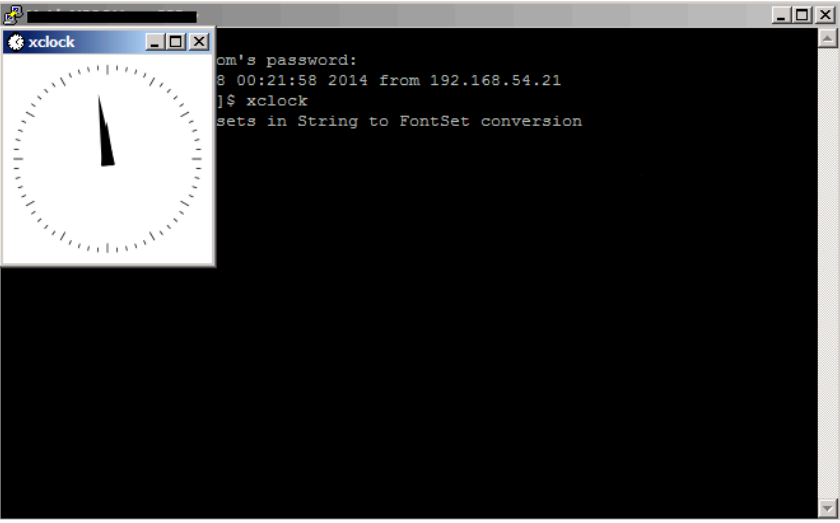
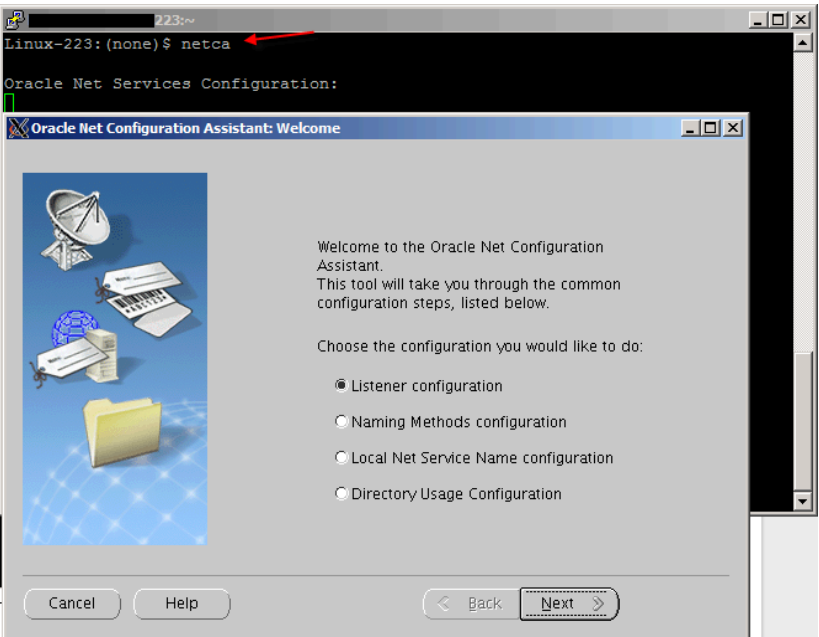


## How to start GUI (dbca, netca etc) from your laptop using XMING? --Moid

| Step | Description                   | Commands / Comments / Screenshot  |
|------|-------------------------------|---|
| 1    | Download xming                | As of 12/18/14, xming can be downloaded from <a href="http://sourceforge.net/projects/xming/files/latest/download">http://sourceforge.net/projects/xming/files/latest/download</a>  |
| 2.   | Install Xming                 | <p>I see it had downloaded Xming-6-9-0-31-setup.exe.</p> <p>Right click on it and select “Run as Administrator” option to start installing.</p> <p>I just installed it with all the default setting. You may want to change some settings.</p>  |
| 3.   | Start putty with x-11 enabled | <p>Open putty</p> <ul style="list-style-type: none"> <li>Expand [Connection] <ul style="list-style-type: none"> <li>Click on [X11]</li> <li>Check the checkbox where it says [Enable X11 forwarding]</li> <li>For X display location type, localhost:0.0</li> </ul> </li> <li>From the left window, scroll up and click [Session] <ul style="list-style-type: none"> <li>In the hostname, type hostname or IP Address of your server you want to connect to</li> <li>In the [Saved Sessions], give a name. I usually end a name with “X”</li> <li>Click [Save] to save the session</li> <li>Click [Open] to open</li> </ul> </li> </ul> |



|           |  |   |
|-----------|--|---|
| <p>4</p>  | <p>Verify xclock is showing</p> <p>Note: If xclock doesn't show, <b>ask UNIX admin</b> (or if you have root password, run the following as root) to run the following command to disable access control.</p> <p><b>xhost +</b></p> <p>When running <b>xhost +</b>, UNIX Kernel <i>disables access control</i> and users can now start GUI.</p> | <p>type <b>xclock</b></p>                       |
| <p>5</p>  | <p>switch user to oracle</p>   | <p>su - oracle</p>  |
| <p>6.</p> | <p>Start GUI</p>   | <p>In this example, my GUI tool is netca.</p>  |

7

If you want to start GUI from other server, then do the following.

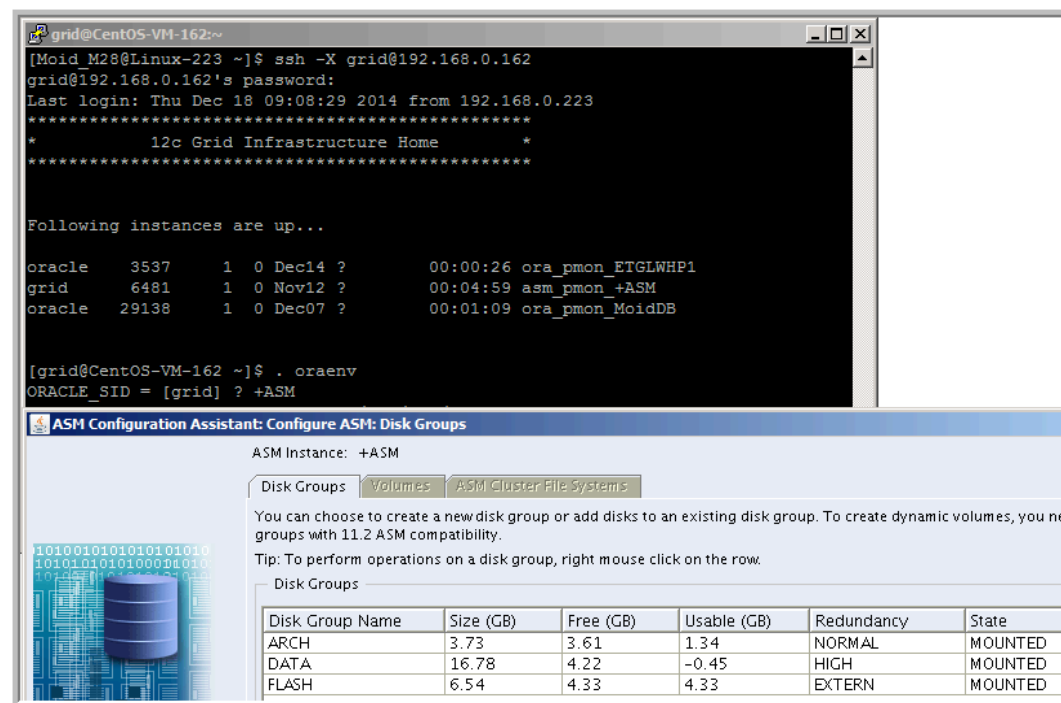
For example,

Your RDP Server is 192.168.0.223 and your ASM server is 192.168.0.162 and your task is to start ASMCA, then do the following while still connected to 192.168.0.223

```
ssh -X grid@192.168.0.162
```

```
. oraenv → +ASM
```

```
asmca
```



Hope this helps.

**Moid Muhammad**