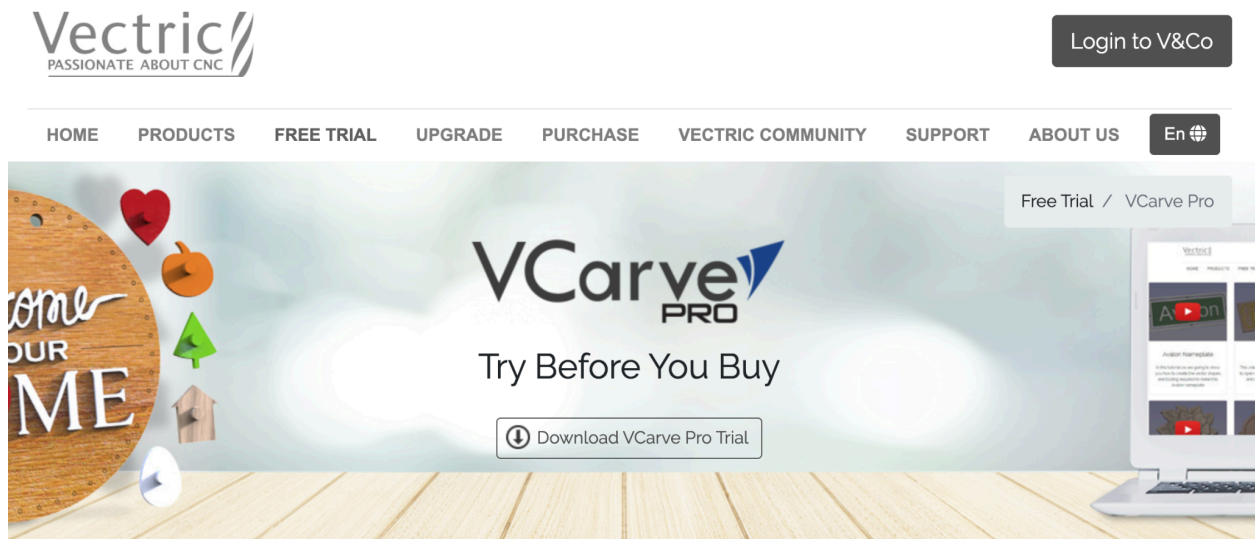
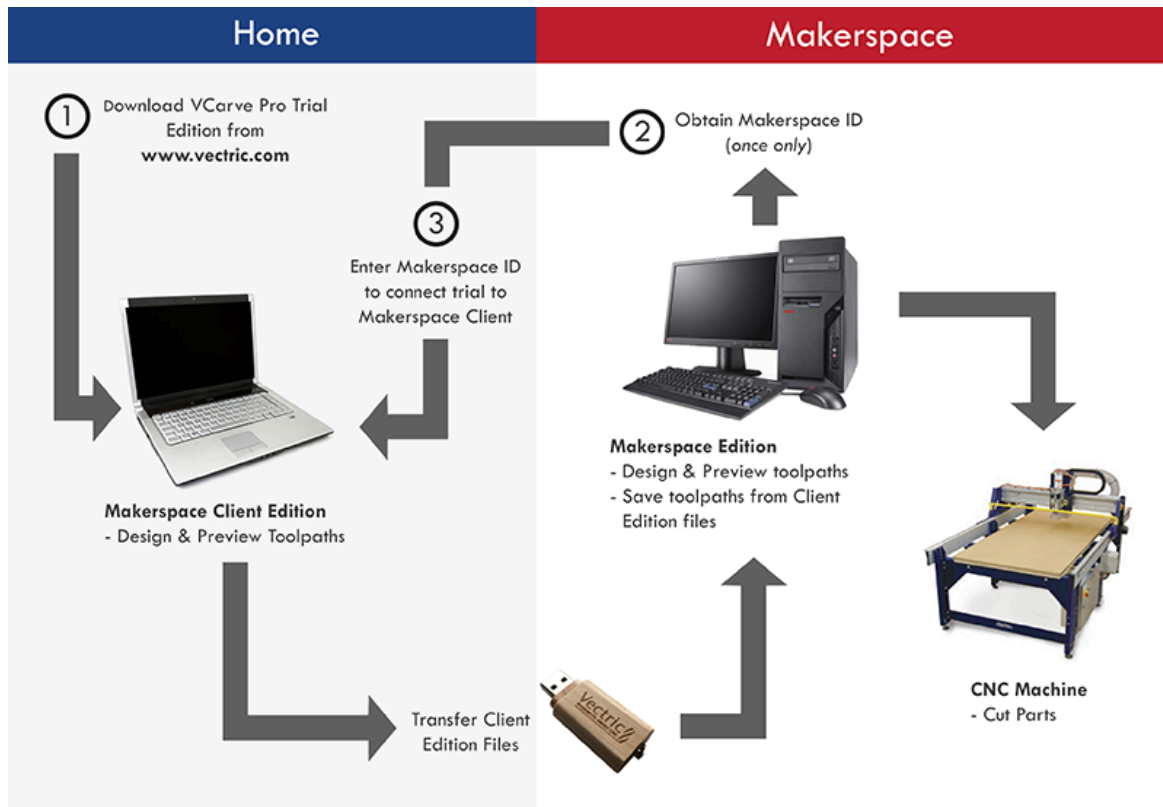


Where do I get vCarve MakerSpace Edition?

Download the vCarve trial from vectric: <https://www.vectric.com/free-trial/vcarve-pro>

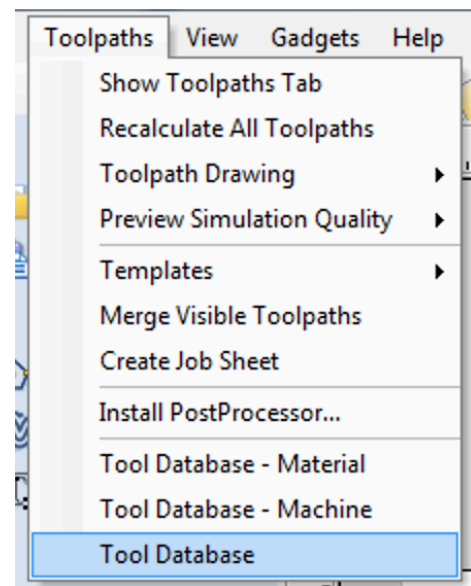
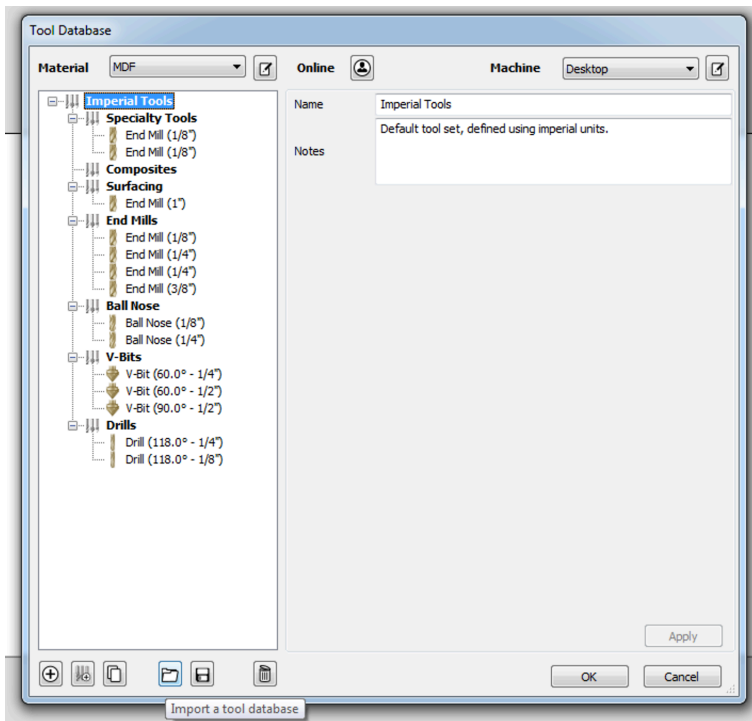
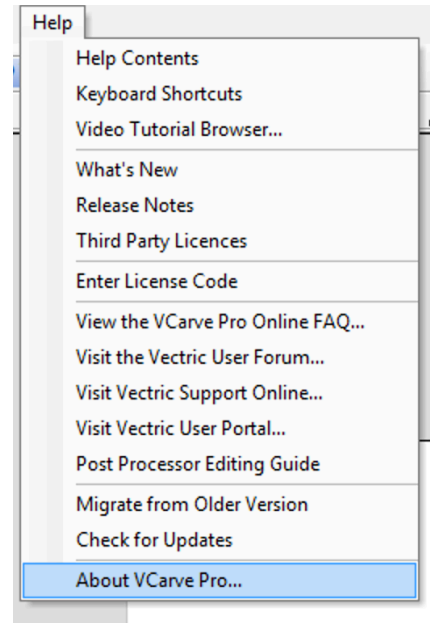


How does vCarve MakerSpace Edition work? See this handy guide from Vectric Software.



Adding vCarve MakerSpace ID, Tool Database, and Post Processor:

- **Makerspace ID**
 - Help->About->MakerSpace ID
 - Enter Makerspace ID
 - Your software is now activated.
- **Tool Database and Post Processor**
 - Create a new project
 - Toolpaths->Tool Database->Import a Tool Database
 - Toolpaths->Install PostProcessor



Basic Job/WCS (Work Coordinate System) Setup

Job Type: Single Sided, Double Sided or Rotary machining. For most jobs, leave this at single sided. Narwhal Labs is not currently equipped with a rotary axis.

Job Size: The dimensions of your stock material. For an average sheet of plywood, this might be: Width - 48 inches, Height - 96 inches, Thickness, .75 inches.


Keep in mind that materials are not necessarily the size or thickness advertised. 18mm or $\frac{3}{4}$ baltic birch is about .72" thick. Many MDF sheets are an extra inch wider. Always measure your material first, and account for tolerances.

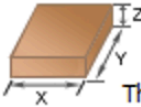
Z Zero Position: Do you want to reference the bit off of your material surface, or the machine bed? It's recommended to reference off of the surface for engraving and any cuts that do not go through the material completely, particularly when dimensional accuracy is important. Machine bed is recommended for through cuts.


XY Datum Position: Datum is just referring to a number or value. This is where the machine is going to reference off of your stock material for positioning. For two sided machining or non rectangular/square stock, zeroing off the center is recommended. For all other operations the bottom left corner is standard. Do not use an offset for most operations.


Modelling Resolution: This is unimportant and can be left at defaults. This is just a visual effect in vCarve's 3D view.


Job Setup

Job Type

☒ Single Sided
☐ Double Sided
☐ Rotary


Job Size

Width (X): inches
Height (Y): inches
Thickness (Z): inches
Units ☒ inches ☐ mm

Z Zero Position

☐ Material Surface
☒ Machine Bed

XY Datum Position

☐ Use Offset
X:
Y:

Modeling Resolution


1 million points

Appearance


Solid Color: