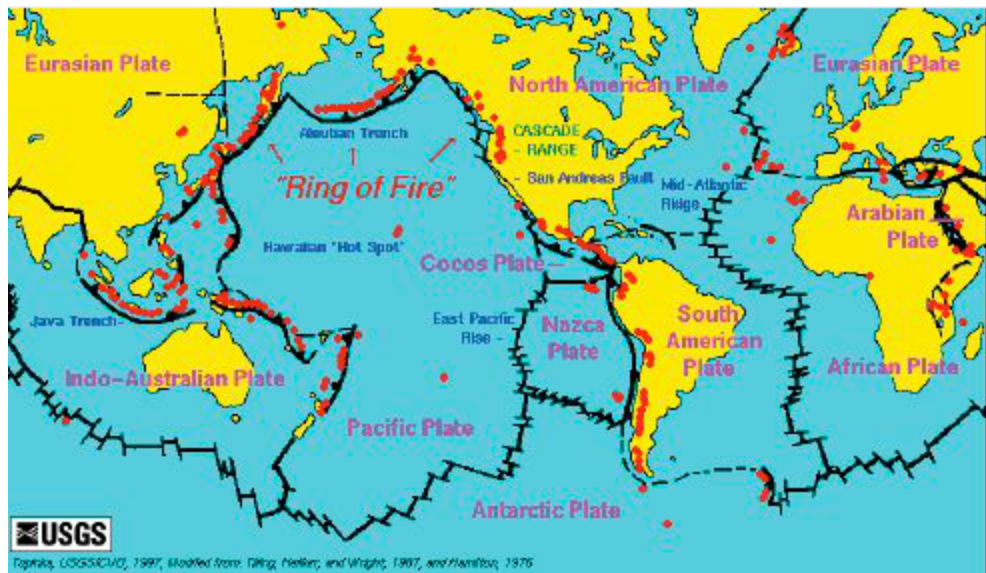


1.2B Review Questions

1. The diagram below identifies the world's



- ☐ Large Igneous Provinces
- ☐ Mountains
- ☐ Continents
- ☐ Crustal plates
- ☐ Ocean basins
- ☐ Sedimentary basins

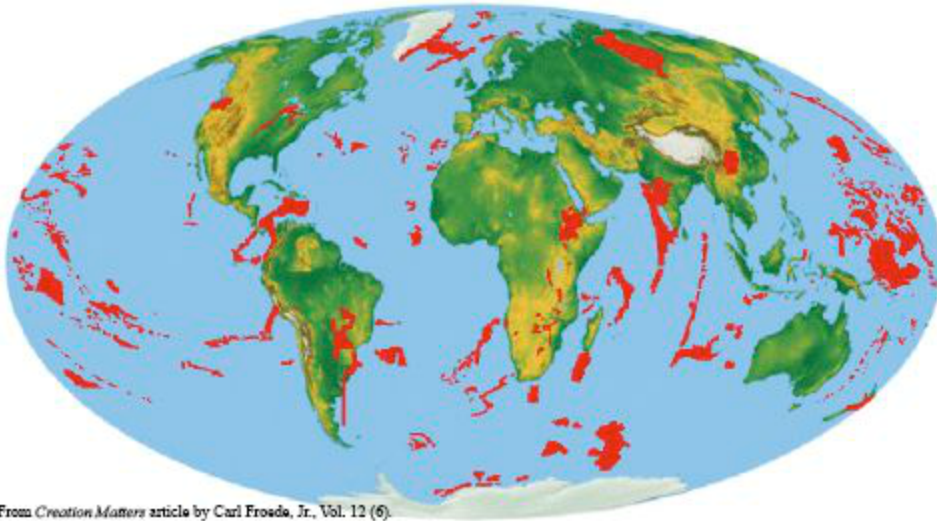
2. Large geologic basins existing below sea level are

- ☐ Continents
- ☐ Ocean basins
- ☐ Mountains
- ☐ Sedimentary basins
- ☐ Large Igneous Provinces
- ☐ Crustal plates

3. Large geologic basins filled with sand, clay, and other deposits are

- ☐ Crustal plates
- ☐ Ocean basins
- ☐ Large Igneous Provinces
- ☐ Sedimentary basins
- ☐ Mountains
- ☐ Continents

4. The red areas on the diagram below represent



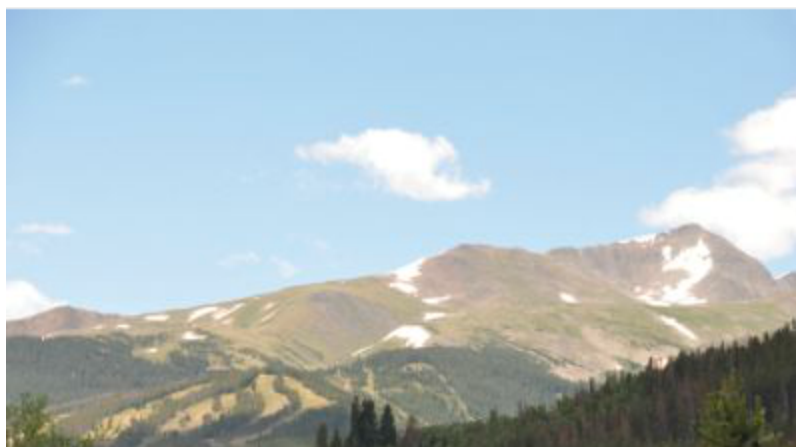
- ☐ Continents
- ☐ Large Igneous Provinces
- ☐ Ocean basins
- ☐ Mountains
- ☐ Sedimentary basins
- ☐ Crustal plates

5. Palo Duro Canyon, shown in the image below, was carved through a



- ☐ Mountains
- ☐ Ocean basins
- ☐ Continents
- ☐ Sedimentary basins
- ☐ Crustal plates
- ☐ Large Igneous Provinces

6. Uplifted areas, like these near Breckenridge, Colorado, are commonly known as



- ☐ Ocean basins
- ☐ Large Igneous Provinces
- ☐ Sedimentary basins
- ☐ Mountains
- ☐ Continents
- ☐ Crustal plates

7. Global cataclysm models for Earth's history replace the long time periods required by uniformitarianism with

- ☐ Short term, high energy events
- ☐ Short time periods
- ☐ Long term, low energy events
- ☐ Even longer time periods

8. According to the diagram below, the global cataclysm described in Genesis began _____ years ago. Round answer to nearest year.

From *Strategic Stratigraphy: Reclaiming the Rock Record* by John K. Reed, TJ 19(2) 2005.

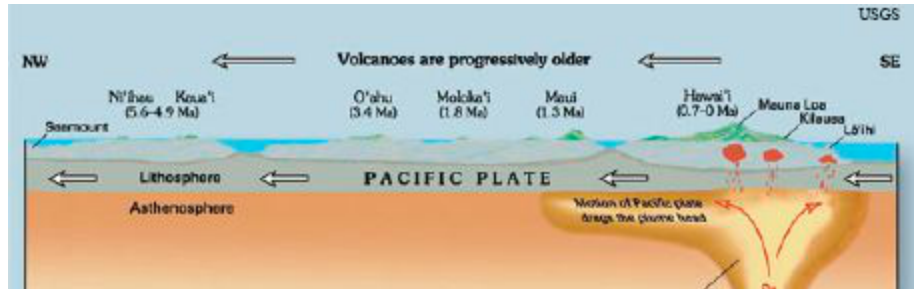
1		2	3		4					
Era	Period	Geologic Energy	Timeframe Division		Event / Era Stage		Duration	Phase		
Cenozoic	Quaternary		Present Age	Upper	Postdiluvian Era		4,000 Y	Modern		
	Middle									
	Lower									
Tertiary	Upper		300 Y	Residual						
	Middle									
	Lower									
Mesozoic	Cretaceous				Flood Event	Upper	The Deluge	Recessive	220 D	Dispersive
	Jurassic									Abative
	Triassic			Inundatory		Zenithic				
Paleozoic	Permian		Middle	110 D		Ascending				
	Pennsylvanian		Lower					40 D	Eruptive	
	Mississippian		Antediluvian Era							1,700 Y
	Devonian		Creation Week	Day 7	The Creation Event	Formative	2 D			Biotic
	Silurian			Day 6			2 D	Derivative		
	Ordovician			Day 5		Foundational	2 D	Ensuing		
	Cambrian			Day 4			2 D	Primordial		
	Vendian			Day 3			2 D	Primordial		
	Proterozoic			Day 2			2 D	Primordial		
	Archaean			Day 1			0 D	Primordial		

Figure 2. Comparison of stratigraphic interpretive frameworks. They include: (1) the uniformitarian stratigraphic column, (2) geologic energy vs time;²² (3) Froede's creationist column;²¹ and (4) Walker's creationist column.²³ Please note that there is no specific correlation between (1) and the other columns, nor is there exact correlation between the various creationist proposals.

9. Many educators erroneously teach that evolution is the unifying theme in biology, while _____ is the unifying theme in geology.

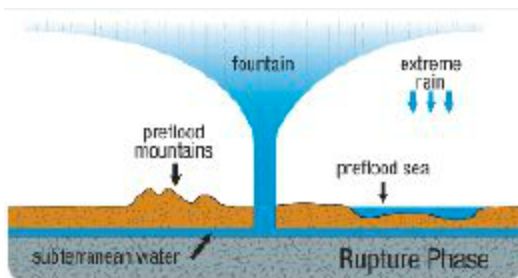
- ☐ Catastrophic Plate Tectonics Theory
- ☐ Vertical Tectonics Theory
- ☐ Plate Tectonics Theory
- ☐ The Hydroplate Theory

10. The Hawaiian hotspots are no longer considered a classic example of



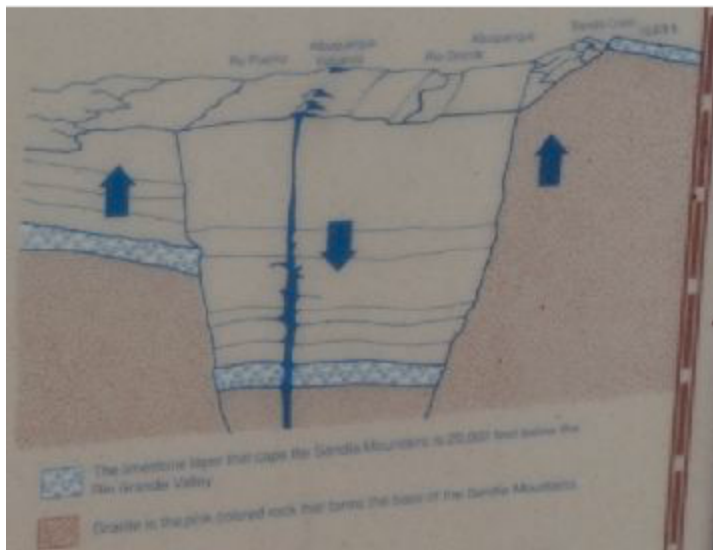
- ☐ Plate Tectonics Theory
- ☐ Catastrophic Plate Tectonics Theory
- ☐ Vertical Tectonics Theory
- ☐ The Hydroplate Theory

11. Subterranean water is a key assumption of



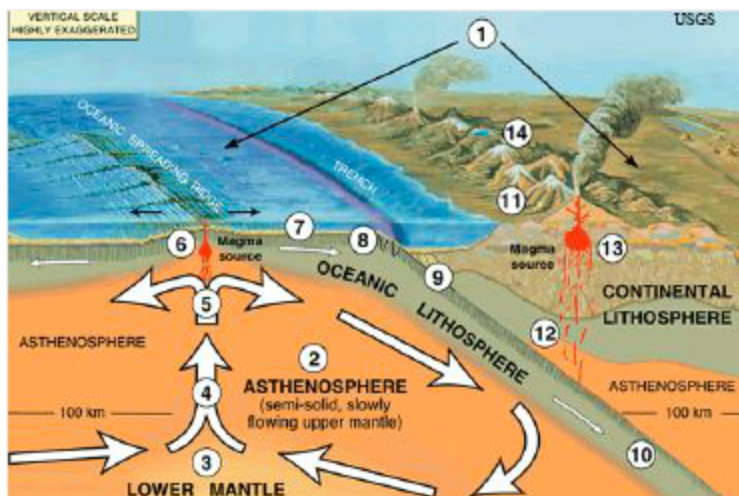
- ☐ Catastrophic Plate Tectonics Theory
- ☐ Plate Tectonics Theory
- ☐ Vertical Tectonics Theory
- ☐ The Hydroplate Theory

12. Sandia Peak and the sedimentary basin to the east are good examples of



- ☐ Catastrophic Plate Tectonics Theory
- ☐ The Hydroplate Theory
- ☐ Plate Tectonics Theory
- ☐ Vertical Tectonics Theory

13. Computer models of runaway subduction were made to speculate about



- ☐ Plate Tectonics Theory
- ☐ The Hydroplate Theory
- ☐ Catastrophic Plate Tectonics Theory
- ☐ Vertical Tectonics Theory

14. The Mississippi River Delta is a good example of Earth's surface being shaped by



- ☐ Deposition
- ☐ Erosion
- ☐ Glaciation

15. Among other things, studying Earth anatomy will help you find evidence supporting the Bible's historical accuracy and rejecting superstitious ideas about Earth's origins and _____.