

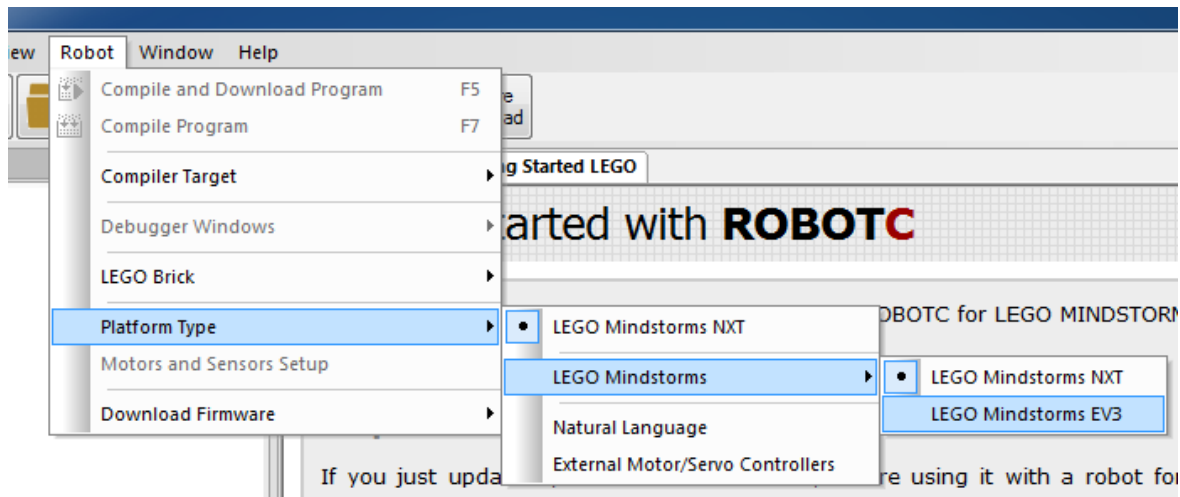
Getting Started with ROBOTC and the LEGO Mindstorms EV3

NOTE: All screenshots and functionality are subject to change during the BETA period.

Step 1: Switch Platform Type to EV3

ROBOTC will launch by default in “NXT” mode. Switching the platform type to “EV3” mode will allow you to program your EV3 brain.

A: To switch platform type, go to the **Robot** menu and select **Platform Type**. From there, select **LEGO Mindstorms** and then choose the **LEGO Mindstorms EV3**

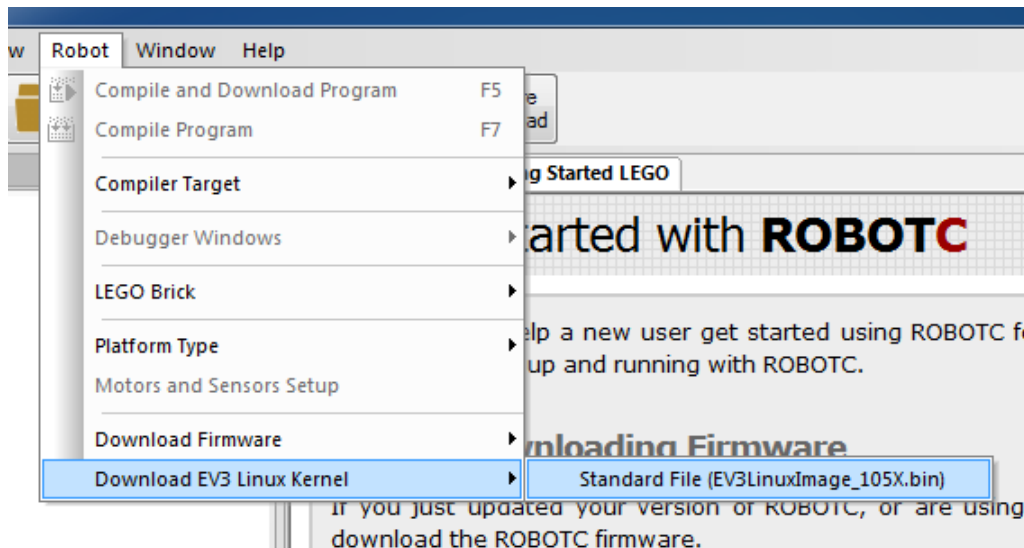


Step 2: Updating EV3 Kernel (Operating System)

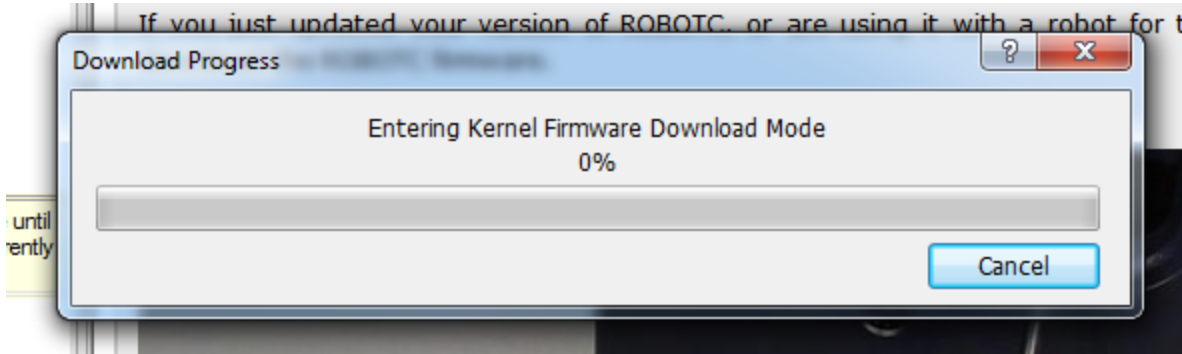
Before you can use your EV3 with ROBOTC, you'll need to upgrade your EV3's Firmware Image. This Firmware Image (1.05X) will be compatible with ROBOTC, LabVIEW and the EV3 Programming Language from LEGO. Firmware downloading takes about 5-6 minutes to complete.

Please note that your EV3 brick must be connected to the computer via USB. This operation is not supported over WiFi or Bluetooth.

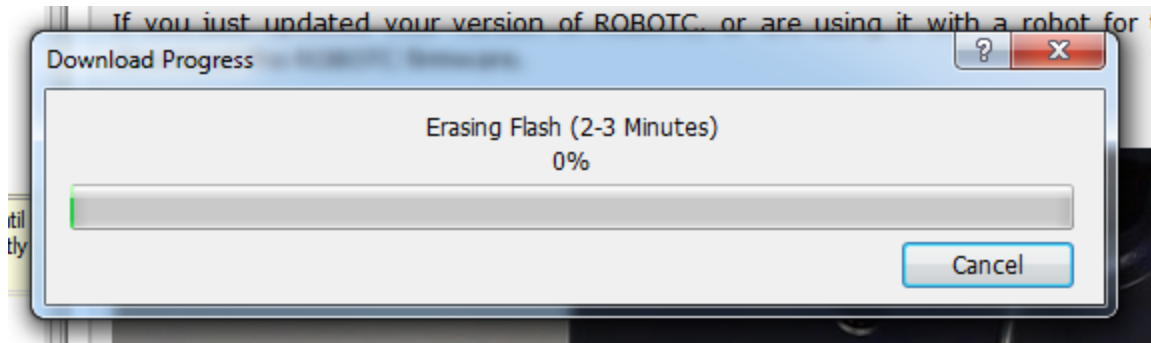
A: Under the **Robot** menu, select the **Download EV3 Linux Kernel** option. Choose the **Standard File** option to begin the firmware upgrade process.



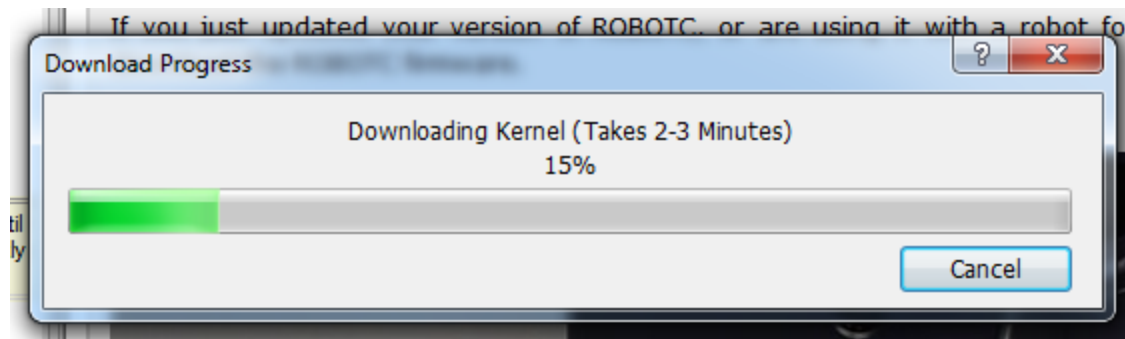
B: The "Entering Kernel Firmware Download Mode" is when the EV3 is switching from "run" mode to "bootload" mode. This may take 5-10 seconds to switch. If you get an error message from this point, simply try the upgrade again and it should be successful.



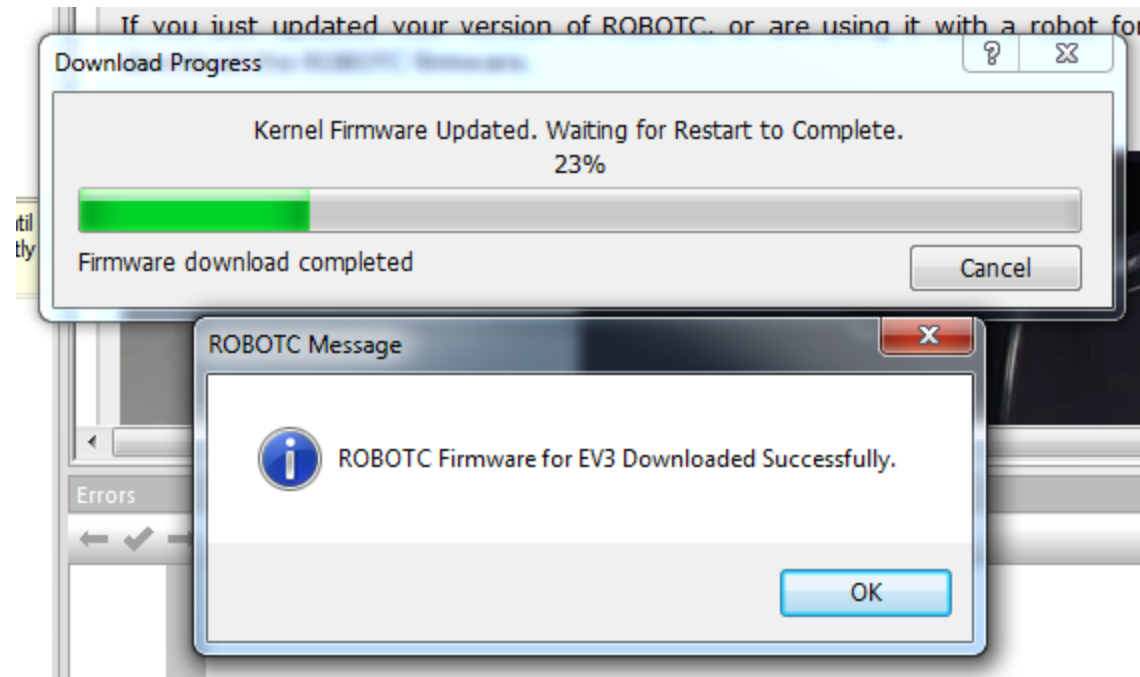
C: The next step is to erase the EV3. This takes about 2-3 minutes.



D: Once the EV3 is erased, the new firmware/kernel is downloaded. This also takes 2-3 minutes.

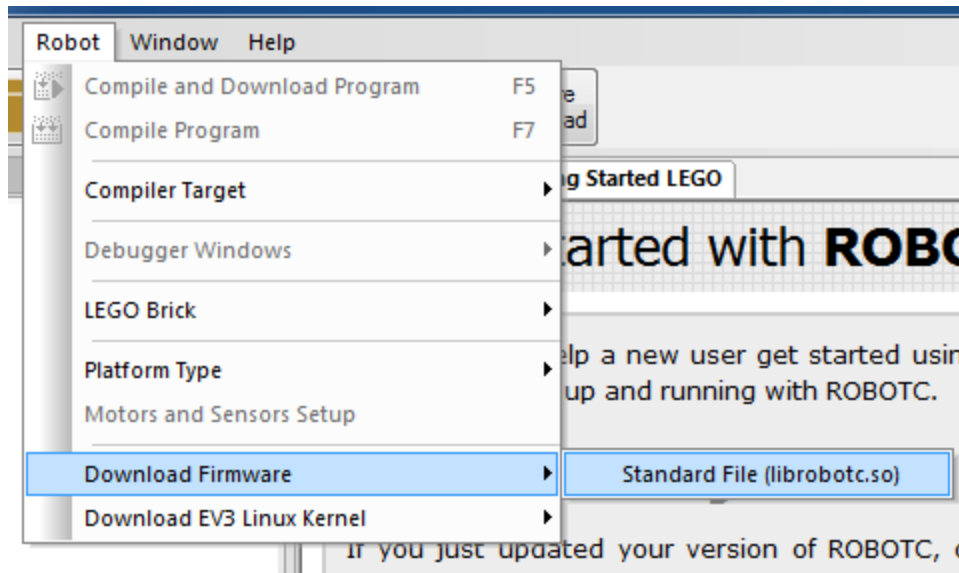


E: Once the firmware is updated, the EV3 will reboot and be ready for use. ROBOTC will report to you when the EV3 has finished booting up.

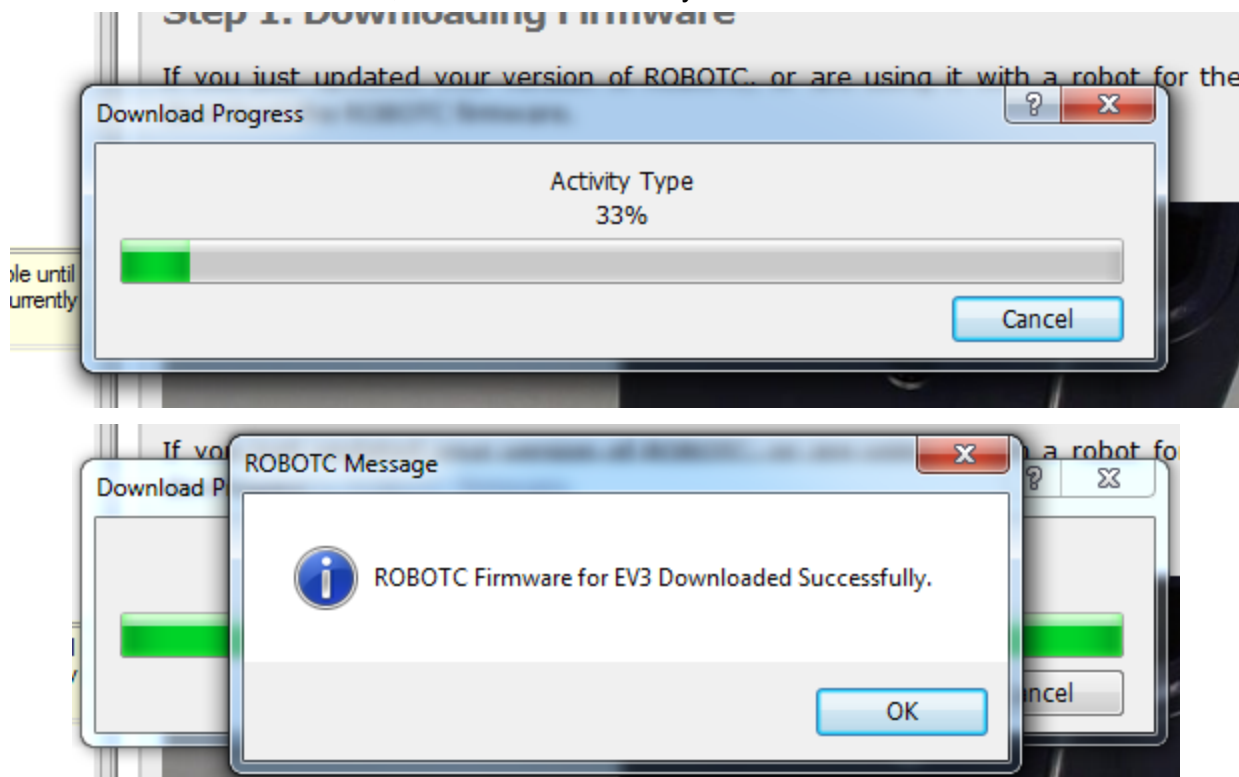


Step 3: Install ROBOTC Firmware

Once the EV3 Firmware/Kernel has been updated, you're ready to install the ROBOTC Virtual Machine (VM) to enable you to program your EV3 with ROBOTC. To install the ROBOTC VM, open the **Robot** menu and select **Download Firmware**. From here, select **Standard File** and the firmware download process will begin.



A: Unlike the Firmware/Kernel, the ROBOTC VM only takes about 5 seconds to install.



Step 4: Start using ROBOTC!

- We have a number of sample programs available under the **File Menu -> Open Sample Programs**