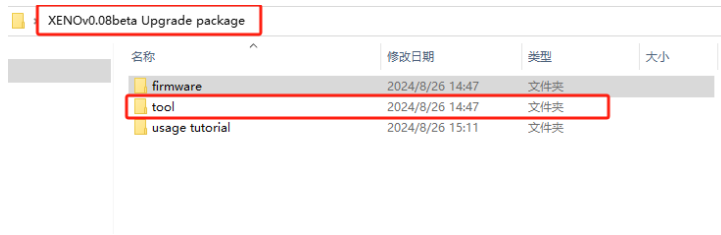
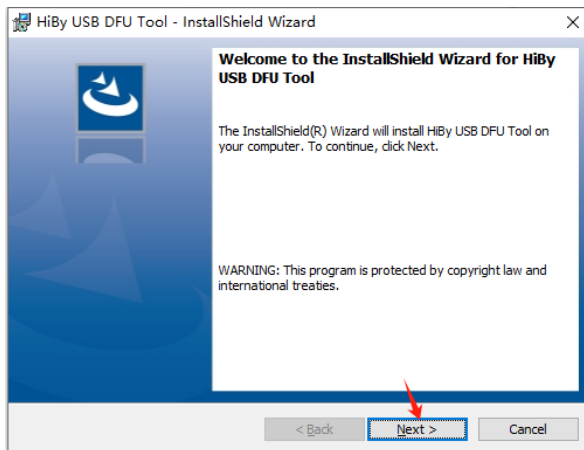
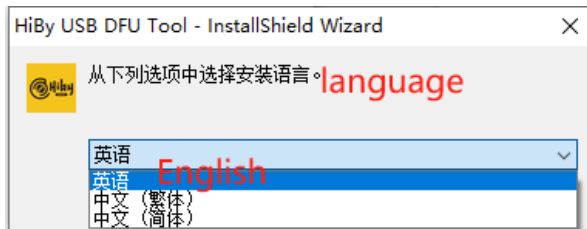
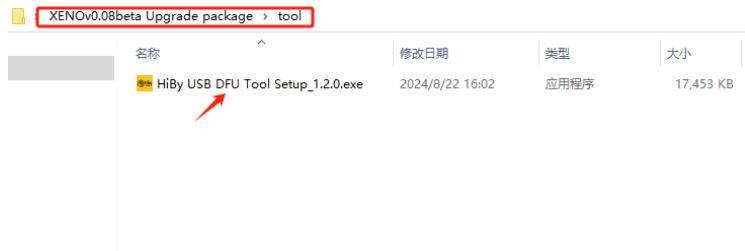


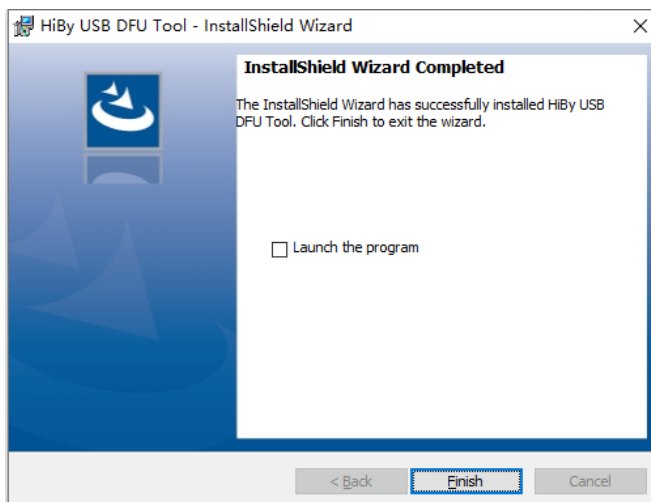
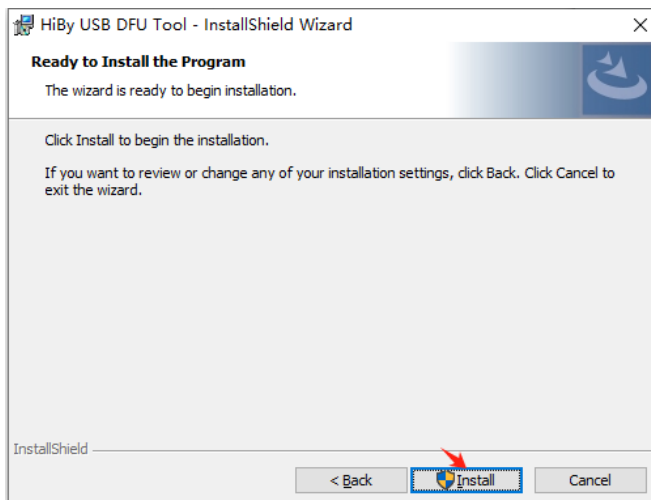
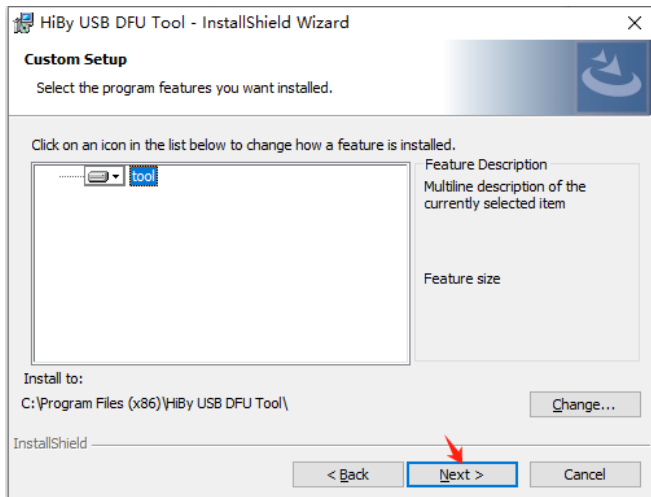
Dfu tool tutorial

1. Proceed with the tool installation

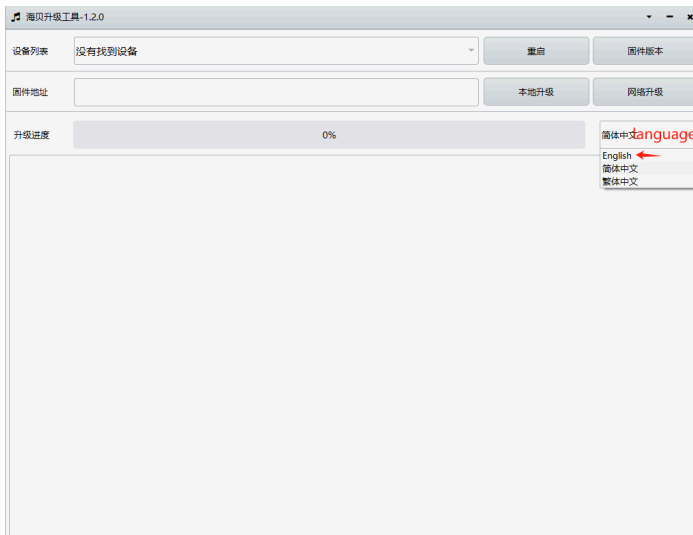


2. Follow the instructions to perform the operation

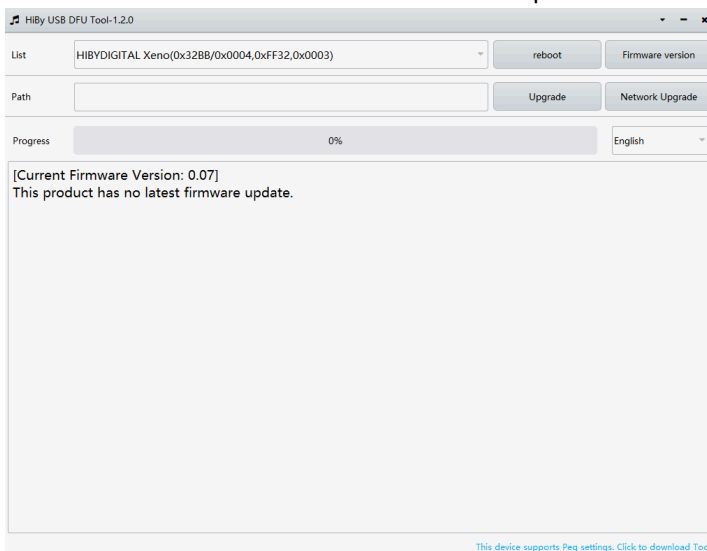




3. Start up the dfu tool



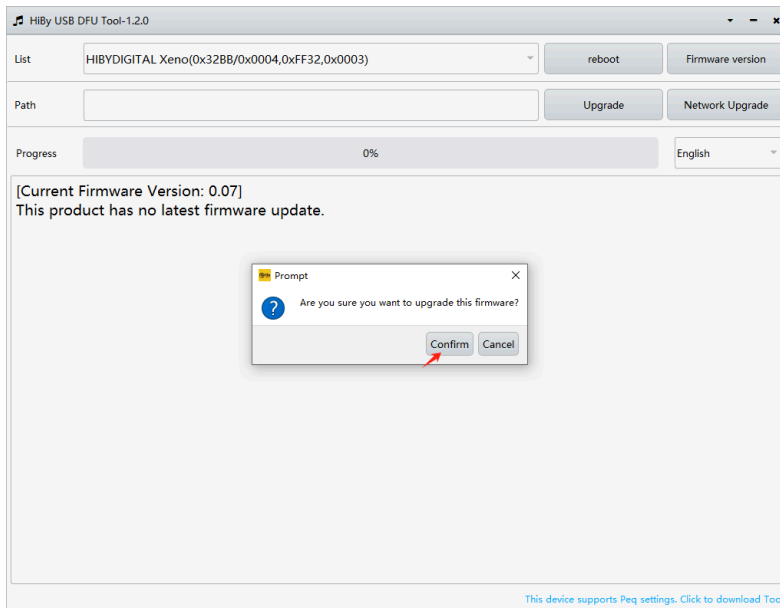
Use USB to connect the PC and the device and power it on



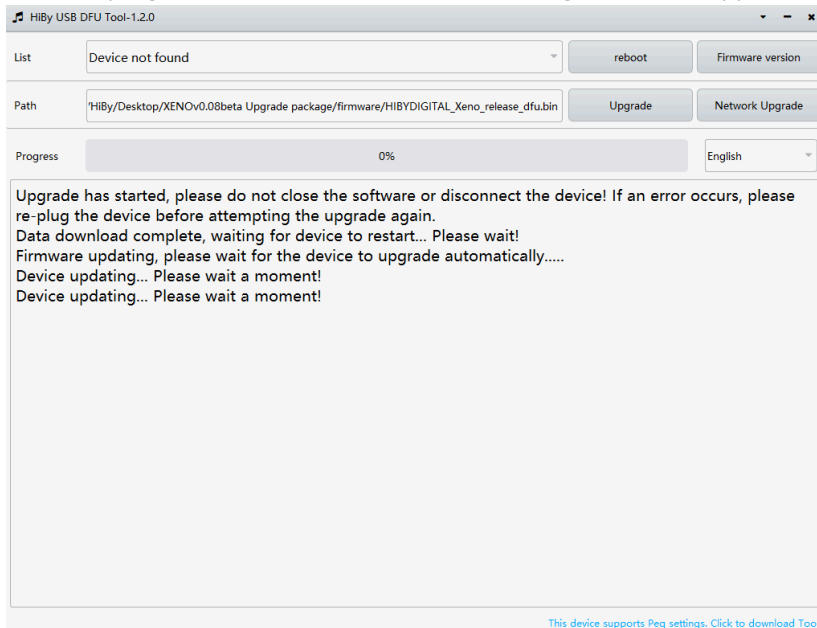
Click "Local Upgrade" and select the upgrade file from the following path



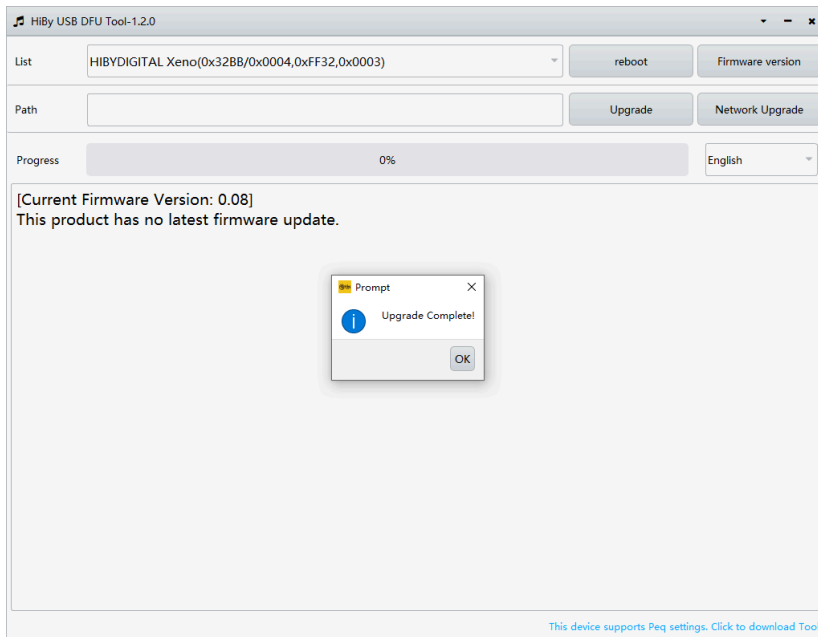
Click "Confirm"



after the progress bar reaches 100%, the following screen will appear" is



Wait a moment



Network upgrade will check if your device firmware matches the latest firmware.

If it does not match, click on network upgrade to proceed.

If it matches, no upgrade is needed