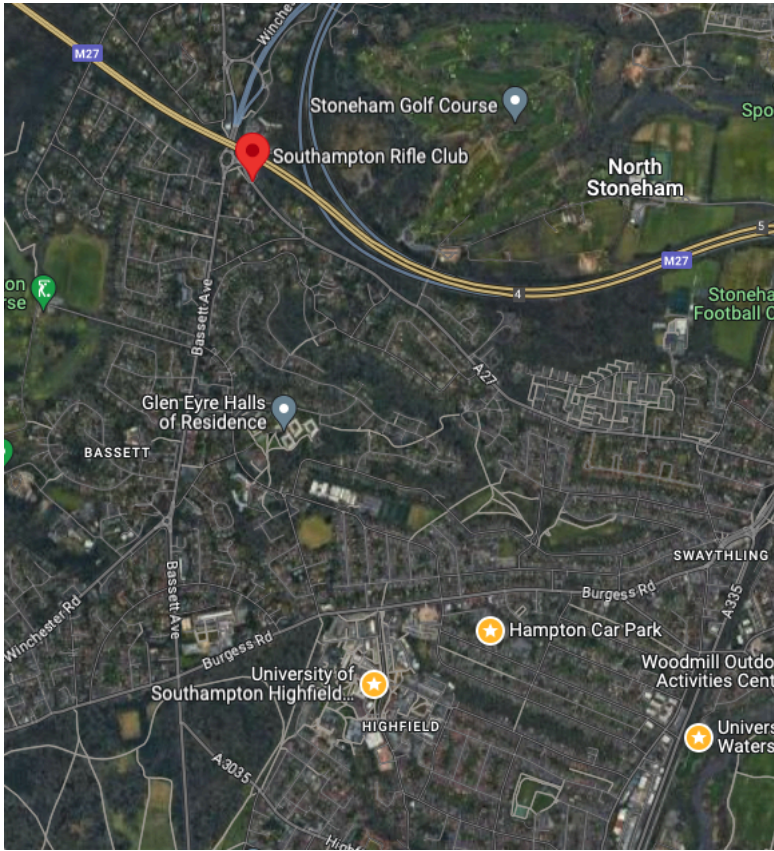


The bunker is situated at the top of the avenue, it appears on Google Maps as Southampton Rifle Club.



There are bus route options from campus as shown below.

The screenshot shows a Google Maps interface with a bus route search. The starting point is 'University of Southampton Highfield Campus' and the destination is 'Southampton Rifle Club, Bassett Green R'. The search results are as follows:

Time Range	Duration	Route Details
1:15 PM - 1:39 PM	24 min	U8 1:16 PM from Library · on time 3 min every 60 min
1:20 PM - 1:44 PM	24 min	U2B
1:27 PM - 1:44 PM	17 min	U2B / U2C
1:26 PM - 1:45 PM	19 min	1

The map on the right shows a blue route starting from the Library, passing through Chilworth Roundabout, and ending at the Southampton Rifle Club. It also shows other bus routes in the area, such as one from the Library to the Rifle Club (17 min) and another from the Rifle Club to the Airport (24 min).

Saxholm Way

Buses

1 612

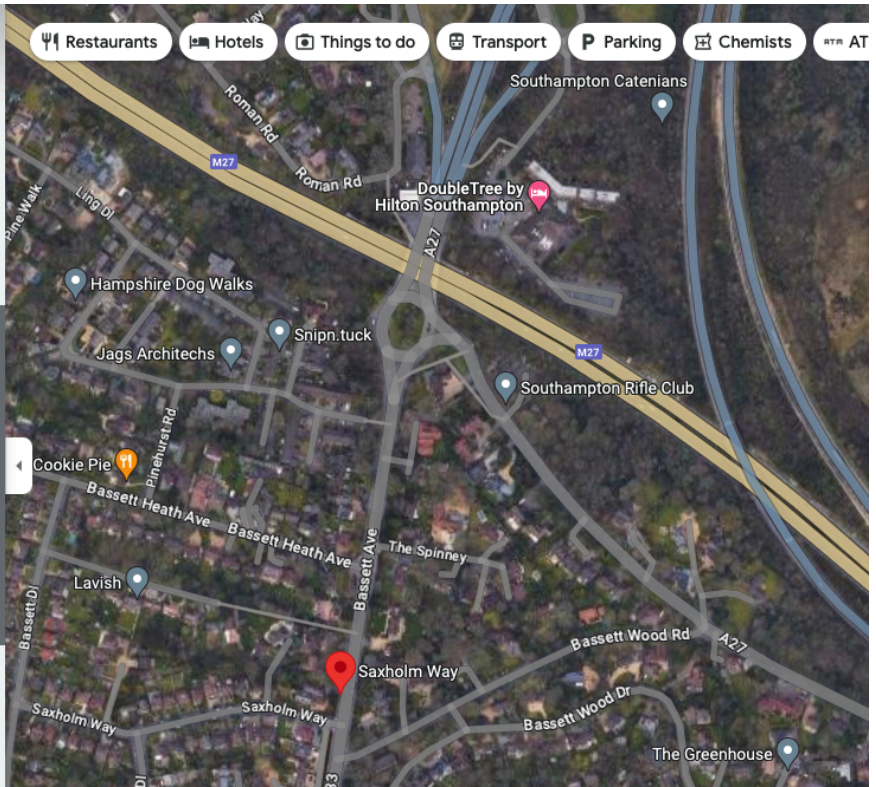
bluestarbus.co.uk

See departure board

Photos

All Street View & 360°

Add a photo



Westbrook Court

Send to your phone

Add a label

Suggest an edit

Popular times Mondays

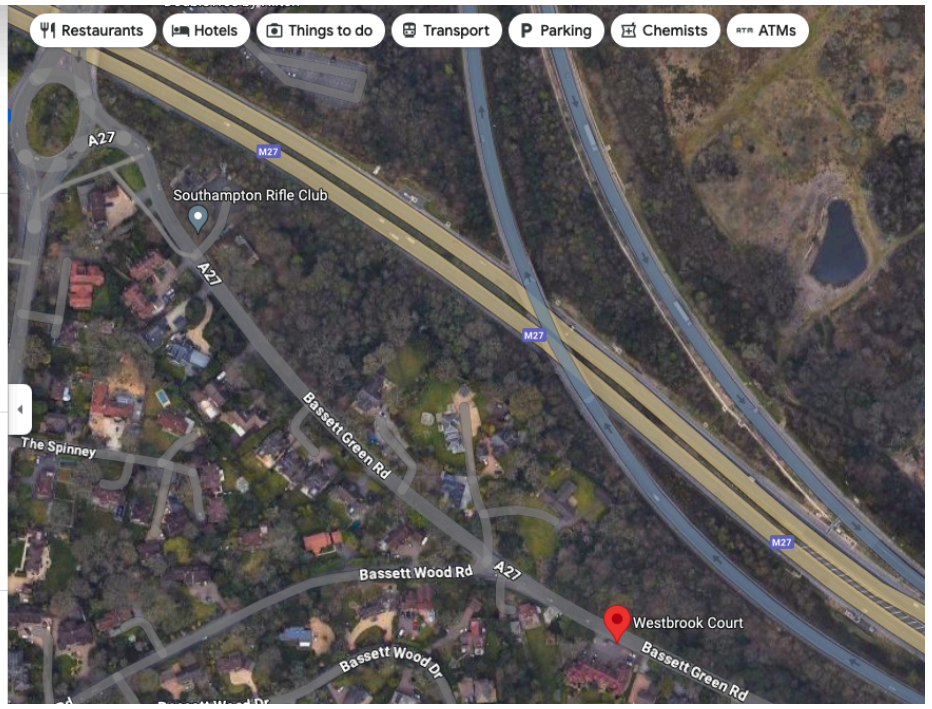
Buses

U2B U2C U8

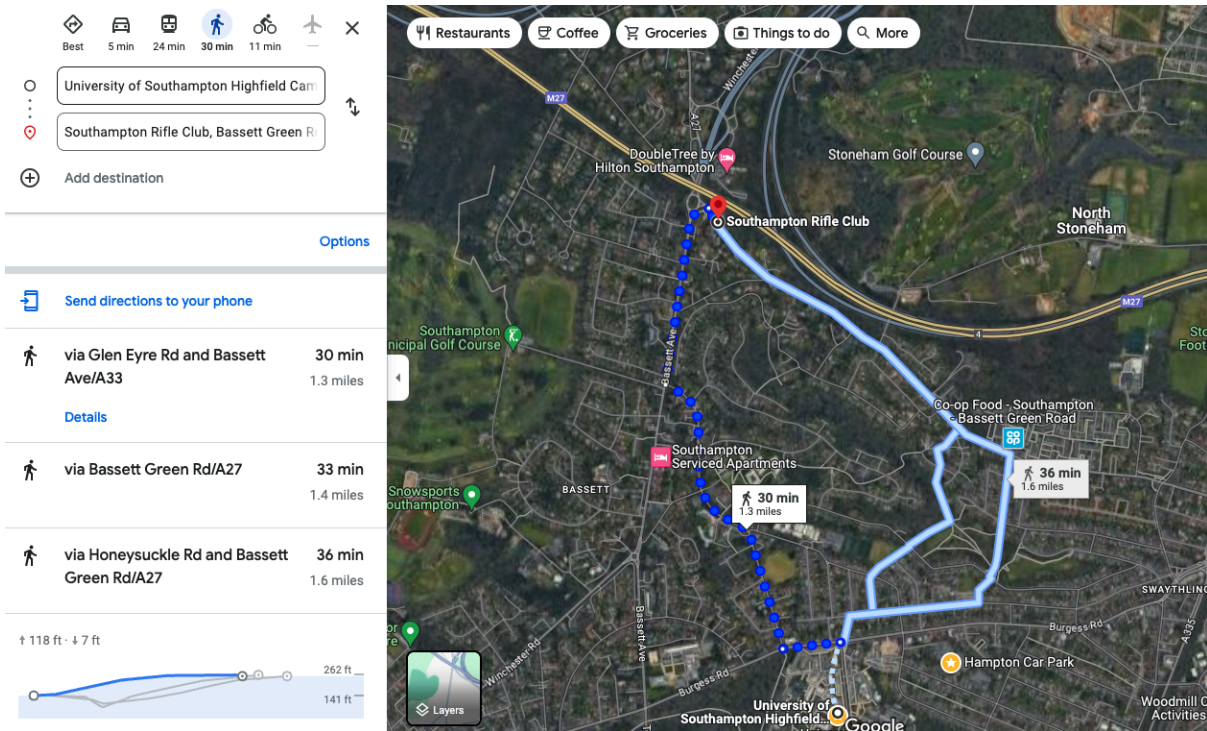
unilinkbus.co.uk

See departure board

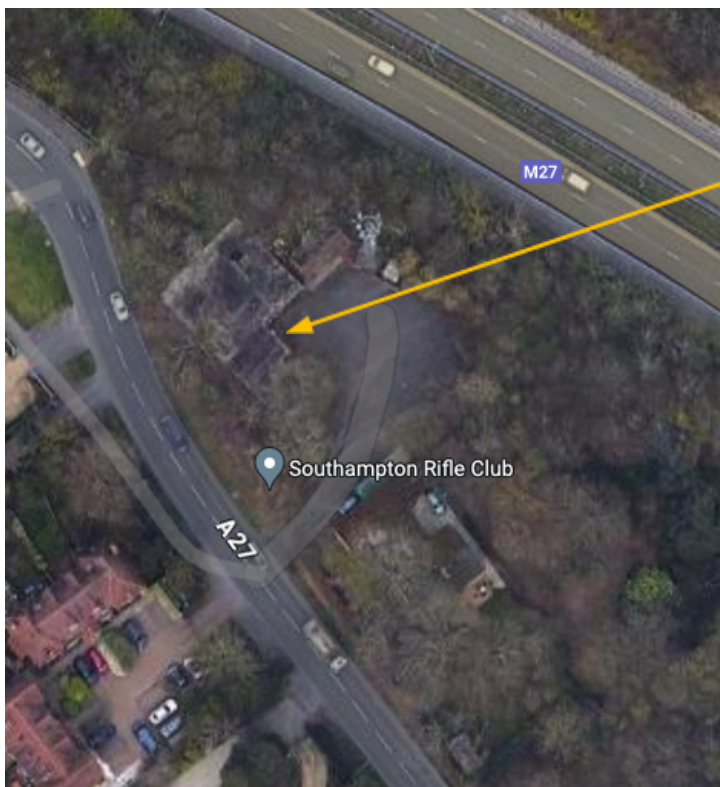
Photos



There is also the option to walk as shown below.



When arriving at the bunker, it is slightly hidden from the main road and is not labelled, so be sure to keep an eye out. There is limited parking available if you are a driver. If you drive, please consider picking up others who may also be going for a session, and you will be given a discounted rate as a thank you.



The entrance to the building is here. There is a secure entry system so you will need to press the buzzer and wait for someone to come out to you.