

Title Maximum 12 Words, Capitalize Each Word, Do Not Use Abbreviations [Times New Roman 16 pt, bold, space 1.0]

Author¹, Author², Author³ [Times New Roman, 12 pt, bold]

¹Faculty/Department, Affiliation/Institution, City, Country [Times New Roman, 12 pt]

²Faculty/Department, Affiliation/Institution, City, Country [Times New Roman, 12 pt]

³Faculty/Department, Affiliation/Institution, City, Country [Times New Roman, 12 pt]

ABSTRACT [Times New Roman, 12 pt, bold]

Insert your abstract, consist of 200-300 words with the following content—first, **Background:** Provide context or background of the study, and state the study's primary objective or hypothesis in 1–2 sentences. Also explain the previous study, what others do, or what you have done. The author includes hypotheses (if any) that explain the temporary results. Second, **Purpose:** Write down the purpose of the research conducted. —third, **Methods:** Describe the methods used in the study methods. Describe the basic procedure used during the study, including the selection of study subjects, observational and analytical methods. Define the primary outcomes measured for each group of subjects about implementing community engagement. —fourth, **Results:** If possible, summarize the main findings, including specific effect sizes and their statistical significance. Include (if relevant) the number of participants in each group, the primary outcome for each group, and any significant adverse events or side effects. Also explain the relationship between your theory and the results of your study. Fifth, **Conclusion:** In 1–2 sentences, state the principal conclusions, emphasizing new and important aspects of the study or observations in an element of community engagement. Sixth, **Implications:** conclusion that can be inferred from the study findings. What are the practical and theoretical implications of the study findings?

Abstract are written in one paragraph, font Times New Roman, 12pt, spaces 1.0.

Keywords: word a; word b; word c; word d; word e

To cite this article (APA Style):

First Author, Second Author & Third Author. (2026). The article title is sentence case style. *Kajian Jurnalisme*. 0(0), 00-00. <https://doi.org/10.24198/jkj.vxix.xxxx>

Correspondence: Full Name (with title), Affiliation, Address of Affiliation Complete with Postal Code, Email: (Times New Roman, 11 pt)

Submitted: Date Month Year, **Revised:** Date Month Year, **Accepted:** Date Month Year, **Published:** Date Month Year

ISSN: 2549-0559 (Printed), ISSN: 2549-1946 (Online), Website: <http://jurnal.unpad.ac.id/kajian-jurnalisme>
Copyright © 2026 Author(s). This is an open-access article under the CC BY-NC-SA license

INTRODUCTION [Times New Roman, 12 pt, bold]

The introduction contains of background, research problem, literature review, and objectives. The manuscript is typed in Times New Roman, 12 pt (except abstract and reference list 11 pt), spacing 1.15 (abstract and reference list are single-spaced). Margins use standard size (all sides 2.54 cm). The total number of articles is 6000 - 7000 words.

The Introduction section explains why the problem needs to be researched (research interests) and all supporting data or scientific evidence based on personal observations, research results of other researchers, or issues from community involvement in the community. The formulation of this research problem is always based on accurate and objective conditions scientifically.

There needs to be a theoretical background section in this paper. However, you should include your theoretical background in the Introduction section. The theoretical background contains previous theories and provisional hypotheses as the basis for the research. The theory can be in the form of scientific articles, articles in journals, textbooks, or other scholarly writing sources. This theory will be used to provide the art of your manuscript from the research problem that has been proposed. Other theories still needed to solve the research problem support the theories presented after the first theory is discussed.

Once the theory is mentioned and discussed, you need to form a problem that shows why this manuscript is important, existing gaps, and previous research, and you should write the purpose of the manuscript.

The citation format follows the APA Style 7th Edition, using Mendeley software. Always include page numbers in the APA in-text citation when quoting a source. Don't include page numbers when referring to a work as a whole – for example, an entire book or journal article. Writing citations with one author (Mulyana, 2015) or (Mulyana, 2015, p. 38); two authors (Gumilar & Kusmayadi, 2017) or (Gumilar & Kusmayadi, 2017, p. 38); three authors, and more (Yenrizal et al., 2015) or (Yenrizal et al., 2015, p. 38). Quotations of more than three lines should be written in direct quotation style (indented one space = 1.25 cm). Interview quotes are using code, (Informant 1, personal communication, May 30, 2013). The interviewee's identity does not need to be mentioned in the manuscript, but please be attached to a separate file.

RESEARCH METHOD [Times New Roman, 12 pt, bold]

Methods are the means used by the author to answer existing research problems. The method must be precise with the location and time of research, population and research samples, research variables, and research data. This section also explains the basic procedures used during the research, including data selection and sample collection techniques, observations, and data analysis. The manuscript is written in Times New Roman format, 12 pt, 1.15 spacing. The margins are normal size.

RESULTS AND DISCUSSION [Times New Roman, 12 pt, bold]

Subtitles [Times New Roman, 12 pt, bold]

This section is about research results and discussion. Results and discussion contain the results obtained by the author during the research. The research results are presented as a whole, followed by a discussion. The discussion is presented systematically from the general, then leads to more specific things.

The research presentation can be done with the help of tables, figures/graphics, maps/plans, and schemes. Tables and figures are given a clear title and description at the bottom of the table/figure. Include a minimum of one maximum of six tables or figures. Tables and figures are displayed with a resolution of 300dpi, JPG/TIFF/PNG format. Tables and figures are in portrait format, not landscape.

Your explanation in this section should be at least 40% to 50% of your manuscript. The manuscript is written in Times New Roman format, 12 pt, 1.15 spacing. Margins are normal size.

Table 1 (title) [Times New Roman, 11 pt, normal]

No.	Place	Time	Notes
1	Halmahera	April 5, 1969	
2	Bali		
3			

Source: processed from: Arif (2010:28) [Times New Roman, 10 pt, normal]



Figure 1 (title) [Times New Roman, 11 pt, normal]

Source: Gumilar (2019) [Times New Roman, 10 pt, normal, figure width 7 cm]

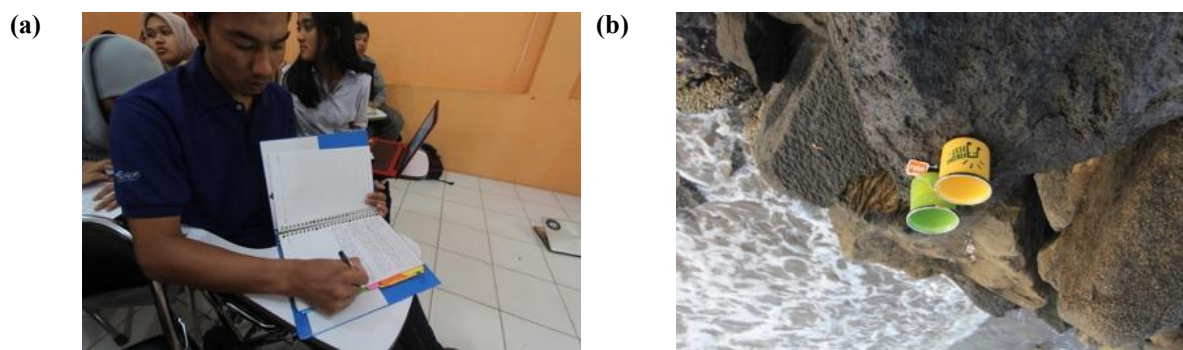


Figure 2 (a) first image caption; (b) second image caption [Times New Roman, 11 pt, normal]
Source: Gumilar (2019) [Times New Roman, 10 pt, normal]

Quotations of more than three lines are written in direct quotations, indented 1.27 cm.

KPI/KPID takes various ways to get around the scarcity of frequency channels for radio and television broadcasters in their respective regions. Among them is by opening secondary channels. Secondary channels are not offered in the service area but instead in other service areas located in the same province. For example, KPID West Java, which had difficulty obtaining television channels for the Greater Bandung service area, was forced to borrow channels from the Cianjur area, which happened to be "idle" with no users (Sjuchro, 2017).

CONCLUSION [Times New Roman, 12 pt, bold]

This section is about the conclusions of your research, including the novelty of the research results and their benefits to society/science. Mention recommendations from your manuscript related to the research that has yet to be explained in your research. The maximum conclusion is two paragraphs. The manuscript is in Times New Roman font format, 12pt, 1.15 spacing. Margins are normal size.

This section is required to be included in the manuscript!

Acknowledgements (Times New Roman 10): In this section, you can acknowledge any support given which is not covered by the author contribution or funding sections. This may include administrative and technical support, or donations. Example: "I/We would like to thank....".

Author contributions (if the author more than one): If there is only a single author in the article, this section is not necessary. For research articles with several authors, a short paragraph specifying their individual contributions must be provided. Please turn to the [CRediT taxonomy](#) for the term explanation. Authorship must be limited to those who have contributed substantially to the work reported.

The following statements should be used "Conceptualization, X.X. and Y.Y.; methodology, X.X.; software, X.X.; validation, X.X., Y.Y. and Z.Z.; formal analysis, X.X.; investigation, X.X.; resources, X.X.; data curation, X.X.; writing—original draft preparation, X.X.; writing—review and editing, X.X.; visualization, X.X.; supervision, X.X.; project administration, X.X.; funding acquisition, Y.Y. All authors have read and agreed to the published version of the manuscript."

NOTE: X.X., Y.Y., and Z.Z. are the initial of the author's name.

AI declaration: The authors would like to clarify the use of Artificial Intelligence (AI) tools in preparing this manuscript. If AI tools were used, please specify which tools were employed and their purpose. All AI use complies with the journal's policies and may be verified through Turnitin, with the AI detection score kept

below 20%. The authors take full responsibility for the content of this manuscript and for the appropriate and ethical use of any AI tools during its preparation and submission. If no AI tools were used, please declare: “The authors hereby declare that no Artificial Intelligence (AI) tools were utilized in the preparation, writing, analysis, or editing of this manuscript,” and confirm that no AI tools were used at any stage prior to publication.

Ethical clearance: Authors are kindly requested to provide a statement confirming that the research has received ethical approval from the relevant institutional or national ethics committee, where applicable. The statement should include the name of the ethics committee, the approval reference number or code, and any relevant dates. For research involving human participants, authors must confirm that informed consent was obtained from all participants and that the research was conducted in accordance with applicable ethical guidelines. Examples for authors, if ethical approval was obtained: “Ethical approval for this study was granted by the Institutional Review Board at [University/organization Name] (Protocol ID: 2023-XYZ). Informed consent was obtained from all individual participants included in the study.” If not applicable: “his study did not involve human participants, animal subjects, or personal data.”

Data availability statement: In this section, please provide details regarding where data supporting reported results can be found, including links to publicly archived datasets analyzed or generated during the study. Please refer to [Data Availability Policy](#). Also, the author can write “The data is available by request to the author” if the data is not available publicly. If the study did not report any data, you might add “Not applicable” here.

Conflicts of interest: Declare conflicts of interest or state “The authors declare no conflict of interest.” Authors must identify and declare any personal circumstances or interest that may be perceived as inappropriately influencing the representation or interpretation of reported research results. Any role of the funders in the design of the study; in the collection, analyses or interpretation of data; in the writing of the manuscript, or in the decision to publish the results must be declared in this section. If there is no role, please state “The funders had no role in the design of the study; in the collection, analyses, or interpretation of data; in the writing of the manuscript, or in the decision to publish the results”.

Funding: If no funding was provided, please declare: “The authors declare that no funds, grants, or other support were received during the preparation of this manuscript,” or if funding was provided, please declare: “This work was supported by the [Funding Agency] under Grant [Grant Number XXX]” and “The APC was funded by [XXX].” Check carefully that the details given are accurate and use the standard spelling of funding agency names at <https://search.crossref.org/funding>. Any errors may affect your future funding.

REFERENCES [Times New Roman, 12 pt, bold]

The references only contain sources that are mentioned in the article’s body and are relevant to the core research. Conversely, sources that are mentioned in the article must be included in the references. Placed on the last page (not a new page), it consists of at least 25 sources, with 80% are journals (minimum 15 articles from international journals and 5 articles from national journals), up-to-date (80% of references must be within the last 5 years). The references format follows the APA Style 7th Edition citation writing style and is described alphabetically and chronologically. Spacing one and times new roman 11 pt. (see template below). Writing citations and references using Mendeley software.

An example of writing a reference list can be seen below:

Article Title [Capitalize Each Word, Times New Roman 11 pt]
(First Author, Second Author, Third Author)

Book

Mulyana, D. (2012). *Cultures and communication an Indonesian scholar's perspective*. Remaja Rosdakarya.

Balbi, G., Ribeiro, N., Schafer, V., & Schwarzenegger, C. (2021). *Digital roots: Historicizing media and communication concepts of the digital age*. Walter de Gruyter.

Printed Journal

Yenrizal, Bajari, A., Rahmat, A., & Iskandar, J. (2015). The meaning and value attachment to natural symbols by farmers in a rural setting: An ethno-ecology communication study of rural farmers in Swarna Dwipe village of Muara Enim regency in South Sumatera. *International Journal of Applied Engineering Research*, 10(16), 37630–37636.

Online Journal

Gumilar, G., & Kusmayadi, I. M. (2017). Instagram usage by barstrad community in Bandung City. *Jurnal Komunikasi Ikatan Sarjana Komunikasi Indonesia*, 2(2). <https://doi.org/10.25008/jkiski.v2i2.104>

Encyclopedia

Holmes, D. (2009). New media theory. In *Encyclopedia of Communication Theory* (p. 684). SAGE Publication.

Printed Newspaper

Rosenberg, G. (1997, March 31). Electronic discovery proves an effective legal weapon. *The New York Times*, p. D5.

Online Newspaper

Rosenberg, G. (1997, March 31). Electronic discovery roves an effective legal weapon. *The New York Times*. Retrieved from <http://www.nytimes.com>

Printed Magazine

Tumulty, K. (2006, April). Should they stay or should they go? *Time*, 167(15), 3-40.

Online Magazine

Tumulty, K. (2006, April). Should they stay or should they go? *Time*, 167(15). Retrieved from <http://content.time.com/time/magazine/article/0,9171,1179361,00.html>.

Articles from websites with the author's name

Simmons, B. (2015, January 9). *The tale of two Flaccos*. Retrieved from <http://grantland.com/the-triangle/the-tale-of-two-flaccos/>

Articles from websites without the author's name

Teen posed as doctor at West Palm Beach hospital: police. (2015, January 16). Retrieved from <http://www.nbcmiami.com/news/local/Teen-Posed-as-Doctor-at-West-Palm-Beach-Hospital-Police-288810831.html>

Thesis or Dissertation

Fadhila, B. (2017). *Kontroversi Sensor Pemberitaan Atlet Renang Papua di Media Sosial*. Universitas Padjadjaran.