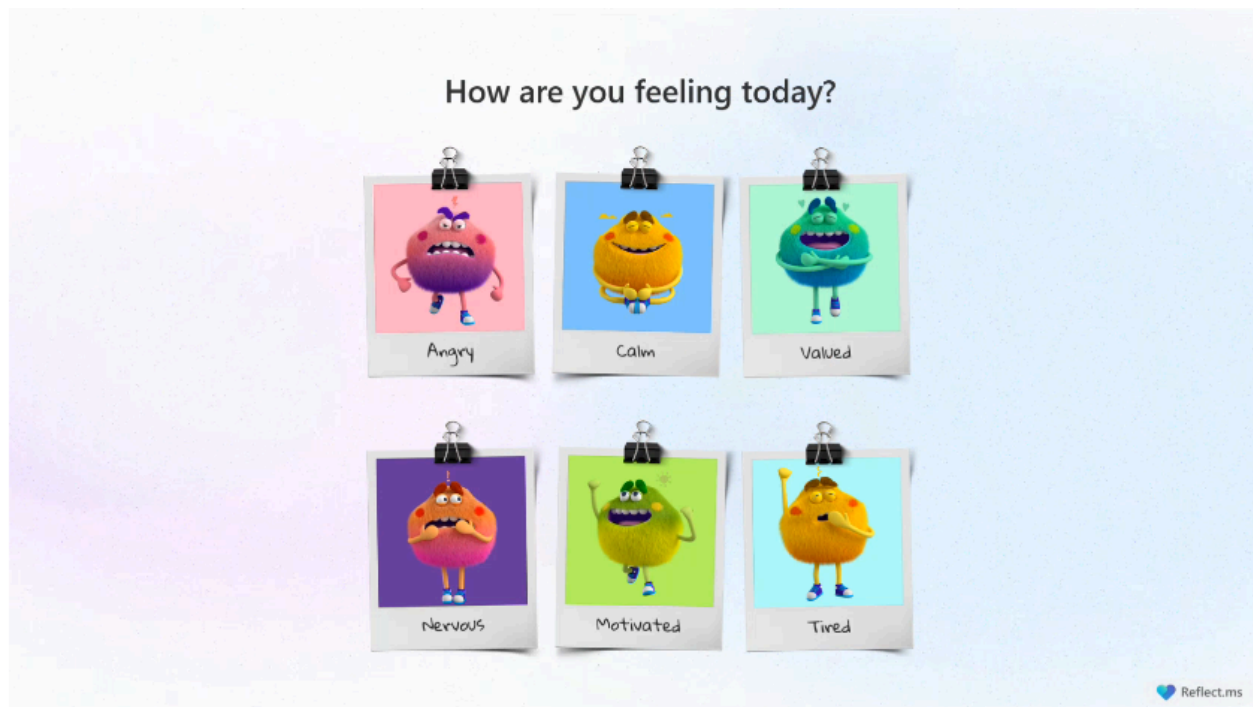
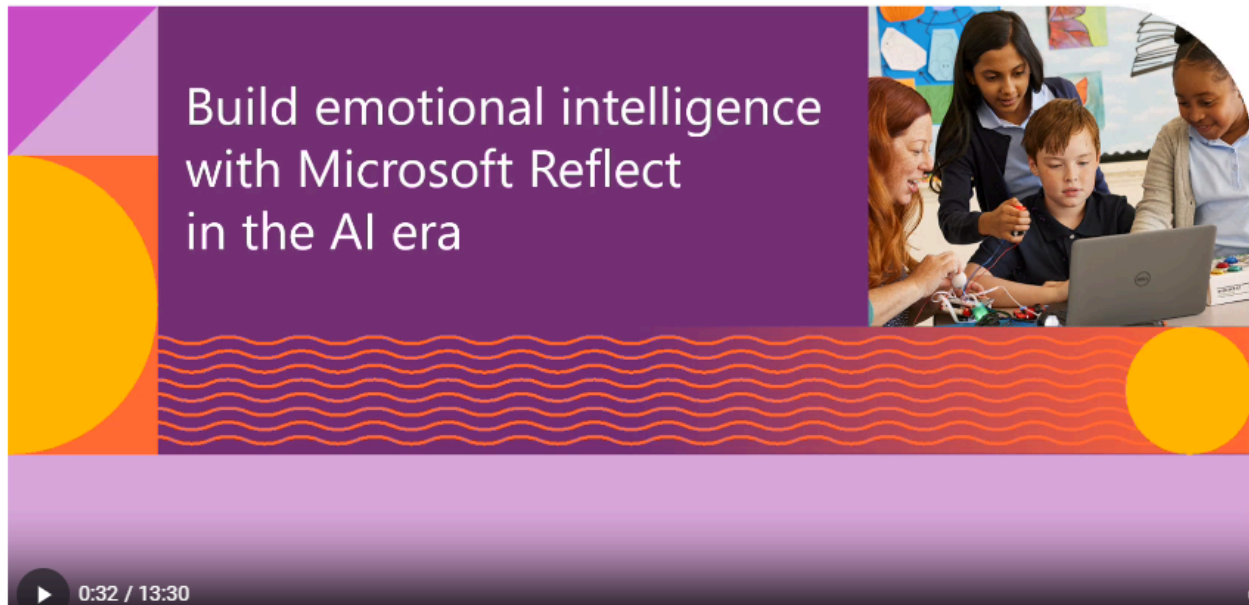


Sosial Emosional Murid dengan Microsoft Reflects



School days are filled with a rollercoaster of emotions.

Checking in with students is crucial to ensuring their wellbeing and providing support when needed.



"Riley's life is more complex now;
it requires **more sophisticated emotions** than you"



A look back at 2023-2024 school year check-ins:
Tired and happy are the most common emotions



Reflect.ms

Why Social and Emotional Learning (SEL) **matters**?



Improved student
performance and
wellbeing



Better preparation
for all-around success
in later life



Readiness for future employment
which demands strong social-
emotional skills



SEL contributes to flourishing wellbeing

Reflect.ms

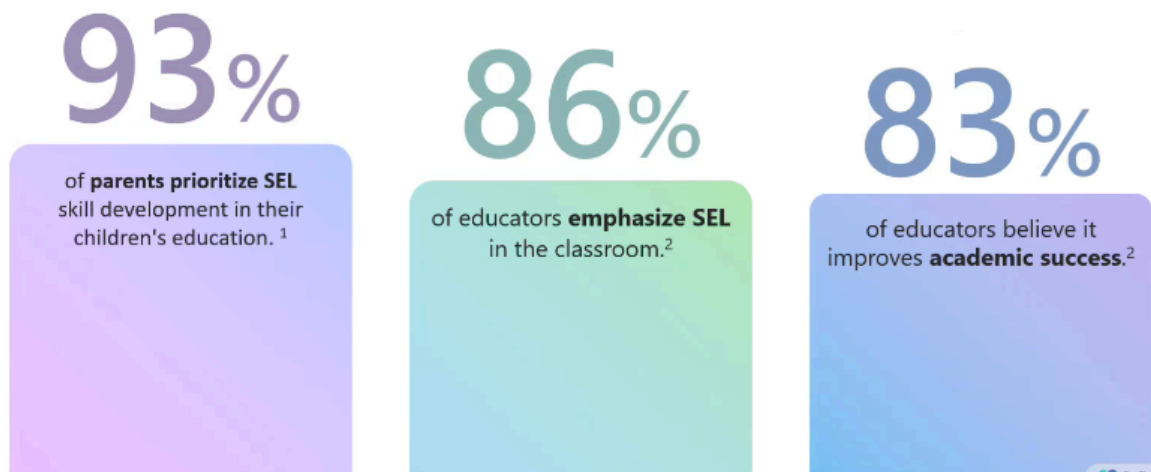
Teaching SEL **improves outcomes**



Source: Crissman et al. 2023

Reflect.ms

Parents and educators **strongly support SEL**



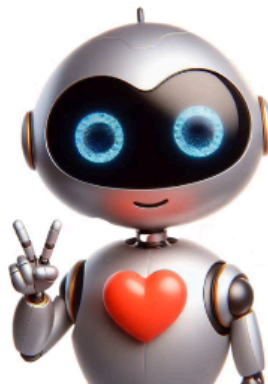
1. Pew Research Center 2. EdWeek Research Center survey

Reflect.ms

Emotional intelligence in the AI era

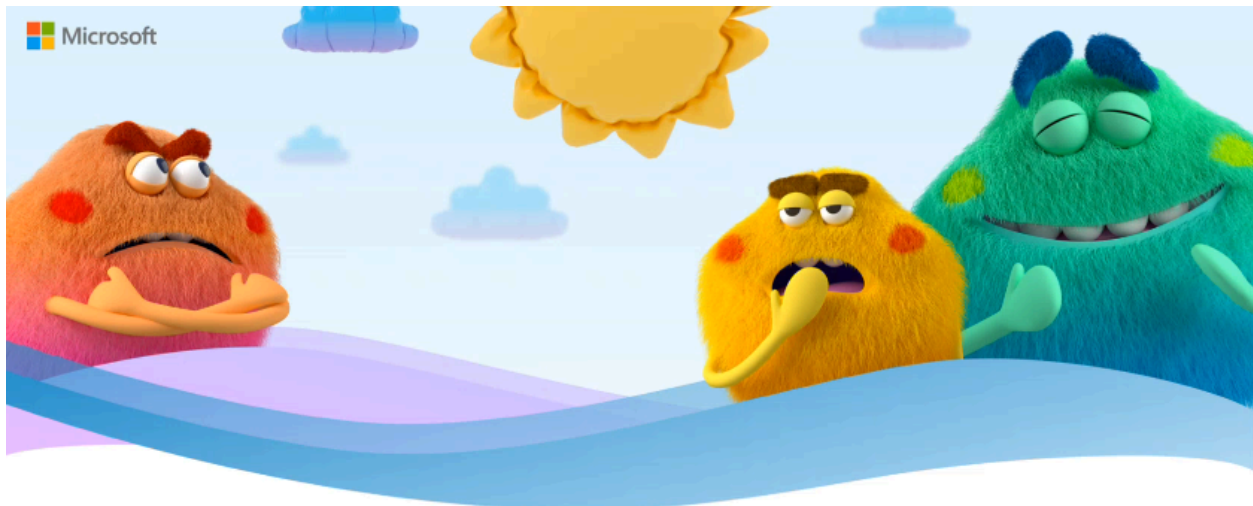
Focusing on real relationships and real-world interactions is more essential than ever.

AI is beneficial for spotting problems early, developing standards of care for therapy, collecting metrics, and building EI skills.



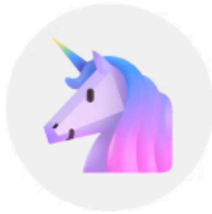
AI is **not** sentient; it's crucial to use virtual assistants wisely as they can impact our sense of connection if they don't meet our needs.

 Reflect.ms



Microsoft Reflect A wellbeing app to support connection, expression, and learning

The impact of **Microsoft Reflect**



Build self-awareness & empathy




Grow emotional vocabulary



Identify & navigate emotions



Develop growth-mindset & confidence

 Reflect.ms


The impact of **Microsoft Reflect**



Promote **school connectedness**

Students feel that adults and peers in school care about their learning as well as about them as individuals.

0:10 / 10:00

 Reflect.ms

The impact of **Microsoft Reflect**

Educator wellness

Building trust and cultivating better relationships with colleagues and students, managing stress, thriving in the workplace, and fostering a community where everyone feels like they belong.



Reflect.ms

Reflect meets you
right where you are – **for free.**

Accessible on any device, seamlessly in
your browser, through Microsoft Teams,
or within your institution's LMS.



Reflect.ms

How do I **get started**?

Let's learn about the key steps to create impactful check-ins, gaining wellbeing insights, and building a happier, healthier learning community.



**Create
check-in**

Share it

**Collect
Responses**

Get insights

**Build a culture
of wellbeing**

 Reflect.ms

Reflect with confidence

With Microsoft Reflect, you can be sure that your data and privacy are secure, and our solution complies with international regulations and best practices.



Secure

Complies with regional and industry-specific regulations for data collection and use, including GDPR and FERPA.



Private

You have complete control over who is invited to respond to the check-in and what they can see.

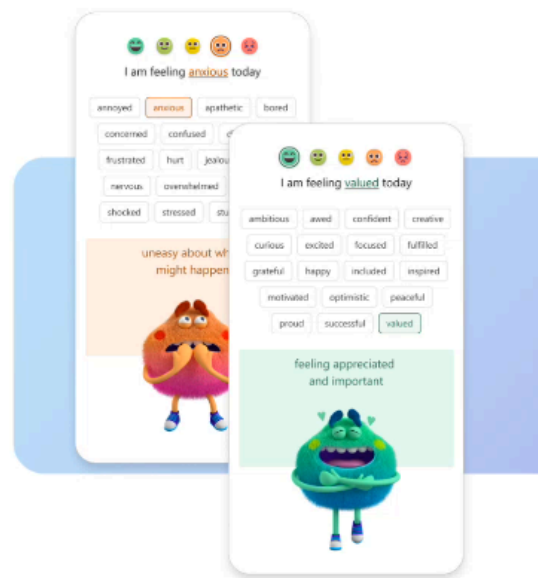


Research-backed

We place significant emphasis on grounding Reflect in research to prioritize the safety and well-being of students, staff, and families.

Get started

Check in with learners

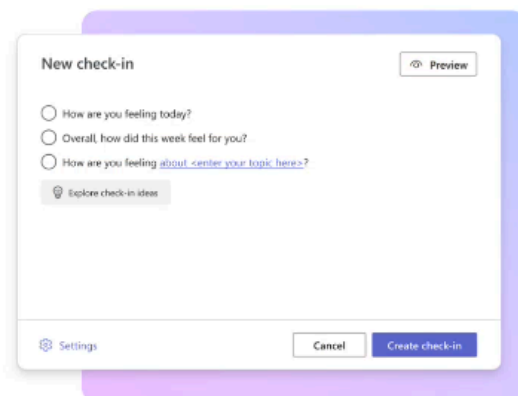


Reflect.ms

Get started

Create

- You can easily set up regular check-ins for students, staff, and families to understand how they feel about any topic, in any language.
- Having a space to share helps in building a learning ecosystem where everyone feels safe to make mistakes and grow.



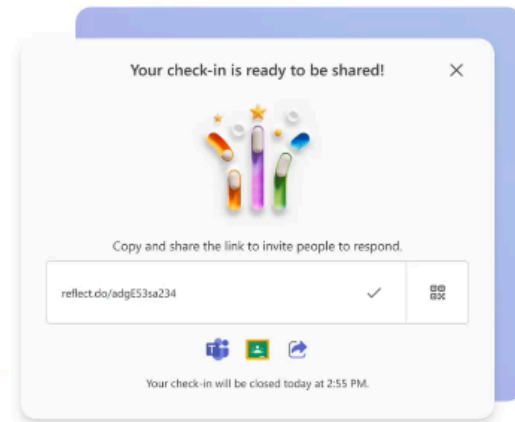
Reflect.ms

Get started

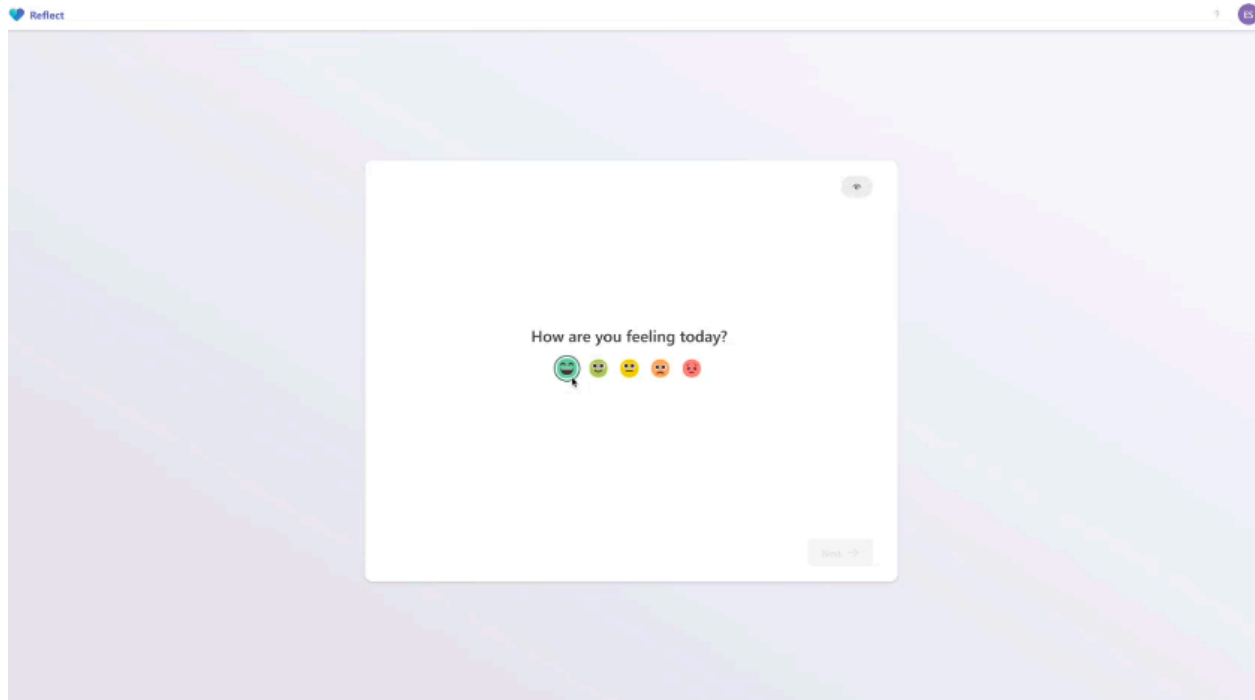
Share

After you create the check-in, you have control over who is invited to respond to it.

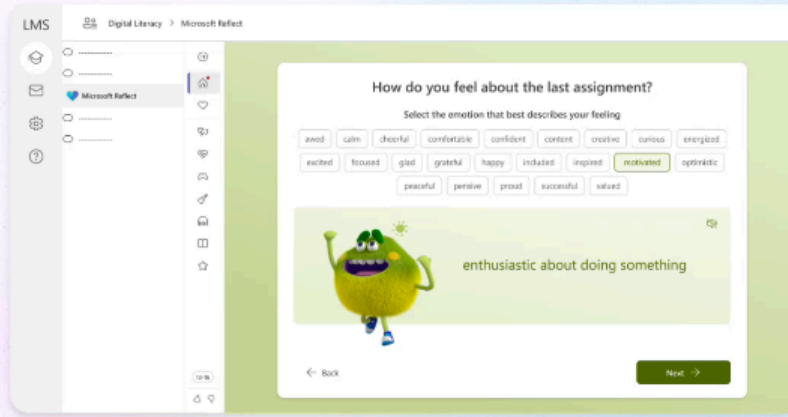
- Easily share the **check-in link** or **QR code**.
- You can also share it as an announcement, message, or assignment on **Microsoft Teams** or **Google Classroom**.
- Project the QR code to host live check-ins on a big screen.



Reflect.ms



When you install Reflect in your LMS or use it in Teams, check-ins are automatically shared with the course members.



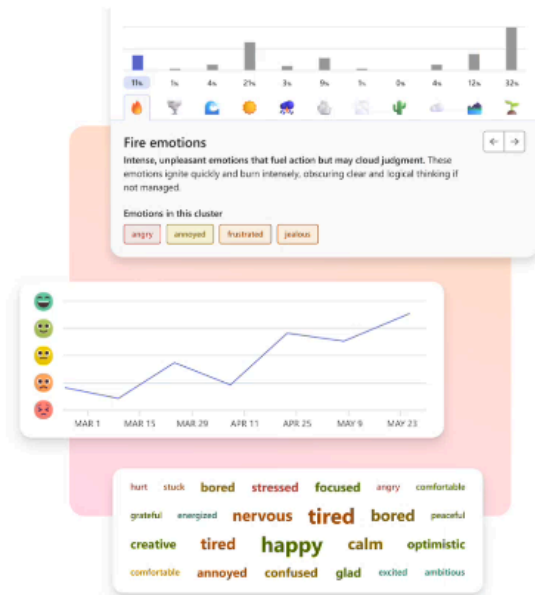
Reflect.ms

Get started

Explore trends

- Collect students and staff responses over time to uncover trends, identify patterns, and provide continuous support.
- Reflect supports SEL skills and helps identify and plan instructional changes, environmental adjustments, and assessment strategies.

You can build your own dashboard with the new Microsoft Graph API and connect wellbeing data with other datasets in a school or district-wide dashboard.



Reflect.ms

Inclusively designed

Reflect provides an inclusive experience for all ages and abilities:



The Feelings Monster

A research-backed character presenting over 60 emotions playfully, helping users identify emotions by connecting facial expressions and body language to emotional vocabulary.



Simplified vocabulary

Check-in setting focused on frequently used emotions. Ideal for younger students and those with disabilities.



Listen to emotions

Users can tap on the speaker icon to listen to a human voice expressing and explaining each emotion.

11:57 / 13:30

Reflect.ms

1 Create

☒ Options for unpleasant emotions

I don't have enough time to do it X Too much homework X It's boring X

It doesn't seem useful X I don't understand the homework X It's too hard X

Instructions are confusing X [+ Add option](#)

☒ Options for pleasant emotions

I have enough time to do it X The amount is fine for me X It's interesting X

It's helpful and worth doing X Instructions are clear X Doing it can help my grade X

[+ Add option](#)

2 Respond

How are you feeling about your homework?



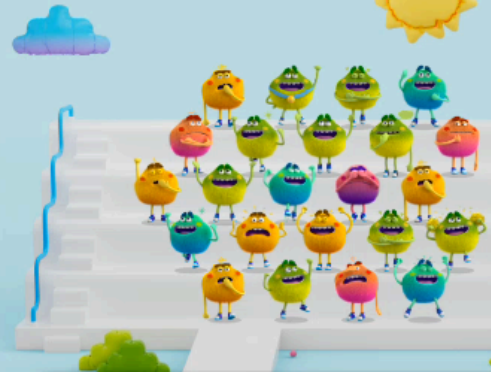
Select all the reasons that make you feel that way

I don't have enough time to do it ☒ Too much homework ☒ It's boring ☐ It doesn't seem useful ☐

It's too hard ☐ Instructions are confusing ☐ I'm worried about getting a bad grade ☐

3 Insights to action

How are you feeling about your homework?



Quantity	Quantity	Engagement
I don't have enough time to do it 12	I have enough time to do it 7	It's boring 6
Too much homework 9	The amount is fine for me 6	It doesn't seem useful 1
Instructions are confusing 6		It's interesting 54
		It's helpful and worth doing 11

Reflect.ms

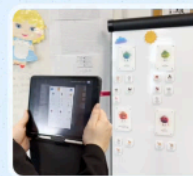
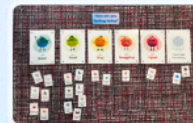
More ways to Reflect

Emotion Board



12:21 / 13:30

Reflect.ms



Yuche Yahya Sukaca

13:09 / 13:30

Reflect.ms