

Anbernic RK3566 [353P/M/V/Arc-D and others] Android Debug Bridge (ADB) connection guide for ROCKNIX OS installation procedure

NEVER USE CHEAP CHINESE CARD READERS!

P/M/V USERS

You will need to wipe the Android partition to boot into ROCKNIX.

WARNING - This will remove Android completely from your device.

Preparation step:

1. Go to <https://en.t-firefly.com/doc/download/93.html> and download Tools - Driver Assistant

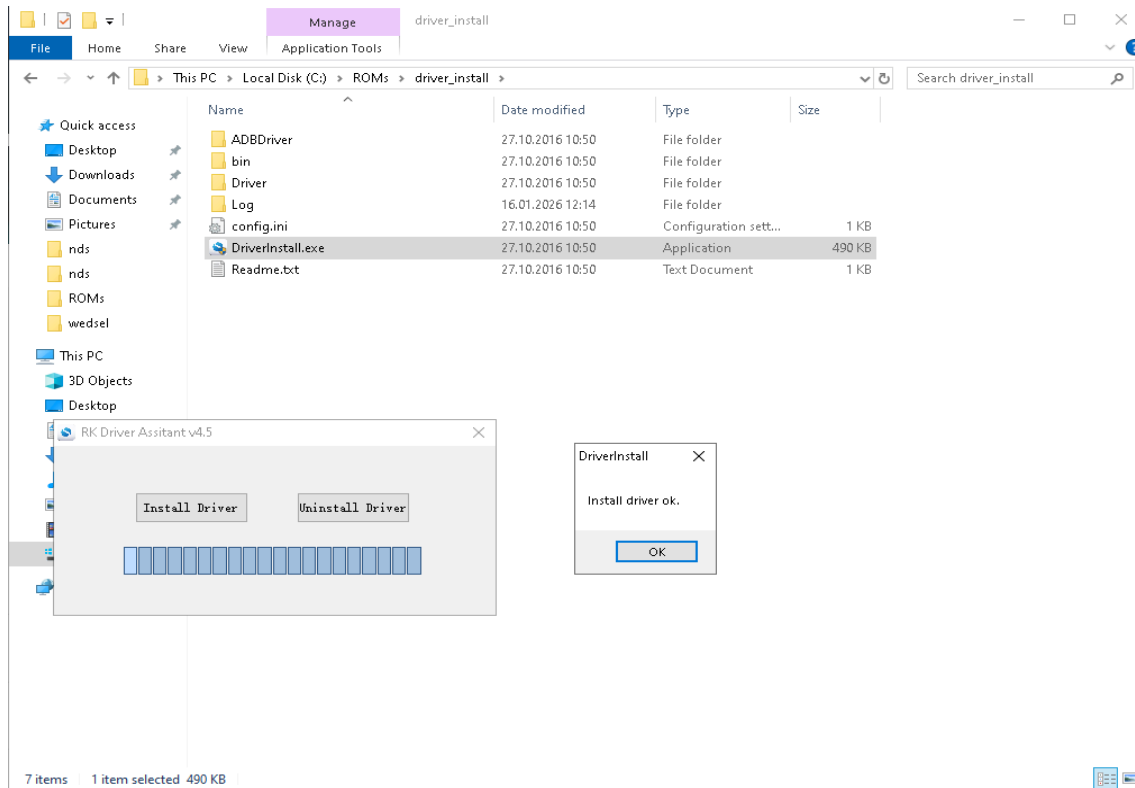


Driver Assistant (common)

2017-07-25



2. Unpack the archive anywhere on your PC, launch DriverInstall.exe (make sure to have Admin privileges)
3. Click Uninstall Driver first, after that Install Driver



1) Shutdown Anbernic via Android or any OS which comes with the device

2) Eject any MicroSD card you have in the device

3) Turn on the device with Power button (it should boot into Android OS)

4) Pull up the screen from the bottom and find Settings

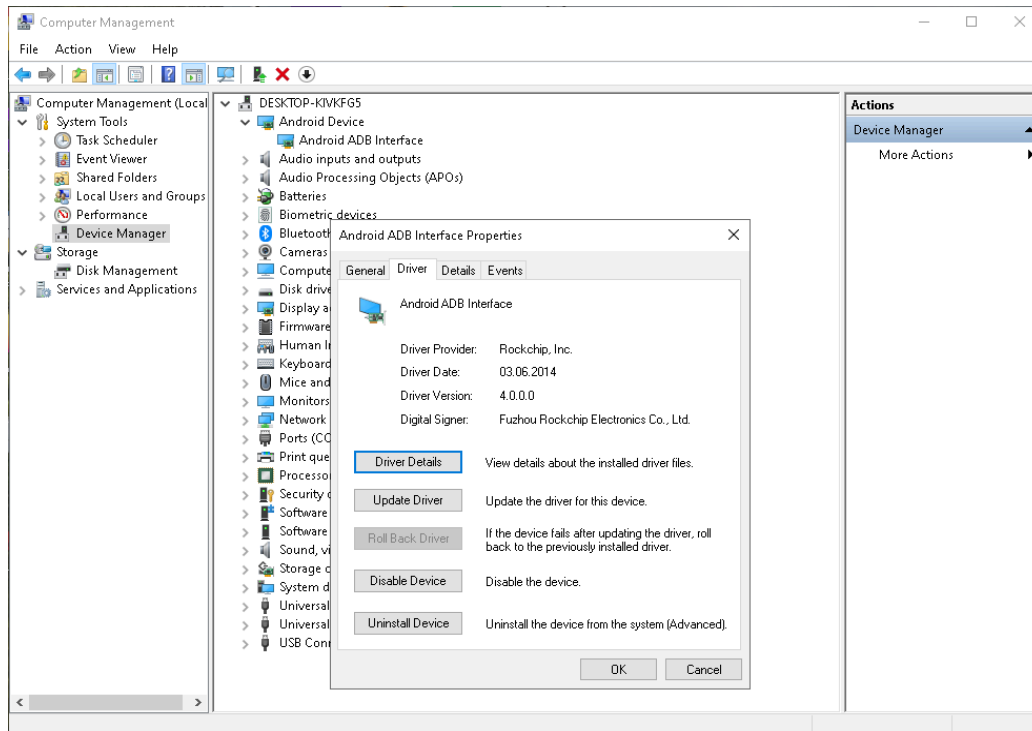
5) Next, prepare your RK3566 device for debugging:

1. Enable Developer Options: Go to Settings > About tablet and tap the Build number seven times until a message confirms you are a developer.

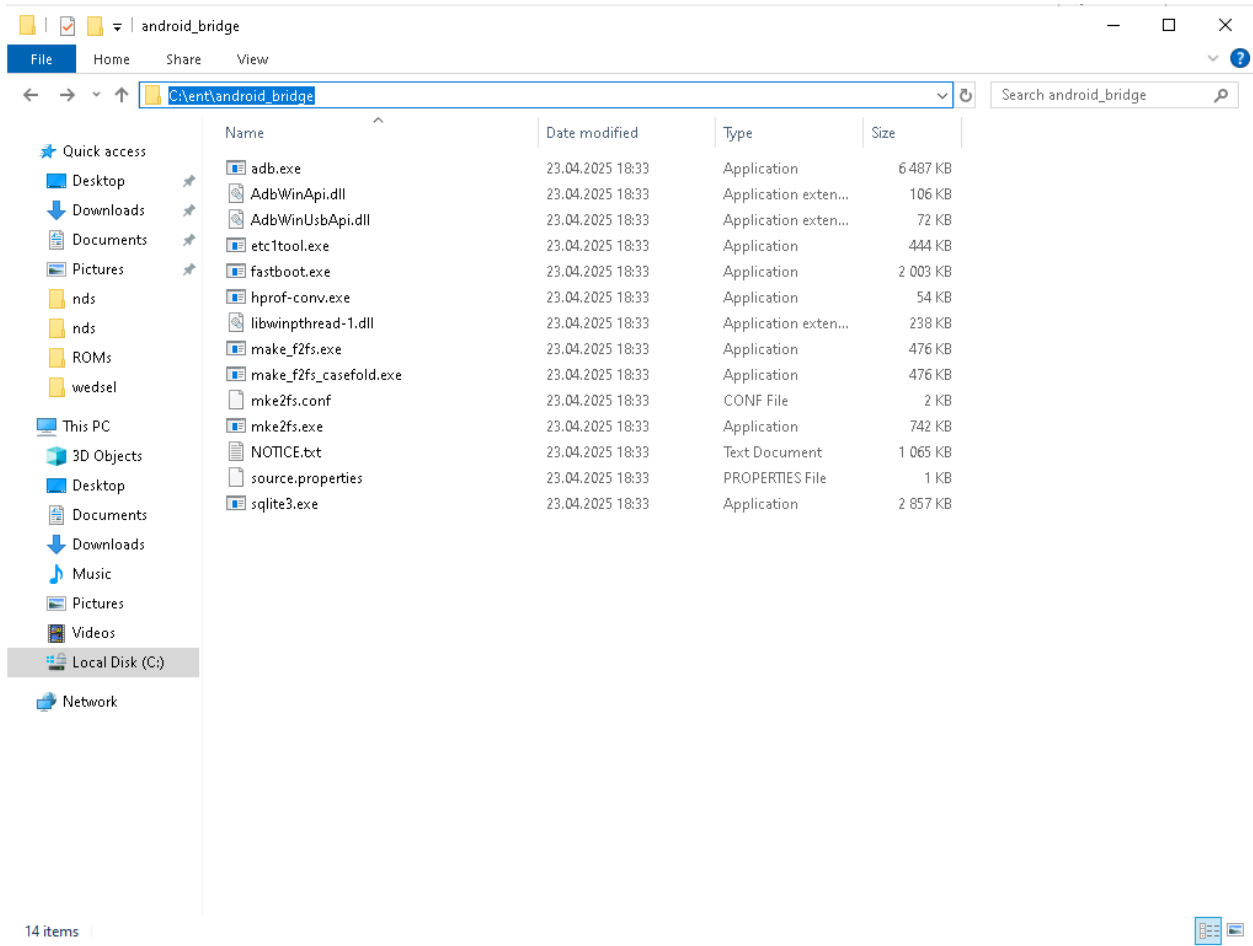
2. Enable USB Debugging: Navigate to Settings > System > Advanced > Developer options and enable the "USB debugging" option (might be already enabled). I also recommend enabling Stay awake option.

1. Connect Anbernic device to your host computer using a Type-C data cable plugged into the device's DC port.

2. We can check if the device is properly connected via Computer Management:



3. Download the ADB Tools: <https://developer.android.com/tools/releases/platform-tools>
4. Tool comes as an archive, extract the files to a directory and copy the path.



3. On your host computer, open a terminal or Command Prompt window (cmd.exe, preferably as Admin), type `cd "your_full_path"`. In my case it would be `cd C:\ent\android_bridge` (use quotes if your path contains spaces).

4. Run the following command to check for connected devices

```
adb devices
```

Correct output should be:

```
C:\ent\android_bridge>adb devices
List of devices attached
f2096c93fc640f3a    device
```

5. From now on we can follow the instructions from ROCKNIX/NOTES section <https://rocknix.org/devices/anbernic/rg353pmvvs/>

- Switch ADB into root mode using **adb root** - You may get a timeout error here, continue on anyway [No errors in my case]
- If you would like a backup of your Android partition, run `adb pull /dev/block/mmcblk0 android.img` [Optional]
- Get into ADB shell with **adb shell**
- Wipe the Android partition: **dd if=/dev/zero of=/dev/block/mmcblk0 bs=4M** This will take a few minutes and when it is done you will get an "out of space" message. [No messages in my case]
- Exit the shell **exit**

For me after doing **dd if=/dev/zero of=/dev/block/mmcblk0 bs=4M** step my Anbernic 353P disconnected itself from my PC.

After that I turned off the device via long press of power button, then inserted my 16GB microSD burned with ROCKNIX into TF1 slot. For burning the Image I used Win32 Disk Imager:

<https://sourceforge.net/projects/win32diskimager/>

Turn on the device and you should see ROCKNIX logo, let it initialize until it's finished. When done, you will see colorful menu of ROCKNIX, which means it's a success.

We can now turn off our device again and insert second microSD card into TF2 slot.