

Sig's Commission Info

Sig's Commission Info

Hello there! Welcome to my commission info!
Please read this before contacting me for a commission!

Queue and Commission Form

To see the status of your commission(s), click on the link below!

   [Trello Commission Queue](#)   

For a quick order, fill out this commission form by clicking on the
link below!

   [Commission Form](#)   

 Prices

Sig's Commissions 2.0



Line Art = \$45



Flat Colored = \$55



Reference Sheet = \$75+



Cel Shaded = \$65



3-5 Doodle pages = \$75 - \$95+



Icon = \$50



5-10 emotes = \$40 - \$80

PO\$Z
Payment method

LINK IN BIO for more comm info, contacts, queue, etc!!

➔ dowee-sig.carrd.co ⬅

🤔 What do I draw?

✓ - I can/will draw:

- Simple and Cartoony art style
- Humans and animals
- Anthropomorphic characters, Mythical/Fictional creatures

- Fan art, especially Super Mario, Kirby, Sonic, Pokemon
- Original characters and Fan-characters
- Ships (maybe since I'm not too big on that)
- I guess I'm fine with drawing whatever as long as they aren't the ones I've mentioned in the "can't/won't" section.

- I can't/won't draw:

- Realism
- NSFW, Fetishes, Sexualized art, Explicit gore
- Complicated character designs (unless I can simplify it), Mecha, Vehicles
- Hate art, Religious art, Political art, or Problematic art

Add-Ons

- Additional figures/characters will be **\$10 each**.
 - I can only draw up to at least 3-5 characters in a lineart/flat colored/cel shaded commission.
 - I will only draw one or two character(s) in an icon commission.
 - An emote commission will only focus on a singular character. However, I may be able to do more than one character but only up to at least 5-6 emotes and depending on some difficulty.
- The background will be plain or patterned by default. A detailed background will be **\$20 for line art/flat colored** and **\$30 for cel shaded**.



Rules/Guidelines

- Payment Method: **SQUARE, PayPal, CashApp, and Zelle ONLY.** For SQUARE and PayPal, they will be used for invoices.
- All commissions are for **personal/non-commercial use ONLY**
- **Please ask for a slot availability before you order.**
- Full or half deposit is required upfront before starting your commission. I will send a few WiPs to you for review. Once approved, the final version will be sent to you (For the half deposit payment, however, the final version will be sent after the remaining balance is paid).
- I am allowed to decline commissions that I'm not comfortable with.
- No refunds unless I'm unable to do the commission.
- Please send me reference(s) of your figure/character/etc(s)
- **3 free revisions.** Any more than that will be **\$5 extra.**
- While it usually takes at least 2-3 days for me to finish a commission, some may take longer depending on the circumstances. Please have patience.
- You can message me if you want to know how far I am with your commission in progress. Just don't do it constantly, please.

- Rules regarding the reference sheet commission

- The reference sheet is **\$75** (front and back views of the character) or **\$65** (just the front view) by default. The color palette and the character's name are mandatory. I will add a few minor details like their gender, sexuality, species, etc as long as you ask me to.

- **Expressions (optional):** I will draw at least 2-4 expressions of your character in your ref sheet. Please tell me what kind of expressions you like for me to draw of your character. Each will be \$5
- **Extras (optional):** Basically important things like items, accessories, and/or visible details about your character that you want me to draw in your ref sheet. Each will be \$5-\$10
- **Alts (optional):** An alternative full body drawing(s) of your character. Each will be \$10


- Rules regarding the doodle page commission

- I will be drawing at least 3-5 doodles which will make the price be \$75-\$95 by default. **The price will be raised by \$5-\$10** depending on the amount of things (specifically characters) that you want me to add to your doodles.
- Canvas size will be **800 x 800px** or less depending on the amount of doodles.
- While I don't mind drawing a few characters, the doodles should mainly be focusing on **one or two character(s)**.
- The doodles will range from styles to styles such as full bodies, bust shots, headshots, and/or chibi depending on how much they can be fit into the canvas.
- The doodles can be simple poses, expressions, small sequences, etc as long as they're not anything too complex and/or don't match with the things in the "I can't/won't draw" section
- No detailed backgrounds

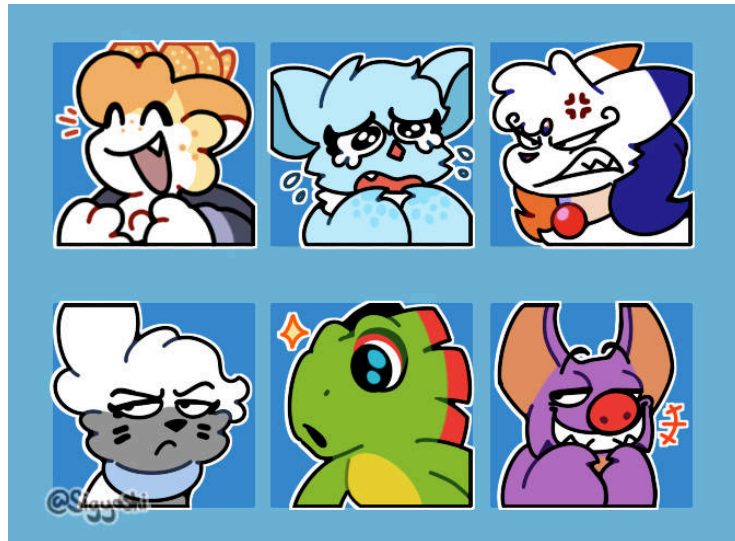
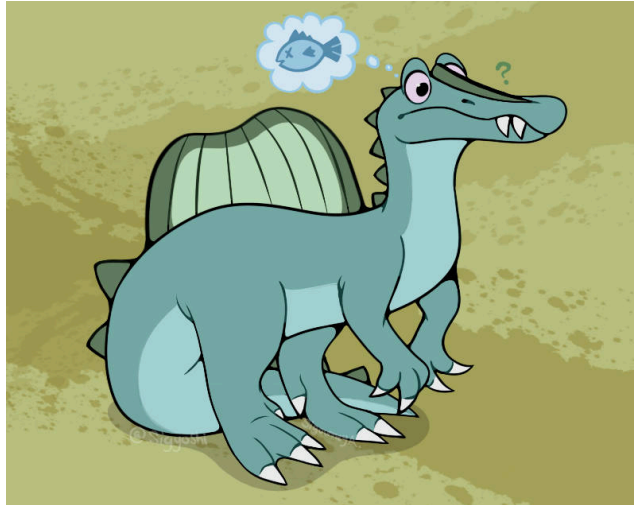


Commission Examples

You can find many examples of the commissions that I've done through the link below!

→ → →  Sig's Commissions ← ← ←





😊 Where to contact me?

- [Instagram](#)
- [BlueSky](#)
- [Tumblr](#)
- [DeviantART](#)
- [Twitter](#)
- [Newgrounds](#)
- [Ko-fi](#)
- Discord (**doweessig**)
- Email (**sigdrawsstuff@gmail.com**)

Thank you for your interest! ^v^