

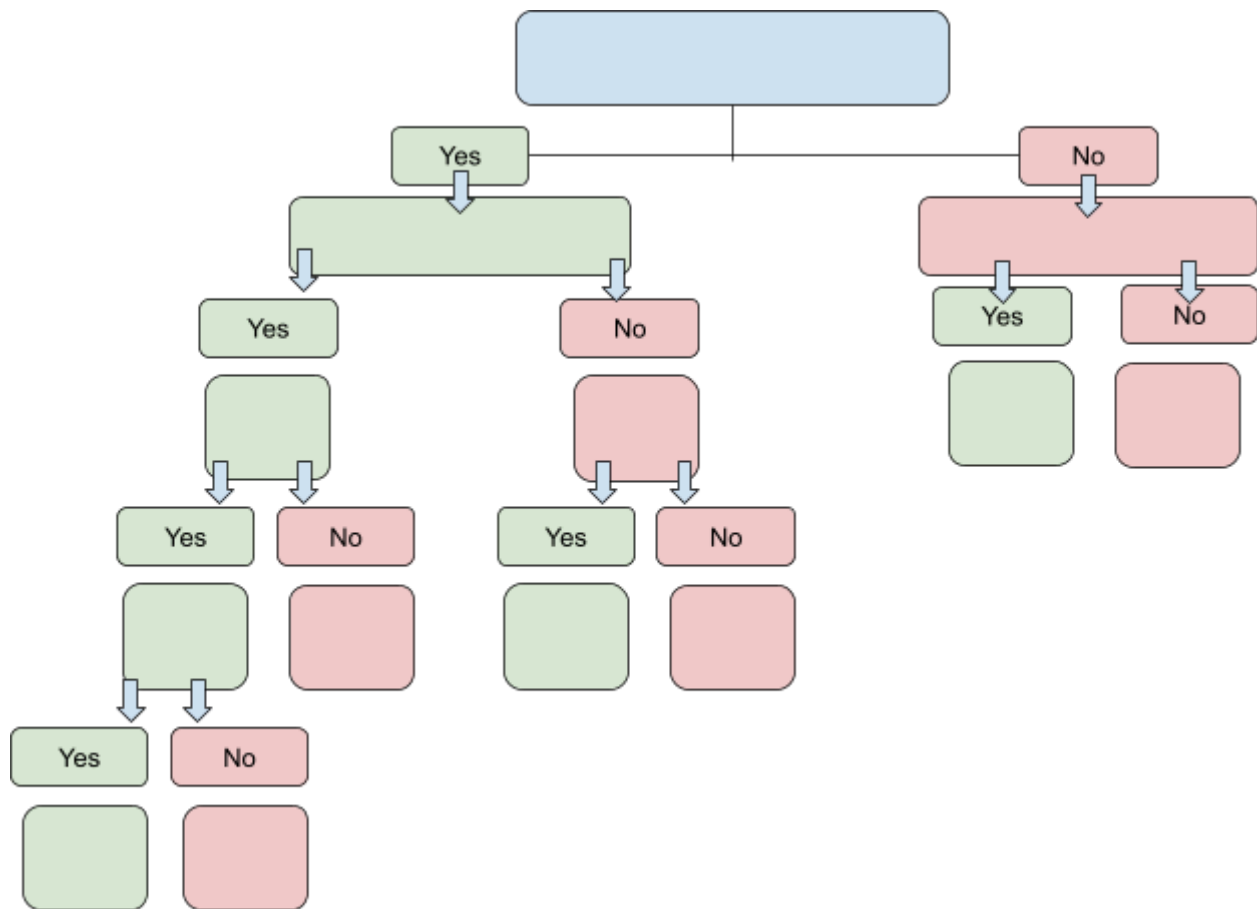
Peer Counseling 1 Module 2 Assignment  
**2.03 Decisions, Decisions Option 2**  
**Choose Your Own Story**

**Use descriptive academic language with correct grammar and detailed information to convey a clear understanding of the content.**

**Part one:** Design a decision-making tree where readers see how different choices lead to different results. Your tree will help others understand how their decisions affect outcomes and how stress influences their choices. Your tree should:

- Show how different decisions lead to different results with multiple paths

Double Click Tree Below to Edit:



**Part two:** Include at least one credible health resource or expert source that supports your thinking for this assignment, and explain why this source is reliable. Include the entire link.

[Click here for some tips for finding reliable sources](#)

Source Hyperlink	2 Sentences on how it supports your thinking	2 Sentences on why this source is credible

**Part three:** Answer two of the four questions below with 2 or more sentences each

1. How did this project help you understand your quick reactions versus your careful thinking?
2. What did you learn about how different things affect your decisions?
3. What are some short-term and long-term outcomes (consequences) of your decision above?
4. What other areas of your life could you use a decision tree for?