
Instructions on TC005:

Aligning Infrared and Visible Images

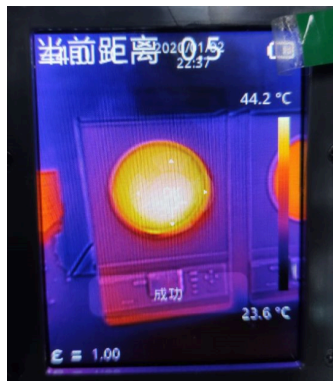
To align infrared and visible images on TC005, please follow the instructions below:

1. Power on the TC005 device.
2. Get to the home screen. Press and hold the left arrow key for one second, and then hold and press the down arrow key (without releasing the left arrow key) until a new screen appears.
3. Release both the left and down arrow keys.

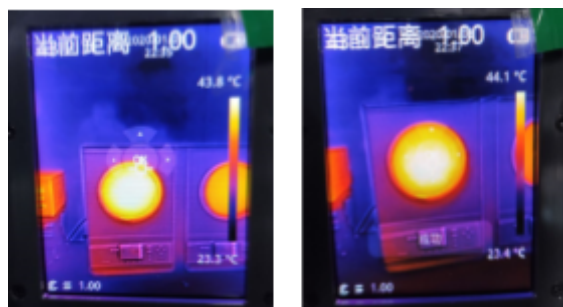


4. **0.5m alignment:** Point the TC005 device to a thermal source at the distance of 0.5 meters.
5. Adjust the visible image and the infrared image by pressing the arrow keys (up, down, left & right) until the two images totally overlap.

-
6. After aligning the two images, press the OK key in the middle. The screen will show “Success”.



7. **1m alignment:** Move the TC005 device or the thermal source to adjust their distance to 1 meter.
8. Press the right arrow key. The screen will show the current distance has changed to 1.00.
9. Adjust the visible and infrared images by pressing the arrow keys (up, down, left & right) until the two images totally overlap.
10. After alignment, press the OK key in the middle. The screen will show “Success”.



11. **1.5m to 3m alignment:** Repeat the step 8 to complete the

alignment of visible and infrared images at the distance of 1.5m / 2m / 2.5m / 3m one by one.

12. Press the back key to get to the home screen.
13. **Alignment verification:** Point the TC005 device to a new thermal source, and keep them at the distance of 0.5m / 1m / 1.5m / 2m / 2.5m / 3m one by one.
14. On the home screen, select “Image Mode” > “Alignment Distance” > “0.5m” / “1m” / “1.5m” / “2m” / “2.5m” / “3m”.
15. Check if the effect of alignment at each of these distances is ok. (This is to see if the visible image and the infrared image being captured at each of these distances totally overlap.)

