



PSYC 1101 Wo1 – Introduction to General Psychology (3 credits)
Kennesaw State University, Department of Psychological Science
Summer Semester 2024

Instructor Information



Professor: Danica Kulibert ([pronounce](#))
Office: SO 2015
Office hours: By Appointment ([BOOKING LINK](#))
E-mail: dkuliber@kennesaw.edu
Department: Psychology Science (SO 4030); 470-578-6225

Catalog Description

This course is an introduction to the theoretical and scientific study of behavior that emphasizes historical and current theories, methods, and research findings related to the influences of biological, cognitive, and social factors on behavior.

Modality: 100% Asynchronous Online

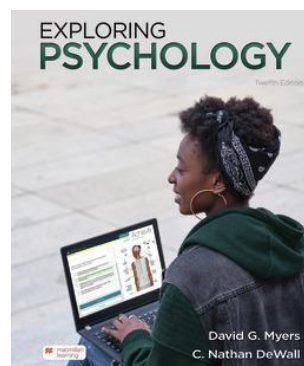
Prerequisites: None

KSU's General Education Program:

PSYC 1101 satisfies one of Kennesaw State University's general education program requirements. It addresses the Social Sciences general education learning outcome(s). The learning outcome states: Students analyze the complexity of how historical, economic, and political relationships develop, persist, or change. For more information about KSU's General Education program requirements and associated learning outcomes, please visit the [KSU Undergraduate Catalog](#).

Required Text

Myers, D. G., & DeWall, C. N. (2022). Exploring Psychology (12th ed.). New York: Worth Publishers.



Other Required Materials:

Achieve (an external program supplied by the publisher with textbook related activities) is required. Detailed information about purchasing this program and technical support is provided in D2L.

Technology requirements:

To successfully engage in and complete this course, you must have access to the following technology:

- a Windows or Mac computer that is operable and virus free (other devices, such as Chromebooks, tablets, or phones, are not compatible with some software required for completing course assignments)
- a working and properly configured webcam and microphone connected to your computer
- reliable, high-speed internet access (a wired connection is often more reliable than WiFi, even on your home network)
- in addition to your primary computer/internet access, you should have two backups and a workable plan for accessing them

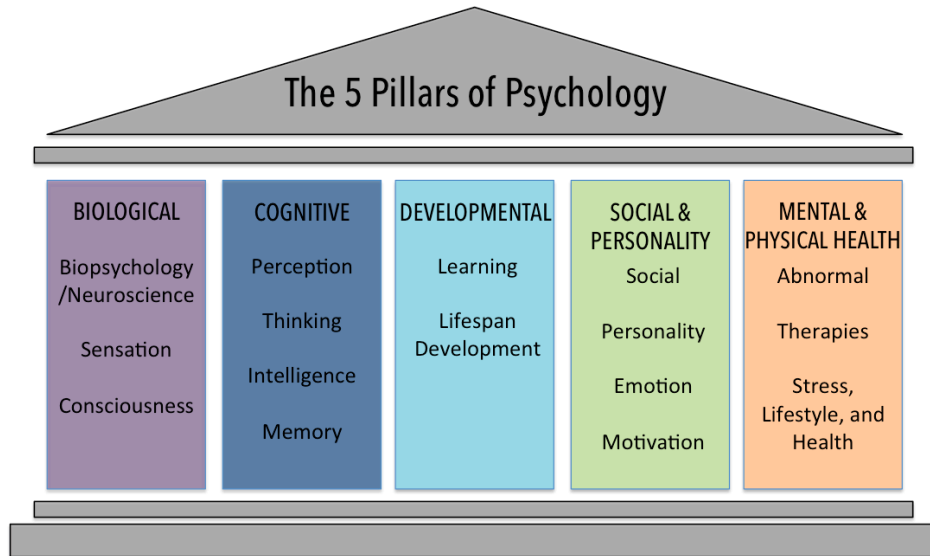
Respondus Lockdown Browser & Monitor:

Respondus Lockdown Browser, which prevents you from opening any additional browsers (other than the one in which your exam/quiz appears) is required. Exams will additionally require Respondus Monitor, which means that a webcam is necessary. **Note that Chromebook laptops are not compatible with Respondus Lockdown Browser & Monitor. If a Chromebook is the only computer you have access to this semester, please contact me at the beginning of the semester.**

General Course Objectives:

This course is broadly designed to enable students to:

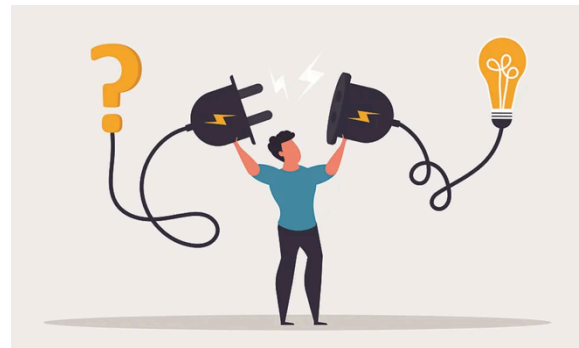
- describe the empirical basis of psychology;
- integrate knowledge across domains (i.e., the bio-psych-social approach);
- recognize & value multiculturalism / diversity issues;
- understand the importance of ethics in psychological science & practice;
- develop and employ critical thinking skills;
- prepare for further study in psychology, whether formally or informally.



Specific Student Learning Outcomes for PSYC 1101

By the end of this class, students should be able to:

1. Identify psychology's historical roots, basic vocabulary & concepts, domains & theoretical perspectives, empirical methods & research findings, integrative themes, and contemporary foci (Knowledge).
2. Describe how psychologists employ the scientific method to investigate questions about behavior, and Articulate the importance of ethics in both psychological science and practice (Research Methods).
3. Think like a psychologist; that is, Adopt a psychological approach to studying, analyzing, and understanding behavior (Application).
4. Recognize that psychological, biological, social, and cultural factors jointly influence behavior, and Illustrate how those interactions contribute to our understanding of and appreciation for diversity issues and multiculturalism (Integration).
5. Engage in substantive discussions of psychological concepts, issues, and applications (Communication).
6. Evaluate how the knowledge acquired in this class can facilitate personal growth, and help individuals successfully navigate both their personal and professional life (Personal & Professional Development).



Email Communication

My preferred form of communication is email. Using my outlook email (dkuliber@kennesaw.edu) is the most effective way to communicate. I do not check D2L as often, so if you email me via D2L and have not heard back from me within 48 hours, please reach out again. If you have a general question (i.e., a question that is not “private”), please post it to the “Course Q & A” discussion as others may have the same question and could benefit from the answer I provide. Important note about D2L email: D2L CANNOT receive email from anywhere other than its own internal email program. Anything you attempt to send to D2L

email from any other account (e.g., a textbook companion site, your KSU email account, Yahoo, Gmail, etc.) will get LOST IN CYBERSPACE.

I will check email at least once each weekday and will, in most cases, respond within 24 hours. Email and questions posed through the discussion board over the weekend will, in most cases, be responded to by Monday morning.

Important Note

Throughout the semester, I will be monitoring your progress and performance in this course. I will contact students via email if I have any concerns about your performance and arrange an online meeting if necessary to discuss those concerns. Also, students are encouraged to contact me to discuss any concerns you might have about their performance in this class. Of course, students can contact me with questions and/or comments about any aspect of the class whenever you wish. I will make every effort to reply to student emails within 24 hours (and often much sooner).

Contacting Your Classmates

If you would like to communicate with your classmates, you can either use D2L e-mail or the “Student Lounge” discussion board set up for this purpose. Although not a graded area of the course, professionalism, academic integrity, netiquette, and all course policies and procedures are in effect. I will monitor the discussions to the extent necessary to ensure an appropriate atmosphere is maintained.



Internet, Desire2Learn, and Email Access

Please note that computer/technical problems **DO NOT** excuse you from completing course assignments on time. The quizzes/exam and discussion questions are available for extended periods of time. There are public computers available for your use at many locations, including the KSU computer labs. You are responsible for checking D2L and your KSU email address daily.

Syllabus Policy

The course syllabus as well as other documents (e.g., course schedule, relevant policies, grading rubrics, assigned readings, etc.) will be followed as closely as possible. However, the course syllabus, schedule, policies, and procedures are subject to change at the discretion of the instructor or in the event of extenuating circumstances. To the extent possible, changes will be announced in advance via Desire2Learn by the instructor.

Other Course Policies and Documents

Essential online course information and instructor policies are located on the course homepage under “Orientation: Start Here” and “Administration” *You are required to submit via the appropriate discussion board a statement indicating you have read the syllabus and all policies and procedures and agree to abide by all of them. A sample statement is included at the end of this syllabus.

Assignment Deadlines

Although this is an asynchronous online course that offers much flexibility in term of when you 'attend' and work on various class activities & assignments, you should be aware that we have regular deadlines throughout the term. Again, the deadlines posted do **NOT** indicated the day that you **must** complete course assignments but, rather, the **last** day that you can do so for credit! Please refer to the following assignment descriptions and the course schedule (separate document) for additional / specific details. Unless otherwise specified, the deadline for all activities and assignments is always **11:59 PM ET** on the day listed in this syllabus / the date posted in the course schedule.



Course Requirements (Activities & Assessments)

Upon Enrollment: Students should carefully review all the course documents and announcements posted to date. Familiarize yourself with the course layout and navigation in D2L/Brightspace. Submit your "Syllabus Review Statement" (see below) in the appropriate discussion forum. Please also visit the Student Introductions discussion forum and "introduce" yourself to the class. Additional instructions for student introductions are provided in the relevant discussion forum.

Online Discussions (100 points total):

Participation in class is an essential component the learning process, and that is especially true an online course. Participation credit will be awarded in each chapter (10 points/chapter) based on my assessment of your contributions the class discussions hosted on Flip (<https://flip.com/ae99c98d>). Please note that you must post during a unit period to receive credit for that chapter discussion - "late" posts (i.e., in subsequent units) are welcome but will not earn credit.



of
in
to

I will post discussion topics and you will record responses to the discussion prompt (set to 3 minutes max). Your initial responses to the discussion topics should be posted on or before the 5th day of the unit in order to generate additional discussion by the last day of the unit. You are also required to respond to at least 5 other posts across 2 or more days by the end of the unit. A specific discussion/participation rubric is available in our D2L classroom.

Only by being active on the discussion board – posting on time, responding to my prompts, replying to the posts of other students, and generating/engaging in discussions outside of the topics I provide – will you be able to master the material and earn full credit for participation each week.



Achieve Learningcurves (100 points total)

For each chapter, you will be required to complete 2 chapter Learningcurve activities from the MacMillan Achieve website. Each Learningcurve has a target score. You are asked to obtain the target score to get credit. Due dates for these activities are listed at the end of the syllabus. Your lowest 4 scores will be dropped. It is strongly suggested that you complete the assignments early – that is, do not wait until the night before they are due to complete them.

Chapter Quizzes (200 points total):

The course material is divided into 12 chapters and, consequently, 12 quizzes. You will be required to complete a quiz during each chapter according to the schedule listed in this syllabus. All quizzes will be delivered online in D2L and links to each quiz will be available in the appropriate learning module folder. The quizzes will generally be posted by the 5th day of each course units and must be completed by the last day– no make-up quizzes will be authorized unless arrangements are made with me prior to the last day of the scheduled course week.

Each quiz is open book/open notes, covers a single chapter, is worth 20 points, and consists entirely of multiple-choice questions. Additionally, all quizzes will be timed – you will have 60 minutes to complete each quiz. You will not be allowed to submit or revise any of your answers once the time limit is reached. Finally, you will be allowed two (2) attempts to complete each quiz and only your highest score will count toward your final course grade.

Note: You will have an opportunity to complete 12 quizzes this term, but only 10 will count; the lowest 2 quiz scores will automatically be dropped in the calculation of your course grade.

Unit Exams (200 points total):

We will have 3 online unit examinations this term, each worth 100 points. The exam questions will be light on definitions and heavy on applying concepts. These assessments will cover concepts from posted lectures, supplementary content, and other learning module materials. These exams will include multiple-choice and short-answer questions, and are timed – you will have 120 minutes to complete each exam. I will drop your lowest exam score, which means I will not allow you to make up missed exams.

Note: You are not allowed to use any materials or technology to assist you in completing these formal assessments, so we will employ the Respondus LockDown Browser + Webcam to monitor your exam environment and test sessions. If there is evidence of cheating on an exam, students will receive a zero on that exam.



Final Project (100 points total)

For your final project, you will be required to give a presentation on a specific movie. During the first week of class, you will be able to pick from 1 of 20 movies. You will watch the movie and then give a 5-7 minute presentation connecting the movie to 3 concepts from the course. You will be required to film your

presentation and submit it to me for grading. A detailed rubric and example can be found on D2L.

Online Assessments Policy:

If, for any reason, you are unable to complete and submit an assessment, you must contact me immediately via email with an explanation. If warranted, I will reset a quiz or exam attempt and you will be required to retake the assessment within **five (5) hours** of the time stamp on my reply to your email message. Under no circumstances will a failed or aborted attempt excuse you from meeting the posted deadline... and absolutely no attempts initiated within the last five (5) hours of the quiz/exam availability period will be reset. Please note that no assessments in this course will allow you to save and submit responses after the expiration of the allotted time limit.

Extra Credit

I offer one form of extra credit over the semester and you can earn up to 35 points of extra credit. To earn extra credit, you have to share with me an example of a psychological concept via a TV show, movie, TikTok, Reels, or Twitter Thread. These cannot be videos or articles about psychology. Instead, they should be everyday examples of the concepts we discuss. You must also explain what concept is being demonstrated and how it helped you/others understand the concept. Each example can earn you up to 7 points and you can submit up to 5 examples.

	Full points	Partial Points	No Points
Submitted Example	Student provides link to example and the example is appropriate (2 points)	Student provides link to example, but example is not completely appropriate (e.g., clearly define the concept in the video) (1 point)	Student does not provide link to example or example is not an example but an educational video on a concept instead or example is not appropriate for concept student is claiming (0 points)
Definition of Concept	Student defines concept well and ties it to the example provided (2 points)	Student defines concept but misses some information or does not tie back to example well (1 point)	Student does not define concept appropriately (0 points)
Reflection of Video	Student clearly states how the example helped them understand the concept more or how it could help others understand the concept more (3 points)	Student touches on how the example could help them or others understand the concept but the connection is unclear or hard to follow. (2 points)	The example and/or the concept or not defined well. How the example connects to concept is not clear at all or is not appropriate (0 points)

Course Grading

Graded Activities	Points
Exams (3/4)	200
Exam 1	100
Exam 2	100
Exam 3	100
Final Project (1/1)	100
Quizzes (10/12)	200
Discussions (10/12)	100
LearningCurves (20/24)	100
Total Possible	700

Note: To determine your grade at any point during the semester, simply add the points you have earned and divide by the total number of points that are possible for those completed assignments. Then multiply the total by 100 to determine your percentage grade.

Grading Scale	Points	Description
A (90 – 100%)	630-700	Excellent
B (80 – 89%)	560-629	Very Good
C (70 – 79%)	490-559	Average
D (60 – 69%)	420-489	Below Average
F (59% or Lower)	≤ 419	Failing

Policy on AI Use, Required (University Statement)



You will be expected to use AI generative tools in this class, following the instructor's permissions and directions, and only using it on assignments where AI tools are allowed. However, you should note that all AI generative tools still tend to make up incorrect facts and fake citations, code generation models tend to produce inaccurate outputs, and image/art generation tools can produce copied work or offensive products. You will be responsible for any inaccurate, biased, offensive, or otherwise unethical content you submit regardless of whether it originally comes from you or an AI tool. If you use an AI tool, its contribution must be credited in your submission. The use of an AI tool without acknowledgment is cheating and constitutes a violation of the KSU Code of Academic Integrity. For additional examples, see

[Classroom Policies for AI Generative Tools.](#)

Late Work / Missed Deadlines:

Missing any of the assignment deadlines listed herein may prevent your successful completion of the course. If you foresee difficulty of any type (i.e., hospitalization, employment change, etc.) that may prevent completion of this course, please notify me as soon as possible. Failure to do so will result in failure for an assignment and/or failure for the course.

If I have not heard from you by the **posted deadline date for any discussion, quiz, assignment, or exam**, no make-up work will be allowed (unless extraordinary and documented circumstances exist). Requests for extensions should be made in advance and accompanied by appropriate documentation. If the excuse is deemed to be valid and acceptable, any make-up work must be completed within one (1) week of the original deadline unless your specific circumstances clearly warrant an additional extension.

Plan to complete all course discussions, assignments, and assessments *at least* several hours prior to the posted deadlines. By electing to wait until the "last minute" to complete these assignments, you may invoke **Murphy's Law** ("If anything can go wrong, it will").

Note: Technical difficulties of any sort are never an acceptable excuse for missing course deadlines.

Grade Appeals / Policy

If, for any assignment, you feel that the grading policy was unfair in some way, then you must make your case to me in writing via email. I will not respond to verbal complaints about grades. These emails must be received within one (1) week of the posting of your grade; do not wait until the end of the semester.

Once computed and verified, all course grades are final and will not be changed. Every semester, a student approaches me with a request that I raise their grade (because they will be placed on probation, because they will lose their Hope scholarship, because they won't be able to graduate as planned... or be accepted into graduate school, & etc.). Please do not ask me to change your grade and know that I have never adjusted a student's grade for any reason. Changing a student's grade to one that was not earned is unethical on my part and unfair to other students.

Incomplete Grades:

A grade of "I" indicates an incomplete grade for the course, and will be awarded only when the student has done satisfactory work up to the last two weeks of the semester, but for nonacademic reasons beyond his/her control is unable to meet the full requirements of the course. In other words, the grade of "I" is only awarded for emergencies and not for academic difficulty.

The specified time limits to have an "I" grade removed are as follows:

- The course requirements must be completed, as agreed upon between the student and the faculty member, by the end of the next semester or term student is enrolled in order for the grade of "I" to be removed.
- If the student fails to enroll within one calendar year from the end of the semester or summer term in which the "I" was originally assigned and does not complete the course requirements, then the "I" will be changed to an "F".

The "F" grade is assigned for a course which awards letter grades of "A", "B", "C", "D", or "F") and the cumulative and adjusted grade point average will be recalculated accordingly or, the "I" will be changed to a "U" (for a pass/fail course which awards a grade of "S" or "U").

Upon completion of the course requirements within the specified time limits, a final grade will be assigned on the basis of the student's total performance. An "I" cannot be removed by re-enrolling in the course.

Department of Psychological Science's Plagiarism Policy

According to Kennesaw State University's Code of Conduct:

Every KSU student is responsible for upholding the provisions of the Student Code of Conduct, as published in the Undergraduate and Graduate Catalogs. The Student Code of Conduct addresses the University's policy on academic honesty, including provisions regarding plagiarism and cheating; unauthorized access to University materials; misrepresentation/falsification of University records or academic work; malicious removal, retention, or destruction of library materials; malicious/intentional misuse of computer facilities and/or services; and misuse of student identification cards. Incidents of alleged academic misconduct will be handled through the established procedures of the University Judiciary Program, which includes either an "informal" resolution by a faculty member, resulting in a

grade adjustment, or a formal hearing procedure, which may subject a student to the Code of Conduct's minimum one semester suspension requirement.

Plagiarism and Cheating

According to the Student Code of Conduct: No student shall receive, attempt to receive, knowingly give, or attempt to give unauthorized assistance in the preparation of any work required to be submitted for credit (including examinations, laboratory reports, essays, themes, term papers, etc.). Unless specifically authorized, the presence and/or use of electronic devices during an examination, quiz, or other class assignment is considered cheating. Engaging in any behavior which a professor prohibits as academic misconduct in the syllabus or in class discussion is cheating. When direct quotations are used, they should be indicated, and when the ideas, theories, data, figures, graphs, programs, electronic-based information or illustrations of someone other than the student are incorporated into a paper or used in a project, they should be duly acknowledged. No student may submit the same, or substantially the same, paper or other assignment for credit in more than one class without the prior permission of the current professor(s).

Specifically within the Department of Psychological Science

Although the Department of Psychological Science supports multidisciplinary and focused scholarly interests, we do not ordinarily allow students to turn in (or modify) a paper from a previous course or use the same paper for multiple courses. Students should meet with their course instructor(s) to clarify individual policies regarding this matter as well as to ensure violations do not occur. Also, refer to the current edition of the *Publication Manual of the American Psychological Association* for specific guidelines on APA format regarding citations and references.

Student-Friendly "How Not to Plagiarize" Web sites

- [Avoiding Plagiarism](#)
- [How to recognize plagiarism](#)

Ethical Principles of Psychologists and Code of Conduct (APA, 2002)

KSU Student Codes of Conduct

KSU Psychology Lab

The KSU Psychology Lab is a resource center with 10 computers that are available on a first-come, first-served basis for students enrolled in psychology courses. For course assignments, students may seek assistance with questions relating to APA style, research and experimental designs, statistical and data analyses, article searches, SPSS, and GRE practice software. Papers will not be reviewed for APA Style; however, students may come to the lab with specific questions. Lab hours are available on the [website](#)

Additional KSU Student Resources

- [The Writing Center](#)
- [Academic Support Services](#)
- [ESL Study and Tutorial Center](#)
- [Career Services](#)
- [Center for Health Promotion and Wellness](#)



- Student Health Services

Student Rights and Responsibilities

Students of Kennesaw State University are entitled to an environment that is conducive to learning and individual growth. To this end, students enrolling at Kennesaw State University assume a responsibility to abide by the policies and regulations expressed in this section. By doing so, students may fulfill their responsibilities and enjoy the exercise of their own rights while also respecting the rights of others.

FERPA (Family Educational Rights & Privacy Act) Policy

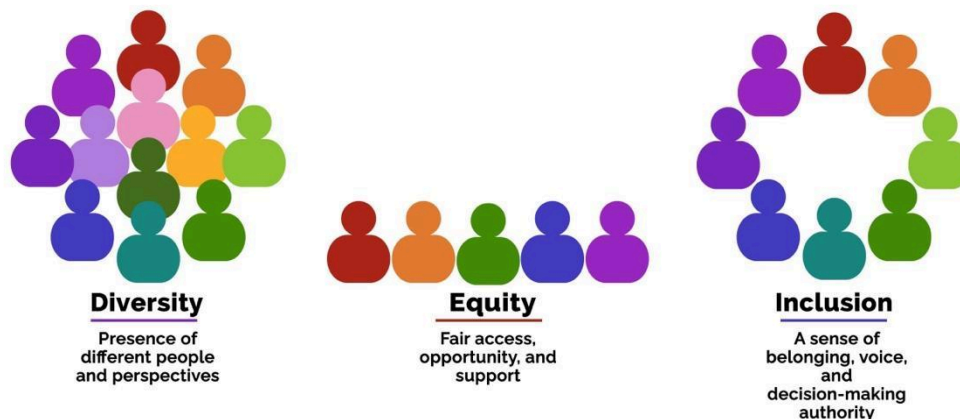
A federal law protects the privacy of student educational records, and affords specific rights regarding the release of such records. Specific information is available from the KSU Registrar's FERPA website.

Disruption of Campus Life Statement

It is the purpose of the institution to provide a campus environment, which encourages academic accomplishment, personal growth, and a spirit of understanding and cooperation. An important part of maintaining such an environment is the commitment to protect the health and safety of every member of the campus community. Belligerent, abusive, profane, threatening and/or inappropriate behavior on the part of students is a violation of the Kennesaw State University Student Conduct Regulations. Students who are found guilty of such misconduct may be subject to immediate dismissal from the institution. In addition, these violations of state law may also be subject to criminal action beyond the University disciplinary process.

Diversity Statement

Consistent with the mission of the university, persons of differing backgrounds and experiences including but not limited to age, disability and health status, ethnicity and race, family structure, geographic region, language, religious/spiritual and secular beliefs, resident status, sex, sexual orientation and gender identity/expression, and socioeconomic status, are always welcomed in this class. It is a course goal to foster an environment in which diversity is recognized and embraced and every person is treated with dignity, respect, and justice. It is hoped that your academic experience in this course and at KSU will provide the opportunity to gain knowledge and experiences necessary to thrive in a diverse, global environment.



Special Needs & Accommodations Statement

Students must provide Disability Documentation by the last day of drop/add. Kennesaw State University complies with Section 504 of the 1973 Rehabilitation Act and the Americans with Disabilities Act of 1990. To request special accommodations, students with a legally defined disability to perform in this academic environment, must take appropriate documentation to the Student Disability Services (SDS). You can contact the SDS office @ 470.578.6443.

When you have completed registration and receive permission for special accommodations for this class with SDS, provide your professor with the appropriate documentation from SDS before the last date of add/drop. This is the only way to receive arrangements for special accommodations. Please visit the [Student Disability Services](#) website for additional information.

Counseling & Psychological Services (CPS)

CPS supports the academic mission of KSU by enhancing students' educational, career, and social development. Counseling encompasses the concept that each individual is considered to have an inherent capacity for healthy, productive functioning. With a philosophy that is anchored in valuing the self –worth of each individual, and where human diversity is both respected and embraced, the objective is to help students recognize their potentials and overcome any obstacles that may be preventing them from developing those healthy behaviors necessary for success. Individuals who have concerns about their mental health, who are struggling with stage of life issues or who are experiencing situationally stressful problems can access mental health services through the CPS center. The CPS center is located in Kennesaw Hall's Suite 2401. Appointments can be made by calling 470.578.6600, or by just walking in. For more comprehensive information about the CPS center, please visit the [CPS website](#).

KSU Athletes

Active members of any KSU Sports team must request that their coach notify this instructor, in writing, of your team commitments and provide a schedule of these events. This is particularly important if you will be missing class throughout the semester due to a sanctioned college related practice, game or tournament. **This information must be received on or before the second week of the term.**

Veterans

Kennesaw State University recognizes the veteran and military men and women striving to receive their education here. Our faculty and staff here at KSU are continuously educating

themselves on the obstacles pertaining to veteran students returning from active duty and transitioning to campus life. The goal is to make the transition and adjustment from their past military lifestyle to a university lifestyle comfortable and for each student to achieve academic success. The Veterans Resource Center, which is located in Room #227 of Willingham Hall is a division of Student Success Services at Kennesaw States University, and provides resources for military veterans. They also support active and reserve military members, in addition to spouses and dependents. The Veterans Resource Center maintains information for campus veteran related resources, links to local military support services, and contacts for local VA facilities. For more information go to their [Military and Veterans website](#).

PSYC 1101 Wo1 – Introduction to General Psychology Course Schedule Summer 2024

Dates	Chapters	Initial Discussion Posts	Discussion Replies	Quiz	Learning-curves
Unit 1					
May 30 th to June 7 th	0: Course Orientation & Overview	-----	-----	-----	----
May 30 th to June 7 th	1: Thinking Critically with Psychological Science	June 3 rd	June 7 th	June 7 th	June 7 th
May 30 th to June 7 th	2: The Biology of Behavior	June 3 rd	June 7 th	June 7 th	June 7 th
May 30 th to June 7 th	3: Consciousness and the Two-Track Mind	June 3 rd	June 7 th	June 7 th	June 7 th
May 30 th to June 7 th	4: Developing Through the Life Span	June 3 rd	June 7 th	June 7 th	June 7 th
May 30 th to June 7 th	Unit 1 Exam – Chapters 1-4 (due June 7 th 11:59 PM)				
Unit 2					
June 8 th to June 16 th	6: Sensation and Perception	June 12 th	June 16 th	June 16 th	June 16 th
June 8 th to June 16 th	7: Learning	June 12 th	June 16 th	June 16 th	June 16 th
June 8 th to June 16 th	8: Memory	June 12 th	June 16 th	June 16 th	June 16 th
June 8 th to June 16 th	9: Thinking, Language, and Intelligence	June 12 th	June 16 th	June 16 th	June 16 th
June 8 th to June 16 th	Unit 2 Exam – Chapters 6-9 (due June 17 th 11:59 PM)				
Unit 3					
June 17 th to June 26 th	12: Social Psychology	June 21 st	June 26 th	June 26 th	June 26 th
June 17 th to June 26 th	13: Personality	June 21 st	June 26 th	June 26 th	June 26 th
June 17 th to June 26 th	14: Psychological Disorders	June 21 st	June 26 th	June 26 th	June 26 th
June 17 th to June 26 th	15: Therapy	June 21 st	June 26 th	June 26 th	June 26 th
June 17 th to June 26 th	Unit 3 Exam – Chapters 12-15 (due June 26 th 11:59 PM)				
June 27 th	Final Project Presentation due June 27 th 11:59 PM				

Other Important Dates:	
May 30 th	First Day of Classes
June 3 rd	Drop/Add Ends
June 12 th	Last Day To Withdraw Without Academic Penalty
June 26 th	Last Day of Classes
June 27 th	Final Exam Day

* This schedule is subject to change at any time, but any necessary modifications will be announced in our D2L classroom