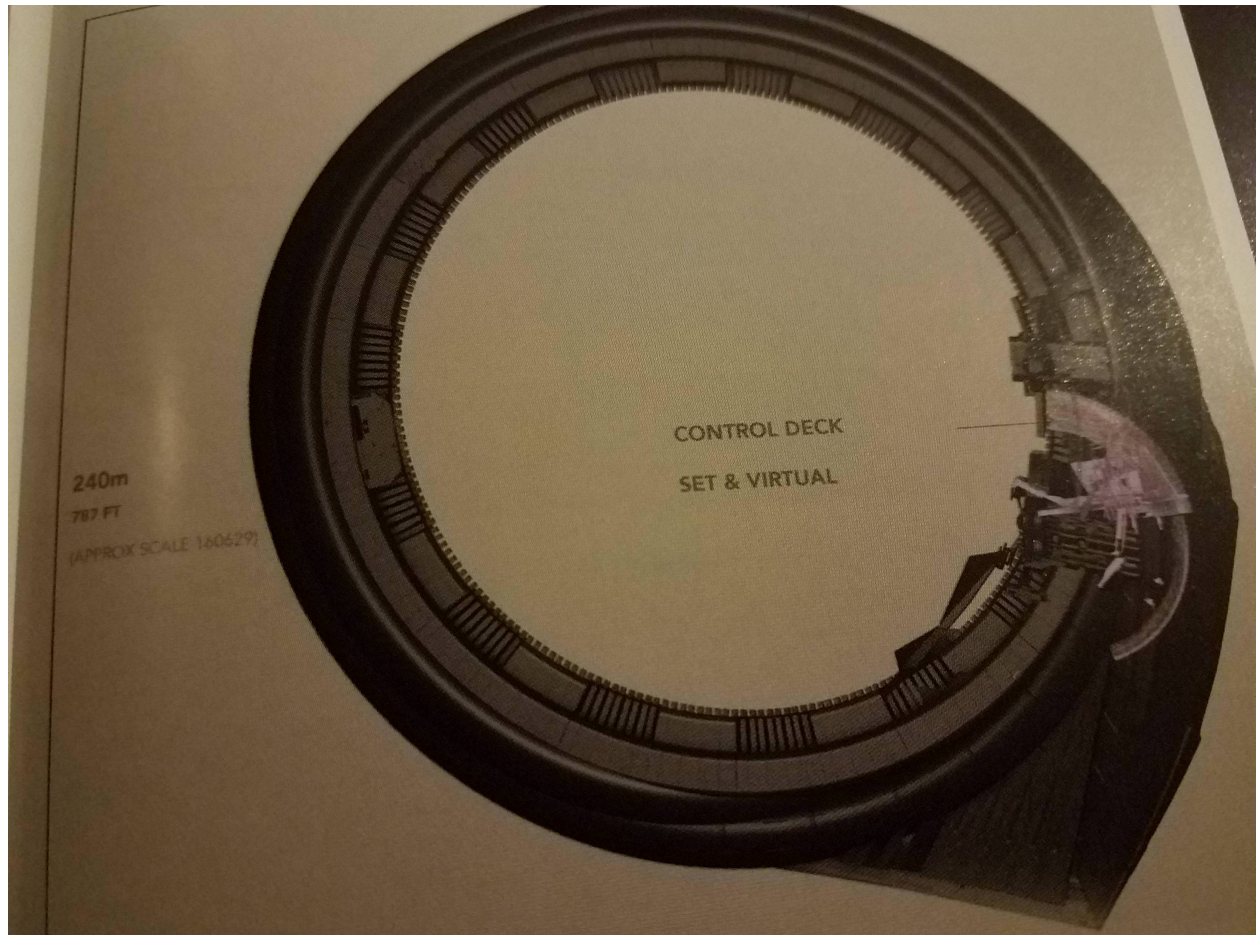
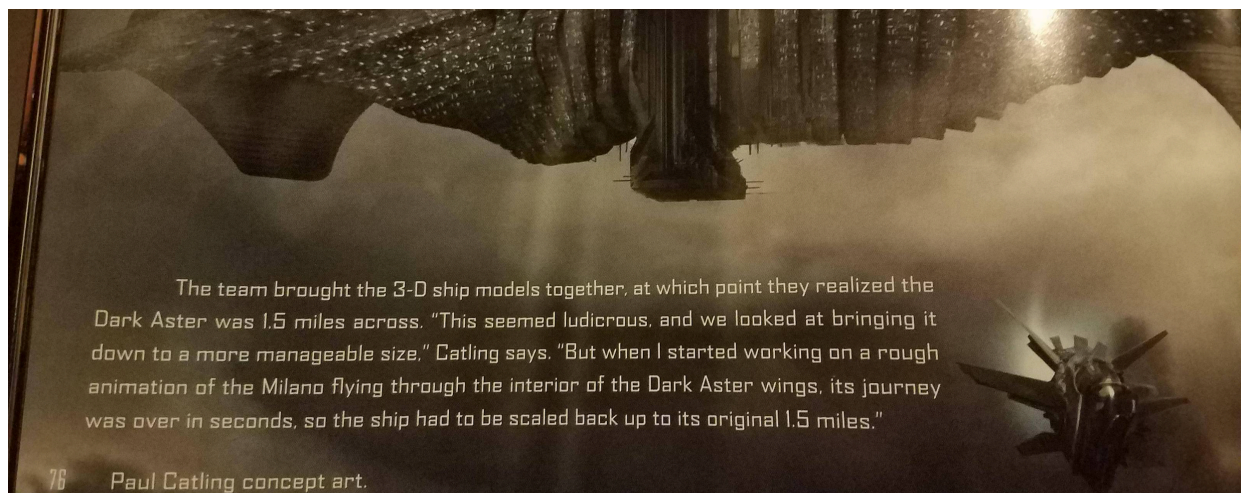


Officially Stated Sizes

Q-Ship

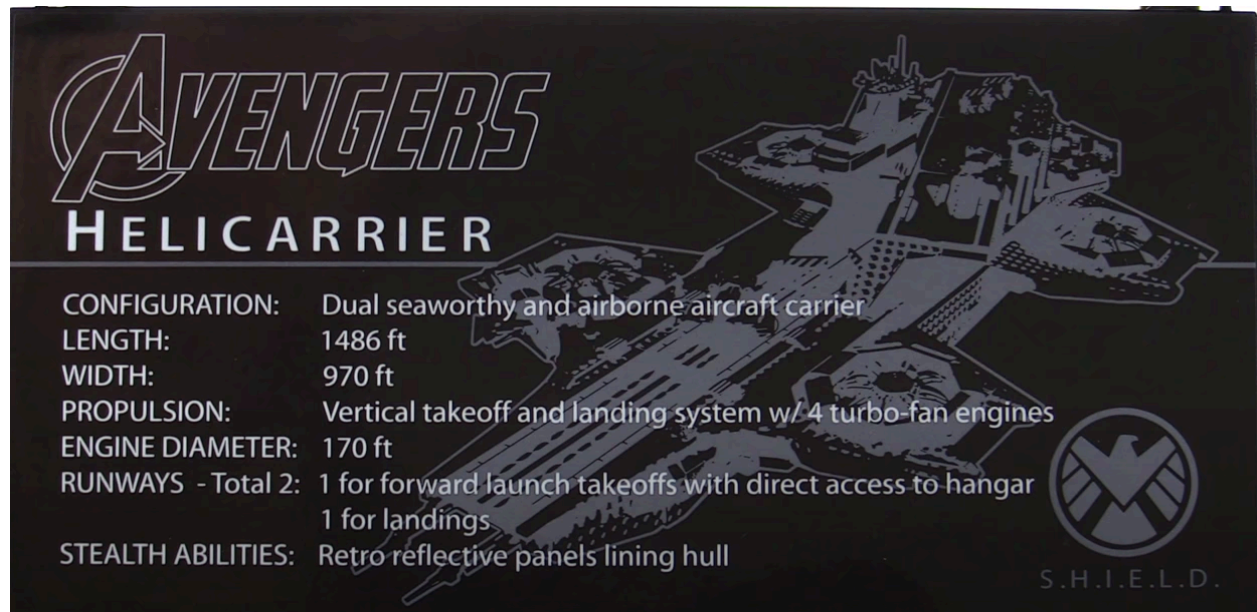


Dark Aster



Note: The Dark Aster is listed as 3 miles wide by the MCU wiki. This comes from a statement in an interview with producer Jeremy Latcham. I have been unable to find this interview, and as this size comes from the official Artbook, I believe it is more reliable. This size of the Dark Aster is also more consistent when scaling to the Milano.

Helicarrier

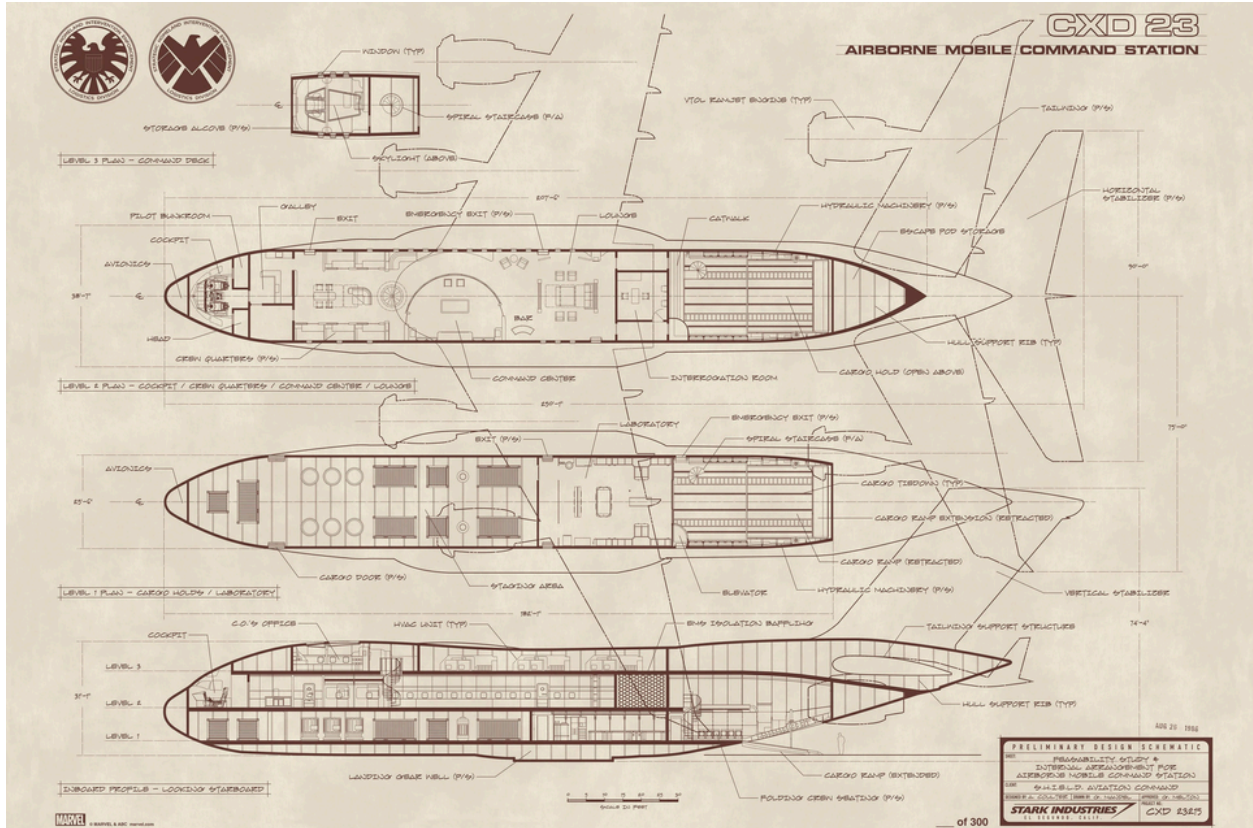


Zephyr One

Stated by VFX supervisor Mark Kolpack

<https://arstechnica.com/gaming/2020/08/agents-of-s-h-i-e-l-d-takes-final-bow-with-high-octane-journey-through-time/>

The Bus



Posted in r/mutantsandmasterminds by u/scarleteagle



Pixel Scaled From Official Sizes

Note: Pixel scaling is less reliable than official statements, and thus these values have a margin of error.

Quinjet

Scaled from the Bus, using this image.



Chitauri Leviathan

Scaled from Iron Man in this image.



Sanctuary II

Scaled its height from a Q-Ship in this image.



Scaled its width from its height in this image.



Eclector

Scaled from the Dark Aster in this image.

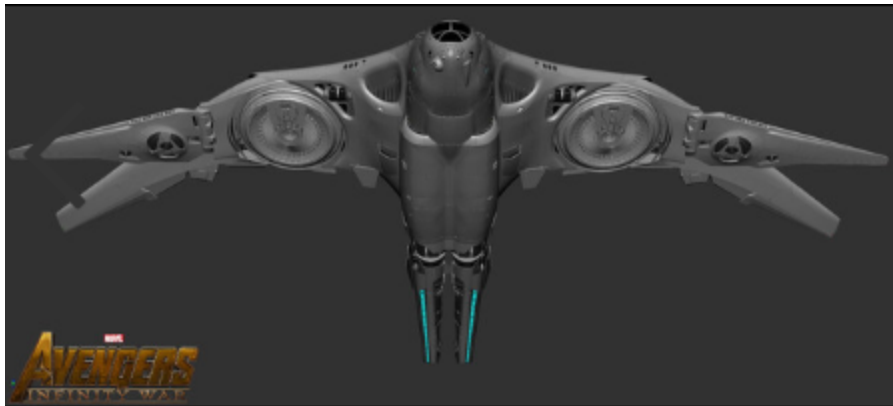


Benatar

Scaled window from Thor.

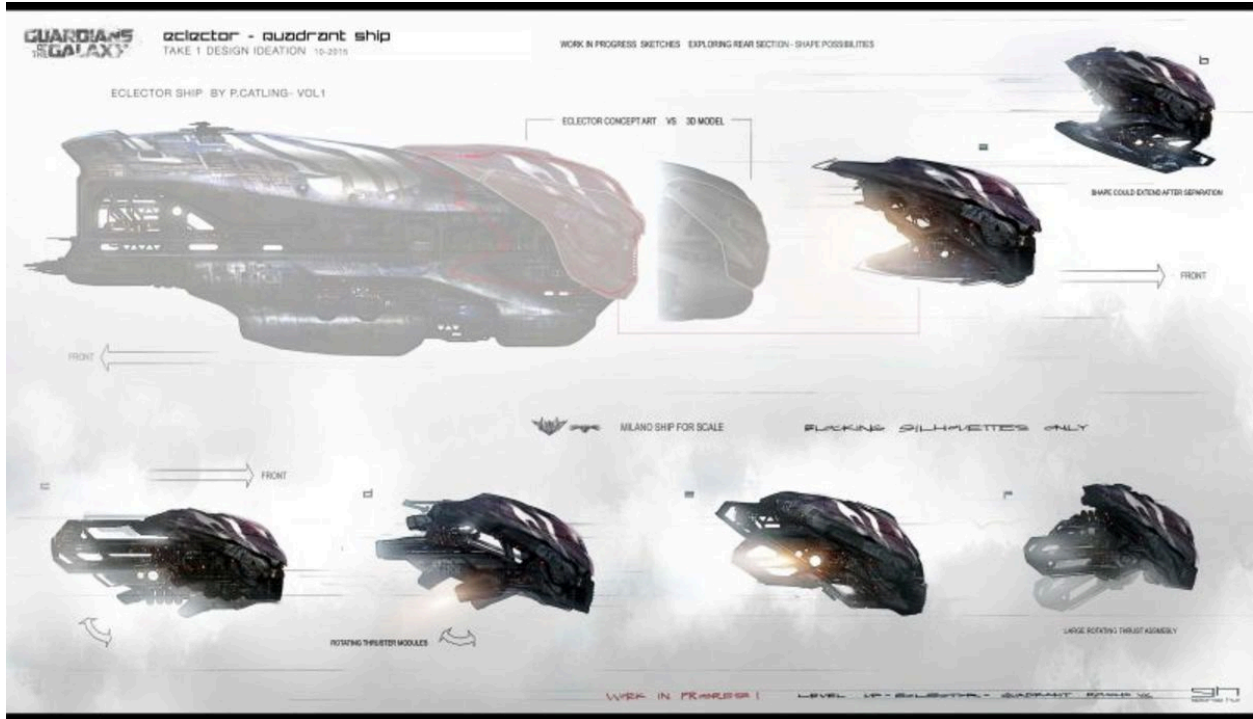


Scaled wingspan from window



Milano

Scaled from Eclector in this image.



Note: The Milano has been stated to be Boeing 777 size, which is extremely consistent with the 72.5 meter value derived from this image.

Confederate Destroyer

Scaled from John Hancock building in this image



Asgardian Skiff

Scaled Thor in this image. (Yeah this one is pretty sketchy), but a later picture gives a clearer view of Thor.



Outrider Dropship

This one is really sketchy. There is almost nothing to scale these ships from, so what I had honestly wasn't great. I did the best I could, I'm sorry! Don't kill me!



Scaled width from door.



Scaled height from width.

Commodore

Scaled from Bifrost in this image.



Dragon Flyer

Scaled from Royal Talon Fighter.



Sizes Provided by Other Fans

Note: I often do not know exactly how these sizes were derived, only that they are seemingly consistent, and often made by dedicated fans like myself.

Ark

<https://forums.spacebattles.com/threads/first-ever-marvel-mcu-ship-size-chart.735553/>

Chitauri Command Center

Pixel Scaled From Fan Provided Sizes

Note: This is the least accurate of all the methods, as I often do not know the origin of these numbers, and pixel scaling increases margin of error.

Credit to:

BhristopherCenn(Spacebattles): Silhouettes of Sanctuary II, Dark Aster
Bobandjim12602(Reddit): Infinity War Artbook images