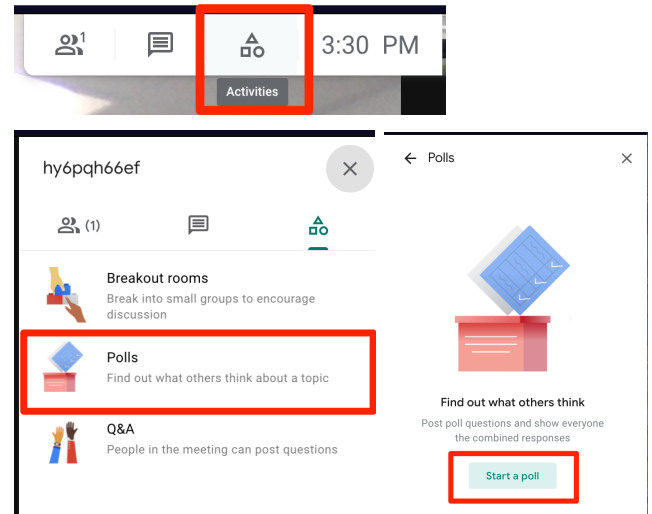


Polls in Google Meet

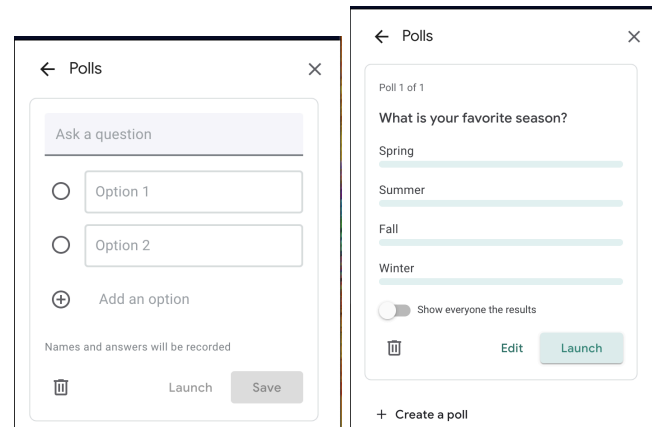
Only the host of the meeting can set up polls.

Does not work with iPads

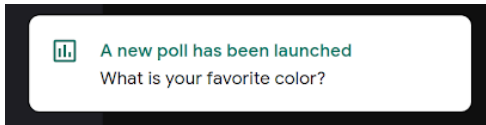
- Click on the activities button in the top right corner and select “Polls” and “Start a poll”.



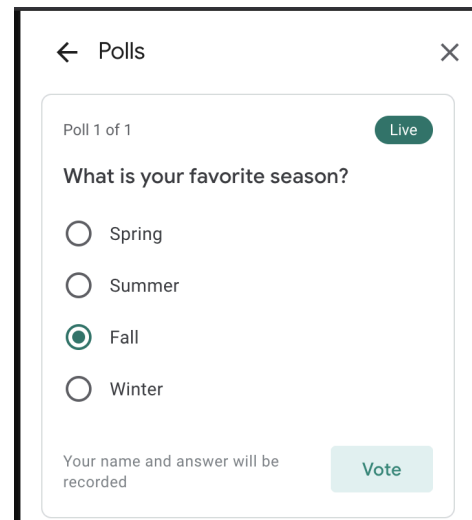
- Enter your question and options. You can add more than two options by clicking “Add an option”
- Clicking “Save” will save the poll but will not make it live for students to respond. You can edit before launching.
- You must click “Launch” to allow students to respond to the poll.



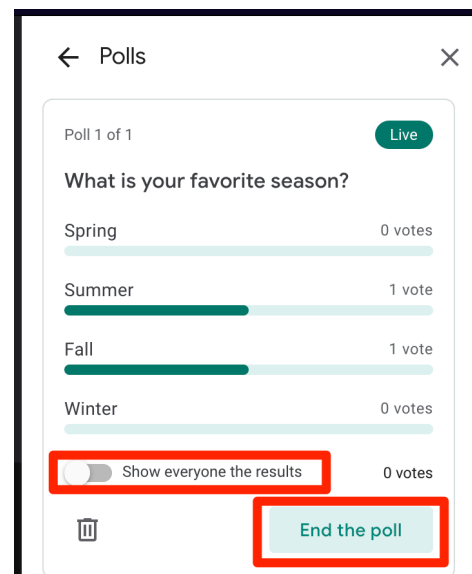
- Students will receive a message that a poll has been launched.



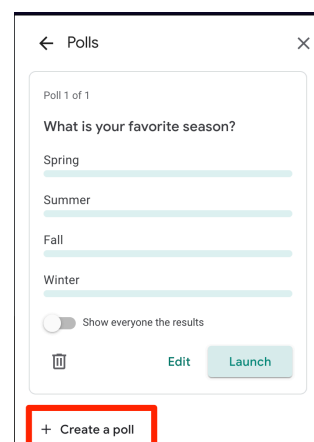
- They will need to go to Activities > Polls to submit their vote.



- As students respond, you will see a graph showing the number of votes for each option.
- If you want students to see the results graph, toggle on "Show everyone the results".
- When finished gathering responses, click "End the poll".



- You can launch multiple polls during a live session. Just click "+ Create a poll" underneath the existing poll to add a new one.



- After the Meet is finished, you will receive an email with the polling results. The subject line will be “Meeting data from...”
- Individual participant responses are shown for every poll launched during that meeting.

Meeting data from 'hy6pqh66ef' on Oct 14, 2020 [inbox x](#)

meetings-noreply@google.com
to me

Info from your 'hy6pqh66ef' meeting on Oct 14, 2020 at 1:05 PM is now available.

[Polling results](#)

[Open in Drive](#)

2 Attachments

2020-10-14 13:05 ...

2020-10-14 13:05 ...

2020-10-14 13:05 hy6pqh66ef - Polling Results ☆ [Share](#)

File Edit View Insert Format Data Tools Add-ons Help [L](#)

100% \$ % .0 .00 123 Default (Ari... 10

	A	B	C
1	Name	What is your favorite season?	What is your favorite color?
2	Demo Account 2	Fall	
3	Mike Jaber	Summer	
4			