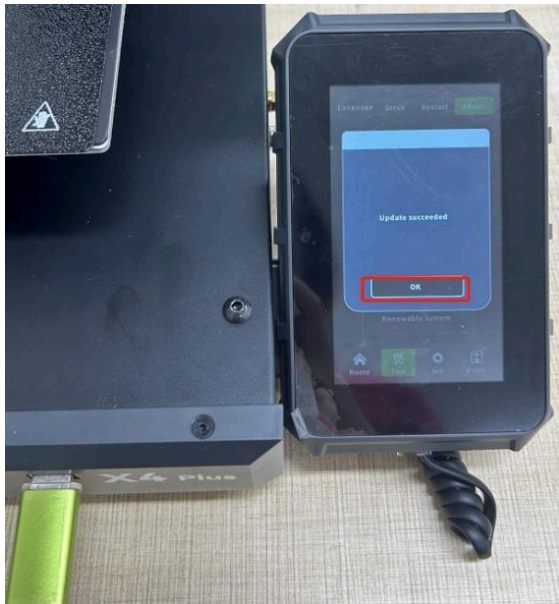


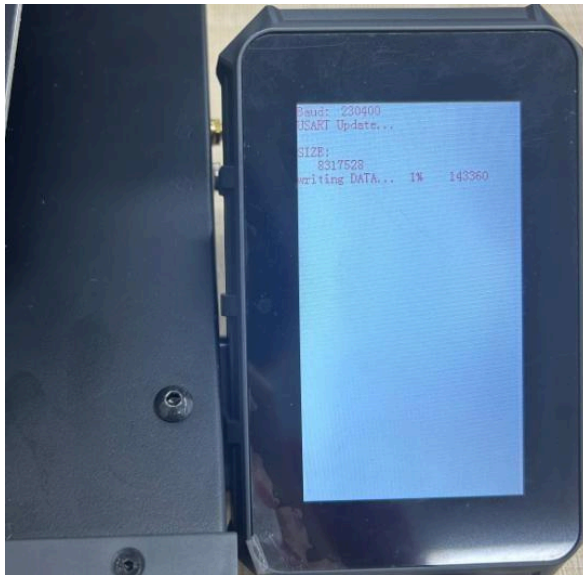
X4_V1.5.0_202407 Version Update Operation Guide



1. Insert the USB drive with the firmware.
2. Click on "Tools" — "About" — "Renewable system" to start the automatic update.



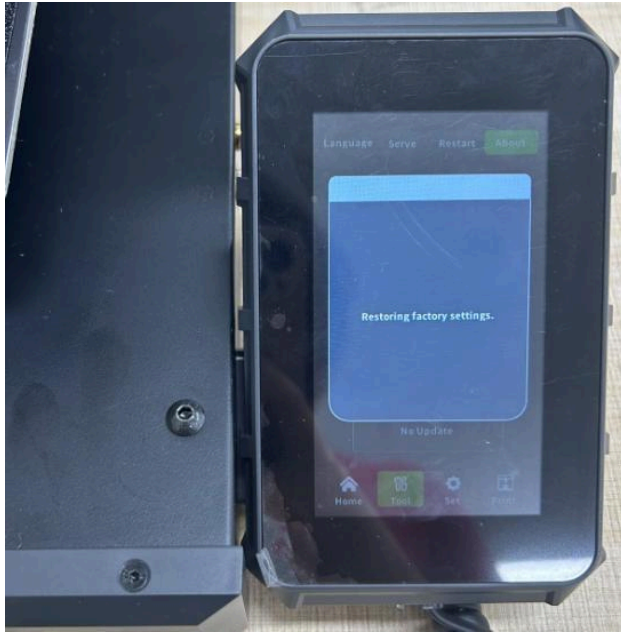
Click "ok"



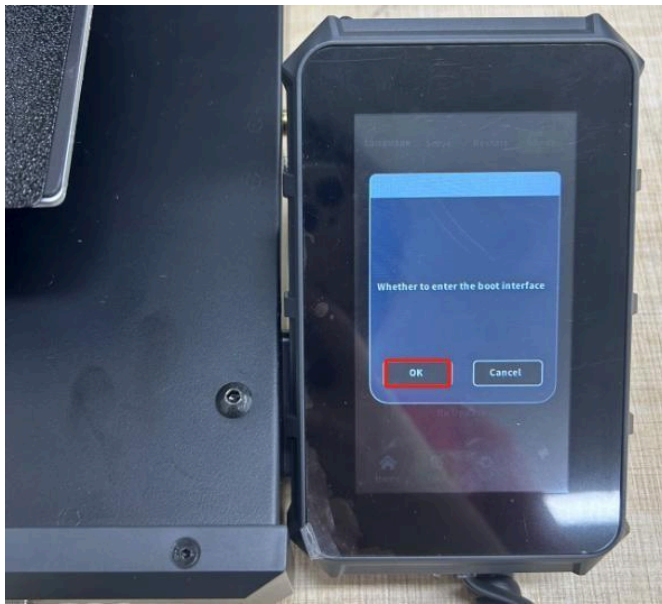
3. Once the automatic update is complete, the device will restart.



4. Restore factory settings: Click on "Tools" — "About" — "Factory Reset" and follow the steps to complete the startup guide.



Factory Settings will be restored



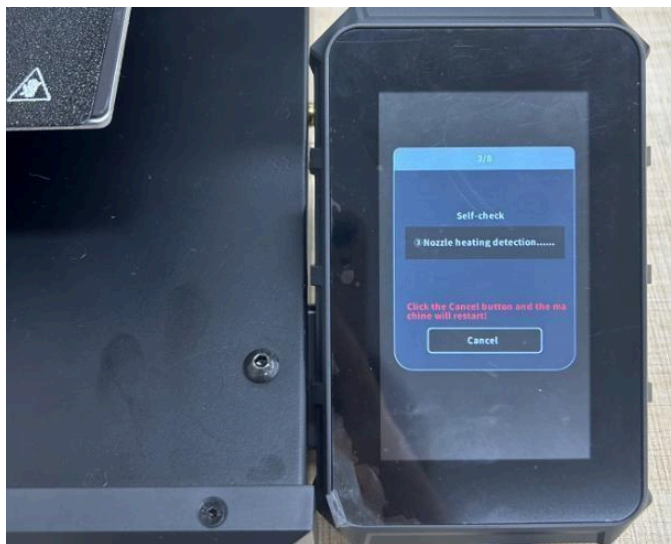
Click "ok"



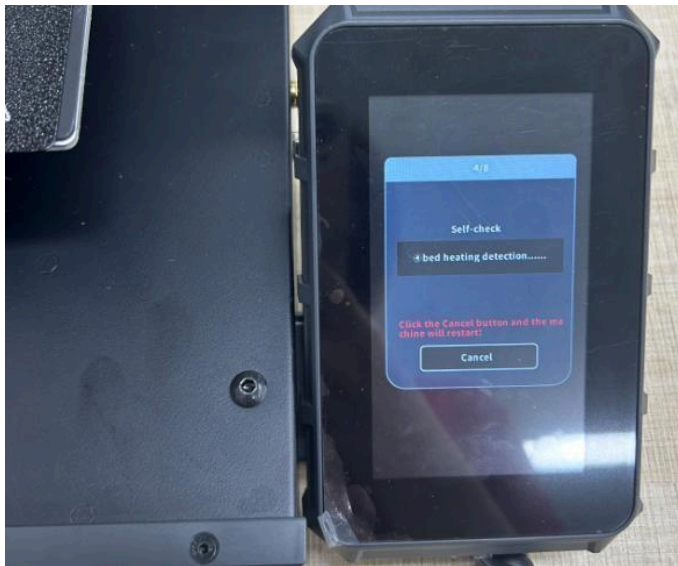
Performs XY-axis inspection



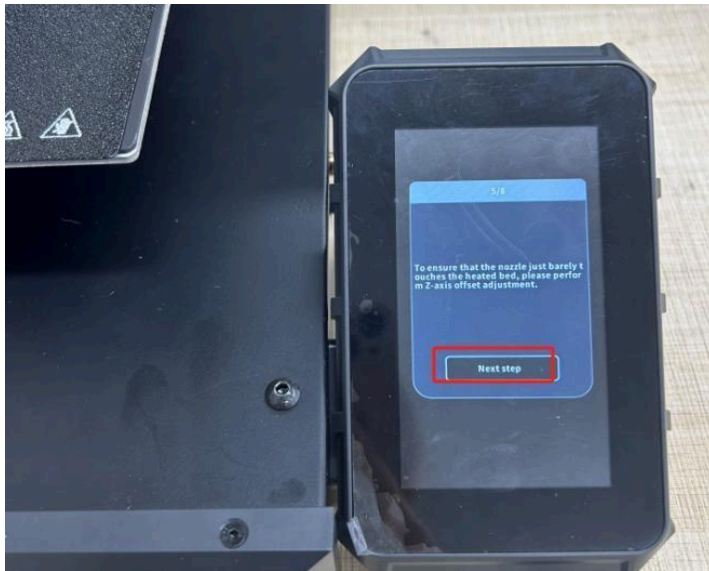
Perform Z-axis inspection



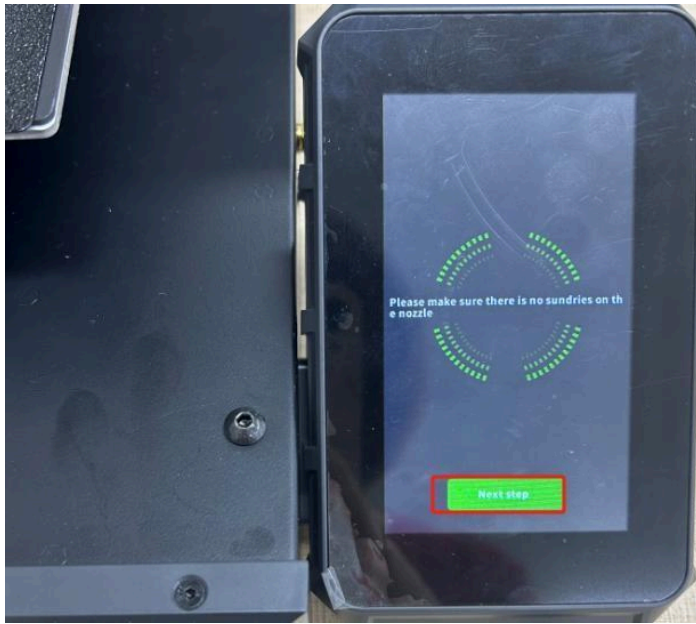
Performs nozzle heating inspection



Performs hot bed heating inspection



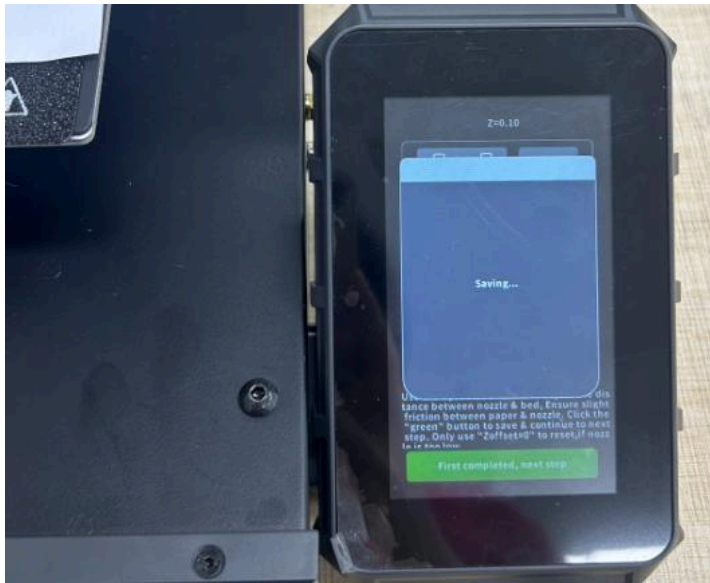
5. Tap "Next step" for Z offset adjustment.



Click on "Next step"



After making the first Z offset adjustment, click "First completed,next step".



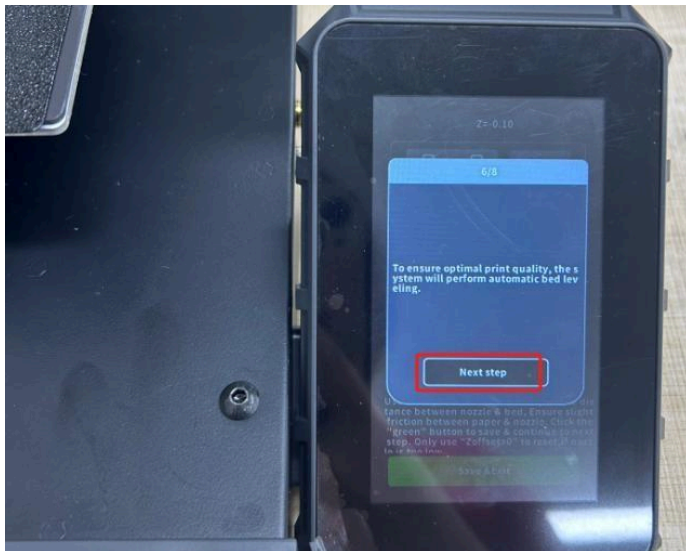
Saved



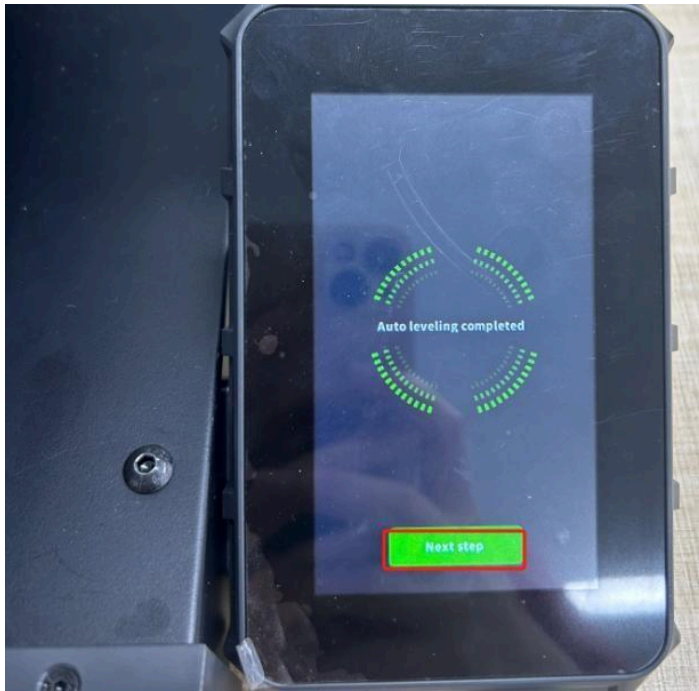
After making the second Z offset adjustment, click "Second completed, next step"



Tap "Save & Exit" after the third Z offset adjustment.



Click "Next step" for auto leveling.



Auto leveling is completed, click "Next step".



Click "Load" to ensure normal feeding and extrusion.



Click on "Next step"



Click on "Finish"



7. Check to make sure the version number is the latest V-1.5.0, then the update is successful.