

Draft Group Type Definitions

Association / Affinity Group: A recognized stakeholder group, outside of the shared governance structure, that formally represents the collective voice and interests of a specific constituency within the PCC community, serving as the primary liaison between that group and the college's governance structures.

Advisory Group: A consultative body that provides expertise, perspective, recommendations, and guidance to support decision-making by formal governance bodies, without direct decision-making authority. Membership based on needed expertise.

Cabinet: An executive-level decision-making body advising the President and/or senior leadership, focused on strategic planning, policy, and implementation.

Committee: A small advisory working group, sitting under a council or standalone, created to address specific areas of institutional operation or policy, with defined charges, providing recommendations to larger governance bodies, and typically include faculty, staff, and student representatives. Each committee is connected to a Cabinet member designee responsible for setting the scope.

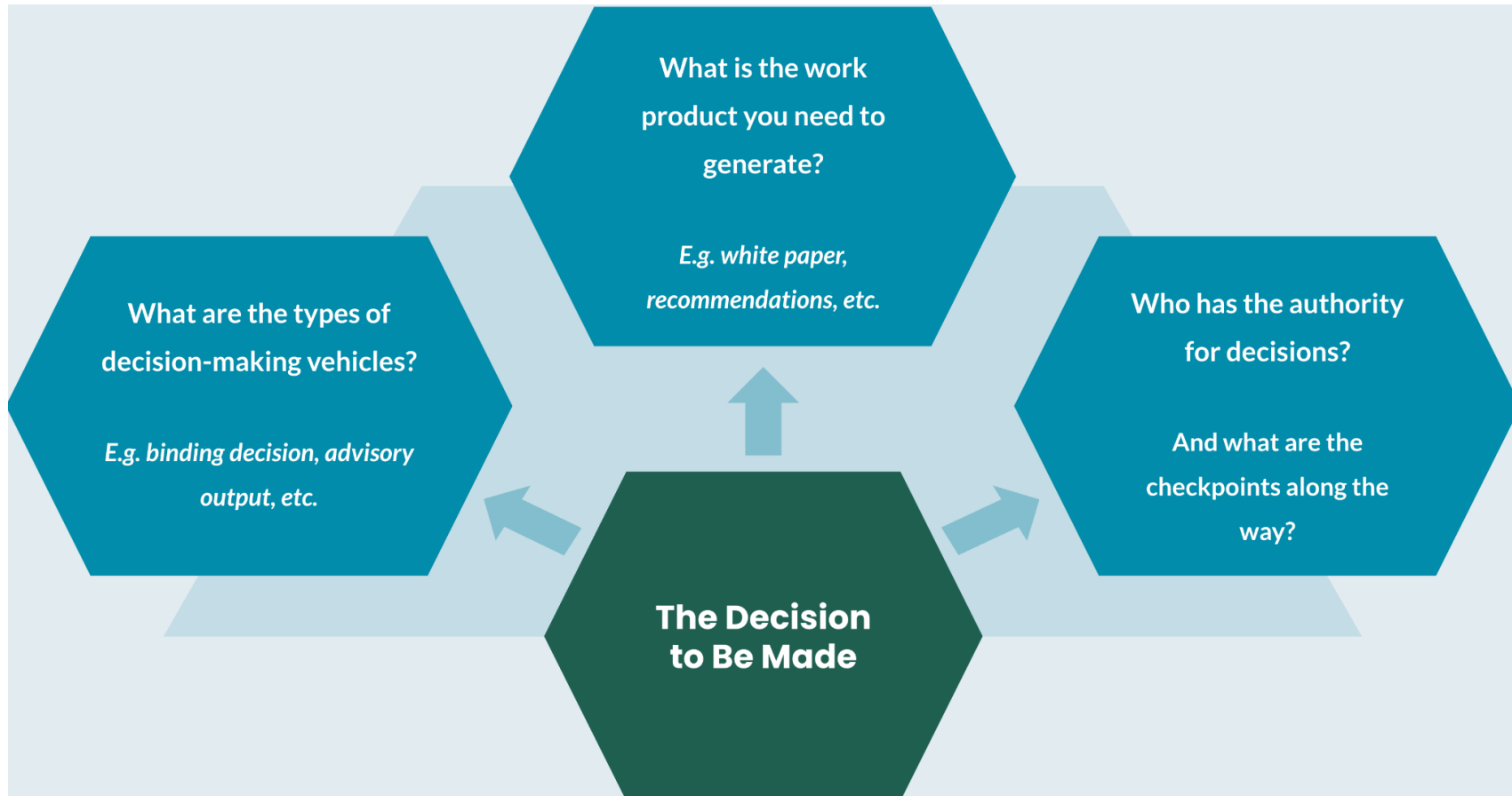
Council: A formal, permanent shared governance body created by Cabinet that addresses evergreen collegewide institutional priorities – ongoing work that transcends specific projects or initiatives – and holds decision-making authority within its designated scope. Membership is strategically composed to represent necessary stakeholders and expertise, often with broad representation across PCC, including voices from faculty, staff, students, and administration.

Implementation Workgroup: A focused group formed to map out a plan for implementation of recommendations, translating decisions or goals into actionable steps with detailed procedures. Includes voices from multiple stakeholder groups, prioritizing relevant expertise.

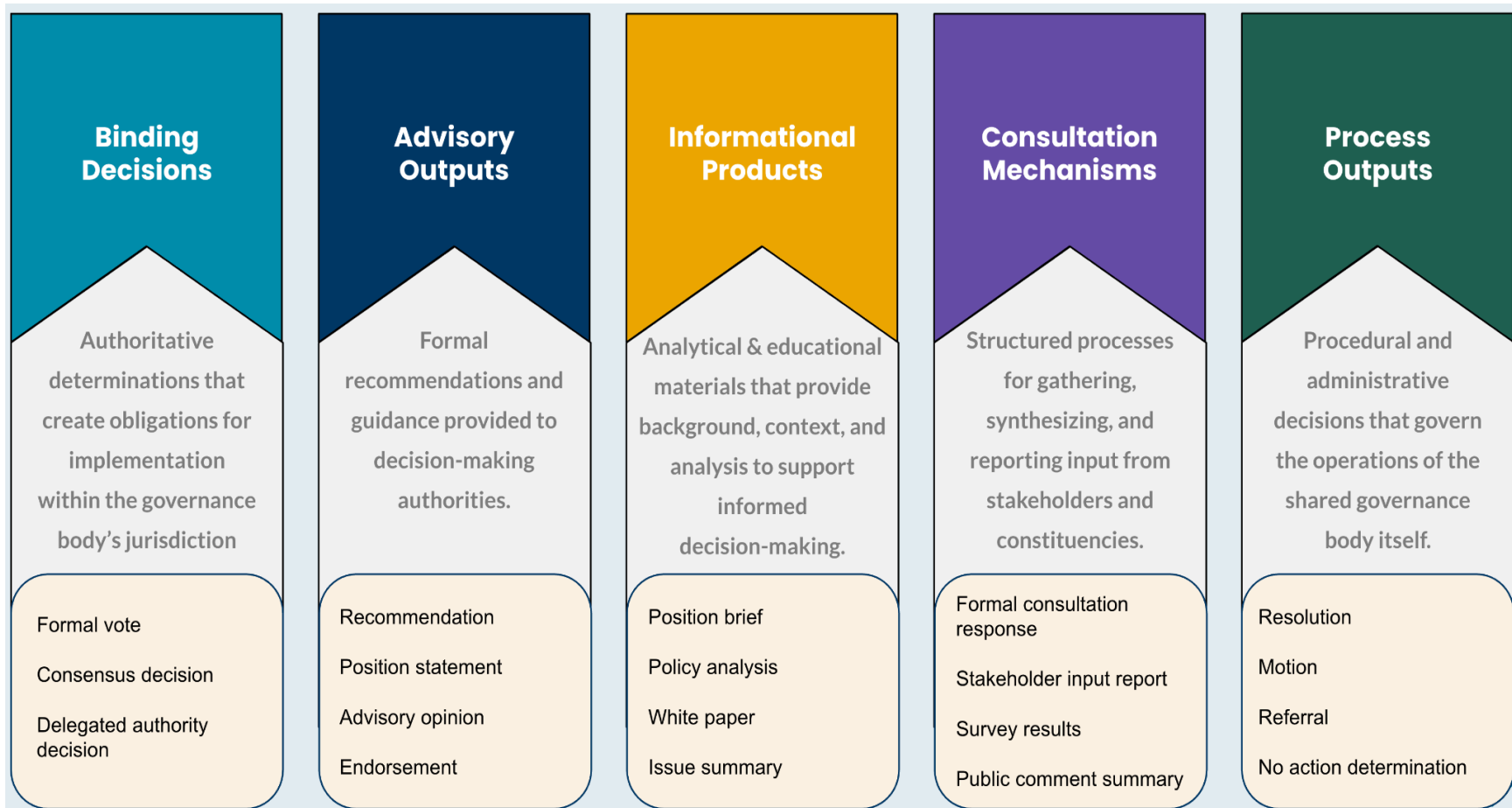
Task Force: A temporary group created to address a specific issue or opportunity and provide recommendations within a set time frame. Have more flexibility in their composition than standing committees and are typically disbanded when the work is completed.

Team: A collaborative construct that brings people together to coordinate, strategize, and execute specific work, but does not constitute a formal shared governance body with decision-making authority. Group composition can be flexible based on work needs; groups can be ongoing or project-based, depending on the work, and may report to councils, committees, or Cabinet leadership.

Decision-Making: A Causal Chain



Sample Decision-Making Vehicles for Shared Governance



Engagement History

- Shared with **PLC** on September 10, 2025.
- Shared with **EAC** on September 22, 2025.
- Shared with **IBPC** on October 7, 2025.
- Shared at the **co-chair kickoff** on October 22, 2025.
- Shared at the **AMC** on November 12, 2025.