

JAMHURI YA MUUNGANO WA TANZANIA
OFISI YA RAIS
TAWALA ZA MIKOA NA SERIKALI ZA MITAA



MKOA WA TABORA
MTIHANI WA UTAMILIFU (MOCK) MKOA, KIDATO CHA NNE

021

KISWAHILI
(Kwa Watahiniwa Walioko na Wasioko Shuleni)

Muda: Saa 3

Jumanne, Mei 9, 2023, Mchana.

MAELEKEZO

1. Karatasi hii ina sehemu A, B na C zenye jumla ya maswali 11.
2. Jibu maswali yote katika sehemu A na B na maswali mawili kutoka sehemu C. Swali la 11 ni lazima.
3. Sehemu A na B ina Alama 70 na sehemu C ina Alama 30.
4. Andika kwa kutumia kalamu yenye wino wa bluu au mweusi.
5. Vifaa vya mawasiliano na vitu vyote visivyoruhusiwa havitakiwi katika chumba cha mtihani.
6. Zingatia maelekezo ya kila sehemu ya swali.
7. Andika namba yako ya mtihani katika kila ukurasa wa kijitabu chako cha kujibia.

Fullbrightz.Com

Mtihani huu una kurasa 4 zilizochapwa

SEHEMU A: (ALAMA 16)

1. Chagua herufi ya jibu sahihi katika kipengele cha (i) hadi (x), kisha andika herufi ya jibu hilo katika kijitabu cha kujibia ulichopewa.
- (i) Neno lipi kati ya maneno haya linaweza kudokeza hisia za mtenda au mtendwa
- A. Kiunganishi B. Kivumishi C. Kihisishi ()
D. Kielezi E. Kiswahili
- (ii) Kategoria ya kisarufi inayowakilisha wakati katika kitenzi.
- A. Leksimu B. Kiambishi awali C. Shina ()
D. Mtenda/mtendwa E. Njeo
- (iii) Sarah alipozungumza kwa mara ya kwanza kwenye mkutano walimkundua kuwa ametoka mkoa wa Mara. Kitu gani kilimfanya agundulike?
- A. Kushuka na kupanda kwa sauti yake
B. Mkazo wa sauti yake
C. Uongaji wa taratibu
D. Umbo lake namba nane
E. Lafudhi yake
- (iv) Kifungu cha maneno ambacho hujibu maswali ya ziada kuhusu tendo katika sentensi huitwa?
- A. Kiingizi B. Kirai nomino C. Tungo ()
D. Kirai kielezi E. Kikundi kivumishi
- (v) Dhana mojawapo kati ya hizi huwa na dhima ya kuokoa muda
- A. Ufahamu B. Fasihi C. Lugha fasaha ()
D. Masimulizi E. Hadithi
- (vi) Ipi ni tofauti ya msingi kati ya Mashairi na Ngonjera?
- A. Mpangilio wa vina na mizani
B. Idadi ya mizani na mshororo ()
C. Majibizano baina ya watu wawili au zaidi
D. Mpangilio maalumu wa silabi na lugha ya mkato
E. Mapigo ya kimuziki na ridhimu
- (vii) Ni muundo upi wa ushairi wa fasihi unaundwa na mistari/mishororo mitano?
- A. Sabilia B. Takhmisa C. Tathmisa ()
D. Tathlita E. Tashibiha
- (viii) Neno mama lina mofimu ngapi?
- A. Nne B. Mbili C. Tatu ()
D. Moja E. Tano
- (ix) Kanuni za kipekee katika utunzi wa kazi za fasihi andishi ambazo hutofautisha utunzi mmoja wa fasihi andishi na utunzi mwingine usio wa kifasihi hujulikana kama:
- A. Mtindo B. Muundo C. Wahusika ()
D. Matumizi ya lugha E. Tungo
- (x) Mtangazaji wa televisheni huhakikisha watazamaji wanapata habari sahihi kwa wakati. Katika fasihi kazi hiyo hufanywa nani kati ya hawa wafuato?
- A. Wasikilizaji B. Hadhira C. Fanani ()
D. Wasomaji E. Wazungumzaji

Fullbrightz.Com

2. Oanisha maana ya dhana zilizopo katika orodha A na dhana husika katika orodha B kisha andika herufi ya jibu sahihi katika kijitabu chako cha kujibia.

ORODHA A	ORODHA B
(i) Kongozi	A. Huimbwa jandoni
(ii) Kimai	B. Huimbwa wakati wa kilimo
(iii) Wawe	C. Huimbwa wakati wa shughuli za baharini
(iv) Nyiso	D. Huimbwa wakati wa kuaga mwaka
(v) Mbolezi	E. Huimbwa katika michezo ya watoto
(vi) Bembea	F. Huimbwa katika msiba
	G. Huimbwa ili kubembebeza watoto
	H. Huimbwa ili kusifia Taifa

SEHEMU B: (ALAMA 54)

Jibu maswali yote katika sehemu hii

3. A. Unaelewa nini kuhusu dhana ya misimu?
 B. Onesha vyanzo viwili vya misimu
 C. Misimu huweza kuundwa kwa njia tofauti tofauti. Eleza njia zilizotumika kuunda misimu ifuatayo
 (i) Demu
 (ii) Kumzimikia
 (iii) DISCO
 (iv) Ferouz ni twiga
 (v) Mataputapu
4. Batuli alitaka kuhifadhi methali na vitendawili kwa njia ya kichwa tu kwa ajili ya kizazi kijacho. Lakina Kibuyu alimkataza asifanye hivyo badala yake atumie njia nyingine
 A. Toa hoja nne (4) kama sababu ya katazo hilo
 B. Taja njia tano (5) sahihi ambazo unahisi Kibuyu angemshawishi batuli atumie.
5. Ukiwa kama Mtendaji wa Kata ya Chemchem andaa hotuba utakayoisoma mbele ya viongozi wa chini yako kuhusu ufanikishaji wa ujenzi wa madarasa katika kata yako.
6. Eleza kinagaubaga tofauti zilizopo kati ya lugha ya mazungumzo na lugha ya maandishi kwa kuzingatia vipengele vifuatavyo;
 A. Uwasilishaji
 B. Uhifadhi
 C. Mabadiliko
7. Upatanisho wa kisarufi ni kigezo kimojawapo kati ya vigezo vya kuunda ngeli za nomino. Thibitisha dai hilo kwa kutunga sentensi ukitumia ngeli zifuatazo:-
 (i) U -I
 (ii) U -ZI
 (iii) KI - VI
 (iv) LI -YA
 (v) U - YA
 (vi) U - WA

Fullbrightz.Com

8. Soma kifungu cha habari kifuatacho kisha jibu maswali yanayofuata:

Ndugu wazazi kumbe safari yenu inahusu harusi ya Maria? Mkuu wa shule aliwauliza wazazi. "Ndiyo" wazazi walijibu kwa pamoja bila aibu. "Inategemewa kufungwa lini?" Mkuu wa shule aliendelea kuhoji. "Harusi ilitakiwa ifanyike wakati Maria atakapomaliza kidato cha nne, lakini ametufanyia uhuni na vituko visivyochezeka. Nasi sasa tunachukiwa na kudharauliwa na kila mtu hapa kijijini.

Hii imetuudhi sana. Tumetungiwa nyimbo na kufanyiwa kila shutuma. Hatuna raha, hivyo tumeona bora tuje kukuomba umfukuze shule ili kiburi kimuishe. Nasi tupo tayari bata kukulipa kiasi chochote cha fedha ukitimiza haja yetu hii. Mzee Eko alieleza.

Muda wote Mkuu mkuu wa shule alikuwa akimtazama mzee Eko kwa dhati sana kisha akauliza swali la kuchochea mazungumzo zaidi. "Maria ana kiburi kumbe?" Mama Maria hakutaka hilo limpote, hima hima akatoa maelezo yake, "Mama wee! Maria usimuone hivi. Mwanangu hataki kufuata utamaduni wetu wa kuolewa. Anataka eti achague mchumba mwenyewe. Haoni kama mahari ni kitu cha msingi. Kiburi hicho kinatokana na elimu mliyompa. Sasa anaharibika, anafanya apendavyo. "hii ni elimu gani isiyojali adabu wala utii" Mama Maria alimaliza kuongea huku jasho na machozi yakimtoka.

Baada ya kuwasikiliza, mwalimu aliona awaelimishe kwanza kabla hajawatolea kauli ya mwisho. Alikwisha tambua kwamba wazazi wa Maria walikuwa wamepitwa na wakati. Kila upya wa mawazo waliuita kiburi.

Maswali

- A. Bainisha dhima nne (04) zilizotokana na habari uliyosoma.
B. Fupisha habari hiyo kwa maneno yasiyopungua 70 na kuzidi 80.

Fullbrightz.Com

SEHEMU C: (ALAMA 30)

Jibu maswali mawili kutoka katika sehemu hii, swali la 11 ni lazima

ORODHA YA VITABU

USHAIRI

Wasakatonge	-	M.S. Khatibu (DUP)
Malenga Wapya	-	TAKILUKI (DUP)
Mashairi ya Chekacheka	-	T.A. Mvungi (EPQD LTD)

RIWAYA

Takadini	-	Ben J. Hanson (MBS)
Watoto wa Mama Ntilie	-	E. Mbogo (H.P)
Joka la Mdimu	-	A. J. Safari (H.P)

TAMTHILIYA

Orodha	-	Steve Reynolds (MA)
Ngoswe Penzi Kitovu cha Uzembe	-	E. Semzaba (ESC)
Kilio Chetu	-	Medical Aid Foundation

9. Fasihi ya Kiswahili imemuweka mwanamke katika hadhi tofauti tofauti. Thibitisha usemi huu kwa kutumia hoja tatu kwa kila riwaya.
10. Chanzo cha matatizo mengi ya jamii nyingi huletwa na kusababishwa na mwanajamii mwenyewe. Thibitisha dai hili kwa kutumia tamthilia mbili ulizozisoma. Toa hoja tatu kwa kila ~~riwaya~~ *tamthilia*.
11. Eleza kwa mifano madhubuti sababu tano (05) za uamuzi wa kuendelea kutumia Kiswahili katika mawasiliano mara tu baada ya uhuru.

**THE UNITED REPUBLIC OF TANZANIA
PRESIDENT'S OFFICE
REGIONAL ADMINISTRATION AND LOCAL GOVERNMENT**



**FORM FOUR REGIONAL MOCK EXAMINATION
TABORA REGION**

031/2A

**PHYSICS – 2A
ACTUAL PRACTICAL, 2A
(For Both School and Private Candidates)**

Time: 2:30 Hour

Wednesday, May 17, 2023, a.m.

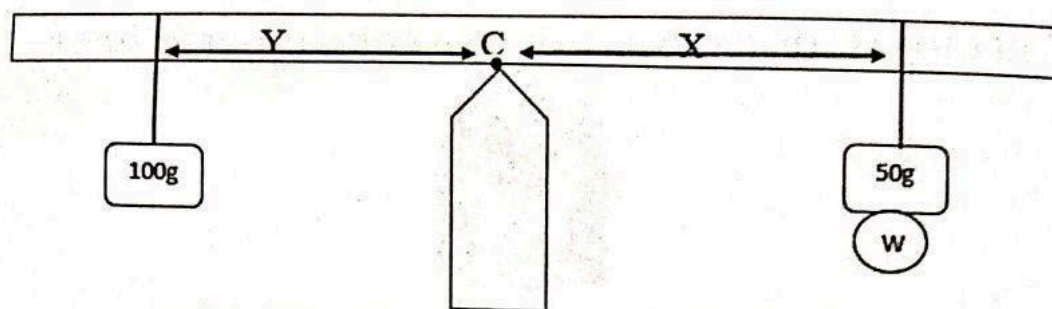
INSTRUCTIONS

1. This paper consist of **two (2)** questions, answer ALL questions
2. Each questions carries 25 marks
3. Write your Examination Number on every page of your answer sheet
4. Non-programmable calculator and mathematical table may be used
5. Cellular phone and any unauthorized materials are not allowed in the examination room.

Fullbrightz.Com

This paper consists of 4 printed pages

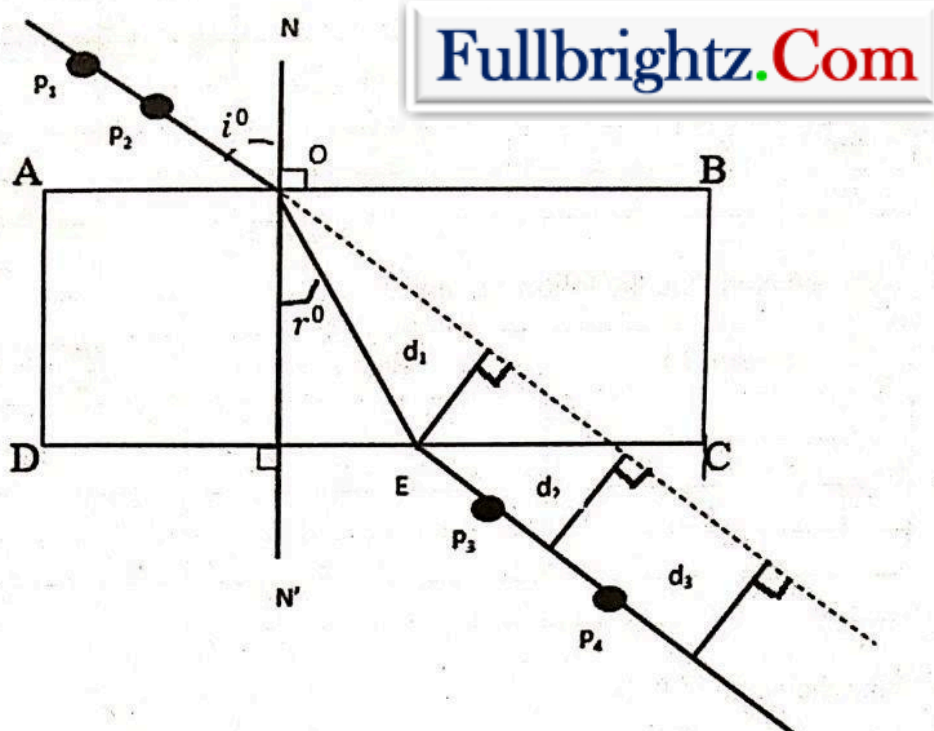
1. You are provided with a knife edge, a metre rule, a 100g mass, a 50g mass and unknown mass, W . proceed as follows to find the mass of W ;



- Balance a meter rule on a knife edge freely and mark the center of gravity C of the ruler.
- Without changing the position of the knife edge put a mass of 100g at a distance $Y=8\text{cm}$ from the center of gravity C of the ruler. Then put the mass of 50g together with W at distance X from the center of gravity to make the ruler balanced horizontally. Record the distance X .
- Repeat the experiment for $Y=12\text{cm}$, 16cm , 20cm and 24cm .
- Prepare a table of results for Y (m) and X (m).
 - Plot a graph of Y against X
 - Determine the slope, S of the graph.
 - What is the nature of the graph? Illustrate mathematically.
- If the equation governing this experiment is $\frac{100}{X} = \frac{50+W}{Y}$, Use the graph slope to find the value of W
- This experiment illustrates the function of a certain device in daily life. Name the device.
- State any two sources of errors and the precautions to be taken.

Fullbrightz.Com

2. You are provided with an apparatus, L a soft drawing board, optical pins, drawing pins and plane paper. Proceed as follows:



Place a plane paper on a drawing board and fix using drawing pins. Place L placed in such a way that it's one of the largest surface is upper most. Trace the outline of L using a sharp pencil. Mark this outline ABCD. Remove the L and draw the line NON' near AD. Draw a line making an angle of incidence, $i=30^0$. Stick two optical pins P₁ and P₂ at a proper distance on the line. Look at two optical pins P₁ and P₂ through DC of L. adjust position of your observation eye by moving the head until the images of two Pins P₁ and P₂ are in straight line when viewed through L at the side DC. Stick two more optical pins P₃ and P₄ to be in line with the image of P₁ and P₂ when viewed through DC of L.

Remove the L and all the four optical pins (P₁, P₂, P₃, and P₄). Join the marks due to P₃ and P₄ by a straight line to the edge of L at E. also join points O and E by a straight line. Measure the angle of refraction (r^0).

Protrude the line P₁, P₂ and O beyond CD by dotted line as shown in the figure.

Measure the perpendicular distances d_1 , d_2 and d_3 . Then find the average of the perpendicular distances, d

Repeat the experiment for $i=40^0$, 50^0 , 60^0 and 70^0 .

(a) Represent your result as in a table below:

i^0	r^0	$\cos r$	$d_1(\text{cm})$	$d_2(\text{cm})$	$d_3(\text{cm})$	$d(\text{cm})$	$(i-r)$
30							
40							
50							
60							
70							

(b) Copy and complete the following table:

$d\cos r(\text{cm})$	$\sin(i-r)$	$\frac{\sin(i-r)}{d\cos r}$ per cm

(c) Find the value of P if

$$P = \text{average of } \frac{\sin(i-r)}{d\cos r}$$

(d) Measure all three dimensions of the apparatus L

(e) Find M if $m = \frac{1}{p}$

Fullbrightz.Com

(f) Suggest the physical measuring of M

Attach to your script of answers, all the drawings worked in plane papers for this question.

THE UNITED REPUBLIC OF TANZANIA
PRESIDENT'S OFFICE
REGIONAL ADMINISTRATION AND LOCAL GOVERNMENT



Fullbrightz.Com

FORM FOUR REGIONAL MOCK EXAMINATION
TABORA REGION

031/1 **PHYSICS – 1**
(For Both School and Private Candidates)

Time: 3 Hours

Friday, May 12, 2023, a.m.

INSTRUCTIONS

1. This paper consists of **three** sections A, B and C with a total number of eleven (11) questions.
2. Answer **all** questions in sections A and B and **two** questions in section C.
3. Section A carries sixteen (16) marks, section B carries fifty-four (54) marks and section C carries thirty (30) marks.
4. Mathematical table and non-programmable calculators are allowed.
5. Cellular phone and any unauthorized materials are **not allowed** in the examination room.
6. Write your examination number on every page of the answer sheet provided.
7. You may use the following constants:

$$g = 10\text{N/kg}$$

$$\text{Density of water} = 1\text{g/cm}^3 \text{ or } 1000\text{kg/m}^3$$

$$\text{Pie}=3.14$$

This paper consists of 6 printed pages

SECTION A: (16 MARKS)

Answer all questions in this section

1. For each of the following items (i) to (x), choose a correct answer from the given alternatives and write its letter beside the items number in the answer booklet provided.

(i) A form four student was given sets of energy so as to choose which among these energy cannot be re-used

- A. Fossils, sun, oil and nuclear
- B. Water, wind, wood and natural gas
- C. Oil, natural gas, and wood
- D. Natural gas, water, nuclear and wood
- E. Geothermal energy

()

(ii) Form four students were discussing on the properties of matter, where one of them said that solid has definite shape and all members of the group agreed. Which one could be the reason behind for solid to have definite shape?

- A. It has high adhesive force
- B. It has high surface tension
- C. It has low viscosity
- D. It has high cohesive force
- E. It has low adhesive force


()


(iii) ANGINJA was in the car, she tried to look at her friends who were outside of the car through a glass window, but she did not see them well. You as a form four student, what conclusion could you make on that glass window?

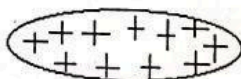
- A. It is transparent material
- B. It is translucent
- C. It is opaque
- D. It is not cleaned
- E. It is black

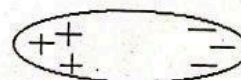
()

(iv) Suppose you are given a positively charged rod, and you have placed that rod nearby side P of a neutral body PS. How will charges be distributed in the neutral body PS?

A. P  S.

B. P  S.

C. P  S.

D. P  P.

E. P  S.

Fullbrightz.Com

()

(v) Suppose a singer is singing and the audience are enjoying the moment when a singer raises the voice and when the sound wave is lowered. Basing on the features of the sound, what is the feature of the sound that describes the sound given?

- A. Intensity
- B. Beat
- C. Timber
- D. Pitch
- E. Reverberation

(vi) A red tie was viewed by using light from a torch which was blue. The colour that was seen was black. What happened to the blue colour from a torch when it met with red tie?

- A. Reflection
- B. Absorption
- C. Transmission
- D. Refraction
- E. Diffraction

Fullbrightz.Com

(vii) Ntanguye was cooking ugali in a good conducting container, but she seems to use iron handle which is covered by plastic at its holding handle to hold a cooking container. Why did she use plastic handle and not iron?

- A. It is good conductor of heat
- B. Its particles are closely to each other
- C. It reflects heat
- D. It is a poor conductor of heat
- E. It is a good heat emitter

(viii) One of the bulbs connected in the house seems to give out a bright light than other bulbs. Which device could be used to know the amount of potential drop used by a bulb

- A. Rheostat
- B. Ammeter
- C. Galvanometer
- D. Multimeter
- E. Voltmeter

(ix) An atom was unstable, so it underwent disintegration, as a result different rays were released but one among those rays had negative charge. Which rays do you think might be the one?

- A. Gamma rays
- B. X-rays
- C. Cathode rays
- D. Beta particles
- E. Alpha particles

(x) An astronomer observed group of stars that formed definite shape or pattern when viewed from the Earth, what name is given to those stars?

- A. Constellations
- B. Comets
- C. Asteroids
- D. Meteoroids
- E. Satellite

2. Match the following concepts in List A with the relevant description in List B by writing its letter beside the item number in sheet provided.

LIST A	LIST B
(i) Self-induction	A. Determines direction of the magnetic field produced by current carrying conductor
(ii) Lenz's law	B. Relates the magnitude of induced e.m.f. and rate of change of magnetic flux linking a conductor
(iii) Mutual induction	C. Describes the direction of the induced e.m.f. around the closed loop
(iv) Step down transformer	D. Variation of the magnitude of current flowing in a conductor itself
(v) Faraday's law of electromagnetic induction	E. Variation of the magnitude of current in one coil induce current in the other
(vi) Maxwell's cork screw rule	F. Secondary voltage is smaller than primary voltage
	G. Primary voltage is higher than secondary voltage
	H. Interaction between electric and magnetic field

Fullbrightz.Com

SECTION B: (54 MARKS)

Answer all questions in this section

3. (a) Plane mirror forms an image of different features. By using a diagram show how a plane mirror forms an image of its features. **(04 marks)**
 (b) Dentists prefer to use a concave mirror, in their work. With a help of a diagram explain why. **(05 marks)**
4. (a) NYAMWERU was at home cultivating. He had two hoes, sharp and blunt hoe. Blunt hoe was not cutting well as how sharp hoe did. Explain to him why sharp hoe cuts well than blunt hoe. **(03 marks)**
 (b) A cube of sides 2cm is completely submerged in water so that the bottom of the cube is at a depth of 10cm. find:
 (i) Difference in pressure between bottom and top of the cube. **(3.5 marks)**
 (ii) Different of force between bottom and top of the cube. **(2.5 marks)**
5. (a) AFYUSISE lived in a street where there are no cars. . When he visited his brother who lives in Town he saw cars moving around and he started to ask himself some questions:

- (i) Why the car has circular wheel?
- (ii) Why the car tires are grooved? and
- (iii) Why the car engine is direct over the driving wheel?

Now you as a form four student help him to understand the reasons behind each question he asked himself. **(06 marks)**

- (b) An athlete exerts a force of 100N while running 100m race, if she uses 50,000J of food energy. Calculate her efficiency. **(03 marks)**
6. (a) Matter expands when heated and contracts when cooled, by using a diagram of a ball and ring apparatus, explain how solid expand when heated. **(05 marks)**
- (b) When hot water was poured to put off the fire, some hot water dropped to the people and caused less burning compared to the burning that was caused by vapour. Explain why vapour caused severe burning. **(05 marks)**
7. (a) Russia-Ukraine war is in tension of using weapons of mass destruction. Explain three health effects that are likely to occur if weapons of mass destruction will be used. **(03 marks)**
- (b) Among the properties of cathode rays is that "when stopped suddenly they form an X-rays". With the help of well labeled diagram explain how cathode rays produce X-rays. **(06 marks)**
8. (a) An increase in temperature to the environment has become a global problem. Analyze five solution to this problem **(05 marks)**
- (b) A physics teacher guided the students to draw an electrical circuit which has a total resistance of 3Ω . Unfortunately in the school laboratory there were three (3) resistance of 2Ω each. Explain how will a student form the desired resistance and draw its circuit. **(04 marks)**

SECTION C: (30 MARKS)

Answer only two questions from this section

9. (a) Explain why does a solid weigh more in air than when immersed in a liquid? **(04 marks)**
- (b) By using a help of diagram explain what happen to the two parallel straight conductors when current is moving in the same direction and in opposite direction. **(04 marks)**
- (c) A block of wood of mass 5kg is placed on a rough inclined plane, at 60° to the horizontal. If the coefficient of kinetic friction between the wood and the plane is 0.3, determine the acceleration of the wood down the plane. **(05 marks)**

10. (a) (i) When in forward bias a PN junction conducts electric current but when in reverse bias does not conduct electric current. Describe this statement. **(08 marks)**
- (ii) A teacher asked learners to mention example of insulator, learners mentioned wood. Give two reasons why wood is an insulator. **(03 marks)**
- (b) (i) A thorium nucleus has a symbol of ${}_{90}^{234}\text{Th}$, it emitted two beta particles in succession, to form Radium (Ra). Write down the decay equation. **(02 marks)**
- (ii) Gamma rays and X-rays have the same common properties. What are two reasons that make them not the same rays? **(02 marks)**
11. (a) (i) Two tuning forks of the same frequency are available in the laboratory. One of the forks is loaded with some plasticine to alter its frequency slightly. What would you expect to observe if the two forks are sounded together? **(04 marks)**
- (ii) Musicians place their fingers at different lengths of a stringed instrument when using it. Explain why? **(03 marks)**
- (b) (i) A string of length 40cm is made to vibrate at its fundamental frequency and then at second overtone. Calculate the wavelength in each case. **(04 marks)**
- (ii) Explain why a singer who is singing in a hall of many people is heard more clearly than when sings in a hall without any person. **(04 marks)**

Fullbrightz.Com

THE UNITED REPUBLIC OF TANZANIA
PRESIDENT'S OFFICE
REGIONAL ADMINISTRATION AND LOCAL GOVERNMENT



FORM FOUR MOCK EXAMINATION
TABORA REGION

011

CIVICS
(For both School and Private candidates)

Time: 3 Hours

Monday, May 8, 2023, a.m.

INSTRUCTIONS

1. This paper consists of three sections A, B and C with a total of eleven (11) questions.
2. Answer all questions in sections A and B and TWO (2) questions only in section C.
3. All writing should be written in blue or black ink,
4. Calculator, cellular phones and unauthorized materials are not allowed in the examination room.
5. Write your examination number on every page of your answer booklet.
6. Be Neat and Clear.

Fullbrightz.Com

This paper consists of 4 printed pages

SECTION A: (16 MARKS)

Answer all questions in this section

1. For each of the following items (i) – (x), choose the most correct answer from among the given alternative and write its letter beside the item number in the answer booklet provided.

(i) Lisa's husband died and her in-laws forced Lisa to marry Bahati her late husband's young brother. Such a family decision demonstrates_____.

- A. Gender blindness
B. Gender equality ()
C. Gender stereotyping
D. Gender mainstreaming
E. Gender discrimination

(ii) Dual citizenship is not recognized in Tanzania but children born in Tanzania to people who are not Tanzanian citizens acquire citizenship by birth. The citizenship ends when_____:

- A. They travel outside Tanzania
B. they get married
C. their parents leave Tanzania
D. the children attain the age of 18 years
E. they complete their studies in Tanzania

Fullbrightz.Com

(iii) Which among the following can make communication channel effective?

1. Telephones 2. Sender 3. Feedback 4. Receiver 5. Channel
A. 1, 2, 4, 5, 3
B. 3, 2, 1, 5, 4 ()
C. 2, 3, 4, 5
D. 4, 1, 2, 3, 5
E. 1, 2, 3, 4, 5

(iv) Baltazary cannot access credit facilities offered by Commercial banks in Tanzania because of the following.

- A. He lacks the culture of saving it
B. He lacks the education ()
C. He lacks insurance cover
D. He is discouraged by high interest
E. He lacks information on credit facilities

(v) What message does Zebra crossing communicate to vehicle drivers?

- A. There may be another vehicle crossing or waiting to cross the road
B. There may be pedestrian crossing or waiting to cross the road ()
C. To reduce speed because there is a railway crossing the road
D. There may be traffic police monitoring speed limits
E. To reduce speed because there is a nearby game reserve

(vi) A culture of preventive care and maintenance of public properties should be encouraged in Tanzania because_____:

- A. It protects environment cleanliness and conservation
B. It is a condition attached to donors' assignment ()

- C. It is international standard of public property maintenance
 D. Public properties are important cultural heritage
 E. It can reduce costs of repair and prolong the life span.
- (vii) Identify organizations which can help women to address socio-cultural practices that prevent women from participating actively in production activities in society.
- A. FGM and TGNP
 B. TAMWA and WAMA ()
 C. NGOs and TAWLA
 D. WAMA and FGM
 E. TAWLA and TGNP.
- (viii) Peter and Zita live together in Ushokola village and they have sexual relationship although they are not legally married. This situation is known as _____.
- A. Couple family
 B. Levirate
 C. Cohabitation
 D. Bigamy
 E. Sororates.
- (ix) "Each nation normally is introduced by its components" Which among the following verify the reliability of the statement with respect to Tanzania?
- A. Government, territory, flag and constitution
 B. Territory, sovereignty, Government and culture
 C. Constitution, territory, national anthem and culture ()
 D. Government, parliament, sovereignty, and freedom
 E. Language, sovereignty, territory and culture.
- (x) Which of the following stages involves a session in which candidates present their manifesto and voters ask question?
- A. During election
 B. Voting process ()
 C. Political campaign
 D. Election result
 E. Polling day

Fullbrightz.Com

2. Match each item in Column A against its corresponding item from Column B.

Column A	Column B
(i) Corruption and economics crimes division of the high court	A. Urban and district authorities
(ii) The chief executive in the office of the National Assembly	B. VAT, grants, licenses
(iii) Local government	C. Deal with embezzlement of public fund
(iv) Rent and subsidies	D. Speaker of the National Assembly
(v) Union matters	E. Central government source of revenues
(vi) Lowest local Government unit in	F. Meteorology, Research, statistics, the court of Appeal of united republic, civil aviation

the urban authorities in Tanzania

Fullbrightz.Com

- G. Clerk of the National Assembly
- H. Theocracy
- I. Ward Council
- J. Village
- K. Anarchy
- L. Democratic form of government

SECTION B: (54MARKS)

Answer all questions from this section

3. It seems to be known and proved that, most Tanzanian youths fail to develop their economic positions because of lack of creativity and laziness. Briefly advice them on how work can change and improve their economic and social development. Give six points.
4. In which ways the central government can collect revenue? Give six points
5. Many youths today are engaged in smoking as their recreation. Outline six root causes of phenomenon.
6. Assume you are the health program coordinator in 6 Regions of Tanzania explain how community would be affected if reproductive health education would be neglected. Six points
7. A leader is mostly decorated with his or her characteristics and criteria. Suppose you are a consultant on leadership matters. Explain this statement by using six points.
8. Briefly explain by giving six points why do you think the government of Tanzania is conducting campaign against (FGM) female Genital mutilation?

SECTION C: (30 MARKS)

Answer ONLY TWO questions from this section

9. Despite the fact that Tanzania is endowed with many resources, it is economically underdeveloped. Discuss six factors needed for economic development in Tanzania to take off.
10. Lesson on culture is essential, most potential to the young generation and it can solve day to day life problems. Justify this statement by giving six points.
11. Impact of globalization in Tanzania can be categorized into: social, economic, political and cultural impacts. As a citizen of Tanzania, justify this statement by using six points of views.

THE UNITED REPUBLIC OF TANZANIA
PRESIDENT'S OFFICE
REGIONAL ADMINISTRATION AND LOCAL GOVERNMENT



REGIONAL FORM FOUR MOCK EXAMINATION
TABORA REGION

024

LITERATURE IN ENGLISH
(For Both School and Private Candidates)

Time: 3 Hours

Wednesday, May 17, 2023, p.m.

INSTRUCTIONS

1. This paper consists of three sections A, B and C with a total number of eleven (11) questions.
2. Section A carries **sixteen (16)** marks, section B carries **fifty four (54)** marks and section C **thirty (30)** marks
3. Answer **all** questions in sections A and B and any two (2) questions from section C.
4. All writing must be in blue or black ink
5. Cellular phones and any unauthorized materials **are not allowed** in the examination room.
6. Write Examination Number at the top right corner of every page of your answer sheet.

Fullbrightz.Com

This paper consists of 6 printed pages

SECTION A: (16 MARKS)

Answer all questions in this section

1. For each of the following item (i-x) choose the correct answer from the given alternatives and write its letter beside the item number in the answer booklet provided.

(i) What is literary genre in which ideas and feelings are expressed in imaginative and musical language?

- | | | |
|-----------|----------------|-----|
| A. Poetry | B. Plays/Drama | () |
| C. Prose | D. Novel | |
| E. Lyrics | | |

(ii) It is a verse that does not conform to conventional form of structure and organization such as metrical feet, rhyme and stress patterns.

- | | | |
|---------------|----------------|-----|
| A. Free verse | B. Black verse | () |
| C. Legends | D. Ballads | |
| E. Parables | | |

(iii) Our grandmother likes to tell us ancient stories with animal characters, and at the end of each story she asks us what we have learnt from the story. Such stories are called _____.

- | | |
|-------------------|------------|
| A. Anecdotes | B. Fables |
| C. Couplet | D. Triplet |
| E. Poetic license | |

Fullbrightz.Com

(iv) Baraka asked his friend to arrange the events when composing a story. Unfortunately the friend was unaware about it. He decided to seek assistance from anyone. If you were asked by Barakato help him , how would you arrange the events?

- | | |
|--|-----|
| A. Style, characters, chapter, scene and act | |
| B. Rising action, plot, characters and scene | () |
| C. Exposition, Rising action, climax, falling action, Denouement | |
| D. Exposition, rising action, climax, Denouement, falling action | |
| E. Rising action, exposition, climax, falling action, Resolution | |

(v) Which figure of speech is useful when you want to reduce the impact of blunt words in writing a work of art?

- | | | |
|--------------|--------------|-----|
| A. Suspense | B. Diction | () |
| C. Anecdote | D. Hyperbole | |
| E. Euphemism | | |

- A. Vulgarism B. Euphemism ()
C. Hyperbole D. Barbarism
E. Exaggeration

- A. Developing language B. Warning ()
C. Entertaining D. Recreating
E. Educating

- A. Mime
B. Pantomime
C. Onomatopoeia
D. Apostrophe
E. Catastrophe

A. Playwright B. Critic ()
C. Comedian D. Director
E. Author

- A. Satire B. Sarcasm
C. Irony D. Paradox
E. Oxymoron

- | LIST A | LIST B |
|---|------------------------------|
| (i) It is a direct address to the dead or an inanimate object creating an emotional surge | A. Hyperbole
B. Symbolism |
| (ii) Is a figure of speech in which a person or thing is | C. Irony |

defected as being better or worse or large or smaller, than is actually the case.	D. Imagery
(iii) It is a figure of speech which includes a statement that appears contradictory to common sense yet is true in fact	E. Paradox
(iv) Is a repetition of the same pattern of words or phrases with in a sentence or passage to show that two or more ideas have the same level of importance	F. Personification
(v) This is a figure of speech which creates a mental picture that appeals five senses to its readers.	G. Parallelism
(vi) A figure of speech in which non-human objects or creatures are given human qualities or features	H. Apostrophe

Fullbrightz.Com

SECTION B: (54 MARKS)

Answer all questions in this section.

3. The following statements hold functions of literature in the society. Mention which function is portrayed in each of the statement.

- If you marry him, sure I tell you, you will regret
- How come a civil servant is drinking alcohol during working hours!?
- If you want to harvest plenty of maize, you have to apply fertilizer at least thrice, clean the farm and sleeping while watching it
- This type of food, and the way we greet each other, were practiced by our ancestors. We won't stop until the coming generation does the same.
- I like the way that artist dresses, speaks, sings, dances and walks, it is really interesting
- Amina likes to visit Diamond hall every weekend to watch comedy show organized by famous comedians like MC Eliud and Joti, at the end of the show she return home joyful, haply with a lot of laughter

4. Read the following poem and then answer the questions that follow.

I LOVE YOU MY GENTLE ONE

(By Ralph Bitamazire)

I love you my gentle one,
My love is the fresh milk in the Rubindi,
Which you drunk on the wedding day

My love is butter we were smeared with,
To seal fidelity into our hearts

You are the cattle bird's eggs
For those who saw you are wealthy
You are the papyrus reed on the lake
Which they pull out with both hands
And I sing for you with tears
Because you passes my heart
I love you my gentle one.

- (a) Who is a persona in the poem and a persona is speaking to whom?
 - (b) What are the central purposes of the poem?
 - (c) What are the literary devices found on this poem? (mention three devices)
 - (d) Mention three ideas found from the poem
 - (e) Is the poem relevant to our society? Explain how.
 - (f) How many verses and stanzas are in the poem?
5. With examples write short notes on the following literary terms
- (a) Juxtaposition
 - (b) Epilogue
 - (c) Dysphemism
 - (d) Cast character
 - (e) Analogy
 - (f) Metonymy
6. Write the correct answer for each of the following
- (a) Why setting is important in literary work?
 - (b) Addressing to the authorities needs much attention. Why do you think so?
 - (c) What is the function of language in Literature?
 - (d) Why is poetic license applied in a poem?
 - (e) Why most of poem composers prefer to use repetition in their pieces of works?
 - (f) Why is resolution important in the development of the plot in any literary work?
7. Your friend desires to know the role of literary devices. As a professional literature help him/her by mentioning six (6) roles.
8. List six major differences between a play and other genre of literature.

Fullbrightz.Com

SECTION C: (30 MARKS)

Answer any two (2) questions from this section.

LIST OF READINGS

PLAYS

The Lion and the Jewel	–	Soyinka, W
The Trials of Brother Jero	–	Soyinka, W
The Dilemma of a Ghost	–	Aidoo, A. A.
The Government Inspector	–	Gogol, N

NOVELS

A Walk in the Night and Other Stories	–	Guma, A
Houseboy	–	Oyono, F
The Old Man and the Medal	–	Oyono, F
The Concubine	–	Amadi, E

Fullbrightz.Com

POETRY

Selected Poems	–	Tanzania Institute of Education
Growing Up With Poetry	–	David Rubadiri

9. “Toundi’s story is a personal testament (testimony) about colonial evils to many Africans” is this statement true? Support your arguments by giving six points from the novel titled the HOUSEBOY by Ferdinand Oyono.
10. When you are explaining the meaning of the term Literature you always end up with saying “to reflect the social realities” support that statement using two plays by giving three points from each play.
11. Poets like other literary artists have a message they want to convey to their readers through poems. By using two poems you have read, discuss the above statement by giving five points.

THE UNITED REPUBLIC OF TANZANIA
PRESIDENT'S OFFICE
REGIONAL ADMINISTRATION AND LOCAL GOVERNMENT



FORM FOUR MOCK EXAMINATION
TABORA REGION

041

BASIC MATHEMATICS
(For Both School and Private Candidate)

Time: 3 Hours

Tuesday, May 09, 2023, p.m.

INSTRUCTIONS

1. This paper consists of sections A and B with total number of 14 questions.
2. Answer **all** questions in section A and B
3. Each question in section A carries six (06) marks while each question in section B carries ten (10) marks.
4. All necessary working and answers for each question must be shown clearly.
5. NECTA mathematical tables and non-programmable calculators may be used.
6. All communication devices and any unauthorized materials are not allowed in the examination room.
7. Write your examination number in every page of your answer sheet (s).
8. All writing must be in blue or black ink.
9. Constants to be used.
 - Radius of the earth, $R = 6370 \text{ km}$
 - Pie, $\pi = \frac{22}{7}$

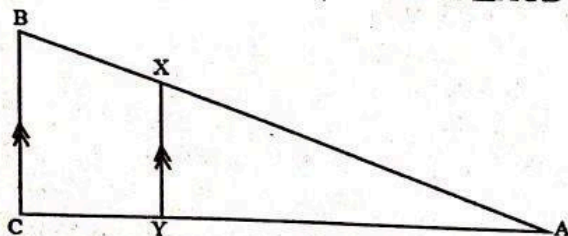
Fullbrightz.Com

This paper consists of 4 printed pages

SECTION A: (60 MARKS)

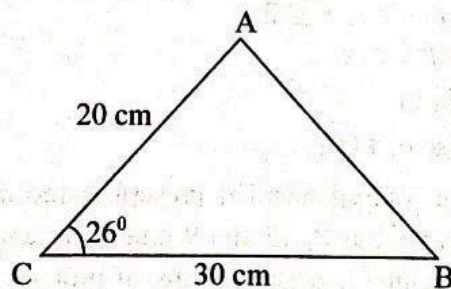
Answer all questions

1. (a) Traffic light at Malolo junction in Tabora municipality allows pedestrians after every 30 minutes. Another traffic light at Mwenge Junction in Dar es Salaam city allows pedestrians after every 45 minutes. If they start together to allow pedestrians at 6:00 a.m., at what time will they allow pedestrians together again?
(b) (i) If $x = 0.3\bar{5}$ write x a rational number.
(ii) Write 679.3494 correct to tenth.
2. (a) Solve for x in $\left(\frac{1}{3}\right)^{x+1} = 81^{-x}$
(b) Rationalize denominator in $\frac{3+3\sqrt{2}}{5-3\sqrt{2}}$
(c) If $\frac{\log x}{\log 3} = \frac{\log 4}{\log 16}$, Find value of x .
3. (a) In a school of 50 teachers, some drink Fanta and some drink coca- cola. If 40 teachers drink Fanta, 18 drink Coca-Cola and 14 drink both. How many teachers drink neither Fanta nor Coca-Cola?
(b) A form one student is writing numbers by selecting ones from digits 3, 4 and 7 and tens from digits 1 and 2. Determine the probability that a number written is less than 24.
4. (a) The position vector of points A, B and C are $-5i + 3j$, $3i - 4j$ and $6j$ respectively. Find the vectors \overrightarrow{AB} , \overrightarrow{BC} and \overrightarrow{AC} .
(b) Find the equation of a perpendicular bisector of a line segment with ends at x -intercept 4 and y -intercept 6. Write the equation in form of $ax + by + c = 0$.
5. (a) A regular polygon has an exterior angle of 40° . Find:-
(i) The number of side of regular polygon
(ii) Sum of interior angles of a regular polygon
(b) Given that $\overline{XY} = 2\text{cm}$, $\overline{BC} = 3\text{cm}$ and the area of a quadrilateral XYCB is 10cm^2 . Calculate the area of triangle AXY. (Given that $\triangle ACB \sim \triangle AXY$)



Fullbrightz.Com

6. (a) A motor cycle can travel from Tabora to Manyoni 240 Kilometres using 4 litres of Petrol. Determine cost of Petrol required traveling from Tabora to Urambo 90 Kilometres. If one litre of petrol costs Tshs. 2925/=
- (b) Energy stored in elastic band varies as the square of extension x when elastic band is extended 4 cm the energy stored is 2400 Joules. What is the energy stored when the extension is 6cm?
7. (a) A carpet that cost 20,000 shillings was sold at a loss of 15%. Find
- (i) The loss made (ii) Selling price
- (b) Two water tanks at Tura secondary school can store water in the ratio of 2:5. If the smaller tank can store water of volume 2600 litres, what is the capacity of the larger tank?
- (c) Determine the gross profit and net profit from the following information:
- Sales 38,000/=
- Opening stock 8,000/=
- Purchases 25,000/=
- Electricity 4,000/=
- Discount allowed 2,000/=
- Closing stock 5,000/=
8. (a) The second and the fifth terms of a geometric progression are nine and two hundred forty three respectively. Find the sum of the first four terms.
- (b) The company invested 10,000,000 shillings in NMB bank which gives back an interest of two percent per annum. Find the total amount that will be collected after two years.
9. (a) Mason uses a ladder in building at the top of the house. This ladder reaches at the top of the wall 18m high, when the other end touches the ground 8m from the base of the wall. Find the length of the ladder. Leave your answer in surd form.
- (b) Find the length \overline{AB} in two significant figures.



10. (a) Janeth is three years older than her brother Steven. Three years to come the product of their ages will be 180 years. Find Janeth's present age.
- (b) If $m = x^2$, find the value of x from the equation $x^4 - 13x^2 + 36 = 0$

SECTION B: (40 MARKS)

Answer all questions

11. (a) A roundabout at Ulyankulu - Urambo junction has a diameter of sixty metres. A car drives around it through an angle of 126° . What distance the car moves around?
- (b) In a Basic mathematics test, the following marks were awarded.
- 48 47 67 73 50 76 47 44 44 42 58 56 66 67 45 43 71 48 64 52
49 34 35 46 89 37 47 54 45 60 57 58 54 45 42 54 62 32 64 44
- Prepare a frequency distribution table starting with 32 having class size of 10, and then find:
- (i) Mean by using assumed mean of 56.5 (ii) Mode of the distribution.
12. (a) A ship sails north ward to Tanga (5°S , 39°E) at an average speed of 12 knots. If the ship departs Dar es Salaam (7°S , 39°E) at 12:00 midnight, when will the ship reach Tanga?
- (b) Calculate the volume of a cone having base radius 14cm and altitude 12cm.
- (c) Draw a net of Square based pyramid.
13. (a) For what value of x will make $\begin{pmatrix} 3 & x+1 \\ x-1 & 1 \end{pmatrix}$ to be singular?
- (b) John and Joseph went to the same fruits market with Tsh. 800/= and Tsh. 2000/= respectively. John bought two oranges and three mangoes while Joseph bought six oranges and seven mangoes. By using matrix method determine the price of an orange and a mango.
- (c) By using matrix method find the image of the point $(-3, 4)$ after reflection in the line $y = 0$ followed by a rotation through 90° about origin.
14. (a) Said and Sauda were asked to draw the graphs of a function. Said drew a vertical line in xy plane while Sauda drew a horizontal line in xy plane. Which graph between vertical and horizontal represents a function?
- (b) Given $f(x) = \begin{cases} x+2 & \text{if } -2 > x \\ x^2+1 & \text{if } -2 \leq x \leq 2 \\ 1 & \text{if } 2 < x \end{cases}$
- (i) Sketch the graph of $f(x)$
- (ii) Find domain and range of $f(x)$
- (c) The nutritionist at Kitete referral hospital prescribes the minimum requirement of food A and B for each patient as 8, 12 and 9 unit of protein, carbohydrates and fats respectively. Food A contains 2, 6 and 1 units of proteins. Carbohydrates and fats respectively per Kilogram and food B contain 1, 1 and 3 unit of proteins, carbohydrates and fats respectively per Kilogram. Each Kilogram of food A costs 500/= and each kilogram of food B costs 450/=. How many kilograms of each food should the hospital management buy per week for each patient in order to minimize the cost and still meet the requirement?

Fullbrightz.Com

THE UNITED REPUBLIC OF TANZANIA
PRESIDENT'S OFFICE
REGIONAL ADMINISTRATION AND LOCAL GOVERNMENT



FORM FOUR REGIONAL MOCK EXAMINATION
TABORA REGION

032/1

CHEMISTRY-I
(For both School and Private Candidates)

Time: 3:00 Hours

Thursday, May 11, 2023, p.m.

INSTRUCTIONS

1. This paper consists of three sections A,B and C with a total of eleven (11) questions
2. Answer all questions in sections A and B and **any two** questions from section C.
3. Section A carries sixteen (16) marks; section B carries fifty four (54) marks and sections C carries thirty (30) marks.
4. Cellular phone and unauthorized materials **are not allowed** in the examination room.
5. Write your **Examination Number** on every page of your booklet(s)
6. The following constants may be used.

Atomic masses

H = 1, C = 12, O = 16, Na = 23, K = 39 Cl = 35.5, Cu = 63.5, Ag = 108.

Avogadro's constant = 6.02×10^{23}

GMV at S.T.P = 22.4 dm^3

1 Faraday = 96500 coulombs

Standard Temperature = 273K

1 Litre = $1 \text{ dm}^3 = 1000 \text{ cm}^3$

Fullbrightz.Com

This paper consists of 4 printed pages

SECTION A: (16 MARKS)

Answer ALL questions from this section

1. Choose the most correct answer and write its letter in the answer booklet provided.

(i) Which term describes a rapid chemical reaction that releases energy in the form of light and heat?

- A. Ignition B. Reactivity C. Combustion ()
D. Heating E. Rusting

(ii) A form three student was asked to find the oxidation state of copper from CuSO_4 . What could it be?

- A. -10 B. $+10$ C. $+2$ ()
D. -2 E. $+5$

(iii) The existence of an element in two or more different forms but the same physical state is called _____.

- A. Polymorphism B. Isotopy C. Molecule ()
D. Radical E. Isomers

(iv) One of the following chemical equations is an example of the precipitation reaction.

- A. $\text{AgNO}_{3(\text{aq})} + \text{NaCl}_{(\text{aq})} \rightarrow \text{AgCl}_{(\text{s})} + \text{NaNO}_{3(\text{aq})}$
B. $\text{NaOH}_{(\text{aq})} + \text{HCl}_{(\text{aq})} \rightarrow \text{NaCl}_{(\text{aq})} + \text{H}_2\text{O}_{(\text{l})}$
C. $\text{CaCO}_{3(\text{s})} \xrightarrow{\Delta} \text{CaO}_{(\text{s})} + \text{CO}_{2(\text{g})}$
D. $\text{Zn}_{(\text{s})} + 2\text{HCl}_{(\text{aq})} \rightarrow \text{ZnCl}_{2(\text{aq})} + \text{H}_{2(\text{g})}$
E. $\text{HCl}_{(\text{g})} \xrightarrow{\text{H}_2\text{O}} \text{HCl}_{(\text{aq})}$

Fullbrightz.Com

(v) The name hydrogen originates from the Greek word "hydro" and "gene" meaning hydrogen is

- A. Water fearing gas B. Fire forming gas ()
C. Water forming gas D. Electric power generator
E. Acid forming gas

(vi) Portable water is the one which is _____.

- A. Good for transport B. Kept in pots for different uses ()
C. Clean and safe for drinking D. In all forms of matter

(vii) Given that thermochemical equation:

$4\text{NH}_{3(\text{g})} + 7\text{O}_{2(\text{g})} \rightleftharpoons 4\text{NO}_{2(\text{g})} + 6\text{H}_2\text{O}_{(\text{l})} \Delta H = -113\text{KJ}$ how can you increase the products?

- A. Low pressure and temperature B. High pressure and temperature ()
C. Low pressure and high temperature D. High pressure and low temperature
E. High surface area and low pressure

(viii) Access to safety equipment should never be blocked by any object because _____.

- A. It is just a simple law
B. There must be space for people to move ()
C. The equipment is used every day
D. It is important to reach safety equipment quickly in case of an accident
E. There must be a little space for people to move

- (ix) When Iron (II) sulphate is heated strongly it decomposes to form
 A. Iron(III) oxide and sulphur trioxide
 B. Iron (III) oxide and sulphur dioxide
 C. Iron (III) oxide, sulphur dioxide and oxygen
 D. Iron (III) oxide, sulphur trioxide and sulphur dioxide
 E. Iron (II) oxide, sulphur dioxide and oxygen
- (x) Permanent hardness of water is due to the presence of some salts. These salts can be:
 A. Magnesium bicarbonate or calcium sulphate
 B. Magnesium bicarbonate or magnesium sulphate
 C. Calcium sulphate or magnesium sulphate
 D. Calcium bicarbonate or magnesium bicarbonate
 E. Sodium sulphate or sodium chloride

Fullbrightz.Com

2. Match the items in list A with the corresponding responses in list B by writing the letter of the correct responses beside the items number in the answer booklet provided.

LIST A	LIST B
(i) Flammable	A. A substance that can burn your skin.
(ii) Harmful	B. Catches fire easily.
(iii) Toxic	C. Hazardous, can cause damage to organs from a short term exposure.
(iv) Corrosive	D. Poisonous and cause death.
(v) Explosive	E. Substance that causes small fire to become big.
(vi) oxidants	F. Causes serious long-term health effects such as cancer, breathing, difficulties and damaging organs
	G. This substance is harmful or poisonous
	H. Blasts easily

SECTION B: (54 MARKS)

Answer ALL questions from this section

3. (a) Explain three states of matter in terms of molecules or particles, use diagram in your explanations where necessary.
 (b) Is iron a metal or a non-metal? Give six reasons.
4. (a) Where do we find safety signs apart from the school? Give three points.
 (b) The black compound reacts with hydrogen gas to form brown copper and water as shown below: $CuO_{(s)} + H_{2(g)} \rightarrow Cu_{(s)} + H_2O_{(l)}$
 (i) Suggest the type of reaction
 (ii) Which species is a reducing agent? Give reason.
 (iii) Which species undergoes oxidation? Give reason.
5. (a) Element X, Y and Z have atomic number 17, 18 and 20 respectively.
 (i) Write the electronic configuration of each elements
 (ii) Basing on reactivity, which of the above element is likely to be found in uncombined state?

- (b) (i) Write down three (03) characteristics of a bond formed between X and Z.
 (ii) Write the chemical formula of a compound formed when X combines with Z.
 (iii) Name the type of bond formed when X and Y combines.
6. (a) There are various classes of metal oxides which are very useful in day to day life. Support this statement by using three (03) points.
 (b) With the aid of chemical equation explain possible observation which will be seen when:-
 (i) Damp blue litmus paper immersed in a gas jar containing chlorine gas.
 (ii) Red flower immersed in a gas jar containing chlorine gas.
 (iii) Water added in a chlorine gas jar.
 (c) A current of 0.5A were made to flow through silver voltammeter for 40 minutes. Calculate the mass of silver deposited and equivalent weight of silver.
7. (a) Use of charcoal as a source of fuel is not advised/emphasized. Support this statement by three (03) points.
 (b) A mass of 14.3g of hydrated sodium carbonate solution ($\text{Na}_2\text{CO}_3 \cdot x\text{H}_2\text{O}$) was dissolved in water and diluted to make 250cm^3 of solution. Then 25cm^3 of the solution was titrated with 0.5M Hydrochloric acid. The volume of acid used was 20cm^3 . Determine the number of molecule of water of crystallization X in ($\text{Na}_2\text{CO}_3 \cdot x\text{H}_2\text{O}$).
8. (a) Draw the structural formula of the following compound.
 (i) 2, 3- dimethylpentan-2-ol. (ii) But-2-ene
 (iii) 2,3-dibromohexanoic acid
 (b) Write a balanced reaction taking place when:
 (i) Methane is mixed with chlorine left on light
 (ii) Ethene is passed in bromine water
 (iii) Edible alcohol is mixed with lime juice solution before drinking
 (c) Name two main products formed when:
 (i) Hot concentrated sulphuric acid is added to sugar.
 (ii) Hot concentrated sulphuric acid added to ethanol.

Fullbrightz.Com

SECTION C: (30 MARKS)

Answer only two (2) questions in this section.

9. A fertile soil is not necessarily productive. Justify the statement by using five points.
10. Global warming is a huge problem resulting from environmental pollution. By using three points explain the effect of global warming and three ways used to overcome global warming.
11. Tanzania is among the world countries gifted with valuable elements like Diamond, Gold, Silver and Iron. Most of Tanzanians remain poor because of lacking education on how to extract and use minerals. As a Chemistry pioneer, write procedures which can be used to extract iron from its chief ore.

THE UNITED REPUBLIC OF TANZANIA
PRESIDENT'S OFFICE
REGIONAL ADMINISTRATION AND LOCAL GOVERNMENT



FORM FOUR REGIONAL MOCK EXAMINATION
TABORA REGION

032/2A

CHEMISTRY- 2A
(ACTUAL PRACTICAL, A)
(For both School and Private Candidates)

Time: 2:30 Hours

Tuesday, May 16, 2023, a.m.

INSTRUCTIONS

1. This paper consists of two (2) questions
2. Answer ALL questions
3. Each question carries 25 marks
4. Write your examination number on every page of your answer booklet
5. Qualitative analysis guide sheet authorized by NECTA and non-programmable calculator are allowed
6. Cellular phone and any unauthorized materials are not allowed in the examination room
7. You may use the following constants

Atomic masses:

H=1, C=12, O=16, Na=23, K=39, Cl=35.5, Cu=63.5, S=32, Ca=40

1Litre=1dm³=1000cm³

Fullbrightz.Com

This paper consists of 2 printed pages

1. You have been provided with the following solutions:

T: 0.1M sulphuric acid solution

U: Sodium hydroxide solution

M: Methyl orange indicator (M.O)

Fullbrightz.Com

Procedure:

- (i) Pipette 20cm^3 or 25cm^3 of solution U in a conical flask.
- (ii) Add three (3) drops of M in a conical flask containing solution U
- (iii) Titrate solution T from the burette against solution U in the conical flask until the indicator signals the end point.
- (iv) Repeat the procedure to obtain three more readings and record your results in a tabular form.

Questions

- (a) Calculate the volume of T required by 25cm^3 or 20cm^3 of solution U.
 - (b) Calculate the number of moles of T required by 25cm^3 or 20cm^3 of U
 - (c) Calculate number of moles of solution U in 25cm^3 or 20cm^3
 - (d) Calculate the molarity of solution U
 - (e) Determine the concentration of U in grams per litre.
2. (a) You are provided with a sample of salt Labeled O, containing one cation and one anion. Carry out qualitative analysis to identify the cation and anion, present and record your results in a sample table form provided below in your answer booklet provided.

S/N	Experiment	Observation	Inference

- (i) Cation in sample O is.....
 - (ii) Anion in sample O is
- (b) (i) Explain two applications of the knowledge used to identify composition of salt sample O .
- (ii) Suggest one use of sample O in food production and processing industries.

THE UNITED REPUBLIC OF TANZANIA
PRESIDENT'S OFFICE
REGIONAL ADMINISTRATION AND LOCAL GOVERNMENT



Fullbrightz.Com

FORM FOUR REGIONAL MOCK EXAMINATION
TABORA REGION

033/1

BIOLOGY -1

(For Both School and Private candidate)

Time: 3 Hours

Wednesday, May 10, 2023, a.m.

INSTRUCTIONS

1. This paper consists of three sections A, B and C with a total of eleven (11) questions.
2. Answer all questions in sections A and B and any two (02) questions from section C.
3. Section A carries sixteen (16) marks, section B carries fifty four (54) marks and section C carries thirty (30) marks.
4. All writings should be in blue or black ink except for drawings/diagrams that pencil must be used. .
5. Cellular phone and any unauthorized materials are not allowed in the examination room.
6. Write your Examination number on every page of your answer booklet(s) provided.

This paper consists of 4 printed pages

SECTION A: (16 MARKS)

Answer all questions in this section.

1. For each of the following items (i) – (x), choose the most correct answer from the given alternatives and write its letter beside the item number in the answer booklet provided.

(i) If you accidentally swallow a poison, you are advised to take a glass of milk because the milk

- A. Induces vomiting B. Neutralizes poison C. Relieves pain ()
D. Prevents shock E. Gives the appetite

(ii) The type of muscles that make the heart is

- A. Triceps B. Biceps C. Cardiac ()
D. Voluntary E. Involuntary

(iii) A respiratory surface in fish is

- A. Spiracles B. Fins C. Gills ()
D. Operculum E. Lungs

(iv) Which of the following part allows water to enter into the seed before germination?

- A. Testa B. Plumule C. Radicle ()
D. Cotyledon E. Micropyle

(v) The offspring of crosses between red petaled and white petaled flowering plants are always found to be pink. This is example of

- A. Cross over B. Incomplete dominance
C. Codominance D. Recessive dominant
E. Complete dominant

Fullbrightz.Com

(vi) A person who is riding a bicycle can waste a lot of water through sweating. Which of the following organ is responsible for the water loss

- A. Stomach B. Kidney C. Liver ()
D. Skin E. Lungs

(vii) Handling of waste differs according to the type of wastes a person deals with; the medical wastes are described as

- A. Infections wastes B. Biohazardous C. Re-usable ()
D. Biogradable E. Recyclable

(viii) During reproduction male and female gametes fuse together to form a new offspring of their kind. In human, sperms usually have the following genotype.

- A. XX B. X C. XY ()
D. YY E. XXYY

(ix) Human and Ruminants possess stomach for digestion of food substances, which among the following is a true stomach in Ruminants?

- A. Rumen B. Ileum C. Rectum ()
D. Abomasums E. Omasum

(x) Which of the following statement represent sense organs?

- (i) Tongue, skin, liver, kidney and nose (ii) Tongue, nose, skin, eyes and ear.
(iii) Tongue, mouth, skin, eyes and ears. (iv) Tongue, pancreas, eyes, nose and ears.
(v) Tongue, mouth, eyes, skin and ears.

2. Match the responses in list B with the word/phrases in list A by writing the letter of the correct response beside the item number in the answer booklet provided.

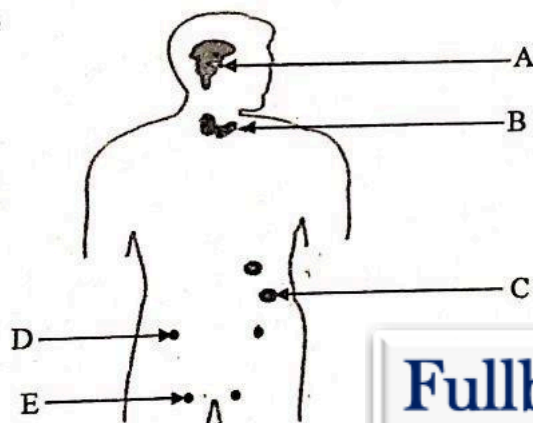
LIST A	LIST B
(i) Ptyalin	A: It kills germs/bacteria and activates the functions of other enzymes
(ii) Lipase	B: Coagulates milk after sucking inside the stomach
(iii) Trypsin	C: Breaks protein to peptides.
(iv) Hydrochloric Acid (HCL)	D: Breaks lipids to fatty acid and glycerol
(iv) Renin	E: Breaks peptide to Amino acids
(v) Mucus	F: Breaks starch to maltose.
	G: Acts as lubricant to reduce friction to avoid corrosion of the stomach lining.

SECTION B: (54 MARKS)

3. (a) Human being makes observation by using sense organs. Identify the sense organ that could help you observe if a coconut is:

- (i) Round (ii) Rough
(iii) Sweet (iv) Smelling nice

- (b) Observe the following figure of human being and then answer the questions that follow ques



Fullbrightz.Com

- (i) State the name of hormone glands labeled, A, B, C, D and E
(ii) What is the function of hormone secreted from each glands labeled A, B, C, D and E.
4. (a) We as animals use muscular movement that is made by contractions and relaxation of muscles. Name the structures used for movement in the following organisms
(i) Amoeba (ii) Paramecium (iii) Euglena
- (b) By using five points, briefly explain why human being need skeleton
5. In his tour Mr. Songambe saw a zebra eating grasses, later on he saw a lion chasing that zebra in order to eat.
- (a) (i) Identify the feeding relationship
(ii) State the meaning of feeding relationship, mentioned in 5(a) (i) above.