

N/A (3)

Bonemold



“Also known as 'Great House' armor in Morrowind, bonemold is a medium weight armor affordable only by Dunmer nobles. Each piece is assembled from many pieces of softened shell, molded into shape, then bonded and reinforced with resin glues.”

Chuzei





Native
Chuzi
Armor

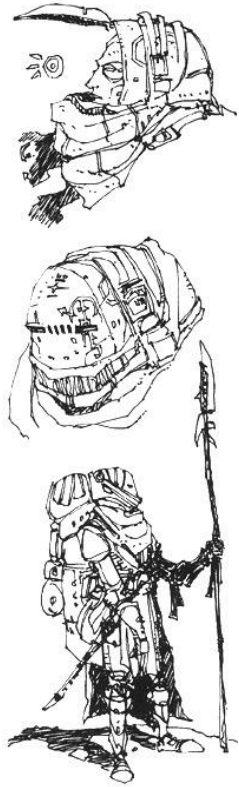
Predominantly used by Western Morrowind mercenaries hired throughout the province. Metal mail is used underneath the Bonemold plates for extra protection.

Maradlai



Rough and jagged Bonemold used by Bandits. Possibly made by disgraced Redoran exiles?

Sammas



The Adventurers Bonemold, used throughout Morrowind, especially in the areas with bad weather and harsh environments like Armun Wastes, Sundered Scar and Telvannis.

-Misc Helmets-



Hlaalu (6)

Armun-An



(Vvardenfell Enforcers) Vvardenfell enforcement armor that was mass produced during the initial colonization of Vvardenfell and the tax revolts, the excess was sold off to Telvanni and other buyers for profit.

Locations; Balmora, Suran, Gnaar Mok, Hla Oad, Dren Plantation, Arvud, Armun Pass.

Isruhn-An

(Canyons Watch)



Canyon
Watch
Armor



our



ed
pes

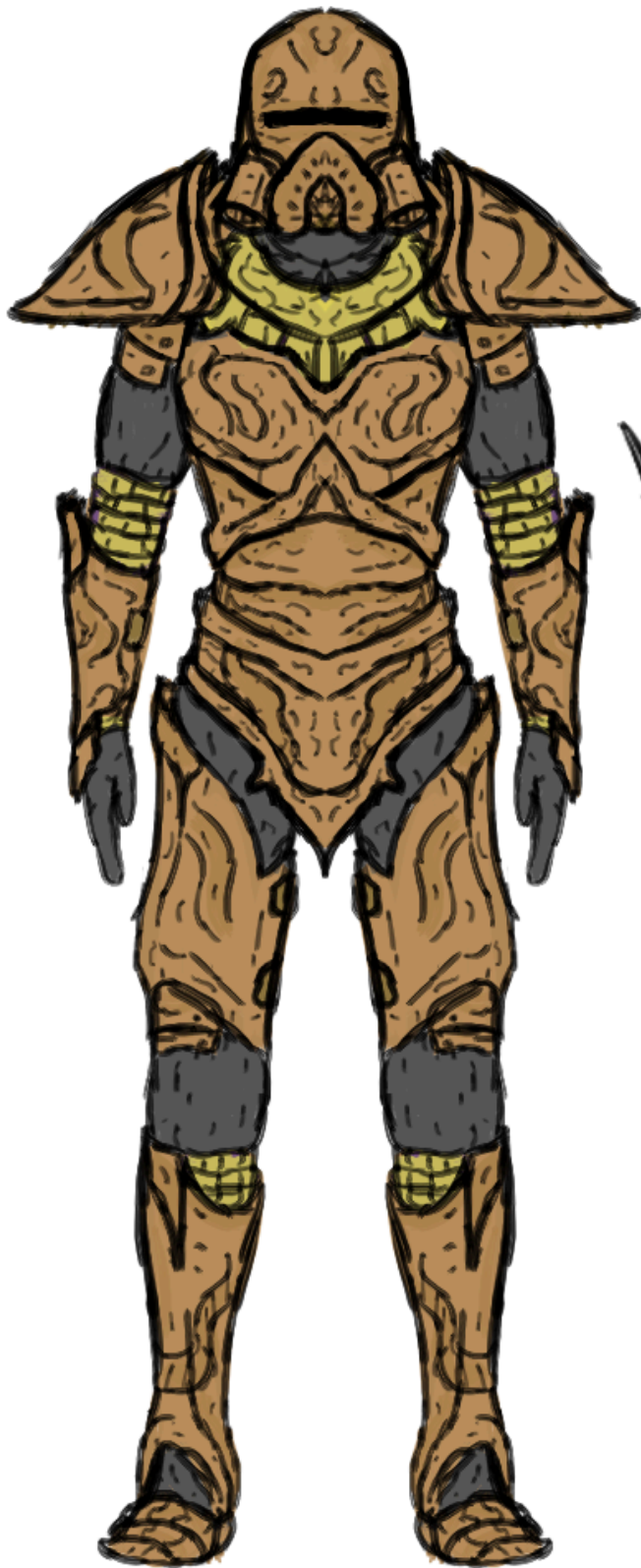


Designed to be more breathable and less cumbersome but still protective, this armor set is used throughout dry arid canyon regions like Shipal Shin and Roth Roryn as scout and guard armor.

Locations; Narsis, Andothren, Shipal-Sharai, Omaynis, Menaan, Salvelis, Veda's Plantation, Old Dren Plantation, Adavrin Ranch, Savrethi Distillery, Vathras Plantation, Reluran.

Morath-An

(Woods Watch)



Kragen
Armor



A style originating in the Othreleth Woods region, it has become popular in the region for its quality protection and breathing apparatus for filtering ash and mushroom spores. Widely used by settlement and caravan guards.

Locations; Kragenmoor, Andrethis, Hla Rud, Ilaanam, Narusa Winery, Fervinthil, Narun, Reluran, Arvud.

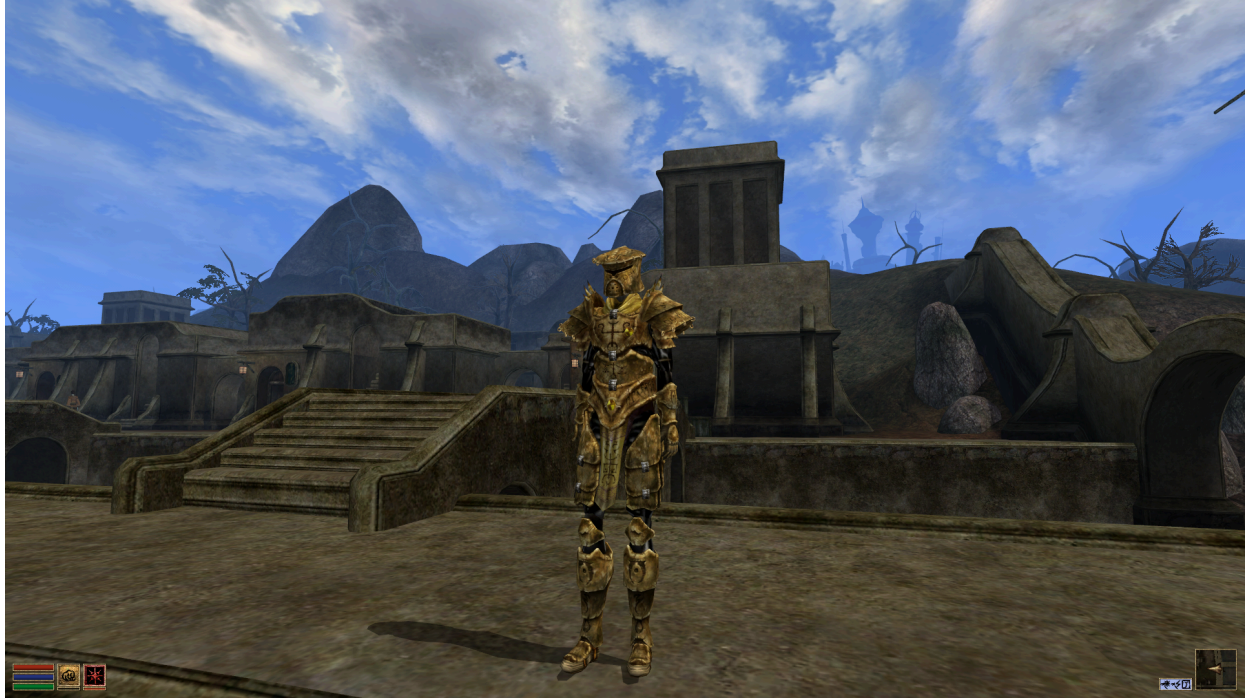
Ouadra-An

(Rivers Watch)



Mlaalu
Riverwatch



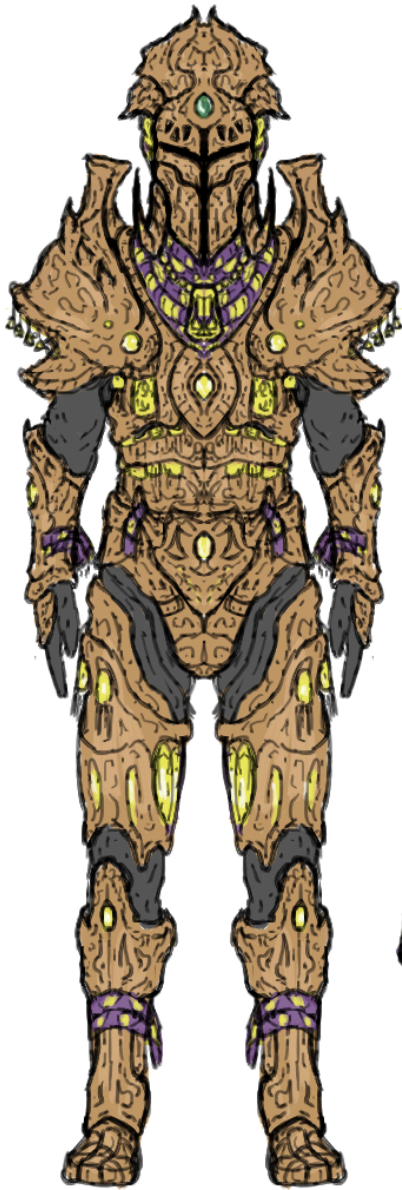


Originally intended to only watch the river for escaped slaves, the Hlaalu river watch quickly assumed the role of protecting Hlaalu lands and intimidating any Indoril presence on the other side of the Thir.

Locations; Narsis, Andothren, Hlan Oek, Gol Mok, Indal-Ruhn, Indathren, Nav Adaram, Othmura, Hlerynhul, Sadrathim, Mudrethi Plantation, Oran Plantation.

Hlaryn-An

(Narsis Watch)



Hlaalu
Narsis Watch





Skilled and ornate guards of the Hlaalu upper class, adorned with yellow and green glass, gold ornaments and fine silk. The helmet resembles that of the horns and crest on the Canyon Thresher, a prized and dangerous beast from their homeland of Shipal Shin.

Locations; Narsis

Redoran (8)

Gah-Julan “Great Benefit”

(Ghosts March)



Armor originating in Julian Shar, it was brought over to the Black Isle during its colonization and councilor relocation. Shawls and hoods are deployed for extra protection against the harsh ash storms.

Locations; Ald-Ruhn, Maar Gan, Gnisiss, Khuul, Ald Velothi, Indarys Manor, Sunmul, Ildrim, Uvandas, Melothran.

Bal-Darum “Stones Impassible”

(Stones March)



Stone
March
Armer



Tough and durable armor made to go toe to toe with Mountain Orcs of Marahk-Bazul and trespassers of the Redoran Border.

Locations; Bodrum, Uman, Malahk Pass, Veranis, Mandaryon, Rhanim, [Stronghold].

Mar-Revul “Waters Rushing”

(Waters March)



Waters
March
Armor



Armor of the Waters March Redoran, just as its creators this armor has all but vanished in use, save for the remaining warriors of Ald Iuval and Marak.

Locations; Ald Iuval, Ald Marak, various tombs across Waters March former territory.

Val-Ashar

(Ashes March)



Constructed to insulate the wearer and filter out ash and mushroom spores of the Grey meadows region.

Locations; Silgrad, Falen Mar and various patrols

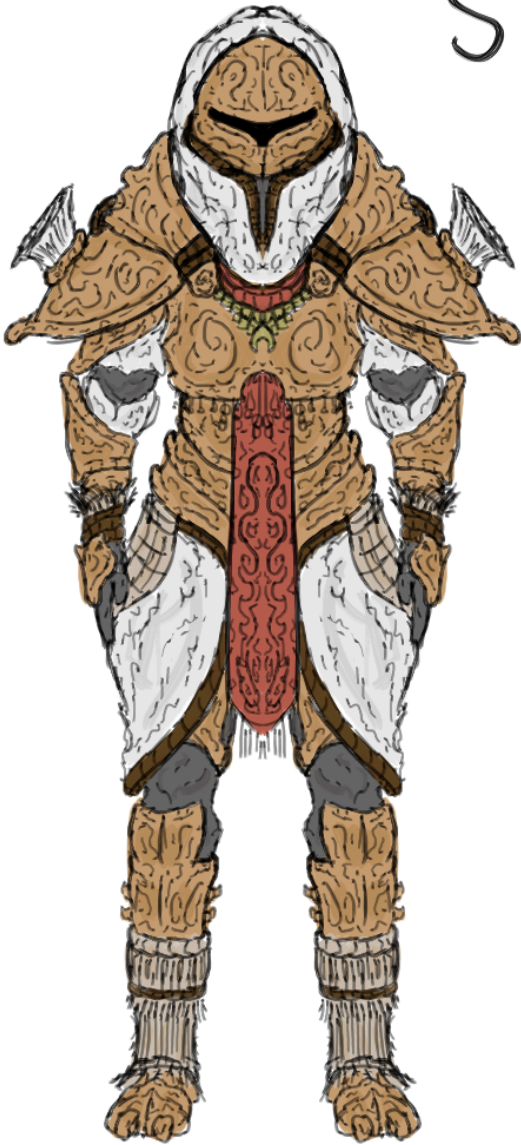
Fal-Maryon

(Snows March)



North Redoran armor





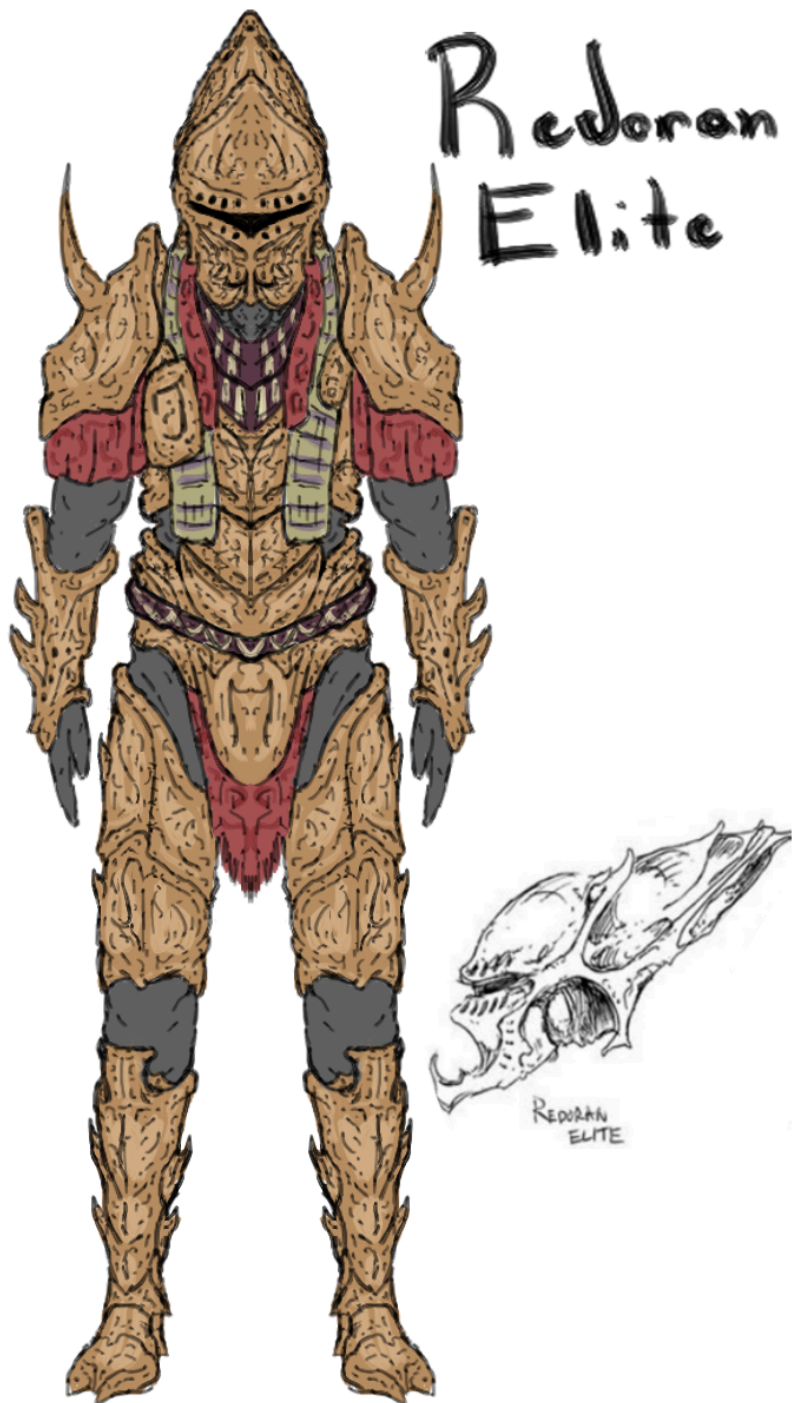
Snows
March
Armor



Warm and heavily insulated armor for protection against the harsh cold of the Velothi Mountain borders and Great Valley of Northwestern mainland Morrowind.

Locations; Cormaris, Althandis, Ald Umbeil, Mandul, Hulyln

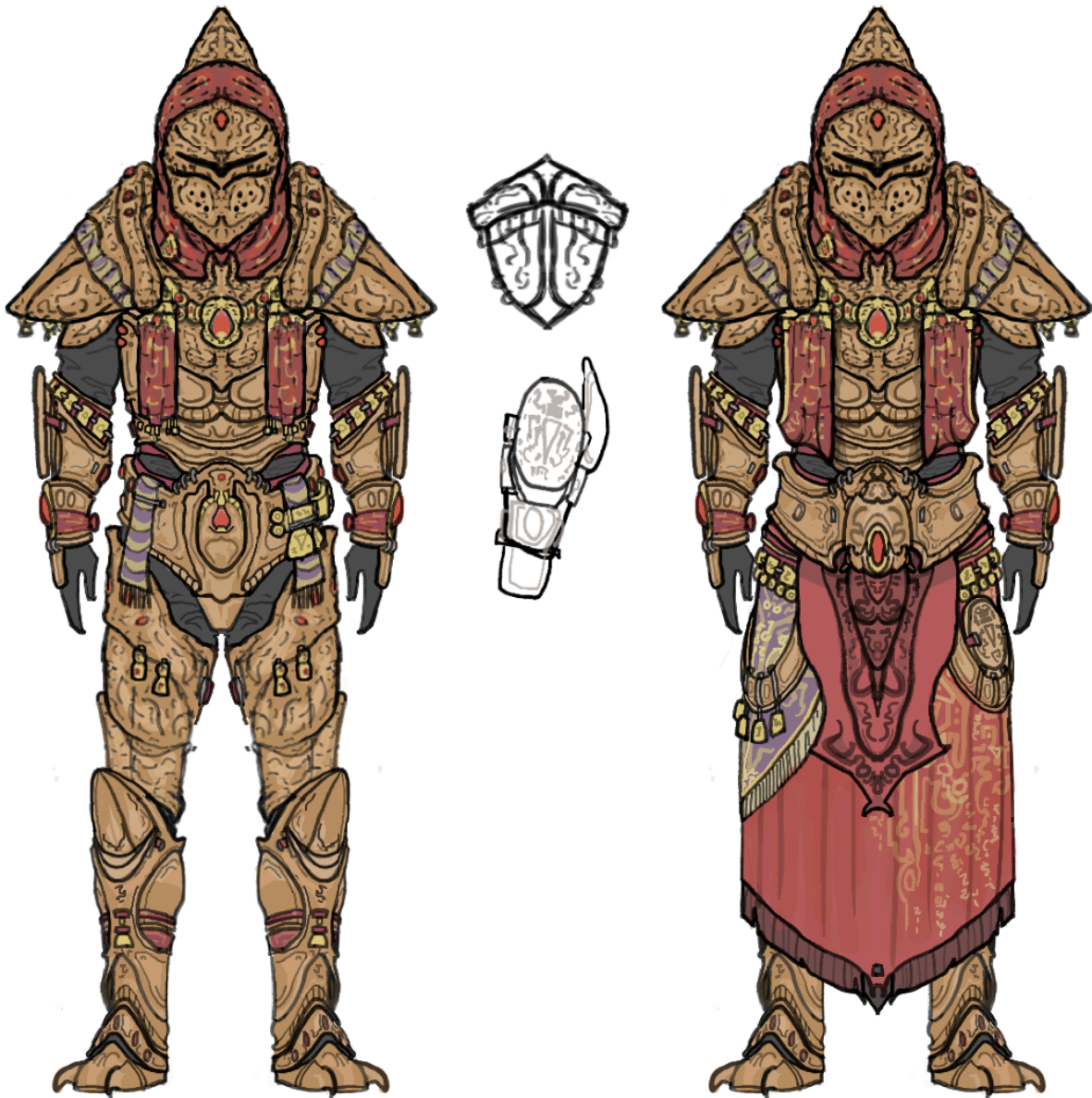
Redoran Elite

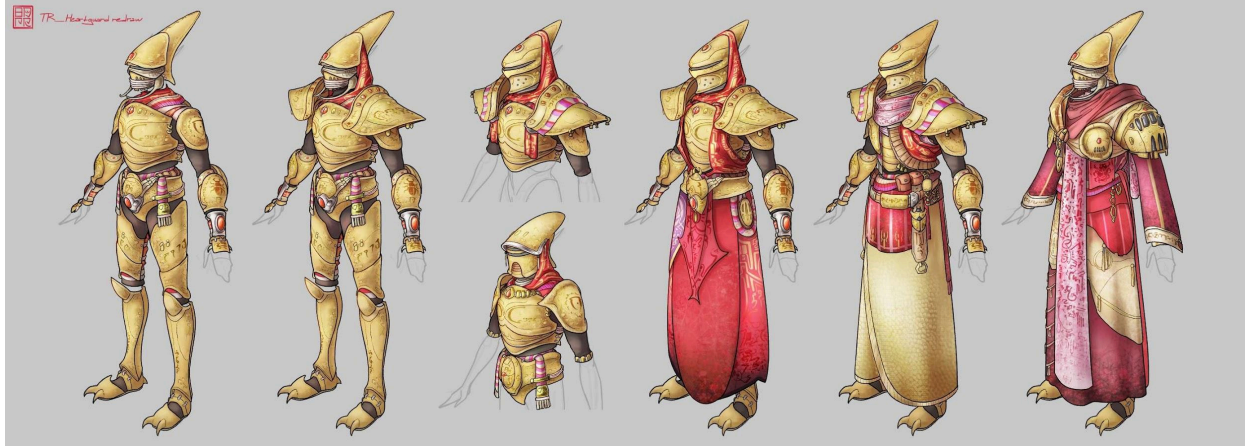


Slightly adorned but practical armor specially molded for the elite warriors of the Great House Redoran.

Locations; Various Redoran Settlements

Redoran Hearthguard







Highly adorned and garnished armor worn by the finest house warriors to protect and defend the great Redoran hearth home of Blacklight.

Locations; Blacklight, Julian Shar

Redoran Master



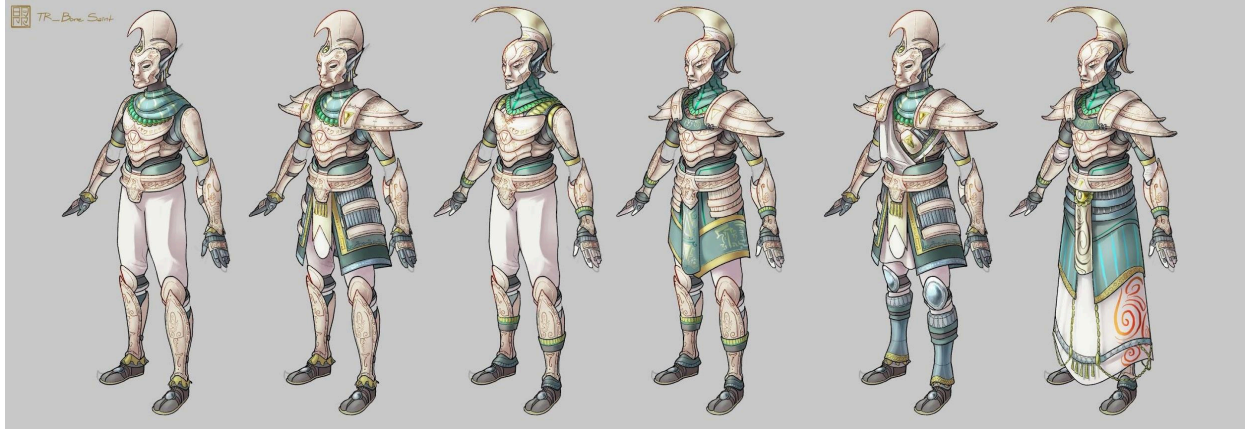
Rare armor created for and worn only by the most trusted and esteemed Masters of the Great House Redoran.

Locations; Blacklight, Ald'ruhn, Cormaris, Veranis, Silgrad, Ald Iuval

Indoril (8)

Bone Saint





Bonemold constructed of grounded bones from venerated saints and selectively worn by high ranking members of the Great House Indoril.

Locations; Found in various Indoril Settlements; possibly Almalexia.

Iuvan-Thirine

(Thir River)



DDR #



Thirteen
Armor



Samuel Rebirth
go home
with love





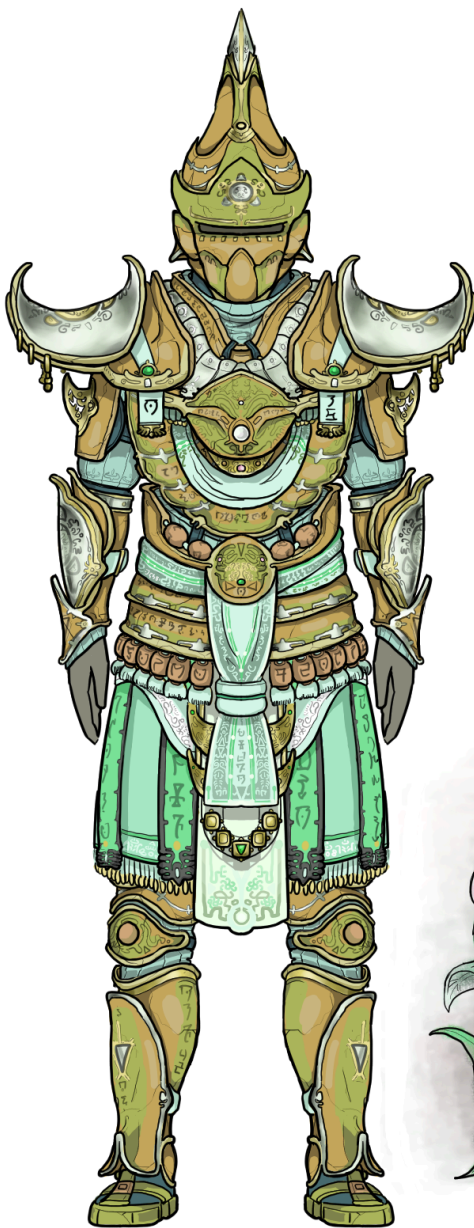
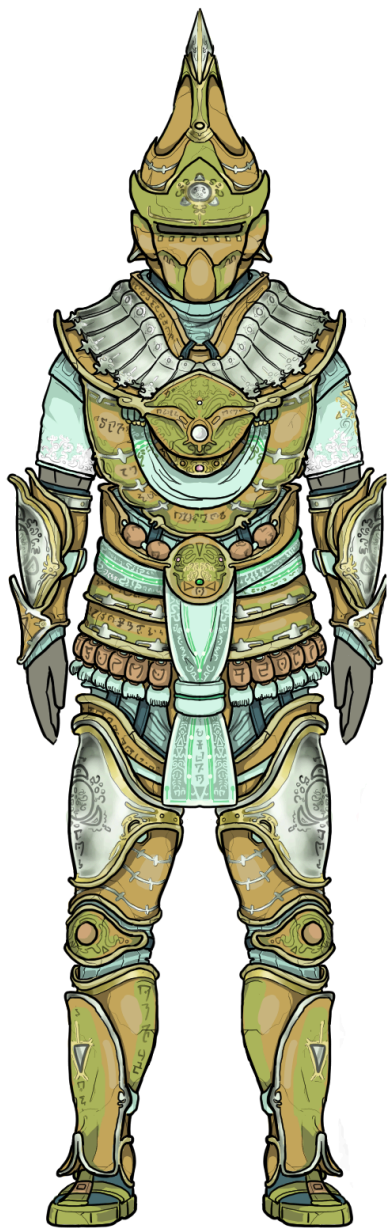
Locations; Roa Dyr, Nanaav, Tur Julan, Old Ebonheart.

Dorun-Khulam

(Orethan Heartlands)



DDR #



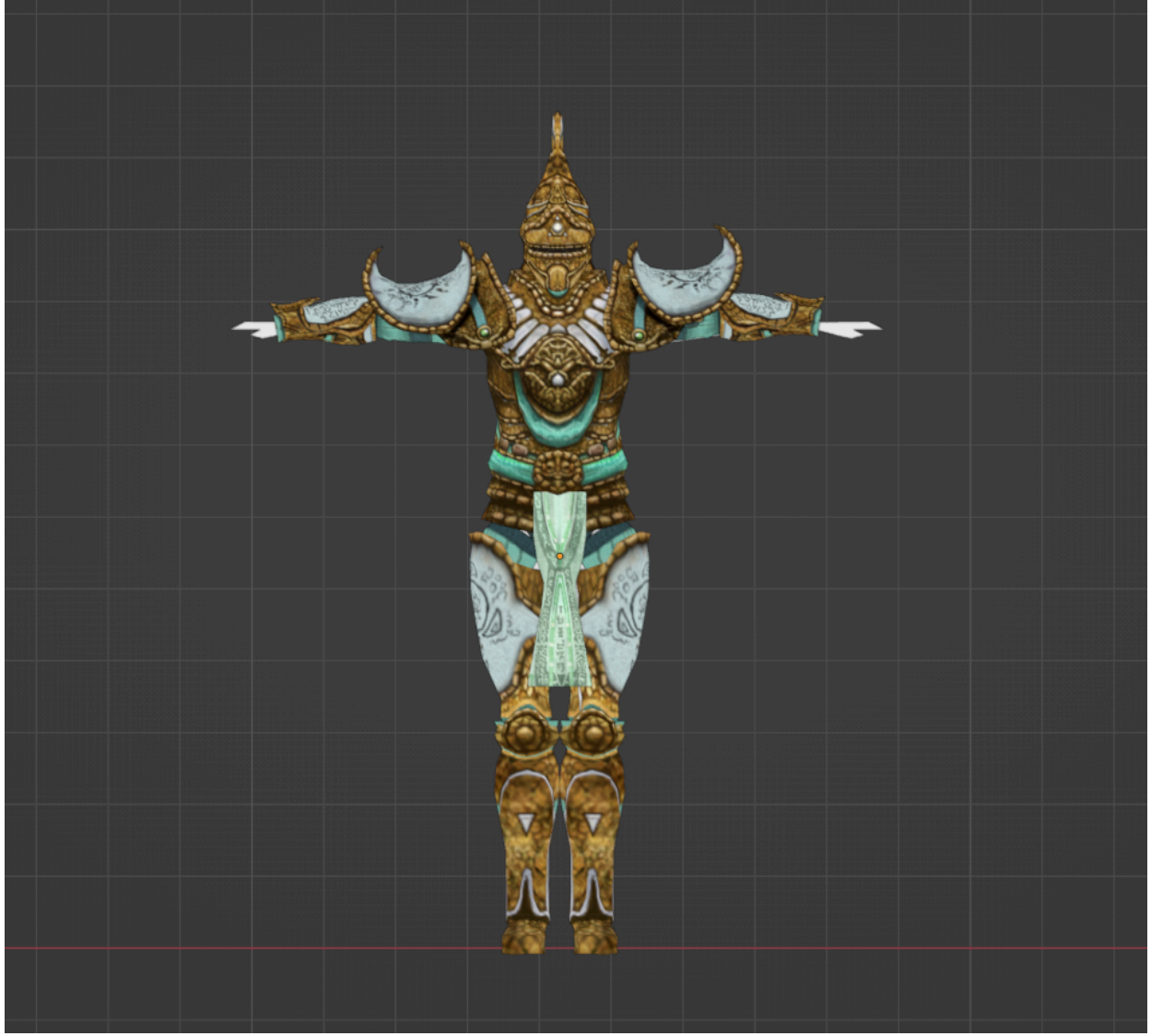
Orethran
Armor





TR_Challenger redraw





Locations; Almalexia, Yed Neyn, Tilmeth, Dreynim, Yassind.

Mora-Varul

(Sundered Scar)

BOOK



Mora
Armor





Locations; Gorne, Id Vano, Mora Ancestral Tomb.

Nedyn-Edayn

(Nedothril)



DDR #



Nedathiri
Armor





TR_Nedothiri redraw





Locations; Nan Iban

Ulvra-Serad "Stoic Tranquility"

(Mephalan Vales)

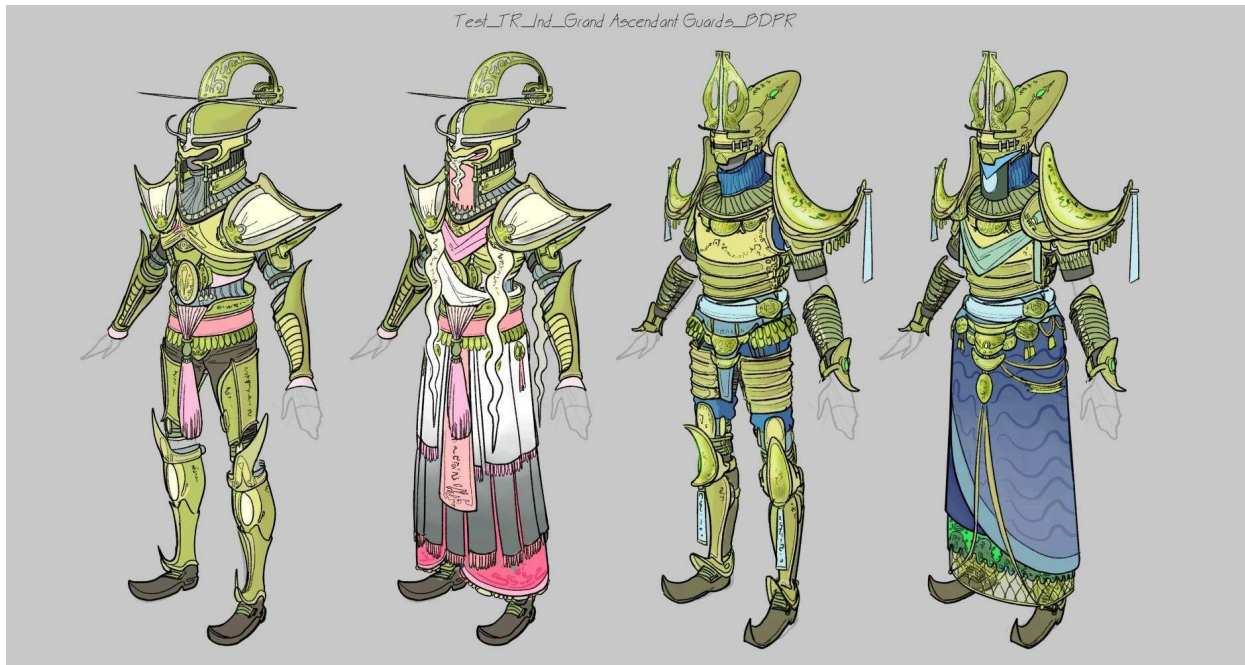




Locations; Draloris, Ammar, Nethril.

-PLACEHOLDER- “Devout Humbleness”

(Grand Ascendent)

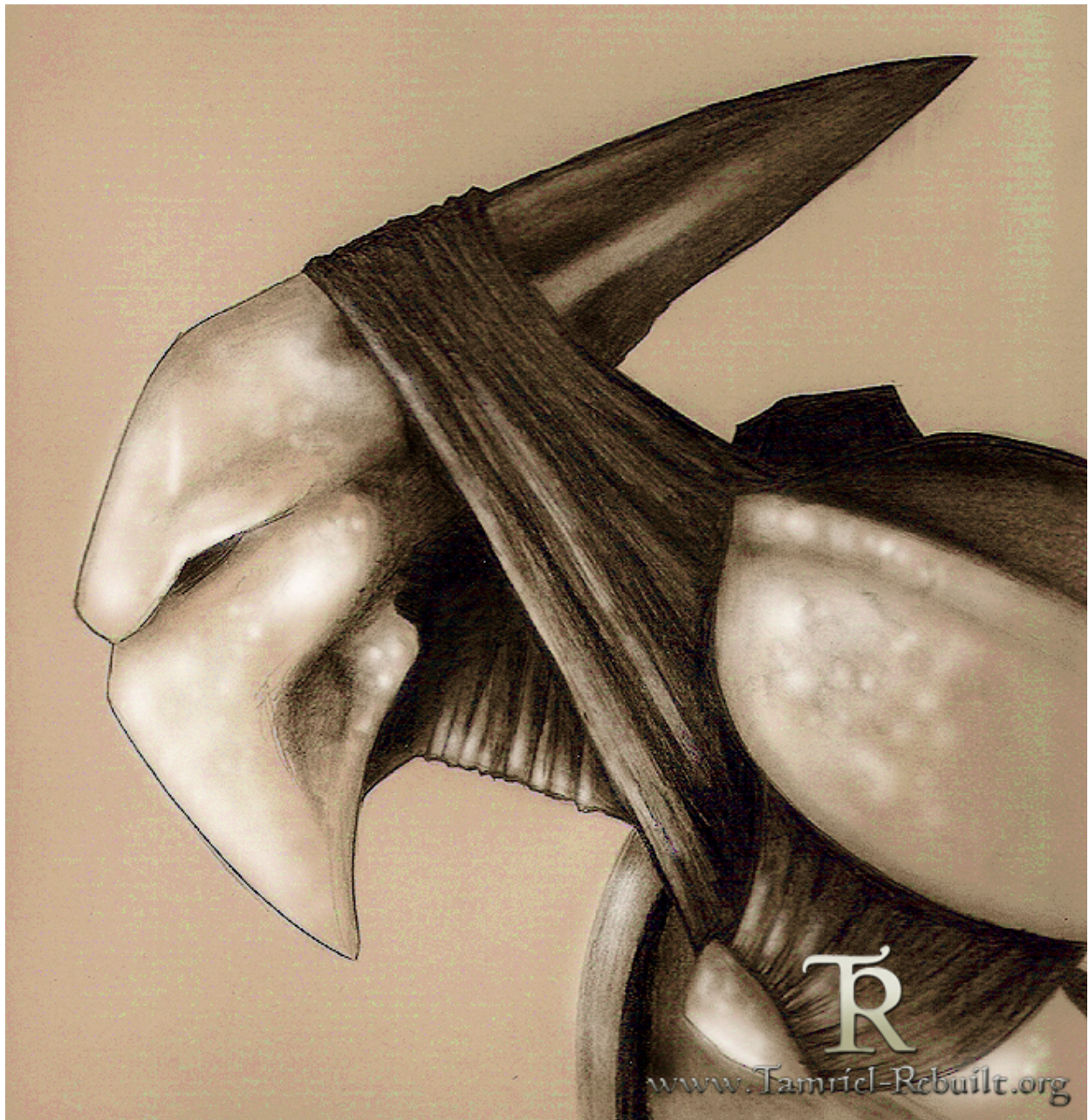


Locations; Almalexia.

Dres (6)

*Locations subject to change

Slave Hunter



Slave
Hunter



Tear, Various Dres Slave Hunter characters.

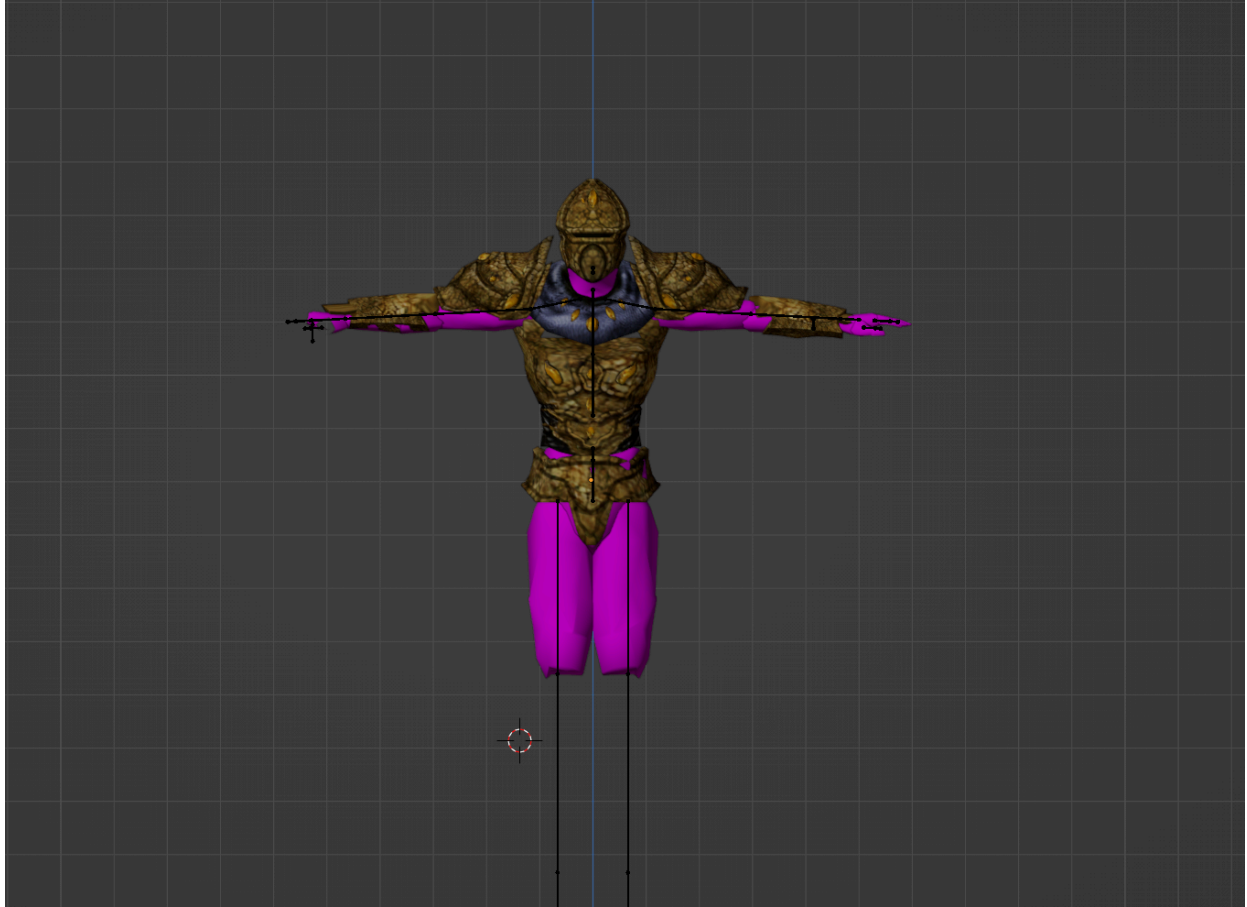
-PLACEHOLDER-

(Amber Forest)



Amber





Alavelis.

-PLACEHOLDER-

(Central Plains)



Plains



Ald Horak.

-PLACEHOLDER-

(Salt Marshes)

Swamp





Rathendis

-PLACEHOLDER-

(Mudflats)

Mudflats



Silnion.

-PLACEHOLDER-

(Satchem Ithil)

Satchem
Ithel

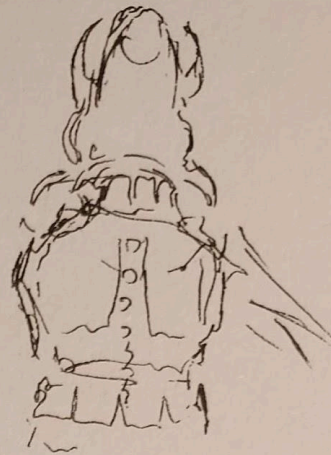


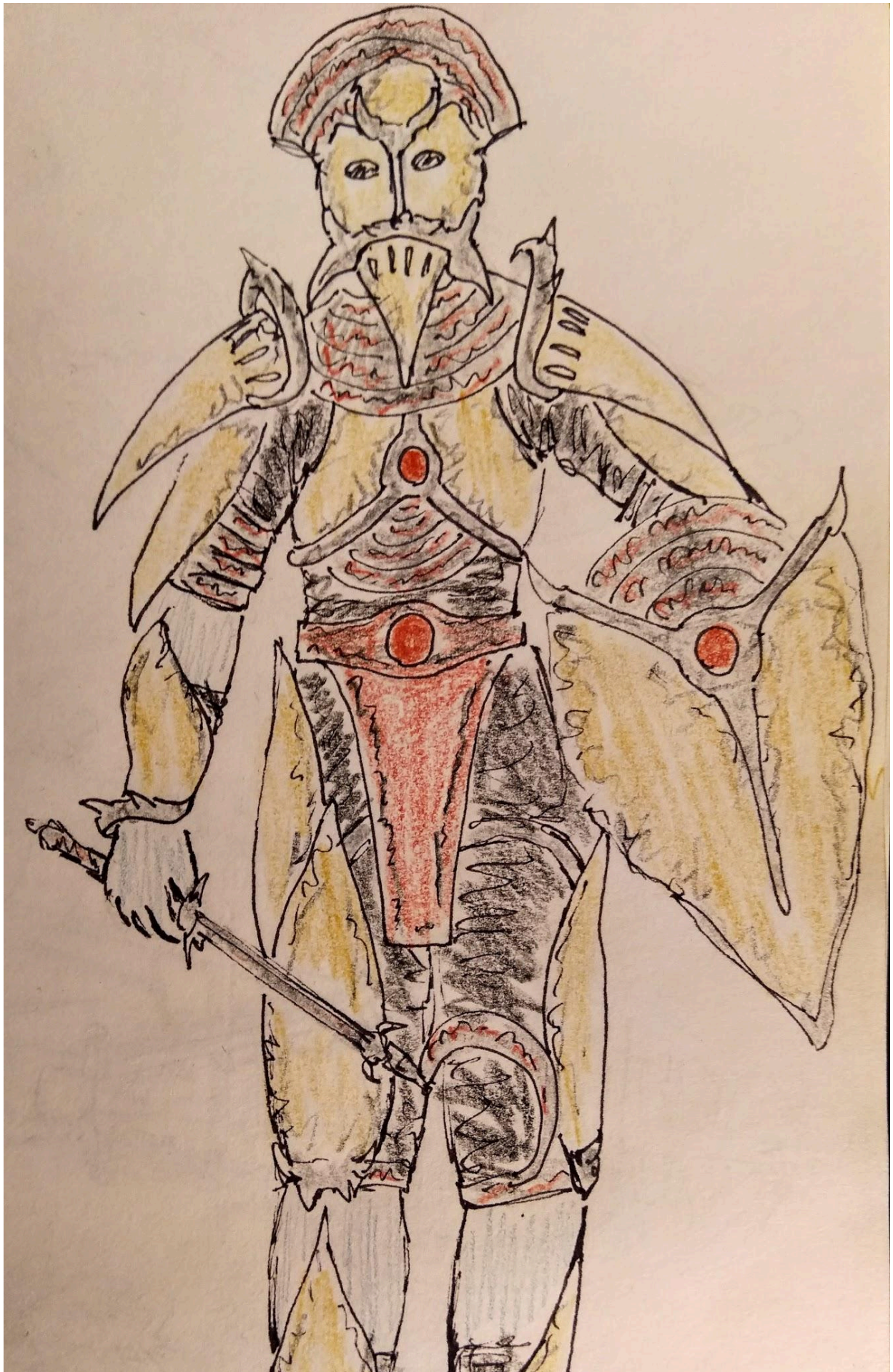
Tear.

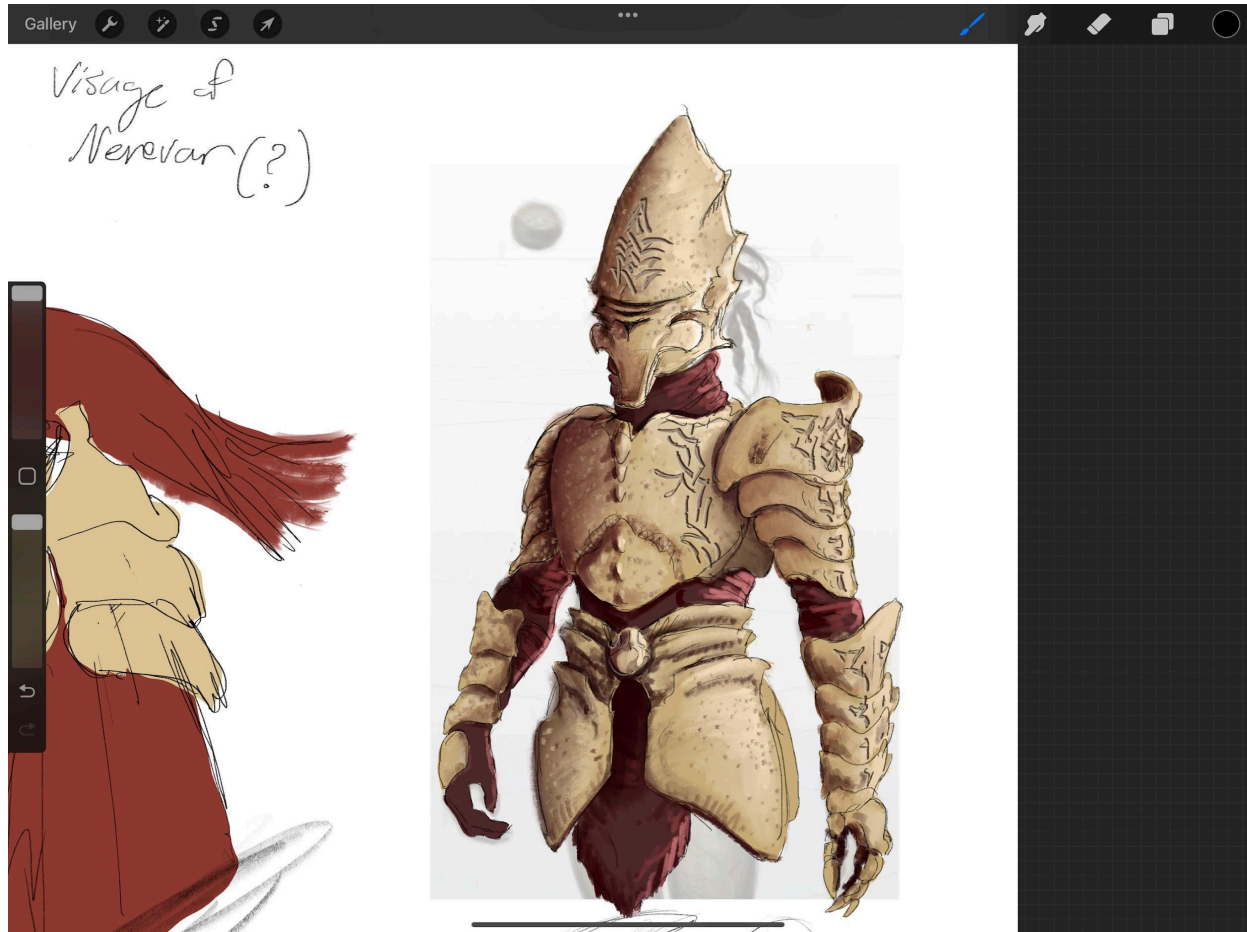
Ancient (2)

Dagoth

DAGOTH
BONEMOLD







Ancient and aged with time, the Bonemold of the former House Dagoth was mostly destroyed after their defeat at Red Mountain, only a few remain in existence. (Gameplay terms, only one set spread out)

Cantemiric Velothi

Artists and Modelers:

Pickles

DharmaPR

Gnomey

Tammilsake

Ladkohit
Lamb Shark
Venusprout
Rats
Asylum