

*"The function of education is to teach one to think intensively and to think critically. Intelligence plus character - that is the goal of true education."  
Martin Luther King, Jr.*

Monday/Tuesday morning greetings to you all.

***Updates, Reminders, and Instructional Supports...***

***(Teacher Evaluation Standard III: Teachers Know the Content They Teach, Teacher Evaluation Standard IV: Teachers Facilitate Learning for Their Students, & Standard V: Teachers Reflect on Their Practice)***

**ALPHABET KNOWLEDGE ASSESSMENT:** Last week I checked in with each of you to ensure you had added the Alphabet Knowledge assessment to your Tracker in MasteryConnect and could access it when the time came to enter the data. In the bulleted list below you will find the documents you will utilize to administer the Alphabet Knowledge assessments to your students **beginning January 22**. We are standardizing the administration of the Alphabet Knowledge assessment this year, so **use the resources found in the links below**. These documents were also added to the MPK Playbook in the Assessment section.

- **[AK Administration Directions](#)** - I intended to go over these with you during our PLC last week, but the weather derailed those plans. *Print and read these directions carefully BEFORE you administer the assessments.*
- **Student probe sheets** - Print each probe sheet and place them in a clear sleeve. You may also choose to use a half sheet of construction paper or cardstock to reveal one line of letters at a time.
  - [Uppercase & Lowercase](#)
  - [Letter sounds](#)
- **[Teacher recording form - individual](#)** - Copy one page for each student in your class to record their CORRECT responses. Record the number of uppercase, lowercase letters, and letter sounds correctly identified by the student.
- **MasteryConnect** - Combine the **total number of uppercase & lowercase letters** the student correctly identified and record that number in the first column (12g). Record the **number of sounds** the students identified in the second column (12h).
- **TSG** - You may take a photo of the individual letter and sound knowledge recording form and upload it into TSG for evidence of ODL 16a & 16b.

**JANUARY SALAD BAR:** If you haven't done so already, make sure you [sign up](#) for the [Zoom PD](#) taking place on January 23.

**PDP MID-YEAR REVIEW:** The Mid-Year PDP review is due on January 31. I will schedule to review the PDP's of my four Mentee's this week when I visit your sites. **Continuing license teachers** should complete their Mid-year PDP following these guidelines:

1. Type in the progress for the actions/activities listed under each goal.  
EXAMPLE: Goal 1: A. I created 5 activities for 3 centers around math skills for low, medium, and high developing students. B. I developed an assessment for the following math skills (counting to 30, identifying numbers to 10, addition and subtraction (more/less) up to 10. Goal 2: A. (same process)
2. Sign off on your PDP and be prepared to share it with your Evaluator.
3. They DO NOT want you to send scanned copies. They need to maintain a fillable PDP's so everyone can type into it. If you need another copy of the fillable PDP, let me know and I will get it for you.

**OUTREACH ACTIVITY:** I will drop off some coloring sheets this week that can be used as an activity for [Crayola Creativity Week](#). Once your class has completed them, I will pick them up. These sheets will be used to show gratitude to supporters of SSMC and MPK. They'll be used in a variety of ways (i.e. sent with donor thank you letters, shared on social media, turned into cards, teacher appreciation, etc.)

**OPTIONAL PAC TIME & SMALL GROUP RESOURCES:** *supplemental activities*

- [ALPHABET KNOWLEDGE](#) (folder) - [ALPHABET KNOWLEDGE](#) (MPP site) - *new additions and reorganization*

- [PHONOLOGICAL AWARENESS](#) (MPP site) - *new additions and reorganization (added separate pages for ODL 15a, 15b, 15c)*

### Alphabet Knowledge~ Distinct Features of Letter Sort ODL 16a

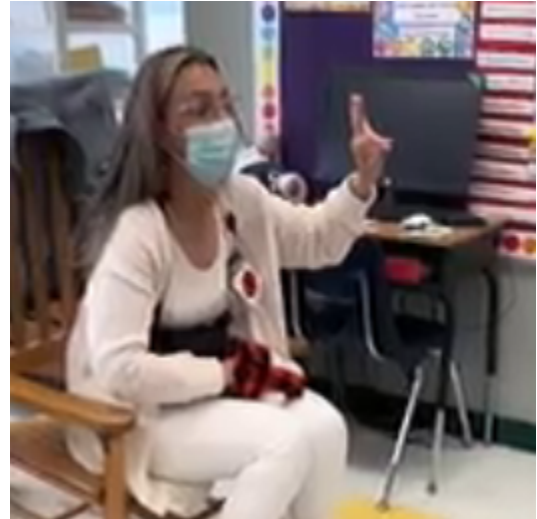
**Distinctive features of letters: straight letters and curved letters~** Now that we've taught the curved letters and the straight letters, these can be sorted during Interest Areas for further practice. Do you have magnetic letters or blue magnetic letter tiles in your manipulatives or library areas? Pull out the following letters and provide a T-chart like the example below for sorting:

Straight lines I -	Curved lines C U U N
i l E F I L H T t	Cc Uu Oo Ss Jj U

### PA - ODL 15c

**Phoneme isolation - blending BALLS study  
Recognition and Identification Stage**

#### Mystery Bag Activity



Click photo for video demonstration

### Brigance

Physical - gross motor

As you plan your Outdoor Gross Motor activities, take the first 5-10 minutes to teach (I do) & allow students to practice (We do; You do) one or more of these physical development activities. Note students who need more practice and intentionally work with them a few more minutes 1:1 before releasing them to play freely. Continue to incorporate these activities until all students can successfully complete them.

Include your intentions on your daily lesson plans.

#### 4 year old expectations

1. Walks heel-to-toe five steps
2. Hops five hops on preferred foot
3. Hops five hops on other foot
4. Stands on one foot for ten seconds
5. Stands on other foot for ten seconds

#### 5 year old expectations

1. Stands on one foot for 10 seconds
2. Stands on other foot for 10 seconds
3. Stands on one foot for one second with eyes closed
4. Stands on other foot for one second with eyes closed
5. Walks backward toe-to-heel four steps

### INSTRUCTIONAL SUPPORTS QUICK LINKS:

- [Pacing Guide](#)
- [MECK Pre-K SharePoint Resource Folder](#)
- [McClanahan's Pre-k Pages](#) (MPP) site: *NOTE: If you are looking for a particular resource, there is a search icon at the top, right corner of each page on my site.*

## QUICK LINKS TO PROGRAM SUPPORT DOCUMENTS:

- [MECK Pre-K Playbook for teachers](#)
- [McClanahan Cohort - SharePoint](#)

### *Dates to Remember...*

#### January

15 - HOLIDAY  
 22 - [ALPHABET KNOWLEDGE assessment](#) window opens  
 22-28 [CRAYOLA CREATIVITY WEEK](#)  
 23 - Zoom PLC  
 25 - Teacher Workday - PD Using Warm Demand to Build Student Achievement  
 26 - Balls study ends - Celebration of Learning  
 29 - **Signs study begins**

#### February

02 - ALPHABET KNOWLEDGE assessment window closes  
 06 - PLC Meeting (Mint Hill Library)  
 07 - [WORLD READ ALOUD DAY](#)  
 09 - Last day to enter TSG data  
 12 - 2nd Trimester Checkpoint window opens  
 14 - Early Release Day - PD TBA  
 19 - HOLIDAY  
 20 - Zoom PLC  
 20 - PAST assessment window opens  
 23 - 2nd Checkpoint window closes - Finalize ALL checkpoints  
 26 - Parent Teacher conferences begin  
 29 - Last day for new enrollments and OT/PT referrals

#### March

01 - Signs Study ends - Celebration of Learning  
 01 - PAST assessment window closes  
 04 - **Insect Study begins**  
 05 - PLC Meeting (Mint Hill Library)  
 08 - Parent Teacher conferences end  
 13 - Early Release Day - PD Restorative Justice: Rethinking Discipline  
 19 - Zoom PLC  
 29 - Teacher Workday

#### April

01 - Spring Break begins  
 09 - PLC Meeting (Mint Hill Library)  
 23 - Zoom PLC  
 26 - Insect study ends - Celebration of Learning  
 29 - **Water study begins**

### *Now on to my schedule...*

*I plan on following this visit schedule but will adjust as needs arise.*

Monday, January 15	Tuesday, January 16	Wednesday, January 17	Thursday, January 18	Friday, January 19
HOLIDAY	Cadence Academy – Raintree	CN 95 (Parent Meeting; new teacher onboarding)  Crossway	Alliance - McAlpine  Smart Kids 7	Sunshine House (Mentor/Mentee PDP review)

T.