

User Manual: Dashboard & Feature Settings



User Manual for Entry In The Zone and SMC Multi Timeframe

The FABLE Pro Suite can be downloaded from the link below at no cost.

📌 **Download The FABLE Pro Suite here**

📌 https://drive.google.com/drive/folders/1SemBU_bN1N3vmLLmY3Y1ePqG6bKW0pRB

📌 **Read The FABLE Pro Suite Guide & Check Your Current Version**

📌 <https://docs.google.com/document/d/14gU24np-sVnThvWc2LwGkLEKs8pa3J0KMAYnsgUiGU8>

📌 To help you make a confident decision, we encourage you to watch real-world examples of our indicator on our YouTube channel before purchasing.

Join Us Now for Real-Time Forward Testing : [Fable Edge](#)

📌 <https://www.youtube.com/@FableEdge>

⚠️ **Important Warning**

✗ Please do not trust any Telegram groups, Instagram accounts, or other channels claiming to be associated with us that request payments or financial contributions.

TABLE OF CONTENTS

User Manual Introduction (Page).....	(2-4)
<hr/>	
Key Features Dashboard & Chart Elements (Page)	(5-9)
<hr/>	
Showing/Hiding the Control Panel (Page)	(10)
<hr/>	
Analysis Modes - Single Timeframe View - Multi Timeframe View (Page)	(11-13)
<hr/>	
Dashboard Overview (Page).....	(13-15)
<hr/>	
Customizing the Candlestick Colors / Screen Display Adjustment / One-Click Trading (Page).....	(15-18)
<hr/>	
Notifications Setup / Smartphone Notification Settings (Page).....	(19-23)
<hr/>	
Adjusting the SWING Setting to Filter Market Noise (Page)	(24)
<hr/>	
Risk Per Trade Calculator (For Utility Version only) (Page).....	(25-28)
<hr/>	
Frequently Asked Questions (FAQ) / (Page)	(29-30)
<hr/>	
Step-by-step guide for installation, purchase, and version updates	(31-32)
<hr/>	

Entry In The Zone and SMC Multi Timeframe

Core Features

Market Structure Detection The system automatically detects market structure (BOS, CHoCH, mBOS, and mCHoCH) with clear Internal and External Market Structure separation. It also displays Market Structure Labels, including Higher High (HH), Higher Low (HL), Lower High (LH), and Lower Low (LL). The system supports both Single Timeframe Analysis and Multi Timeframe Analysis, providing a clearer overall view of market conditions.

Key Price Zones (Points of Interest) The system identifies various Points of Interest (POI), including Order Blocks, Volumized Order Blocks, Supply & Demand Zones, and Fair Value Gaps (FVG). These zones are calculated directly from market structure conditions and displayed on the chart in real time to support market analysis based on Smart Money Concepts (SMC).

📌 Points of Interest (POI) :

<https://docs.google.com/document/d/1DsWa2YEONaLni8pnjEkMv0O7zM2cf4jME8piKojHlfo>

Fibonacci Levels / Premium & Discount Analysis The system plots Auto Fibonacci Levels to help you clearly define Premium and Discount zones on any timeframe. This makes it easier to identify optimal pullback entry areas and avoid chasing price into unfavorable positions.

📌 Fibonacci Levels / Premium & Discount Analysis :

https://docs.google.com/document/d/1T0ByO4wYs8Tdp7_Z3WjxPevH_30senP0Cbav0TW44hs

All Essential Market Information in One Tool To support complete and efficient analysis, The system consolidates all essential market information into one tool — including Liquidity levels, Equal Highs & Lows, Previous Day High/Low (PDH/PDL), Previous Week High/Low (PWH/PWL), Premium & Discount Zones, Auto Fibonacci, and Trading Sessions. No more switching between multiple indicators or cluttered chart setups.

Real-Time, No-Repaint Signal & Alert System The built-in signal system automatically generates BUY and SELL signals in real time, strictly following a No-Repaint principle signals are only confirmed and displayed once all conditions are fully met. — The system sends alerts when key events occur, such as price entering a POI zone, a reversal signal forming within the zone, or a BOS / CHoCH being detected. All alerts can be delivered directly to your mobile device via Push Notification, so you never miss an important market move.

2-in-1 System: SMC Indicator and Signal Based on Smart Money Concepts (SMC)

Entry In The Zone functions as both a structural analysis indicator and a real-time BUY / SELL signal system — two powerful tools combined into one. You get the full analytical framework to understand the market, alongside actionable signals to act on it. Every component can be customized to match your personal trading style and preferences.

Flexible Trading Applications

The indicator is designed to support a wide range of trading styles and timeframes, allowing you to choose the approach that best fits your trading strategy.

Style	Timeframes	Multi TF Combinations
Scalping	M1, M3, M5	M1–M3, M1–M5, M3–M5
Intraday Trading	M5, M15, M30	M5–M15
Swing Trading	H1, H4, D1	M15–H1

 **Essential foundations of Smart Money Concepts (SMC), systematically organized to help traders learn, understand, and apply SMC more effectively.**

 https://docs.google.com/document/d/1zIU41g5PueYSo1DudkBWYXKbhJmU07qu8tyDAT_i0iE

Our goal is not to predict every market movement, but to help you see the overall market more clearly through a complete and structured analytical framework.

By combining key Smart Money Concepts components, including Market Structure, Liquidity, Order Blocks, Supply & Demand Zones, Fair Value Gaps, and other essential tools into a single system, you can better understand market context, develop more structured trading plans, and make trading decisions with greater confidence.

This system is designed to support analysis and decision-making by focusing on providing clarity, understanding, and a more comprehensive view of market conditions, helping you adapt and respond to changing market environments more effectively.

In addition, you can further enhance your analytical performance with **The FABLE Pro Suite**, which includes:

- Multi Trendlines – Breakout Signal Alerts
- Smart Strength
- Price Action Radar
- Adaptive RSI Filter
- Volume Profile
- Adapt Nadaraya MTF
- Bar Count Down

These tools are designed to work alongside the main indicator to provide additional analytical perspectives, confirm signals, and support more effective trading decisions.

In the future, we will continue to enhance and develop **Entry In The Zone and SMC Multi Timeframe** to provide an even clearer view of overall market conditions.

All chart components can be individually enabled or disabled, allowing you to customize the chart according to your trading needs.

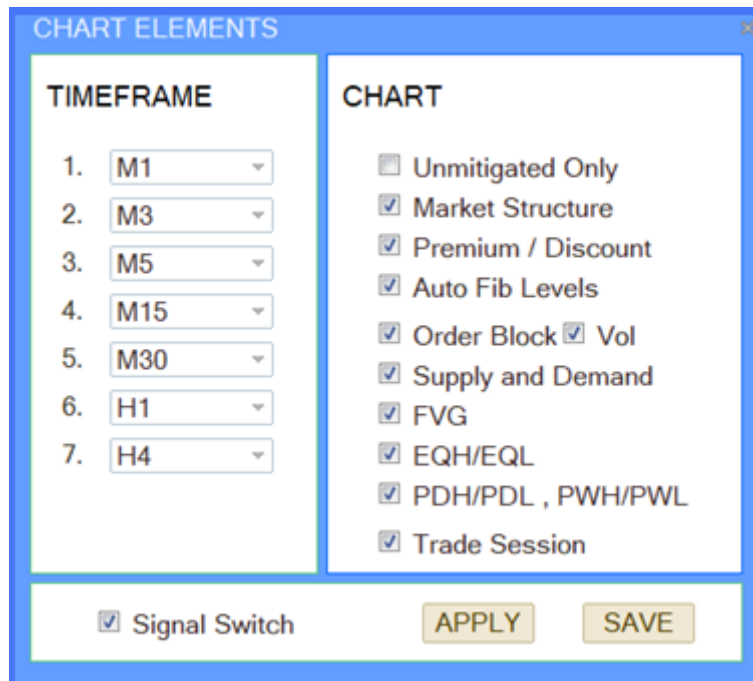


CHART ELEMENTS

User Guide for Dashboard and Feature Settings

1. TIME FRAME

Select the timeframe you want to display on the dashboard and receive real-time alerts when the price touches important zones.

You just need to set the Time Frame you are interested in using on the dashboard only the first time.

2. CHART

Customize the chart appearance to fit your trading style with the following options:

2.1 Unmitigated

Enabled: Displays only zones that have not been used (Unmitigated Zones).

Disabled: Displays all zones, both mitigated and unmitigated.

2.2 Market Structure

Enable or disable the display of Market Structure.

- **Major Trend** refers to the primary direction or overall movement of the market over a certain period. It represents a long-term price movement that indicates the general direction of the market.
 - **Minor Trend** refers to a short-term price movement or secondary trend that occurs within the framework of a Major Trend. It represents temporary fluctuations that happen over a shorter period while still following the overall direction of the major trend.
-

2.3 Premium / Discount

Enable or disable the display of **Premium and Discount zones**.

Using Premium / Discount in Trading Decisions

In an uptrend: Look for opportunities to enter the Discount Zone for buying.

In a downtrend: Look for opportunities to enter the Premium Zone for selling.

2.4 Auto Fib Levels

Enable or disable the display of **automatic Fibonacci Levels**.

Auto Fib Level Identify Pullbacks and Reversals with Automatically Drawn Fibonacci Levels

2.5 Order Block (OB)

Enable or disable the display of Order Blocks.

📌 **New Feature : Volumized Order Blocks (VOB)**

https://docs.google.com/document/d/1n9G_8MucTQmBrq8tKbhZT9hTyJ9UX9dO9cW-izLYdzo

2.6 Supply and Demand (Sz / Dz)

Enable or disable the display of Supply and Demand zones.

2.7 FVG (Fair Value Gap)

Enable or disable the display of Fair Value Gaps.

2.8 EQH / EQL (Equal Highs / Equal Lows)

Enable or disable the display of Equal Highs and Equal Lows.

Equal Highs / Equal Lows Price levels where the market has repeatedly reacted — common areas where retail traders place stop losses.

2.9 PDH / PDL / PWH / PWL

Enable or disable the display of Previous Day High/Low and Previous Week High/Low levels.

PDH / PDL (Previous Day High/Low) The previous day's high and low — often targeted by Smart Money to trigger stop hunts and mislead retail traders.

PWH / PWL (Previous Week High/Low) The previous week's high and low — key zones where large clusters of stop orders are often found, making them primary targets for institutional sweeps.

2.10 Trading Session

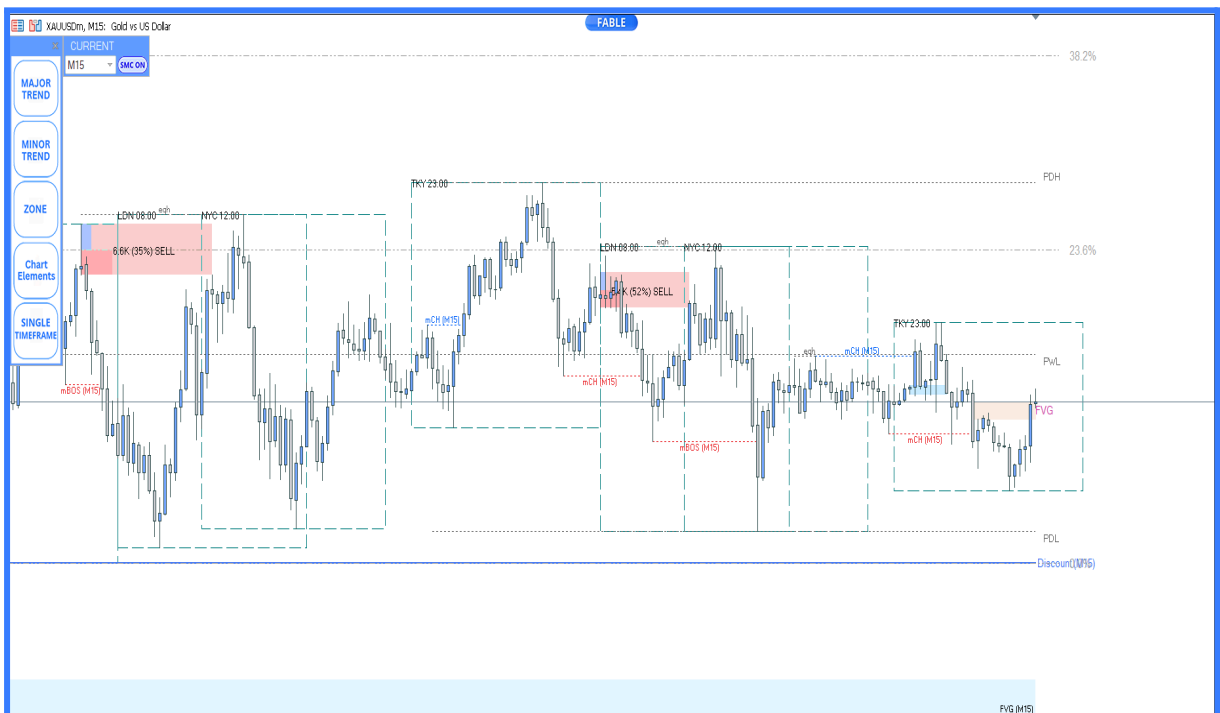
Enable or disable the display of major trading sessions (**Tokyo, London, New York**).

Trading sessions are extremely important in financial market trading because they affect several key factors that traders must consider, such as impacts on liquidity and volatility, economic news, and selecting the appropriate instruments for trading.



How to Set Up Trading Sessions Using "Display as Price Boxes"

<https://youtu.be/U5JrHkCT7vU>



3. Signal Switch

Enable or disable the display of trade signals.

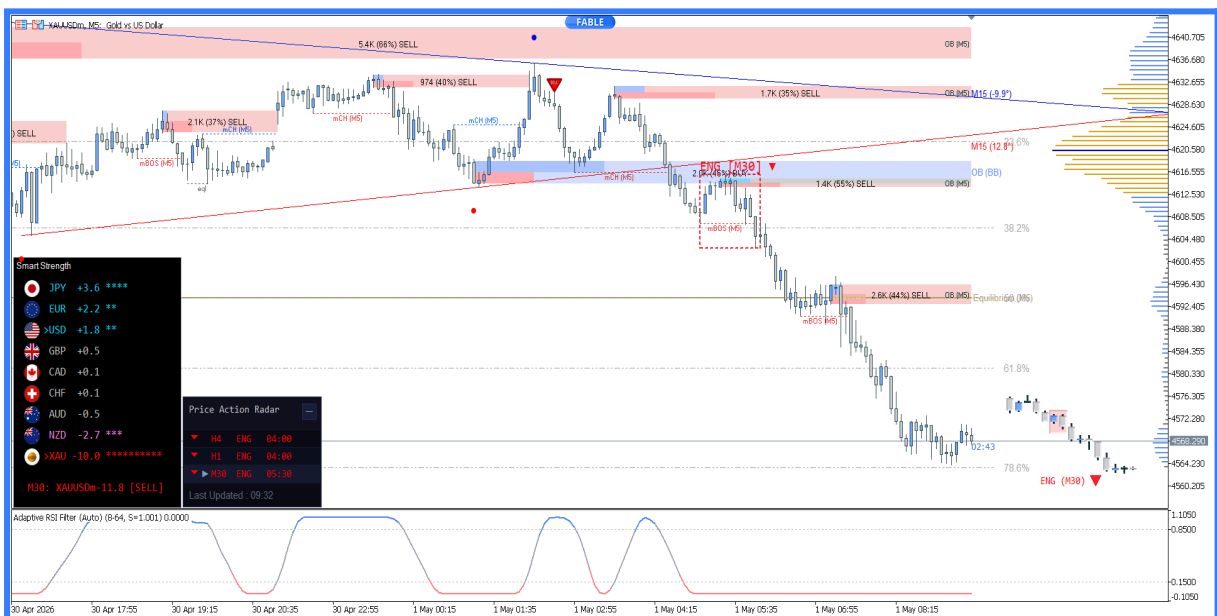


The system focuses on filtering out false signals and avoiding those that occur during unclear sideways market conditions, in order to reduce risk and improve the accuracy of trade entries.

! For your safety, we recommend avoiding trading against the trend. If the **MAJOR TREND** dashboard shows the same direction across multiple timeframes, look for entry signals in the same direction as the MAJOR TREND dashboard for the best trading opportunities.

Showing/Hiding the Control Panel

You can Show/Hide the control dialog by clicking on the **FABLE** Logo.



The system can display in two different views.

Single Timeframe View

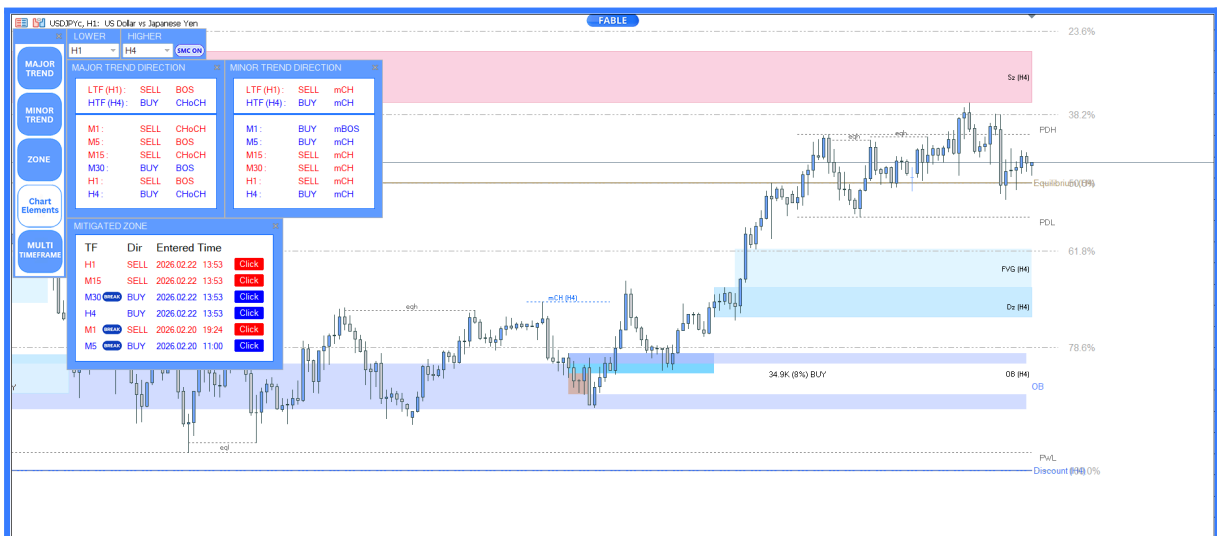
The system displays the Market Structure and zones based on the current timeframe. All trade signals are calculated using the current timeframe.



Multi Timeframe View

The system displays the Market Structure and zones from higher time-frames, while trade signals are calculated using lower timeframes.

Recommended Multi-Timeframe Combinations: H1 / M5, M15 and H4 / M15 (Use H1 or H4 as the higher timeframe for context, and M5 or M15 as the lower timeframe for entry signals.)



Single Timeframe Analysis

Single Timeframe Analysis is a market analysis method that uses only one timeframe to observe price and trend of an asset. This means traders consider all information—such as the main trend, entry and exit points, and trade signals—within a single time frame only.

Key Principles

- Choose the appropriate time frame

Traders should select a timeframe that fits their trading style, for example, H4 , Daily timeframe for medium to long-term trading, or 15-minute (15M) 5-minute (5M) timeframe for short-term trading.

- Analyze the trend within that time frame

Use that single timeframe to identify price direction such as bullish or bearish trends, and look for trade signals like candlestick patterns, chart formations, or indicators.

- Determine entry and exit points

Decide where to enter and exit trades, including setting Stop-Loss and Take-Profit levels within the same timeframe, to control risk and manage trades effectively.

Multi-Timeframe Analysis

Multi-Timeframe Analysis is a market analysis technique that combines multiple timeframes to get a clear overall picture of the main trend and find more precise entry and exit points. It enhances trading effectiveness by observing the big-picture trend from higher time frames while identifying trading opportunities in smaller time frames, helping to reduce risk and increase profit potential.

Key Principles

- Analyze the main trend from a higher timeframe

For example, 4-hour (4H) or daily (Daily) charts to determine the primary market direction (uptrend, downtrend, or sideways).

- Find entry and exit points from a lower timeframe

For example, 1-hour (1H) or 15-minute (15M) charts to locate appropriate trading opportunities in line with the main trend.

- Confirm signals across multiple timeframes

Signals on lower time frames should align with the trend from the higher timeframe to increase confidence.

Dashboard Overview

The system allows you to hide or show all elements with a single click.

The SMC **ON/OFF** button toggles the entire indicator's display on or off.



Dashboard Overview

The dashboard consists of three main sections:

Major Trend Direction

Displays the direction of the major trend.

The system reflects this based on the selected configuration settings.

Minor Trend Direction

Displays the direction of the minor (short-term) trend.

The system reflects this based on the selected configuration settings.

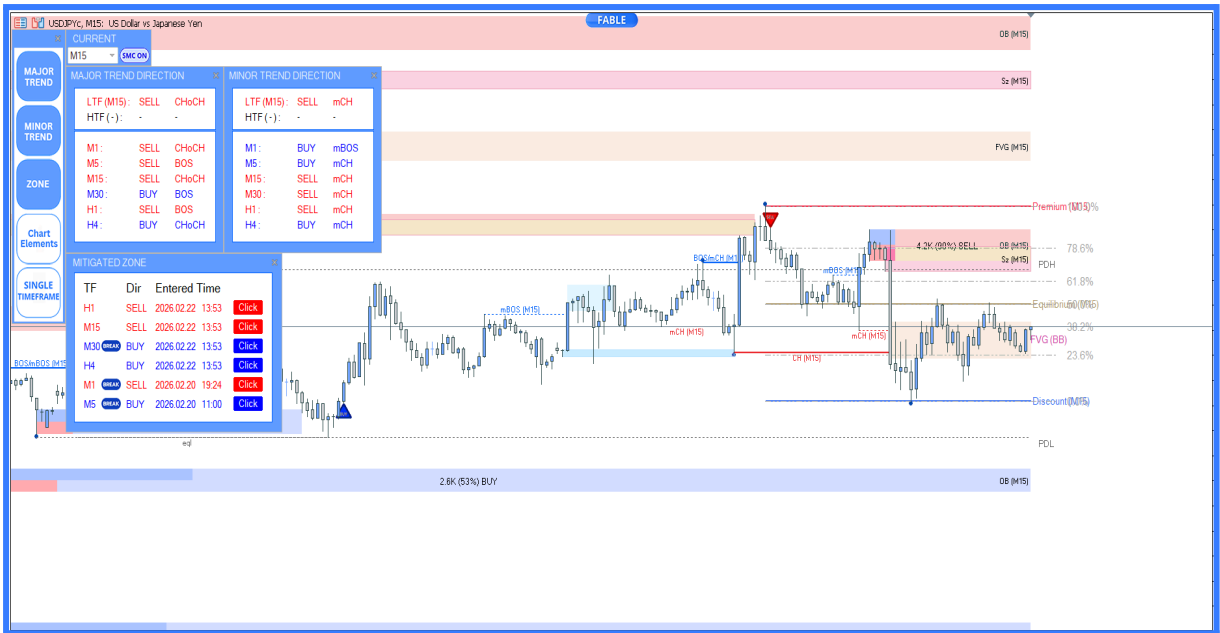
Mitigated Zone

This section displays zones that are currently being utilized when the price touches key areas across multiple timeframes.

The most recent event appears at the top of the list. You can switch between timeframes by clicking the Click button.

The image shows three dashboard panels. The top-left panel, 'MAJOR TREND DIRECTION', shows LTF (M15) as SELL with CHoCH and HTF (-) as -. Below this is a list of timeframes: M1 (SELL, CHoCH), M5 (SELL, BOS), M15 (SELL, CHoCH), M30 (BUY, BOS), H1 (SELL, BOS), and H4 (BUY, CHoCH). The top-right panel, 'MINOR TREND DIRECTION', shows LTF (M15) as SELL with mCH and HTF (-) as -. Below this is a list of timeframes: M1 (BUY, mBOS), M5 (BUY, mCH), M15 (SELL, mCH), M30 (SELL, mCH), H1 (SELL, mCH), and H4 (BUY, mCH). The bottom panel, 'MITIGATED ZONE', is a table with columns for TF, Dir, and Entered Time. It lists six entries with 'Click' buttons for each.

TF	Dir	Entered Time	Action
H1	SELL	2026.02.22 13:53	Click
M15	SELL	2026.02.22 13:53	Click
M30 <small>BREAK</small>	BUY	2026.02.22 13:53	Click
H4	BUY	2026.02.22 13:53	Click
M1 <small>BREAK</small>	SELL	2026.02.20 19:24	Click
M5 <small>BREAK</small>	BUY	2026.02.20 11:00	Click

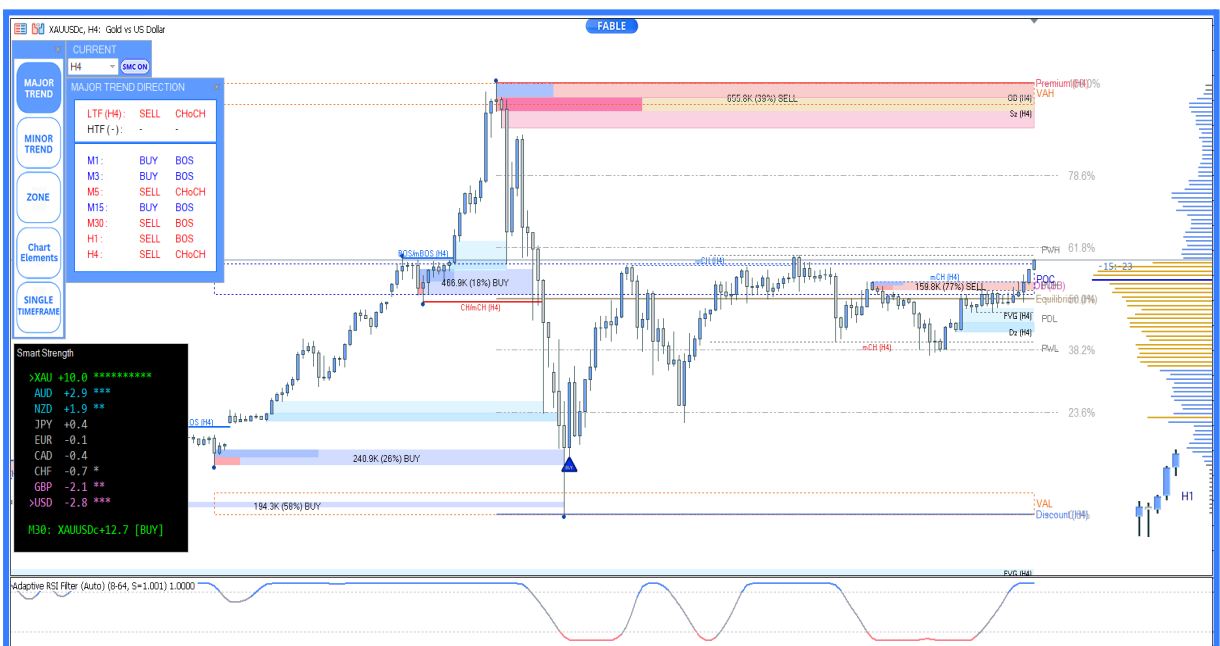


You can customize the screen colors, various zones, and candlesticks to match your trading style according to your preferences.

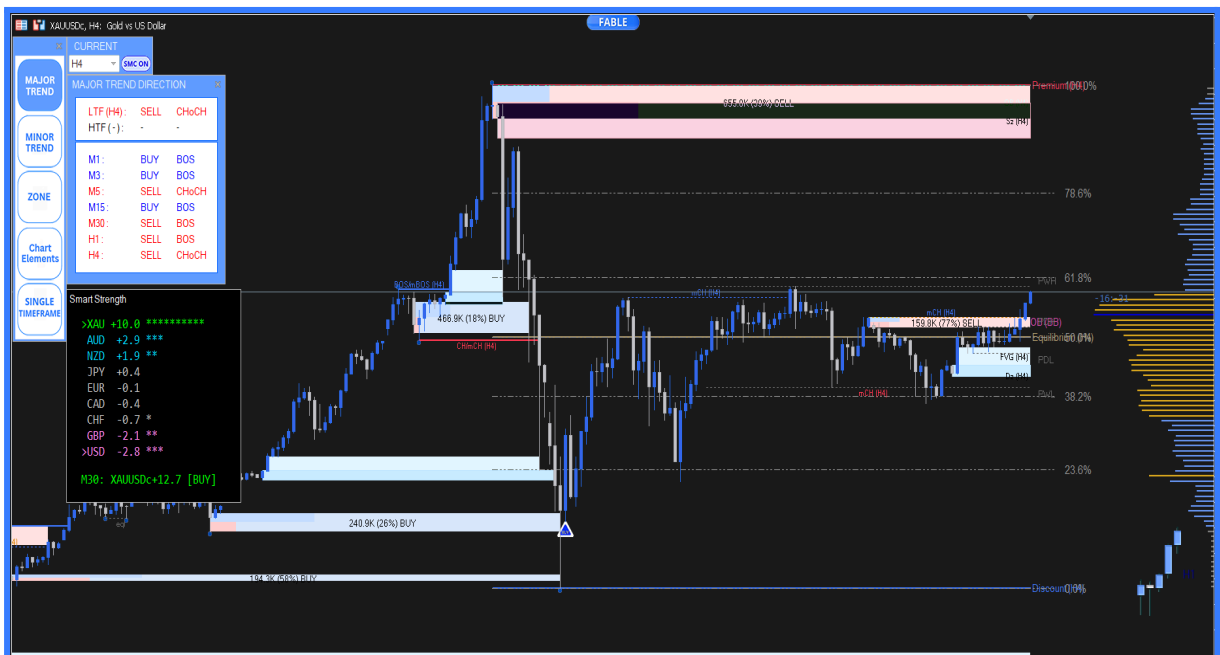
User Theme: Choose Your Display Color Theme

Options include:

- Light Mode



- Dark Mode



- Custom Mode

How to Use Custom Mode

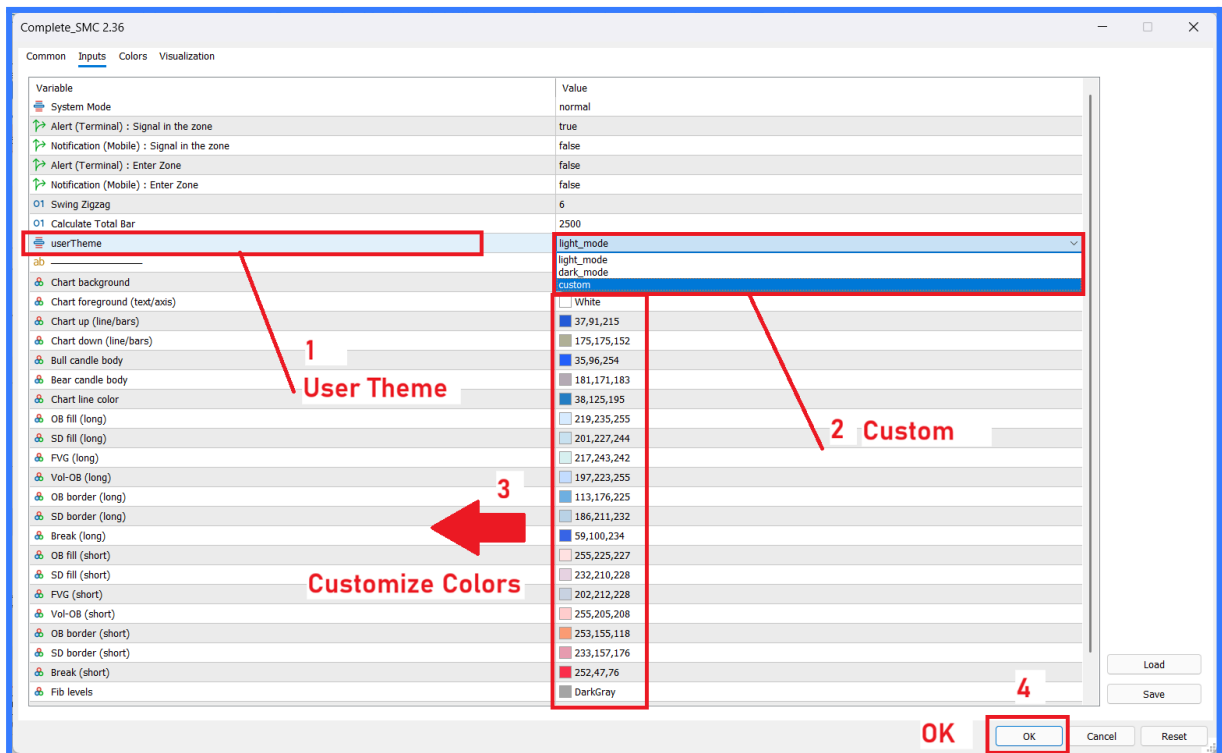
1. Select User Theme
 - Go to the Inputs menu
 - Locate the userTheme option

2. Switch to Custom Mode
 - Click on the Value field of userTheme
 - Select custom
 - This mode allows you to fully customize the colors of all elements

3. Customize Colors
 - Once Custom mode is selected
 - You can adjust the colors of various elements, such as:
 - Chart background
 - Other chart components listed in the settings
 - Click on each color field to choose colors that match your trading style

4. Save the Settings

- After finishing your customization
- Click OK at the bottom to confirm and apply the settings immediately

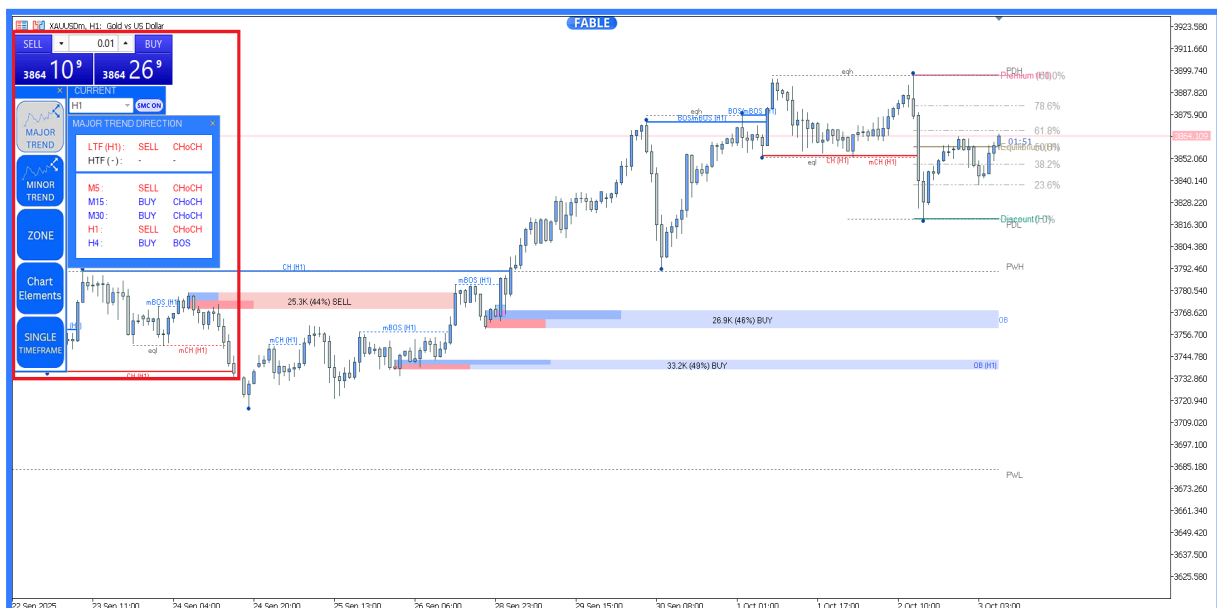


Screen Display Adjustment (Small / Large / Auto Mode)

- Small Screen
- Large Screen
- Automatic Detection



How to set up One-Click Trading so that it doesn't overlap the dashboard : <https://www.youtube.com/watch?v=VdOWF6UUPAK>



How to Set Up Buy/Sell Signal Notifications on Your Smartphone



Steps to Set Up Notifications from MT5 to Your Mobile Device

1. Open MT5 on your computer (PC)

- Go to the Tools menu > select Options
- Go to the "Notifications" tab
- Check the box for "Enable Push Notifications"

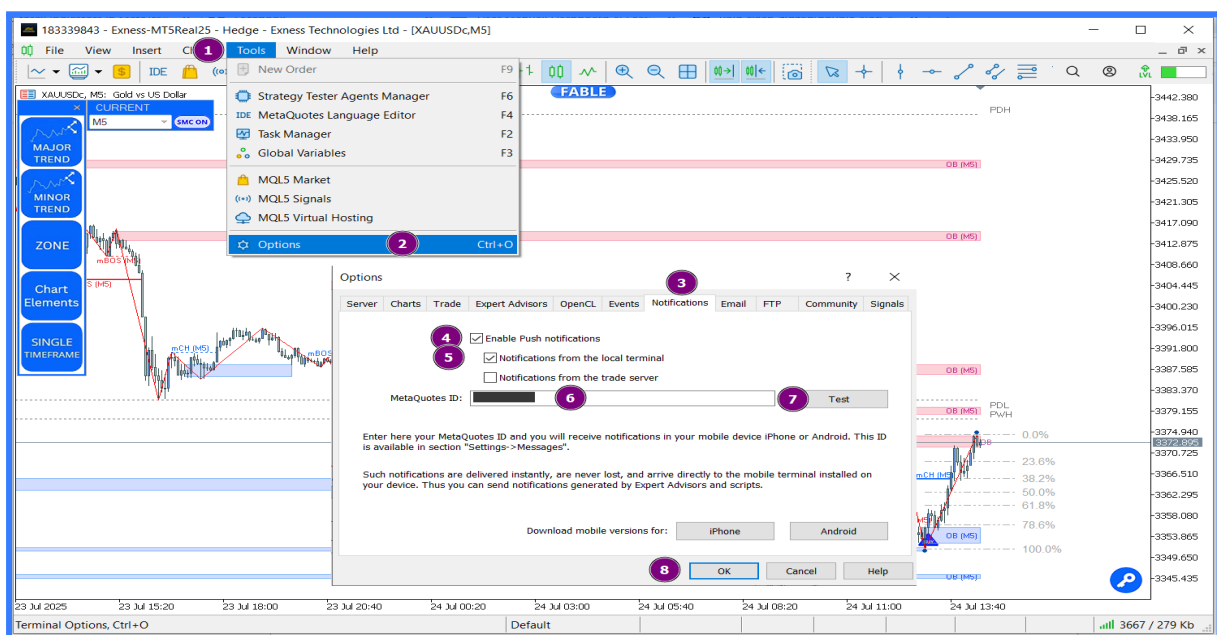
Enter your MetaQuotes ID from the MT5 mobile app (see how to find it in the next step)

2. Find your MetaQuotes ID on your mobile

- Open the MetaTrader 5 app on your smartphone
- Go to Settings > scroll down to find your MetaQuotes ID
- Copy the MetaQuotes ID and paste it into the field in MT5 on your PC

3. Click "Test" to test the notification

- If everything is set up correctly, a test notification will be sent to your mobile device immediately



Enable notifications in the indicator

Go back to the chart where the indicator is applied

Open the indicator settings

Set "Send Notifications" or "Alert" to **True**

Common Inputs Colors Visualization

Variable	Value
System Mode	normal
Alert (Terminal) : Signal in the zone	true
Notification (Mobile) : Signal in the zone	true
Alert (Terminal) : Enter Zone	false
Notification (Mobile) : Enter Zone	false
Swing Zigzag	6
Calculate Total Bar	2500
userTheme	light_mode
ab -----	----- Custom Color Settings -----
Chart background	24,25,24
Chart foreground (text/axis)	White
Chart up (line/bars)	37,91,215
Chart down (line/bars)	175,175,152
Bull candle body	35,96,254
Bear candle body	181,171,183
Chart line color	38,125,195
OB fill (long)	219,235,255
SD fill (long)	201,227,244
FVG (long)	217,243,242
Vol-OB (long)	197,223,255
OB border (long)	113,176,225
SD border (long)	186,211,232
Break (long)	59,100,234
OB fill (short)	255,225,227
SD fill (short)	232,210,228
FVG (short)	202,212,228
Vol-OB (short)	255,205,208
OB border (short)	253,155,118
SD border (short)	233,157,176
Break (short)	252,47,76
Fib levels	DarkGray

Alert Terminal Setting & Notification Mobile Setting

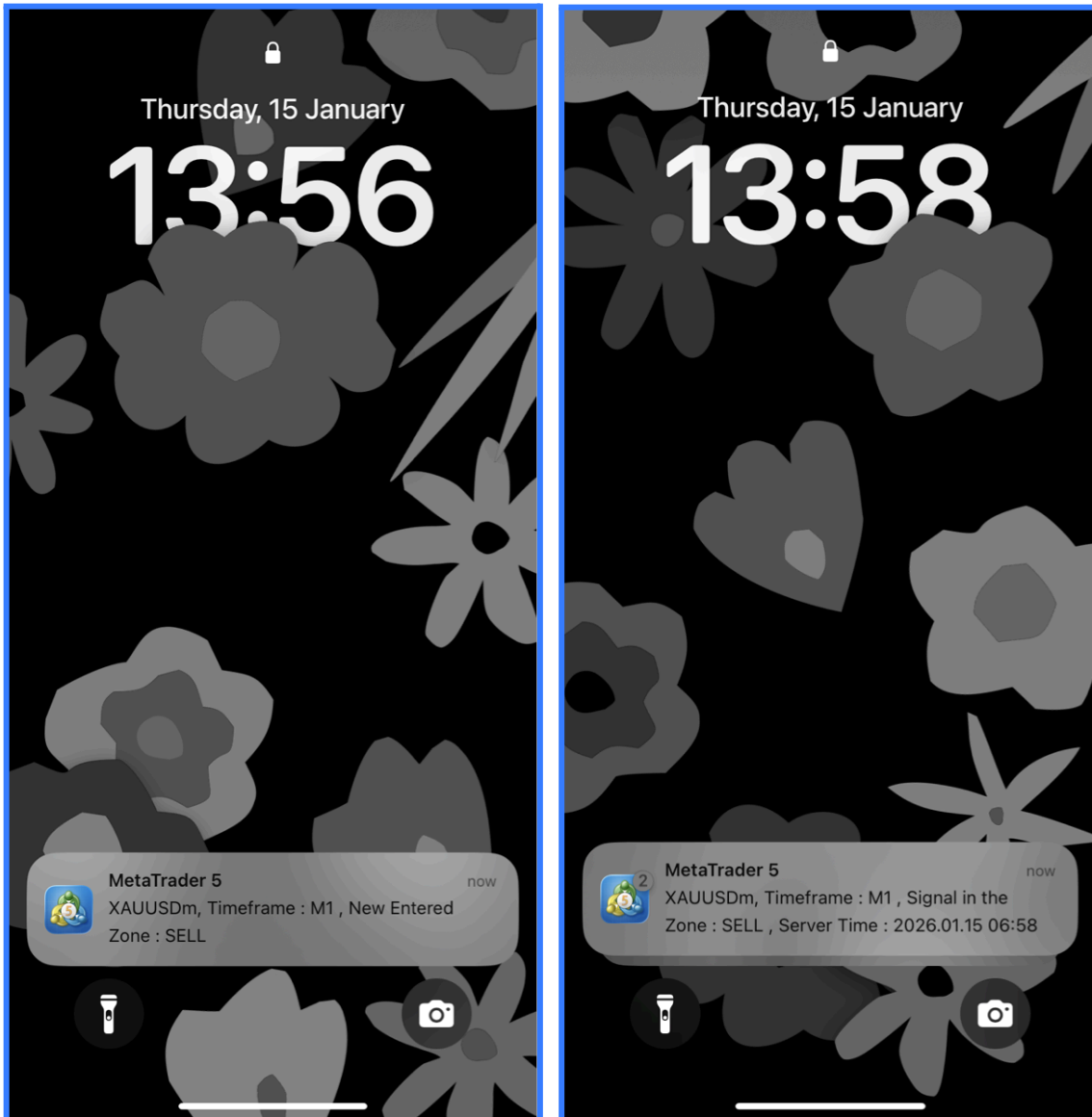
Load Save

OK Cancel Reset

Mobile Alert Examples – Entry In The Zone & SMC Multi Timeframe

🔔 Signal Notification (Mobile) : <https://youtu.be/-k0UgobKiMY>

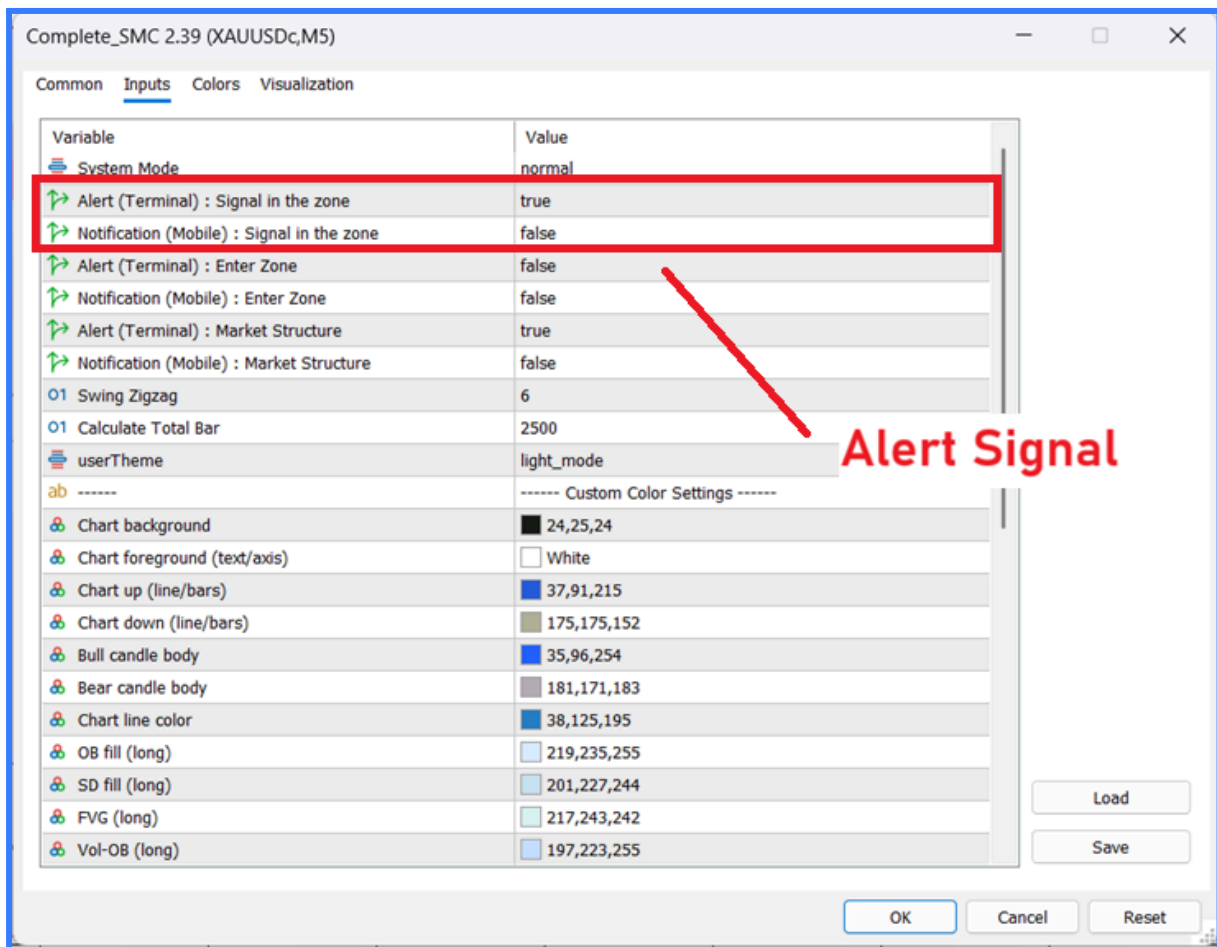
🔔 Enter Zone Notification (Mobile) : <https://youtu.be/2TJZ2ofTpsA>



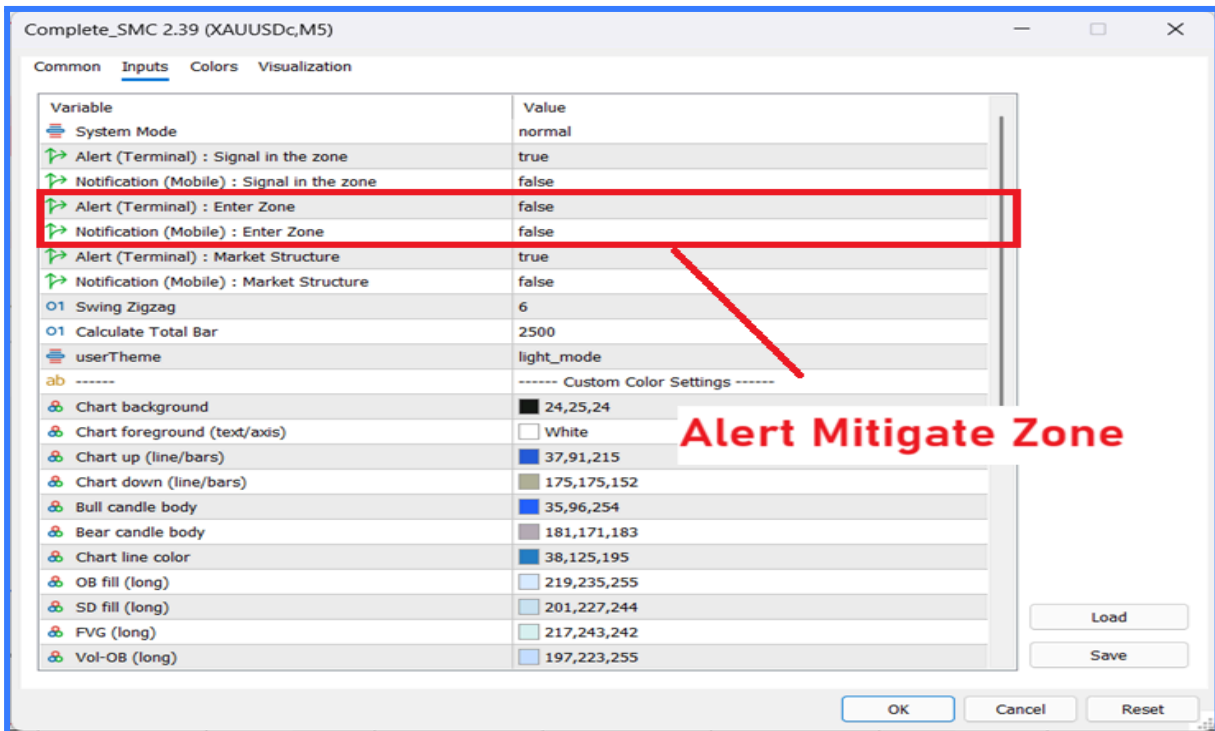
You can configure the Alert and Notification settings in three categories:

- Alert Signal
- Alert Mitigation Zone
- Market Structure Change Alert (BOS and CHoCH)

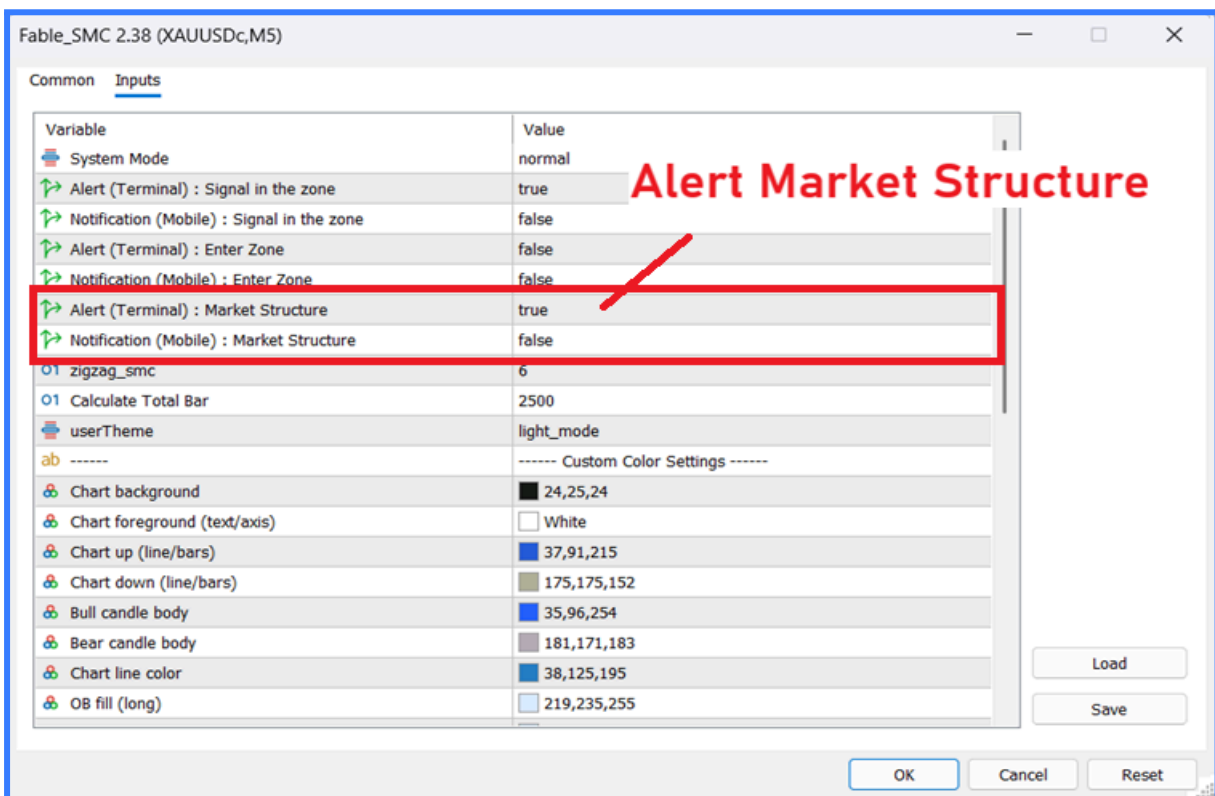
- Alert Signal



- Alert Mitigate Zone



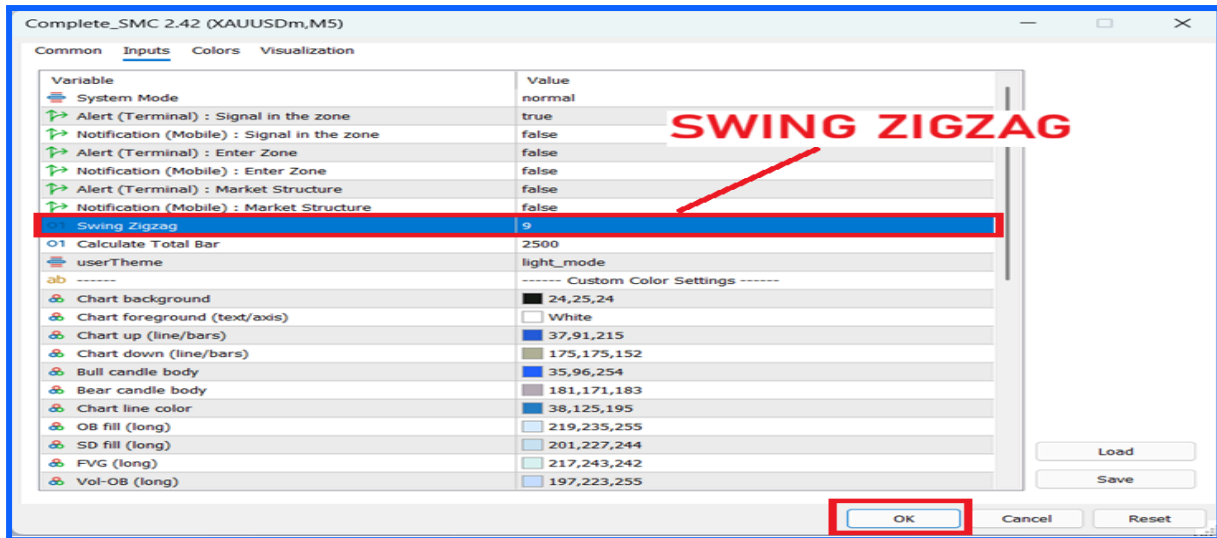
- Market Structure Change Alert (BOS and CHoCH)



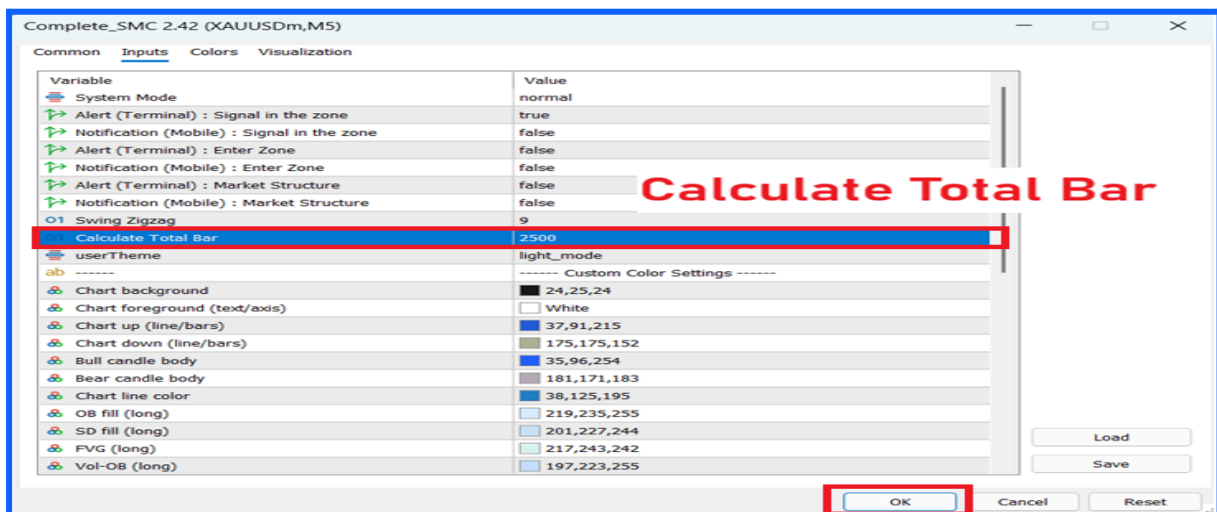
You can adjust the SWING ZIGZAG setting to find the value that best suits the instrument and your trading style. In general, a higher SWING value provides a more stable and reliable structure, helping to filter out market noise.

I recommend using a range of 6–12 for a balanced approach.

For XAUUSD, I recommend testing with a SWING ZIGZAG setting of 9, or using the default value of 6. If you don't like it, don't forget to switch it back to the default setting (value 6).



Improve your trading accuracy through backtesting by adjusting the Swing setting to suit each asset. Adjusting the Swing value to match the specific characteristics of each currency pair or asset helps you develop more precise strategies and analyze results more effectively.

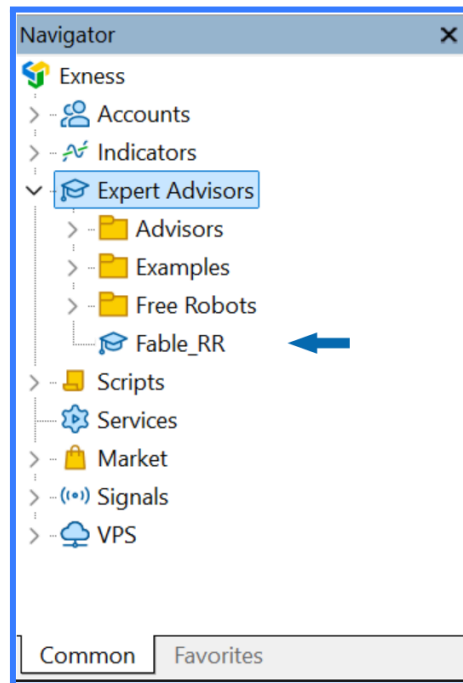


During backtesting, you can adjust the “Calculate Total Bar” setting to control the number of candles displayed. After completing your backtesting, please remember to revert the candle display settings to avoid overloading the program.

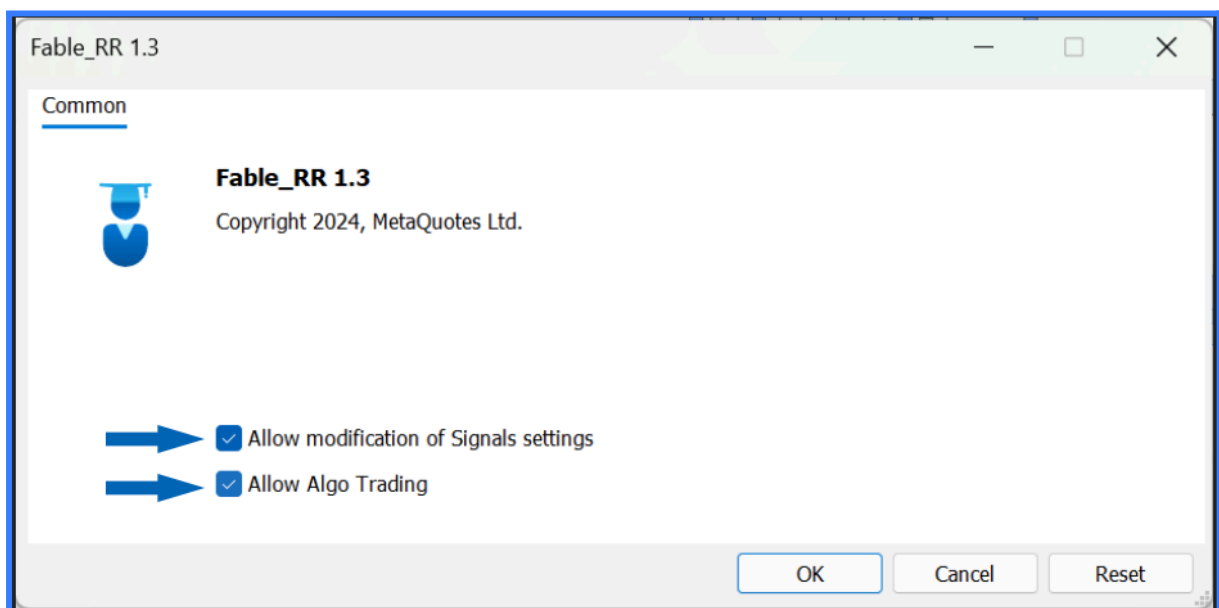
For the Risk Per Trade Calculator Feature (For Utility Version only)

Installation and User Guide

1. Double-click to install on the chart.



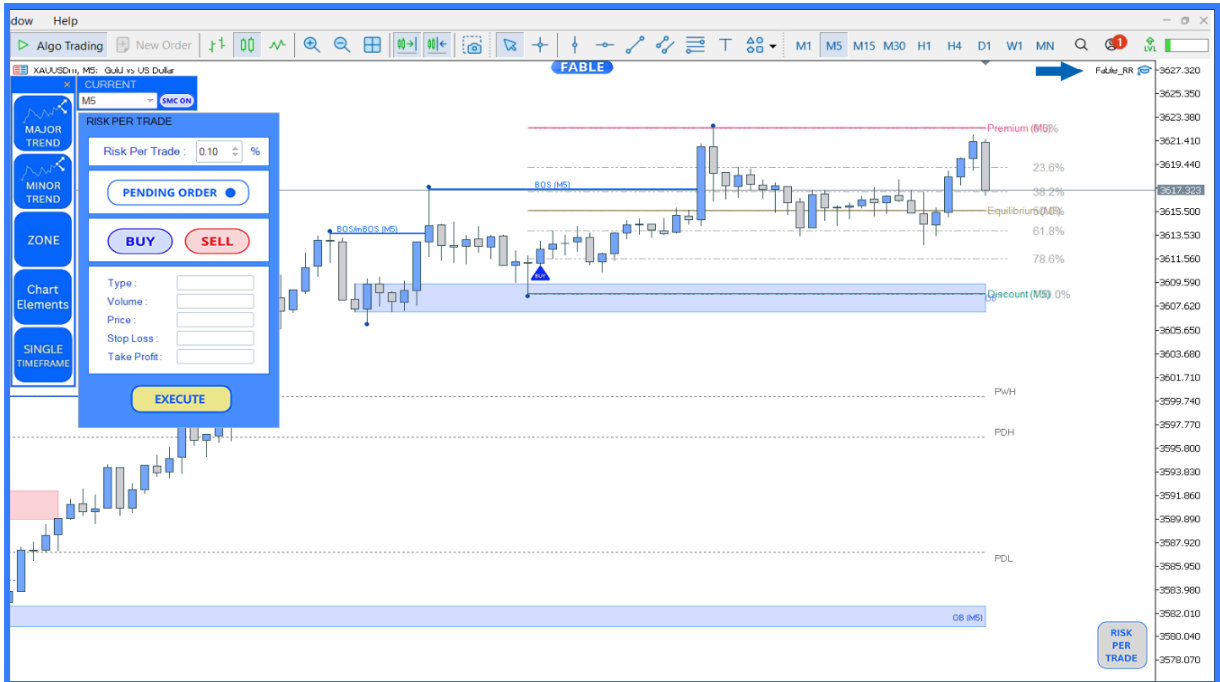
2. Check the box
 - 2.1. Allow modification of Signal settings
 - 2.2. Allow Algo Trading



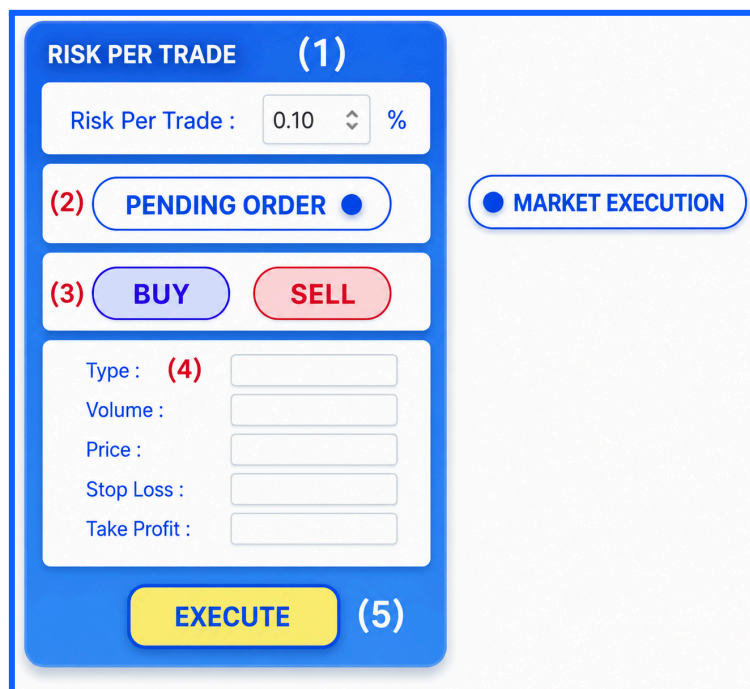
3. Press the Algo Trading button.



4. The program is ready to operate. The Fable_RR icon at the top-right will turn blue.



User Guide for the Risk Per Trade Program (For Utility Version only)



1. Enter the percentage of your acceptable loss (Risk).

2. Order Types

2.1 Pending Order : Examples: Buy Limit, Sell Limit, Buy Stop, Sell Stop

2.2 Market Execution : The opening price will be at the current market price.
The system will automatically determine whether it is a Limit or Stop order.

3. Order Type: Buy or Sell

4. Order Details include:

Type

Volume

Price

Stop Loss

Take Profit

5. Press the Execute button to place the order.

Risk management made simple with the built-in Risk Per Trade Calculator.

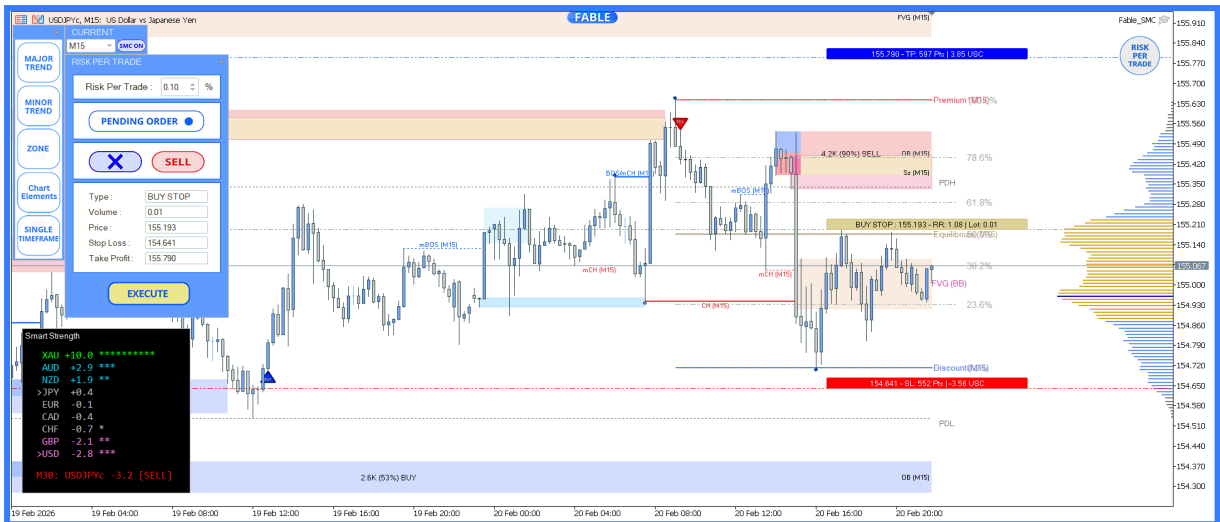
The system automatically calculates the appropriate lot size based on your selected Stop Loss level and risk percentage — while assigning the correct order type accordingly.

Simply drag to your desired price level and the system will automatically select Type: AUTO.

It analyzes the current price position and classifies the order as Stop or Limit under the appropriate conditions.

Fewer steps. Reduced errors. Greater execution precision.

 [If the Trader Assistant does not open orders, what should I do? The solution is explained in FAQ No. 1.](#)



Gold Box: Represents the opening price line. Displays Order Type, Price, Risk-Reward (RR), and Lot size.

Blue Box: Represents the Take Profit price line. Displays Price, Number of Points, and the expected profit amount.

Red Box: Represents the Stop Loss price line. Displays Price, Number of Points, and the amount of money at risk.

📌 Benefits of Using Risk Per Trade

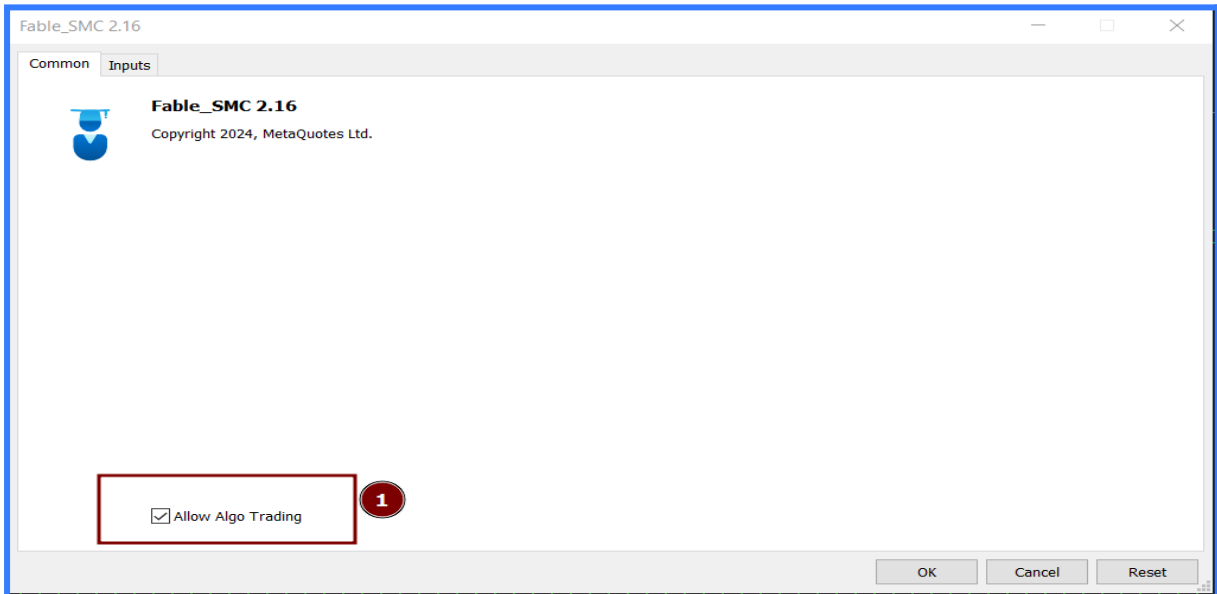
<https://docs.google.com/document/d/1PYF0YnFn2DnDF8fwFQsSX3f3KOp-rbqy-OST8mcFYus>

FAQ

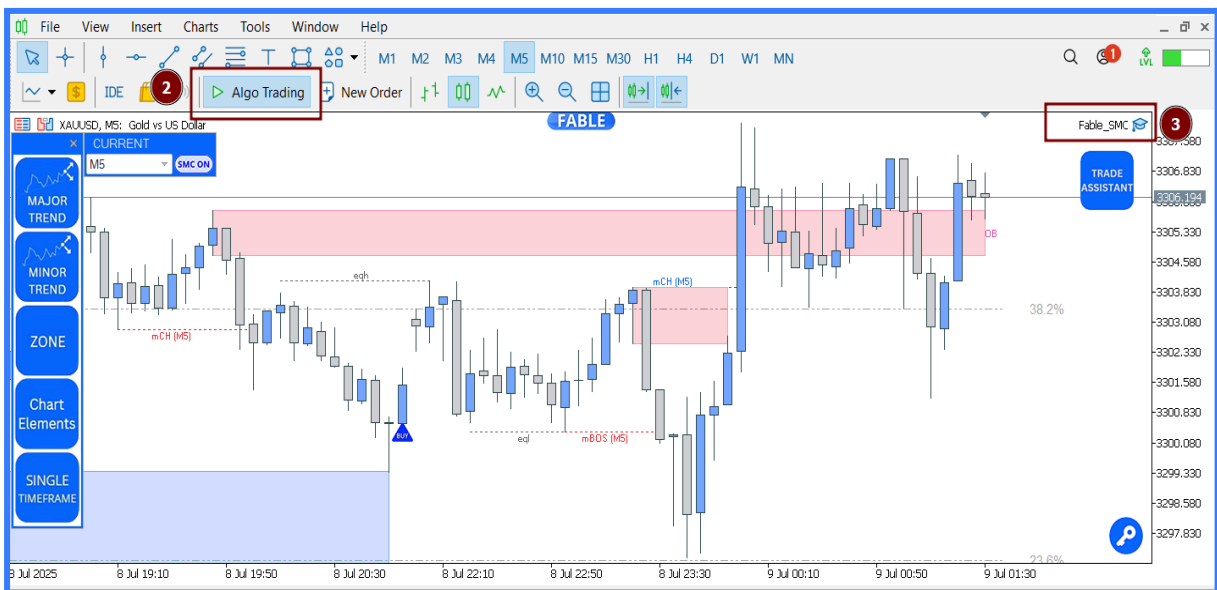
Q1: What should I do if the Trader Assistant is not opening orders? (Utility Version)

Solution:

1. In the Expert Properties section, please make sure that "Allow Algo Trading" is selected.

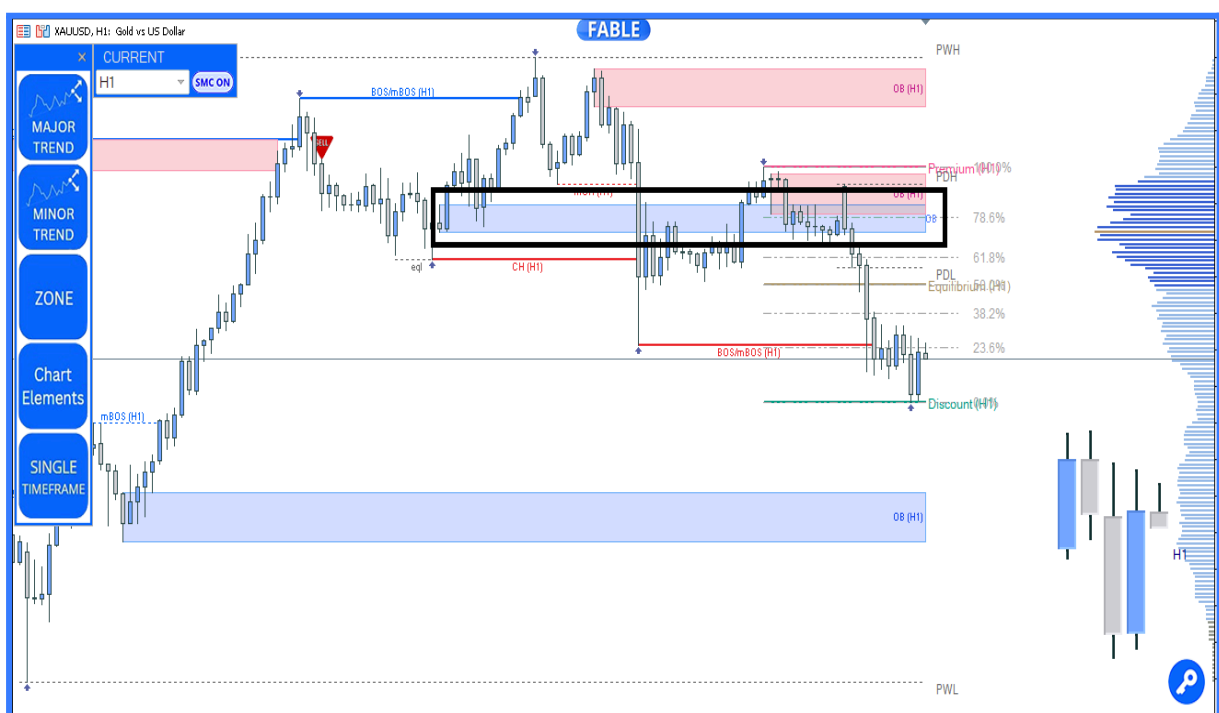


2. Make sure the Algo Trading button is green.
3. If it's set up correctly, the Expert Advisor will show a blue hat icon.



Q2: Why does the system still display Order Blocks that have been rejected by price a long time ago?

The reason the system continues to display those Order Blocks is because price hasn't yet reached the next zone. Even if price has moved through a zone, that zone can still be important — it may act as a **breaker block (BB)** in the future, similar to how support can turn into resistance and vice versa. So we intentionally keep those blocks visible to help traders identify potential reversal or continuation areas.



Q3: Why does the latest zone keep flashing (blinking)?

Because the system continuously recalculates to ensure the most accurate and valid zone based on our conditions.

Step-by-step guide for installation, purchase, and version updates

1. How to purchase indicators from the MetaTrader Market and to install it?

- [How to purchase a trading robot from the MetaTrader Market and to install it?](#)
- [VIDEO How to purchase a trading robot from the MetaTrader Market and to install it?](#)

2. How do I install an indicator on MT5 for the first time or on multiple terminals?

- Please follow these steps to install the product: Open your MetaTrader terminal.
- Specify your MQL5.community account credentials (LOGIN) in the settings: menu "Tools" → "Options" → "Community".
- Go to the Navigator\Market\My Purchases.
- Click "Install" button located to the right of the product name.

Please follow these steps to install the product:

- Open your MetaTrader terminal.
- Specify your MQL5.community account credentials (LOGIN) in the settings: menu "Tools" → "Options" → "Community".
- Go to the Navigator\Market\My Purchases.
- Click "Install" button located to the right of the product name.

Best regards,
MQL5.com Support Team

3. What are the steps for customers to update the program to the latest version?

Terminal's showcase updating once in 24 hours. If they don't see any updates - that means 24 hours haven't passed yet. They have to wait for a showcase update.

If a new version of a product is available, they will see the corresponding message against it as well as the "Update" button (or the "Update demo" button for demo version of paid products).

Once this button is pressed, the new version will be downloaded. The new file replaces the previous one. Thus if they need, they can save the old version of the file under a different name or outside of the directory [platform data folder]\MQL5\Market\.

To install the updated version and immediately delete the product from the Navigator window, they have to restart the terminal and try to install the purchase from the Terminal - Market - Purchased tab.

Terminal's showcase updating once in 24 hours. If they don't see any updates - that means 24 hours haven't passed yet. They have to wait for showcase update.

If a new version of a product is available, they will see the corresponding message against it as well as the "Update" button (or the "Update demo" button for demo version of paid products).

Once this button is pressed, the new version will be downloaded. The new file replaces the previous one. Thus if they need, they can save the old version of the file under a different name or outside of the directory [platform data folder]\MQL5\Market\.

To install updated version immediately delete product from Navigator window, they have to restart the terminal and try to install purchase from Terminal - Market - Purchased tab.

Best regards, MQL5.com Support team

The price of USD 79 (current price) covers the right to use the indicator, includes all indicator updates, and provides lifetime access to the The FABLE Pro Suite indicator set . (10 Activations)

📌 Thank you very much for your interest and support. I truly appreciate it. I hope you enjoy using the Entry In The Zone and SMC Multi Timeframe indicators, as well as The FABLE Pro Suite.

How to Download the Free Demo Version

How to Download the Free Demo Version and Test the Performance of the “Entry In The Zone and SMC Multi Timeframe” Indicator

Market / MetaTrader 5 / Indicators / Entry In The Zone and SMC Multi Timeframe 49 purchases per month

Overview Reviews (50) Comments (179) What's new Statistics

Entry In The Zone and SMC Multi Timeframe ★★★★★ 4.93

Indicators Sirikorn Rungsang Version: 2.42 Updated: 18 March 2026 Activations: 10

Entry In The Zone and SMC Multi Timeframe is a real-time market analysis tool developed based on Smart Money Concepts (SMC). It is designed to analyze market structure, price direction, reversal points, and key zones across multiple timeframes in a systematic way. The system displays Points of Interest (POI) and real-time No Repaint signals, with instant alerts when price reaches key zones or when signals occur within those zones. It functions as both an Indicator and a Signal System (2-in-1), combining zone analysis and real-time signal generation in a single tool, and supports full customization to suit individual trading styles.

The FABLE Pro Suite is a thoughtfully curated set of complementary indicators that you can choose to use as needed. It is available free of charge.

Included Indicators 1. Power of Higher Timeframe 2. Bar Count Down 3. Adapt Nadaraya.MTF 4. Adaptive RSI Filter 5. Volume Profile 6. Smart Strength (New)* 7. Price Action Radar (Now available for download.)* (New)*

When you purchase the Entry In The Zone and SMC Multi-Timeframe indicator, you will receive The FABLE Pro Suite at no additional cost.

Buy: 79 USD

Rent:

For 3 months: 39 USD

For 1 year: 59 USD
You save 63%

Free Demo

Demo downloaded: 5 000

INDICATOR

SMC Entry in the ZONE LIVE SIGNALS 24 HR.

The FABLE Pro Suite

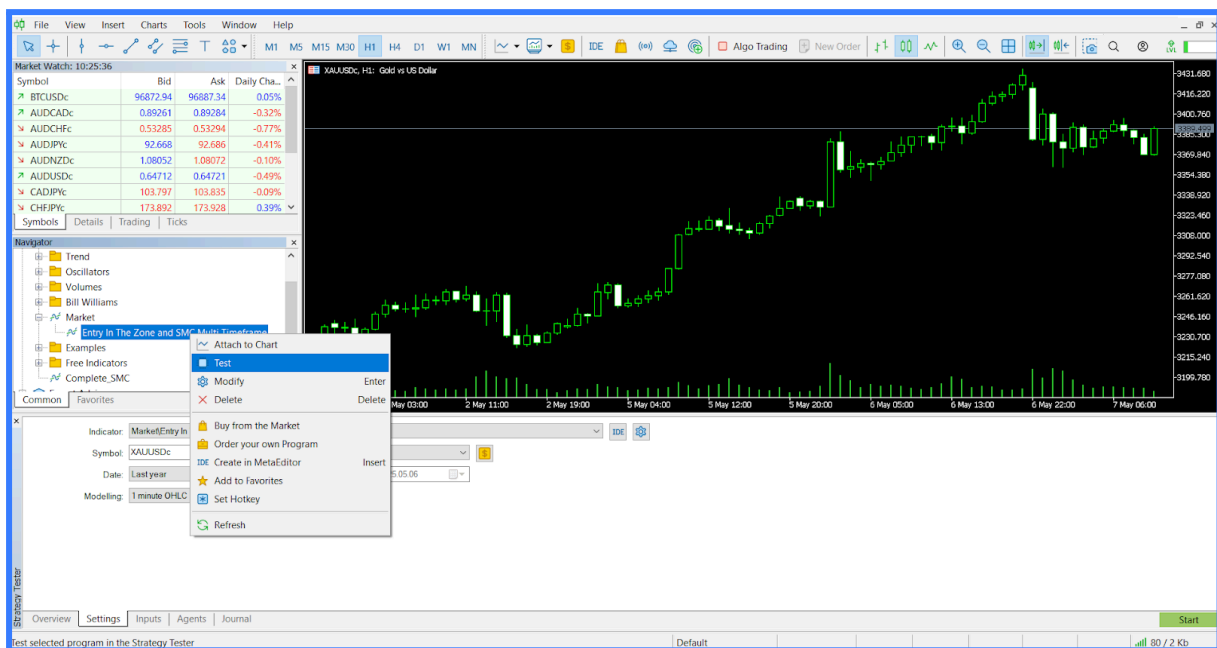
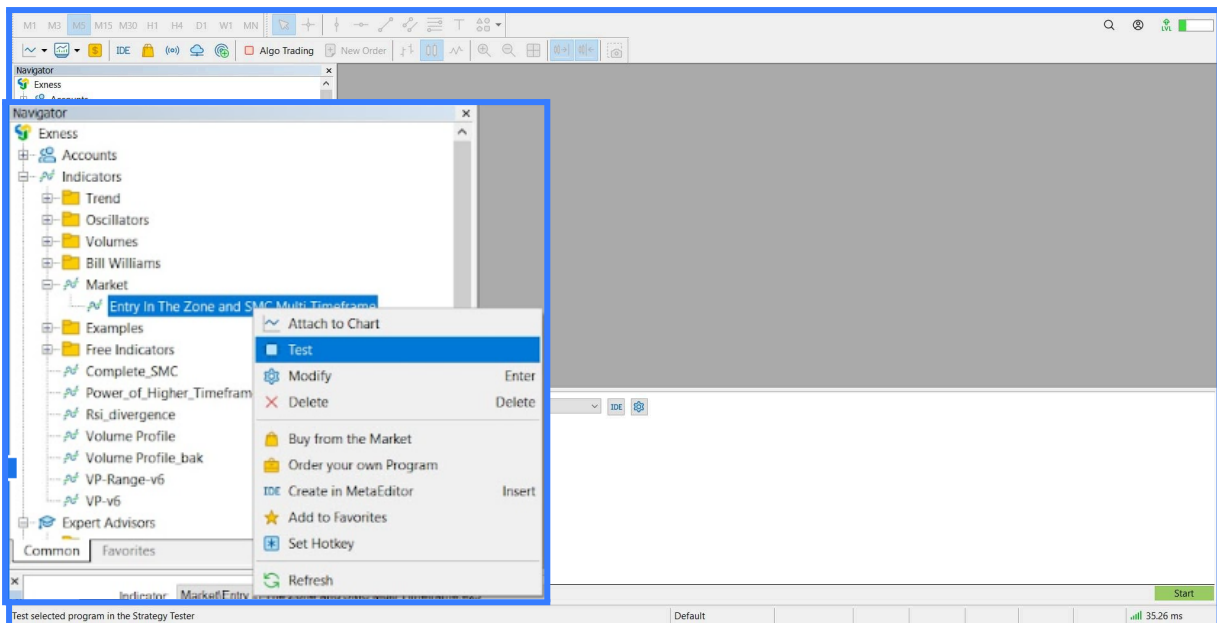
Smart Strength, Volume Profile, Bar Count Down, Power of Higher Timeframe, Adaptive RSI Filter, Price Action Radar

Step by Step Guide : Testing a Free Demo <https://youtu.be/IHWQRQLmniE>

On the indicator's page, click the Free Demo button to download the trial version into your MT5 platform. Once the download completes, you'll find the indicator under Indicators → Market in the left-hand navigation pane of MT5, as all Market-downloaded indicators are placed in that subfolder.

Next, right-click the indicator's name and choose Test from the context menu. The MT5 Strategy Tester window will then open.

1. Right-click on the **Entry In The Zone and SMC Multi Timeframe** program.
2. Select **Test**.



Make sure it is Entry In The Zone and SMC Multi Timeframe.ex5

1. Select the **symbol**
2. Select the **time frame** you wish to test.
3. Set the **date** range to Last year to ensure the test runs efficiently without being too slow.
4. Under **Modeling**, choose **1 Minute OHLC** since this is not a robot — the program will calculate using only the closing prices.
5. Finally, **click Start** to begin the test.

Indicator: MarketEntry In The Zone and SMC Multi Timeframe.ex5

1 Symbol: XAUUSDc H1 2

Date: Last year 2025.01.01 2025.05.23 3

Modelling: 1 minute OHLC 4

5 Start

Market Watch: 10:29:56

Symbol	Bid	Ask	Daily Cha...
BTCUSDc	96844.66	96859.06	0.02%
AUDCADc	0.89238	0.89260	-0.35%
AUDCHFc	0.53274	0.53283	-0.79%
AUDIPLc	92.634	92.633	-0.44%
AUDNZDc	1.08036	1.08056	-0.11%
AUDUSDc	0.64688	0.64697	-0.52%
CADIPYc	103.788	103.826	-0.10%
EURUSDc	1.12876	1.12900	0.26%

Indicator: MarketEntry In The Zone and SMC Multi Timeframe.ex5 1

Symbol: XAUUSDc H1 2

Date: Last year 2025.01.01 2025.05.06 3

Modelling: 1 minute OHLC 4

5 Start

 The difference between the
Indicator version

The difference between the Indicator version and the Utility version (Risk Per Trade)



Would you like a Risk Per Trade Calculator as well? :

<https://www.mql5.com/en/market/product/132925>

📌 What is the difference between the Indicator version and the Utility version (Risk Per Trade) of the program 'Entry In The Zone with SMC Multi Timeframe'?

- *Both versions have exactly the same features. The only difference is that the Utility version includes the Risk Per Trade function. *All other functions remain the same.
- If you already have other Trade Assistant tools, or plan to purchase other Trade Assistant tools in the future, it is recommended to use the Indicator version, as it allows you to attach other Trade Assistant tools to the chart.
- *On the other hand, the Utility version (which includes the Risk Per Trade function) does not support attaching other Trade Assistant tools to the chart.
- However, the advantage of the Utility version is that it simplifies the setup process, as there is no need to add anything else.

 Actual screenshot example

Actual screenshot example captured from the "Entry In The Zone and SMC Multi Timeframe" indicator

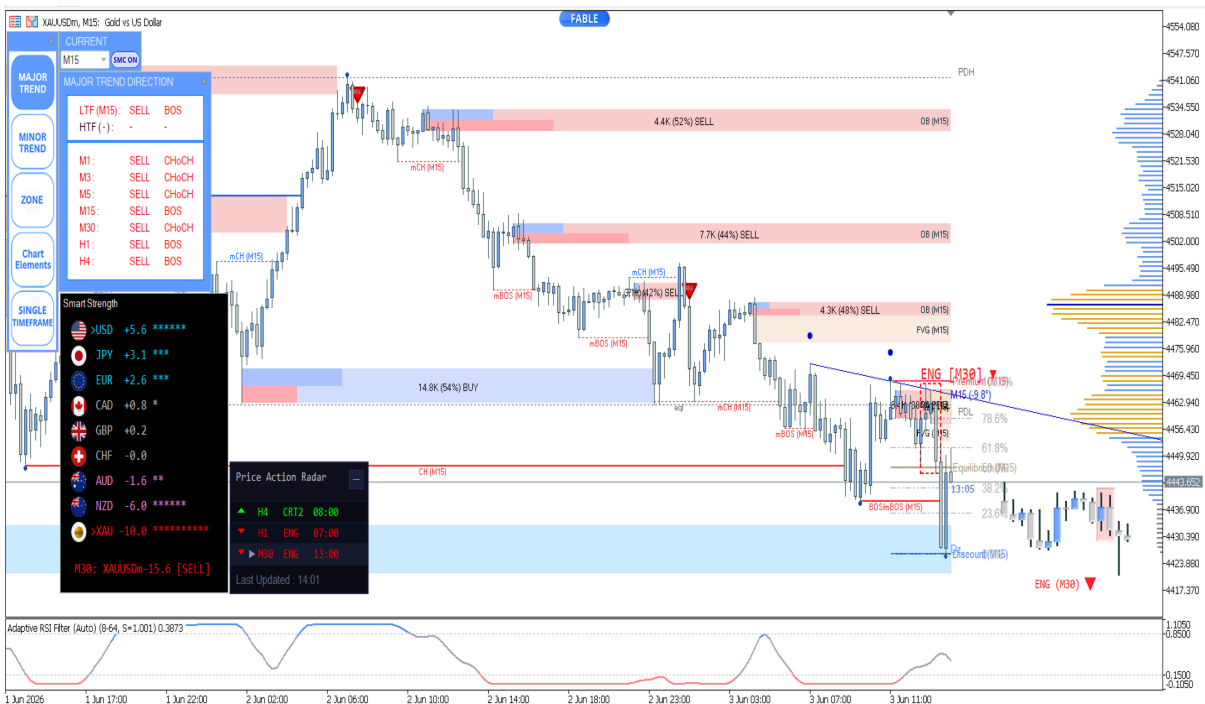
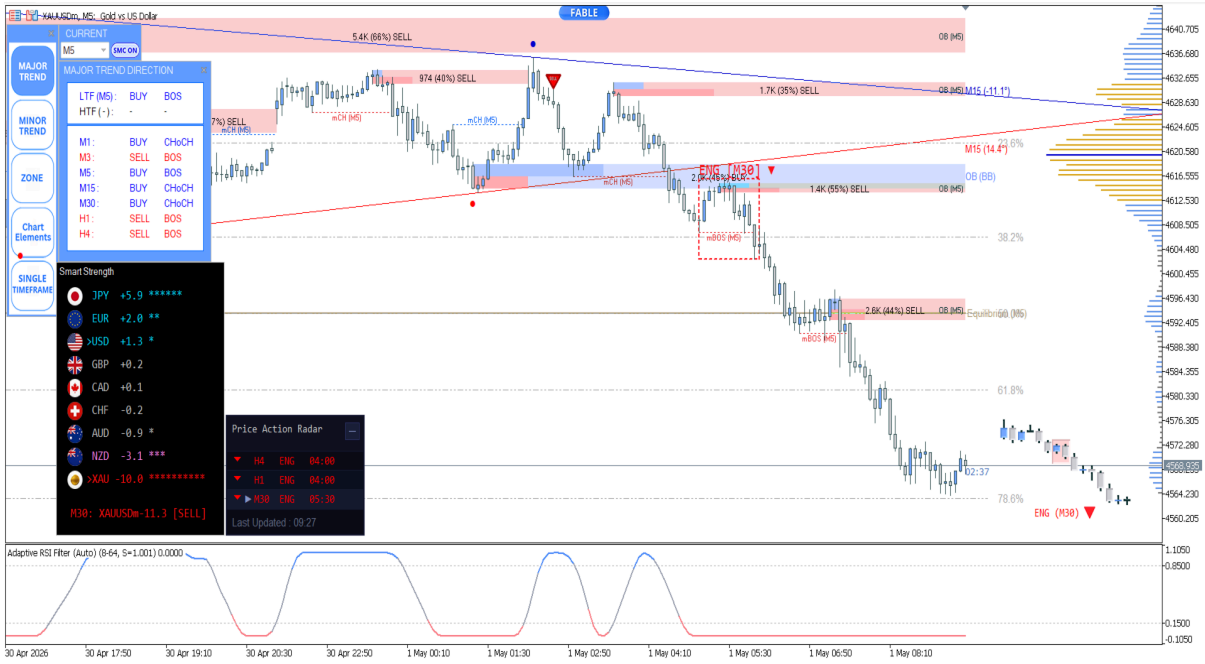
This program's Buy/Sell signals are designed to appear only when there are clear conditions and a chance that the price may reverse upon entering important zones. We focus on filtering out false signals and avoiding those generated during unclear sideways market movements, in order to improve accuracy and reduce the risk of entering trades.

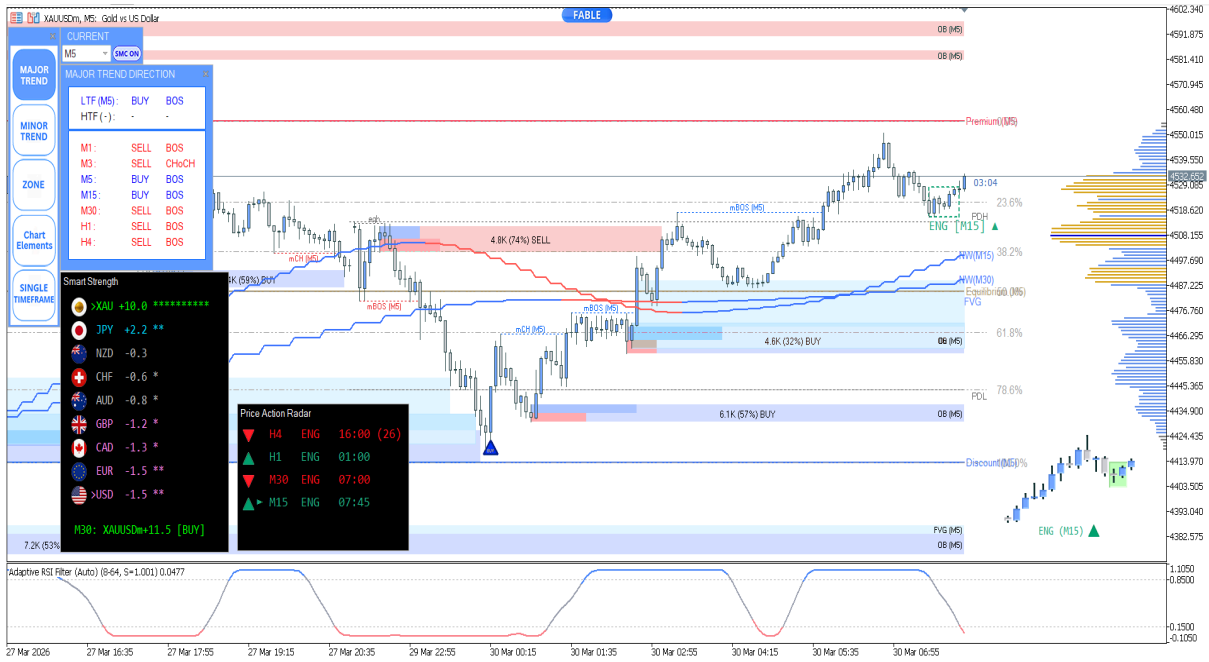
This indicator is designed to be both flexible and powerful. It can be used with Gold (XAU), Silver (XAG), major and minor currency pairs, US30, USOIL, as well as other assets, to help you analyze the market and make confident trading decisions.

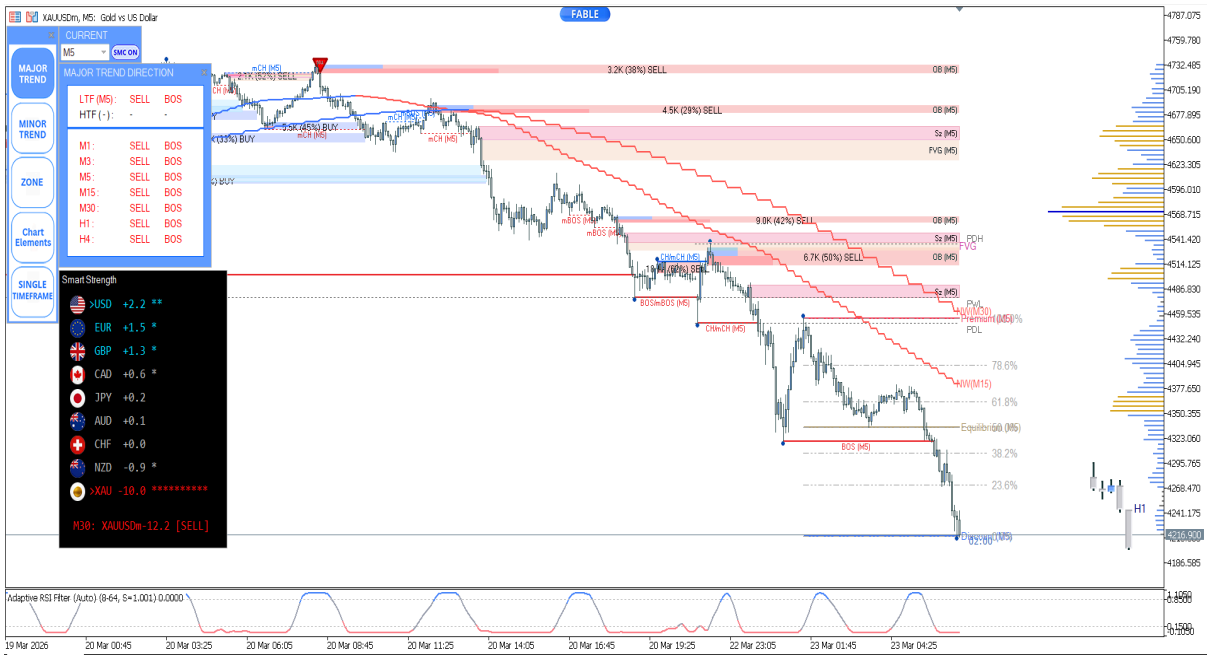
⚠️ For your safety, we recommend avoiding trading against the trend. If the **MAJOR TREND** dashboard shows the same direction across multiple timeframes, look for entry signals in the same direction as the MAJOR TREND dashboard for the best trading opportunities.

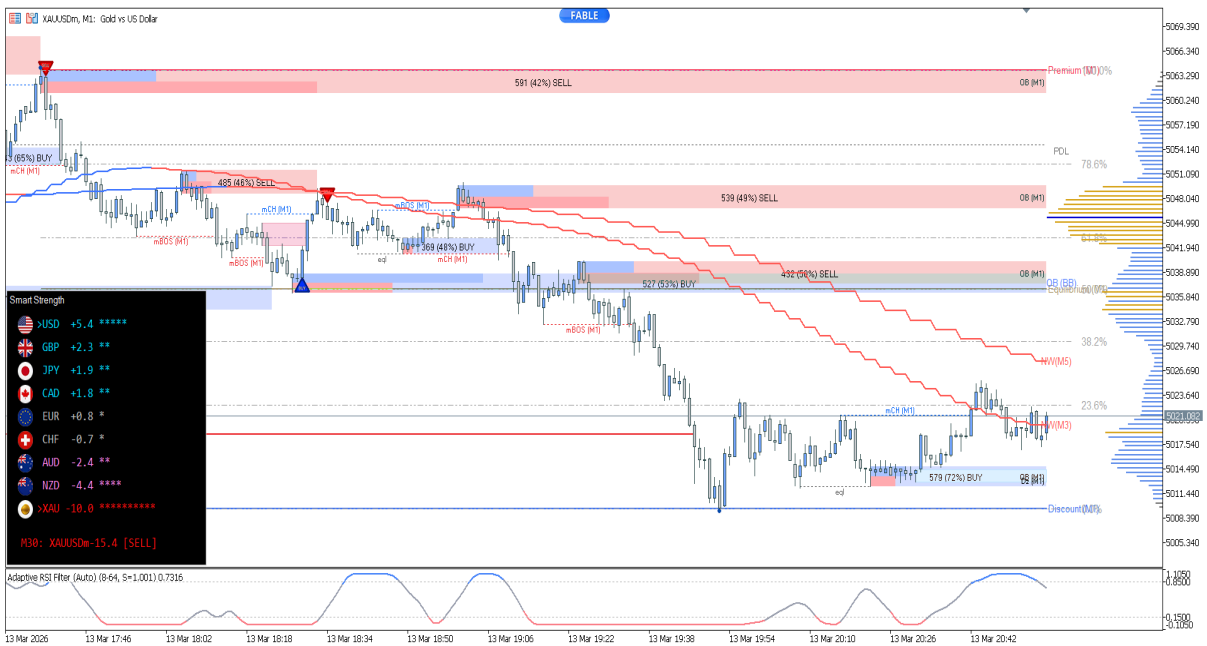
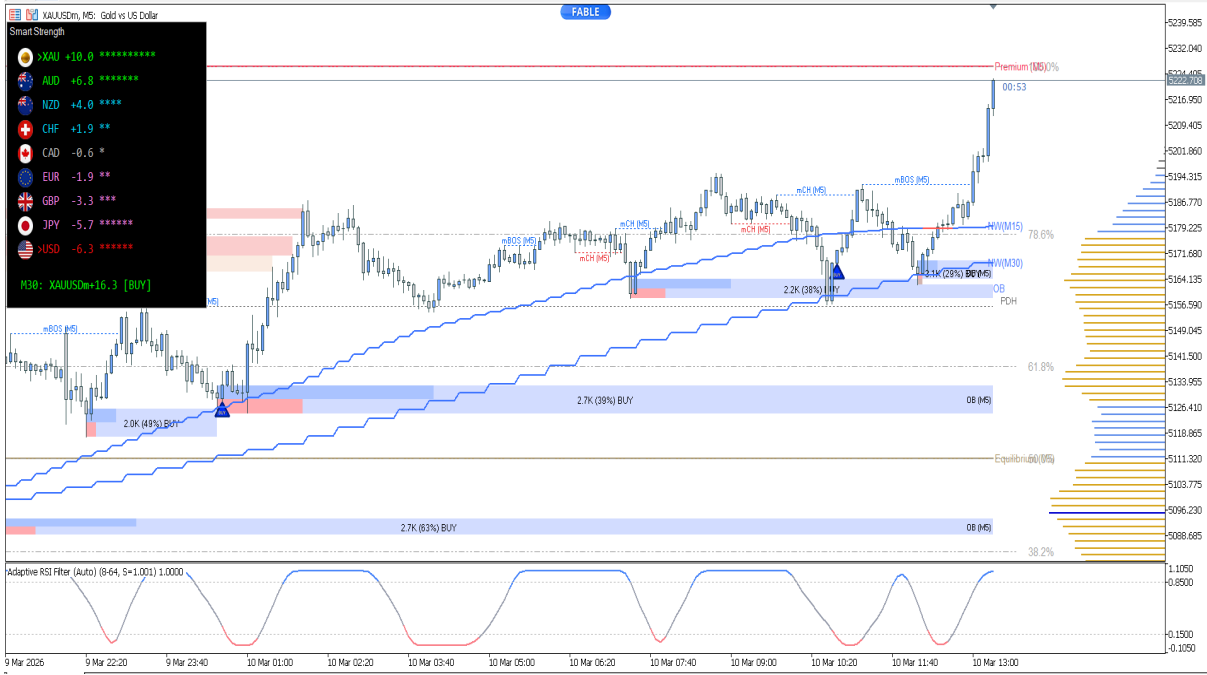
📺 Join Us Now for Real-Time Forward Testing : [Fable Edge](https://www.youtube.com/@FableEdge)
<https://www.youtube.com/@FableEdge>

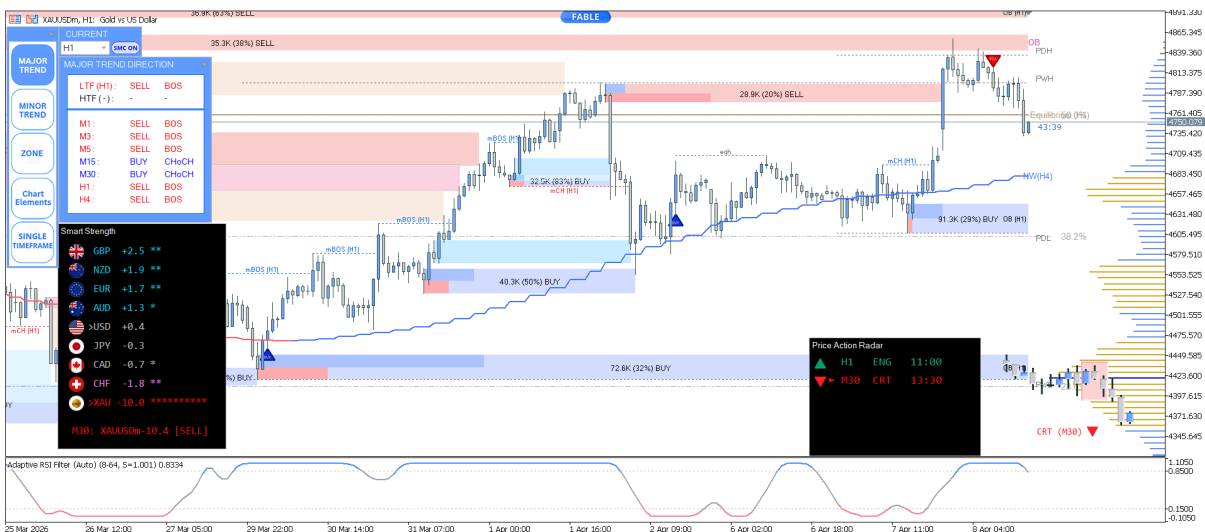
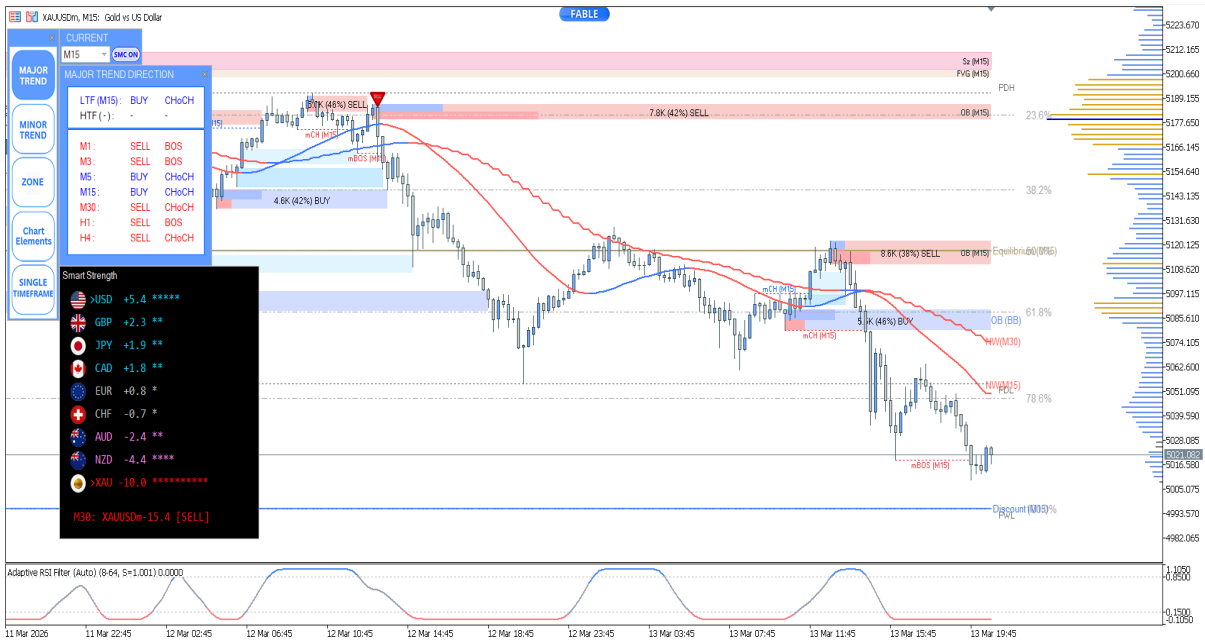


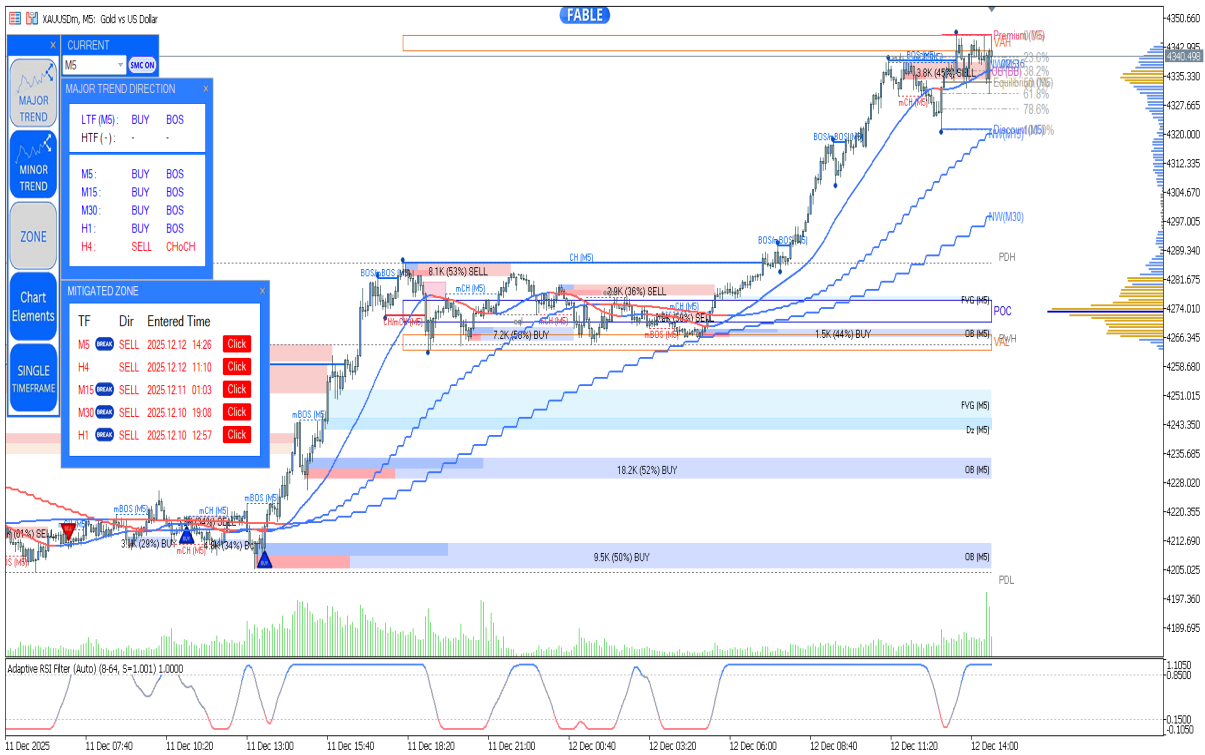
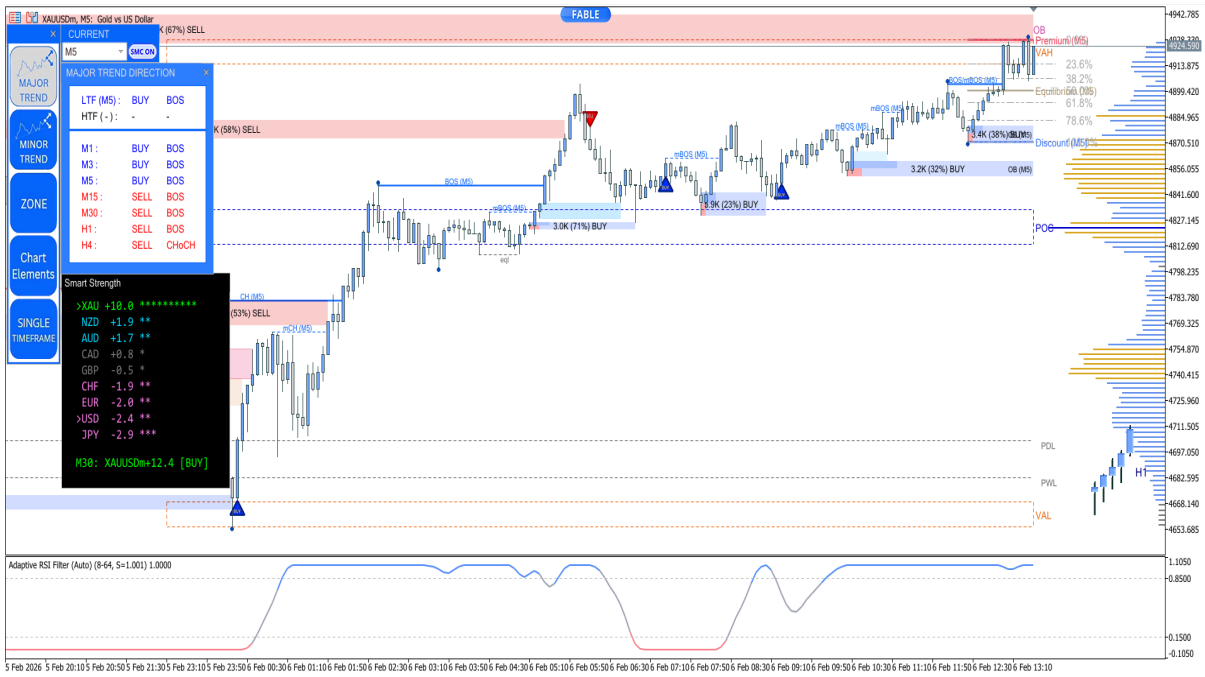


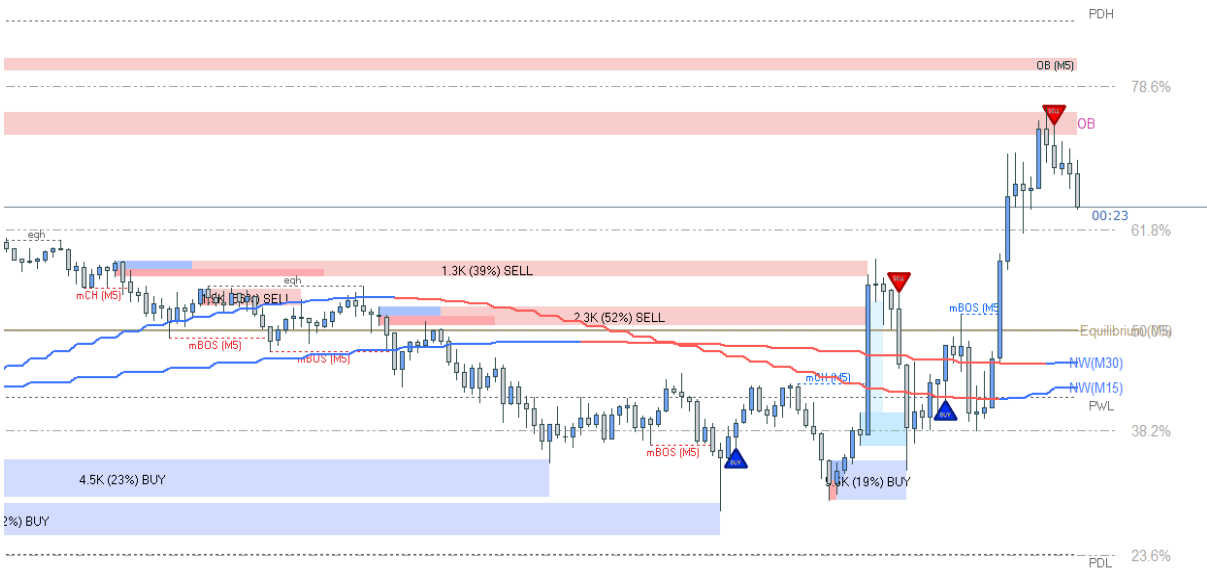
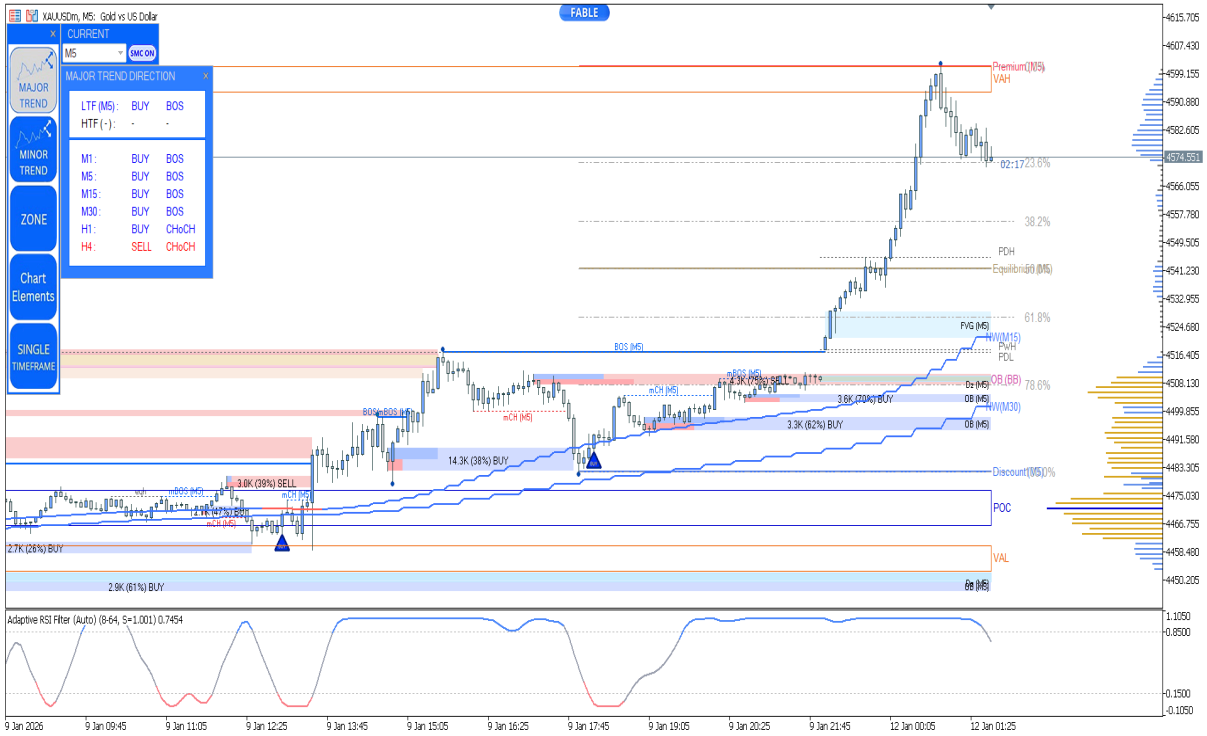


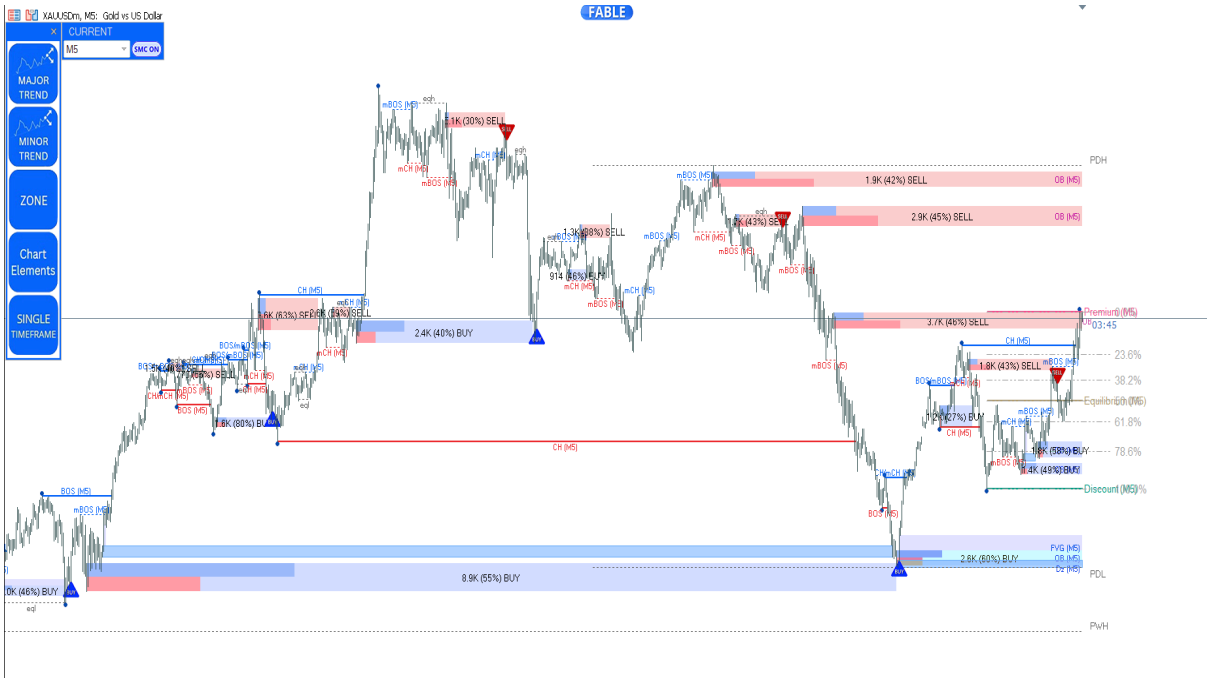
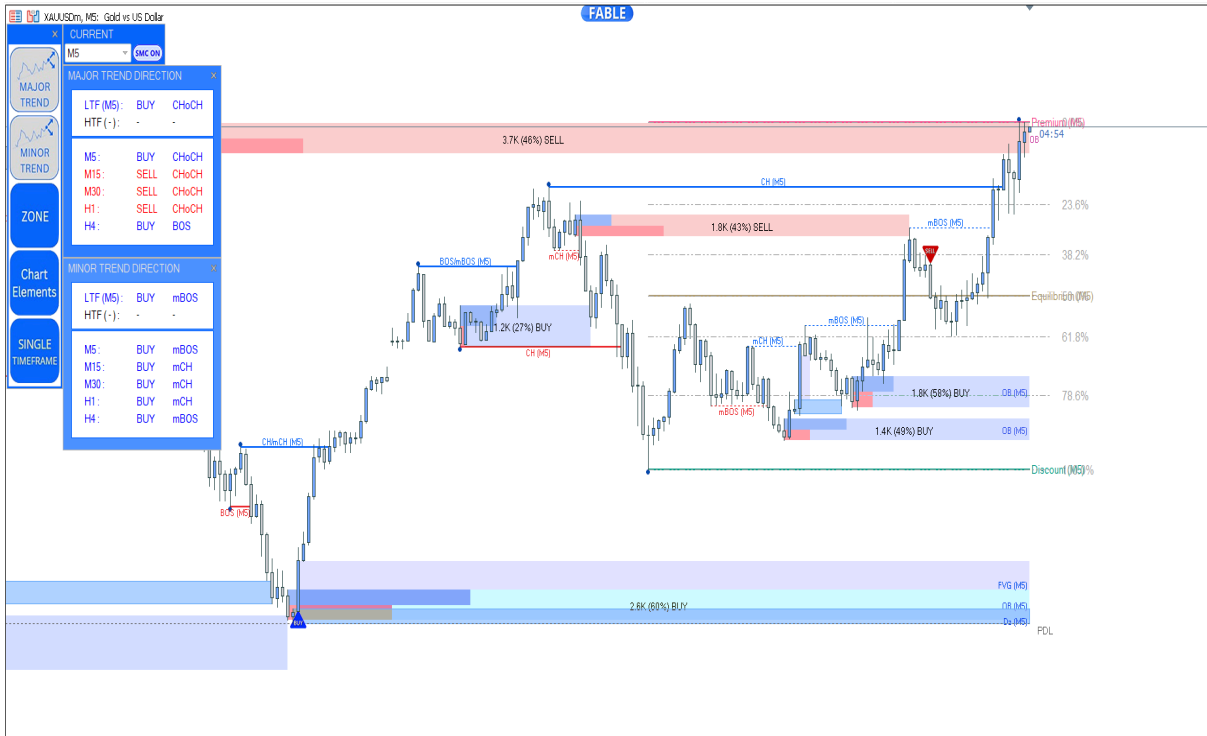


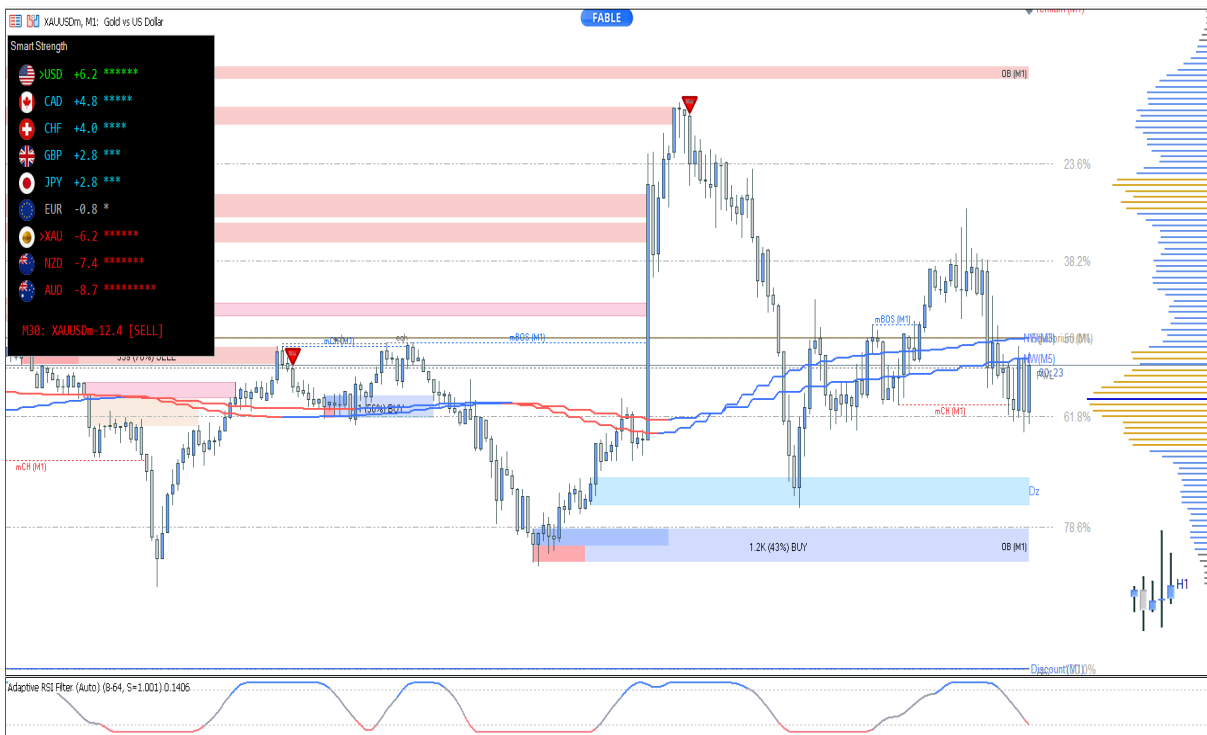
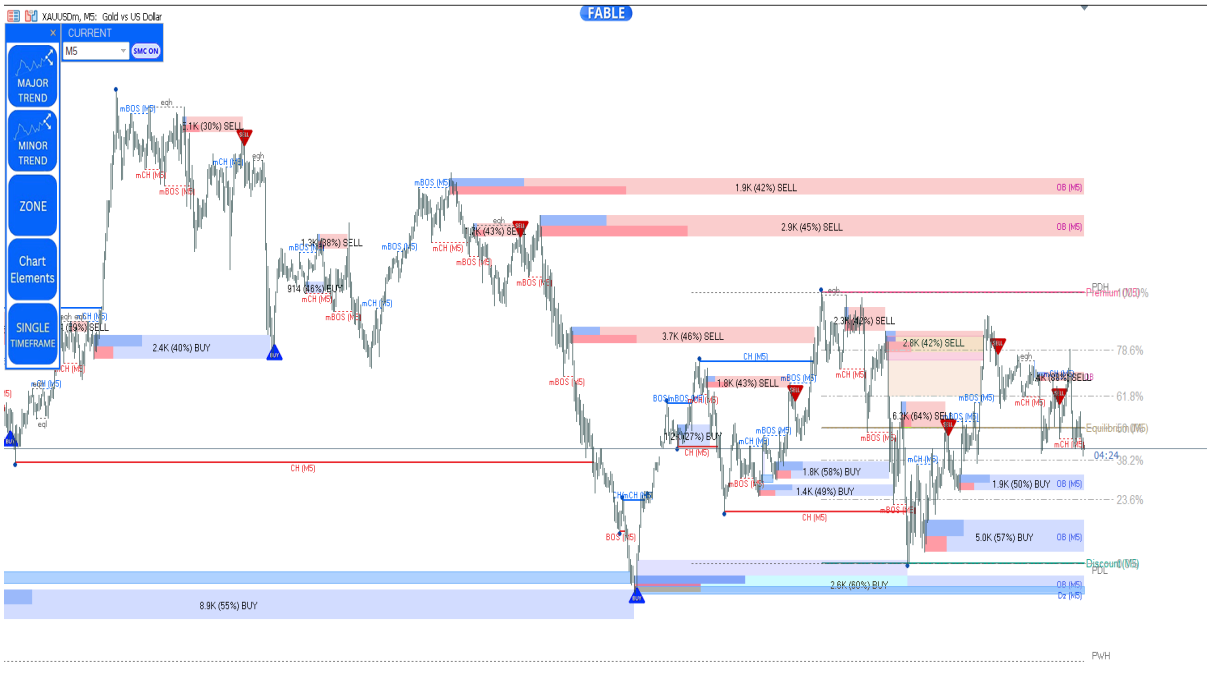


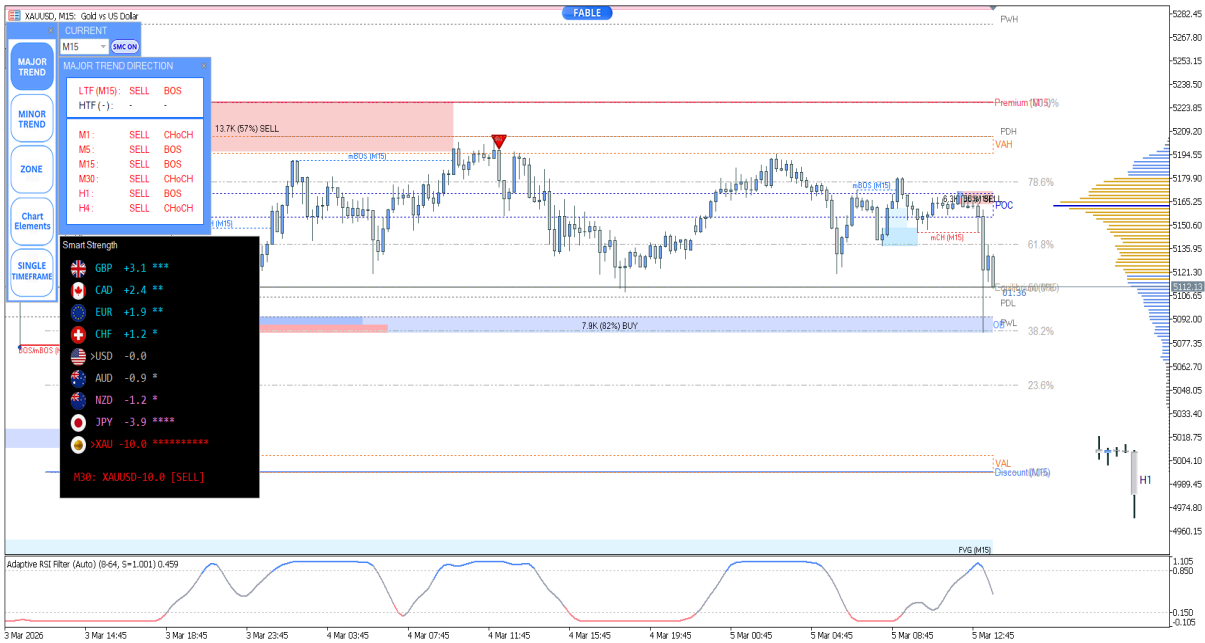
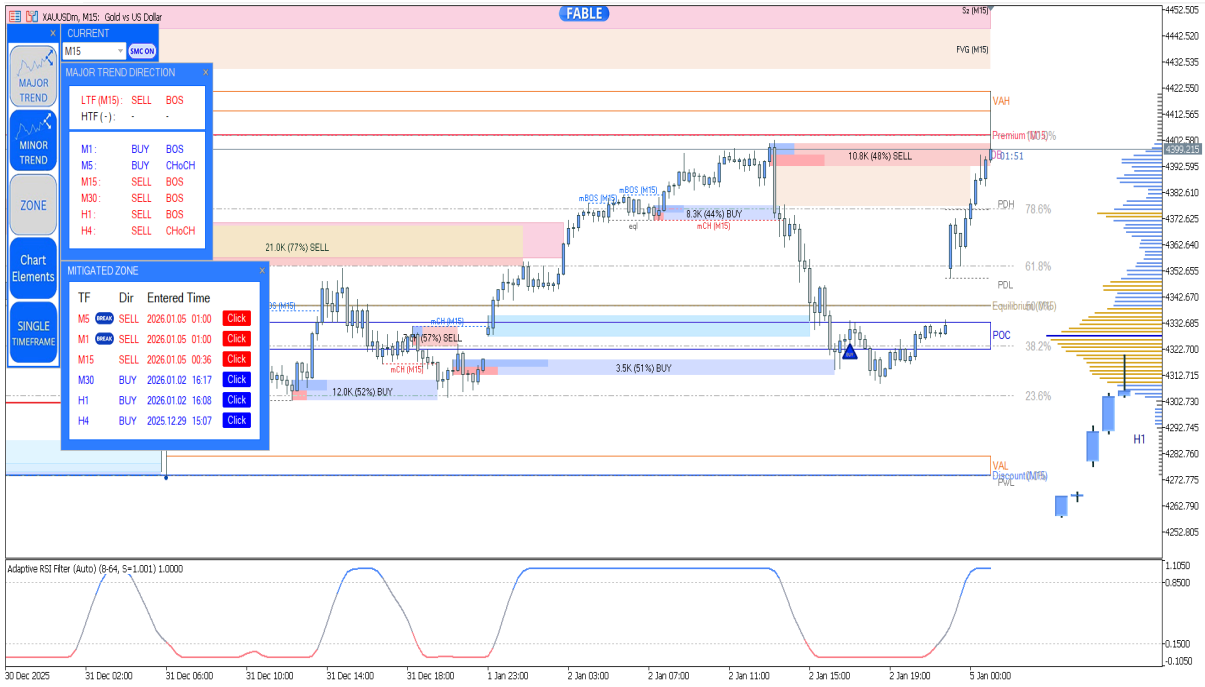


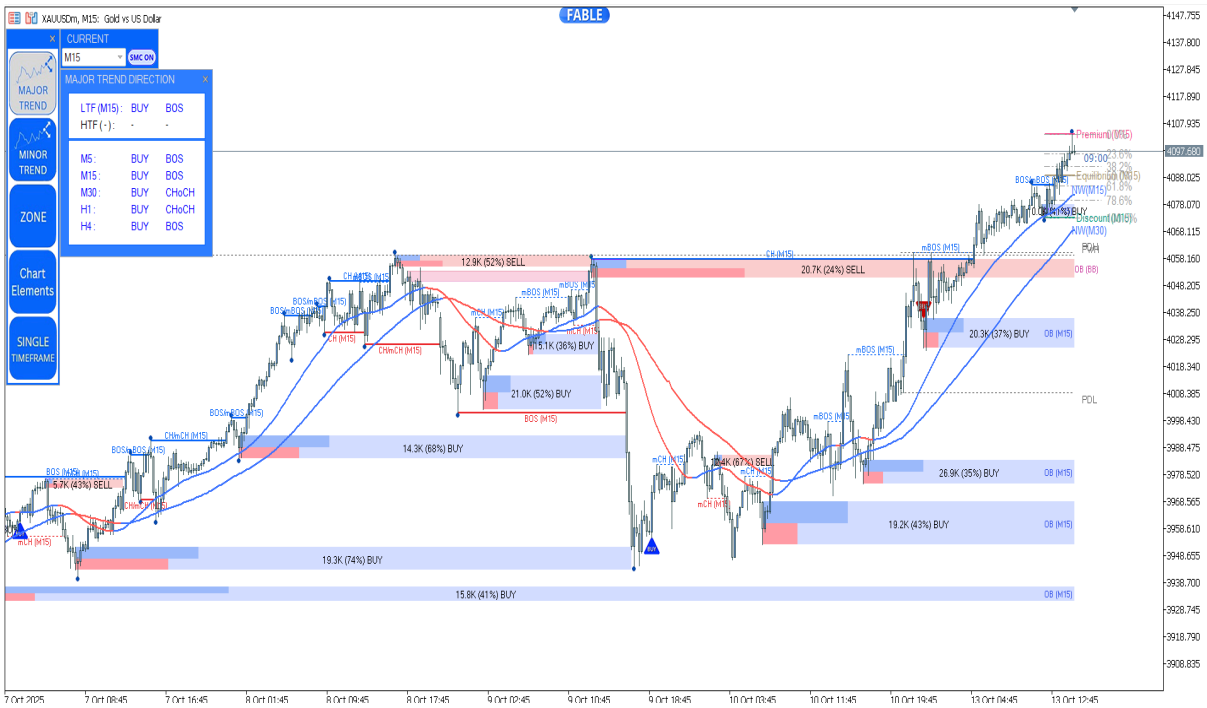
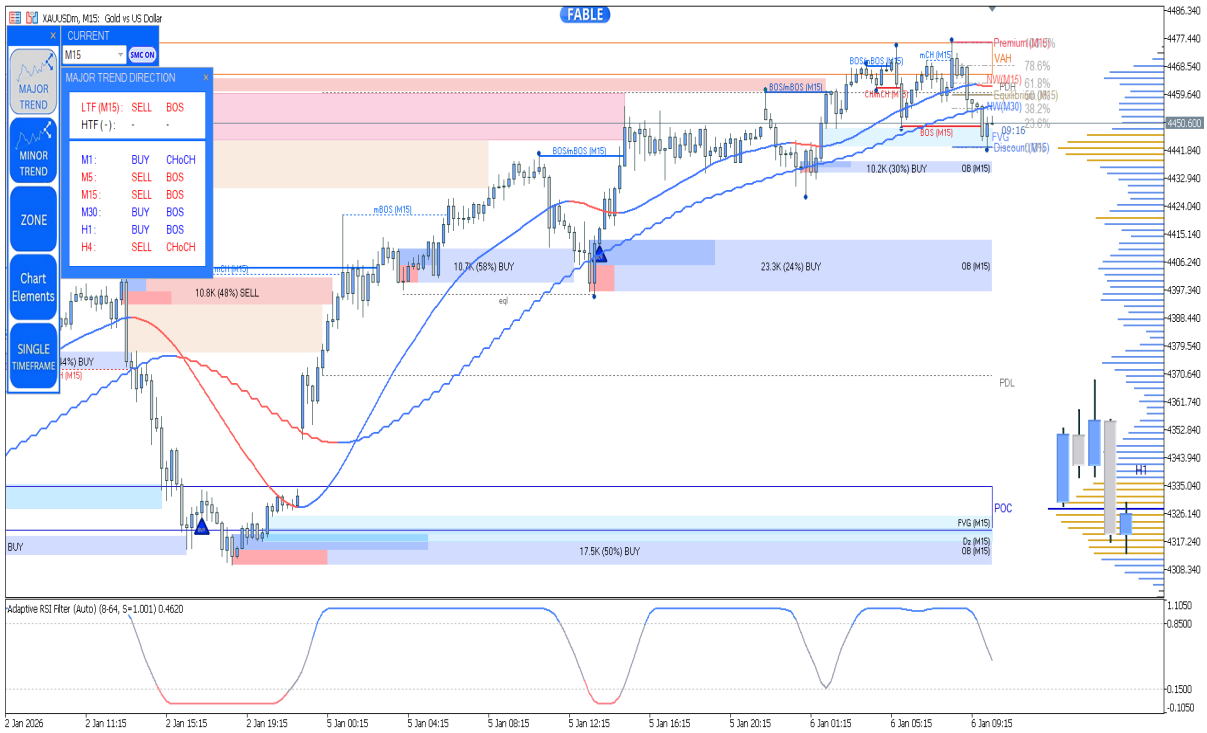


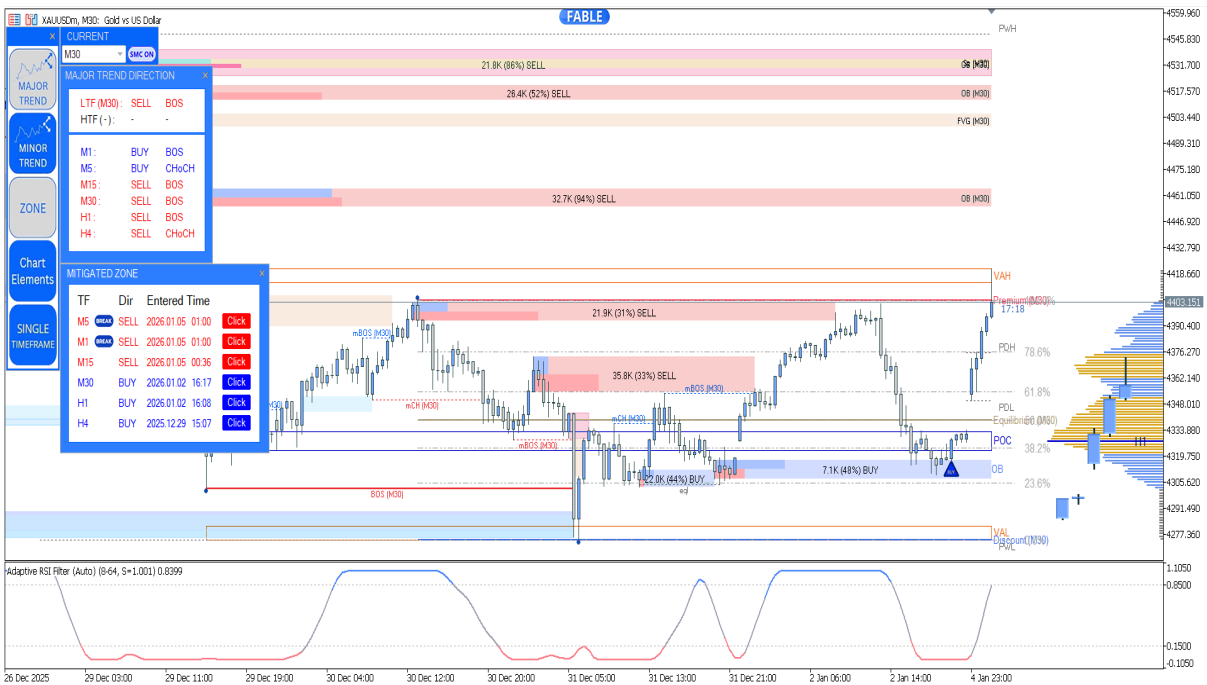
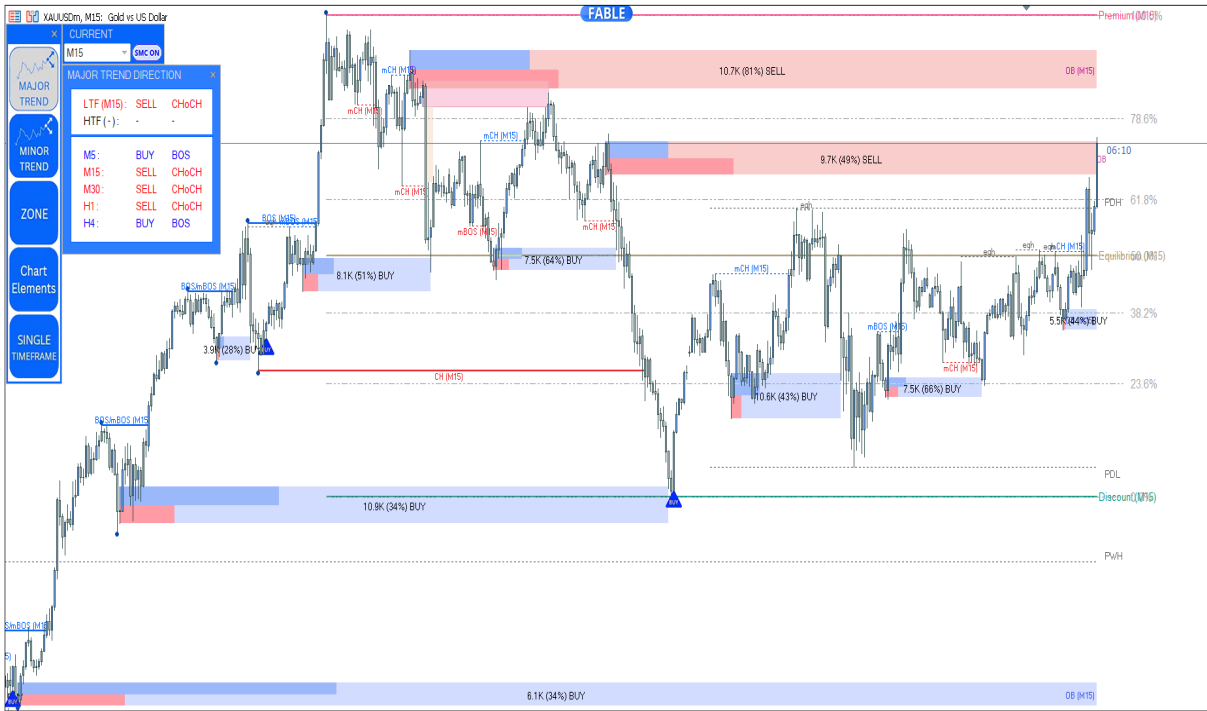


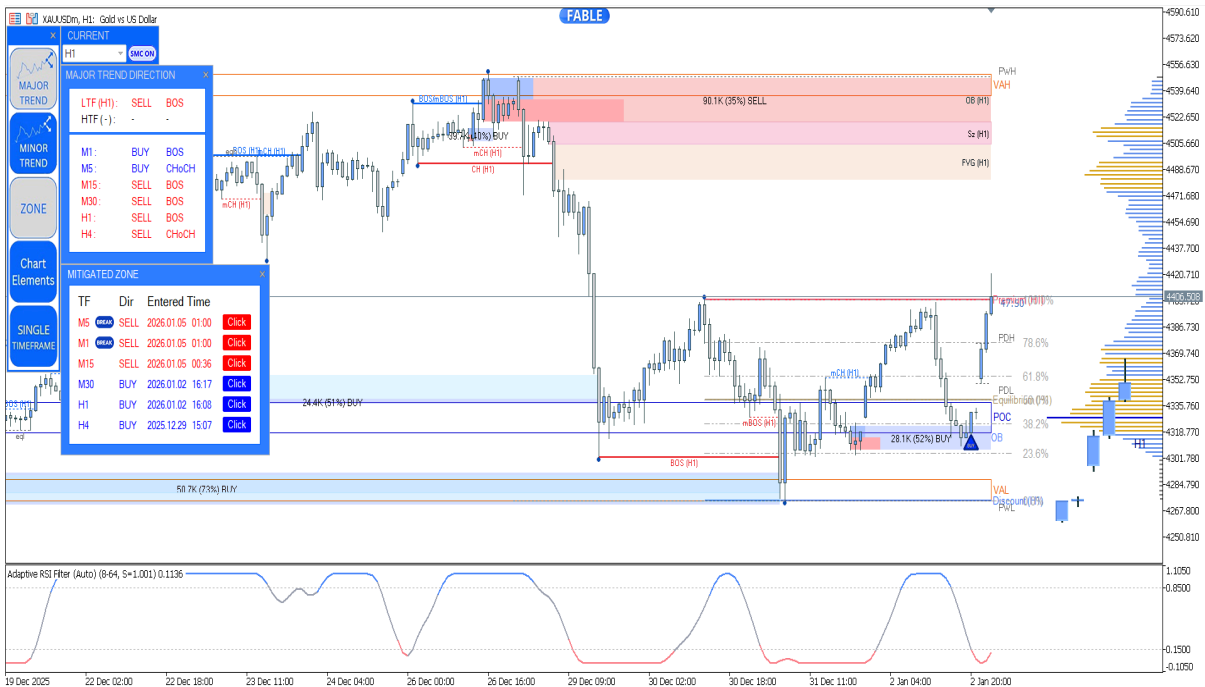
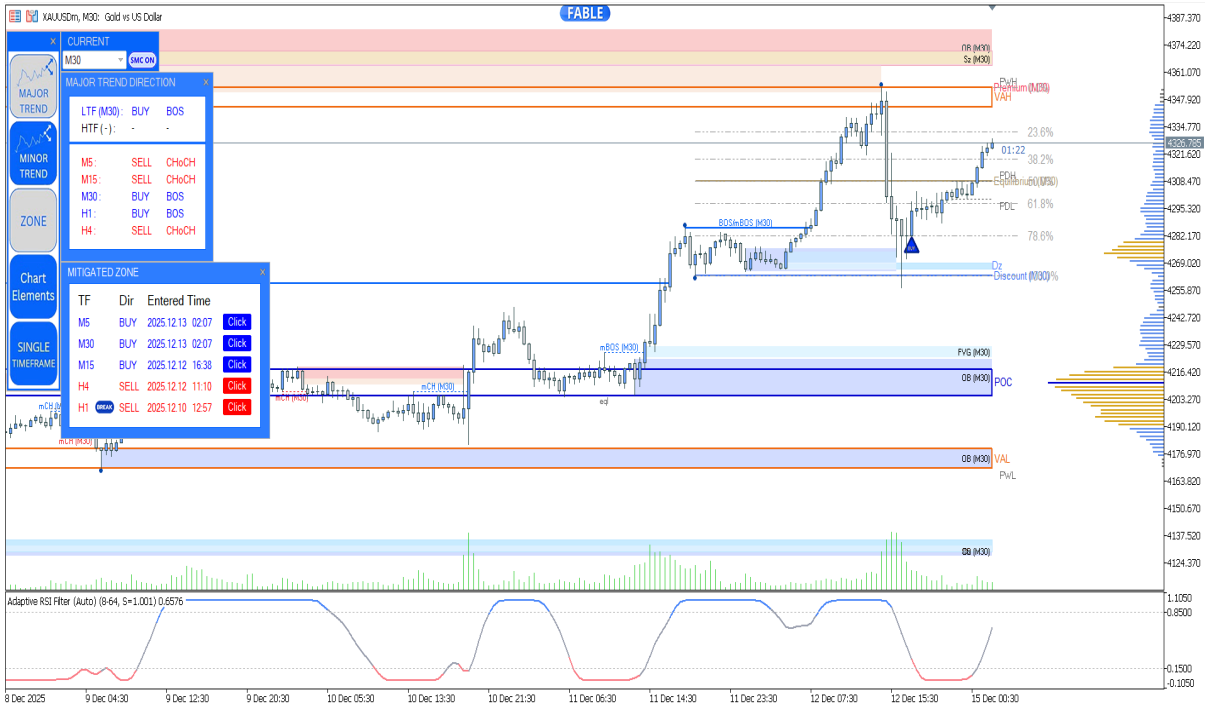


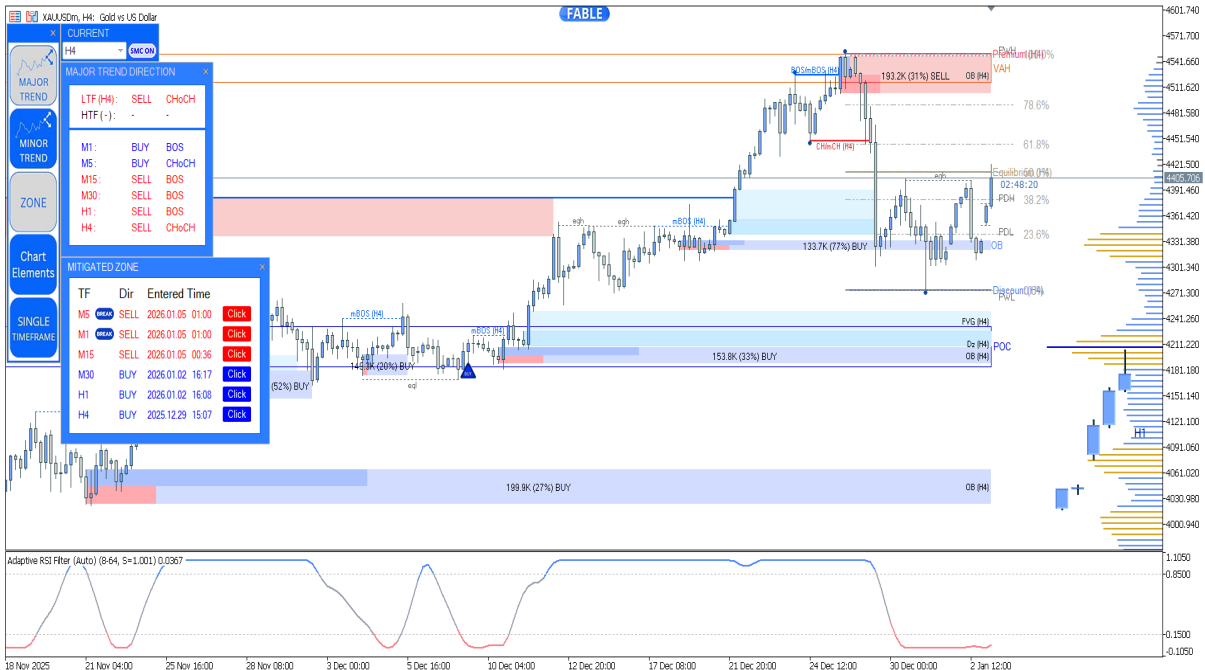
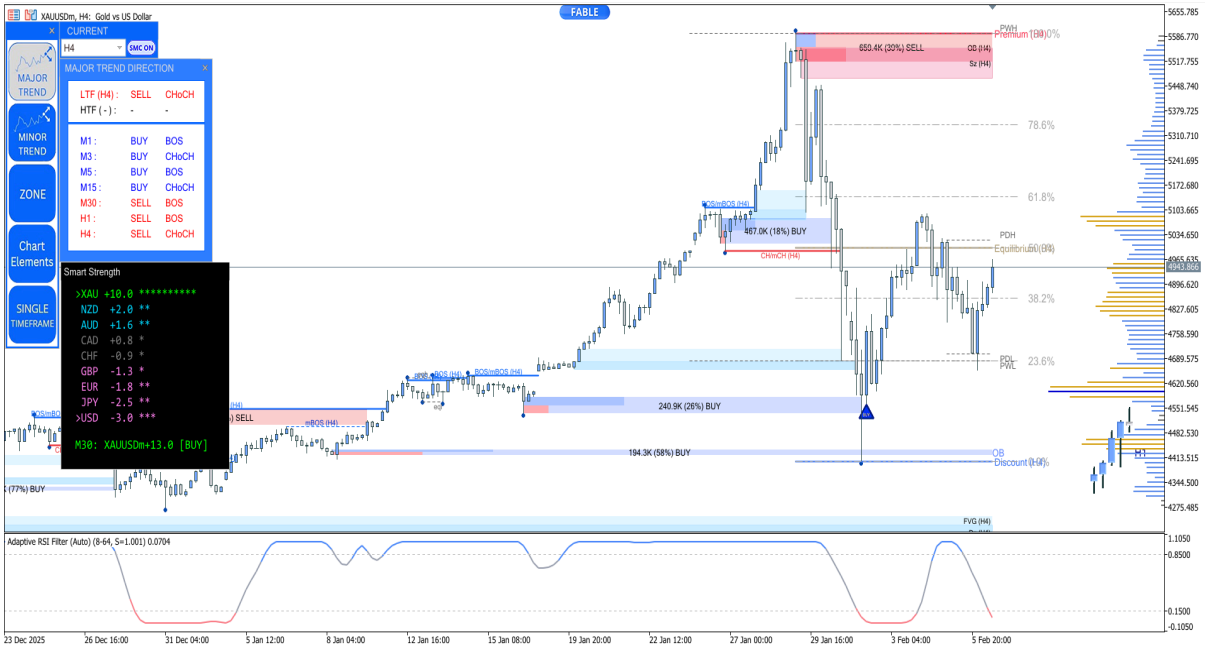


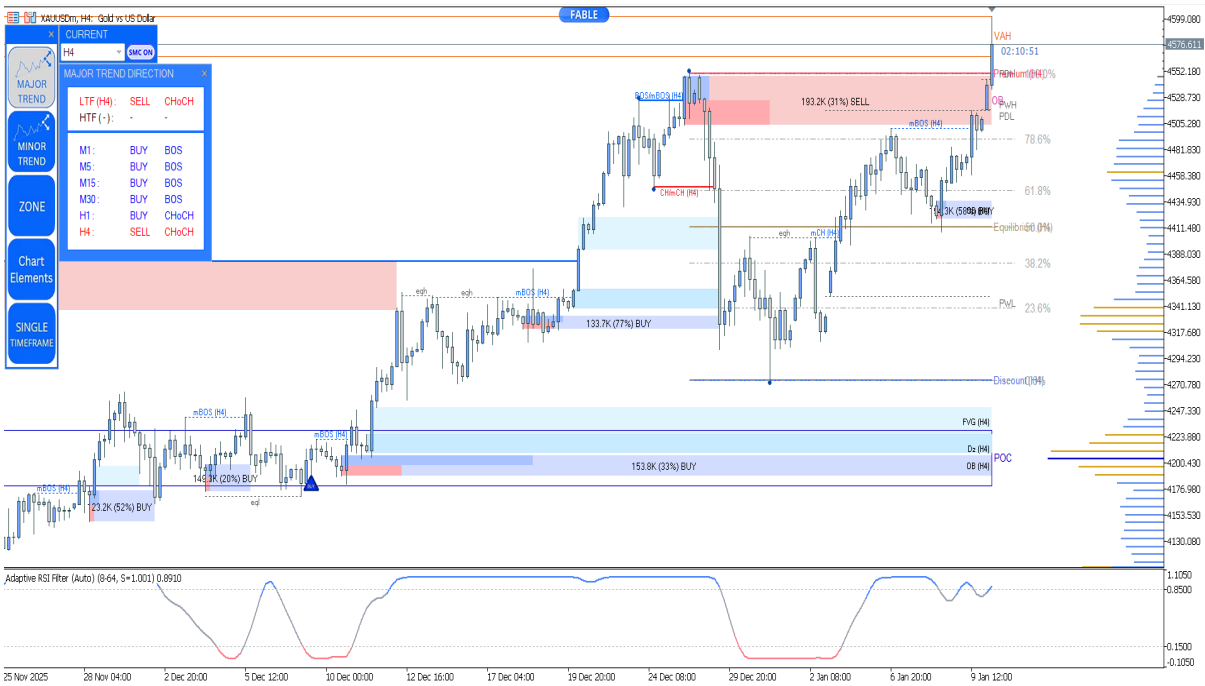
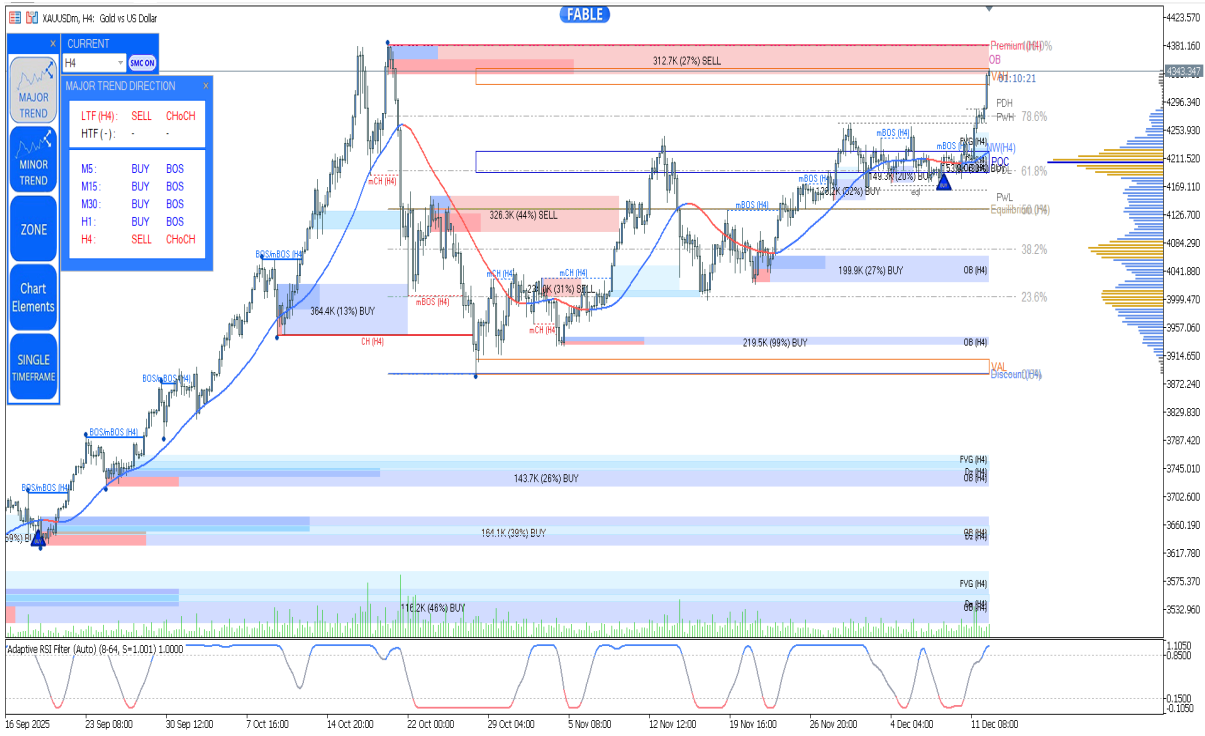


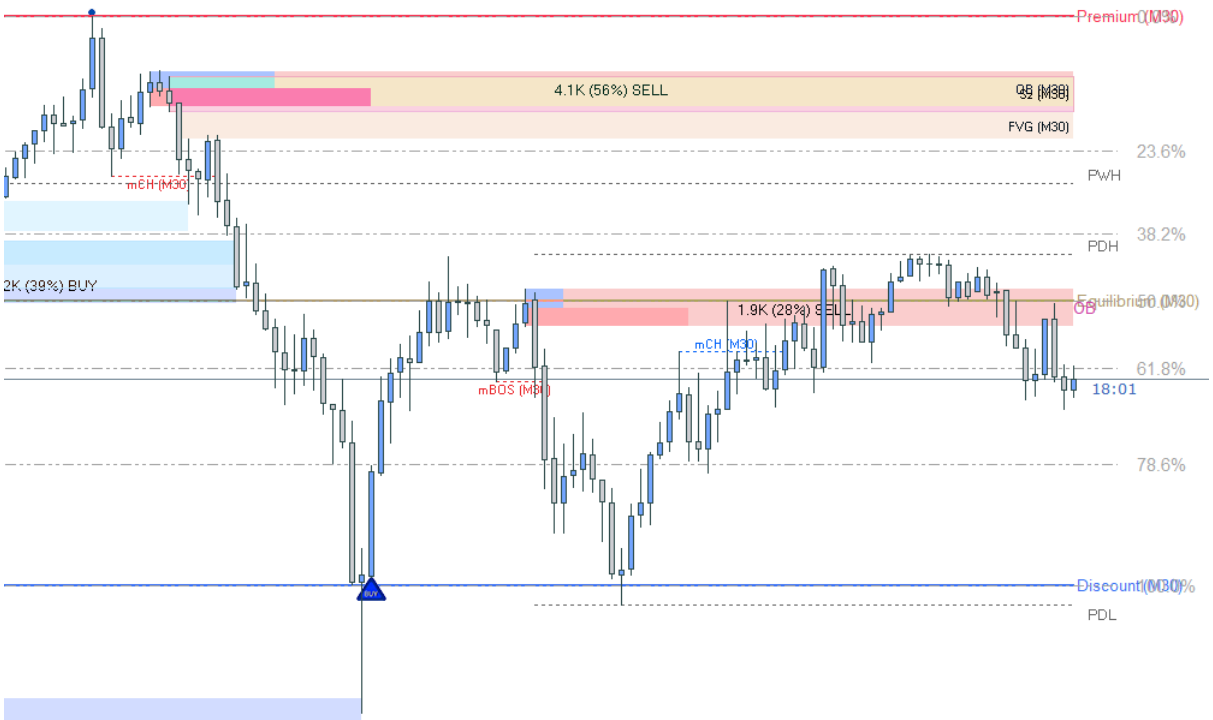
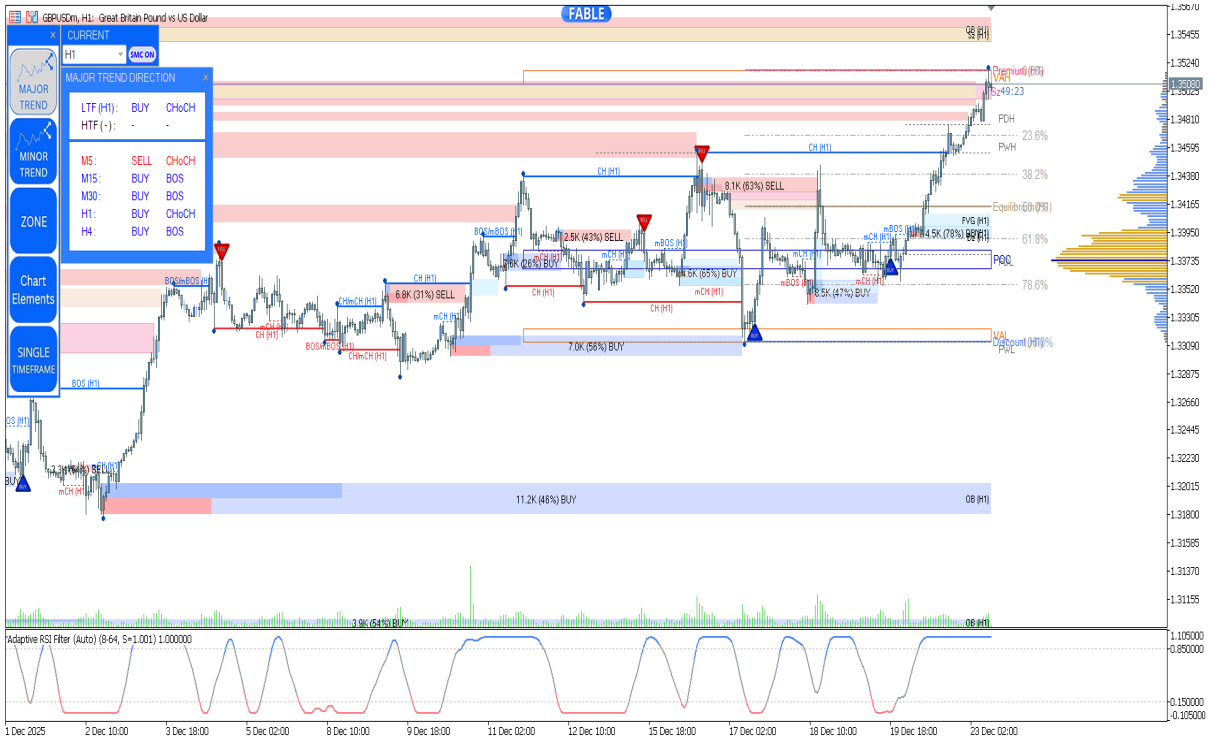


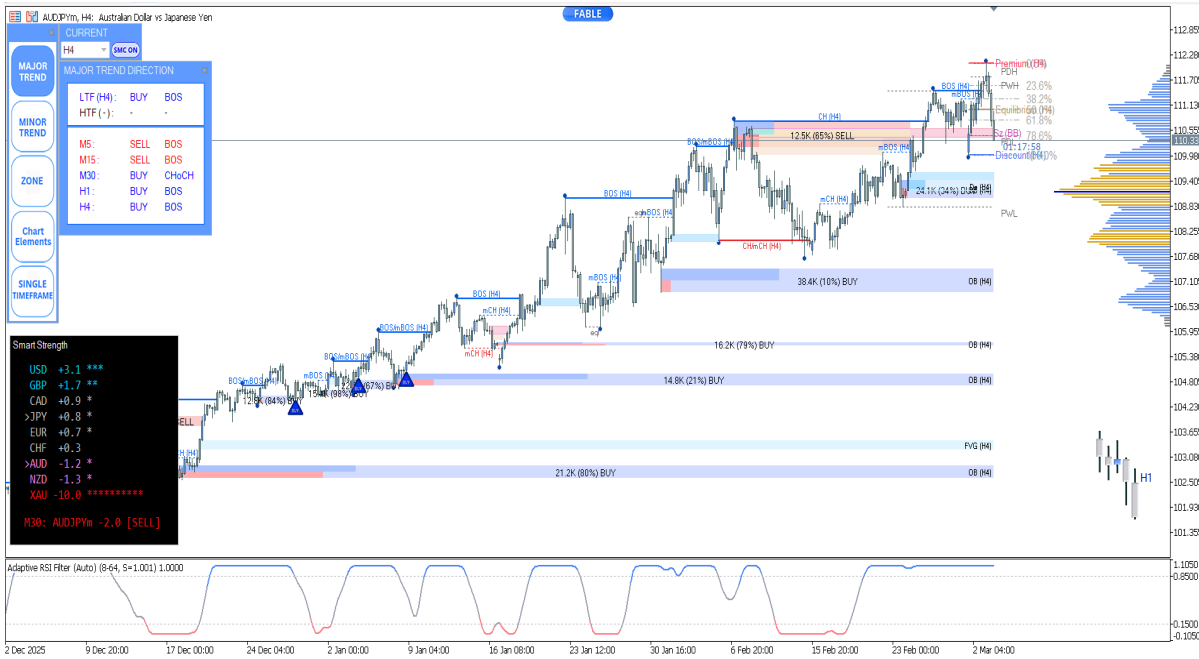
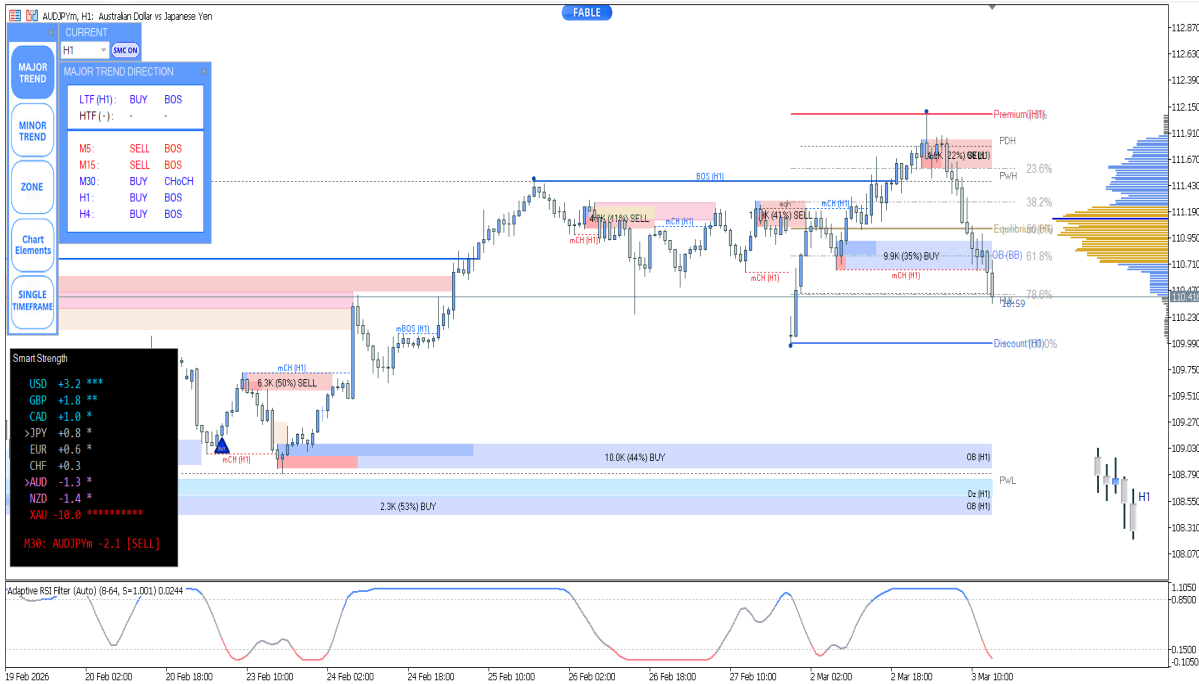


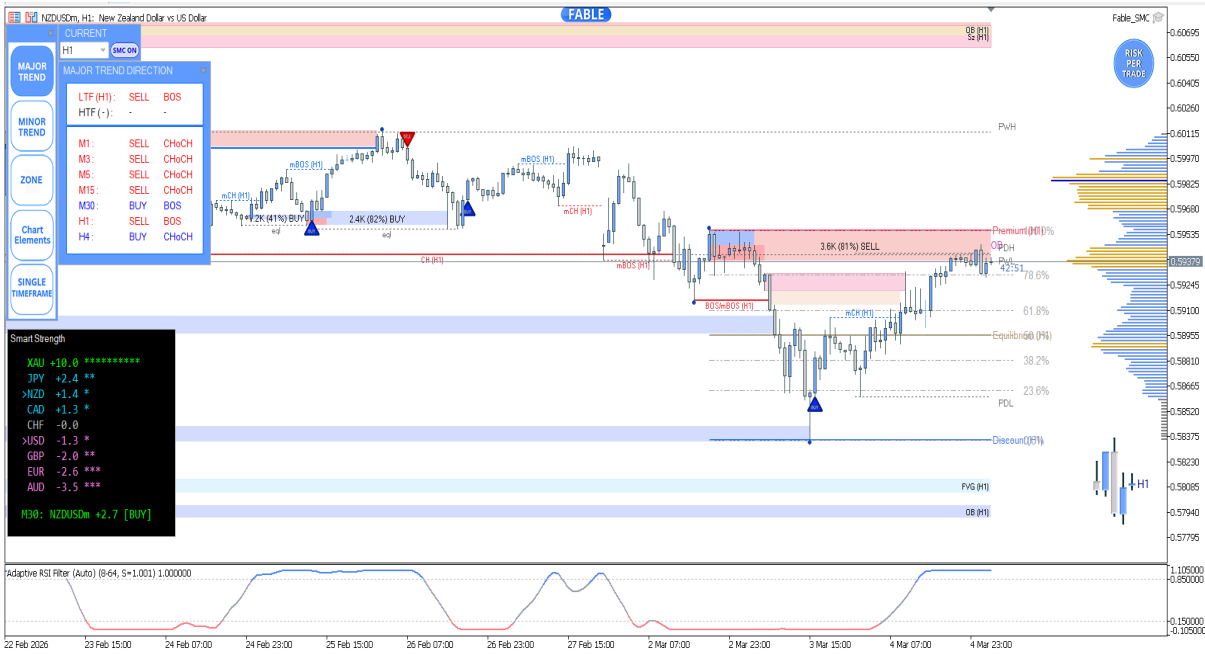
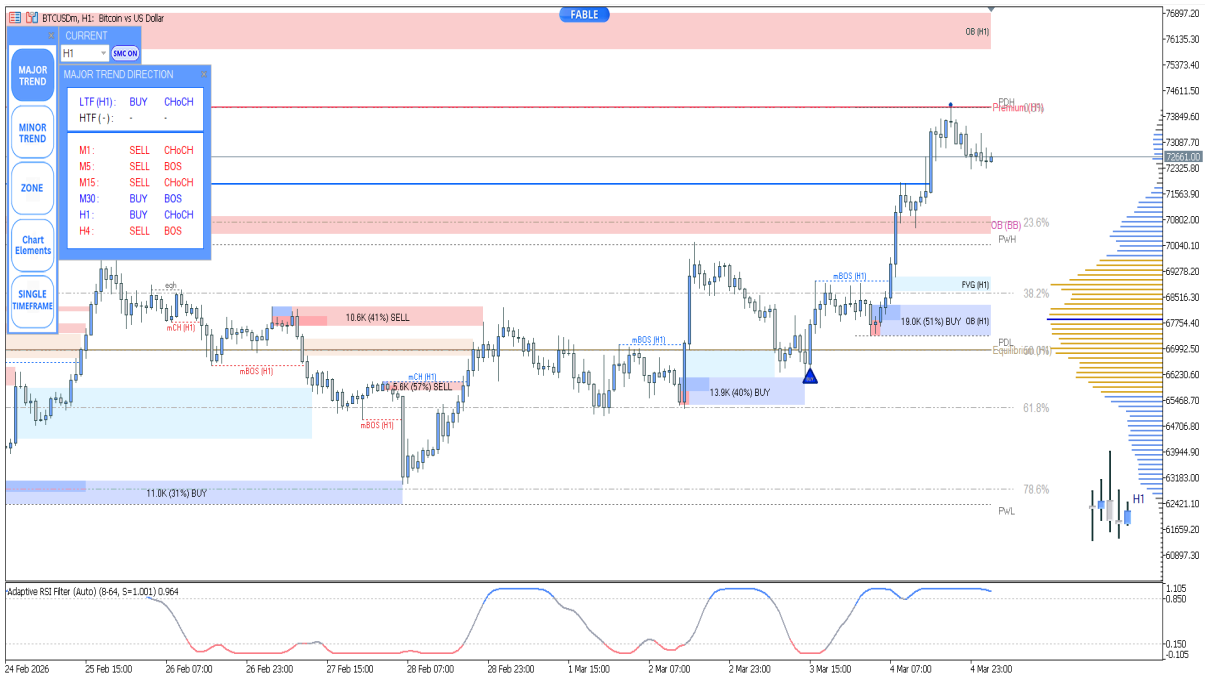


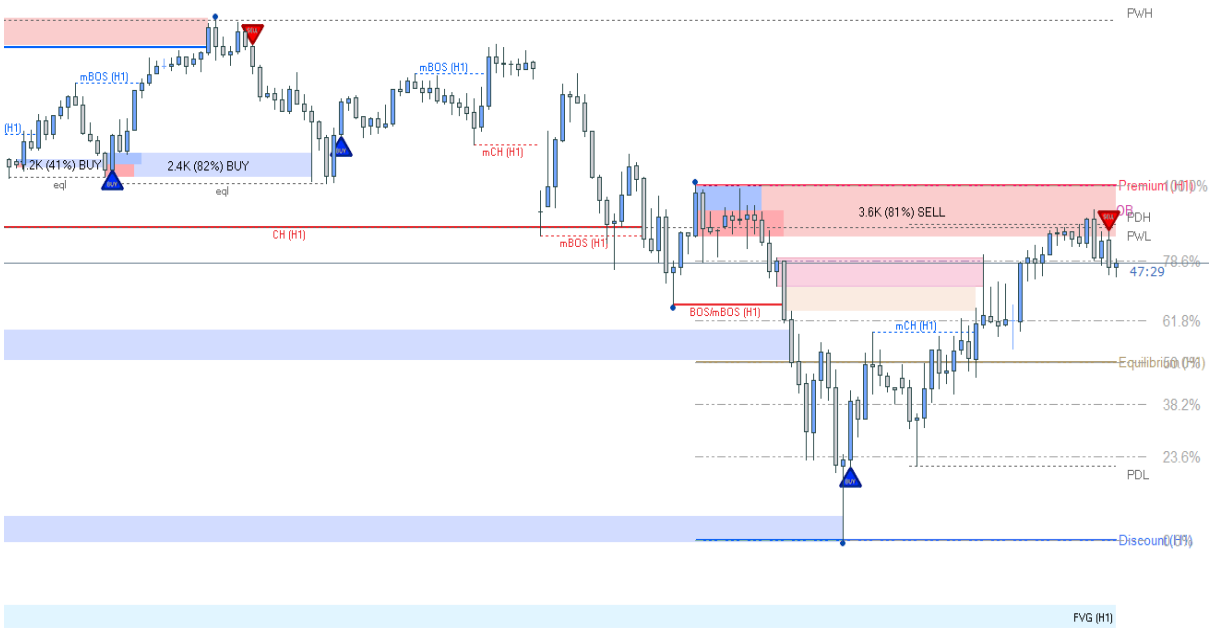
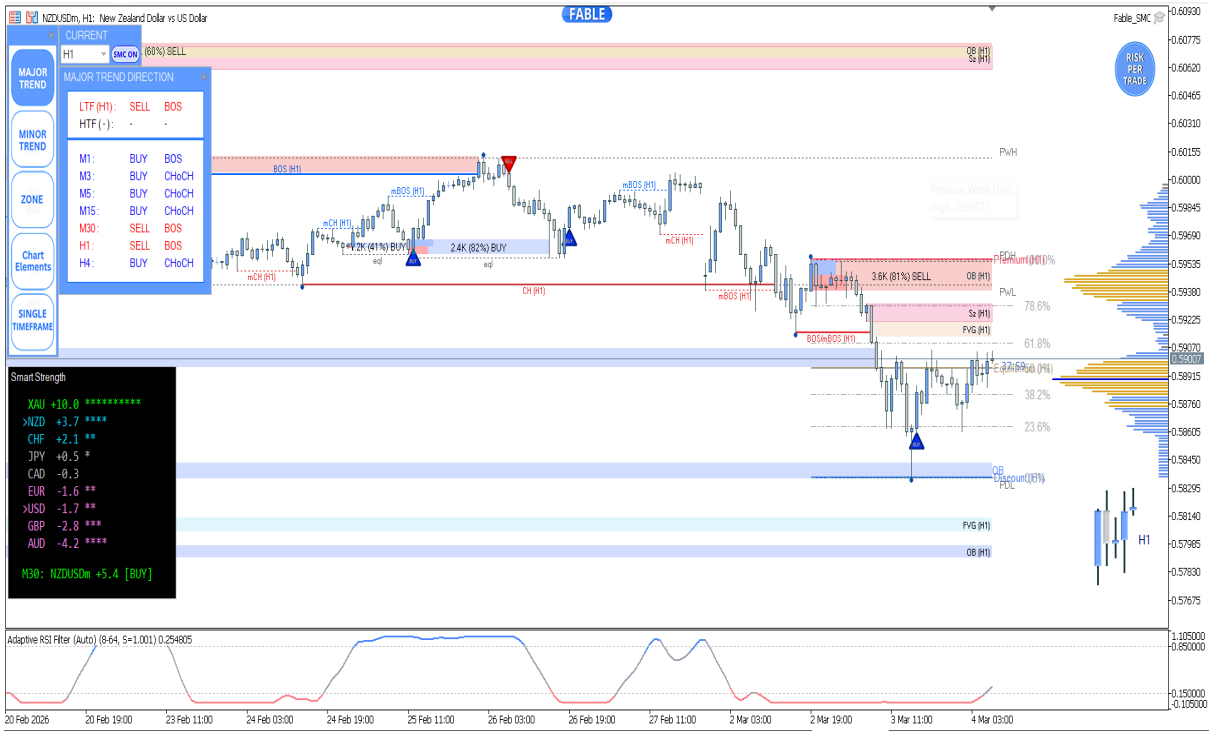


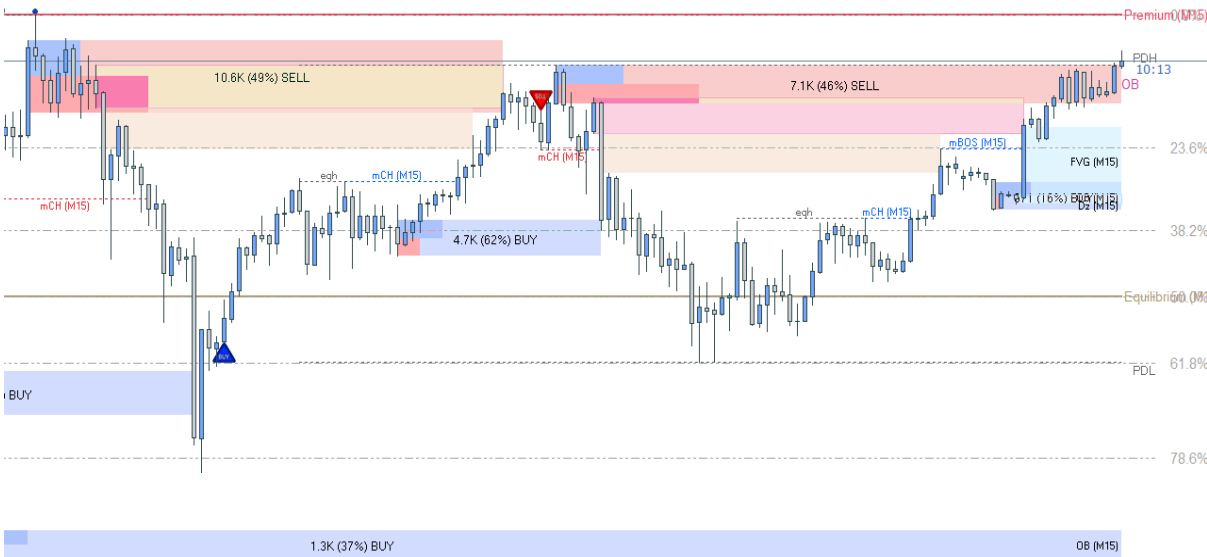


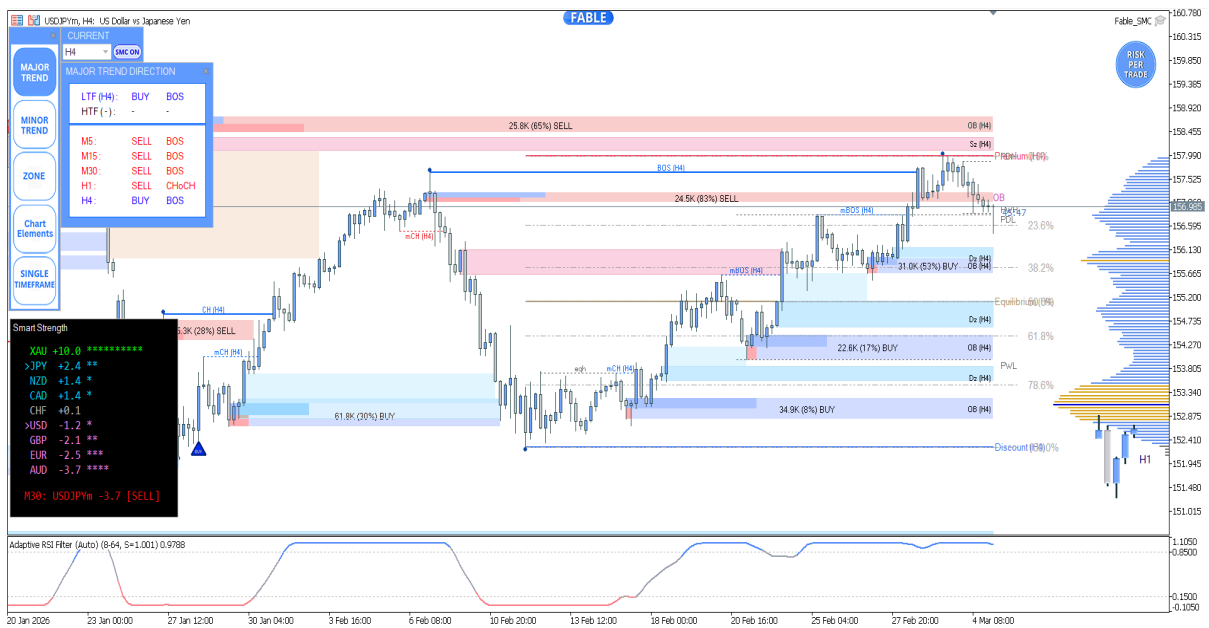
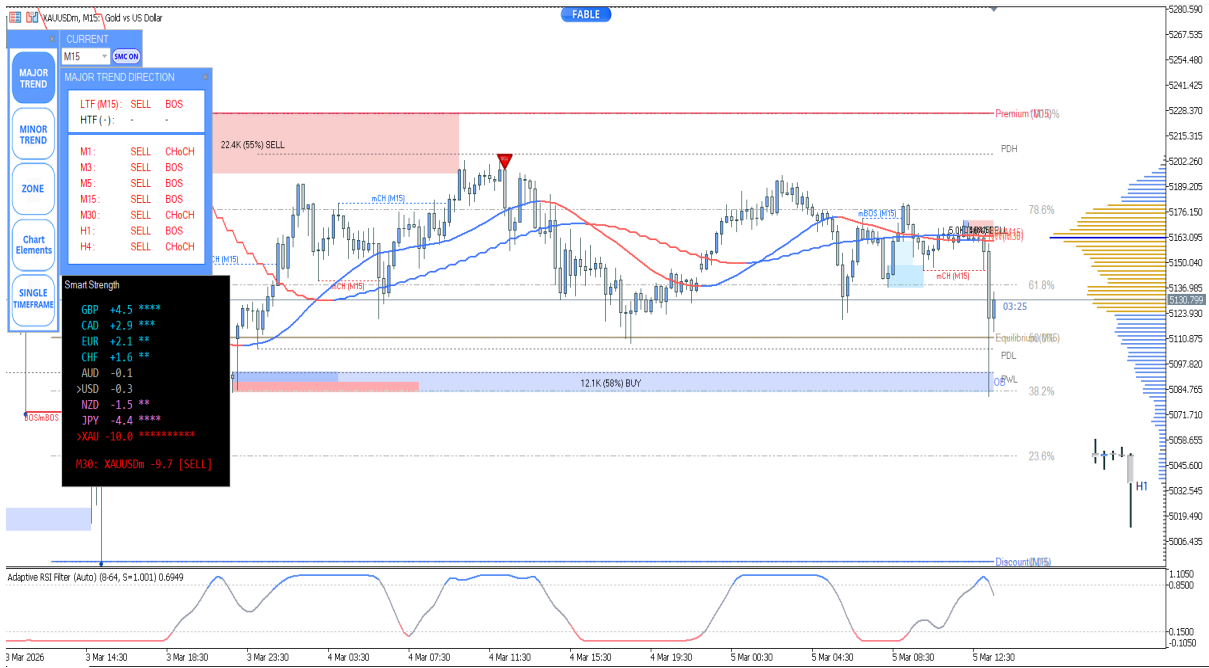


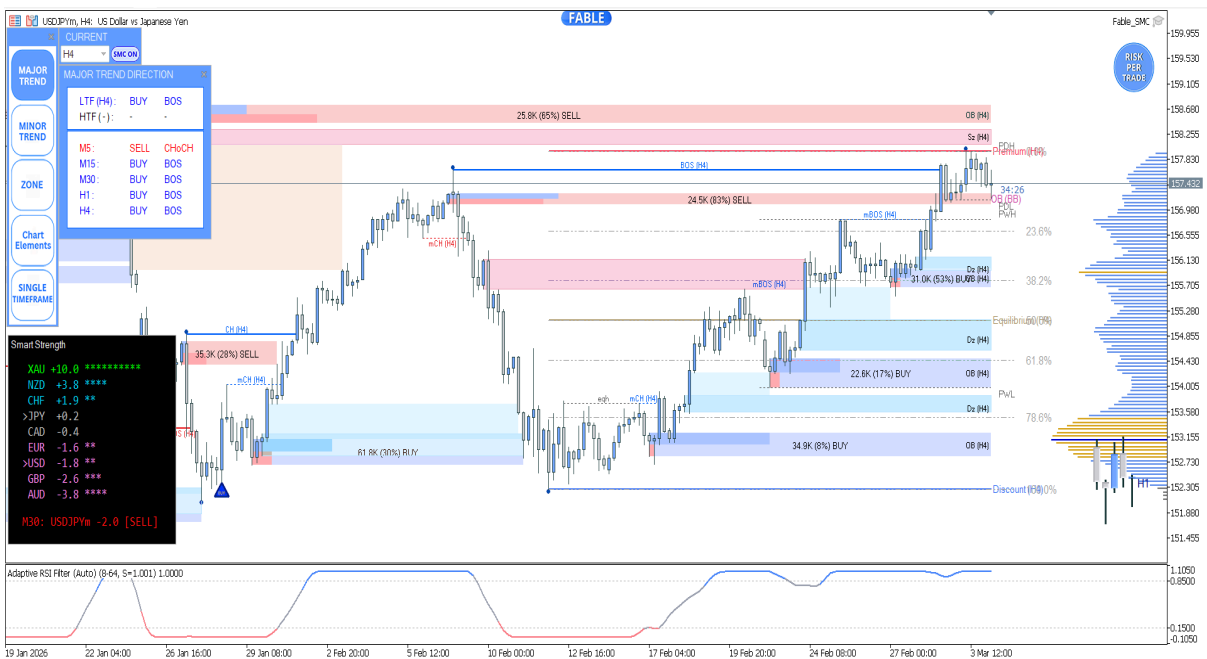
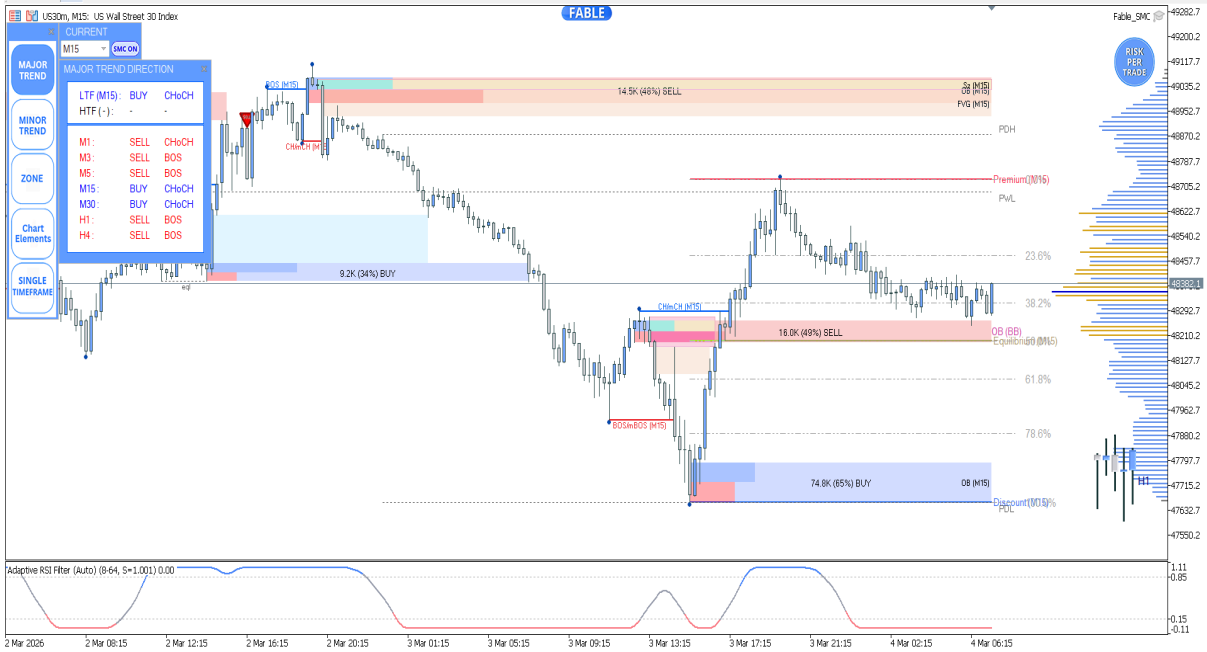


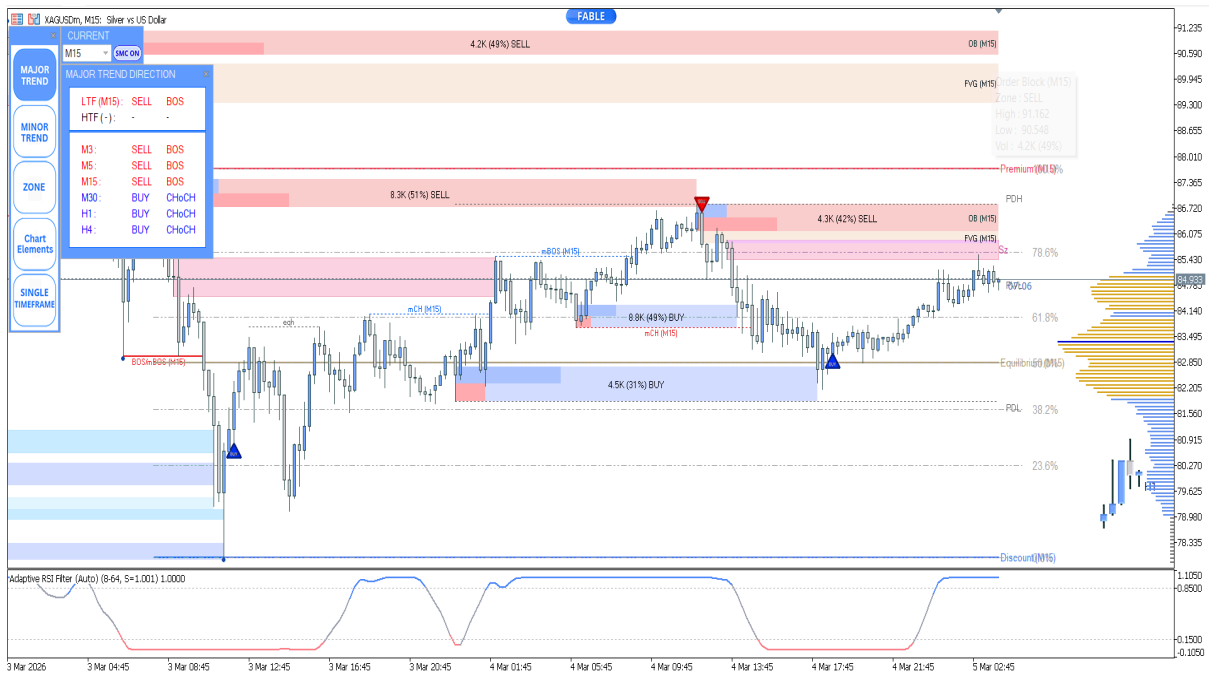
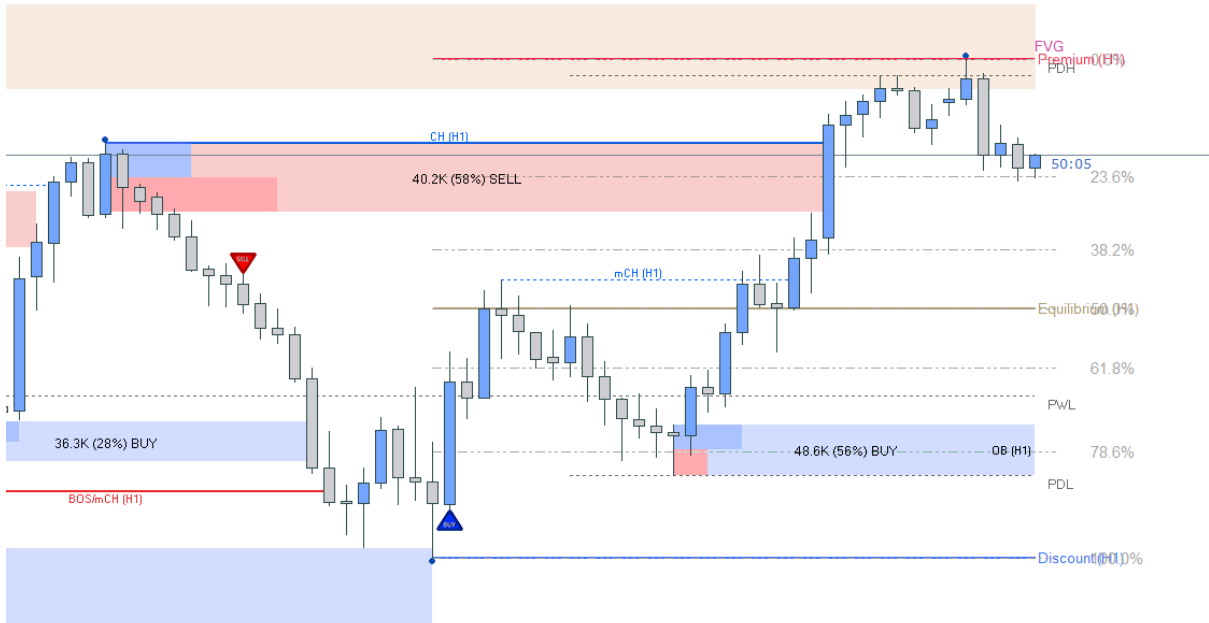


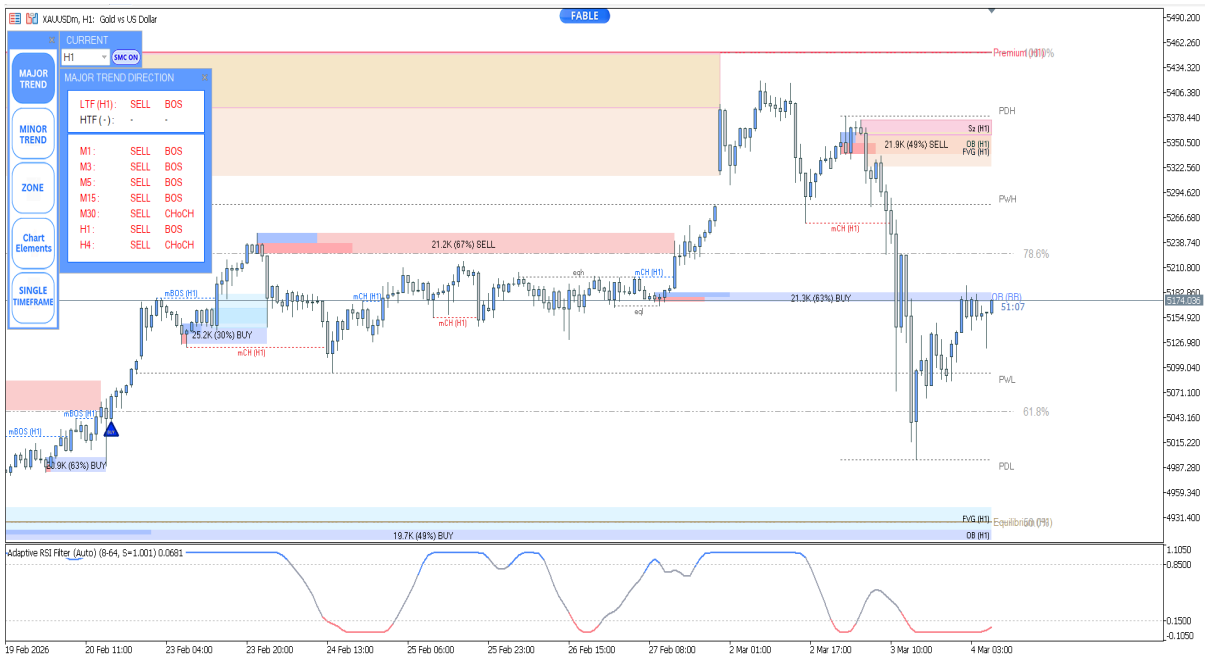
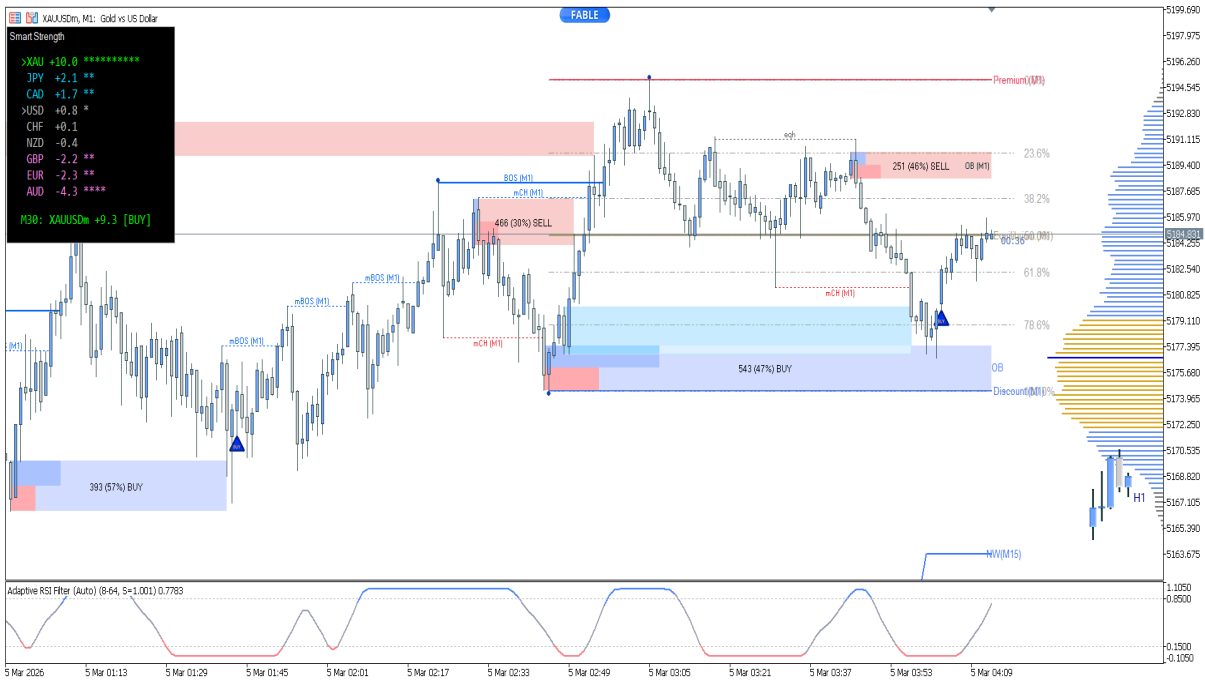


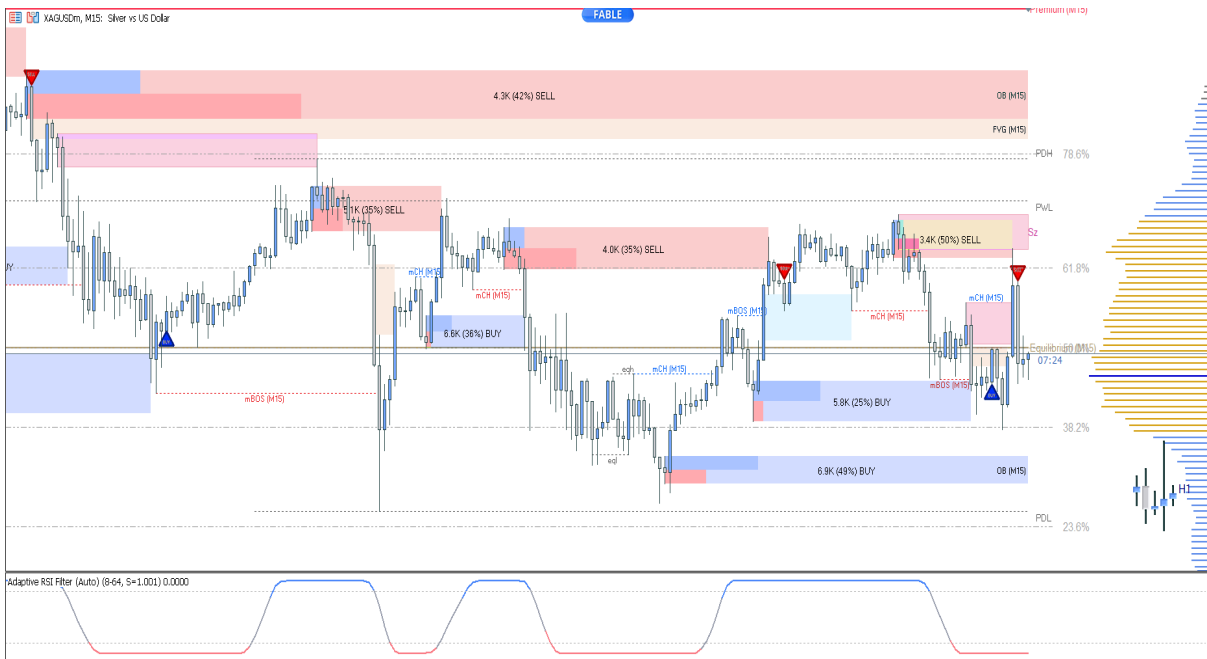
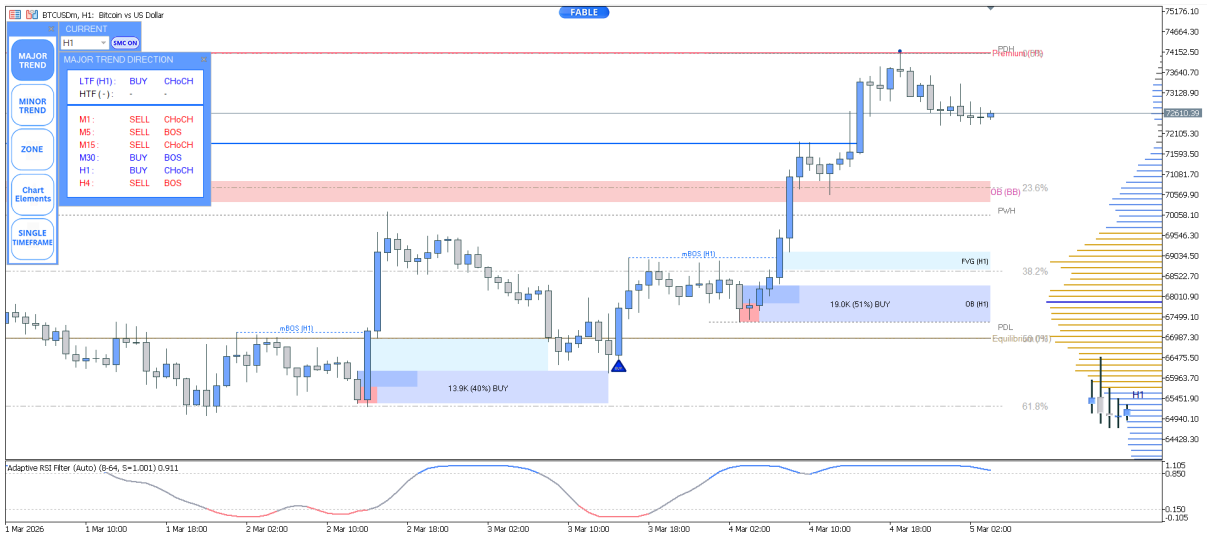














🔗 For a more confident decision, we recommend watching the indicator working in real-time on our YouTube channel first.

📺 Join Us Now for Real-Time Forward Testing : [Fable Edge](#)

<https://www.youtube.com/@FableEdge>

Important Warning ⚠️

❌ **Do not trust** Please do not trust any invitations to join groups via Telegram, Instagram, or any other channels that request payment or attempt to obtain financial benefits while claiming to be associated with us.