

TITLE (ENGLISH)

Author^{1,2}, Author¹ & Author² (Written full name without title)

Affiliation of the author's institution name, size 10 pt with single line spacing
*email

ABSTRACT

Abstract written in 1 paragraph and not more than 250 words. The abstract contains the introduction, objectives, methods, results, and conclusions without citing references. Written with 10 pt of font size and single line spacing.

Keywords: blood glucose, cat, gene mutation, ovariohysterectomy, PDX-1 gene

INTRODUCTION

is written with 12 pt of font, 1.15 spaces, and briefly explains the background, stating the current situation, conditions, and objectives. The introduction should be written efficiently and supported by references.

MATERIALS AND METHODS

1. Written in 12 pt font with 1.15 spaces
2. It should be clearly written and contain a complete description of the information about the research procedure. The condition of the animal (breed, sex, age, weight, and weighing conditions [e.g., with or without restrictions on feed and (or) water]) needs to be explained clearly and completely.
3. Authors must ensure that research involving animals has a statement sheet containing the name of the ethical authority and registration number that is valid.

4. The author must clearly state the commercial information of the products and equipment used in the research, such as commercial name, product/equipment specifications, city, and country.
5. Statistical methods must be used following the research data obtained.

RESULTS AND DISCUSSION

1. Data must be displayed in tables or figures according to the format (not in the form of screenshots).
2. Paragraphs should explain tabular data, but numbers should not be repeated too often in paragraphs. Discussion should be consistent and interpret the research results by explaining and providing summaries supported by appropriate literature. The content of the discussion must show relevance to the results obtained.

CONCLUSION

Should be written briefly in one paragraph, summarize the research

objectives obtained, and conclude the research.

ACKNOWLEDGEMENT

(optional) must be given to the person or institution assisting the research

REFERENCES

- Adler, Ben, and Eric Klaasen. 2015. "Recent Advances in Canine Leptospirosis: Focus on Vaccine Development." *Veterinary Medicine: Research and Reports* 6:245–60. doi: 10.2147/VMRR.S59521.
- Greenlee, Justin J., David P. Alt, Carole A. Bolin, Richard L. Zuerner, and Claire B. Andreasen. 2005. "Experimental Canine Leptospirosis Caused by *Leptospira Interrogans* Serovars Pomona and Bratislava." *American Journal of Veterinary Research* 66(10):1816–22. doi: 10.2460/ajvr.2005.66.1816.
- Greene, C. E. 2012. *Infectious Diseases of the Dog and Cat*. 4th ed. St. Louis, Missouri, USA: Saunders Elsevier Inc.
- Munang'andu, H. M., S. Mutoloki, and Ø. Evensen. 2016. "Prevention and Control of Viral Diseases in Aquaculture." in *Aquaculture Virology*, edited by F. S. B. Kibenange and M. G. Godoy. London: Academic Press.

TABLES, FIGURES and GRAPHICS

Tables

1. The title must be clear and concise, placed above the table with a size of 10 pt and one-line spacing.
2. Table captions are placed below the table.
3. Tables without vertical lines and inside horizontal borders. It is centrally placed.
4. The table size is not more than 8 cm. If the table is more than 8 cm, the table rule can be changed to a one-column page layout.
5. Numbering Tables are arranged sequentially and clearly explained.
6. This is an example of a Table.

Table 1 SOD activity of kidney rat (*Rattus norvegicus*).

No	Groups	Value (U/mL)
1	Control	97,05 ± 1,52 ^d
2	Diabetic	40,90 ± 5,45 ^a
3	Therapy 1	74,86 ± 0,87 ^b
4	Therapy 2	89,30 ± 0,43 ^c
5	Therapy 3	94,38 ± 1,09 ^{cd}

Description : The different notation indicates a significantly different effect (p<0.05).

Table 2 Mean body morphometry of broiler chickens fed with red dragon fruit (*Hylocereus polyhizus* (F.A.C. Weber) Britton & Rose) infused water for 21 days

Age (days)	Variable (cm)	Treatment				
		P0 (0%)	P1 (0,25%)	P2 (0,5%)	P3 (1%)	P4 (2%)
21	TA	23,717±0,912 ^{ns}	24,311±0,396 ^{ns}	23,819±0,649 ^{ns}	23,733±0,854 ^{ns}	24,119±0,854 ^{ns}
	TB	15,190±0,602 ^a	15,720±0,461 ^{ab}	15,314±0,547 ^a	15,790±0,397 ^{ab}	16,180±0,654 ^b
	PK	3,949±0,069 ^a	4,0143±0,032 ^b	4,015±0,049 ^b	4,000±0,044 ^{ab}	4,039±0,041 ^b
	LK	2,957±0,067 ^a	2,979±0,050 ^a	2,990±0,032 ^a	2,986±0,041 ^a	3,073±0,024 ^b
	PB	14,686±0,450 ^{ab}	14,486±0,414 ^a	14,420±0,335 ^a	14,377±0,341 ^a	14,947±0,310 ^b
	LB	7,957±0,317 ^{ns}	8,104±0,134 ^{ns}	8,056±0,218 ^{ns}	7,914±0,189 ^{ns}	8,144±0,136 ^{ns}
	LD	25,331±1,097 ^a	25,201±1,087 ^a	24,863±0,598 ^a	25,390±0,880 ^a	26,743±0,880 ^b
	PS	12,120±0,315 ^a	12,357±0,377 ^{ab}	12,406±0,175 ^{ab}	12,624±0,359 ^{bc}	12,867±0,485 ^c
	PL	6,841±0,084 ^a	7,037±0,079 ^{bc}	6,804±0,209 ^a	6,919±0,095 ^{ab}	7,130±0,149 ^c
	PBT	5,260±0,125 ^a	5,366±0,159 ^{ab}	5,284±0,085 ^a	5,366±0,115 ^{ab}	5,507±0,126 ^b
	PP	7,110±0,130 ^{ns}	7,259±0,261 ^{ns}	7,277±0,262 ^{ns}	7,356±0,189 ^{ns}	7,456±0,234 ^{ns}

Description : P0 : mineral water ; P1 : IWBNM 0,25% ; P2 : IWBNM 0,5% ; P3 : IWBNM 1% ; P4 : IWBNM 2%. The difference in number notation followed by different letters a-c in the same line indicates a significantly different effect (P<0.05). *IWBNM (red dragon fruit infused water). TA (chicken height), TB (body height), PK (head length), LK (head width), PB (body length), LB (body width), LD (chest width), PS (wing length), PL (neck length), PBT (calf length), and PP (thigh length)

FIGURES

1. The title must be clear and concise, placed under the figure with a point size of 10 pt and one of the line spacings. It is centrally placed. The figure size is at least 300 dpi and not more than 8 cm. If the image is more than 8 cm, the image rule can be changed to 1 column of the page layout.
2. If the personal photographs are yours and they haven't been published elsewhere, "no citation or copyright attribution is required in the figure note.
3. If the photographs were taken by someone else, you'll need to obtain copyright permission to use them in your work, note the permissions in the figure notes, and reference the sources of the photographs
4. This is an example of Figures.

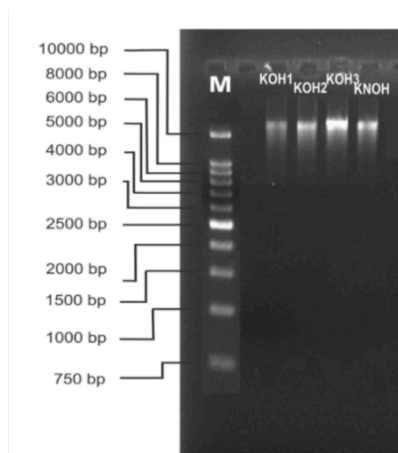


Figure 1 Total DNA Electrophoresis (1% Agarose)

Description : M : Marker (1 kb), KOH (Ovari hysterectomy Cat), KNOH (Non-Ovari hysterectomy Cat), KOH1: Ayam, KOH2: Mui, KOH3: MJ, KNOH: Bodo

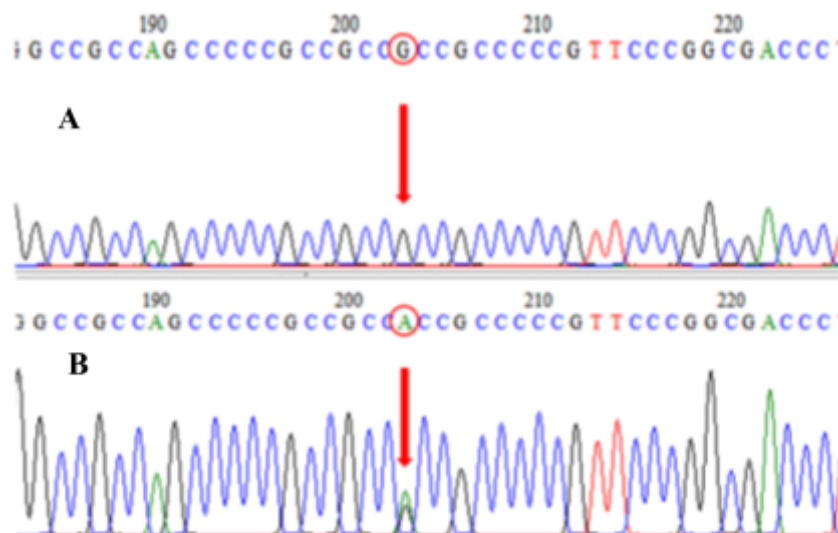


Figure 2 Electroferogram of KOH2 sample sequences (Cat Ovariohysterectomy, Cat Mui)
Description : A. Normal sequence electropherogram; B. Electroferogram of KOH2 sample

GRAPHICS

1. The title must be clear and concise, placed below the graphic with a font size of 10 pt and one of line spacing. It is centrally placed. The chart size is not more than 8 cm. If the graph is more than 8 cm, the graph rules can be changed to 1 column of the page layout.
2. Bar charts are made in 2 dimensions, and each variable must have a name and unit. For the line graph, use a line thickness of 1.5 pt. If multiple lines are distinguished, use solid, long-dash, short-dash, and dotted lines; avoid using gray or shaded lines. Please use the following symbols to identify curves and data points :
 - a. : □, ■, ○, ▲, △, ◇, ◆, +, and ×.
3. This is an example of Graphics.

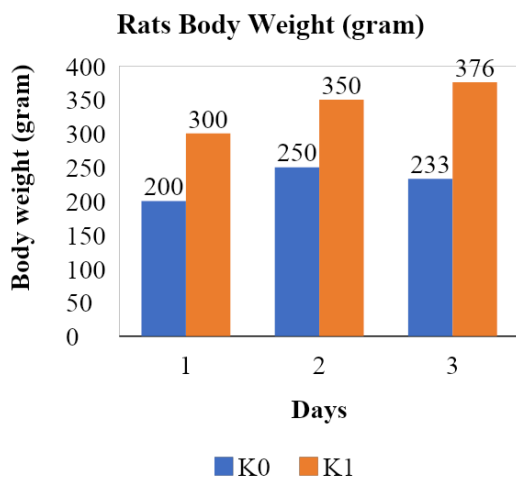


Figure 1 Rats body weight by treatment day
Description : K0 (Control); K1 (Treatment with casein 750 mg)

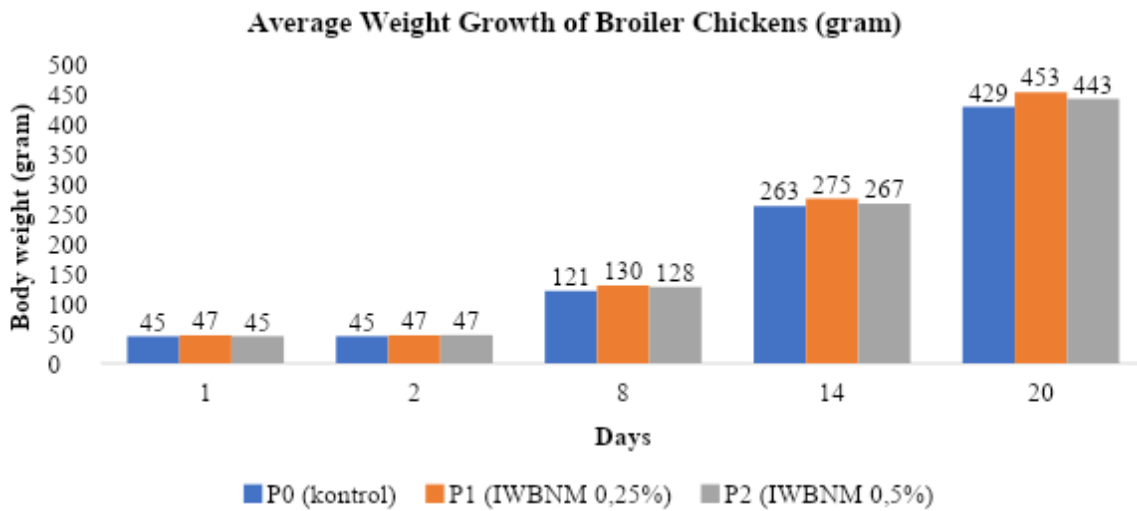


Figure 2 The average weight growth of broiler chickens from the age of 2 days to 21 days
Description : treatment with infused water of red dragon fruit (*Hylocereus polyhizus* (F.A.C. Weber) Britton & Rose) with a concentration of P0 : 0% ; P1 : IWBNM 0,25% ; P2 : IWBNM 0,5% ;

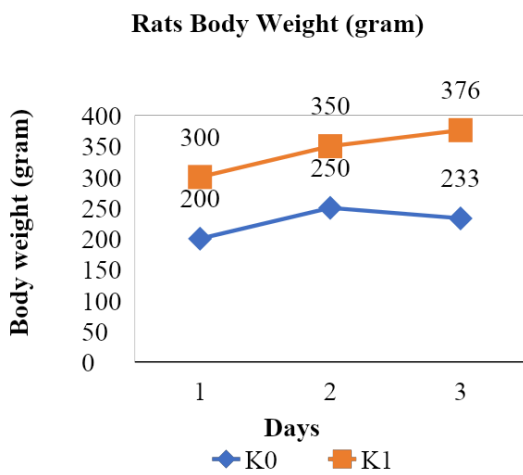


Figure 3 Rats body weight by treatment day
Description : K0 (Control); K1 (Treatment with casein 750 mg)

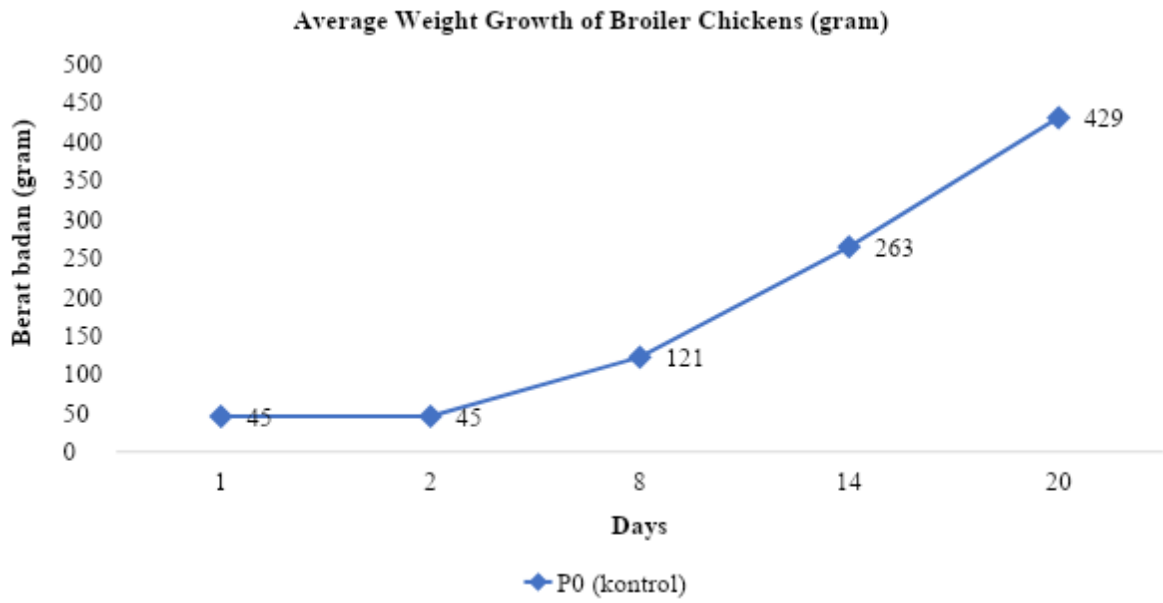


Figure 4 The average weight growth of broiler chickens from the age of 2 days to 21 days
Description : treatment with infused water of red dragon fruit (*Hylocereus polyhizus* (F.A.C. Weber) Britton & Rose) with a concentration of P0 : 0%