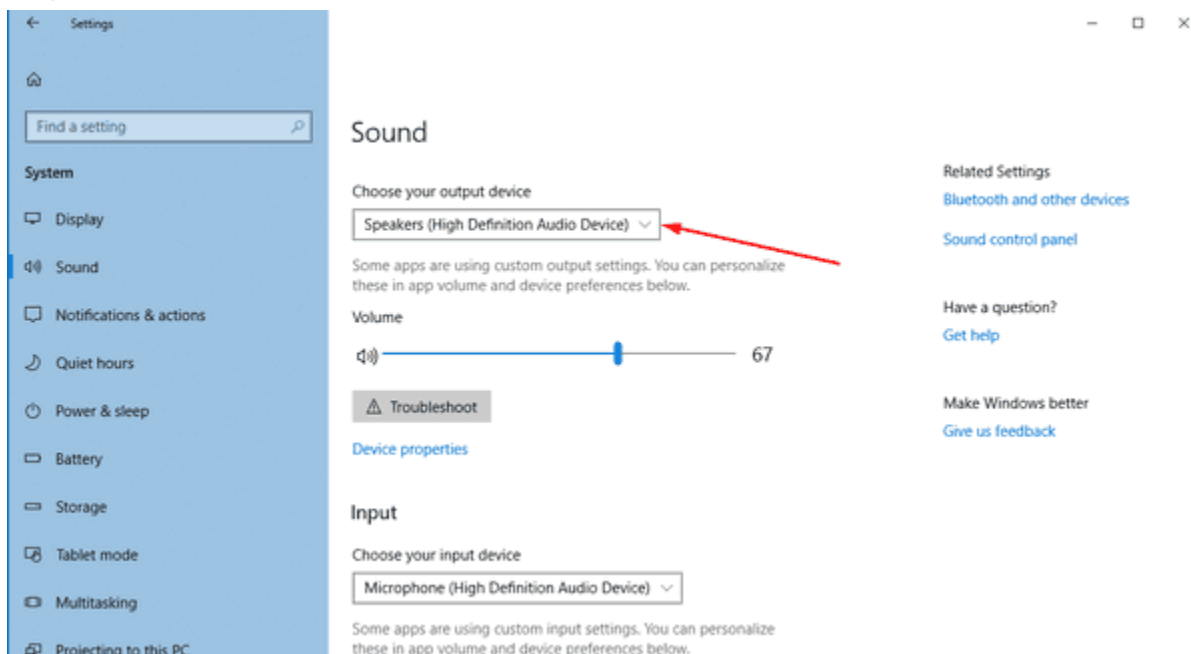


Change Audio Output in Windows 10

1. Click on the Sound icon at the bottom right of your screen.
2. Click the arrow next to the Speaker option.
3. You will see the options available for audio output. Click the one that you need based on what you are connected to. (...
4. Sound should start playing out of the correct device.

Change Default Audio Device in Windows 10

1. Open [Settings](#).
2. Go to System – Sound.
3. On the right, select the required device in the drop down list *Choose your output device*.



4. You might need to restart some apps like audio players to make them read the changes you made.

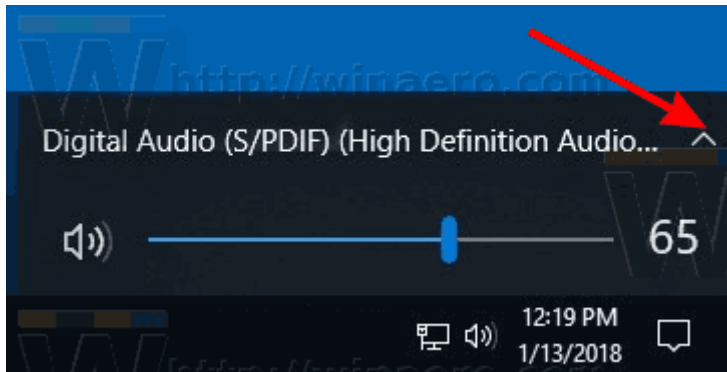
You are done.

Set the Default Audio Device with the Sound flyout

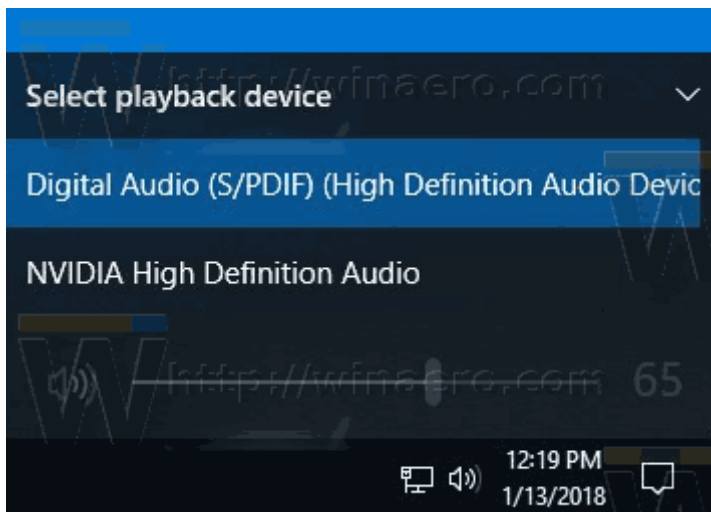
Another new option starting with Windows 10 Anniversary Update is the ability to choose the default audio device right from the sound volume flyout. Here is how.

To change the Default Audio Device, do the following.

1. Click on the sound volume icon in the system tray.
2. Click on the up arrow in the sound flyout.



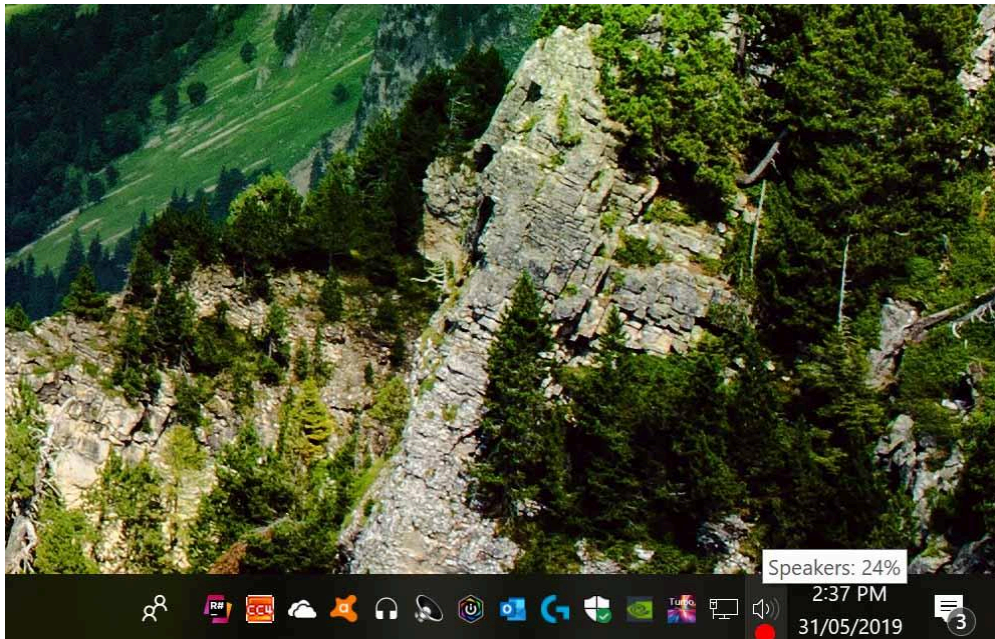
3. Choose the desired audio device from the list.



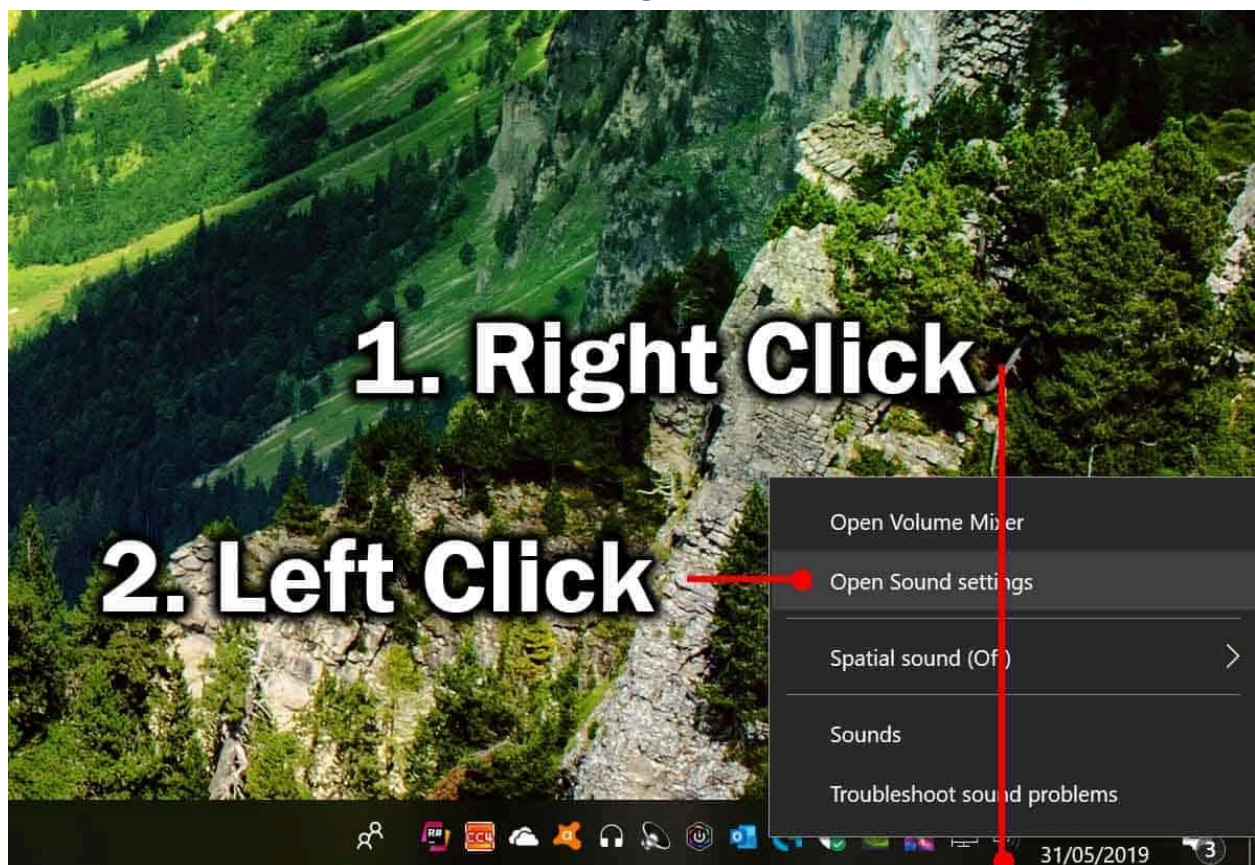
4. Restart your audio apps if required.

Steps on how to change the audio output

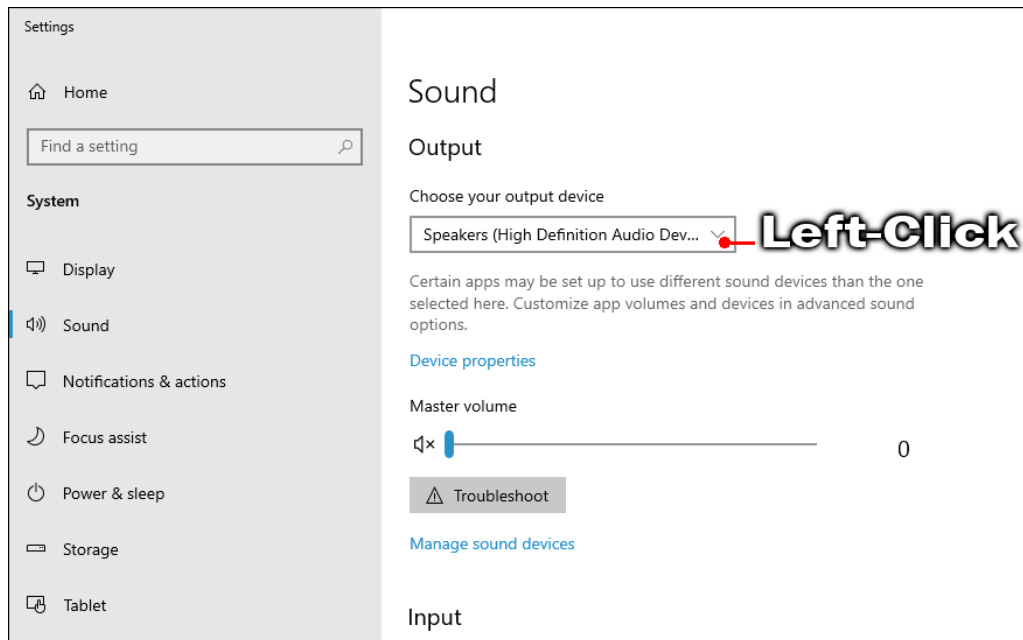
1. Open the Sound Settings window



Right-click on the speaker symbol in your system tray area near the time and date. Left-click on the 'Open Sound settings' menu option.

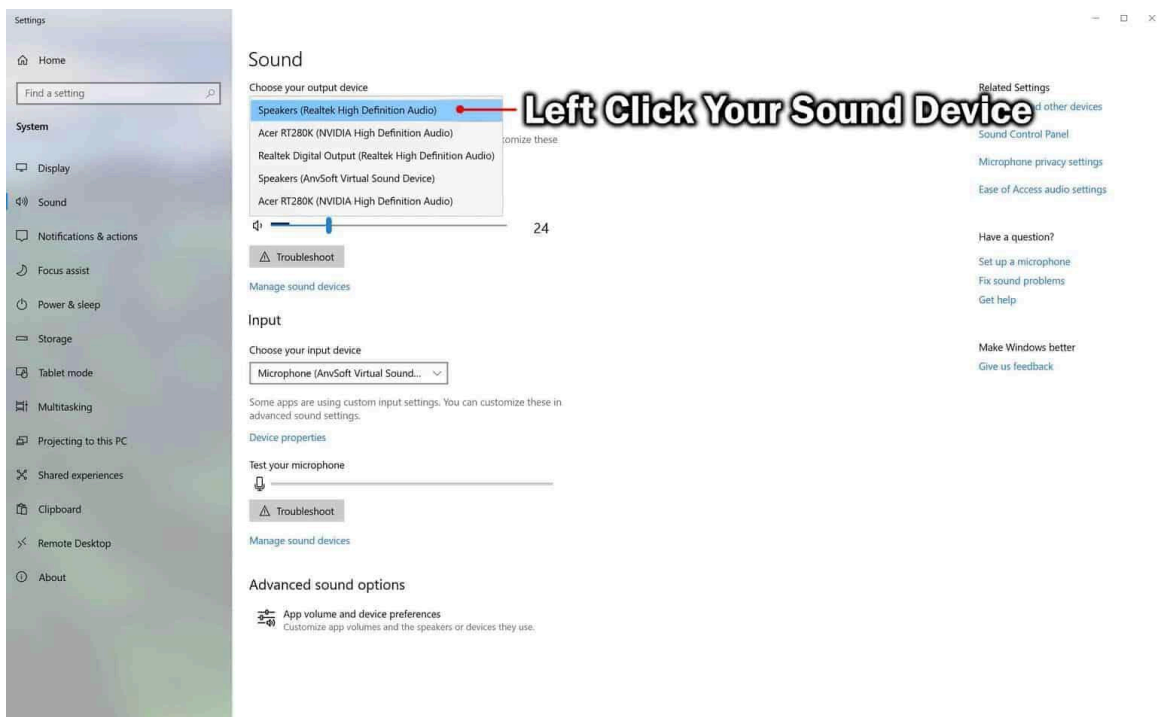


2. Open the list of devices in the drop-down box



Left-click on the arrow on the right side of the drop-down box under ‘Choose your output device’.

3. Select your device



Left-click on the device from the list that you wish to have your sound set to.

Changing audio output in the Control Panel

1. Open the Control Panel

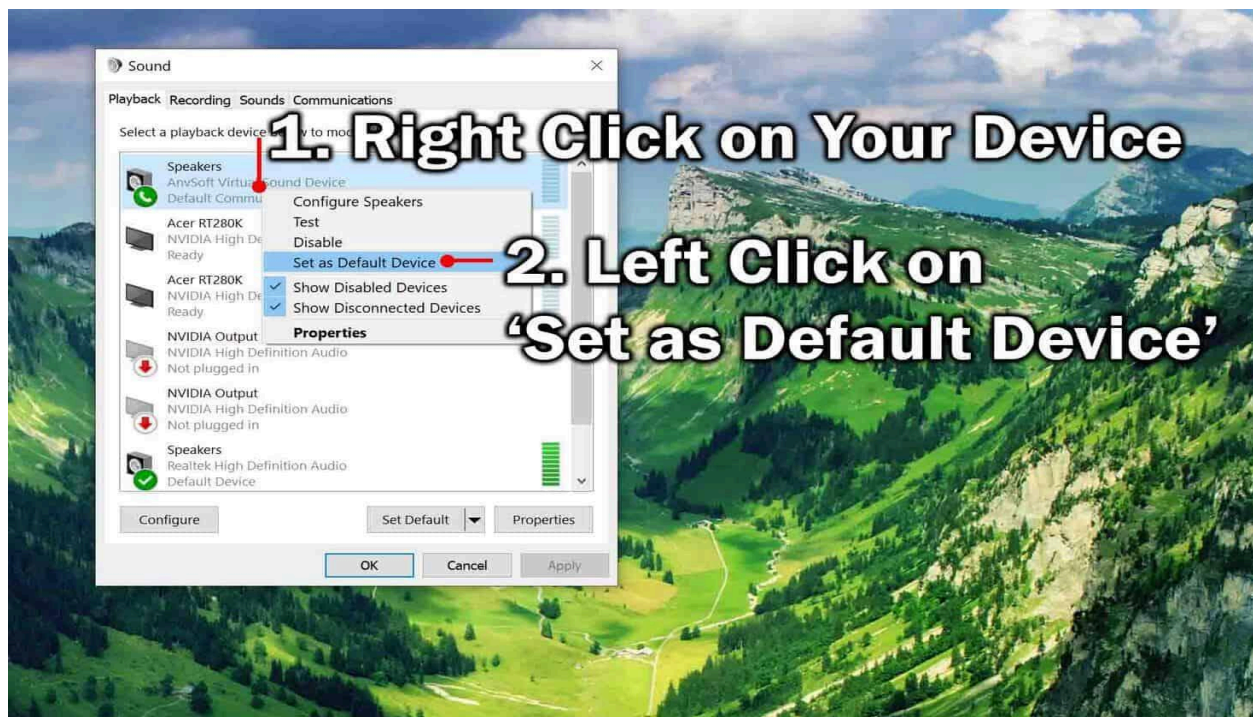
Open the Control Panel, if you are unsure how to open it, refer to our other article on [opening the Control Panel](#).

2. Open the Sound window



Type in 'sound' in the search bar in the top right corner in the Control Panel. Left-click on 'Sound'.

3. Select your default device



Right-click on the [device](#) you want as the default device, and from the [contextual menu](#), left-click on 'Set as default device'.

Click on the 'OK' button to save your setting.