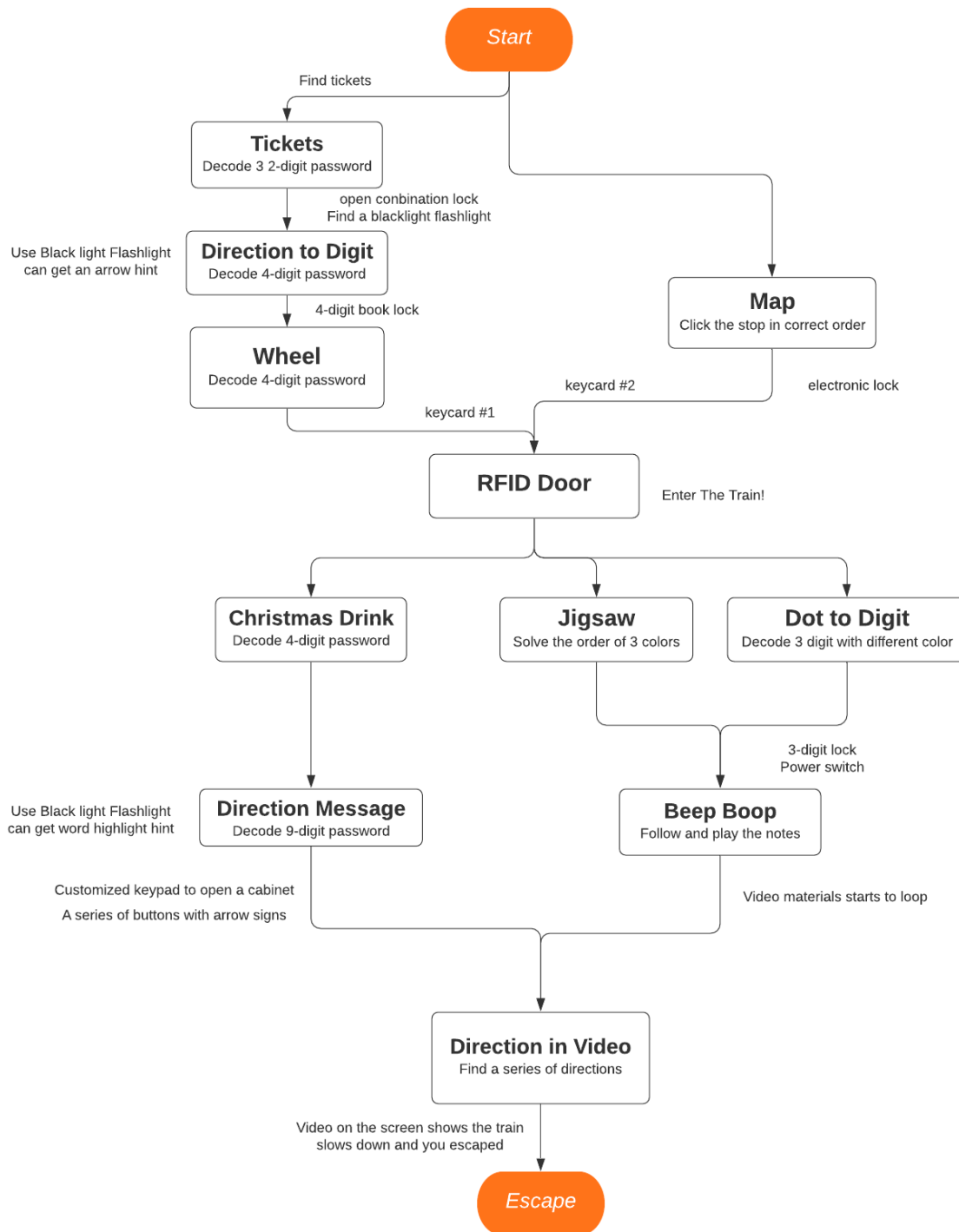


## Puzzle List

#	Puzzle Name	Room	Designer	Description
1	Tickets	(I) Platform	Alexis, Mikel	Decode 2 3-digit combination from the holes on tickets
2	Direction to Digit	(I) Platform	Zihan, Fangtai	Decode a 4-digit password from 4 direction matrix images
3	Wheel	(I) Platform	Max, Tim	Decode a 4-digit password from timetable and a wheel
4	Map	(I) Platform	Miquel, Webster	Click the stops in correct order
5	RFID door	(I) Platform	Mikel	Open the door by using 2 RFID keycard (in order)
6	Christmas Eve Drink	(II) Train	Andrew, Mckenna	Decode a 4-digit password from drink orders and drink containers
7	Jigsaw	(II) Train	Rosie	Decode a message by finishing the Jigsaw puzzle
8	Dot to Digit	(II) Train	Tian, Yingchen	Decode a 3-digit password from dot images
9	Direction message	(II) Train	Miquel, Webster	Decode a 9-digit password from a message
10	Beep Boop	(II) Train	Gaurav, Kar	Follow and play the corresponding notes
11	Direction	(II) Train	Max, Darren	Decode a series of direction from video footage

# Escape Room Puzzle Flowchart

Max Chen | November 14, 2021



## Material List

#	Name	Material	Lock
1	Tickets	<ul style="list-style-type: none"> <li>• Player's train ticket with a hole in a designated location (x 6)</li> <li>• Waldo's Wishlist (Letter-sized paper)</li> </ul>	3 2-digit combination lock (need instruction)
2	Direction to Digit	<ul style="list-style-type: none"> <li>• Blacklight reactive invisible ink pen</li> <li>• Acrylic paint</li> </ul>	3-digit lock
3	Wheel	<ul style="list-style-type: none"> <li>• Plywood</li> <li>• Acrylic paint? (for making markers on the board)</li> <li>• Printed timetable (Letter-sized paper) (on the wall)</li> </ul>	4-digit lock
4	Map	<ul style="list-style-type: none"> <li>• ATmega2560, wires, soldering equipment***</li> <li>• Buttons x 9, LED x 9</li> <li>• 3D printed triggers x 9 ***</li> <li>• plywood board (18" x 24 ") as base</li> <li>• Printed design paper</li> </ul>	Magnetic electric lock to a cabinet
5	RFID door	<ul style="list-style-type: none"> <li>• oRFID door lock</li> <li>• 2 keycards are needed to scan in succession</li> </ul>	RFID lock with 2 keycards
6	Christmas Eve Drink	<ul style="list-style-type: none"> <li>• Drinking order (Letter-sized paper)</li> <li>• Cup with label (x4)</li> </ul>	4-digit lock
7	Jigsaw	<ul style="list-style-type: none"> <li>• Wooden 9 piece Jigsaw puzzle, with hint written on the back</li> <li>• Acrylic paint (red, blue, yellow)</li> </ul>	3-digit lock
8	Dot to Digit	<ul style="list-style-type: none"> <li>• Acrylic paint (red, blue, yellow)</li> </ul>	
9	Direction message	<ul style="list-style-type: none"> <li>• Message (Letter-sized paper)</li> </ul>	Customized keypad lock***
10	Beep Boop	<ul style="list-style-type: none"> <li>• Arduino, wires, soldering equipment</li> <li>• Buttons x 4, LED x 4</li> <li>• 3D printed triggers x 4 ***</li> <li>• A Speaker?</li> </ul>	Magnetic electric lock to a cabinet
11	Direction	<ul style="list-style-type: none"> <li>• Arduino, wires, soldering equipment</li> <li>• Buttons x 5, computer(s), monitors, speakers</li> <li>• Video footages</li> <li>• programming</li> </ul>	

<https://docs.google.com/spreadsheets/d/1qkNGHoJxsRIPewMHefjT--A3BmGSIX2BhiycLZfE4F8/edit?usp=sharing>

## 1. Tickets

This one is connected to the story in the lobby.

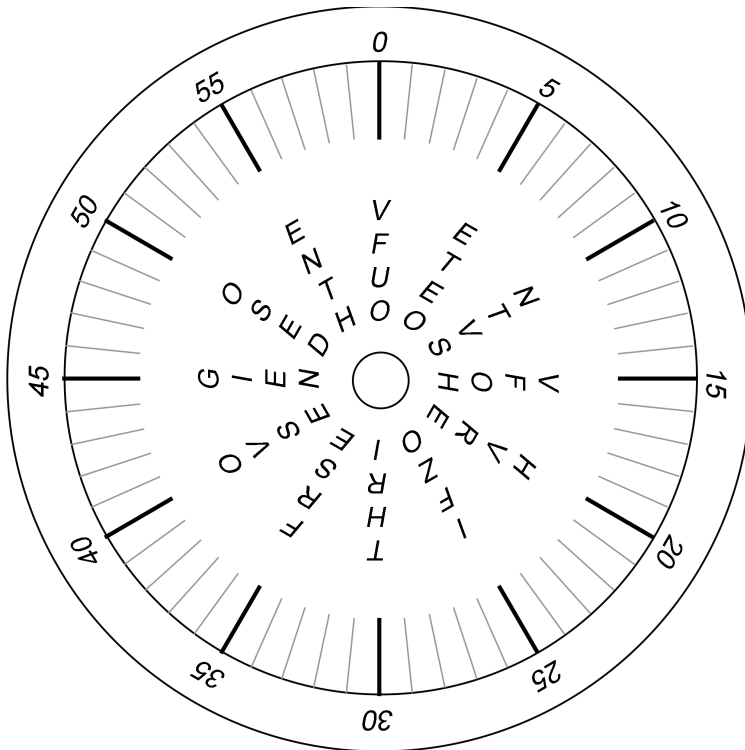
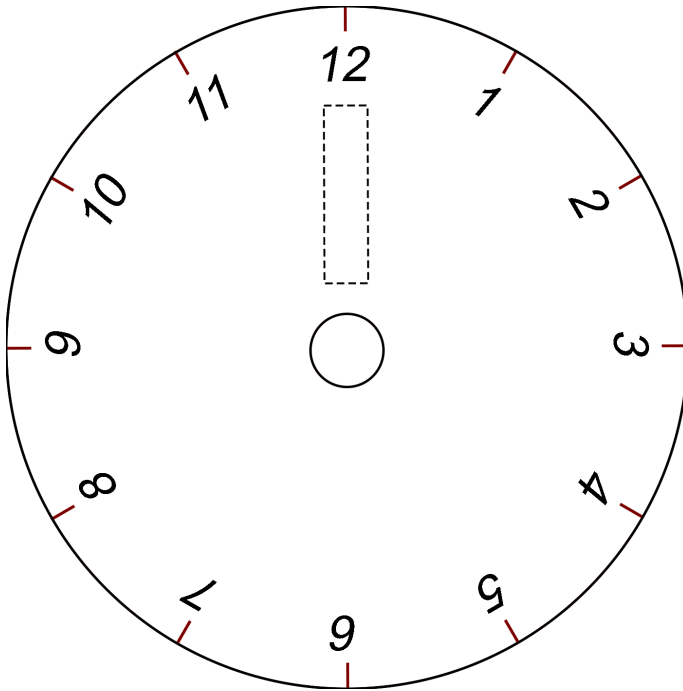
## 2. Direction to Digit

Printed on paper

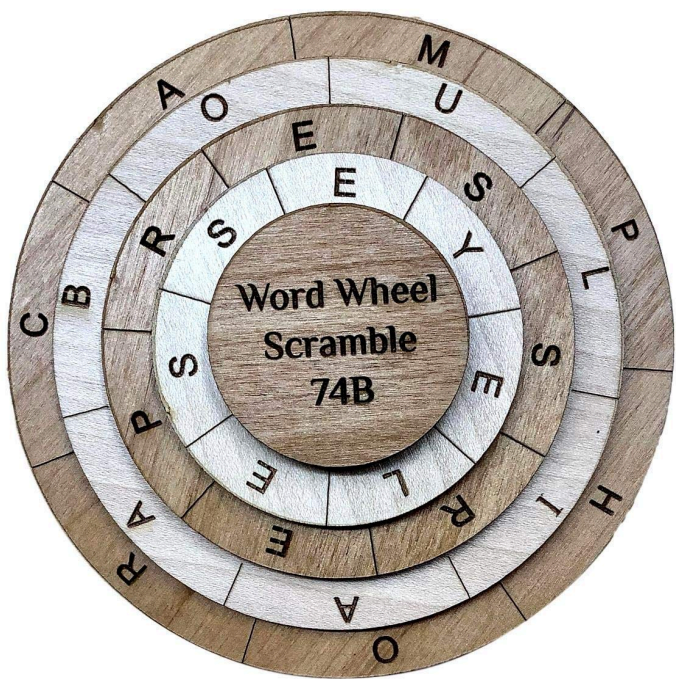
<div>→</div> <div>R R R D</div> <div>R U U D</div> <div>D L L L</div> <div>D R L U</div> <div>R R R R</div>	<div>←</div> <div>D L L L</div> <div>D L D L</div> <div>R R R D</div> <div>L L L D</div> <div>L L L L</div>	<div>←</div> <div>D L L L</div> <div>D R L D</div> <div>D L L L</div> <div>D L D U</div> <div>R R R U</div>	<div>→</div> <div>R R R D</div> <div>U L R D</div> <div>D D L D</div> <div>R L U D</div> <div>L U U D</div>
---	---	---	---

2 5 6 7

### 3. Wheel



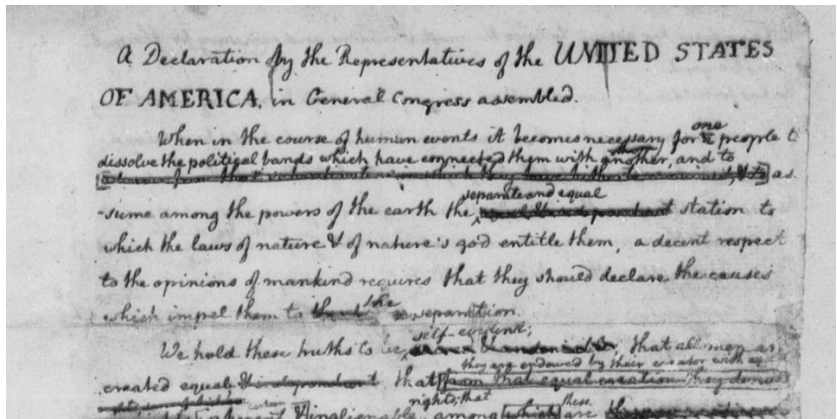
Design reference:



Handwritten message:

After working on the same train for many years, I still find it difficult to remember the four-number passcode. I made this spinning wheel to help me remember the passcode.

Design reference:



Timetable

Stops	# 502	# 593	# 525	# 527
-------	-------	-------	-------	-------

			6: 35	
			7: 00	
			7: 20	
			8: 00	

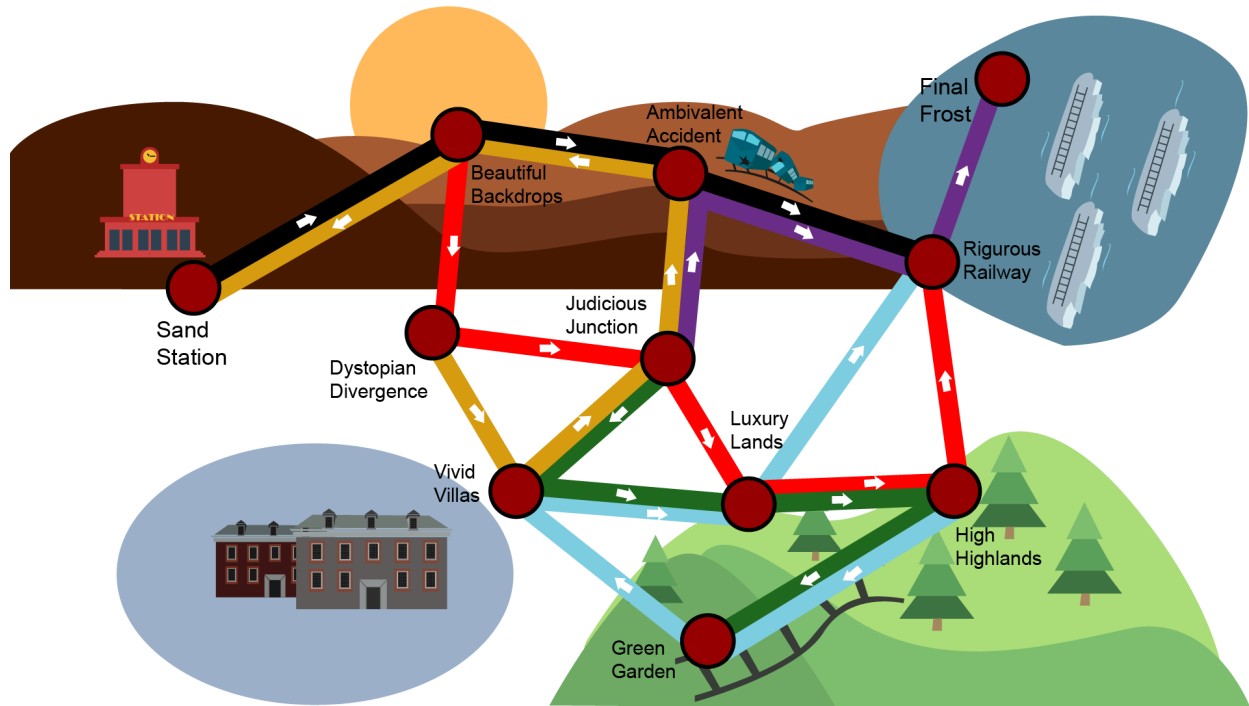
Design reference:



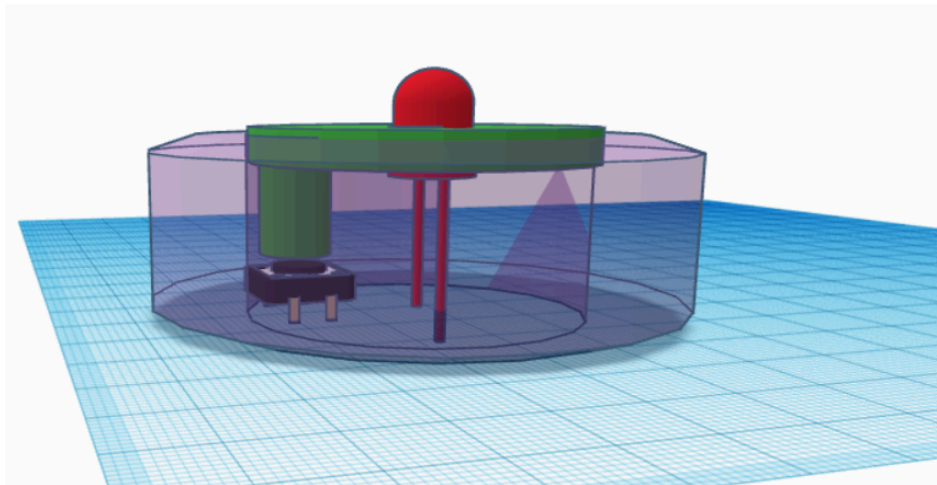
#### 4. Map

Draw map on the wall

Need programing. Players need to trigger the light in the correct order.



Here you can see a possible standalone part of what we did, a map with different stations connected with different train lines and each line only going in one direction. The instructions (which would have to be combined with flavor text) is that starting at Sand Station, the player has to get to Final Frost, having to go through Green Garden to do so (to pick an important mguffin or any other excuse). Their ticket only allows two "jumps" per colored line in the whole itinerary, having then to figure out how to commute.





## 5. RFID Door

(The RFID lock is bought already)

2 keycards scanned in succession to unlock the doors

## 6. Christmas Drink

(McKenna will make the prop)

Discovery: Players find drink orders on a whiteboard with notes written on them, drink containers with BS nutrition facts.

Decode: One drink in each order will be underlined, the order of the drink will be the number next to it, note on the side will indicate which nutritional fact to look at.

Execute: Enter the code in lock. 3 - 8 - 4 - 2

Props: 4 drinks - cocoa , cider, eggnog (nog), and peppermint tea (tea) w/ nutrition facts

### Orders:

- Order 1: 2 cider, 2 cocoa, 4 tea, 1 nog; *Deja vu... I saw this order in my dream last night*
- Order 2: 3 cocoa, 2 cider, 2 nog, 1 tea; *I think one of them complained of a ringing in their ear.*
- Order 3: 3 nog, 1 tea; *I hear this one's the Sugarplum Fairy's favorite...*
- Order 4: 2 cocoa, 1 nog, 4 cider; *They mentioned they had just met Santa himself!*
- Order 5: 3 nog, 4 cocoa, 4 cider; *These guys won't be feeling joyful in the morning*

## Nutrition Facts

**Serving size** 1 cup

Candy Canes	6 sticks
Cozy Feelings	3 evenings
Candles	5 flames
Button Nose	1 snowman
Silver Bells	3 cities
Starlight	4 nights
Holly	6 berries

## Nutrition Facts

**Serving size** 1 cup

Eggs	5 dozen
Drunk Grandma	1 reindeer
Fresh Snow	9 sprinkles
Glitter	2 packets
Fairy Kisses	4 smooches
Chestnuts	5 roasts
Jingles	7 bells

## Nutrition Facts

**Serving size** 1 cup

Apples	3 baskets
Cinnamon	7 mouthfuls
Winter Wishes	1 dash
Happy Memories	1 lifetime
Holiday Spirit	infinite
Joy (to the world)	2 songs
Gifted Birds	too many

## Nutrition Facts

**Serving size** 1 cup

Chocolate	5 handfuls
Smiles	3 helpings
Christmas Cheer	1 dash
Warm Hugs	4 best friends
Fuzzy Feelings	infinite
Hope	1 Christmas morning
Sugarplum Dreams	8 visions

## Christmas Eve Drink Orders

### Car 7, Table 1

2 cider

2 cocoa Deja vu... I saw this order in my  
4 tea dream last night...

1 nog

### Car 2, Table 9

3 cocoa

2 cider I think one of them complained of a  
2 nog ringing in their ear.

1 tea

### Car 5, Table 3

3 nog I hear this one's the Sugarplum Fairy's  
1 tea favorite...

### Car 4, Table 1

2 cocoa

1 nog They mentioned they had just met  
Santa himself!

4 cider

### Car 5, Table 2

3 nog

4 cocoa These guys won't be feeling joyful in the  
morning...

4 cider

## 7. Jigsaw

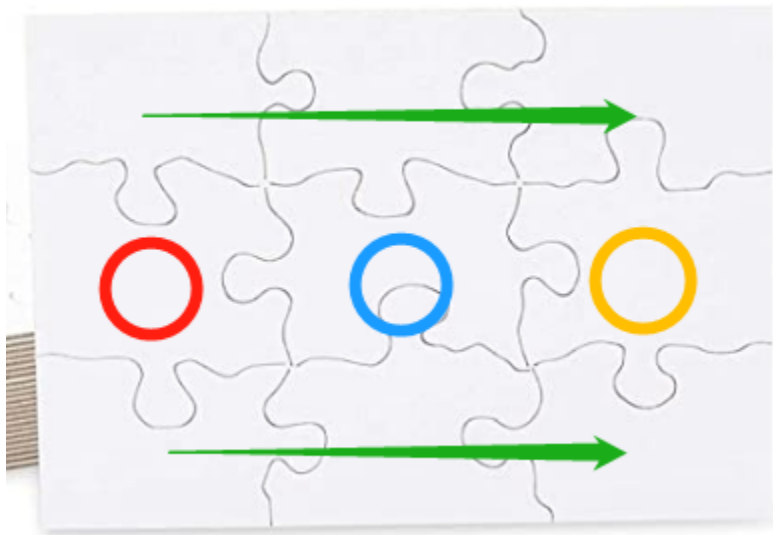
9 piece children jigsaw:

OR

Blank 9 piece jigsaw:

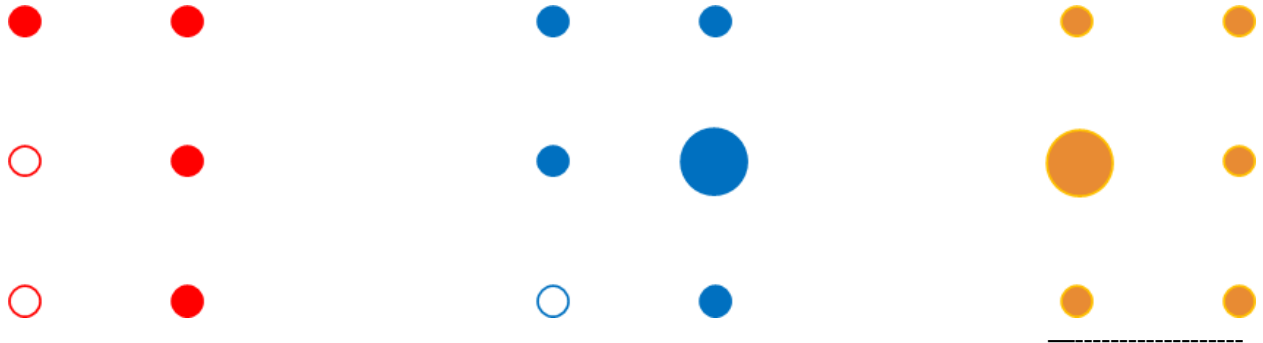
Gouache/Acrylic paint

On the back of the jigsaw puzzle, draw 3 dots in different color to indicate the order of colors.



## 8. Dot to Digit

Gouache/Acrylic paint



These three images are drawn on the wall / table / self surface in the platform scene.

The images represent 746.

## 9. Direction Message

(Blacklight Reactive Large Tip Invisible Ink Marker:

[https://www.amazon.com/Opticz-Blacklight-Reactive-Invisible-Marker/dp/B01F6IPK00/ref=sr\\_1\\_4?keywords=black+light+ink&qid=1636935147&sr=8-4](https://www.amazon.com/Opticz-Blacklight-Reactive-Invisible-Marker/dp/B01F6IPK00/ref=sr_1_4?keywords=black+light+ink&qid=1636935147&sr=8-4))

This can be used to highlight the numbers

A programmable keypad and magnetic cabinet lock:

[https://www.amazon.com/Electronic-Cabinet-Keyless-Intelligent-Password/dp/B07K1FV9TK/ref=sr\\_1\\_7?keywords=magnetic+cabinet+lock+keypad&qid=1636935434&sr=8-7](https://www.amazon.com/Electronic-Cabinet-Keyless-Intelligent-Password/dp/B07K1FV9TK/ref=sr_1_7?keywords=magnetic+cabinet+lock+keypad&qid=1636935434&sr=8-7)

Or DIY

Message:

I'm so sorry I'm not able to greet you at the station, but I've given you special instructions. I've Left them with a friend. It is Up to you Two find them. Last I heard they were Up to their ears in errands to run. So be sure the head Down to One of the Three (mGuffin) and find them. They are always going to the Nines when prepping for a long trip. And be sure to watch your Six, we don't want anyone getting suspicious about our special train ride

## 10. Direction

Basically it is a video game with arrow keys to control.



## 11. Beep Beep Boop Boop

Arduino game