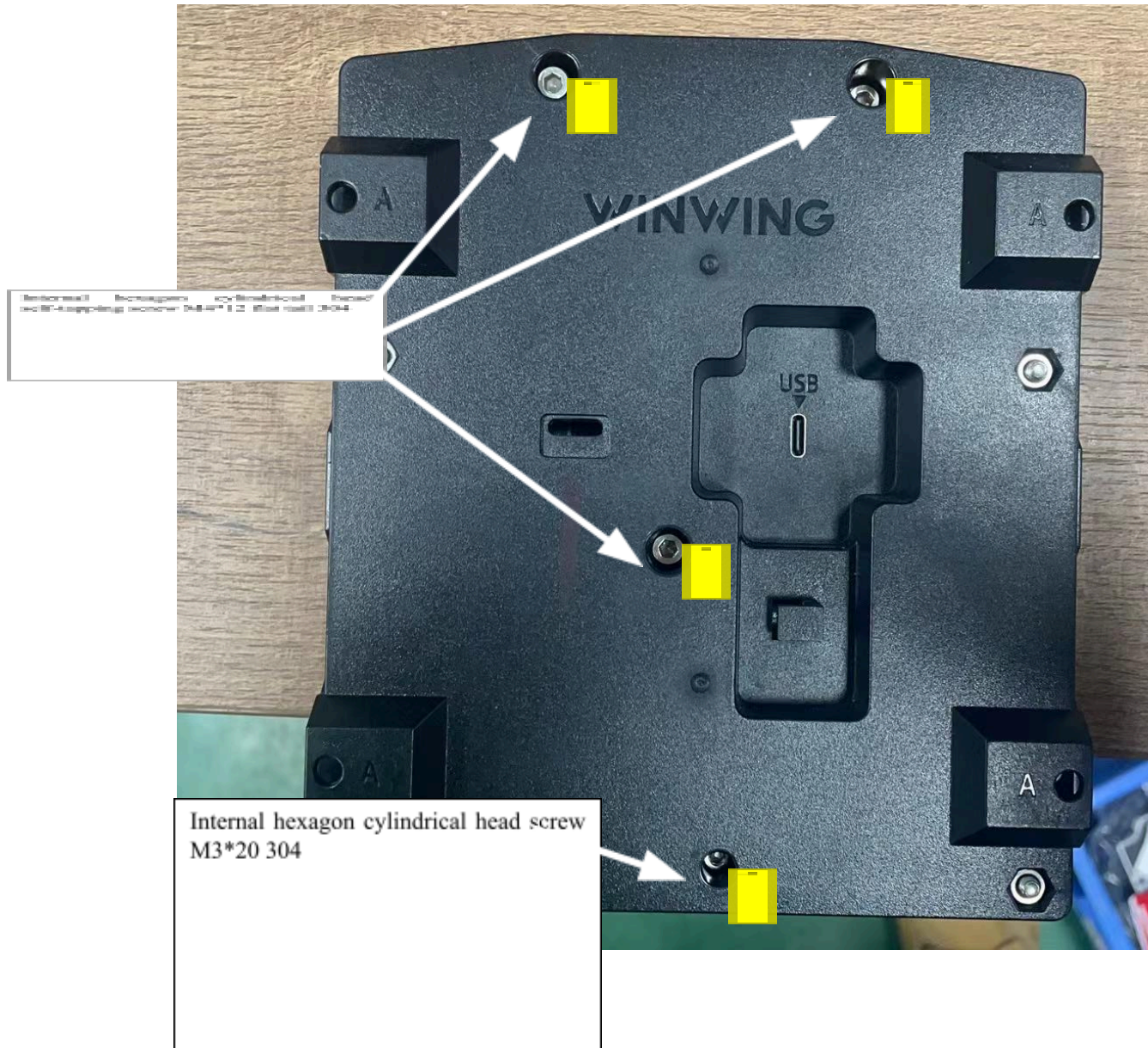


Replace the “ICP-5-way switch assembly 1”SOP

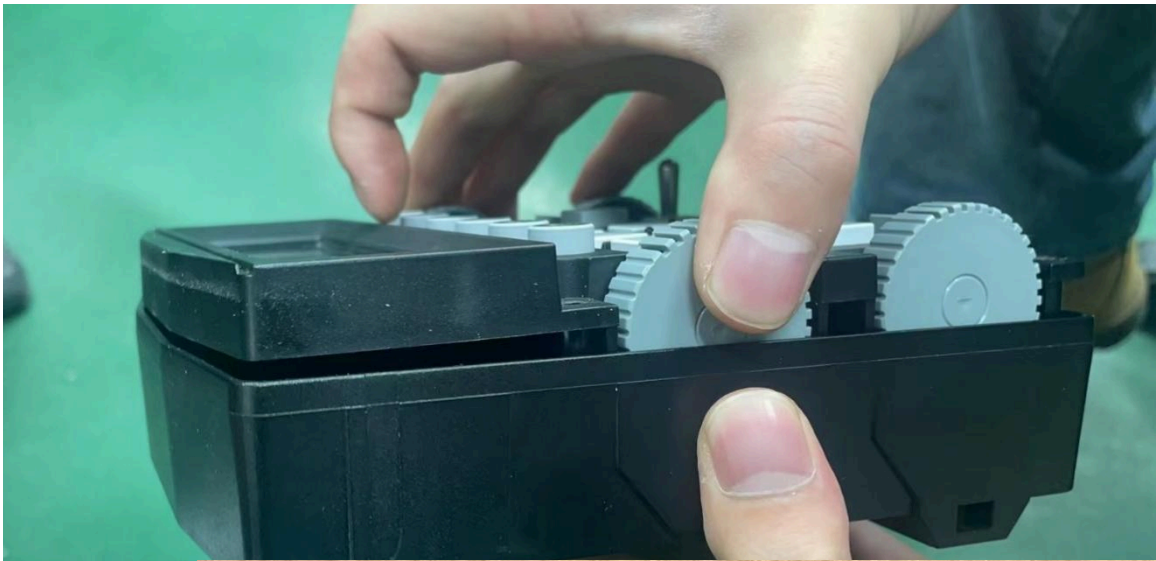
1.Remove the four screws on the back in order (keep the removed screws aside for later use).



2. After removing the screws on the back, flip the product to the front and remove the four screws on the front (be careful not to lose the four M4 nuts at the back). Keep the screws and nuts aside for later use.



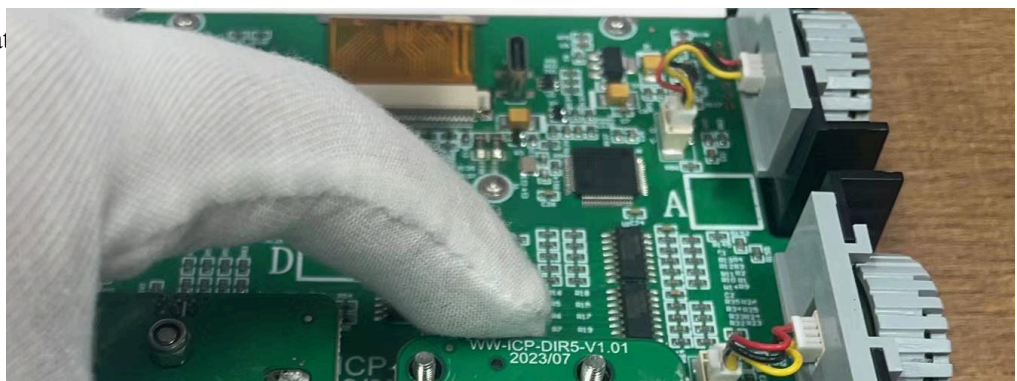
3. Hold the bottom cover with your left hand and grip the sides of the thumbwheels as indicated in the diagram with your right hand. Remove the top cover.



4. As shown in the diagram, remove the three M3 locking nuts.



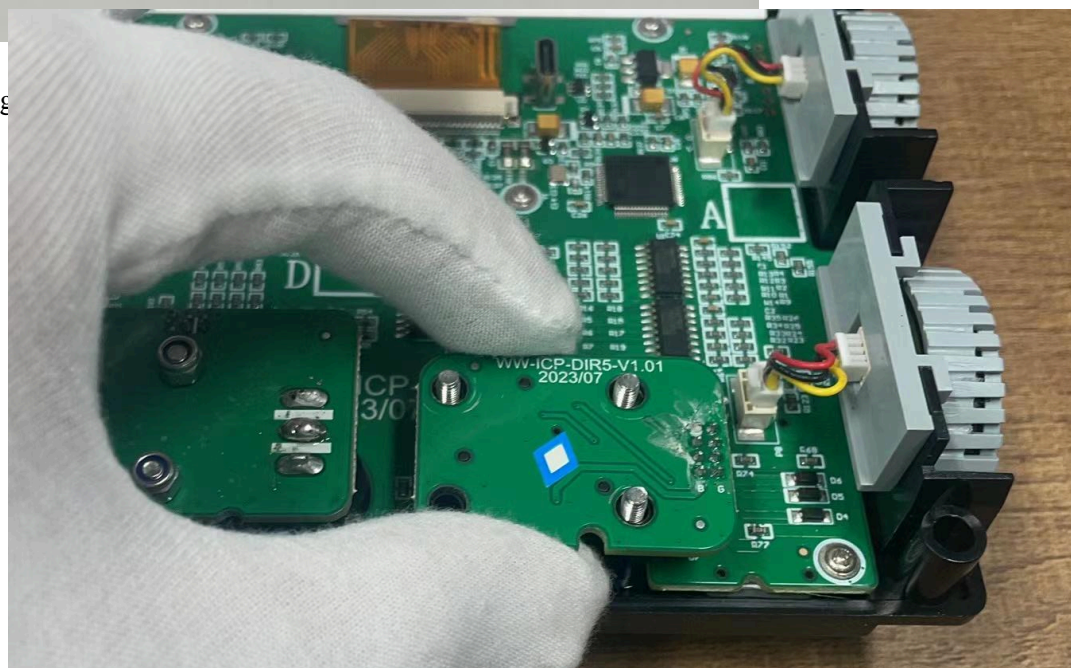
5. Wear anti-static



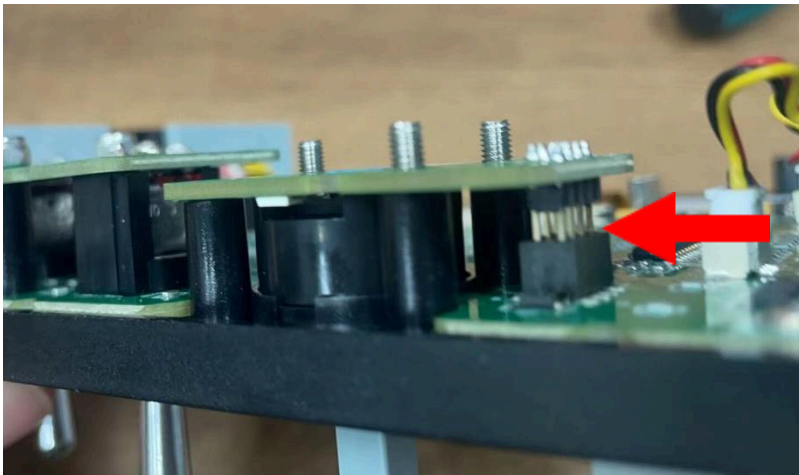
6.Prepare the new five-way switch assembly.



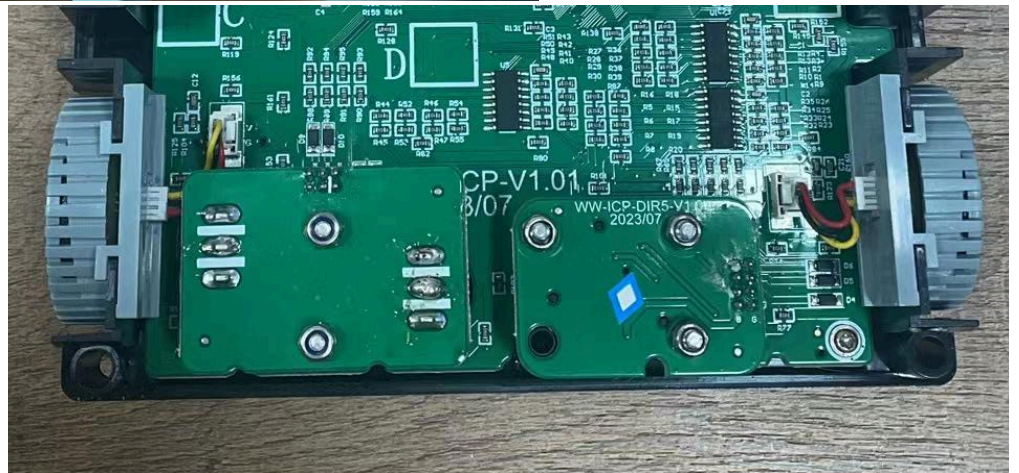
7.Wear anti-static g



8.Ensure that the male pins align with the female connectors, taking care not to tilt or misalign them.



9.Tighten the three M3 overtightened.



10.Reassemble the back cover in sequence and tighten the screws.

11.If you encounter a lack of tactile feedback or triggering in a specific direction (such as no response when moving left), you will need to adjust the five-way switch assembly. For example, if there is no tactile feedback when moving left, you need to shift the entire five-way switch assembly to the right, tighten the three M3 locking nuts again, and then try again.

