

Product Specification

FLOOR FINISHES

1. SPORT IMPACT FLOORING

Product: Mondo Ramflex Sport Impact Flooring 6 mm. 707 gray colour.

Ordered through RGO in Canmore (403) 621-1360

Website: <https://www.mondoworldwide.com/na/en/sport/fitness/sport-impact/>

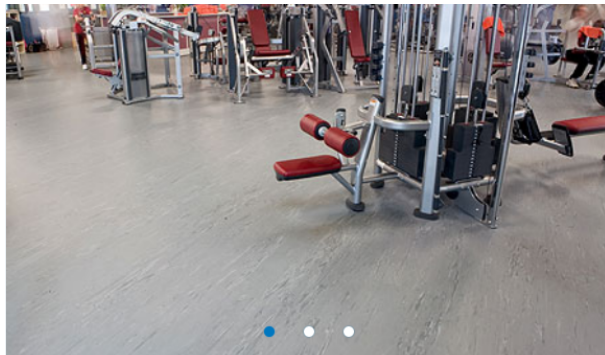
<https://www.mondoworldwide.com/na/en/sport/fitness/ramflex/>

www.rgo.ca

Location: All interior Flooring



Image:



2. TILE FLOORS

Product: Keystone Floor Tile 2 x 2 Mosaic Tile with Grout: Prism - winter grey. Ordered through

RGO in Canmore (403) 621-1360

Website: www.rgo.ca

Location: Floors of showers



HSS DESIGN BUILD
SUSTAINABLE & PASSIVE HOMES



Image: COLOR (59) : UPTOWN TAUPE SPC D202

WALL & CEILING FINISHES

Note: Cannot treat (stain, clear coat, or oil) any of the DLT (dowel laminated timber) and T&G (tongue and groove) inside the building re: disposal and reuse the material in the future.

1. DLT (Dowel Laminated Timber) Prefabricated Walls

Product: Spruce-Pine-Fir dowel laminated timber . **NOTE: DO NOT ADD ANY STAIN, FINISH, OR PAINT TO THESE WALLS.** Stain shall only be applied to the DLT (dowel laminated timber) bench and the window sills. If stain is added to these walls it will prohibit their natural hygroscopic tendency to regulate moisture in the space. If it is stained it will not be able to be reused in the future either.

- Supplied by ITF (International Timberframes) (250) 439-1099

Website: <https://itimberf.com/>

Location: Exterior walls



Image:

2. Tongue and Groove Wood Panels

Product: Douglas Fir. Do not stain.

Website: N/A

Location: Interior Walls behind lockers, mechanical room, storage room, interior kitchenette wall, and the interior wall of the exterior bathrooms.



HSS DESIGN BUILD
SUSTAINABLE & PASSIVE HOMES

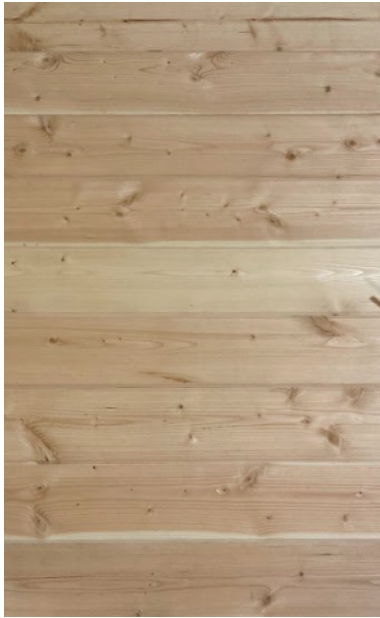


Image:

3. Dropped Ceiling

Product: Wood slat. 1 1/2" x 1 1/2" VG (vertical grain) Fir slats with 2x6 framing structure above painted black. Gold/brass colored trim head screws. Stained with clear coating Richelieu FLWM00005 Sivawood Clear Water-Based Self-Sealer for Natural Effect

Ultra-low VOC (see stain category below.)

Website: N/A

Location: Main bathroom/change room

Image:



4. PAINT

Product: Benjamin Moore HC-167 "Amherst Gray"



HSS DESIGN BUILD
SUSTAINABLE & PASSIVE HOMES

Website: N/A

Location: Main bathroom/change room above T&G as well as mech room and storage room.



Image:

5. STAIN

Product: 3051 Raw OSMO Polyx-Oil. Designed to retain an untreated appearance on light coloured wood. Natural oil. Ultra-low VOC.

Website: <https://osmo.ca/product/polyx-oil-raw/>

Location: Window trims on the interior and interior DLT (dowel laminated timber) bench/ DO NOT USE STAIN ON THE DOWEL LAMINATED TIMBER WALLS OR TONGUE AND GROOVE CEILING



HSS DESIGN BUILD
SUSTAINABLE & PASSIVE HOMES



Image:

Product: Richelieu FLWM00005 Sivawood Clear Water-Based Self-Sealer for Natural Effect
Ultra-low VOC. 5 degree sheen

Website:

<https://www.richelieu.com/ca/en/category/abrasive-and-finishing-products/s-finishing-products/s-water-based-products/sivawood-clear-water-based-self-sealer-for-natural-effect/1211885>

Location: Applied to wood slats in the main bathroom dropped ceiling. DO NOT USE STAIN ON THE DOWEL LAMINATED TIMBER WALLS OR TONGUE AND GROOVE CEILING



Image:



HSS DESIGN BUILD
SUSTAINABLE & PASSIVE HOMES

INTERIOR TRIMS

1. BASEBOARD

Product: 6" high Mondo Ramflex flooring 6mm

Website: <https://www.mondoworldwide.com/na/en/sport/fitness/sport-impact/>

Location: Interior



Image:

2. TILE WALLS

Product: Tierra Sol - Edimax Feel Series 12 x 24. Grout: Prism - Oyster Grey. Installed by RGO
(403) 621-1360

Website: <https://www.tierrasol.ca/edimax-feel>

Location: Walls of washrooms up to specified height



Image:

Colour: Pearl

Finish: Natural

3. ENTRY DOOR MATS

Product: 1" Thick, 3'-8" W, 24" D "Design Track" from Mats Inc. (Bolar for Canada) AD angle frame. • AD Frame – aluminum alloy 6061-T6 o Frame depth: 1-1/8" – for level base installation

Website: <https://matsinc.com/design-track.html> company is now matter surfaces, which sent us to order from Allmar Inc. Our contact at Allmar is:

Linda Paterson (403) 705-8111 e: linda.paterson@allmar.com



HSS DESIGN BUILD
SUSTAINABLE & PASSIVE HOMES

General office in Calgary (403) 236-2604

www.allmar.com

Location: Entry doors



Image:

Design Track

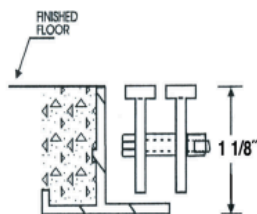
Maximum Rolling Load (pounds) Per Wheel For Level Base Installation

2' Span	2'8" Span	3'6" Span
2,796	1,900	1,372

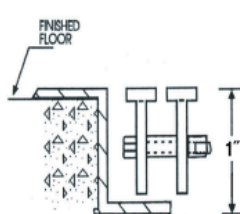
Depth

	VV or AD Frame (New Construction)	TT Overlap Frame (Retrofits)
Grille Only	1"	1"
Grille & Frame (Level Base)	1-1/8"	1"
Grille & Frame (Drain Pan)	2-1/8"	2"

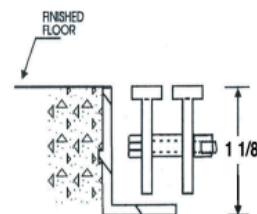
Level Base Installation



VV EMBEDDED FRAME



TT OVERLAP FRAME



AD FRAME

4. GRILLES



HSS DESIGN BUILD
SUSTAINABLE & PASSIVE HOMES

Product: Price Linear Bar Grille. Color 518 Maple Textured. Installed by MAC Furnaces. Our contact is Marc-Andre Cousineau macfurnaces@gmail.com (403)609-7847

Website: <https://www.priceindustries.com/grilles/products/lbp-linear-bar>

Location: Interior in walls

LBP Linear Bar Grilles (Pressed Core)

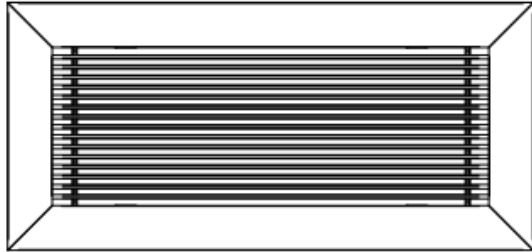


Image:

500 Series Finishes



5. MINI DIFFUSERS

Product: Seiho Model TT with clear anodized finish. Installed by MAC Furnaces. Our contact is Marc-Andre Cousineau macfurnaces@gmail.com (403)609-7847

Website: <https://seiho.com/product/tt/tt.html> (manual #1 in appendix)

Location: Interior



HSS DESIGN BUILD
SUSTAINABLE & PASSIVE HOMES



Image:

6. CEILING DIFFUSER

Product: Primex Vents WGX8 True Flow Ceiling Diffuser (only comes in “snow white”). Installed by MAC Furnaces. Our contact is Marc-Andre Cousineau macfurnaces@gmail.com (403)609-7847

Website: <https://www.primexvents.com/product-details/wgx-series-true-flow-ceiling-diffusers/> (manual #2 in appendix)

Location: Interior



Image:

MILLWORK

1. KITCHEN COUNTERS AND BACKSPLASH

Product: Stainless steel

Company: CSS Metal



HSS DESIGN BUILD
SUSTAINABLE & PASSIVE HOMES

Custom Stainless & Sheet Metal

Phone: (403) 236-9551

Fax: (403) 236-9533

email: info@cssmetal.ca

Bay C, 5815 36th Street SE
Calgary Alberta T2C 2J1
Canada



Location: Kitchenette

Image: N/A

2. BBQ AREA COUNTER

Product: Stainless steel with galvanized steel support brackets

Company: CSS Metal

Location: BBQ Area

Image: N/A

3. BBQ SHELTER

Product: Custom unit clad outside with rundle stone, inside with stainless steel, and custom perforated bear proof gate in front

Company: HSS Design Build

Location: BBQ Area

Image: N/A

4. INTERIOR BENCH

Product: DLT (dowel laminated timber). Stained with 3051 Raw OSMO Polyx-Oil. Designed to retain an untreated appearance on light coloured wood. Natural oil. Ultra-low VOC.

Company: International Timberframes (250) 439-1099

Location: Gathering Area



HSS DESIGN BUILD
SUSTAINABLE & PASSIVE HOMES



Image:

5. EXTERIOR BENCHES

Product: Series D TOB Bench. Ordered from Patrick McMaster - Custom Park and Leisure (403) 371-8165

Company: CPL

Website: <http://custompark.com/furnishings/park-benches-series-d.php>

Location: South and West (entry) walls



Image:

6. GENDER NEUTRAL BATHROOM AND SHOWER STALL PARTITIONS

Product: Custom made by CSS metal powder coated with “bronze”.



HSS DESIGN BUILD
SUSTAINABLE & PASSIVE HOMES

Custom Stainless & Sheet Metal

Phone: (403) 236-9551

Fax: (403) 236-9533

email: info@cssmetal.ca

Bay C, 5815 36th Street SE
Calgary Alberta T2C 2J1
Canada



Contact Info:

Website:

Location: Main bathroom/change room

Image:



7. WASTE, RECYCLING, & COMPOSTING COMBO UNITS

Product: Waste & Recycling Receptacles. Kitchenette to have six 7" diameter holes and Gathering Area to have six 8" holes for garbage, glass, paper, refundable beverage containers, plastic/metal, and compost. Kitchenette to have stainless steel countertop and Gathering Area to have quartz.

Company: Custom by Ideal Woodwork

Mike Zebrasky

Ideal Woodwork Ltd.

(403) 688-8553

idealwoodworkltd@me.com

Location: Gathering Area and Kitchenette

Image: N/A



HSS DESIGN BUILD
SUSTAINABLE & PASSIVE HOMES

8. KITCHEN CABINETRY

Product: Solid Wood Doors and Plywood Carcasses for Lower and Upper cabinets.

- Melamine Color is UniBoard "Shipshaw" K83 - super mat
- Melamine interior - full 3/4" construction with vinyl edges 0.5mm to match
- Inside of all cabinets to be adjustable shelves
- Doors to be "shipshaw" melamine with matching 0.5mm edge - soft close hinges
- Drawers (8) to be BLUM LEGRABOX in "Shipshaw" - full extension and soft close

Company: Ideal Woodworks

Mike Zebrasky

Ideal Woodwork Ltd.

(403) 688-8553

idealwoodworkltd@me.com

Location: Kitchenette



Image:



HSS DESIGN BUILD
SUSTAINABLE & PASSIVE HOMES

DOORS

1. DOORS

Product: CAL Real Doors – Blanka and Fago with custom integrated window. Ordered through Myles at Vetta windows:

Myles Ekman

Regional Manager Quebec & Eastern Canada

VETTA Building Technologies Inc.

+1 782-409-4302

myles@vettawindows.com

www.vettawindows.com

Website: <https://www.vettawindows.com/entry-doors>

<https://www.drzwi-cal.pl/en/drzwi-zewnetrzne/fago/#szczegoly>

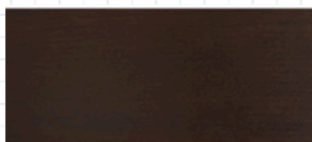
Location: Exterior and Interior

Image:

Exterior Doors:



FAGO CAL DOOR



OLD OAK COLOUR
FINISH



BLANKA CAL DOOR -
NO TEXTURE



BENJAMIN MOORE
CUSTOM RED
FP-29



HSS DESIGN BUILD
SUSTAINABLE & PASSIVE HOMES

Ben Moore

Custom Red

FP-29

Interior Doors: Steel doors with louver vents for 3 shower stalls and barrier free interior bathroom. Steel door from main bathroom to mechanical room. VG FIR 2/10x8/0x1-3/4, 6-9/16 Rabb Jamb Single Drilled, Machined 4 hinges storage room door. 1P VG FIR (vertical grain douglas fir) Shaker w/ White Lami Glass 2/10x8/0x1-3/4 pocket door for kitchenette. All interior doors from Timbertown.

Contact information:

(403) 678-0775

timcan@timbertown.ca

PLUMBING

Please see Mech Drawings SHEET M402 for additional plumbing fixture information

Plumbing Contact: Freshwater Plumbing - Mike Davidson (587) 222-1523

Office number: (403) 609-9995

mikedavidson@freshwaterplumbing.ca

1. TROUGH STYLE SINK

Product: 90"W x 23.5" D x 5" apron. Bradley Corp. stainless steel trough style sink with quartz countertop. Equipped with automatic faucet, hand dryer and soap dispenser in one "WashBar"

Website: <https://www.bradleycorp.com/product/verge-with-washbar-technology-3-station>
<https://www.bradleycorp.com/mediamanager/view/11831/215-1844.pdf> - installation manual

(manual #3 in appendix)

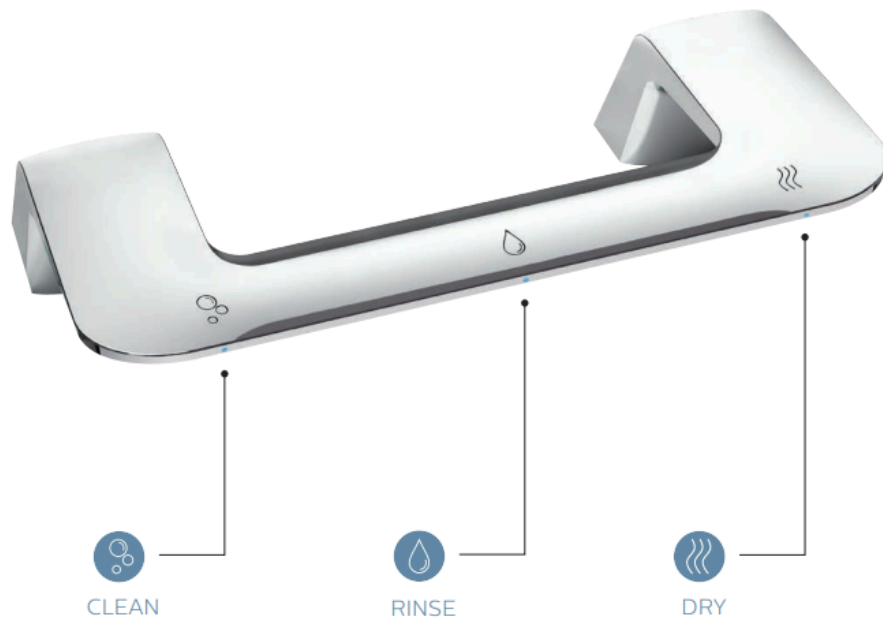
Location: Main Bathroom



HSS DESIGN BUILD
SUSTAINABLE & PASSIVE HOMES



Image:



Faucet:

<https://www.bradleycorp.com/washbar>

Soap refills for all Bradley sinks in pavilion:

Swish Clean & Green® Foaming Soap - 3.78L

SKU65320-4 Supplier Product Code 65320-4

<https://swish.ca/swish-clean-greenr-foaming-soap-3-78l>



HSS DESIGN BUILD
SUSTAINABLE & PASSIVE HOMES



2. KITCHENETTE 3 COMPARTMENT SINK

Product: 3 compartment stainless steel sink with drain board

Website: <https://nellacutlery.ca/products/nella-three-tub-sink-18-x-21-x-14-two-drain-boards-corner-drain-25273>

Comes with drain guards

18-gauge stainless steel

Faucet holes are 1" on center

Shipped with 16-gauge, galvanized legs removed

Drain size: 1.8" corner drain

Conforms to CSA Standards

Corner drain

Sink: 18" x 21" x 14"

Overall: 90" x 26 1/2" x 44"

Location: Kitchenette



HSS DESIGN BUILD
SUSTAINABLE & PASSIVE HOMES



Image:

3. KITCHENETTE HAND WASH SINK

Product: Steel Queen QSL1719-8-2 Stainless Steel 19" L x 17" W x 8" D

Website:

https://www.kindred-sinkware.com/ca/en/products/kitchen-sinks/steel-queen/101-0045-214_detail.html

(manual #4 in appendix)

Location: Kitchenette

Image:



4. KITCHENETTE HAND WASH SINK FAUCET

Product: MONTERREY

Monterrey® 8-Inch Widespread Gooseneck Faucet With Wrist Blade Handles 0.5 gpm/1.9 Lpm With Flexible Underbody



HSS DESIGN BUILD
SUSTAINABLE & PASSIVE HOMES

Website:

<https://www.americanstandard.ca/Mechanical-Commercial-Fittings/Monterrey-8-Inch-Widespread-Gooseneck-Faucet-With-Wrist-Blade-Handles-05-gpm-19-Lpm-With-Flexible-Underbody/CHROME-6540275002>

(manual #5 in appendix)

Location: Kitchenette



Image:

5. BARRIER FREE BATHROOM SINK

Product: 30" W x 23.5" L x 5" apron. Bradley Corp. stainless steel trough style sink with quartz countertop. Equipped with automatic faucet, hand dryer and soap dispenser all in one unit called WashBar

(manual #3 in appendix)

Website: <https://www.bradleycorp.com/product/verge-with-washbar-technology-1-station>

Location: Main Bathroom Barrier free stall and Exterior Barrier free bathroom



HSS DESIGN BUILD
SUSTAINABLE & PASSIVE HOMES

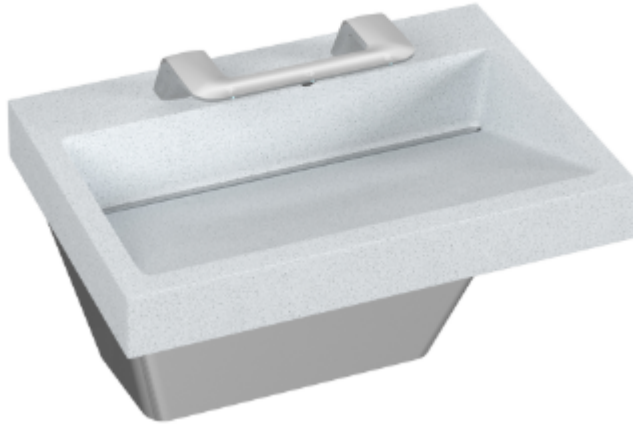


Image:

6. EXTERIOR BATHROOM & INTERIOR BARRIER FREE BATHROOM HAND SINK

Product: 30" W x 23.5" L x 5" apron. Bradley Corp. stainless steel trough style sink with quartz countertop. Equipped with automatic faucet, hand dryer and soap dispenser all in one unit called WashBar

(manual #3 in appendix)

Website: <https://www.bradleycorp.com/product/verge-with-washbar-technology-1-station>

Location: Main Bathroom Barrier free stall and Exterior Barrier free bathroom

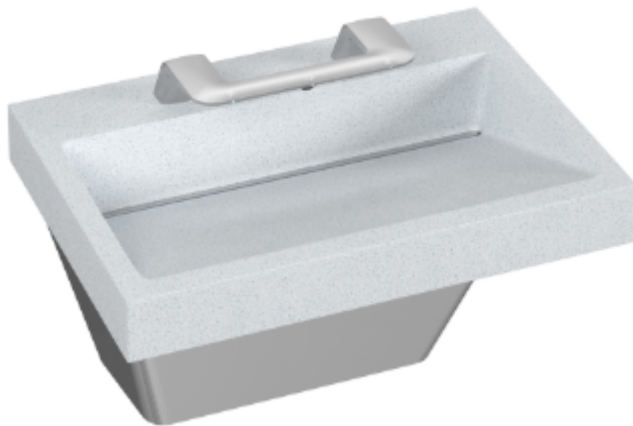


Image:

7. OUTDOOR BBQ SINK

Product: Steel Queen QSL1719-8-2 Stainless Steel 19" L x 17" W x 8" D



HSS DESIGN BUILD
SUSTAINABLE & PASSIVE HOMES

(manual #4 in appendix)

Website:

https://www.kindred-sinkware.com/ca/en/products/kitchen-sinks/steel-queen/101-0045-214_detail.html

Location: BBQ Area

Image:



7. OUTDOOR BBQ SINK FAUCET

Product: MONTERREY

Monterrey® 8-Inch Widespread Gooseneck Faucet With Wrist Blade Handles 0.5 gpm/1.9 Lpm With Flexible Underbody

Website:

<https://www.americanstandard.ca/Mechanical-Commercial-Fittings/Monterrey-8-Inch-Widespread-Gooseneck-Faucet-With-Wrist-Blade-Handles-05-gpm-19-Lpm-With-Flexible-Underbody/CHROME-6540275002>

Location: BBQ area



HSS DESIGN BUILD
SUSTAINABLE & PASSIVE HOMES



Image:

8. KITCHENETTE DISHWASHER

Product: 501 LT Undercounter Low Temperature Dishwashing Machine. 21 racks/hour. 24" W x 25" D x 33.75" H

(manual #6 in appendix)

Website: <https://www.championindustries.com/501-lt>

Location: Kitchenette undercounter

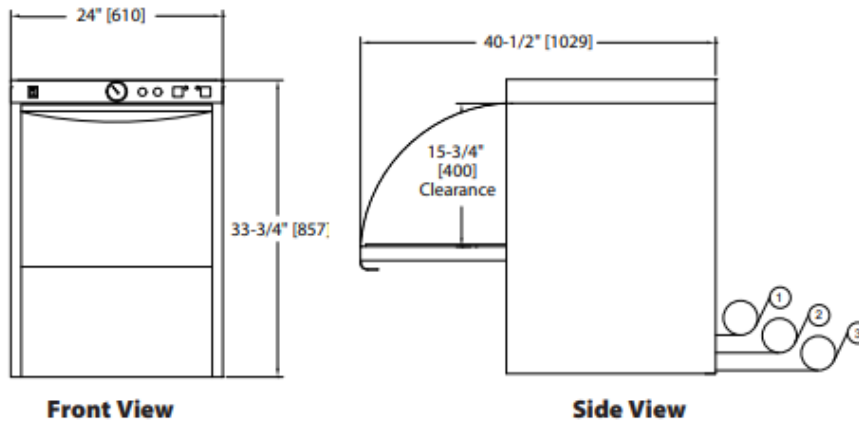


Image:



HSS DESIGN BUILD
SUSTAINABLE & PASSIVE HOMES

Dimensions shown in inches and [millimeters]



9. INTERIOR BOTTLE FILLER AND FOUNTAIN

Product: Model EZSDWSVRS Elkay ezH2) Bottle Filling Station with Single ADA Vandal-Resistant Cooler, Non-Filtered Non-Refrigerated Stainless (manual #7 in appendix)

Website: <https://www.elkay.com/products/details/EZSDWSVRSK>

Location: Gathering Area



Image:

10. SHOWER

Product: Symmons 3-325. 45 second showeroff

Website: <https://www.symmons.com/products/showeroffmetering-shower-unit-3-325/>

(manual #8 in appendix)



HSS DESIGN BUILD
SUSTAINABLE & PASSIVE HOMES

Location: Main bathroom showers

Image:



11. TOILETS

Product: GEBERIT DUOFIX IN-WALL SYSTEM WITH SIGMA CONCEALED TANK FOR 2X6 CONSTRUCTION

Website:

<https://www.geberitnorthamerica.com/products/installation-systems/geberit-toilet-cisterns/for-2x6-construction/>

(manual #9 in appendix)

Location: All water closets



HSS DESIGN BUILD
SUSTAINABLE & PASSIVE HOMES



Image:

Product: Toilet wall-mounted Duravit Rimless® #252909

Website:

<https://pro.duravit.us/pro/html/default/product-details.us-en.html?product=2333563&nser=2105&ncat=toilets>

Location: All water closets

Image:



12. JANITOR SINK

Product: ProFlo PFMB Series 24" x 24" Mop Basin in white with PVC strainer

Website:

https://www.ferguson.com/product/proflo-pfmb-series-24-x-24-in-mop-basin-in-white-with-pvc-strainer-pfmb2424/_/R-4203178

Location: Mop Basin in Mechanical Room



HSS DESIGN BUILD
SUSTAINABLE & PASSIVE HOMES



Image:

13. JANITOR FAUCET

Product: Fiat 830AA Service Sink Faucet, Wall mount, 2 handles, 8" center, chrome plated

Website: <https://www.firstsupply.com/Product/CRP830AA>

(manual #10 in appendix)

Location: Mop Basin in Mechanical Room

Image:



14. SHOWER DRAINS

Product: S-DG 65 Linear Infinity Drain (116" overall length for standard showers and 36" overall length for barrier free shower). Perforated stainless steel grating (2 outlets for standard shower stalls, 1 outlet for barrier free). Installed flush to floor. Barrier Free compliant

Website: <https://infinitydrain.com/product/s-dg-65/>



HSS DESIGN BUILD
SUSTAINABLE & PASSIVE HOMES

(manual #11 in appendix)

Location: Standard and barrier free showers

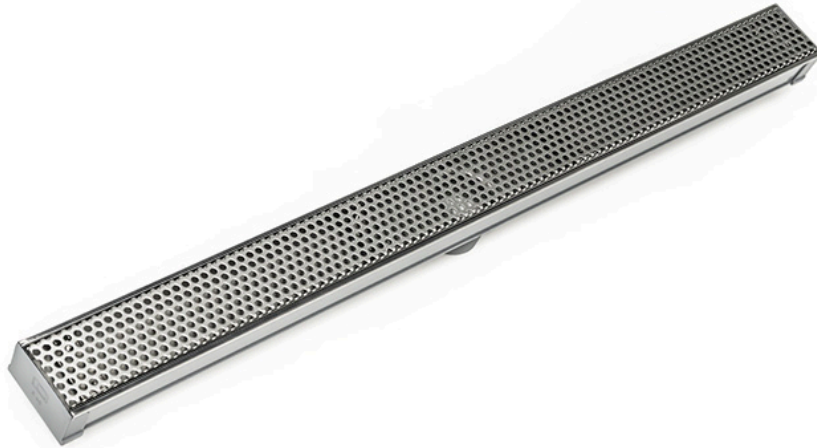


Image:

15. HOSE BIB

Product: Adapter forestry fire hose, male thread, grey 1 1/2", 3" aluminum 280. Manufacturer #SF03A. Item #STUSF03A

Location: On North facade of building between the mechanical room exterior door and the VRF enclosure



Image:



HSS DESIGN BUILD
SUSTAINABLE & PASSIVE HOMES



Roll over image to zoom.

ADAPTER, FORESTRY FIRE HOSE, MALE THREAD, GREY, 1 1/2 IN, 3 IN, ALUMINUM 280

CANADA METAL PACIFIC

Web Price ⓘ:
\$8.30 / EACH

1

Add to Cart

☐ Compare

Availability

☐ Pick Up ☒ Shipping

To view Availability for another location, please enter postal code below ⓘ

New Postal Code

Apply

Item # STUSF03A

Mfr. Model # SF03A

UNSPSC # 24101808

CATALOGUE PAGE # N/A

Shipping Weight 0.2 lbs

BATHROOM ACCESSORIES

1. TOILET PAPER DISPENSER

Product: Black Wall Mounted Toilet Paper Dispenser. Needs to hold the T/T Jumbo Tork 2pl

WHT 6x1600FT (12021502) <https://www.tork.ca/en/product/12021502/refill/toilet-paper>

Website: <https://www.tork.ca/en/product/554028a/dispenser/toilet-paper>

Location: Exterior Bathrooms and Interior water closet stalls



Image:

2. SANITARY NAPKIN RECEPTACLE

Product: Wall mounted Sanitary Napkin Receptacle - Stainless Steel. Needs to fit the wax bag

TOB uses – which is 7 "x 4" x 10".

Website:

<https://www.uline.ca/Product/Detail/H-3454/Personal-Hygiene-and-Dispensers/Wall-Mountable-Sanitary-Napkin-Receptacle-Stainless-Steel>



HSS DESIGN BUILD
SUSTAINABLE & PASSIVE HOMES

Location: Exterior Bathrooms and Interior water closet stalls



Image:

3. SOAP DISPENSER

Product: Tork Foam Soap Dispenser, Stainless Steel #466000

Website: <https://www.tork.ca/en/product/466000/dispenser/hand-soaps>

Soap - <https://www.tork.ca/en/product/401211/refill/hand-soaps>

Location: Kitchenette



Image:

Soap for this dispenser:

Tork® Premium Extra Mild Foam Soap - 6x1L

SKU401211 Supplier Product Code 401211

<https://swish.ca/tork-premium-extra-mild-foam-soap-6x-1l>



HSS DESIGN BUILD
SUSTAINABLE & PASSIVE HOMES



4. BABY CHANGING STATION

Product: Baby Changing Station - Horizontal, Stainless Steel

Website:

<https://www.uline.ca/Product/Detail/H-9602/Bathroom-Supplies/Koala-Kare-Baby-Changing-Station-Horizontal-Stainless-Steel> stainless steel

Location: Exterior Bathrooms and Interior barrier free/family water closet stalls

Image:



Enlarge

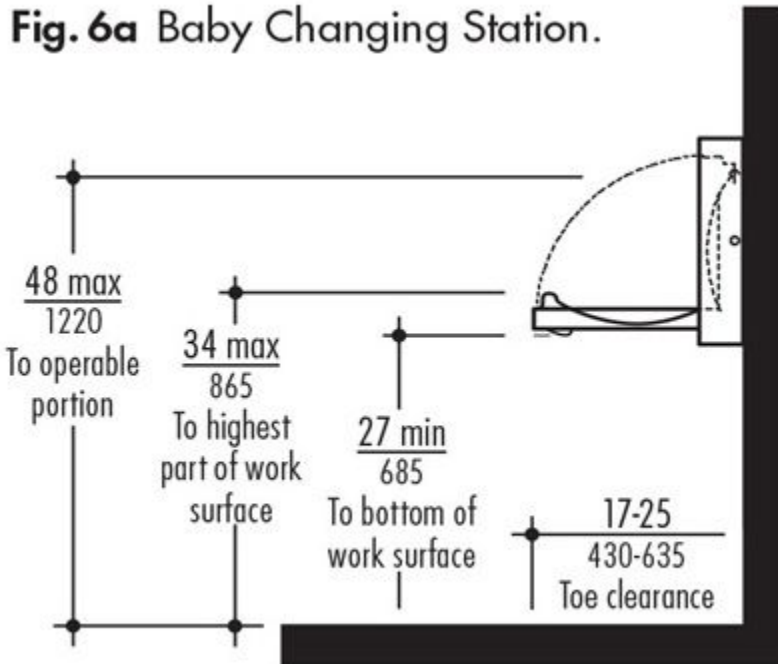
A necessity for family-friendly restrooms in restaurant stores and public buildings.

- Safety strap holds baby securely.
- Easy-to-clean antimicrobial finish.
- Features stainless steel veneer panel.
- Liner dispenser included. Use with [Liners](#), sold separately.



HSS DESIGN BUILD
SUSTAINABLE & PASSIVE HOMES

Fig. 6a Baby Changing Station.



5. BATHROOM MIRRORS

Product: Stainless steel for 2 exterior bathroom mirrors and glass mirror for trough sink and tilted glass mirror barrier free interior bathroom. Glass mirror supplied and installed by Canmore Glass

admin@canmoreglass.com (403) 678-4588

Website: Grainger <https://www.grainger.ca/en>

Location: bathrooms

Image:

6. SHOWER CURTAINS

Product: Gull Grey Weighted Shower Curtains. 42" W x 72" H for standard showers and 72" W x 72" H for barrier free shower. All curtains are anti-fungal, anti-bacterial, anti-static, flame resistant, stain resistant, odor resistant, and durable.

Supplied by Accessible Construction (310) 215-3332

Website:

https://accessibleconstruction.com/products/24?variant=31989062664270¤cy=USD&gad=1&gclid=CjwKCAjwxr2iBhBJEiwAdXECw1JyX9O6-xtVueS_Jc2FhzPCPwLixD2RYP8tUlmwWDsdISLkeoFwghoCn3kQAvD_BwE

Location: Standard showers and barrier free shower



HSS DESIGN BUILD
SUSTAINABLE & PASSIVE HOMES



Image:

7. MOUNTED COAT HOOKS

Product: ASI 0714 Commercial Coat and Bumper Hook, Brass w/ chrome finish

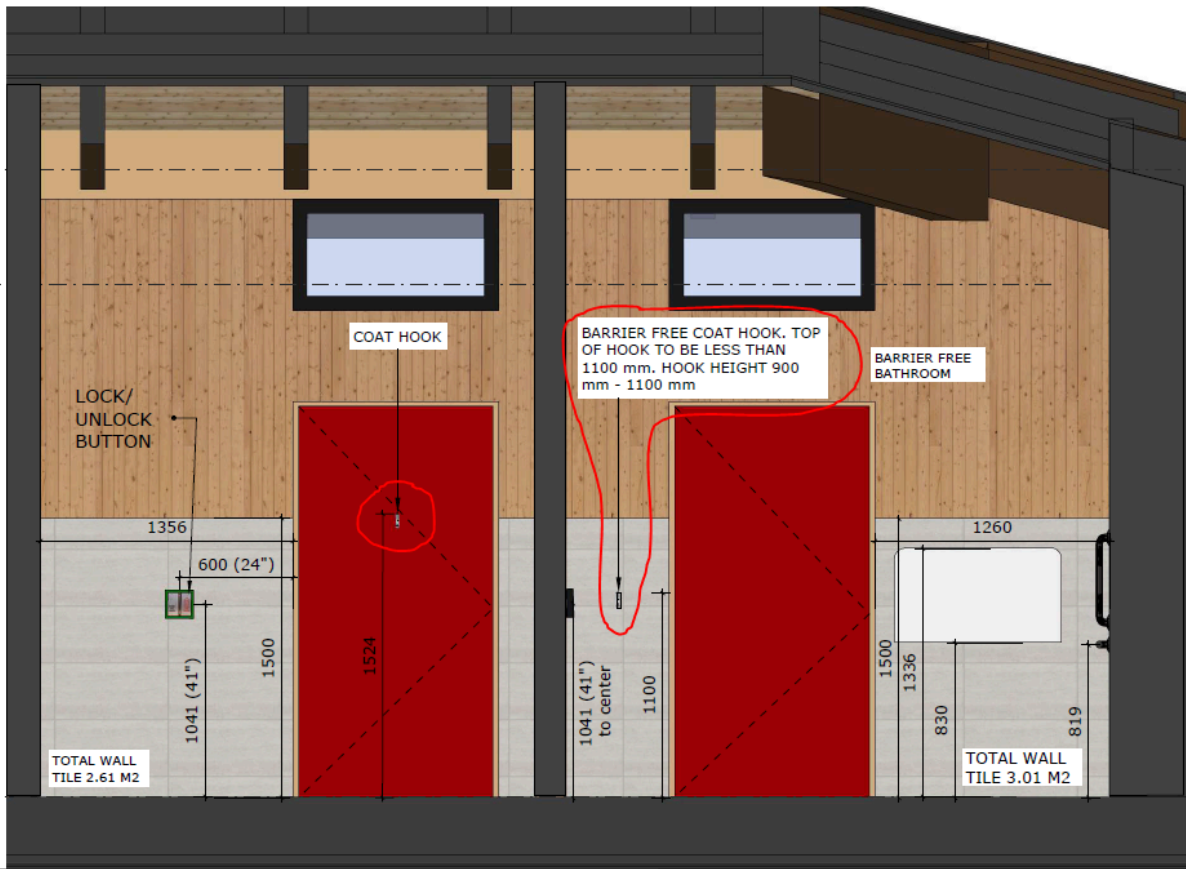
Website:

<https://www.totalrestroom.com/collections/commercial-hooks-shelves-racks-for-public-bathroom/s/products/asi-0714-commercial-coat-and-bumper-hook-brass-w-chrome-finish>

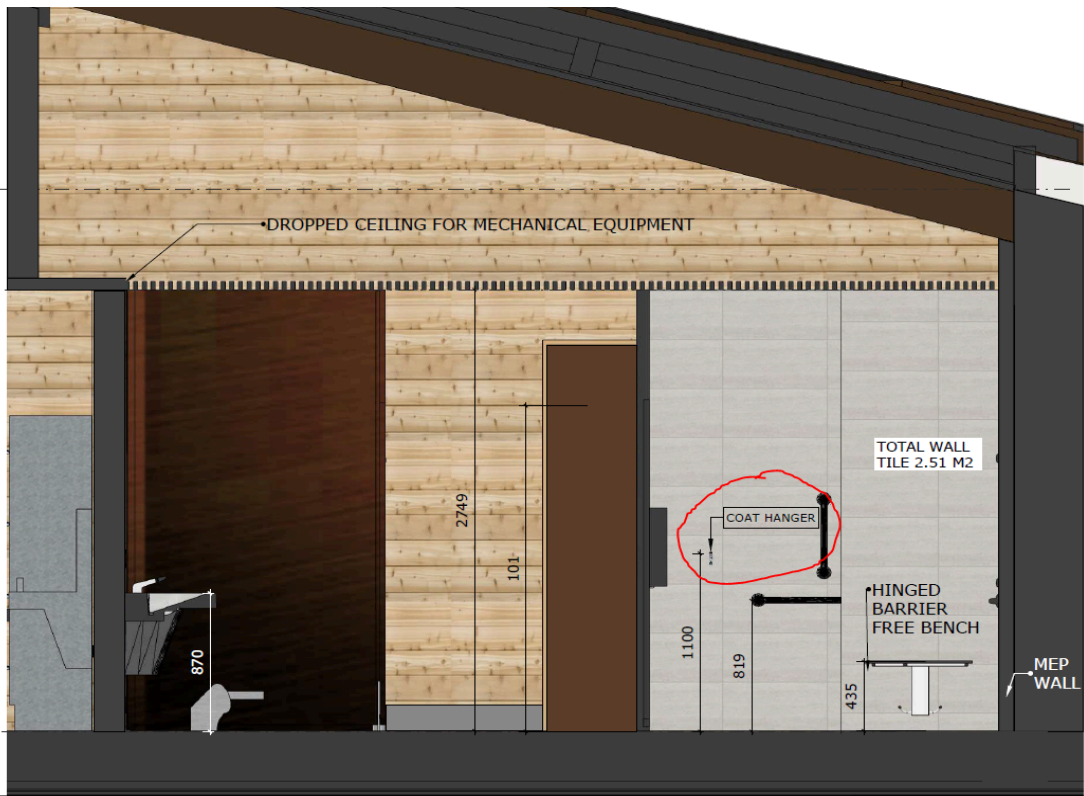
Location: all bathrooms: To be on center of the inside of all (2) toilet stalls in main bathroom at 1524mm height as well as center on the inside of all (3) standard shower stalls in main bathroom at 1524mm height. See drawings below for location of two barrier free coat hooks.



HSS DESIGN BUILD
SUSTAINABLE & PASSIVE HOMES



EXTERIOR BATHROOMS WEST INTERIOR ELEVATION



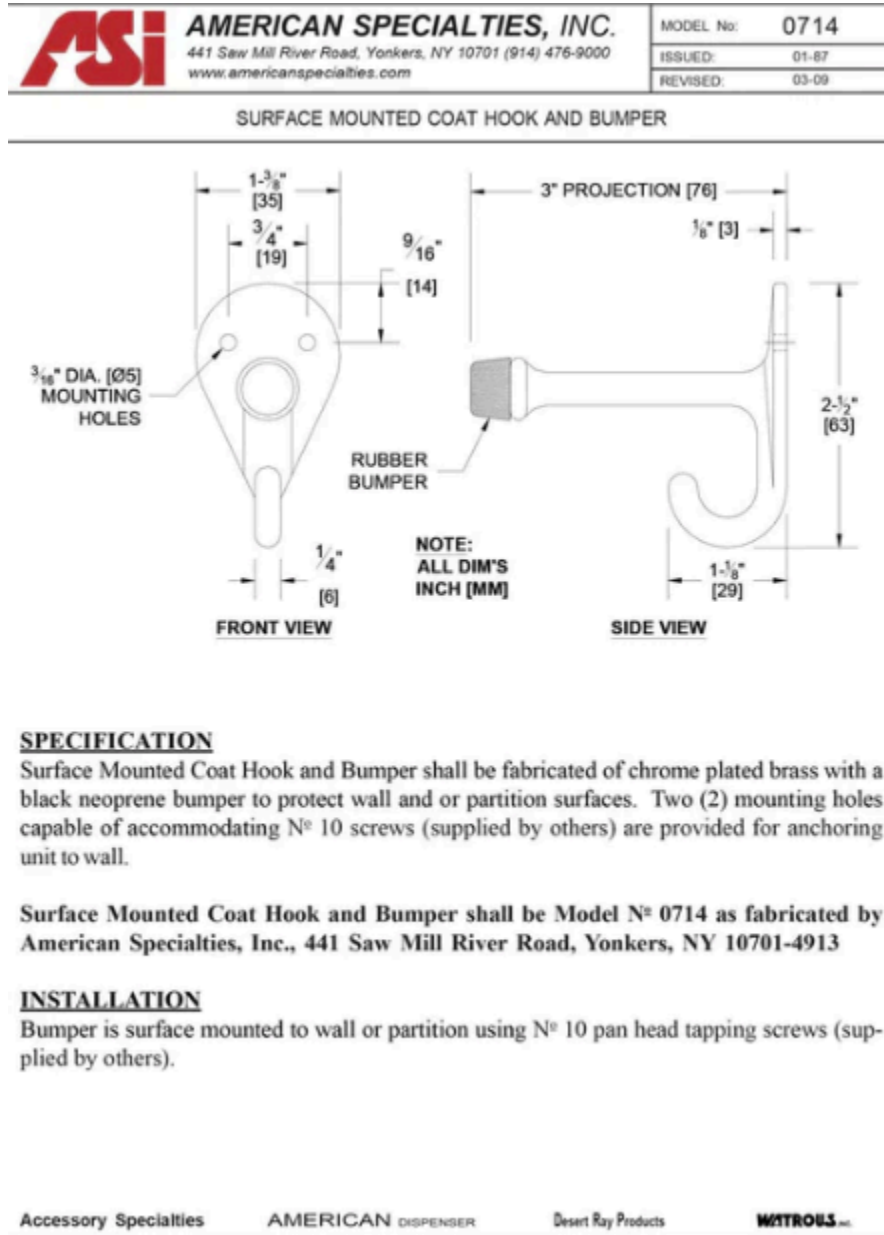
WEST INTERIOR ELEVATION



HSS DESIGN BUILD
SUSTAINABLE & PASSIVE HOMES



Image:



8. TEAK FOLD DOWN SHOWER BENCHES



HSS DESIGN BUILD
SUSTAINABLE & PASSIVE HOMES

Product: 3 of the TBF-24-W in the standard showers and one of the ADA bench for the barrier free shower.

Amber Kingsley

Office Manager/Customer Services

866.969.8325 ext. 204

Direct Line 507-858-0204

Fax: 507-216-4602

Teakworks4u.com

156B Galewski Drive, Winona, MN 55987

Website: <https://www.teakworks4u.com/collections/teak-shower-benches>

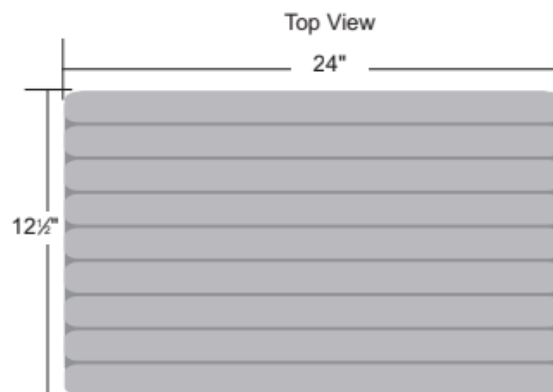
Location: 3 Standard showers and the barrier free shower in the main bathroom

Image:

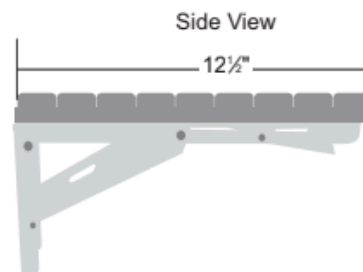


Wall Mount Bench
Order No. TBF-24W

156-B Galewski Drive | Winona, MN 55987 | 866.969.8325 | 507.452.1785 | fax: 507.858.0211 | www.teakworks4u.com



- Mounts directly to the shower wall
- 304 Stainless Steel wall brackets lock securely into place when the seat is lifted, yet folds down easily when not in use
- Brackets are set 16" on center
- Seat remains in raised position until you fold it down
- Low pressure spring action makes it easy to raise and lower the seat
- Rounded edges on seat battens for comfort and safety



Dimensions:

- 24"W x 12 1/2"D (609.6 x 317.5mm) Bracket



HSS DESIGN BUILD
SUSTAINABLE & PASSIVE HOMES



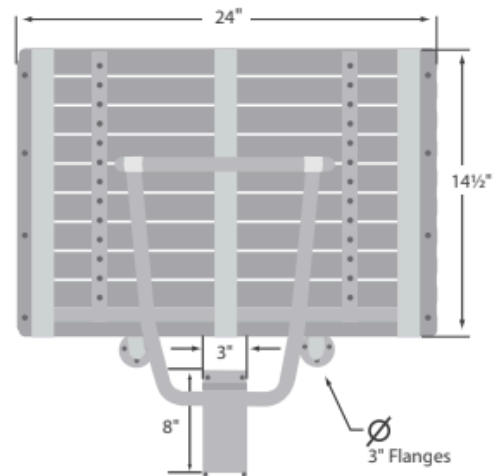
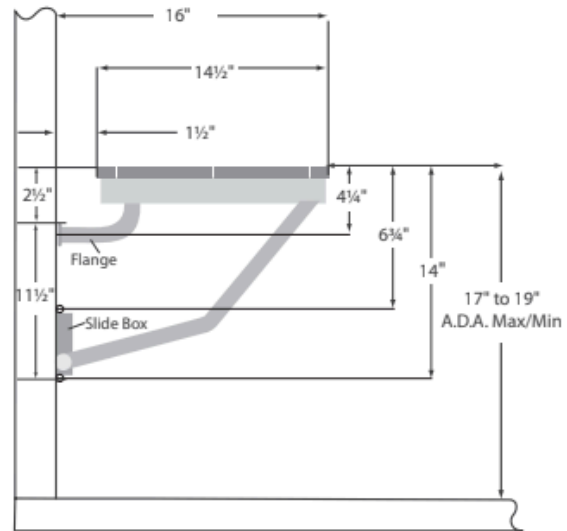
- Heavy duty type 304 18-gauge stainless steel wall brackets, supports and frame
- Stainless steel hardware included
- Seat remains in raised position until you pull it down
- Stainless steel slide box makes it easy to raise and lower the seat
- Rounded edges on seat battens for comfort and safety
- Seat battens are spaced slightly apart to allow water to drain through

Dimensions:

- 24"L x 16"D (609.6 x 406.4mm)
- Height Range: 17" to 19" (431.8 to 482.6mm)

*Installation & Load Bearing:

All shower seats must only be installed using suitable fasteners and sufficient in-wall backing materials. ADA mounting height for lowered seat is 17" (432mm) to 19" (482mm). When properly installed, all shower seats have been designed and manufactured to support loads exceeding the downward pull requirements for Federal specifications FHA, VA, HUD.



APPLIANCES

1. REFRIGERATOR

Product: LG Electronics 30-inch W 22 cu.ft. Bottom Freezer Drawer Refrigerator in Stainless Steel

Model # LRDNS2200S



HSS DESIGN BUILD
SUSTAINABLE & PASSIVE HOMES

Website:

<https://www.homedepot.ca/product/lg-electronics-30-inch-w-22-cu-ft-bottom-freezer-drawer-refrigerator-in-stainless-steel/1001695104>

(manual #12 in appendix)

Location: Kitchenette



Image:

ELECTRICAL

1. FOR ALL LIGHTING AND FIXTURES SEE LUMINAIRE SCHEDULE ON SHEET E202 AS WELL AS ELECTRICIAN PACKAGE OF O&MS AND OTHER DOCUMENTS

Electrician Contact: Mike's Electric - Chris Butler (403) 996-0048

Office number: (403) 762-2871

ChrisB@mikeselectric.ca

Electrical Engineer Contact: Renu Engineering - Todd Carson (780) 999-8633

Office (587) 782-5078

tcarson@renu.engineering

MECHANICAL

1. FOR MORE DETAILS ON MECHANICAL SYSTEMS SEE SHEET M402

Mechanical Engineer Contact: Renu Engineering - Mark Napora (780) 710-3877

Office (587) 782-5078



HSS DESIGN BUILD
SUSTAINABLE & PASSIVE HOMES

**2. ROUGH IN HYDRONIC DISTRIBUTION PIPES WITHIN CONCRETE SLAB FOR
POTENTIAL FUTURE RADIANT HEATING. STUB OUT IN MECH ROOM ONLY**

3. AIR-SOURCE HEAT PUMP

Product: VRV Aurora Heat Recovery Outdoor Unit

Website:

https://bim.daikincity.com/item/vrv-heat-recovery-outdoor-units/-aurora-heat-recovery-outdoor-units-relq_ta-series/relq72taycu

(manual #13 in appendix)

Location: On exterior North wall outside



Image:



HSS DESIGN BUILD
SUSTAINABLE & PASSIVE HOMES



(with snow hoods)

4. ERV (ENERGY/HEAT RECOVERY VENTILATOR)

Product: Dual Core Tempeff RGSP-K Energy Recovery Ventilator

Website:

https://www.tempeff.com/wp-content/uploads/2022/09/14094-Tempeff_RGSP-K_Sellsheet.pdf

(manual #14 in appendix)

Location: Mechanical Room ceiling



Image:



HSS DESIGN BUILD
SUSTAINABLE & PASSIVE HOMES

4. FAN COIL UNITS

Product: Daikin FXTQ09TAVJUD, Daikin FXTQ60TAVJUD, and Daikin FXTQ12TAVJUD

Website:

<http://www.daikinac.com/content/assets/DOC/SubmittalDataSheets/2016/VRV-IU/FXTQ09TAVJUD.pdf>

(manual #15 in appendix)

Location: Mech room interior South wall



Image:

5. GRINDER PUMP LIFT STATION

Product: Liberty Pump LSG200-Series (Single-Stage)

Website: <https://www.libertypumps.com/wp/dom/Products/LSG200-Series-Omnivore>

(manuals #16 and 17 in appendix)

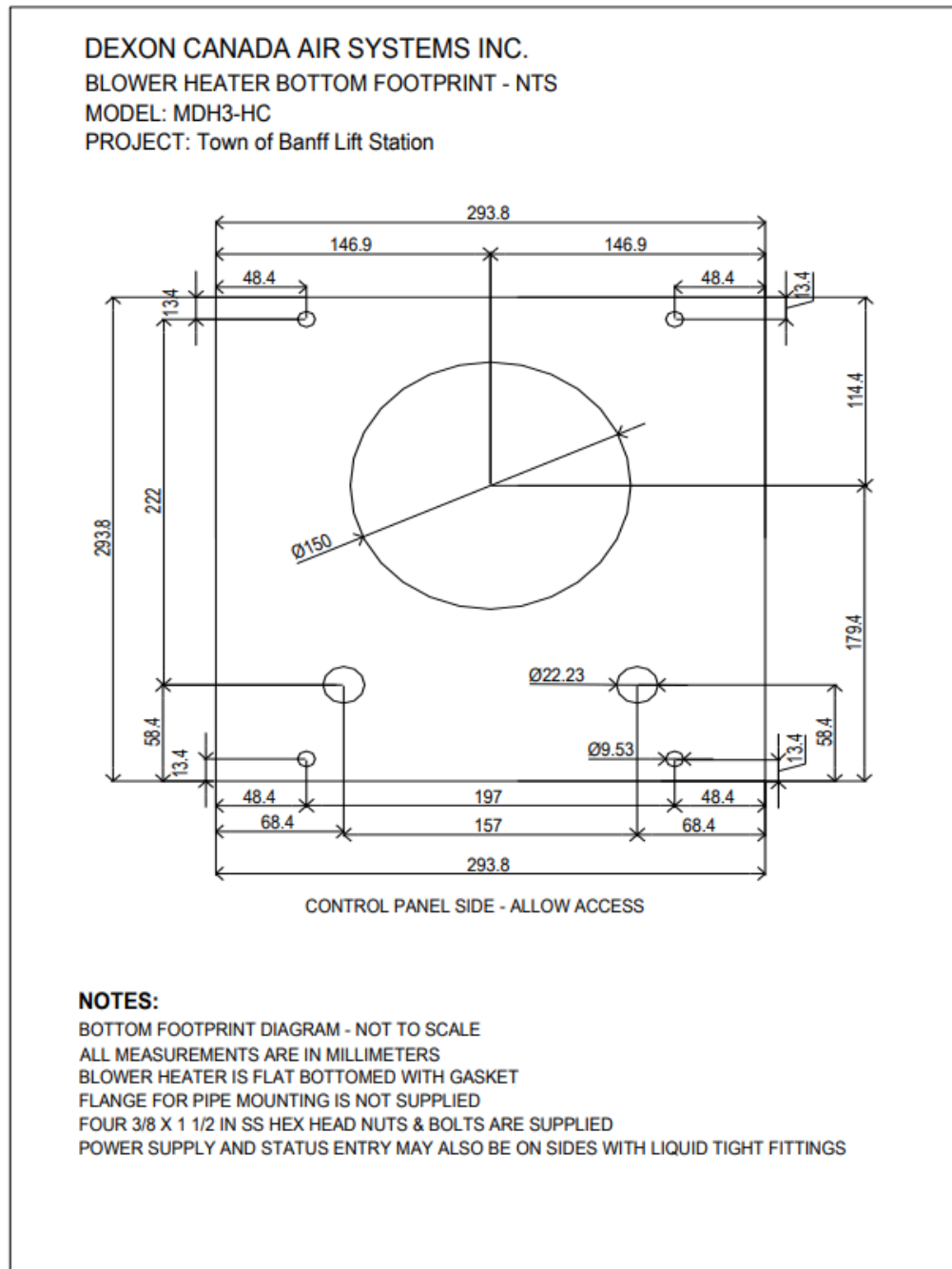
Location: Outside of the mechanical room (approx. 5.5m away from building) at NorthWest corner of the lot



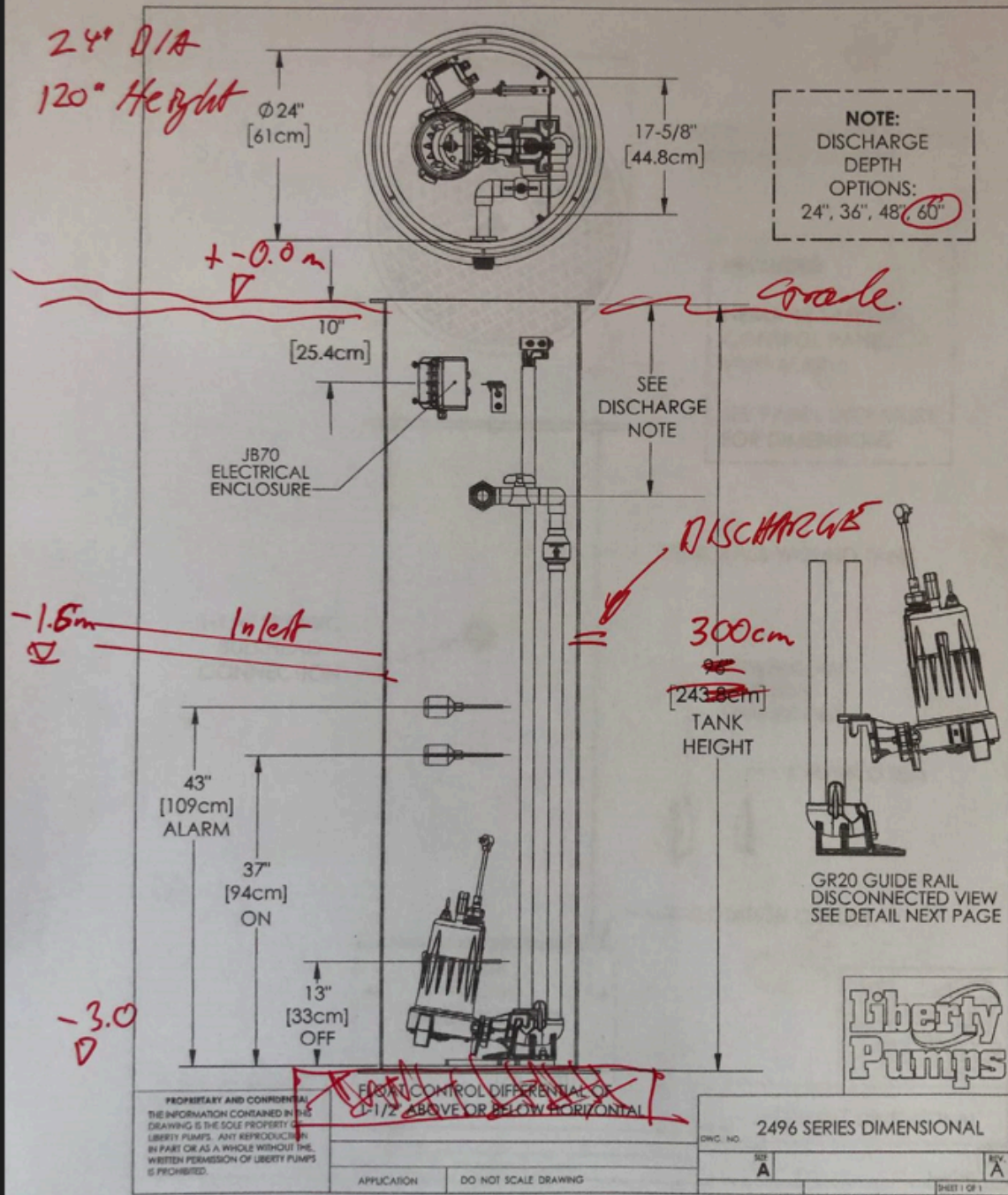
HSS DESIGN BUILD
SUSTAINABLE & PASSIVE HOMES

Image:

BOTTOM FOOTPRINT



2496LSG/LSGX-Series Dimensional Data





EXTERIOR FINISHES

1. STAINED WOOD SIDING

Product: Cedar bevelled siding 1" x 8", Staining with "Espresso 17" Sansin SDF stain

Website: https://barrydownepaint.com/search?q=ESPRESSO%2017*

Location: Some exterior walls, see elevations for details



HSS DESIGN BUILD
SUSTAINABLE & PASSIVE HOMES



Image:

2. RUNDLE STONE SIDING

Product: Wet stack, mixed colors (grey, warm golds, etc. like Fairmont) Rundle Stone. Dark gray/charcoal mortar

Website:

Location: Lower exterior walls, see elevations for details



Image:

3. ROOFING

Product: Ranchlands Shake by Euroshield "Grey". 10" exposure to the weather & 3/4" edge profile

Website: <https://www.euroshieldroofing.com/products/ranchlands-shake/>

(manual #18 in appendix)

Location: Roof

Image:



HSS DESIGN BUILD
SUSTAINABLE & PASSIVE HOMES



- 3 Section Closed Key-way Panel
- 36"W x 22.5"H x 3/4" (10" Exposure)
- Average 3.4 lbs/sq.ft (340 lbs/square)
- 20 sq.ft Coverage/bundle
- 8 Pieces/Bundle

WARRANTY

Rundle Slate is warrantied for 50 years against perforation or tear-through damage from hail 2" diameter or less.

4. Gutter/Rain Spouts

Product: Custom copper gutter spout (supplied by Larry Drinkle with Ativa Custom Welding 780-914-8046) and copper gutters (supplied and installed by DC Roofing)

TESTING

Testing of Euroshield® recycled rubber roofing was conducted at independent laboratories recognized by the Canadian Construction Materials Council (CCMC) and ICC (USA).

- UL2218 Class 4 Impact Rated - Listed by QAI
- Class C Fire Rated
- Wind Testing - Standard Test Method for Wind-Resistance of Steep Slope Roofing Products passed at 150mph for 2 hours continuous exposure at PRI labs, Tampa, Florida.



HSS DESIGN BUILD
SUSTAINABLE & PASSIVE HOMES

Dustin Cunningham & Lindsay Birchall (Owners)

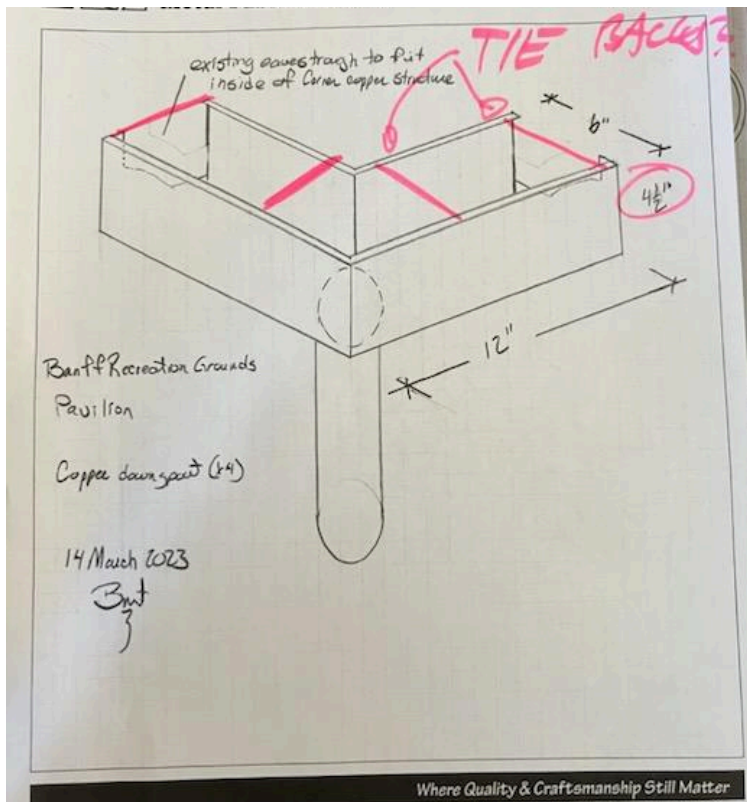
Phone: **403.828.6753**

Email: contact@dcroofingincalberta.com

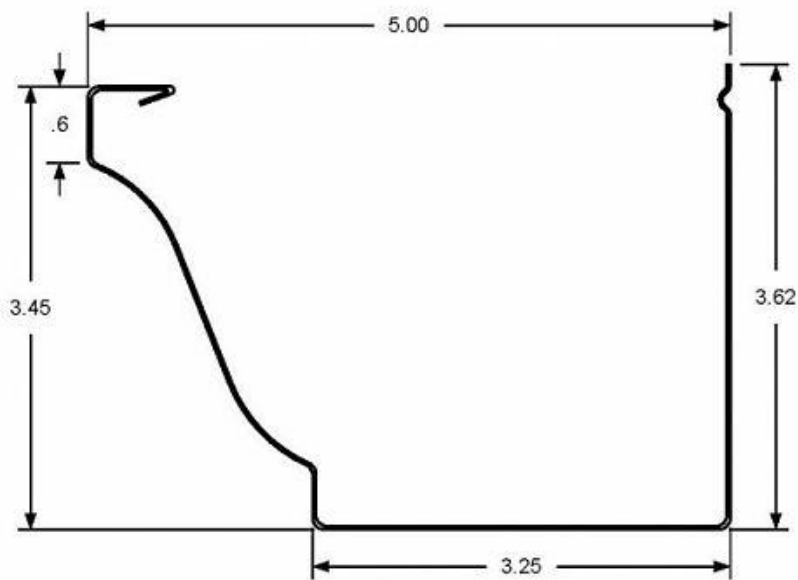
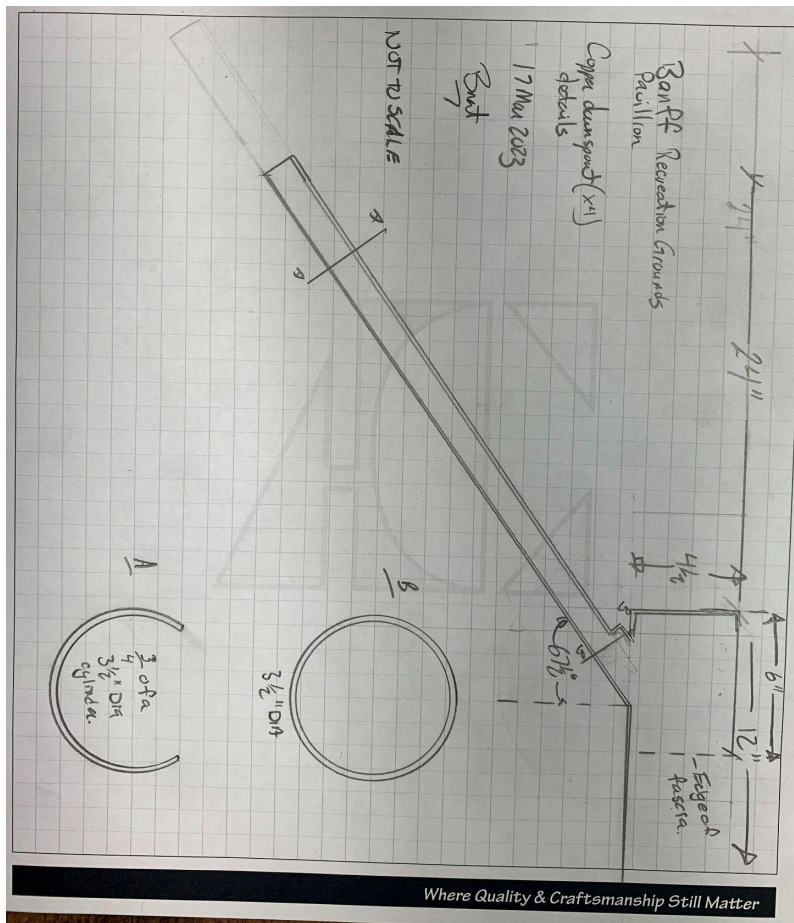
Website: <https://www.facebook.com/ativacustomdesign/> www.Dcroofingalberta.ca

Location: Around perimeter of fascia board and spouts at each corner

Image:



HSS DESIGN BUILD
SUSTAINABLE & PASSIVE HOMES



HSS DESIGN BUILD
 SUSTAINABLE & PASSIVE HOMES

5. WINDOW TRIM

Product: Cedar trim color: Sansin SDF “Caliwood”

Website: <https://barrydownepaint.com/products/caliwood-1134?variant=32128672038948>

Location: Around exterior windows

Image:



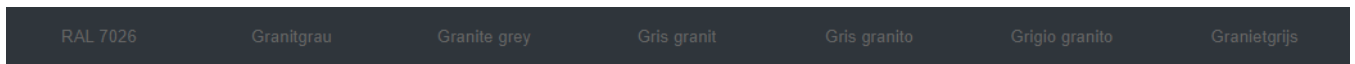
6. SNOW STOP COLOR

Product: RAL 7026 Granite Grey

Website:

Location: Roof

Image:



HSS DESIGN BUILD
SUSTAINABLE & PASSIVE HOMES