

Getting started with Medicaid Billing: (Bold – problem/questioning areas)

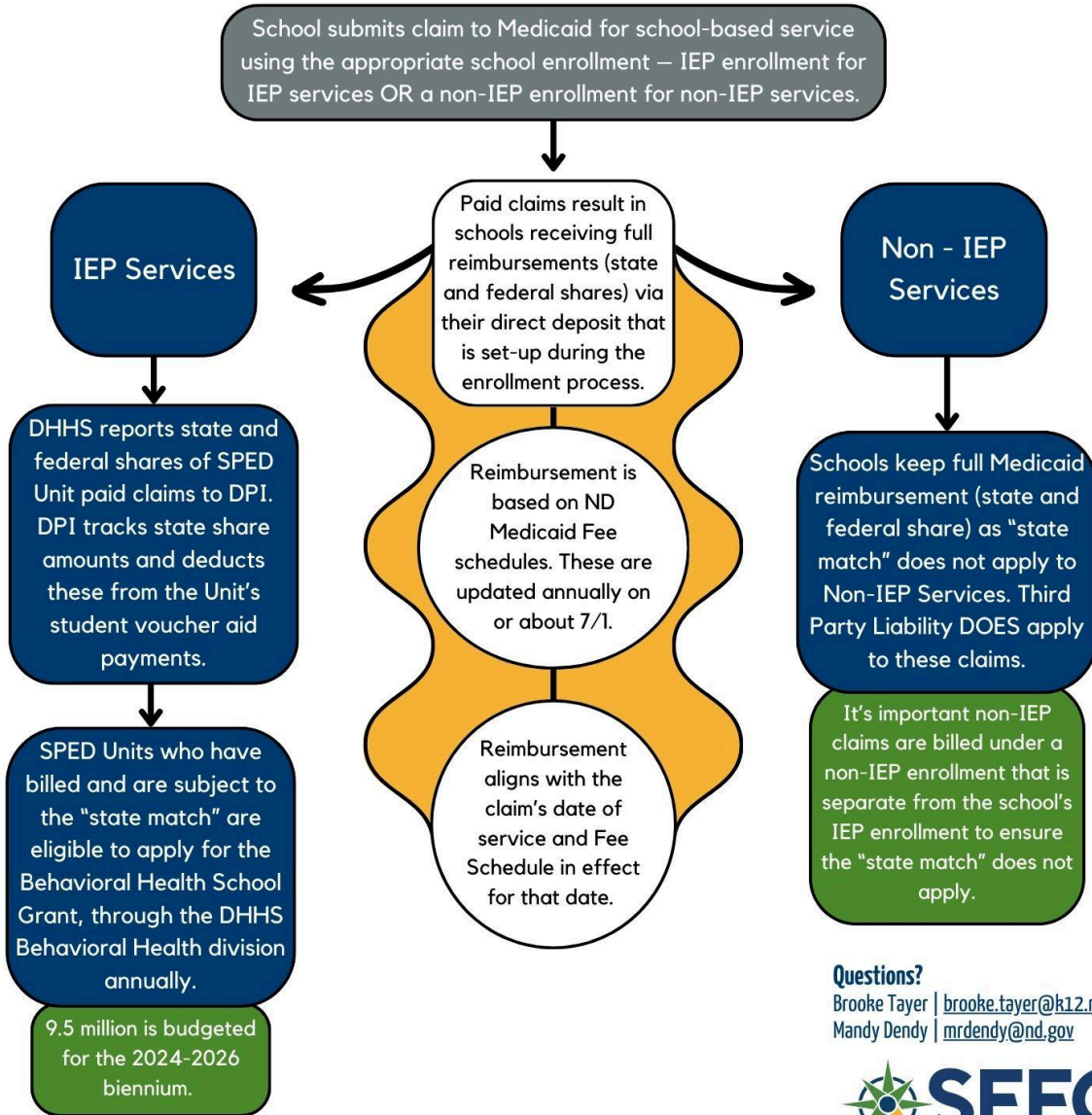
1. SPED Unit/School District – Group Medicaid Enrollment
 - a. NEED: [NPI Number](#) and Medicaid Enrollment
 - b. Resources: [Provider Enrollment Information | Health and Human Services North Dakota](#)
2. Individual Provider Enrollment – Service Providers
 - a. NEED: [NPI Number](#) and Medicaid Enrollment
 - b. Resources: [Provider Enrollment Information | Health and Human Services North Dakota](#)
3. Identification of Students:
 - a. Need of service: IEP, 504 plan, health plan, etc
 - b. Medicaid Eligibility
4. Collection of documentation:
 - a. Parent Consent
 - b. Provider Authorization
 - c. Additional documentation may be required for specific services/service providers
 - i. Nursing – need physician signature
 - ii. ABA – diagnosis, physician signature, letter of necessity from physician, etc
 - d. **NON-IEP Services – Not touched by any SPED unit yet**
 - i. Ensuring your plan of care is aligned with Medicaid policies
 - ii. Link to resource: [school-based-medicaid.pdf \(nd.gov\)](#)
5. Once all of documentation in place and filed appropriately:
 - a. Set to start billing for:
 - i. Medicaid Eligible students
 - ii. Services under the Medicaid Policy

Other supports:

1. How can I help enroll students: [Ways to Apply | Health and Human Services North Dakota](#)
 - a. **How can we help get school-based personnel trained in assisting with enrollments?**
2. What are the benefits for my SPED Unit/School District to bill Medicaid?
 - a. Reimbursements for services already being provided
 - i. Direct reimbursement
 - ii. Behavioral health school grant
 - b. Upcoming – Medicaid Administrative Claiming
 - i. This is supplemental funding for the behind the scenes work by ALL team members.
3. What does the funding stream look like for School-Based Medicaid? See Below page

SCHOOL-BASED MEDICAID BILLING

FLOW OF FUNDS



Questions?

Brooke Tayer | brooke.tayer@k12.nd.us
Mandy Dendy | mrdendy@nd.gov



More Information:

Medicaid is funded jointly by state and federal governments. Each pays a certain percentage, known as a federal share and a state share.

State school aid payments are reduced by the state's share of IEP service reimbursement, aka Medicaid match.
This match rate changes annually based on the Federal Matching Assistance Percentage (F-MAP).

State Share/Medicaid match is never greater than 50%