

# John's Jumper Cosy

a pattern from Sarah A M Anderson (LadyMac111)



knitted and felted cosy specially designed for the extra-large 2-L Brown Betty inspired by the lovely jumper worn by John Watson in the BBC's *Sherlock* based on charts provided by Trudi Brown & Ashley Harp for Dr. Watson's Cabled Crew-Neck worked from the bottom up, in the round *and* flat [a study](#) has been done to determine its effectiveness at keeping tea warm

## Materials

1 skein Cascade 220 wool (or other worsted or aran wool, non-superwash)  
Two US8/5mm circular knitting needles, 16 inches or longer  
Tapestry needle or your preferred tool for weaving in ends  
Felting apparatus



## Abbreviations

k - knit

p - purl

m1 - make one stitch - I used a lifted increase knitted through the back loop

k2tog - knit next two stitches together (right-leaning decrease)

SSK - slip next two stitches as if to knit, and then knit them together (left-leaning decrease)

C2L - slip 2 stitches to cable needle and hold to front. K2, then k2 from cable needle

C3L - slip 3 stitches to cable needle and hold to front. K3, then K3 from cable needle

## Gauge

is not critical because of the felting aspect of the construction.

## Errata

Revisions are marked in **red text**

## Instructions

### Beginning

Cast on **120** stitches, distributed equally over both circular needles (**60** stitches each). Join in the round, being careful not to twist.

Work k2, p2 ribbing for 3cm. End with one stitch remaining on needle 2.

### Setup for first side panel

Slip the last stitch on needle 2 to the beginning of needle 1. The first two stitches are the border and will always be worked in garter stitch (knit on every row). They are included in the following instructions but not in the charts that follow.

Setup row (RS): **K2, p1, k6**, p1, k4, p1, k6, p1, **k9**, m1, **k9**, p1, k6, p1, k4, p1, **k6, p1, k1**. You have reached the end of needle 1. Slip the first stitch from needle 2 to the end of needle 1 and knit it. These last two stitches are the garter stitch border and will be knit on every row. They are not included in the chart that follows.

There are **63** stitches on needle 1.

Turn.

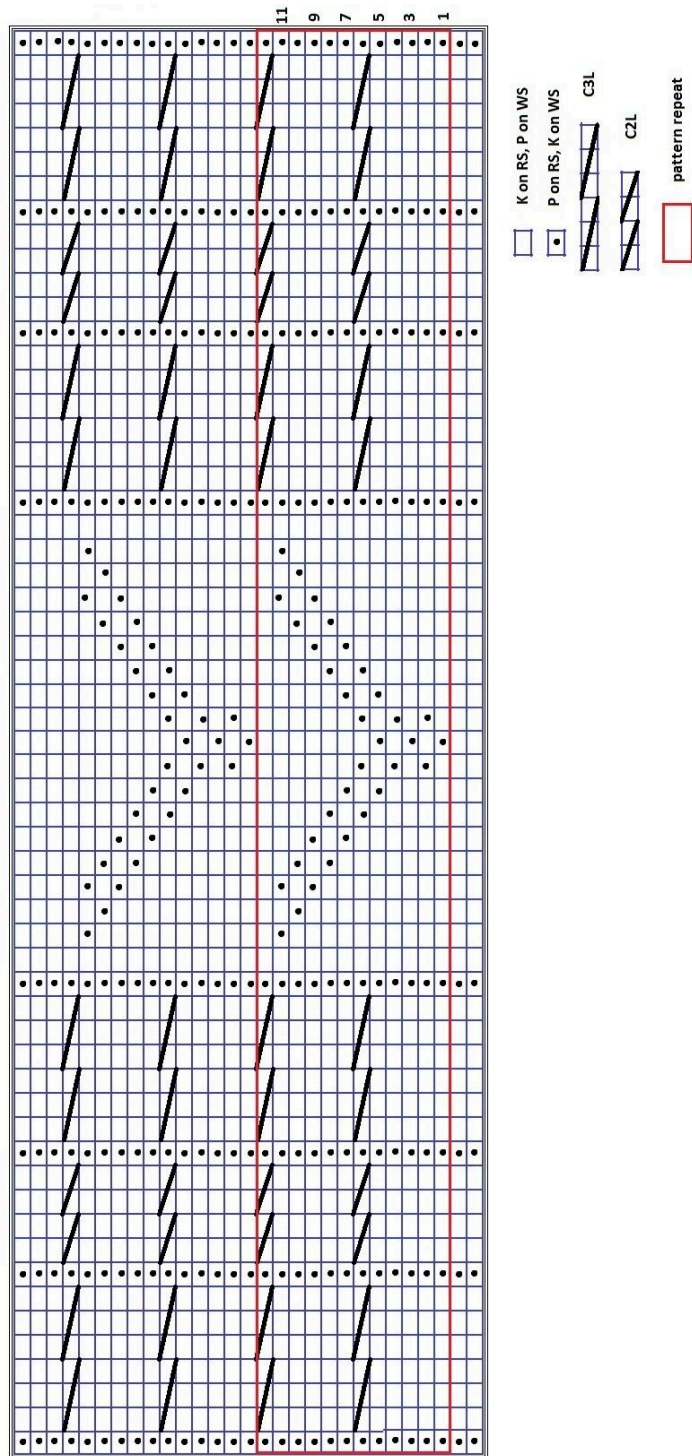
### Side panel

The side panel is worked back and forth on one circular needle. The first and last two stitches of every row are in garter stitch and not included in the chart.

Begin working the chart on row 1, which is a WRONG SIDE row. In this pattern, odds are WS and evens are RS because I said so.

Work the chart three times. You will have three chevrons and six cable-crossing rows and end with a wrong-side row. Break the yarn, leaving at least a 30-cm tail. Work the tail in when you join the two side panels.

## CHART



### Other side panel setup

Turn the work so that the right side of the work on needle 2 is facing you.

Setup row: With a new strand of yarn (or the outside of your center-pull ball, because you're clever like that), pick up and knit two stitches on the inside of the bottom of the garter stitch border at the beginning of needle 2 -- the two edges will overlap. These first two stitches will always be worked in garter stitch (knit every row).

K6, p1, k4, p1, k6, p1, **k9**, m1, **k9**, p1, k6, p1, k4, p1, k6.

Pick up and knit two stitches on the inside of the bottom of the garter stitch border at the end of needle 2 -- the two edges will overlap. These last two stitches will always be worked in garter stitch (knit every row).

Continue the second side panel exactly as for the first. When you reach the end, DO NOT break the yarn.

### Joining the two side panels

You are working on needle 2. Slip the last two stitches from needle 1 onto its other tip, and knit these together with the first two stitches on needle 2, like a 3-needle bind-off, but without binding off. (That is: knit the first garter stitch from needle 2 together with the first garter stitch on needle 1, and the second garter stitch from needle 2 together with the second garter stitch on needle 2.) You now have two garter stitches between the two side panels.

Work across needle 2, following the charts as before. When you reach the last two stitches, knit them together with the first two stitches on needle 1. Work across needle 1, following the charts as before and working in the yarn tail as you go.

### Decreasing the top

From here on, you will be working in the round, and your garter sections must be PURLED every other row.

You will be decreasing **every row**, across the cabled sections. Once a cable column has a decrease in it, cease working the cable crossings.

Round 1: p2, SSK, work across panel in chart pattern to last 2 sts, k2tog, p2, SSK, work across panel in chart to last 2 sts, k2tog.

Round 2: k2, SSK, work across panel in chart pattern to last 2 sts, k2tog, k2, SSK, work across panel in chart to last 2 sts, k2tog.

Repeat rounds 1 and 2 until 19 stitches remain for each panel (42 stitches total). You should have completed a fourth repeat of the charts. **If not, make something up and call it a design feature.**

### Collar

Setup: K2tog (these were your garter stitches), k1, p2, continue working in k2 p2 rib until you reach where the other garter stitches were. Knit or purl these together (in pattern) and continue working in k2 p2 rib until the end of the round.

Work in k2 p2 rib for 2cm. Bind off loosely. Weave in all ends.

### Felting

Your cosy right now is probably too big. And if you wash it, it will probably grow, which is unhelpful. John's Jumper Cosy needs to be *partially* felted in order to fit properly.

If you've felted before, go ahead and do it the way you're most comfortable.

If you've never felted before, check out Knitty's [article](#) on machine felting or [this one](#) on doing it by hand, and you may also enjoy this [column](#) for first-time felters.

For mine, I began by soaking the cosy in tap-hot water and agitating it with a few drops of dish soap, then draining the water, squeezing out the cosy, and soaking it in more fresh hot water with a bit more agitation. Then I put it in the dryer with a white sweatshirt (be careful if you're using something else for agitation, in case there's any dye bleed!) for about half an hour. I actually took the pot down to the laundry room with me, and checked on it about every ten minutes until it fit properly. If it gets dry, saturate it with hot water again. You want it to stay wet through the whole process.

### Blocking

The cosy may be blocked flat if you like, but I think it worked fine to just set it over the pot and pull it into the appropriate shape periodically, if it wasn't already. Some of my cables needed coaxing to keep looking like cables, so be sure you get everything looking right while it's still a bit damp.

## Science

I performed [a study](#) to determine the difference in cooling times between my pot with and without the cosy. If you like, you may use my methods (or modify them) and perform your own study. If you do, I'd love to see your results! You may contact me through Ravelry (ladymac111) or by email, [ladymac111@gmail.com](mailto:ladymac111@gmail.com).