

SEO Insights

SEO Page title	Where are the main business districts in Paris?
Main Keyword	Paris business district
Meta description	Paris is home to several well-known business districts, each with unique features. Learn more about each of these key districts.
CTA	https://www.parisattitude.com/
URL slug	https://blog.parisattitude.com/en/business-districts-paris-suburbs

Where are the main business districts in Paris?	1
La Défense, a European business center	1
La Défense attracts the largest companies	2
A skyline dotted with famous names	2
The Quartier Centrale des Affaires — QCA (Central Business District), the largest office park in Paris	2
The Madeleine Business District	2
Opera and Étoile: A Parisian corporate identity	2
The Paris Bourse Business District, an innovation and technology hub	3
Saint-Denis Pleyel, a rapidly expanding area	4
If you work in the Paris business districts, where should you live?	4

Where are the main business districts in Paris?

Paris is home to many business districts, each with distinctive characteristics. Whether ultramodern or more on the historic side, Paris' business districts form a bustling hub of activity that comes alive every morning.

Paris Attitude tells you everything about great places to live that are a stone's throw from your workplace. That's the height of luxury in Paris!

La Défense, a European business center

Located in the [Hauts-de-Seine](#), just 6 km from the center of Paris, the [La Défense](#) district covers over two square miles.

Its numbers will make your head spin:

- 3.7 million square meters (nearly 40 million square feet) of office space
- 3,600 companies
- 180,000 employees
- 250,000 square meters (nearly 2.7 million square feet) of commercial space frequented by about 350,000 people every day

Regarding appeal and desirability, La Défense ranks first amongst European business districts and fourth worldwide.

La Défense attracts the largest companies

14 CAC 40 and 15 Fortune Global 500 companies have taken up residence here. The most prominent multinationals in the industrial, banking, financial, IT, insurance, and consulting sectors have chosen La Défense as their decision-making center, including Areva, Total, Engie, Société Générale, and Saint-Gobain, among others.

A skyline dotted with famous names

La Défense's skyscrapers are associated with architectural wonders. Among the most remarkable is **the Areva Tower**, with its 44 floors and impressive glistening black reflections.

Then there's **Société Générale's twin towers** rising to 158 meters (just under 500 feet). **The Engie Tower**, an environmental masterpiece, looks like a massive sheet of glass.

The Quartier Centrale des Affaires — QCA (Central Business District), the largest office park in Paris

The QCA comprises the [1st](#), 2nd, [8th](#), [9th](#), [16th](#), and [17th arrondissements](#). It is the **largest and densest financial and economic hub in Paris**.

The QCA is bounded by Porte-Maillot, Avenue de Villiers, the Louvre Pyramid, the Pont de l'Alma, and Place Victor Hugo. It is characterized by its Haussmann-style buildings and supports more than 640,000 jobs.

Within the QCA, players from the following industries rub shoulders:

- **Luxury**
- **Cosmetics**

- **Banking and finance**
- **Emerging technologies**

The Madeleine Business District

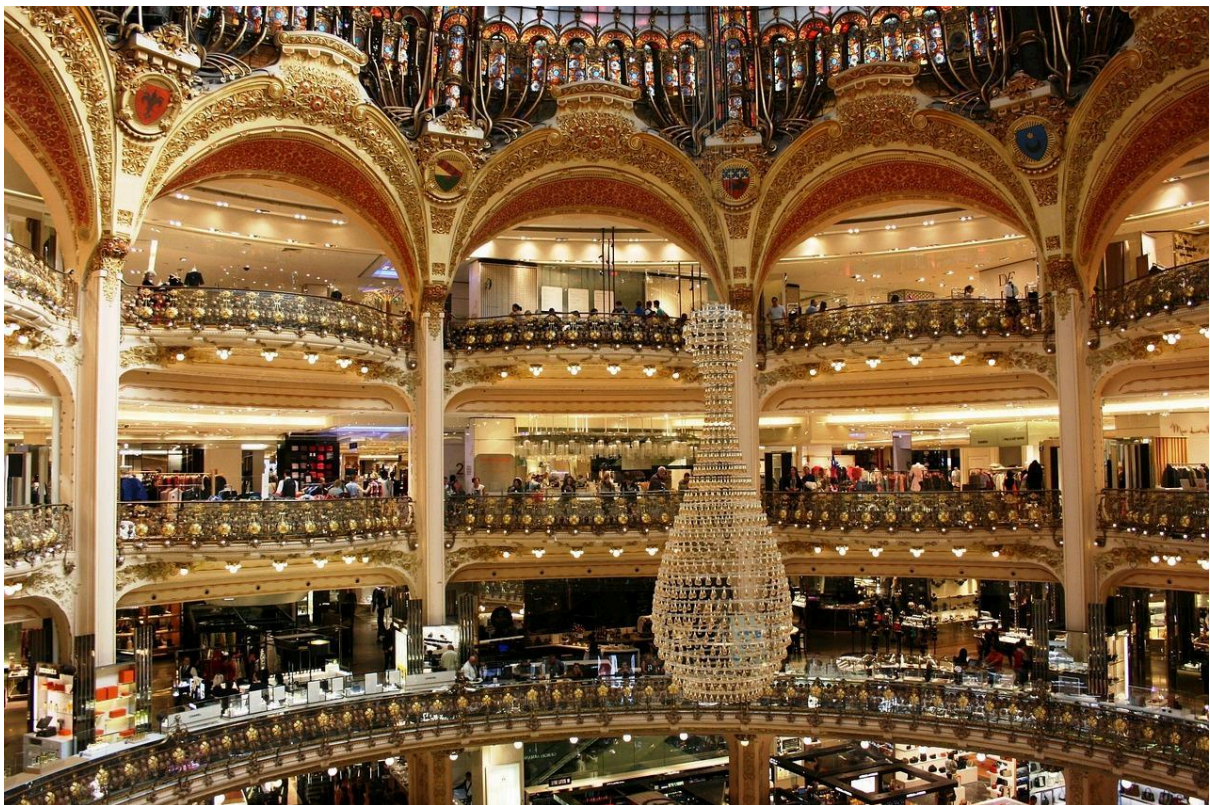
Paris' 8th arrondissement boasts more than 70,000 companies in various sectors (commerce, services, real estate, banking, etc.) and more than 3 million square meters (almost 10 million square feet) of office space.

In the heart of this district, a stone's throw from the Place de la Concorde and the Tuileries Park, the Madeleine Business District offers employees a prestigious work environment.

Opera and Étoile: A Parisian corporate identity

The Opéra district is located in the 9th arrondissement, between the Louvre and the Palais Garnier. It's home to the **corporate headquarters of companies across various sectors**, such as freight and logistics, energy, media, agri-food, telecommunications, financial and insurance, and air transportation.

It features modern designer spaces in magnificent Haussmann-style buildings. Here, you will find **Galleries Lafayette**, both as a store and as the group's corporate headquarters, as well as **the historic Edouard VII building**, the most prestigious commercial complex in the center of Paris.



The Golden Triangle (Triangle d'Or), centrally located and bounded by the Champs-Élysées roundabout, Avenue Georges V, Avenue Montaigne, and adorned with prestigious surroundings, offers a wide range of high-end services. Companies from the world of luxury establish their offices in this location.

Companies seeking an address with stature choose the **Golden Triangle for their headquarters or rent offices or high-end meeting rooms** here. It is an excellent location for flaunting the distinctive elegance and style associated with French culture; every aspect of the Golden Triangle has that “French touch”.

There are also service SMEs and many communications consulting firms.

The Paris Bourse Business District, an innovation and technology hub

Located in the [2nd arrondissement](#), this district is Paris’ former financial district. The physical Paris Stock Exchange was located here at the Palais Brongniart before it became entirely electronic. A stone’s throw from Place Vendome, the Bourse remains a Parisian hot spot.

The area has retained its **office buildings**. At the same time, the Palais Brongniart has become a **venue for various events, conventions, seminars, conferences, and galas**.

The “**Silicon Sentier**,” located in this arrondissement, has attracted social media giants such as Facebook and Twitter. The Sentier is also home to leading emerging technology companies, like the French carpooling start-up Blablacar.

Saint-Denis Pleyel, a rapidly expanding area

This district, near the Grand Paris Express’ largest metro station, was commissioned at the beginning of the 2024 Olympics and is enjoying a revival.

Of the 310,000 square meters (nearly 1.1 million square feet) covered by this redevelopment project, half is dedicated to office space and commercial activity. The French Ministry of the Interior will set up its offices there in 2026, joining the **38,000 companies in the Plaine Commune**. (A French commune is analogous to an incorporated municipality)

If you work in the Paris business districts, where should you live?

Located behind the Arc de Triomphe, between Courbevoie and Puteaux, La Défense is **exceptionally well served by public transportation**. The metro, RER, trams, and Transilien connect the area to all strategic points in Paris.

La Défense has 50,000 residents and many facilities making it a “**smart city**” and a **great place to work and live**. Ongoing construction, such as the Tour des Jardins de l’Arche and Le Crescent, offer more status and prestige than many other Parisian properties.



As for shops and amenities, Les Quatre Temps has everything you need. Do you prefer to live right in the city? Check out our guide to find out where to live if you work in La Défense.

Employees who work in the QCA or the Bourse prefer the centre-ouest parisien, which includes the **1st, 2nd, 8th, 9th, 16th and 17th arrondissements**. They offer first-rate surroundings with green space, shops, and local services. In addition, they are well served by public transportation, so that you can **get to your office in less than 20 minutes**. Furthermore, there's an extensive choice of restaurants and options for going out.

Finally, the **Pleyel area is getting a makeover with many ongoing projects including expanding public transportation**. The city is making an ambitious commitment that combines the following:

- Housing ranging from studios to three and four-bedroom apartments to accommodate different size families
- Green space, including a landscaped promenade on the banks of the Seine
- Services and shops near where you live
- Venues dedicated to culture and leisure

Looking for a [place to live](#)? Check out our Paris offerings:

- [Corporate and professional apartments](#)
- [Three-bedroom apartments](#)
- [Lofts](#)