

Choejong Balmun (최종 발문)

<https://www.youtube.com/watch?v=vDP4nh6rm84> (YouTube)

<https://soundcloud.com/mistsomething/happy-birthday-kirby-ending-theme-medley-2a03vrc6fds?in=user-162777139/sets/music-to-listen> (Soundcloud)

<https://kirby25.bandcamp.com/track/ending-theme-medley> (Bandcamp)

(MistSomething - Happy Birthday, Kirby! Ending Theme Medley)

Translation of level name: Final Epilogue (Meaning: Kirby is ending, but having a new beginning)

All the gameplay by Taco (TBA)

0:00-0:44 - First part

0:44-1:43 - Second part

1:43-1:51 - Endscreen

0:00-0:03 - Taco

0:03-0:16 - Doger606

0:16-0:28 -

0:28-0:38 -

0:38-0:57 - Taco

0:57-1:10 -

1:10-1:22 -

1:22-1:43 - Doger606

I might do the endscreen, but I'll ask people if they can do one, especially Splash (leader of Team Proxima).

Done lol

Only three creators can join (besides me UwU) tbh

The level will be around the difficulty of Necropolis to Ziroikabi (Insane-Extreme Demon)

Creators: LupineTaco (Host, Transitioner, and Publisher), Doger606, two more spots left, endscreen creator

Verifier - LupineTaco(Unconfirmed)

Playtester(s) - TBA

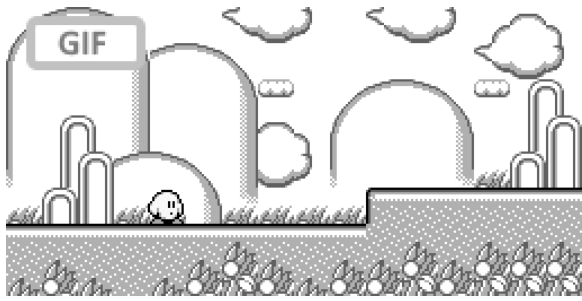
Part of Choejong Balmun	Gameplay	Decoration	Group ID	Color ID	Duration
Default groups	N/A	N/A	1 - invisibility 2 - 50% 3 - 25%	1 - white 2 - black 3 -	1:43-1:51(en dscreen) 0:00-1:51

			751-950 - Vacant groups (contact if for use) 951-1000 - endscreen	Background color	(level, 1:51 long)
Taco (Dreamland)	Taco	Taco - Old Retro style	4-50	N/A	0:00-0:03
& Taco (Dreamland)	Taco	Doger606, Glow/Modern style	51-150	N/A	0:03-0:16
& Taco (Dreamland)	Taco		151-250	N/A	0:16-0:28
& Taco (Dreamland)	Taco		251-350	N/A	0:28-0:38
Taco (Dreamland and Milky Way Wishes)	Taco	Taco - Zimnior12 Style Glitching Style Old Retro Style > Samifying Style	351-400	N/A	0:38-0:57 0:38-0:45 (Dreamland) 0:45-0:57 (Milky Way Wishes)
& Taco (Milky Way Wishes)	Taco		401-500	N/A	0:57-1:10
& Taco (Milky Way Wishes)	Taco		501-600	N/A	1:10-1:22
& Taco (Milky Way Wishes)	Taco	Doger606, Glow/Modern style	601-750	N/A	1:22-1:43

My gameplay for the entire level is for consistency.
You need to be at least decent enough to join.

Images for references and help:

LupineTaco-



(Beginning part)



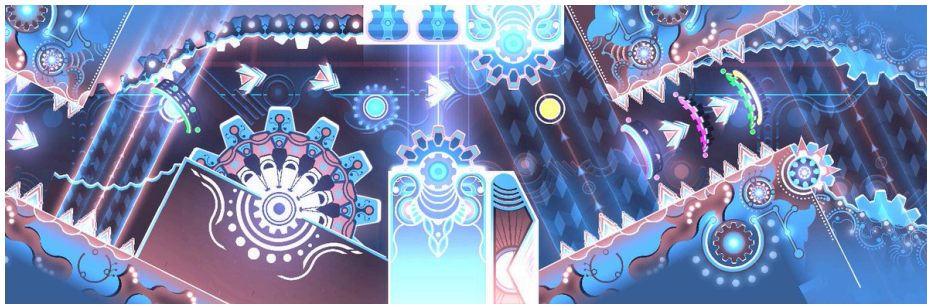
(Imma make a mask)



(this pose but with Taco... what? I like that thinking pose)



(Zimnior part)



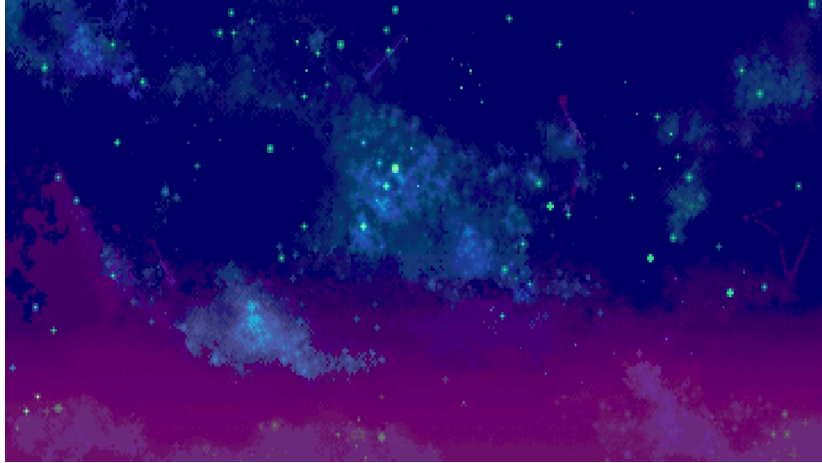
(Sami part, but with

black and white color scheme)



EMPTY SPACE FILLER!!!

(Endscreen)



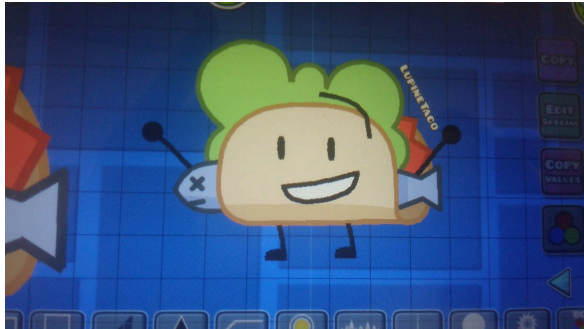
(Endscreen)

```

A B C D E F G H I J K L M N
O P Q R S T U V W X Y Z
A B C D E F G H I J K L M N O
P Q R S T U V W X Y Z
0 1 2 3 4 5 6 7 8 9
$ % & ' * ( ) , . : ; < ?
! ! \ | [ ] < > [ ] [ ] [ ] ^ ~
" " " " " " " " " " " " " "
A A A A A A A A A A A A A A
I I N O O O O O O O O O U U U
U B
A A A A A A A A A A A A A A
I I N O O O O O O O O O U U U

```

(Literal thing for Zimnior part)



(My icon, the second part will have Samifying think)

